

Delamere and Oakmere News



Number 30

Spring 2014



Keep left, right, or middle - the Abbey Arms crossroads c. 1907

In this issue:

- Views from the past
- Map of future parish boundaries
- Reviving Delamere's mosslands

Forthcoming events

Church services

St Peter's Church, Delamere

Thursday 17 th April	7:00pm Maundy Thursday, Service of Holy Communion
Friday 18 th April	10:30am Good Friday, Service of Morning Worship
Sunday 20 th April	8:00am Easter Day Holy Communion
Sunday 20 th April	10:30am Easter Day Service

Regular services

Every Sunday at 8am	Holy Communion
On the first and third Sunday at 10.30am	Holy Communion
On the second Sunday at 10.30am	Family Service
On the fourth and fifth Sunday at 10.30am	Morning Worship

Oakmere Methodist Church

The people of Oakmere Methodist Church meet together in the main church at 10.45am every Sunday morning for a service led by a Methodist Local Preacher or Minister. One service a month includes the sacrament of Holy Communion, led by a Minister (Presbyter).

Contacts: Anne or Eric Wright (01829 732950) or Rev Denise Harding (01928 733180).

Delamere and District Golden Club

April 2	AGM - to be arranged	Sep 3	Delamere Derby
April 16	Speaker - Susan Ross-Turner	Sep 17	Birthday Lunch and Steve Lucas
April 30	Chair Aerobics - Shena Storah	Oct 1	Bingo (Yellow)
May 14	Coach Trip	Oct 15	Harvest Festival
May 28	Bingo (Orange)	Oct 29	Halloween Lunch and buck Apple!
June 11	To Be Arranged	Nov 12	Christmas Shopping Trip
June 25	Social Day & Small Buffet	Nov 25	Delamere School Children
July 9	Keep Fit - Cara Mason	Dec 10	Christmas Party with Entertainment
July 23	Card Bingo		

All ages welcome!

Chairman: Bob Parr 01606 888117, Deputy: Kath Wood 01606 301141, Secretary and Treasurer: June Budd 01606 888117. For all queries regarding events and membership please call the Secretary.

W.I.

Date	Speaker	Title	Competition
April 8 th		to be arranged	Poem in style of famous poet
May 13 th	Members	Resolutions and Tasting evening	
June 10 th	EWM	Fashion Show	
July 8 th	Keith Burkett	Roberts Bakery	Edible cake decoration
September 9 th	Marshalls	Antiques	
October 14 th	Kate Cawley	Learning from my mistakes	Group comp. to be announced
November 11 th	AGM		
December 9 th	Christmas Party		Home made Christmas decoration

President: Mrs B de Gaunza 01829 751788, Secretary: Mrs S Goodwin 888921, Treasurer: Mrs C Green 882264. Meetings are held at 7.30pm, every second Tuesday in the month except for August, at Delamere Community Centre

Nick Tomlin Cars

Your friendly local Service Centre and Car Dealer



Service and MOT

Servicing with us does not affect your manufacturer's warranty! So why pay main dealer prices?
All makes of vehicles. Free courtesy car supplied, or free collection and delivery in the Oakmere area.

Body Shop Centre

No job too big or small, from a bumper scuff to a full body re-spray.
All insurance work welcome with courtesy car supplied.

We are proud to be a family-run business established since 1994

Easy to find - we are on Chester Road, Oakmere

Tel: 01606 889494

<http://www.nicktomlincars.co.uk/>



like us on Facebook
to see our latest offers

Need extra help? ... but not the extra staffing costs?



Whether it's an ad hoc piece of work or ongoing support, I'm here when you need me
(but I'm not when you don't!)

Virtual Business Services Supporting You and Your Team

Secretarial & Administration
Shorthand Meeting Minutes
Email/Diary Management
Event Co-ordination

Social Media
Newsletters
Website Maintenance
Direct Temping

... and more



www.MoreThanAdmin.co.uk

Contact Clare on 01606 301583 or clare@morethanadmin.co.uk

A Member of the Institute of Administrative Management



NRC Plumbers

your local Delamere plumber

Quality work at Affordable prices!

- No job too small
- Complete bathrooms including tiling
- Prompt, Friendly, Professional

- **Oil and Gas work now covered**
- **We are local**
- **We actually respond to your call**
- **We do not leave a mess**
- **We do want your recommendation**
- **We cover everything from leaking taps to complete bathrooms**

NRC Plumbers

4 Ottersbank Mews, Fishpool Road, Delamere
CW8 2HP

01606246266 or 07740 786325

neilcopeland1@sky.com

Foreword

The cover picture and several others in this issue come from Tom Esser and the relatives of his neighbours, Barbara and Sid Neile, who lived at 47 Station Road. Sid died a few years ago, and when Barbara died her relatives (who live in Wiltshire) found an album of old postcards when they were clearing out the property. They thought they should stay locally, which is a nice gesture to us all, and gave them to Tom. If you would like to see them contact Tom (or the editor, who has some scanned copies).

By pure coincidence the cover picture is relevant to one of the news items in this issue - the ever-growing traffic at the Abbey Arms junction! Times have changed, and continue to change. The reports from our Parish Councils cover the main developments, with details in some of the features. In particular we have got a map of the new parish boundaries, another of the new Oakmere Way, and a schematic of the proposed Marley development.

We have also got an article from Katie Piercy of Cheshire Wildlife Trust about the mossland habitats of the forest and how they are being restored; a history of Eddisbury Fruit Farm (which will soon be closing); a short guide to local eating places; an update on infrastructure developments and related issues; and for those who like a challenge, another crossword.

At the end you will find a list of CW&C telephone numbers that you may want to keep, and an invitation to join the Community Association's '100 Club'. The prizes don't quite match the national lottery, but the chances of winning one more than make up for that! And every penny that doesn't go into them serves to help the community.

About the newsletter

Delamere and Oakmere News is published on a semi-regular basis three or four times a year. The next issue is planned for the summer.

Articles, ideas for articles, news of recent events or forthcoming ones, advertisements, photographs, and any other contributions relevant to Delamere and/or Oakmere are all very welcome (inclusion subject to editorial discretion).

The newsletter is available in **full colour** on the Delamere and Oakmere Community website. You can also get a PDF file of the colour version by email (contact us if you would like a copy).

do_newseditor@yahoo.co.uk
or ring Clive George on 01606 882183

Contributions always welcome!



Seriously, a glass or two really IS good for you -
Keeping Fit for Christmas at Abbeywood (photo courtesy Carol Chadwick)

Delamere Community Centre



Drop In Coffee Morning & Book Swap

Last Friday of each month

Next Coffee Morning
Friday 25th Apr
10:00 am – 12:00 pm
All Welcome



To donate books contact Paula on
01606 889741

Delamere Community Centre

Registered Charity no 504881

5 Station Road, Delamere CW8 2HU

“Quiz Night”

On

Friday 4th April

Doors open 7.15 - Quiz starts at 7.45



Quiz Master Steve Lacey

Tickets are £6 per person

Includes quiz, buffet, tea, coffee
& squash. You can bring your own alcoholic
drinks/glasses if you prefer.

Quiz teams of between 4 – 6 people.
If there are not 4 of you please do come along as
you can still be part of a team.

Prizes for the winning team
Raffle & ‘Roll the Coin’ Whisky game

Further information can be obtained from:

Mrs Paula Cockroft 01606 889741 email:
paulacockcroft@yahoo.com

Mrs Yvonne Billows 01606 888303 email:
yvonnebillows@btinternet.com

DELAMERE COMMUNITY CENTRE

Needs



Would you like to join the DCA Management Committee?

Organise a New Activity or Fund Raiser?

Provide general help at the Centre?

If you can offer any help
please contact ...

Evelyn 01606 301762

Pat 01606 883631

Paula 01606 889741



Letter from the Rector

March 2014

Dear Friends

It hardly seems credible that it is Spring already, this year seems to be flying by faster than usual. Lent began on 5th March with Ash Wednesday and continues through to Easter Day on April 20th with a break from the Lenten discipline on March 30th for Mothering or Refreshment Sunday.

As you would expect plans and arrangements for these services have been in place for some time but the PCC at St Peter's has also been thinking about other significant dates this year particularly the anniversary of the beginning of World War 1.

I was reading recently about an army Chaplain, Revd David Railton MC who first suggested that there should be a memorial in Westminster Abbey to all those countless unknown men who had done brave deeds in the war where no one saw them and in consequence had no recognition, no medals and no decorations. And so it was that an unknown-soldier's body was wrapped in a Union Flag and buried in the Abbey in a place of great honour, the place we know as the tomb of the 'Unknown Soldier'.

There are strong feelings throughout the country, that those who paid the ultimate price, even those who are 'unknown' should never be forgotten. There will therefore be a special service at 10.30am on Sunday 3rd August which we are calling 'Not Forgotten' when we will recall the tremendous sacrifice of World War 1 and the following day (4th August) St Peter's will be open all day for quiet reflection and remembrance. Two and a half thousand years ago the psalmist affirmed that 'The righteous shall be had in everlasting remembrance' (Psalm 112:6). God does not forget us, he never will, and we should not forget each other.

We warmly invite you to worship with us at St Peter's, each Sunday there are services at 8am and 10.30am. On the 2nd Sunday of each month at 10.30am, we have a service for all the family.

Do contact me by telephone or email if you would like me to visit or pray for you.

Brian joins me in sending good wishes and blessings

Elaine Ollman
The Rectory
Chester Road
Delamere, CW8 2HS

Community Centre News

The **drop-in coffee mornings** in the Community Centre have been a great success, and will continue as a regular event for the foreseeable future. They take place on the last Friday of each month, from 10 to 12 o'clock. If you have any **books** to swap there, contact Paula on 01606 889741.

The last **Quiz Night** was packed out and much enjoyed by all, and there will be another on Friday 4th April. For tickets contact Paula (01606 889741) or Yvonne (01606 888303).

paulacockcroft@yahoo.com
yvonnebillows@btinternet.com

Community Centre activities and contacts

Booking Secretary	01606 882114
Badminton (Tues 10 - 12am)	01606 883027
Badminton (Thurs evening)	01606 882708
Billiards/Snooker	01606 889741
Bingo (Sat 7.30)	01606 853861
Prize Bingo (4 th Tues of month)	01606 853861
Bowls (outdoor)	01606 889174
Bowls (indoor)	01829 760420
Bridge (Mon)	01606 882003
Bridge (Wed 7 - 10pm)	01606 888391
Dancing	01606 889411
Golden Club	01606 888117
Guides	01928 789010
Over 60 Keep Fit (Wed)	01606 888043
Slimming World	07817 725939
Whist (Thurs pm)	01606 888889
Whist (Fri pm)	01606 888889
WI (2 nd Tues of month)	01606 882183

Volunteers needed!

We all appreciate the effort put in by the volunteers who run the Community Centre and its activities. The more there are, the easier it becomes. If you would like to help in any way contact Evelyn (01606 301762), Pat (01606 883631) or Paula (01606 889741).



J&S Oakmere

Motorcycle Megastore

THE BIGGEST MOTORCYCLE AND ACCESSORIES STORE IN THE UK!

J&S Accessories Ltd was started in Northwich nearly 30 years ago, and now has twenty five stores nationwide. The Northwich store moved to Oakmere in 2012.

- **Massive selection of motorcycle clothing and accessories**
- **Main Kawasaki dealer**
- **Massive selection of brands**
- **Service and parts department**
- **Café serving hot and cold food and drinks (under new management)**

J&S Accessories Oakmere is a Kawasaki dealer with a motorbike showroom, and extensive clothing, helmet, boot and ladies departments amongst others. The store has a large customer carpark to the rear of the building.

On the A556 Chester Road

**Oakmere,
Northwich,
Cheshire,
CW8 2HB**

Telephone: 01606 810800

Website: www.jsaccessories.co.uk

Opening Hours

Mon-Fri:	9.00 - 18.00
Sat:	9.00 - 17.30
Sun:	10.00 - 17.00

Parish Council news

Delamere Parish Council Chairman's Letter

Well – judging on the last few days (8th and 9th March) we may be seeing the first signs of Spring. Spring, as we all know is a season of renewal – but as far as the parish council's focus is concerned it is less about renewed, but continuous focus on the same set of key issues that occupied us during much of last year.

The Local Governance Review of proposed Town/Parish Council boundary changes has made progress. Following much good work by the Cheshire West and Chester staff managing the review, a set of proposals have emerged which have the support of the Parish Council and the CW&C sub-committee charged with overseeing the process. These proposals (in summary – amalgamation of the current Oakmere and Delamere Parish Councils into one warded council; the creation of a new extended parish of Willington incorporating some previous Delamere properties; the move of some of the properties on Waste Lane and The Yeld to Kelsall parish) have been subject to one final round of public consultation ending February 28th. As no adverse comments have been received it is expected that these proposals will be ratified by the full CW&C council in April and thereafter the various councils will need to develop plans for transitioning to the new structure in 2015.

Another of the key issues we continue to focus on is the planning application for the Forestry Commission redevelopment of the Linmere visitors centre and Delamere Forest cabin development. With Oakmere Council we have been active in ensuring that the views of residents on these proposals have been communicated to both the Forestry Commission and CW&C. Initially the plans, about which we expressed concerns, were approved by CW&C. However given the importance of this issue we were happy to hear that it will now be subject to a public inquiry. Delamere Council have already re-iterated our concerns as input to the public inquiry and will continue to take every opportunity to represent our residents' views.

We are also taking a keen interest in the proposed development of the Marley site. Crown Agents organized a further round of consultation with local residents in November 2013. Both Oakmere and Delamere councils

submitted very similar feedback on the proposals. Delamere made clear that residents did not support large developments of this nature but also set out improvements and contribution to local infrastructure that would be needed if the proposal was to proceed further. The formal planning application has now been submitted. Planning, in general, remains a continuous concern for the Parish Council as we continue to contend with developments which are encouraged by the changes to planning legislation. While we should not oppose development *per se*, we continue to take a strong stance where we see applications, which we believe, would do significant detriment to the character of our community.

Finally with all this going on in the parish – the Parish Council have managed to hold its precept for 2014/15 at the same level as last year.

As always you can keep up with these developments through attending our Parish Council meetings, or reviewing the minutes available on the Delamere and Oakmere website or parish notice boards.

Harry Tonge
Chair, Delamere Parish Council.

Oakmere Parish Council Chairman's Letter

Mid Cheshire Bridleways Association (MCBA) have invited Oakmere Parish Council (OPC) and Delamere Parish Council (DPC) to the official opening of the Oakmere Way on the 4th April 2014. As I hope you know, the new multi-user route will allow walkers, horse riders and cyclists to travel between Stoneyford Lane and Station Road. The combination of the Oakmere Way and the permissive path provided by the Forestry Commission will allow users to travel between Whitegate Way and Delamere Forest without having to negotiate roads except for crossing purposes. Thanks to the hard work of the MCBA this multi-user route is now a reality. More information about the Oakmere Way can be found on the Delamere & Oakmere Website (<http://delamereoakmere.co.uk/>) and in the D&O Newsletter.

In my November 2013 letter I reported on the Community Governance Review and a draft recommendation that Oakmere and Delamere should be “grouped” and a report for Norley that makes draft recommendations to move Oakmere's Northern boundary taking a number of properties on Gallowsclough Lane,

Stoneyford Lane and Cheese Hill Lane, into Norley parish.

The draft recommendation has now changed to “amalgamation” with two wards, rather than “grouped”. The practical difference is that Oakmere and Delamere will have a single Parish Meeting rather than two separate Parish Meetings. Also, Oakmere’s northern boundary has not changed, so the properties mentioned above stay in Oakmere. A statutory notice has now been posted as the next step in the process.

Crown Estates have held a second pre-planning application consultation, on proposals for a largely residential development on the Marley Tile Site. To remind you, OPC asked that in addition to the normal planning considerations, traffic management issues and reference to the Oakmere Community Led Planning Framework, we have asked Crown Estates to consider: Mains Gas extended from the Four Oaks site to the Marley site; Retirement Homes/Complex and medical facility; support for the Community Centre. Crown Estates have refined their plans somewhat and have begun to address some of the issues and suggestions raised, but with no clear outcomes at this stage. The planning application has now been submitted.

I also reported that the planning application for the Forestry Commission redevelopment of the Linmere visitors centre and Delamere Forest cabin development had been approved by CW&C. This decision has now been overturned by the Secretary of State for Communities and Local Government, referring the planning application to a public enquiry (which is due to take place in June).

Re-visiting Superfast Broadband, Connecting Cheshire are currently working with Openreach, BT’s local network division and the estimated dates for rollout in Oakmere and Delamere beginning Spring 2014 (Kelsall Exchange) and Summer 2014 (Sandiway Exchange). Further announcements can be found on their website, www.connectingcheshire.org.uk.

Oakmere Parish Council have held its precept for 2014/15 at the same level as last year.

Bill McGibbon
Chair, Oakmere Parish Council

We are on Twitter and Facebook!

Last July we announced that Nicola Gibson had started a *Delamere and Oakmere Facebook group*, to complement the newsletter and the website. Thanks to Clare Stuart West we are now fully up to speed in the digital age, with a *Delamere and Oakmere Twitter page* as well. Nicola and Clare are co-operating on both initiatives, and Clare will act as ‘moderator’ for both. The aim of both media is to distribute and share information from and about the local area (for residents, businesses and visitors), more quickly than is possible through the newsletter, and more succinctly than can be done through the website.

Readers who already use social media will be familiar with how they work. For those who don’t, members of the *Facebook* group will be able share information and ideas about upcoming events, items for sale, local business initiatives, and anything else of local interest. Those who sign up to the *Twitter* page will be able to send and receive short, sharp news items, to keep each other bang up to date.

Delamere and Oakmere Parish Councils will both be making use of the new media by submitting their latest news for publication, as they do now for the website and the newsletter, but getting through to users more quickly. Meanwhile, key discussion topics on Facebook and Twitter will be summarised periodically for publication on the website and/or the newsletter. To sign up for either or both go to:

<https://www.facebook.com/groups/389577814488267/> <http://www.Twitter.com/DelamereOakmere>

Art exhibition

Members of the Weaver Vale Art Society will be holding an exhibition of their work in Acton Bridge Parish Rooms from 11 to 13 April. Over 100 paintings by local artists will be on display, most of which will be available for purchase. Entry and catalogue - £1.00. For more information contact: 01606 74707, wvas@outlook.com, <https://www.facebook.com/pages/Weaver-Vale-Art-Society/175877522601404>.

the
FABULOUS YOU
— SKIN CLINIC —
at WILLINGTON HALL

Tarporley **01829 759332**
Chester **07512 512136**

Advanced Skin Treatments & Non-Surgical Solutions

Lift your skin to a new level of health
by targetting your skin concerns.

We guarantee you a brighter, clearer
or more youthful appearance.

- Lactic, glycolic and Vit C peels and re-surfacing solutions
- Cosmeceutical skin care and free analysis
- Radio frequency skin tightening
- Dermalroller – for scars, stretch marks and textured skin
- Injectables – BTX and dermal fillers
- Treatment for acne
- Treatment for pigmentation/thread veins
- Treatment for fungal nail conditions
- Permanent hair reduction



The Fabulous You Company
Willington Hall Hotel, Tarporley CW6 0NB

Verve Health & Fitness
33 Filkins Lane, Boughton, Chester CH3 5EJ

Email: info@thefabulousyoucompany.co.uk
Facebook: The Fabulous You Company
Twitter: @fabyouco

www.thefabulousyoucompany.co.uk

Coming soon:

AQ Skin Solutions

Human Growth Factor technology and therapy designed to treat hair loss, promote longer, thicker eyelashes and treat fine lines/ wrinkles and problem skin.

Offer 25% off your first skin treatment with this voucher

Quote FYC7.

Terms and conditions apply.



Oakmere Cricket Club



Oakmere Cricket Club are celebrating their 60th Anniversary this year!

The Club was founded in 1954 by enthusiasts previously playing for the neighbouring villages of Sandiway and Delamere.



Thanks to various grants, funding and hard work of many Club Members over the years, the original black and white timber pavilion has been transformed into an excellent building providing outstanding facilities for both players and spectators alike. Our outfield is also in great condition, last year we were top of the pitch markings and 2nd in outfield marks.



We have Senior Mens, Juniors and Ladies teams playing over the weekend and mid-week matches.

Qualified Coaches provide structured training sessions across all teams. This season's outdoor training will commence as per below with Matches starting in mid-April:

- **Senior Nets: Tuesday 1st April 6.30pm**
- **Junior Nets: Wednesday 9th April**
(Under 11's from 6pm – 7pm / Under 13's & 15's from 7pm – 8pm)
- **Ladies Nets: Monday 31st March 6.30pm**

Oakmere are a very well organised, friendly and supportive club, recognised by the award of Clubmark status by the ECB. We are proud to say that last season the 1st XI were joint winners of the "Fair Play" League and our Ladies Team Manager received an award for Outstanding Contribution to Cheshire Women's Cricket.



In terms of player progression we were very proud to see Robbie Jones (son of our 2nd XI Captain) recently selected to play for the England Under 19's World Cup Squad in Dubai.

One of the Junior players in the Ladies Team has been elected as Captain for the Under 17's Cheshire County Squad and two of our Junior boys are attending a Cricket Excellence course which can lead to the Cheshire squad.



If you are interesting playing cricket you would be more than welcome to come and join one of our training sessions or please contact secretary@oakmerecc.co.uk for more details.

Location: Overdale Lane, Oakmere, Northwich CW8 2EL

Website: www.oakmerecc.co.uk



The TACS Partnership

Cheshire Cricket League



Cheshire Womens Cricket League



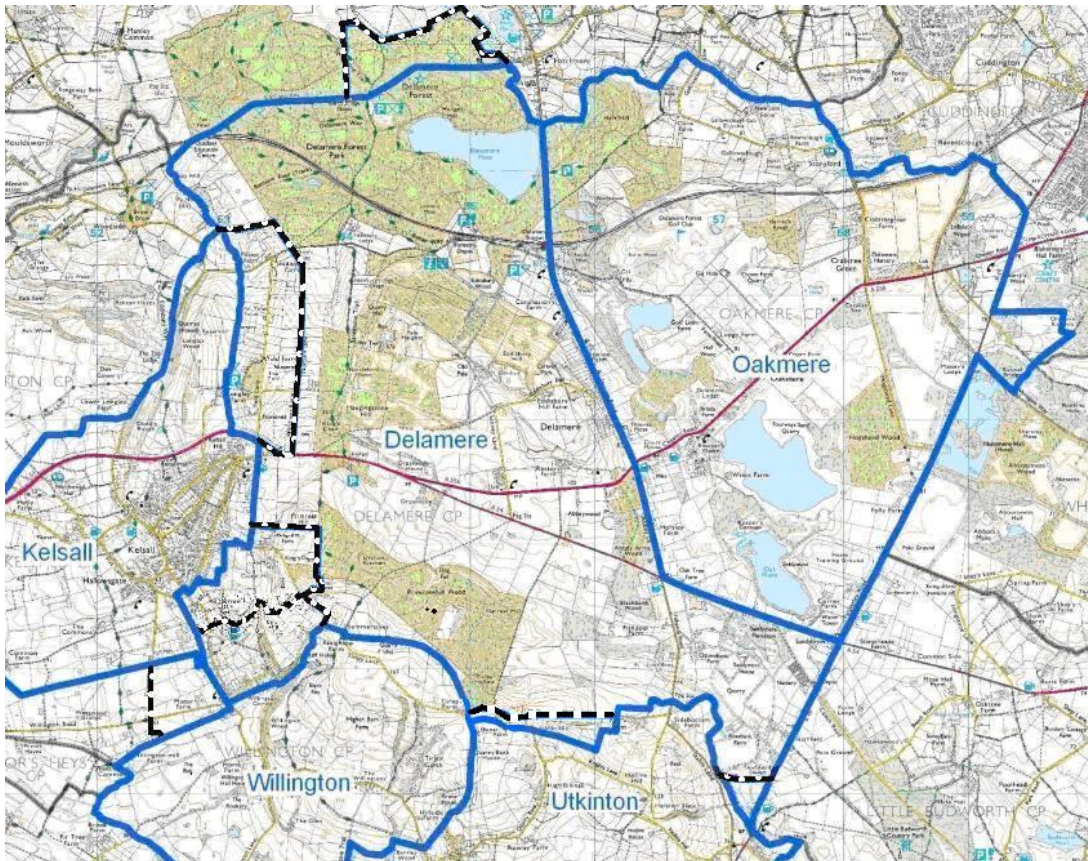
Hello and goodbye - parish boundary changes

Barring some unforeseen spanner in the works, the next year will be a momentous one for both our Parish Councils. They will be disbanded, to be replaced by two new ones, one for Willington and one for a combined parish of Delamere and Oakmere. Subject to ratification by the full Cheshire West and Chester Council, the final recommendations of the Community Governance Review Committee will come into

effect in April/May 2015.

Willington has no parish council at present, but will have one after absorbing part of Delamere and part of Tarvin. Other parts of Delamere will go into Kelsall, others will go to Utkinton, and part of Norley will become part of the new Delamere and Oakmere. Full details can be found on the website:

www.delamereandoakmere.co.uk/delamere-parish-council/notice-board



Proposed changes to parish boundaries

So it will be a sad goodbye to those of you in the area to the west of Morrey's Lane and Norton's Lane (which goes into Kelsall), to the area around Waste Lane and Kelsborrow Castle (which also goes to Kelsall), to those around Willington Corner (which goes to Willington), and to the areas to the south of Heath's Lane and Sadler's Lane (which go to Utkinton). Meanwhile Delamere and Oakmere, which already share the newsletter, the Community Centre and both churches, will be re-united. When the parish of Delamere was created in 1812 it included both Delamere and Oakmere,

as is still the case for parish of St Peter's. The northern parts of the forest that are currently in Manley and Norley were also part of the original parish. The Manley part will stay where it is, but the Norley part will come back.

Delamere and Oakmere will be separate wards in the new parish, each with six councillors. Willington's new parish council will have five councillors. All will be elected in May 2015, at the same time as the elections for Cheshire West and Chester Council.

Views from the past



The Abbey Arms, postmark 1907



The Abbey Arms, postmark 1909



The Abbey Arms, postmark 1919



The Fishpool Inn, undated



Delamere Station, postmark 1912



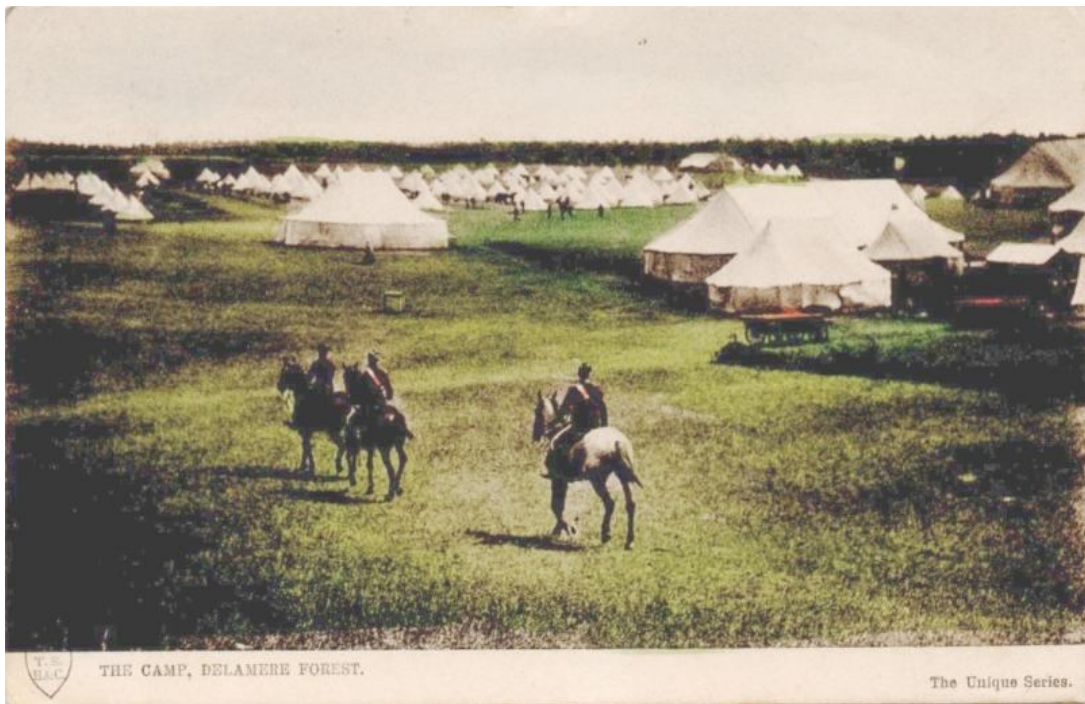
Caravan in the forest, postmark 1929



Ashton Road, postmark 1909



The forest struck by lightning 1915



The Camp, Delamere Forest. The card was postmarked 1907, but the picture may date from 1902/3, when mounted infantry of the Cheshire Yeomanry were camped on what is now the golf course (probably after serving in South Africa during the Boer War).

... and the not-so-distant past



The great escape - the Ackerleys' playhouse after the gales

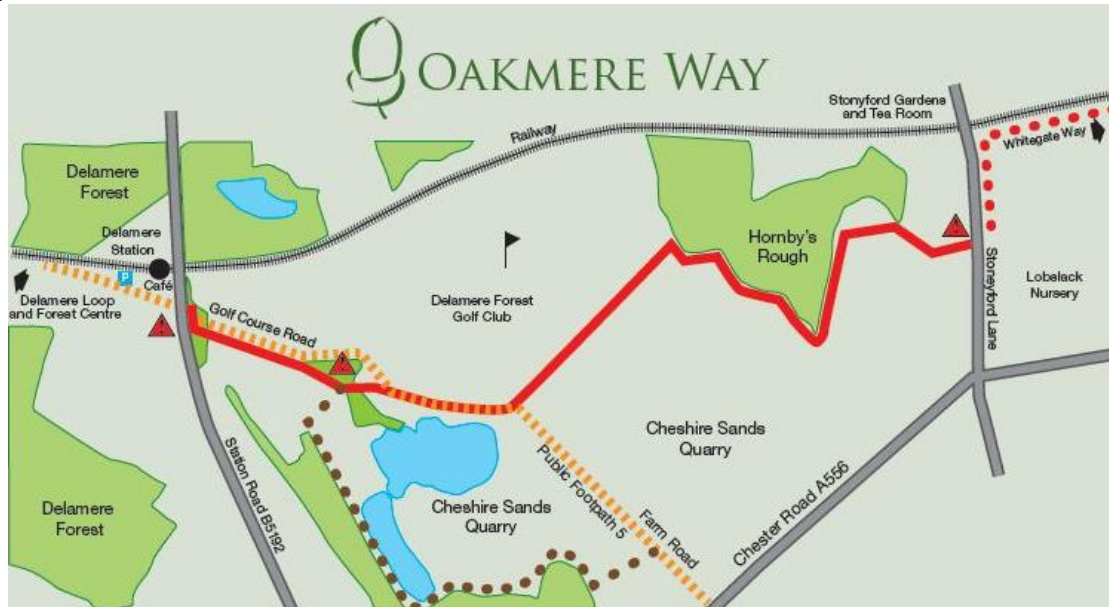


Friday coffee mornings in the Community Centre

Oakmere Way

A two mile footpath, bridleway and cycle path now links the Linnere visitor centre to the Whitegate Way and on to Winsford. The new Oakmere Way runs alongside Golf Course Road and past Hornby's Rough to Stonyford Lane, where it meets a link to the Whitegate Way at Cuddington.

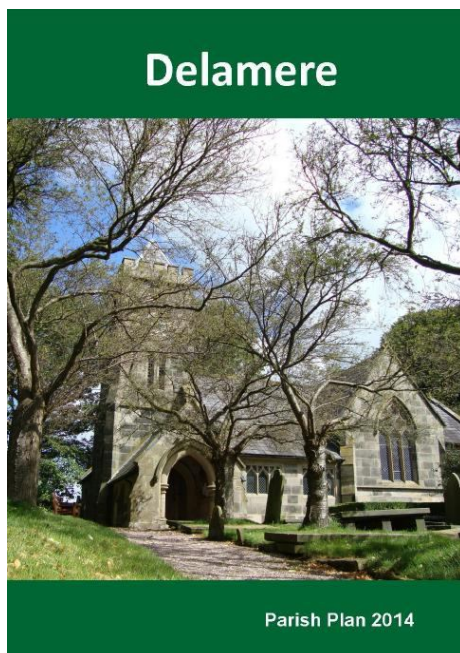
The multi-user route was initiated by Mid Cheshire Bridleway Association in partnership with the landowners (Lafarge Tarmac and The Crown Estate), with support from CW&C, the Forestry Commission, Marketing Cheshire and Natural England's Paths for Communities scheme.



Delamere parish plan - launch meeting

Thanks to everyone who completed the questionnaires and the volunteers who helped prepare the action plans, the Delamere Parish Plan is now almost complete.

The Plan will be launched at the Annual Parish Meeting to be held in the Community Centre on the evening of **Tuesday 20th May**. Everyone in the parish is invited. There will be a free buffet, and even a glass of wine! Put the date in your diaries, and please do come along, to hear about what is planned for the parish and contribute to the discussion of what needs to be done now. The launch will be preceded by a brief report on what the Parish Council has been doing in the past year, and an opportunity to question councillors on their activities.



Delamere's lost mosses

by Katie Piercy

If you go down to the woods today, you're sure for a big surprise. Cheshire Wildlife Trust, in partnership with the Forestry Commission, are working hard within Delamere Forest to bring some of the lost mossland habitats back to life. Formed during the last Ice Age, through the powerful action of glaciers, 'kettle holes' (indentations made when icebergs were left stranded on the land) were created that later filled with water and vegetation. Thousands of years on, these Delamere mosslands are now of national importance, rivalling the Norfolk

Broads and the Cumbrian Lakes for the wetland wildlife they support.

The ‘mossland’ habitats within Delamere consist of a series of peat basins. These are areas where peat-forming vegetation (plants which lay down peat as they grow) has survived for thousands of years, in some cases building up peat layers of over six meters in depth – that’s deep enough to easily bury a double-decker bus. Plants such as the carnivorous sundew depend on these areas, as well as creatures like the nationally endangered great crested newt, the snipe and the recently reintroduced white-faced darter dragonfly.’

However, these water-logged wonderlands aren’t simply important for the wildlife they support; they are also incredibly valuable for the carbon stored within them, which would add to the greenhouse gases in our atmosphere if released (through burning the peat or allowing it to dry out). Another benefit of these peatland habitats is in the water that they store. Acting as a massive sponge, these areas help prevent and mitigate flooding in the regions surrounding them, reducing the need for expensive man-made flood defences.



Although we know how important these mosslands are, what can be done to protect them? In the Napoleonic era, before people understood the value of these habitats, deep ditches were dug through the peatlands (in attempts to drain the water from them), and trees were planted. Now, with funding provided by WREN, Forestry Commission, Natural England and Cheshire West and Chester Council, we are attempting to turn back time by removing a proportion of the trees growing on these valuable habitats, and blocking the ditches that drain them. Great Blakemere, itself a peatland basin, was deforested and flooded by

the Forestry Commission in 1994, and has since



The insect-eating round-leaved sundew, by Vicky Nall

then become a haven for wetland species.

With so many people and organisations working together to restore and protect these amazing wetland habitats it looks like there is a bright future ahead for the Delamere’s Lost Mosses. If you are interested in joining the Delamere Mosslands Volunteer group or if you would like to know more about the project, please contact Katie Piercy on:

07971052162

kpiercy@cheshirewt.org.uk

Eddisbury Fruit Farm

Sadly, the home of Cheshire Apple Juice and Cider is closing from the end of March, with the retirement of Colin and Monica Haworth. Eddisbury Fruit Farm was started in 1936 by Leslie Haworth, Colin’s father, and the family have successfully adapted to meet changing needs for over 78 years.

During World War 2 the farm accommodated the Land Army Girls, and picked blackcurrants for Robinsons to make blackcurrant cordial. Polish fruit pickers from Delamere camp were employed alongside local workers, and although they were later re-housed near Northwich they continued to work at the fruit farm for many years, often into the next generation. In the early years fresh fruit was picked daily for the wholesale markets in Liverpool and Manchester, until the decline of small greengrocers in the 1990’s. Farmers’ Markets then started to appear, instigated by the NFU, throwing a lifeline to

small farming businesses. So long as you grew it, reared it or made it you could sell it.



Colin Howarth at the fruit farm

Eddisbury Fruit Farm traded at most of the Farmers' Markets in the North West, at the annual apple festivals at Erddig and Quarry Bank Mill, and at the annual Cheshire Show.

Cheshire Apple Juice was started in 1996 by Colin's stepson Michael Dykes, who had learnt the expertise at Pershore College. The juice trade flourished from 6000 bottles per year to over 80,000. The fruit farm grew 26 different varieties of apple, mostly going into the 12 single varieties of apple juice, and the rest into cider. Both the apple juice and the cider have won many "best beverage" awards, and in 2009-2010 the fruit farm was made Cheshire Life Magazine "Food Hero of the Year". The Campaign to Protect Rural England awarded the fruit farm the "Buy Local" Award in 2006, in recognition of the monthly Farmers' Market held since 1999. The Fruit Farm will however be remembered by most of its customers as the place to pick their own fruit, from rhubarb, gooseberries, tayberries, loganberries, raspberries, blackberries, currants (red, black and white), plums, damsons, apple and pears, and not forgetting the delicious strawberries.

Colin and Monica retire with lots of very happy memories, not only of all the traders they have met along the way, but most of all, the staff who have toiled come rain or shine to pick the fruit for their very valued and loyal customers.

*Colin & Monica Haworth, 01829 751300,
Eddisbury Fruit Farm, Home of Cheshire Apple
Juice and Cheshire Cider*

Spoilt for choice!

Fancy a cup of coffee, lunch or afternoon tea? In Delamere and Oakmere we don't have to move out of our own villages to find plenty of variety.



Starting from the Oakmere boundary with Cuddington and Sandiway, just off the A556 is the tea room at Stonyford Cottage Gardens (March to October, closed on Mondays except bank holidays), currently under refurbishment, but it will reopen in April and be serving lunches as well by Easter. Back on the main road is the newly opened Fourways Grill and Café, which offers good value snacks and lunches and not just for motor cyclists, and beyond the big crossroads, the Abbeywood coffee shop provides a relaxed environment for coffee, lunch or tea. Check opening times.

Off the main roads, but right on the Sandstone trail to the south, is the popular Summertrees tea room (not open on Fridays or Mondays unless a bank holiday)



where walkers enjoy snacks or lunch. In the forest to the north is the station café – delicious ice creams here, and the forest café at Linnere, both of which also serve snacks and lunches.



Then there are the pubs where you can dine as well: Forest View Inn on Gallowscough Lane, Vale Royal Abbey Arms, the newly refurbished Fishpool Inn and the secluded Boot Inn in Willington. Between them they offer us quite a varied range of lunching or dining.

If we want to venture a little further afield, a few minutes drive takes us to the many possibilities on the A49, or Kelsall, Mouldsworth and Hatchmere.

Happy eating and drinking!



EMBRACE PSYCHOLOGICAL SERVICES

Embracing Life...Hope...Change



The British
Psychological Society
Promoting excellence in psychology

hcpc health & care
professions
council

www.embrace-psych.co.uk

We offer quality Clinical Psychology and Psychotherapy services from a HCPC-Registered and BPS Chartered clinical psychologist and ACAT-accredited practitioner in Cognitive Analytic Therapy.

We specialise in the assessment and treatment of individuals with a range of psychological difficulties including:

Stress
Anxiety, panic attacks and phobias
Depression
Poor confidence and low self-esteem
Loss and bereavement
Relationship difficulties
Interpersonal and personality difficulties
Trauma and abuse

We also specialise in working with people who experience ***chronic pain*** and ***chronic fatigue***.

ACAT

The Association for Cognitive Analytic Therapy

Whitehall Business Centre, 75 School Lane, Hartford CW8 1PF

Tel: 0780 175 6808

E: contact@embrace-psych.co.uk

Alexander Caravan Services



Caravan/motorhome servicing and repairs
Horsebox and trailer repairs
Parts and accessories
Calor gas stockists
and now - Calor woodfuels and coal!

www.alexandercaravanservices.co.uk

Stud farm buildings, Oakmere, Cheshire

01606 883613



*Extending or remodelling your home?
Looking for the best use of space?
Want fresh ideas with designer flair?*

- Planning Applications
- Building Regulations
- 3D Visualisations
- New build designs
- Renovation & Conversion

*Nicola Gibson
nicola@njgdesign.co.uk
07813 034552 / 01606 301171
Dairy House Farm, Oakmere*

Calling all Nifty 50's and Super 60's!!

*"Come and join me
for a low impact, full body
work out aimed at the over
50's."*



Every Monday morning 9.30 am at
Delamere Park Club House
Contact Fiona on: 07850 879 597 or
feeboxercise@gmail.com to book or for
more info. All Welcome!

Club Class
24-7 Cheshire Taxi
01606 46666

Your number one choice for:

- Shopping Trips
- Nights Out
- Airport Transfers (single & returns)
- Executive Travel (on request)
- Wheelchair Transport
- Account & Corporate Bookings
- School Runs
- 4, 5, 6, 7 & 8 Seat Vehicles
- Special Events
- Train, Boat & Coach Rendezvous

We are Always Open
& Always Happy To Help

exhibition of art

by
Weaver Vale Art Society Members
on
11 to 13 April 2014
at
Acton Bridge Parish Rooms, Acton Bridge
Entry & Catalogue - £1.00

Weaver Vale Art Society only opened its doors in November 2013 but already has an established group of regular artists attending its weekly sessions in Acton Bridge.

This Exhibition is being staged to demonstrate the talents of these members & to afford the public the opportunity to purchase the original art work & prints of local artists at affordable prices. There will be over 100 paintings on display with 80% of them being offered for sale.

More info & contact:

<https://www.facebook.com/pages/Weaver-Vale-Art-Society/175877522601404>
wvas@outlook.com Tel: 01606 74707

Proposed housing development on the Marley site

As reported above by our Parish Council chairmen, Crown Estate have now submitted their outline planning application for the Marley site. The proposal is for up to 180 new homes, 4 of which are two bedroom bungalows, 26 two bedroom houses, 63 three bedroom houses and 87 with four or more bedrooms. The bungalows and 11 of the smaller houses will be dedicated retirement accommodation. Allotments are provided near the retirement homes, with a public open space and play area to the south of the site. Access to the site for pedestrians and

vehicles will be via a new roundabout on Station Road, plus connections to the new Oakmere Way and the public footpath across to Farm Road. Parking is primarily within each property, along with small parking courts for the dwellings on the eastern side. Some of the suggestions made by both Parish Councils and other participants in the consultation have been incorporated into the proposals, but not all. Both councils will be making further representations. Full details are available on the CW&C website (go to

<http://pa.cheshirewestandchester.gov.uk/online-applications/> and enter "Marley" in the search box). The deadline for comments is 25 April.



... whoops!

One of the requests made by both Parish Councils in the public consultation on the Marley development was for improvement of the Abbey Arms crossroads to cater for the extra traffic. The planning application estimates that peak hour traffic at the junction will go up by 26%, but says no action is needed, because according to their computer, the extra traffic will result in a maximum queue length at the junction of no more than *one vehicle*, and a maximum delay of *11 seconds*! We all know

that's nonsense. So do Crown Estate, or they would if they read what they have written. Elsewhere in the document they report the actual situation, before the development has taken place, without any of the other changes that are creating more traffic, more scary moments and more potential for nasty accidents, as measured on one particular weekday in 2013. The maximum queue length observed was 10 vehicles, with a maximum delay of well over two minutes. Should we club together to buy them a new computer?



STONYFORD COTTAGE
GARDENS & NURSERY

SPRING 2014

Open NOW – Tues to Sun 10-5pm

Visit YOUR local Family run Garden Nursery. Where you will be greeted with a wealth of expertise along with an excellent choice of plants.



The Nursery

We are specialist plant growers & this year marks our 20th Anniversary !! We grow a good range of Perennials, Shrubs & Alpines. We sell quality plants here and all over Europe, we pride ourselves in supplying many rare & sought after varieties.



stonyford_logo.jpg

The Tea Room

New refurbished tearoom open April 2014. Set in our beautiful garden setting we serve a good selection of tasty snacks & light meals. Enjoy our scrumptious tea cakes & delicious cream teas.



The Gardens

This is an informal garden set around a tranquil pool, where shade & moisture loving plants including Candelabra Primulas, Astilbes & Hostas grow amongst natural wooded areas. Paths lead the visitor over bridges, to an unusual island where groups of Alder & Willow grow through the water. Reminiscent of "the Florida Everglades" Entry fee applies only to gardens - Adults £3.50 Children free

What's on - 2014

Plant Hunters Fair 26th May
NGS Days 1st June & 10th August
Outdoor Theatre 'The Taming of the Shrew' 20th & 21st August

Stonyford Lane, Oakmere, Northwich, Cheshire, CW8 2TF

Tel: 01606 888970 email: stonyfordcottage@yahoo.co.uk Facebook: www.stonyfordcottagegardenursery.co.uk

WILKINS
ESTABLISHED 1895
CHIMNEY SWEEP.

- ✦ TRADITIONAL BRUSH AND VACUUM SERVICE
- ✦ NESTS REMOVED
- ✦ CAGES, CAPS AND COWLS FITTED
- ✦ SWEEPING CERTIFICATES ISSUED
- ✦ PROFESSIONAL, CLEAN SERVICE
- ✦ FULLY INSURED
- ✦ POLICE CHECKED
- ✦ CARD PAYMENT ACCEPTED

01928 897 294



wilkinschimneysweep.co.uk/westcheshire

Spanns garage

*Motorcycles, Scooters, Trykes, Quads
Cars, Vans and Three Wheel Cars
MOTs, Tyres, Servicing, Repairs, Air
Conditioning, Diagnostics
Collection from local area*

Opening Hours:

8.30 am – 5.30 pm Monday to Friday
8.00 am – 1.00 pm Saturday (MOTs only)

Tel: 01606 882219

Fax: 01606 881700

Email: spanns.garage@zen.co.uk

www.spannsgarage.co.uk

Dalefords Lane

Whitegate

CW8 2BW

Infrastructure updates

Dr Bob Clipperton

Broadband

The upgrade of Broadband in Delamere and Oakmere was originally scheduled to start next autumn, but Connecting Cheshire and BTOpenreach have announced that it has been brought forward, to start in March/April this year. There are some pockets in both Delamere and Oakmere that are still uncertain, but most of us should get a massively improved broadband speed by the autumn. This means much faster computer communications, and that TV services such as BBC iPlayer will become available through the telephone.

Mains gas

As part of the Marley Tiles development, Crown Estates have said they will extend the mains gas pipe currently finishing at the Four Oaks development. The exact detail of that proposed extension is not yet clear but it is expected to go to the Abbey Arms junction and then down Station Road. Informal talks have just started with CW&C Rural Managers on how funding can be obtained for side-extensions to adjacent areas. If you are keen to connect to mains gas please register an interest by contacting the editor.

Station bridge

As part of the Forestry Commission's development proposals at Linmere, CW&C are planning to get funding for footpath construction around the Station road bridge. However, a decision on the planning application will now be subject to a public inquiry. This will not start until June, the decision may not be made for many months, and if the application is refused Forestry Commission funding may not be available. Informal talks with various CW&C representatives have started to explore other funding sources to get work started soon.

Community Forums

Community Forums are a means through which CW&C ward councillors and representatives of CW&C departments can give a public presentation on a topic and answer questions. For example, several years ago a representative of CW&C planning department gave a talk in Kelsall Community Centre on the Local Plan that was being developed. With the great

changes currently occurring there are many such issues of interest, such as traffic issues in the villages, the local governance survey, how new planning laws might affect our rural area, CW&C energy grants and so on. If you have any suggestions or detailed questions for any such topic, or if you have any views on whether a forum should be held specifically for Delamere and Oakmere or for all the villages in our ward, please contact the editor or a Parish Councillor.

Thank you! To all the "village carol singers"

who turned up on Christmas Eve outside Delamere Stores. Thank you to all the customers, who supported us and wished us well, even joining in with the singing and the fun, and for post event donations. Thank you to Lee Cartwright and Joe for your hospitality, support and seasonal sustenance. £60 was raised in all with £20 donated to St.Peter's Church, £20 to Oakmere Methodist Chapel and £20 to the Community Centre. It was also a good chance for everyone to get together at this special time. By popular request it seems we might be meeting up again next year!

Gloria

Obituary

Freda Worrall died in hospital on 5th January 2014. It was a sad time for her family as Freda never recovered from a fall in her home over Christmas.

I was very sorry that I only heard of her death the day before her funeral. Nevertheless I found Chester Crematorium early on a chilly morning where I had time to reflect before the service. Later in the day there was a memorial service at St. Philip's church in Kelsall where we sang and also listened to a lovely eulogy.

Freda came from Winsford being Cheshire born and bred. Being one of five children, she attended the school, still to be seen in the town, leaving at fourteen to start work. I can just imagine what a lively spirited girl she must have been because that was how she still seemed to me. She met Reg Worrall (there's a Cheshire name), married him and went to live in his home village of Kelsall. Sadly their only son died some time ago I believe.

There will be many of you who knew Freda far better than I. Perhaps you recall the bowls matches she played or the camaraderie you found working alongside her in the old Co-op in Church Street and prior to that, was it Ellis's?

Nothing held her back and I know she was delighted when she bought a new park home here in Delamere during the 1990's. I used to see her going out in her immaculate blue car some evenings, no doubt to a bowls match, so it must have been a bitter blow when surgery to her shoulder was unsuccessful and she became housebound. She was very well supported by her close family, and community carers visited

daily. I sometimes used to weed her flower beds which pleased her. How many of us wish we had popped in more often but were engrossed in our own affairs. However, Freda would not have wished us to live with remorse.

I think of some words by David Harkins from *She is Gone*: "You can shed tears because she is gone, or you can smile because she has lived". I look out of my window at the golden sunshine lighting up the daffodils. The sky is a clear blue. Wonderful...

Maggie Matthews



**DO YOU HAVE A PHOTO OF DELAMERE
OR OAKMERE THAT YOU'RE PROUD OF?
WANT TO SHARE IT?**

We're looking for photographs to promote our beautiful area, and include in the Delamere and Oakmere Community Website gallery. It could be:

- a landscape
- wildlife
- an action scene or
- anything interesting

Please send it to the webmaster - Bernie Holmes at
do_webmaster2@yahoo.co.uk

Images must be of the area and you must be prepared to have them displayed without any charge or limitation

www.delamereandoakmere.co.uk

your local
PIANO TEACHER



Lessons from beginners to Grade 8
standard

Composition & Improvisation included

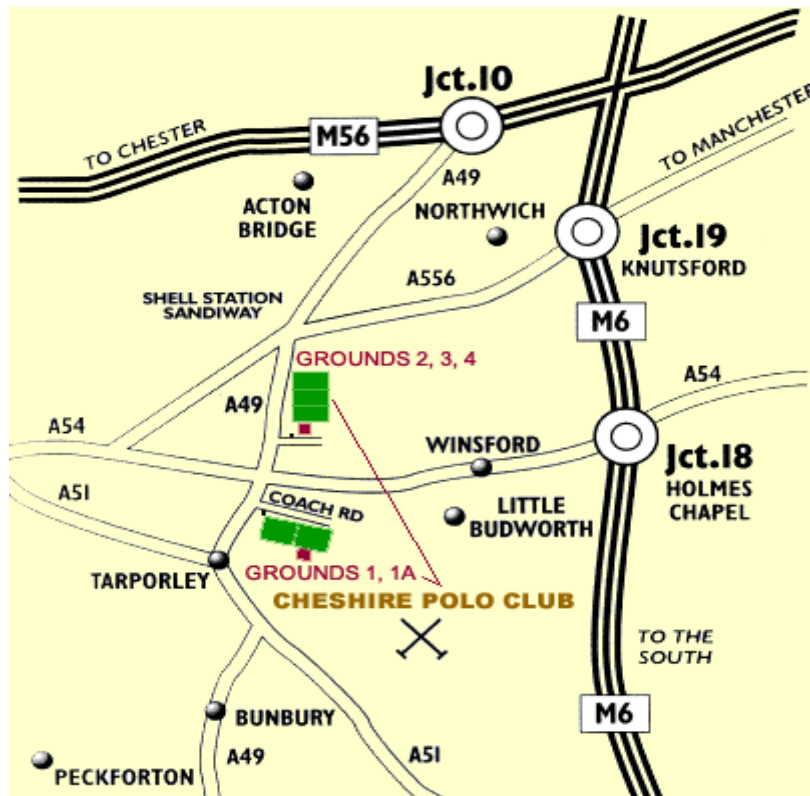
STEPHEN LUCAS

A.T.C.L.(Mus.Ed.), Cert. of Mus.Ed.

Performers Cert.

16 Beeston Drive, Winsford,
CW7 1EN

Tel. No.: 01606 620070



Cheshire Polo Club – Grounds Off A49 Forest Road, Tarporley, Cheshire

Nos. 1 & 1a Grounds are accessed via Coach Road

SAT NAV CW6 9DT

Nos. 2, 3 & 4 Grounds and Marquee are accessed via Longstone Lane

SAT NAV CW6 9ES

VISITORS ARE ALWAYS WELCOME

Come and watch some great polo every weekend from 12.30 p.m. – entry is free. A small charge of £10 per car will be made to non-members on certain tournament days. Bring the family and a picnic and make a day of it, or maybe you would prefer to become a Cheshire Day Member at a cost of just £5 per person and take advantage of the facilities of our clubhouse or members' marquee. Catering facilities are available every weekend.

For all enquiries about fixtures and joining the Club please contact
Cheshire Polo Club, The Polo Office, Edge House, Smithy Bank, Acton, Nantwich, Cheshire CW5 8LF.

Tel: 01270 611100 or Email: info@cheshirepoloclub.co.uk

Website: www.cheshirepoloclub.com

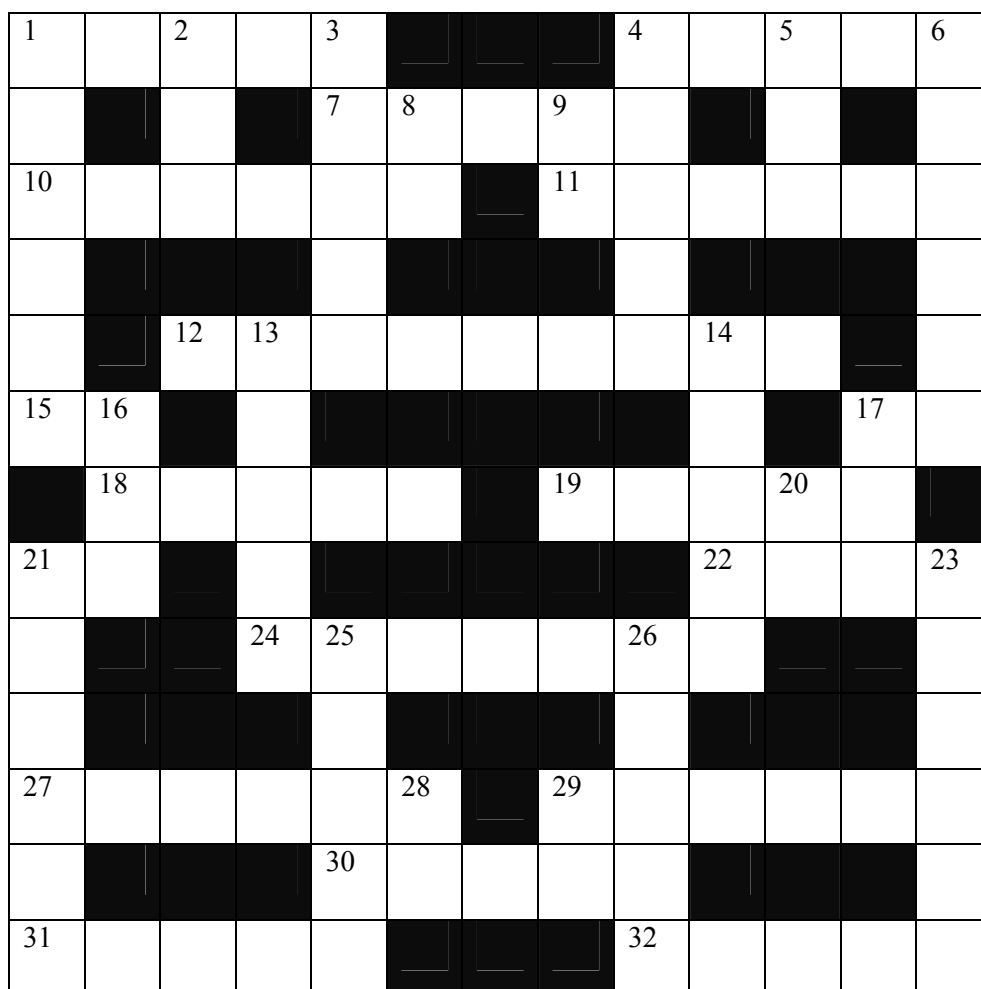
For all Marketing, Sponsorship or Events please contact Mark Cramb

Tel: 07944 578754 or Email: mark@cheshirepoloclub.co.uk



Crossword

By Yeti

Across

1. A buzzer in the base of this modern machine (5)
2. This confused Croat makes a play (5)
7. Baby carriages get mixed up on slopes (5)
10. This cream has much in, with nothing in! (6)
11. Reserved including one listings mag - don't be like that! (6)
12. One is ironed – affected favourably? (9)
15. Be active with money, no revulsion (2).
17. A cockney's cured meat? (2)
18. Lift with one's own device is self-defeating (5)
19. Top card mixed with extra clear television was painful (5)
21. Me on a Roman morning (2)
22. Sounds like a whirlpool in Ambridge (5)
24. Flightless bird with old fashioned power (7)
27. 6 wings but only two legs for this superior being (6)

29. Terrify and enthrall, recording sold millions, but don't hesitate (6)
30. No-one had heard of this speed till they were fined for fixing it! (5)
31. Eleven, twelve, do it with a spade (5)
32. It's not a bit funny if you hurt this! (5)

Down

1. Took a slow walk without the saint – what the small boy did with his marbles (6)
2. The flying mouse of operatic appeal (3)
3. This fighting group too French about the ring. (5)
4. Residue of fire or sporting event (5)
5. The rodent runs back and gets black and sticky (3)
6. This beat with colour added makes for hybrid music (6)
8. The girl stops short and becomes indefinite (2)

9. Afterthought – can stand for a drugs organisation (2)
13. In late summer this sounds like and makes for an amazing maze (5)
14. A biblical girl lost snake's head from the anaesthetic (5)
16. Surprised by Bond's boss makes for resistance (3)
17. Sum up one theologian (3)
20. King loses custody for his pet name. (2)
21. Lowered with stand set in the modern era (6)
23. Cowardly like 26 (6)
25. Flag or sweet stuff from this tree (5)
26. Scottish impatience with scripture lesson is sort of golden (5)
28. Speak up for email greeting (2)
29. Toe without end direction (2)

Send your answers to do_newseditor@yahoo.uk, or by post/hand to 71 Station Road, CW8 2HZ. As before the only prize is fame! For the Christmas issue the fame goes, appropriately enough, to Robin (redbreast?) Ackerley.

Answers to crossword 29

ACROSS 1 Discomforted 6 Don 9 It 11 Sodastream 13 No 14 Kelp 16 Eider 19 Satellite 21 Wake 23 Each 24 Ooh 25 Local 26 Pi 27 So 29 Knights 31 Old 33 Loot 35 Tee 36 Pale 39 RN 41 Sober 43 Disarray 45 Ens 46 No 47 Frequented 49 Runes 50 It 52 Mere 53 Ranks 54 Dance

DOWN 1 Dismembers 2 Cha 3 Forest walk 4 Tam 5 Din 7 Oakmere Hall 8 Happy Christmas 10 To 12 Ant 15 Ale 17 Droll 18 Radical 20 Inches 22 Kiwi 24 Ochre 28 Omen 30 Nap 32 Delamere 34 Ogress 35 Truffle 37 Ley 38 Go 40 Bisque 41 Stores 42 Barn 44 Rotor 48 Dun 50 IC 51 Te

DELAMERE GOLDEN CLUB - A Great Day Out!

Delamere Golden Club is a long established group who meet regularly (every other Wednesday afternoon) at Delamere Community Centre.

If you are looking for a welcoming club to spend your afternoons, with likeminded people, enjoying a regular organised programme, including speakers, luncheons, race days, and awaydays, The Golden Club is for you! It is the ideal opportunity to meet new friends, over refreshments and stimulating afternoons.

New members are guaranteed a friendly welcome.

For further information, plus a copy of our 2014 Programme, contact June Budd on 07473666339

Delamere Golden Club is also affiliated with Ashworth Time Bank/Rural Wellbeing, linking communities together.

Poetry corner

Another Golden Poem by Mrs Thelma Ashbrook

Are you lonesome, feeling blue?
Well, there is something you can do.
Don't sit around, your bum will spread,
you can have some fun instead.
I don't mean drinking in the pub,
no, come and join our Golden Club.

If you're a couple or just one only
there's really no need to be lonely.
Drink your tea and have a chat
you'll get a biscuit too with that.
A quiz comes round to every table
to find the answers if you're able.

There's meals, and outings sometimes too,
tell us what you'd like to do.
We'd love to have you here, you know,
so come and help our members grow.
And when your Golden Club time ends
you'll find you've made a few new friends.

Help needed!

Bob and June are having to give up their sterling work for the Golden Club, for health and family reasons. **Might you be prepared to step in, to help keep the club going?** If so please contact Bob Parr or June Budd on 01606 888117.

TRACS (UK) LTD



Kinesis FF29 NOW £1349



Raleigh Cameo Now £299



Kona Hula kids bike Now £325

Delamere Forest Bike Shop

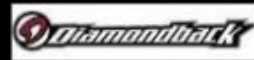
LINMERE VISITOR CENTRE
DELAMERE FOREST
CHESHIRE CW8 2JD

**NEW BIKES
NOW IN STOCK**

QUALITY BIKE HIRE

BIKE SERVICING

BIKE REPAIRS



Open Every Day 10am-6pm



www.tracs-uk.co.uk ■ Email: info@tracs-uk.co.uk

Tel: 01606 881802

Telephone numbers for accessing Council services

Textphone users should dial **18001 01606 867 670**

Important information about Social Services enquiries

- If you need to speak to the Adult Social Care ‘Gateway’ team please say when prompted ‘**Adult Social Care**’
- If you need to speak to Children’s Services please say ‘**Childrens**’

General phone numbers

Service	Telephone Number	Opening Hours
General Enquiries	0300 123 8 123	8am - 7pm (Monday - Friday)
Adult Social Care Gateway Team	0300 123 7034	Opening times
Benefits	0300 123 7 021	8am - 7pm (Monday - Friday)
Blue Badges	0300 123 7 040	8am - 7pm (Monday - Friday)
Building Control	0300 123 7 027	8am - 7pm (Monday - Friday)
Business Rates	0300 123 7 023	9am - 5pm (Monday - Friday)
Charisma Card	0300 123 7044	8am - 7pm (Monday - Friday)
Community Wardens	0300 123 7 033	8am - 7pm (Monday - Friday)
Concessionary Travel	0300 123 7 025	8am - 7pm (Monday - Friday)
Council and Democracy	0300 123 7 028	8am - 7pm (Monday - Friday)
Council Tax	0300 123 7 022	8am - 7pm (Monday - Friday)
Environmental Health (including Pest Control)	0300 123 7 038	8am - 7pm (Monday - Friday)
Fraud Hotline	0300 123 7 030	8am - 6pm (Monday - Friday)
HELP (Local welfare assistance)	0300 123 7065	9am - 5pm (Monday - Friday)
Highways	0300 123 7 036	8am - 7pm (Monday - Friday)
Housing Solutions advice line	0300 123 2442.	9am - 5pm (Monday, Tuesday, Thursday, Friday) 1pm-5pm (Wednesday)
Parish Council hotline	0300 123 7 049	8am - 7pm (Monday - Friday)
Parking (enquiries and fines)	0300 123 7 024	8am - 7pm (Monday - Friday)
Payments	0300 123 7 029	24 hours, 7 days a week
Planning and building control	0300 123 7027	8am - 7pm (Monday - Friday)
Press and Media Enquiries	01244 972216	8am - 6pm (Monday - Friday)
Registration of births, marriages and deaths	0300 123 7 037	8am - 7pm (Monday - Friday)
Schools and Free School Meals	0300 123 7 039	8am - 7pm (Monday - Friday)
Streetscene	0300 123 7 026	8am - 7pm (Monday - Friday)
Waste collection	0300 123 7 026	8am - 7pm (Monday - Friday)
Waste Permits/Waste Passes	0300 123 7 042	8am - 7pm (Monday - Friday)

Calls to 0300 numbers are charged at local rates whether from landlines, mobile phones or payphones. They are included as part of any inclusive minutes or discounts.

- [Ofcom information on 0300 numbers](#)

You can also contact us:

In person

- How to find our [Customer Service Centres and Council Offices](#).

By post

Cheshire West and Chester Council,
HQ,
58 Nicholas Street,
Chester,
CH1 2NP

Accessing Cheshire West and Chester Council information and services

Council information is also available in Audio, Braille and large print formats. We are also able to provide a BSL interpreter to support customers with accessing Council services.

- **Telephone:** 0300 123 8 123
- **Textphone (BT Text Direct):** 18001 01606 867 670
- **International Dialling:** +44 (0)1244 977989 (calls are charged at international rates)
- **Email:** equalities@cheshirewestandchester.gov.uk

Streetscene

http://www.cheshirewestandchester.gov.uk/residents/online_services/report_it/road_faults.aspx

Road faults

Please tell us about potholes, missing signs, broken street lights or any other road faults.

- Report it here: [online fault reporting system](#)
- Twitter: [@go_cheshirewest](#)
- In person: at any of our [customer service centres](#)
- Telephone: 0300 123 7036

It's Kelsall Hill

**EASTER WEEKEND
19TH-21ST APRIL 2014**

**3 days of British Eventing Horse Trials
New Advanced Intermediate class with
£3000 prize fund on Easter Monday !!**

Also

**Sport Horse Show on Easter Monday:
SHB (GB) affiliated with Hunter & Working Hunter Classes
(Hunters & WH classes are qualifiers for the Royal International Horse Show)**


**Fantastic spectacle set in beautiful countryside,
with plenty of food concessions and trade stands**

Spectators Welcome: only £5 to park your car

For more information: www.kelsallhill.co.uk or call 07809689972

Delamere Community Association

Registered Charity Number 504881



Your invitation to join the '100 Club'

11th March 2014

Dear DCA Member

We would like to invite you to join the DCA "100 Club" for the 2014/15 season. The '100 Club' started in May 2007 and has just completed its seventh successful year of operation. It is a very simple and fun way for the DCA and its Members to fundraise for the Club, whilst at the same time giving You the chance to win cash prizes during four 'normal draws' in the year, together with the chance to win DOUBLE prize money in the 2014 AGM 'Super Draw' ... and ... there is a further draw for "non-winning numbers" at the end of the '100 Club' year.

That's up to 18 chances in all (6 draws with 3 prizes in each) to win cash prizes and support your local Community Centre all for the sum of £1 per month !

Your Questions answered:

- ❑ The cost to participate in the '100 Club' is just £1 per month – that's £12 per year **payable annually in advance.**
- ❑ **£700** to be repaid as prize money throughout the year. (see Note 1 overleaf)
- ❑ In May, November, January and March of each DCA financial year there is a 'Draw' for 3 prizes – **1st prize £50, second prize £30 and third prize £20.** The first 'Draw' of the year takes place at the May DCA Committee Meeting.
- ❑ In addition, **each year** at the Club's AGM, double prize money is given away in the '**AGM Super Draw**'. For the '**Super Draw**', **£100 is given as a first prize, £60 to second and £40 to third.**
- ❑ There is also an annual '**Non-Winning numbers Draw**' held at the end of the DCA Financial Year for all the numbers in the "100 Club" which have not won a prize during the previous year. **The prize money is 1st prize £50, second prize £30 and third prize £20.**
- ❑ Apart from the 'Non-Winning numbers Draw', all numbers purchased will be entered into every 'draw'. Therefore, a number is eligible for more than one prize during the year.
- ❑ A Member of the DCA is allowed to subscribe for up to 2 numbers. Each number is valued at £12 per annum and should be paid for by cheque annually in advance.
- ❑ The prize winning numbers, as well as the Members/numbers of the DCA '100 Club', are displayed on the entrance hall notice-board in the Community Centre throughout the year.

Please find the application form to join the '100 Club' overleaf. Send your signed application form together with your cheque to the Organiser by 7th April 2014 *

Remember - the '100 Club' raises funds for the Community Centre and it also gives You the chance to win cash prizes.

Thank you

The Committee of Delamere Community Association

DCA Annual General Meeting is Tuesday 1st July 2014 at 7.30p.m.

Membership of the DCA is £3.00 per year

Delamere Community Association '100 Club'

Rules

1. The Club is called the "100 Club".
2. The object of the Club shall be to raise funds for the Delamere Community Association (DCA) and the upkeep and maintenance of the Delamere Community Centre.
3. The '100 Club' is available to fully paid up Members of DCA.
4. A Member shall pay £12 to join the '100 Club' for a 12-month period in advance, for each number allocated to them.
5. The 12 month period will be in line with the DCA Financial Year i.e. 1st May – 30th April.
6. The payment of £12 for the 12-month period **to be in the hands of the Organiser by Monday 7th April 2014**
7. Each DCA Member is entitled to hold a maximum of 2 numbers. (i.e. £24 per year)
8. Payment should be made by cheque payable to "**Delamere Community Association**".
9. The entry fees are non refundable (but see Note 1 below).
10. The Organiser will allocate the '100 Club' numbers and Participants will not be able to choose their own numbers.
11. The '100 Club' numbers allocated are not transferable.
12. Members of the DCA '100 Club' will participate in 4 'normal' draws per DCA Financial Year i.e. May, November, January and March, plus the AGM 'Super' Draw and the end of financial year 'Non-Winning numbers' draw.
13. The prizes for the 'normal' draws and also the 'Non-Winning numbers' draw shall be 1st prize -£50, second prize - £30, and third prize - £20.
14. The prizes for the AGM Super Draw will be £100, £60 and £40.
15. The draws will take place at a DCA Committee Meeting, DCA AGM or another DCA function as appropriate.
16. The '100 Club' Member agrees that, in the event of winning a prize, their name (but not their address) and winning number, will be published on the DCA notice board and also in the local newsletter when possible.
17. In the case of special circumstances, the decision of the Organiser is final.

Note 1:

In the event that insufficient applications are received, the '100 Club' will be cancelled and all cheques destroyed. A notice advising this will be placed on the DCA Notice board.

Application Form – please complete:

Your Name.....

Address.....

Postcode..... Tel No..... Email:

I agree to the above rules, which relate to the DCA '100 Club'

Signed..... Dated.....

****** Please return this form by 7th April 2014 ******

to the organiser with your cheque made out to

Delamere Community Association

**The '100 Club' Organiser is the Delamere Community Association Chair Person
Mrs E Macpherson, 11 Delamere Grove, Delamere CW8 2JJ 01606 301762**

These boxes are for DCA admin use only →	Payment Details	Number(s) allocated
--	-----------------	---------------------

DCA Annual General Meeting is Tuesday 1st July 2014 at 7.30p.m.

Membership of the DCA is £3.00 per year