

Delamere and Oakmere News



Number 33

Spring 2015



Photo by Barry Jones

In this issue:

- **Elections for the two new Parish Councils**
- **Memories of Parish Councils past**
- **Remembrance Sunday memories**

Forthcoming events

Church services

St Peter's Church, Delamere

Regular services

Every Sunday at 8am	Holy Communion
On the first and third Sunday at 10.30am	Holy Communion with hymns
On the second Sunday at 10.30am	Family Service
On the fourth and fifth Sunday at 10.30am	Morning Worship

Easter services

2 nd Apr Maundy Thursday	7.00pm	Holy Communion
3 rd Apr Good Friday	10.30am	Morning Worship, and hot cross buns in the Rectory
5 th Apr Easter Day	8.00am	Holy Communion
	10.30am	Special Family Service with Holy Communion
7 th Apr Easter Tuesday	10.30am	Holy Communion

Oakmere Methodist Church

In the main church at 10.45am every Sunday morning for a service led by a Methodist Local Preacher or Minister. One service a month includes the sacrament of Holy Communion, led by a Minister (Presbyter).
Contacts: Anne or Eric Wright (01829 732950) or Rev Denise Harding (01928 733180).

Delamere and District Golden Club

Wed. 18th March	2-4pm	Learn to Relax (Healthy Living Centre)
Wed. 1st April	1-4pm	Lunch and Annual General Meeting.
Wed. 15th April	2-4pm	Indoor Games (large and small items, including table tennis!)
Wed. 29th April	2-4pm	Concordia Choir entertains.
Wed. 13th May	10-4pm	Coach trip to the National Memorial Arboretum (open to non-members)
Wed. 20th May	1.30-4.30pm	Visit to Roberts Bakery (open to non-members)
Wed. 27th May	2-4pm	Card Bingo
Wed. 10th June	2-4pm	Ann Entwistle: "Parenting needn't end when a partnership does."
Wed. 24th June	2-4pm	Brian Lloyd: "Now there's a funny thing!"
Mon. 6th July	2pm	Members and guests' afternoon at The Paddock.
Wed. 22nd July	2-4pm	Delamere Derby
Wed. 2nd Sept.	2-4pm	Gloria and Robin: "The Adventures of Charity Workers in Romania".
Wed. 16th Sept.	1-4pm	Birthday Lunch with musical entertainment by Stephen Lucas.
Wed. 30th Sept.	2-4pm	Harvest Service (at the Community Centre) with Rev.Elaine. Please bring produce for the sales table.

Visitors with a view to membership are welcome. Further details from Gloria or Robin: 01829 752723

W.I.

Date	Speaker	Title	Competition
April 14 th		Becky on a Christian Aid project in Ethiopia	A game from the past
May 12 th	Members	Resolutions and Mini Show	
June 9 th	Dianne Hall	Alpacas	
July 14 th	Andrew Wright	John O'Groats to Lands End - a classic bicycle journey	An interesting postcard
September 8 th	Fiona Barry	China challenge	
October 13 th	Tom Jones	Dark happenings in Chester - inexplicable and ghostly events!	Group competition to be announced
November 10 th		Annual meeting	
December 8 th		Christmas party	Home made Christmas table decoration

President: Lorraine Roberts 889188, Secretary: Mrs S Goodwin 888921, Treasurer: Mrs C Green 882264. Meetings are held at 7.30pm, every second Tuesday in the month except for August, at Delamere Community Centre

the Good Garage Scheme  'Approved Dealer' with a 100% customer rating

 **NickTomlinCars**
www.nicktomlincars.co.uk 

YOUR ONE STOP SERVICE CENTRE

Specialists in ALL SERVICING AND REPAIRS

Our Tyre Centre is NOW OPEN

We are now able to supply & fit your tyres - Call for a competitive quote



MOTs

Free pick ups & drop off service or courtesy car

Servicing from £89^{+VAT}

Our service does not invalidate your manufacturer warranty

- TYRES • EXHAUSTS
- CLUTCHES • BATTERIES
- BRAKES • DIAGNOSTICS
- RECOVERY SERVICE

Every service customer will be entered into a **GRAND DRAW** and the winner will receive the cost of their service or repair bill

Win your bill back!
WHEN YOU BOOK A SERVICE OR REPAIR AT NTC!



Facebook Follow us on facebook for our latest offers

Chester Road, Delamere
Nr. Northwich CW8 2HB

Tel 01606 889494
Monday to Friday - 9am - 5.30pm. Saturday - 9am - 1pm



Club Class
24-7 Cheshire Taxi
01606 46666

Your number one choice for:

- Shopping Trips
- Nights Out
- Airport Transfers (single & returns)
- Executive Travel (on request)
- Wheelchair Transport
- Account & Corporate Bookings
- School Runs
- 4, 5, 6, 7 & 8 Seat Vehicles
- Special Events
- Train, Boat & Coach Rendezvous

We are Always Open
 & Always Happy To Help









*Motorcycles, Scooters, Trykes, Quads
 Cars, Vans and Three Wheel Cars*

*MOTs, Tyres, Servicing, Repairs, Air
 Conditioning, Diagnostics*

Collection from local area

Opening Hours:

8.30 am – 5.30 pm Monday to Friday

8.00 am – 1.00 pm Saturday (MOTs only)

Tel: 01606 882219

Fax: 01606 881700

Email: spanns.garage@zen.co.uk

www.spannsgarage.co.uk

Dalefords Lane

Whitegate

CW8 2BW




- 💧 **FREE ESTIMATES**
- 💧 **BATHROOM INSTALLATION**
- 💧 **KITCHEN INSTALLATION**
- 💧 **FLOOR AND WALL TILING**
- 💧 **MOBILITY SOLUTIONS**
- 💧 **ALL AREAS COVERED**



www.mackaysplumbing.co.uk

info@mackaysplumbing.co.uk

 Mackays Plumbing

 @mackaysplumbing



Office: 01829 759 006 Mobile: 07974 668 315 Free: 0800 5422 136

Foreword

The photographs in this issue have something of an animal theme, with the stunning picture on the cover of a fox in the snow in Barry and Thelma Jones's garden, plus an article on Brian Merry and Ann King's prize pigs, and another on February's horse trials at Kelsall Hill. Kelsall Hill have also given us an advert for their next event, which looks like being a good day out, within walking distance for many of us. A big thank-you to all of you who provided the pictures. Please keep sending them in!



That fox again (photo by Barry Jones)

This time we have devoted quite a lot of space to the imminent demise of Delamere and Oakmere as separate parishes, their imminent re-birth as a single one, and the coming-of-age of Willington as a parish with its own parish council. To celebrate the past some of our retired and longest serving councillors share their memories, while to herald the future we have an article on what is involved in being a parish councillor and how to stand for election.

Many more memories were shared by those of you who were at the Golden Club gathering on Remembrance Sunday. Gloria Ackerley has recorded these for us in another article. We are also delighted to have two more poems in the poetry corner, and for those of you with a little time to spare, a word-search as well another crossword.

This will be the last issue of the newsletter before the boundaries change, which means saying goodbye to those of you who are moving

to Kelsall or Utkinton, and possibly also to those of you in Willington. Should D&O News continue to be distributed in Willington? If so, should it keep its present title, or become DO&W News. Or maybe something else? Or should it restrict itself to the new civil parish of D&O? The answers will depend on what the two new parish councils have to say, but they are likely to want to know what residents/readers think. If you would like to express a view, send an email to the editor and we will pass it on.

About the newsletter

Delamere and Oakmere News is published three times a year, with the next issue due in the summer. Articles, ideas for articles, news of recent events or forthcoming ones, advertisements, photographs, and any other contributions relevant to Delamere and/or Oakmere are all very welcome (inclusion subject to editorial discretion).

The newsletter is available in **full colour** on the Delamere and Oakmere Community website. You can also get a PDF file of the colour version by email (contact us if you would like a copy).

do_newseditor@yahoo.co.uk
or ring Clive George on 01606 882183

Contributions always welcome!



Delamere's answer to Calendar Girls -
the WI at Roberts' Bakery
(photo Cynthia Green)

Answers to this issue's crossword

Across: 1, 5. Delamere Stores, 10. Canon, 11. Stronturn, 12. Roadhouse, 13. Reeve, 14. Stasis, 15. Treacle, 18. Garnets, 20. Ambles, 22. Optic, 24. Embattled, 25. Levitator, 26. Laird, 27. Relish, 28. Banshees
Down: 1. Decore, 2. Lancaster, 3. Manchester City's, 4. Rescues, 6. Ten green bottles, 7. Rhine, 8. Summured, 9. Ardent, 16. Cleo Laine, 17. Ignobler, 19. Stents, 20. Alberta, 21. Adidas, 23. Tavel

Letter from the Rector

March 2015

Dear Friends

200 years ago in 1815 the people of Great Britain were living in dark times; the country was at war with France. Everything depended on the Duke of Wellington as he set sail with his army to confront the Emperor Napoleon. It seemed that the whole country waited with baited breath for the news of the battle. The news would be brought to England by a system of signal ships and lookout towers and the main lookout point was the roof of Winchester Cathedral. From there the message would be carried to London. Sometime after June 18th 1815, the watchman on the top of the cathedral saw a signal ship. It was a very foggy day but it was just possible to see the message 'Wellington defeated' and then the fog swirled and the ship could no longer be seen. The worst possible news, the depressing facts began to spread across the country passed from signal tower to signal tower. But after a few hours, the fog lifted and the message continued not 'Wellington defeated' but 'Wellington defeated the enemy'.

The message of the first Good Friday seems to be Jesus defeated, and that was the depressing news that spread out from Jerusalem, but on the first Easter Day the real message was seen to be the reverse – not Jesus defeated – but Jesus defeated the grave!

Jesus the light of the world comes into the dark places of our lives, he comes to us when we are in doubt or frightened, he comes and he doesn't shout at us or blame us or tell us we should be doing better, he comes and says 'Peace to you'. (John 20: 19 – 21)

We warmly invite you to worship with us at St Peter's, each Sunday there are services at 8am and 10.30am. On the 2nd Sunday of each month at 10.30am, we have a service for all the family. On Good Friday there will be a service of Morning Worship at 10.30am followed by coffee and hot cross buns at The Rectory. On Easter Day there will be an Easter Egg hunt for the children from 10am with a service of Holy Communion for all the family at 10.30am.

Do contact me by telephone or email if you would like me to visit or pray for you.

Brian joins me in sending good wishes and blessings

Revd Elaine
The Rectory
Chester Road
Delamere, CW8 2HS

Community Centre News

Quiz night

The next Quiz Night is on June 5th, organised by the Thursday badminton section. See the advert for details.

Coffee Mornings

Coffee mornings continue to be held on the last Friday of every month, between 10am and 12 noon. All are welcome. All money made is for the Community Centre.

An important date for your diary!

The Annual General Meeting will be held on Monday July 6th at 7:30 pm. **All DCA members please try to attend.**

Management Committee

Albert Powell, Acting Chairperson; Steve Lacey, Treasurer; Evelyn Macpherson, Assistant Treasurer; Pat Wheeler, Secretary/Booking Secretary (01606 883631).



The Keep Fit Club getting fit
(photo Carol Chadwick)

Parish Council news

Delamere Parish Council Chairman's Letter

Much of the Parish Council's time over the past few months has been devoted to the imminent amalgamation of Delamere and Oakmere, and the parallel creation of a new council for Willington. Most of the administrative arrangements have now been made, and all the current parish councillors will continue to serve on one or other of the groups that will deal with any urgent matters between the dissolution of the old councils on 31st March and the election of the new ones on 7th May. **See the separate article on how to stand for election and what is expected of councillors.**



Delamere Community Centre
5 Station Road. Delamere CW8 2HU

"Quiz Night"

on

Friday 5th June

Doors open 7.15- Quiz starts at 7.45

Quiz Master Steve Lacey

Tickets are £4 per person

Includes quiz, tea, coffee, squash and nibbles. Please bring your own alcoholic (or preferred non-alcoholic!) drinks/glasses if you prefer.

Quiz teams of between 4-6 people; if there are not 4 of you please do come along as you can still be part of a team.

Prizes for the winning team, Raffle.

Further information can be obtained from:

Steve Lacey, 01270 780777

email: steve@slamonline.co.uk



Church Garden Party

at

The Rectory

Saturday 4th July

2.00pm

**Children's Fancy Dress
Competition**

Afternoon Teas

Stalls - Games - Raffle

Put the date in your diary NOW!

Church Coffee Morning and Plant Sale

at

The Rectory

Saturday 9th May

10am until 12 noon

**Come and enjoy a coffee with
home-made cake and scone
and choose your plants at
leisure**

Put the date in your diary NOW!

There is always something to do here at Blakemere. We have organised events as well as daily activities running all year round!



Car Boot Sales

Starting March & run until October
Last Sunday in the month
8am-2pm £5 per car
No traders, plants, food or new goods



Good Friday 3rd & Saturday 11th & 18th April

Get creative with The Creation Station this Easter

- Easter Cards - Create unique Easter cards
- Easter Cone Bag - Make an Easter themed bag!
- Bunny Ears Hat - Create a hat to wear at Easter

Fun activities for children aged 2 years to 11 years & their grown ups.

Each Creative Station craft - £4 per child. No need to book, just turn up!



Good Friday 3rd April

Hold cute Easter chicks and fluffy bunnies for free in the fountain area along with fun Easter facepainting - from £1.50

Easter Bunny Trail

Friday 3rd - Sunday 19th April - Just £1 per trail form
Fun trail to find the bunches of carrots hidden around Blakemere & a chocolate treat for every child



Bank Holiday Monday 4th May

11am-4pm. Come along and meet our antique and collectable experts, find out the history of your treasures & have them valued.

FREE entry - FREE advice - FREE valuations



Car Rallys

Sun 14th June - Tameside Car Collectors Rally

Sun 6th Sept - Triumph Dolomite Club Rally

Blakemere
Est. 1994 **Village**

Open 7 days a week 10am - 5pm
www.visitblakemere.co.uk

Sandiway, Northwich, Cheshire CW8 2EB 01606 883261

There have been no major new planning applications since the last issue, and we still await the outcome of the proposal for holiday lodges and a new visitor centre in the forest. The Secretary of State accepted the recommendation of the inquiry's planning inspector, that the proposal be refused on the grounds that it did not warrant development in the Green Belt. However, the Forestry Commission have lodged a legal challenge, and the final decision is unlikely to be known before December.

Delamere Parish Council is now the proud owner of the telephone box at Willington Corner! The telephone had only been used three times in the past year, so BT planned to remove it, unless we wanted to buy it for the princely sum of £1. It was offered to us as part of BT's 'Adopt a Kiosk' scheme, through which over 2300 communities have converted old boxes to such uses as local information centres, libraries, mini-grocery shops or ice-cream shops, art galleries or defibrillator centres. The future Willington Parish Council will inherit the box - along with the headache of deciding what to do with it!

The call for new Home Watch coordinators that we put out in the last issue produced no response at all! In a way this is good news, as it suggests that residents feel more secure than they did when the scheme was introduced. We also have the benefit of our new Police Community Support Officer, who keeps an eye on things and can respond promptly to any concerns. The council has therefore decided to discontinue the Home Watch scheme.

One of the parish council's last decisions, taken jointly with Oakmere Parish Council, has been to recommend the size of the 'precept' for the new council - the money charged to residents through their Council Tax. Since Oakmere's precept has in the past been higher than Delamere's there was a danger that Delamere's would have to rise. It was decided to keep the precept unchanged for Delamere residents, with a bigger reduction for Oakmere's, which is likely to result in a small loss for the new council's first year. This will be borne out of the reserves. However, Delamere households will still have to pay about nine pounds a year more, since they will have to contribute to the 'special expenses levy' that CW&C charges for managing the children's playground at Mere Crescent.

Some of you may see this as an unnecessary burden. Others, I hope, will see it as a small price to pay for beginning to build a new community spirit across the whole new parish of Delamere and Oakmere. There is a lot that we can do together much more easily than we could ever do apart. The same applies to the newly expanded Willington. Those of us in Delamere will be sad to see you go, but I'm sure the two new parishes will continue to work together closely, and we wish the new council great success.

Clive George
Chair, Delamere Parish Council

Oakmere Parish Council Chairman's Letter

Hello again, this is Bill McGibbon chair of Oakmere Parish Council.

Following the Community Governance Review, by Cheshire West and Chester Council, Oakmere Parish Council will be 'amalgamated' with Delamere Parish Council to form a single parish council with two Wards, the Wards being called Oakmere and Delamere. This amalgamation will take place in 2015, with the existing parish councils ceasing to exist on the 31st March 2015 and the new Delamere & Oakmere Parish Council being established a few days after the General, Borough Council and Town/Parish Council Elections on the 7th May 2015. Between the 1st April and the inaugural meeting of the new parish council, 'Transition Arrangements' will be in place, in case of any urgent business, within the new parish.

If you are interested in becoming a prospective candidate for the new Delamere & Oakmere Parish Council, see the separate article on what parish councils do.

This is the first summer that the Oakmere Way has been open and it is proving very popular with walkers, horse riders and cyclists. Residents on Stonyford Lane have been experiencing problems with vehicles parking on the soft verges, close to the entrance of Oakmere Way. The Mid Cheshire Bridleways Association, supported by OPC, is looking at the possibility of a small car park, to accommodate the users of Oakmere Way's vehicles.

The planning application for the Forestry Commission redevelopment of the Linmere visitors centre and Delamere Forest Lodges development was approved by CWaC, but this decision was overturned by the Secretary of

State, who referred the planning application to a public enquiry. The inspector in charge of the enquiry delivered her decision in November 2014 to refuse the application. This would leave the Forestry Commission without a much needed additional income stream and presumably, no resources with which to upgrade the Visitor Centre! They have appealed against the decision.

The opportunity has arisen for parish councils and other organisations to identify assets on a register that are of significant value to the community via a Community Right to Bid scheme. If the asset is put up for sale, notification will be given of the sale, so that the community can make a bid. Market forces determine prices, so there is no bias. OPC have identified four pieces of land that are considered to be of significant community value and these are being considered by CWaC, who will make a decision on whether they meet the criteria to be placed on the register.

The deployment of Superfast Broadband has now been available on Station Road in Delamere for several months, but remains tantalisingly unavailable for parts of Oakmere, even though we are on the same Sandiway exchange. Efforts to discover why have proved fruitless so far. Further announcements can be found on the website, www.connectingcheshire.org.uk.

As OPC will cease to exist from April 2015, this is the last 'Chairman's Letter' for this Council. It is sad in some ways, to witness the passing of an organisation that has been serving the community for over a hundred years. Many faces have come and gone and it is hoped that the Council has improved the lot of the parishioners of Oakmere during its lifetime. 'Oakmere Parish Council is dead, long live Delamere & Oakmere Parish Council'!

Bill McGibbon
Chair, Oakmere Parish Council

New parishes, new parish councils

At the end of March both our parish councils will be dissolved, and two new ones will be created, one for Willington, and the other for the newly amalgamated parish of Delamere and Oakmere. Elections for the new parish councils will take place at the same time as the General Election on 7th May (along with elections for Cheshire West and Chester Council). Do you know anyone who could do a first rate job as a

parish councillor? Nominate them. Or how about standing for election yourself? Why not? Willington needs five councillors and Delamere and Oakmere needs twelve, six for each of its Delamere and Oakmere wards.

Hard work? It's up to you.

The work of a parish councillor is totally voluntary, and roughly as long as the proverbial piece of string. As a minimum, councillors are expected to attend monthly parish council meetings and contribute to whatever decisions are made on behalf of the local community. Beyond that it is up to the individual councillor, depending on how much time they can spare, how much energy they have got, and how determined they are to achieve some particular goal for the local community. This newsletter is itself an example of that (thanks to its first editor and the ongoing support of both councils), as are the community website (a joint initiative between the councils and the Community Association) and the new footpath and bridleway along the Oakmere Way (created by Mid-Cheshire Bridleways, supported by the councils). Many other initiatives have been led by individual parish councillors, and hardly a week goes by without one of them taking up an issue raised by particular residents, such as getting a pothole mended, getting a leaking sewer fixed, or having a quiet word with residents who have annoyed their neighbours.

Decisions, decisions

One of the most common decisions parish councils have to make is whether to support or oppose a planning application, such as for new developments in the forest, a new housing estate, or changes to an individual house. They have no direct power over these, but can make sure that those responsible are aware of local issues and concerns, and can sometimes be quite influential. Most council meetings are attended by one or both of our CW&C ward councillors, giving parish councillors the opportunity to discuss the issues with them face-to-face. The same applies to officials responsible for highways and other local matters, who also attend council meetings regularly.

Other key decisions include defining and managing any services provided by the parish council itself, and collecting the necessary money through the council tax (the 'precept'). Such services can include providing allotments, car parks, community transport schemes, community safety and crime reduction

**** NEW ****



- **Wrinkle reducing injections – e.g. crows feet, frown lines, forehead lines, ‘smokers’ lines etc.**
- **Dermal fillers**
- **Tooth Whitening**
- **Lip augmentation**
- **Anti Hyperhidrosis (excessive sweat reduction)**

Dr Woodside is a qualified dentist and member of the Royal College of Surgeons Edinburgh, working in local salons as well as mobile around the North West.

***** introductory offers available *****

Please call to book:

Dr Lucy Woodside 07860477641

Or email:

drwoodsidefacialaesthetics@gmail.com

EMBRACE PSYCHOLOGICAL SERVICES

Embracing Life...Hope...Change



The British
Psychological Society
Promoting excellence in psychology

hcpc health & care
professions
council

www.embrace-psych.co.uk

We offer quality Clinical Psychology and Psychotherapy services from a HCPC-Registered and BPS Chartered clinical psychologist and ACAT-accredited practitioner in Cognitive Analytic Therapy.

We specialise in the assessment and treatment of individuals with a range of psychological difficulties including:

Stress
Anxiety, panic attacks and phobias
Depression
Poor confidence and low self-esteem
Loss and bereavement
Relationship difficulties
Interpersonal and personality difficulties
Trauma and abuse

We also specialise in working with people who experience ***chronic pain*** and ***chronic fatigue***.



Weaver Business Centre, Winnington Ave, Winnington CW8 4EE

Tel: 0780 175 6808

E: contact@embrace-psych.co.uk

measures, events and festivals, leisure and sports facilities, public toilets, street cleaning, traffic calming measures, village greens and youth projects. Both Delamere and Oakmere have in the past provided relatively few such services, and have kept their precepts well below the national average. The two new councils could do more, and charge more, if they were to decide there is a need for more.

A development plan for Delamere and Oakmere?

With considerable assistance from local volunteers, both of the current parish councils have taken the first steps towards creating a development plan for the area, through Oakmere's Planning Framework and Delamere's Parish Plan. Kelsall is now in the process of developing a more comprehensive Neighbourhood Development Plan, which is expected to include Willington. This type of plan has the advantage of being a formal part of the local planning system, giving parish councils greater control over what kind of developments take place within the parish, and where. The possible development such a plan will be a key decision for the new parish council. If you have some imaginative ideas, and the energy to push them through, join the council!

Nominations

A nomination pack for the forthcoming election can be downloaded from the CW&C website:

<http://electionswestcheshire.co.uk/town-and-parish>

Nominees must be at least 18 by April 9th and be a British citizen, a Commonwealth citizen, or a citizen of another EU country. They must either: be registered as an elector for the parish; or have lived in the parish or within 3 miles of it for a year; or have worked in the parish for a year; or have occupied land or premises in the parish for a year. Nominations must be delivered by hand to the Council offices in Chester or Wyvern House in Winsford between Monday 23rd March and 4pm on Thursday 9th April.

Delamere Parish Plan update

New bird boxes

Four owl boxes and half a dozen smaller bird boxes are either up or on their way up in public spaces around Delamere, including the green on

Station Road and the woodland on Eddisbury Hill. Keep an eye open for the first occupants.

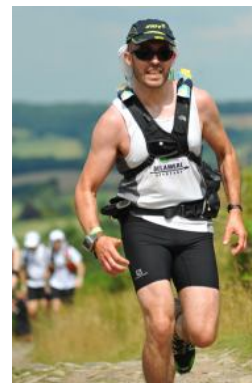
Ready, steady, sow!



Our application to Royal Botanic Gardens for free wild flower seed kits has been successful, and we expect to receive them around the end of March. Each kit has a getting-started guide, five seed packets, site markers, and a DIY bee house. Would you like to help with the sowing? Contact Barry Green (01606 882264) or Clive George (01606 882183).

Run 10 km in the forest! (or just watch)

Delamere Spartans are proud to announce their inaugural 10 km trail race in Delamere Forest on bank holiday Monday, 4th May. The Spartans are a group of hardy trail runners who run in Delamere forest, and who have, until now, gone elsewhere for competitive events. The May event will be round the part of the forest to the north of Ashton Road, starting and finishing at Manley Spring Fair.



Those of us who use the D&O website are indebted to one of the keenest of the Spartans, James Hack, whose company DX Digital developed the website for us free of charge.

For more information on the 4th May run see <http://www.delamerespartans.org.uk/spartan-blog/ten-thousand>

For more information on DX Digital go to <http://www.dxdigital.co.uk/>



Kona Blast £799



Raleigh Vermont £220

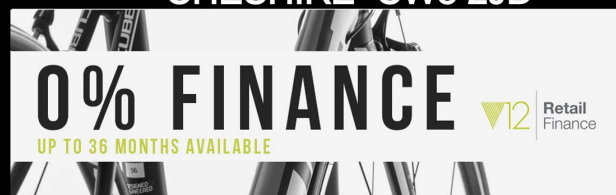


Kiddi Moto Balance Bikes
£69.99-£99.99



Delamere Forest Bike Shop

LINMERE VISITOR CENTRE
DELAMERE FOREST
CHESHIRE CW8 2JD



QUALITY BIKE HIRE

BIKE SERVICING

BIKE REPAIRS



Open Every Day 10am-6pm

www.tracs-uk.co.uk ■ Email: info@tracs-uk.co.uk

Tel: 01606 881802

Golden Club

Coach Trip!

If you would like a place on the Golden Club coach to the National Memorial Arboretum, Staffordshire on 13th May, please contact Gloria or Robin 01829 752723, as soon as possible. Seats £7-£12 depending on the size of coach. Families welcome.

Visit to Roberts Bakery

If you were unable to go with the WI on their visit in March to Roberts Bakery, Northwich, then consider going with the Golden Club on 20th May. Visitors need to be in a group. Own transport please or lifts may be available. Contact Gloria or Robin 01829 752723.

Carol Singers!

A huge thank you to all the carol singers, who turned out on Christmas Eve morning outside Delamere Stores. Thank you to all those people and customers who joined in, including our faithful teenage family who turn up especially each year, and Councillor John Leather, who made his debut and helped to swell the ranks



still further. Thank you to Lee Cartwright and Joe Wilding for plying us with Christmas fare to keep us going and to Lee for his generous donation. Thank you to all the contributions from singers and customers. We were able to donate £36 to St.Peter's Church, £36 to Oakmere Methodist Church and £36 to the Community Centre. Hope to see you next time!

Gloria

Golden Club Remembrance Meeting 11th November 2014

Gloria Ackerley

As one of our Wednesday afternoon meetings fell on Remembrance Day, we decided to exchange personal war time stories of the area

and beyond. We had a display table with memorabilia such as medals, items of uniform, letters, photographs and montages. Peter Powell, Chairman of the Delamere Branch of the British Legion, was invited and visitors also brought their stories.



Margaret Harrison brought a montage depicting the remarkable achievements of her grandfather L/CPL Richard Stead. Serving in the Lancashire Fusiliers, he fought in Egypt and the Sudan from 1882-1899 and took part in the South African War from 1899-1902. He fought in the Boer War and was at Spion Kop 23rd-24th January 1900. He was also at Ladysmith. During the Great War 1914-1918, Margaret's grandfather served in the Manchester Regiment. He fought at Gallipoli from 6th May 'till 30th December 1915. He also fought at the Suez Canal 15th January 'till 31st July. He was at the battle of Romani, fighting the Turks at Katia. In January 1917 he fought from Sinai to El-Arish and in February was at Kantar. Records dated March 1917 also show him fighting in France and Flanders. Richard Stead went on to live until he was seventy-five. He died in 1945.

Ann Entwistle spoke of her husband Tony's two uncles: William Entwistle, who was in the Canadian Regiment and killed in Belgium during WW1 and Richard Hughes, Tony's mother's only brother, who was in the Merchant Navy and shipwrecked off the coast of Scotland. There were no survivors.

Betty Spark told us that the names of family members were inscribed at The National Memorial Arboretum in Staffordshire. One family member, Flight Lt Charles Perry from Lichfield, was one of the youngest pilots to die in WW1. He was shot down overseas and was buried in Malta. Aged nineteen when he died he had been the only mechanic in the village when he enlisted. Betty brought photos of the Dam Busters' dam and the bombing. Betty lived near Coventry. She was a patient in a Birmingham hospital when war broke out. All

the children were evacuated, and she was returned home. She remembered sitting on a pig sty wall and seeing pilots fly low, a red glow in the sky as they dropped their bombs on the village to lighten their load. Betty then spoke again of the Arboretum and the memorial to deserters who were shot at dawn. They are remembered by poppies which grow where they have never grown before.

Barbara Bettley spoke of her childhood. She was seven years old at the beginning of WW2. She remembered the sirens sounding in Cotebrook. She remembered her mum swearing at Hitler. Other memories were of a knitted Pixie Hood, Girl Guides collecting waste paper to be put in the sheds at Spiegelbergs where the double sirens deafened everybody nearby. Rosehips were collected to make rosehip syrup. Barbara also remembers National Savings, oil lamps and the radio, gas masks and the ARP (Air Raid Patrol) bells, and the warning 'Put out that light!'.

Margaret White had been in the ATS (Army Transport Service) and had driven in convoys as an eighteen year-old. She trained in Halifax at the Duke of Wellington Barracks and from there went on to London then to Wiltshire. She remembers falling down at a station with her heavy kit. She went on to serve in Wales and then in Manchester at Davyhulme Military Hospital. She remembers Rainford near St.Helen's where young women were preparing tanks for D-Day. Margaret was in charge of a sick bay and tended an assortment of wounds, such as dressing fingers trapped in a gun turret. She met her husband Jim in the army and lived in married quarters. Margaret was demobbed in 1946 and in 1948 Jim returned from India to continue his army career.

Thelma Ashbrook spoke about her son, Phil, having died as a consequence of undertaking secret missions while serving in the army. Her daughter-in-law had been to the Arboretum, where the Golden Club are going in May (see separate notice). She remembered her own wartime childhood, when her father had been an Air Raid Warden. She remembered the dugout bomb shelter in Northwich, and the bomb which fell nearby. Her father-in-law had been in the fire service at that time. Thelma also remembered the prisoners of war at the camp at Marbury. There was a special curfew for them. Her dad brought one home and he had served the family tea. They thought him such a nice

man – quite different from the Germans they had learnt to hate.

Carol Chadwick brought along poignant memories of her father William Dooley, who died, aged only twenty-two, serving in the Merchant Navy on the Ocean Venture as he brought over supplies from Vancouver. It was sunk by U 108, called the Klaus Scholtz. His body was never found and Carol's mother had to wait seven years before he was officially declared dead. We saw a photo of him in uniform and the letter of condolence from King George VI.

Peter Powell mentioned that Denis Gore of Frith Avenue had been a prisoner of war. He had taken part in Operation Market Garden at Arnhem. He added that Cliff Edwards, formerly of Frith Avenue, had taken part in the Russian convoys. As a prisoner he had lived on turnips. He had been a standard bearer for the British Legion on Remembrance Sundays. Peter's uncle, Joe Gregory, for many years a member of Delamere church choir, had fought in WW1 and lost three fingers. He had joined the army under-age at fifteen. Peter Powell, himself, had served in the Coldstream Guards.

At the beginning of WW1 three Robinson brothers who worked at the Old Pale Farm made a pact with other young men from the village to enlist. Of the three only Tom, the youngest and actually underage when he enlisted, returned alive.

Robin regretted that his grandfather's WW1 records were destroyed along with many records of the Great War during the London blitz of WW2. His Black Watch kilt had been made into a coat. He had brought along to the meeting his grandfather's Black Watch beret and service medals. He then spoke of his father being the Air Raid Warden for Delamere, with the air raid shelter at the school. Robin spoke of the decoy lights on the Old Pale and how some five hundred incendiary bombs had fallen on the big field behind the school during one memorable night, when the bombers were returning from raids on the Liverpool docks.

Charles Ashbrook was killed by enemy action when the cottages at the top of Stoney Lane were bombed. The Paddock was built on the bomb site where village youngsters used to play in the crater. Charles is remembered in St.Peter's Church together with local people who gave their lives on active service.



Kelsall Hill British Eventing

**24th to
26th April 2015
10am**



Come and see top riders from all over the country!

- Dressage • Show Jumping
- Cross Country



**Face
Painting
(Sat/Sun)**

**Refreshment
Stands**



**Equestrian
Trade Stands**

Over 30 trade stands!

Parking just £5 per car



Kelsall Hill Equestrian Centre

Organsdale Farm • Middlewich Road • Kelsall • Tarporley • Cheshire CW6 0SR

Tel: 07809 689972 • Email: admin@kelsallhill.co.uk

www.kelsallhill.co.uk

Irene Bonser told us how she had been in the Land Army in Cambridgeshire. This was where she was sent as 'they' found out she liked gardening! She remembers hiding under the stairs during the war and her father coming home safe. As a 'Land Girl' she was put up in a hostel with twelve other girls, working with pigs, chickens and twenty cows, which she learnt to milk sitting on a little stool. The farmer thought if Irene sang to the cows she would get more milk for the farm! Irene would get up at 6am for the milking and wash the udders by hand. She would also have to clean out the sheds. She told us she really enjoyed it all.

I brought along a flimsy May 1945 British Forces Daily (Central Italy Edition, 2 lire, 'The Union Jack' - a special edition announcing the final defeat of the Germans. My dad Bob Alden had been a survivor from Dunkirk. He went on to the Italian Campaign and the fierce last stand of the Germans along the Gothic Line. The German prisoners of war recuperated sunbathing on the beach at Rimini, waiting to be sent home. When dad and my Italian mum Renata got married in Rimini, some of the prisoners melted down some silver and made them a little horse shoe. So as a consequence of the war my twin brother Adrian (named after the Adriatic) and I were born. I still visit my mum's sister Rafaella in Rimini every summer.

Eventing at Kelsall Hill

The Kelsall Hill equestrian centre (at Organsdale in Delamere) has been going from strength to strength. In February it hosted one of the qualifying rounds for the British Eventing (BE) Arena Eventing final.

It was a good day at the office for Camilla Hardie, who registered a double win, in the BE100 and novice sections, riding Beau Jangles.



Camilla Hardie and Beau Jangles

Claiming victory in the BE80 section was Jane Byrne riding Kennystown Lucky. Jane and Lucky have now taken the lead on the Chestnut Horse Feeds BE80 leader board.



Jane Byrne and Kennystown Lucky

A second win in the in the BE90 section was clinched by 14-year-old Tarporley High School pupil Lucy Hassall, riding Starlight Clara. The win put her at the top of the BE90 table.



Lucy Hassall and Starlight Clara

Overall it was another wonderful event, with an even larger field of competitors and great weather.

*Photos courtesy thefotografer
(www.thefotografer.co.uk)*



Elizabeth Ackerley
Made in Tarporley



For locally designed & made personalised, embroidered gifts for all occasions and ages. I also teach sewing workshops at The Craft Room - Tarporley . Private lessons are also available.



www.elizabethackerley.co.uk
hello@elizabethackerley.co.uk
Tel: 07752 303143



Embroidered Gifts, Textile Art & Sewing Lessons



Oakmere Cricket Club



Oakmere CC have Senior Mens, Juniors and Ladies teams playing over the weekend and mid-week matches and Qualified Coaches provide structured training sessions across all teams.

This season's outdoor training will commence as per below with Matches starting in mid-April:

- **Senior Nets:** Tuesday 31st March 6.30pm
- **Junior Nets:** Wednesday 8th April
(Under 11's from 6pm – 7pm / Under 13's & 15's from 7pm – 8pm)
- **Ladies Nets:** Monday 30th March 6.30pm

New Players and Spectators are always more than welcome!

If you are interested in playing cricket or want to find out more about the Club please contact secretary@oakmerecc.co.uk for more details or visit our website at www.oakmerecc.co.uk

Location: Overdale Lane, Oakmere, Northwich CW8 2EL



The TACS Partnership
Cheshire Cricket League

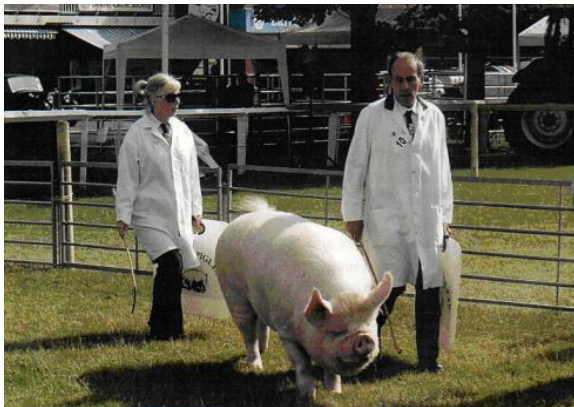


Cheshire Womens Cricket League



More Delamere champions

The article in the last issue about Thomas Hassall's prize-winning herd of cows prompted this one about other local champions of animal husbandry, Brian Merry and Ann King of Pinehurst in Station Road. Their pigs have been winning prizes for nearly ten years. As well as breeding and showing pigs, Brian has himself been appointed by the British Pig Association as a Traditional Breeds judge. Of all the pigs he and Ann have reared, the best has got to be Dickie Mint, who was Interbreed Champion at the Stafford County Show (top in its class of special Middle Whites and top in all classes of pig), and then Interbreed Champion at the Lincolnshire Show.



Ann and Brian showing Supreme Champion Dickie Mint

With his show days now over Dickie Mint has gone to Ireland as a breeding boar, with two acres to roam around, and six females for company.



Winning the Triples at the Anglesey Show

Not all of Brian and Ann's piglets get to be that lucky. Most end up on the dinner table, and usually quite a refined one. The Middle White was once among the most popular breeds in the country (the 'London porker'), but got elbowed

aside when government policy pushed pig production into bacon in response to growing imports from Denmark. The 1990s saw a revival of demand among high quality catering establishments for pork with excellent flavour and texture, and the Middle White has come back into favour. Most of Brian and Ann's pigs go to Pugh's Piglets of Garstang, who supply a whole host of renowned restaurants, hotels and caterers in Britain and overseas, many of whom have served one of their piglets to the rich, famous, and even royal.



Out and about at Pinehurst

Quite a few of the rich and famous breed traditional pigs themselves, including the Marquess of Salisbury, actress Liz Hurley and TV chef Anthony Worrall Thompson. Brian and Ann have rubbed shoulders with most of them. When one of their prize pigs, Fred, qualified for the Young Pig of the Year final at Hatfield House they had a great time having drinks with Lord and Lady Salisbury before being taken on a tour of the house, and in the evening going to a medieval banquet in the Old Palace - with the Marquess's home-reared pork heading the menu. The Marquess, who is President of the British Pig Association, has also held the posts of Lord Privy Seal and Leader of the House of Lords. According to an interview he gave to the Financial Times, he regards rearing pigs as harder than politics.



These little piggies stayed at home

Council of the Year awards

Congratulations to Cheshire West and Chester Council! It has been named as runner-up in the Local Government Chronicle's 2015 'Council of the Year' award. Entries were judged on councils' success in combining significant public service improvement and reform with budget cuts and efficiency savings, in community engagement, in addressing key challenges, and in their ability to offer learning to other councils.

CW&C also won the LGC's Environment Award, for its Waste Collection Team's student communications campaign, which aimed to improve students' attitudes to waste and recycling.



**Extending or remodelling your home?
Looking for the best use of space?
Want fresh ideas with designer flair?**

- **Planning Applications**
- **Building Regulations**
- **3D Visualisations**
- **New build designs**
- **Renovation & Conversion**

Nicola Gibson
nicola@njgdesign.co.uk
 07813 034552 / 01606 301171
 Dairy House Farm, Oakmere



- ✂ TRADITIONAL BRUSH AND VACUUM SERVICE
- ✂ NESTS REMOVED ✂ CAGES, CAPS AND
- COWLS FITTED ✂ SWEEPING CERTIFICATES
- ISSUED ✂ PROFESSIONAL, CLEAN SERVICE
- ✂ FULLY INSURED ✂ POLICE CHECKED
- ✂ CARD PAYMENT ACCEPTED



CHIMNEY SWEEPING SERVICE

Call John on 01928 897 294

Memories of Parish Councils past

The amalgamation of Delamere and Oakmere parish councils represents a new chapter in over 200 years of history. When the parish of Delamere was created in 1812, Oakmere was one of its four 'townships', with no distinction between the civil parish and the ecclesiastical one. Delamere and Oakmere became separate civil parishes in 1866, governed by parish meetings or 'vestries'. In 1894 vestries were abolished throughout the country and replaced by parish councils. Delamere and Oakmere have each had a parish council ever since, until now. To mark the occasion we have asked some of our retired and longest serving councillors to share their memories.

Delamere

Pat Wheeler

When I was on the PC in the 70's (!!!) the clerk was a lovely man called Tom Ashbrook, who lived by Delamere School. When he came into the meetings all he had was a large ledger, a couple of pens and some spare paper to make notes. Everything was hand written. Plans had to be sent for by post and discussed when he had received them. He didn't have a telephone of his own, so to contact any member he walked to the telephone box by the school and rang people from there. The PC still met its requirements with little fuss, and the meetings were very enjoyable. There are many times when I wish that way of life was back.

Dave Goodwin

During my time on the Council in the 1980s one of my tasks was to be the 'footpaths officer', walking them every year and reporting any problems to the Mid-Cheshire Footpaths Society. Another of our frequent walkers, Robert 'Chippy' Wood, had way markers installed along the Sandstone Trail.

Other energetic councillors in my day included Roy Penk, who helped to plant daffodils in the field alongside Frith Avenue. It had been a waste tip until we got it cleared. The woodland at Abbey Hill on Chester Road was another area being used for fly tipping and dumping old furniture. After getting a grant to have it cleared we planted another 30 beech trees, and later we put up an owl box. Mary Carter, who was head teacher at Delamere school, got the children to plant it with wild flowers. There is a badger set there now, and it is regularly visited by foxes.

Another project with the children from the school was to plant an avenue of trees on the A54 between the Fishpool and the school. We also laid the limestone path around the woodland on Eddisbury Hill, next to the Ridge. We set up a workgroup to put in the edging, lay the stone and install the bench. We could do more with the woodland now. Perhaps a bird table? Or make it a proper nature reserve, and put up a notice, like Oakmere's Little Wood?



PC Chairman Anthony Goulty (1985/6) plants a tree by the A54, with Alex Goodwin holding it and Mary Carter hiding behind it

John Grimshaw

I joined Delamere PC when we moved to Willington 31 years ago. Before I arrived 'The Green' as you see it today was created from the village tip. It is now the scene of working parties organised by me, and an annual village picnic organised in the past by Michael and Isobel McIntyre. On the subject of 'tips' I organised the removal of loads of rubbish below the 'German Wall' on Rough Low, again aided by many villagers.

When I arrived in Willington we had a traditional black and white finger post on Willington Corner. A learner driver demolished it. I found another one buried in a hedge by Willington Hall. Highways removed it to my house where I cleaned and repainted it prior to installation, with new fingers paid for by the PC.



The Green at Willington Corner

We used to have a concrete bus shelter (yes we had a bus then!), like the one that has just been replaced by Delamere School (ghastly thing!). I arranged the construction of the brick and slate one that you see today, paid for by the PC. The PC also replaced and painted the Cheshire Railings on the corner of Willington Rd and Quarry Lane. Jenny Harrison, a past Clerk to the Council, was very active in this project in particular.

Craig Keating (Vale Royal Planning)

I had a role in the work at Willington Green when I worked in the Specialist Services section of the Vale Royal Planning Dept. In those 'good old days' we actually had an annual budget for carrying out landscape enhancement projects across the District. A clay pit had been dug on the Willington site, and this had been dumped in over the years, along with *ad hoc* lorry and vehicle parking. As rubbish tends to attract more rubbish it was only going to get worse. A proposal to level and landscape the area with grass and trees, with two parking bays, was drawn up and displayed in the corner shop for comments. Since then the saplings have obviously developed and some of the weaker ones thinned out. Being in a village centre location, The Green has been used on a regular basis for annual village picnics and other events. It is also used by children as a play area and for picnicking.

Had The Green not been created, there may well have been pressure to develop the land for housing, and Willington would not have had such an attractive and useful amenity. Similar projects were also carried out adjacent to Station Road in Delamere and on The Yeld near Kelsall.

Jeremy Weston

When I first went on it, some time in the early 1990s, the council was enlivened by the presence of Alan Howarth, who was getting towards the end of his 40 years' service, and who really knew what he was talking about on all local issues. Another was Anthony Goulty, who had an encyclopaedic knowledge of nearly everything, and strong views about absolutely everything. Some people found this irritating. I found it stimulating, and we had some good old rows. His name could be pronounced in various ways, but he insisted it should rhyme with mouldy poultry.

The Council rubbed along happily, not doing anything much, not spending much, and not engaging much with the community, or vice versa, until Affordable Housing became an issue in 2009/10. A survey of the residents had shown a significant demand for houses to enable local people to get a toe on the housing ladder in the village where they had been brought up. Everyone, including the Council, thought this was a Good Thing. Two planning applications soon followed. It then turned out that everyone thought it was a Bad Thing. We had two Council meetings when the applications were on the agenda, each attended by more than 70 members of the public, all wanting to have their say. That didn't result in any affordable housing, but it did perhaps get more of the community interested in local affairs, and some new faces on the Council after the next election.

Oakmere

Katherine MacVicker

I joined OPC 25 years ago in January 1990, which is more than a life sentence, enough time to forget! My husband was the target, but was far too busy with business travel to consider co-option. Reluctantly they turned to me and I'm still here! This has been the pattern through the years. Not a single councillor since then to the present day has fought an election. Every single one has been persuaded, co-opted, and stood unopposed at election time. Everyone has had many opportunities to volunteer for the council themselves, but may not have realised it.

When I first joined Mary Carter had already been Clerk for 2 years. She had been Head Teacher of Delamere Church Primary School for many years. We used to joke that she kept the councillors in order like naughty children! Over 24 years she became a font of knowledge.

Joan Slater was Chairman in those days. She was Mayor of Vale Royal, a borough councillor, and seemed to know everything about planning. She was very keen on site visits and we went all over the place to 'see for ourselves'. Our favourite visit was to the Fourways Quarry, where on a warm summer's day we had a boat trip all around the lake. We were like kids out of school. On another occasion we were driven around Crown Farm Quarry. Christopher Allen, a long term councillor and 'birdie', was over the moon. The digger was exposing sand martins' nests.



David Hodkinson
Landscaping and Garden
Maintenance Service

from small jobs to large

25 years' experience in the garden
industry (formerly Acton Bridge Garden
Centre Proprietor)

please call Dave on
07791414919/ 01606 624364

email:
gentlemengardeners@gmail.com

Alexander Caravan Services



Caravan/motorhome servicing and repairs
Horsebox and trailer repairs
Parts and accessories
Calor gas stockists
and now - Calor woodfuels and coal!

www.alexandercaravanservices.co.uk

Stud farm buildings, Oakmere, Cheshire

01606 883613

John Lynch came onto the council in the 90's and stayed till the Fourways was sold in 2005. Our meetings until then were held in the Oakmere room at the Fourways. John spoiled us with coffee and biscuits, and mince pies before Christmas. Those were the days!

In the past ten years OPC has had the benefit of a wide range of talents and experience. Tony Penny was succeeded after a gap by his stepson Alan Lewis. Eric Hodgson was followed by his wife Diane. Philip Cowap and Angela Ford worked hard and moved on. Sylvia Alexander was a fount of local knowledge. Ron Billows gave a valuable insight into local policing. Liz Houston gave us the perspective of a young mother and was instrumental in the creation of the Oakmere Community Led Planning Framework along with Diane Hodgson, Bill McGibbon and a planning consultancy firm.

Still with us are the wise heads of Tony Overland, Yvonne Billows and our current Chairman Bill McGibbon. Our newest member is Ceri Rothwell, who has children at the school.

The Little Wood was bought at auction soon after I started. It was paid for by public donation and a grant from Vale Royal. The Forestry Commission wanted rid of it, and the fear was that a local caravan sales company might acquire it. The lovely old trees needed urgent felling for safety reasons and many locals were angry with the PC for doing this. The consequent no-mans land was replanted with young trees by Air Force Cadets led by Sandy Henderson. I can remember Mary Carter and me toiling on our knees. After 10 years or so the Little Wood became a delightful place for people of all ages and their dogs. For some years the councillors took it in turns to do safety inspections at least once a month, but with the advent of a CWaC ranger that burden has been removed. More recently Liz Houston instigated the equipping of a Childrens Play Area with sturdy equipment and a short zip wire. OPC looked for funding and eventually a special grant was received for this project.

When I was Chairman, safety at the Abbey Arms was of great concern. We persuaded the police and the planners to meet us, and challenged the police car to emerge from Abbey Lane and turn right towards Northwich on the A556. They returned to the meeting white-faced. Not long after the 50mph limit was brought in. Accidents are still far too common

but the speed reduction has improved the figures.

When housing on the Fourways site was mooted the developers met with OPC to discuss plans. When LPG tanks were included as part of the plan OPC asked 'Why not bring in mains gas from Sandiway?' To our surprise and at significant cost to the developer, this has happened.

Some years ago, on behalf of OPC, I persuaded the Forestry Commission to provide a Permissive Path alongside the railway, between the Whitegate Way and Stonyford Lane. With the more recent opening of the Oakmere Way from Stonyford Lane to Delamere station we now have a continuous route between the Whitegate Way and Delamere Forest. This was the vision of OP Councillor Tony Overland, albeit in his role as a member of Mid Cheshire Bridleways Association, and in conjunction with the Forestry Commission, Tarmac and Natural England.



The Oakmere Way

When housing on the Fourways site was mooted the developers met with OPC to discuss plans. Perhaps our most recent challenge has been to 'Save the North', that is all of Oakmere north of the railway, from being transferred to Norley in the Local Governance Review. Residents were canvassed and a significant majority preferred to maintain the status quo. We said we were 'proud to live in Oakmere'. Now, as we amalgamate with Delamere, it is important that Oakmere Ward retains its particular character and identity while gaining strength from working together.

Website update

At the beginning of this year DX Digital (the company that designed the website for us, free of charge) told us that they would not be able to support it for much longer. Cheshire West and Chester's web support team are now hosting the site and providing ongoing support. The transfer went so smoothly that you probably never noticed! CW&C have to charge us for the service, but at a competitive rate. The cost is being shared between the Parish Councils and the Community Association.

Some interim changes to the website will be made when the two existing parish councils are dissolved at the end of March, to be followed by further changes when the new Delamere and Oakmere council is formed.

Wildflower watch



A government-backed plant monitoring scheme launched by the Botanical Society of Britain and Ireland, the Centre for Ecology, the Joint Nature Conservation Committee and Plantlife is **looking for volunteers to record the country's flora**. Similar voluntary efforts have given a good understanding of year to year changes in the populations of birds, butterflies and bats, and the new scheme will extend this to plant populations.

Each volunteer (or volunteer group) will be allocated a 1 km square, within which they will be asked to monitor the 'indicator species' twice a year in around 5 plots. You do not need to be an experienced botanist. A guidebook and other training materials are provided, along with the opportunity to attend free workshops.

For more information visit
www.npms.org.uk



Poetry corner

Something to Look Forward To

by Thelma Ashbrook

Roll on the spring time
 the birds start-to-sing time,
 when flowers are starting to bloom,
 and the sun shines so bright
 it gives you quite a fright
 'cause it shows up the dust in your room.

You don't feel quite so old
 now your feet are not cold,
 your strength you are trying to muster.
 You'll feel quite a fast mover
 as you follow your Hoover
 and dive around with the old yellow duster.

You can dig out your sandals
 your beads and your bangles,
 pretend you are still twenty-one.
 Get out there while you can,
 you might just get a tan
 when the moon shines and winter is gone.

End of a Budding Romance

by Thelma Ashbrook

I found a young toy-boy
 just seventy five,
 a young chap like that
 makes a girl feel alive.
 I thought perhaps this year
 I'll have a nice present,
 he's not badly off,
 maybe get something decent.

He may buy me perfume,
 expensive gold bling.
 What if he turns up
 with a diamond ring?
 A real silver locket
 or a bunch of red roses?
 What will I say if
 he goes and proposes?

Well you know how it feels
 when a gift disappoints.
 He's bought me some stuff
 to rub on my joints!



J&S Oakmere

Motorcycle Megastore

THE BIGGEST MOTORCYCLE AND ACCESSORIES STORE IN THE UK!

J&S Accessories Ltd was started in Northwich nearly 30 years ago, and now has twenty six stores nationwide - ***including a brand new shop in Manchester!*** The Northwich store moved to Oakmere in 2012.

- **Massive selection of motorcycle clothing and accessories**
- **Main Kawasaki dealer**
- **Massive selection of brands**
- **Service and parts department**
- **Café serving hot and cold food and drinks**

J&S Accessories Oakmere is a Kawasaki dealer with a motorbike showroom, and extensive clothing, helmet, boot and ladies departments amongst others. The store has a large customer carpark to the rear of the building.

On the A556 Chester Road

**Oakmere,
Northwich,
Cheshire,
CW8 2HB**

Telephone: 01606 810800

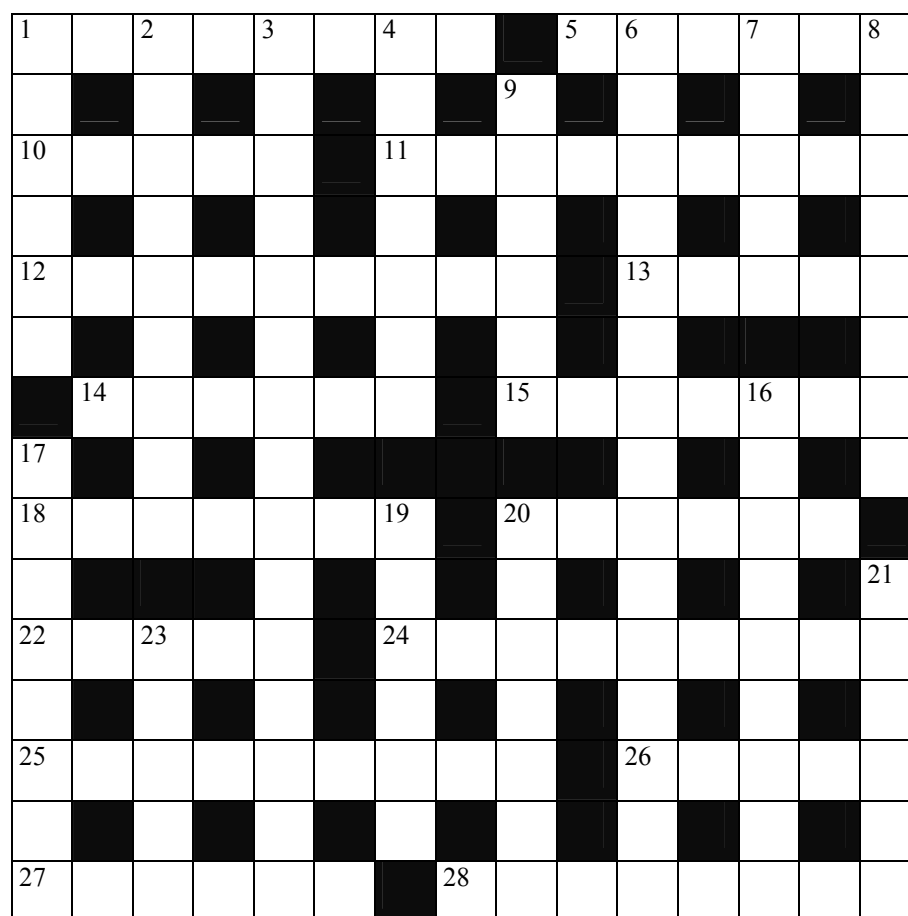
Website: www.jsaccessories.co.uk

Opening Hours

Mon-Fri:	9.00 - 18.00
Sat:	9.00 - 17.30
Sun:	10.30 - 16.00

Crossword

By Firbob

Across

- 1, 5 .Lee's dream o' rest disturbed here! (8, 6)
 10. Ordnance loses one direction - and becomes one ordained (5)
 11. A scientist's number 38 (9)
 12. Nothing inside our heads perhaps at this Mancunian nightclub (9)
 13. Chaucer's dishonest tale-teller (5)
 14. Awkward ass- it's in an immovable state (6)
 15. Found in Alice's well (7)
 18. Strange, strange stones (7)
 20. Now beheaded, this verb still wanders on (6)
 22. Choose to be in charge. What a nerve! (5)
 24. Fortified (9)
 25. Magic lifter (9)
 26. Fat surrounds one Scottish nobleman (5)
 27. Enjoy the taste! (6)
 28. Irish harbingers of death (8)

Down

1. Take the heart out of hard fruit. (6)
 2. City bomber (9)
 3. I'd hate changed stadium. Whose? (10, 5)
 4. Secures order and makes safe (7)
 6. All there before the accidental fall? (3,5,7)

7. Home of Wagner's alluring girls (5)
 8. Aestivated? (8)
 9. Very keen to be found in the garden today (6)
 16. Jazz singer sounds like a carriageway reserved for French cars (4,5)
 17. Less worthy than 26 across (8)
 19. Antarctic camp provides surgical tubes (6)
 20. Good German prince heads article on Canadian province. (7)
 21. Unhappy goddess turns up as sportswear manufacturer (6)
 23. French rosé wine (5)

*Answers at the bottom of page 5****Use the Post Office!***

Some of us depend on our outreach Post Office in the Community Centre, others forget it's there. To be sure of keeping it we need to use it more.



Opening hours:

Wednesday 9.30am - 2pm
Friday 9.30am - 1pm

Wordsearch

By Yeti

D	E	F	E	R	E	M	A	L	E	D	N	O	Y
O	D	K	O	N	E	R	R	B	O	O	T	T	F
A	U	X	I	X	A	A	L	I	T	S	R	L	F
K	G	N	B	B	C	F	T	S	K	A	O	A	Y
M	O	N	B	A	T	S	N	L	A	G	F	Y	R
E	U	I	D	R	E	I	A	O	E	A	L	O	U
R	T	E	A	R	L	W	W	N	R	T	L	R	B
E	M	I	O	L	L	L	I	H	J	E	I	E	S
Y	N	F	I	S	H	P	O	O	L	S	H	L	I
E	Q	W	S	M	R	A	Y	E	B	B	A	A	D
E	R	O	T	S	E	G	A	L	L	I	V	V	D
C	M	Z	D	R	A	Z	Z	U	B	C	A	F	E
S	E	N	O	T	S	G	N	I	D	N	A	T	S

ABBEY ARMS
 ACADEMY
 BIKE
 BOOT
 BUZZARD
 CAFE
 DELAMERE
 DUGOUT
 EDDISBURY
 FARM

FISHPOOL
 FOREST
 FOX
 GATES
 GOLF
 HERON
 HILL
 HILLFORT
 INN
 MOSS

OAKMERE
 OAKS
 PINE
 RABBIT
 STANDING STONES
 TRAIN
 VALE ROYAL
 VILLAGE STORE
 WALKS
 WILLINGTON



Four Oaks at Oakmere is a delightful residential development of 4 and 5 bedroom executive family homes, impeccably designed for practical, sophisticated, modern living, which blend beautifully with the area's established character.

Set against a backdrop of woodland, Four Oaks is situated close to Delamere Forest, with its 2400 acres of woodland, walking paths, meres and endless cycling trails, with Cheshire Polo Club and Delamere Golf Club just a five minute journey by car.

Don't miss the chance to buy your dream home at this prestigious development - **Only 5 plots remaining.**

Prices from £289,950

Prices correct at time of going to press. Photographs shown are for illustrative purposes only.
*Offers subject to status, terms and conditions apply. full details will be provided on request.



The Symbol of Quality

**Don't miss out -
last 5 homes remaining**
at this prestigious
development including
the Raleigh 5 bedroom
ex-Showhome



Great incentives available
including **Part Exchange**
or **Help to Buy**

For further information contact the
Sales & Marketing Suite
open Thursday to Monday Inclusive 10am – 5pm
Telephone **01606 888320**

Tuesday & Wednesday please contact
Head Office on **01925 859650**

www.wainhomes.net



WAINHOMES
BUILDING BRITAIN'S HERITAGE



Vale Royal Abbey Arms

Chester Road, Oakmere, Northwich, Cheshire, CW8 2HB

Drop us a line, Tel: 01606 882747
email: valeroyal.delamere@greeneking.co.uk
Or visit our website: www.oldenglishinns.co.uk

As Spring fast approaches, we're getting ready for the return of the sunshine at the Vale Royal Abbey Arms. With a great menu to tickle your taste buds, and a fabulous range of drinks we can't wait for you to join us.

Why not join us for our amazing 'all you can eat Indian buffet' on the last Friday of every month, for only £12.99 per person.

There's always a warm welcome waiting for you at The Vale Royal Abbey Arms



Find Us.

The Vale Royal Abbey Arms is situated on the Chester Road (A556) heading towards Northwich.

We are located on the crossroads with Station Road and Abbey Lane, just a mile from Delamere train station.



We'd love to welcome you...

ENJOY A FREE HOT DRINK ON US!

ENJOY A REGULAR HOT DRINK FROM OUR RANGE OF COFFEES
AND TEAS, WHEN YOU PRESENT THIS VOUCHER

Valid until April 12th 2015

Vale Royal Abbey Arms