

Delamere and Oakmere News



Number 35

Autumn/Winter 2015



In this issue:

- Wildlife notes
- Archaeological finds
- A memory of 1940

Forthcoming events

Church services

St Peter's Church, Delamere

Regular services

Every Sunday at 8am	Holy Communion
On the first and third Sunday at 10.30am	Holy Communion
On the second Sunday at 10.30am	Family Service
On the fourth and fifth Sunday at 10.30am	Morning Worship

Christmas services

Sunday 20 th December	10.30am	Informal Worship followed by seasonal refreshments.
	6.30pm	Carols by Candlelight
Christmas Eve	4.00pm	Christingle
	11.30pm	Holy Communion
Christmas Day	8.00am	Holy Communion
	10.30am	Family Service with Holy Communion
Sunday 27 th December	8.00am	Holy Communion
	10.30am	Carols and Readings for Christmas

Oakmere Methodist Church

In the main church at 10.45am every Sunday morning for a service led by a Methodist Local Preacher or Minister. One service a month includes the sacrament of Holy Communion, led by a Minister (Presbyter).
Contacts: Anne or Eric Wright (01829 732950) or Rev Denise Harding (01928 733180).

Delamere and District Golden Club

Dec.9 th	1-4pm	Christmas Festive Lunch with entertainment by the Concordia Choir.
Jan.13 th	2-4pm	Party Food Cooking by Lorena Anderson (Please bring a red item for the sales table.)
Jan 27 th	2-4pm	Burns Night Celebrations with the Kelsall Scottish Dancers.
Feb.10 th	1-4pm	Hotpot Lunch and Beetle Drive
Feb 24 th	2pm	Fun Exercises and Chairbobs with Sheena Stallard.
Mar 9 th	2-4pm	Delamere Derby

EASTER BREAK

Mar 23 rd	2-4pm	Speaker: Mr. Peter Ashburner of Wright Marshall Fine Art, including a Road Show.
Apr 13 th	1-4pm	Lunch followed by AGM

We meet every fortnight on Wednesday afternoons, except August, at Delamere Community Centre, Station Road CW8 2HU. Annual subscription £3.00. There is no upper or lower age limit! For all enquiries regarding events or membership please contact Gloria or Robin Ackerley tel: 01829 752723.

W.I.

Date	Speaker	Title
January 12 th	Cynthia Green	A Visit to National Parks in the USA
February 9 th	Games evening	Have a go at Indoor Curling
March 8 th	Peter Turner	Through the Eyes of a Magician
April 12 th	Liz Weston	Autobiography of a Common Woman - Part II

President: Lorraine Roberts 889188, Secretary: Mrs S Goodwin 888921, Treasurer: Mrs C Green 882264. Meetings are held at 7.30pm, every second Tuesday in the month except for August, at Delamere Community Centre. <https://twitter.com/delamerewi>, <https://www.facebook.com/DelamereWI>

Answers to crossword

Across: 1 after, 2 lemmu, 8 drivet, 9 Nassau, 10 consequences, 11 abate, 13 valet, 15 Farthingales, 18 badger, 19 school, 20 Eaton, 21 snare. **Down:** 2 Formosa, 3 Elvis, 4 lemmu, 5 musical, 6 roads, 7 plaque, 12 alight, 13 vanish, 14 the poor, 15 flame, 16 heron, 17 ashen.

Discover a great day out this Christmas!

Blakemere Village has so much to offer you this season from finding Santa in the woods to festive lunches and an abundance of gift ideas for your loved ones!



Blakemere
Est. 1994 **Village**

Blakemere
Touring Park

Carnivals, performances and camping



Open 7 days a week 10am - 5pm
FREE admission to site - FREE parking

visitblakemere.co.uk

Northwich, Cheshire CW8 2EB 01606 883261

Alexander Caravan Services

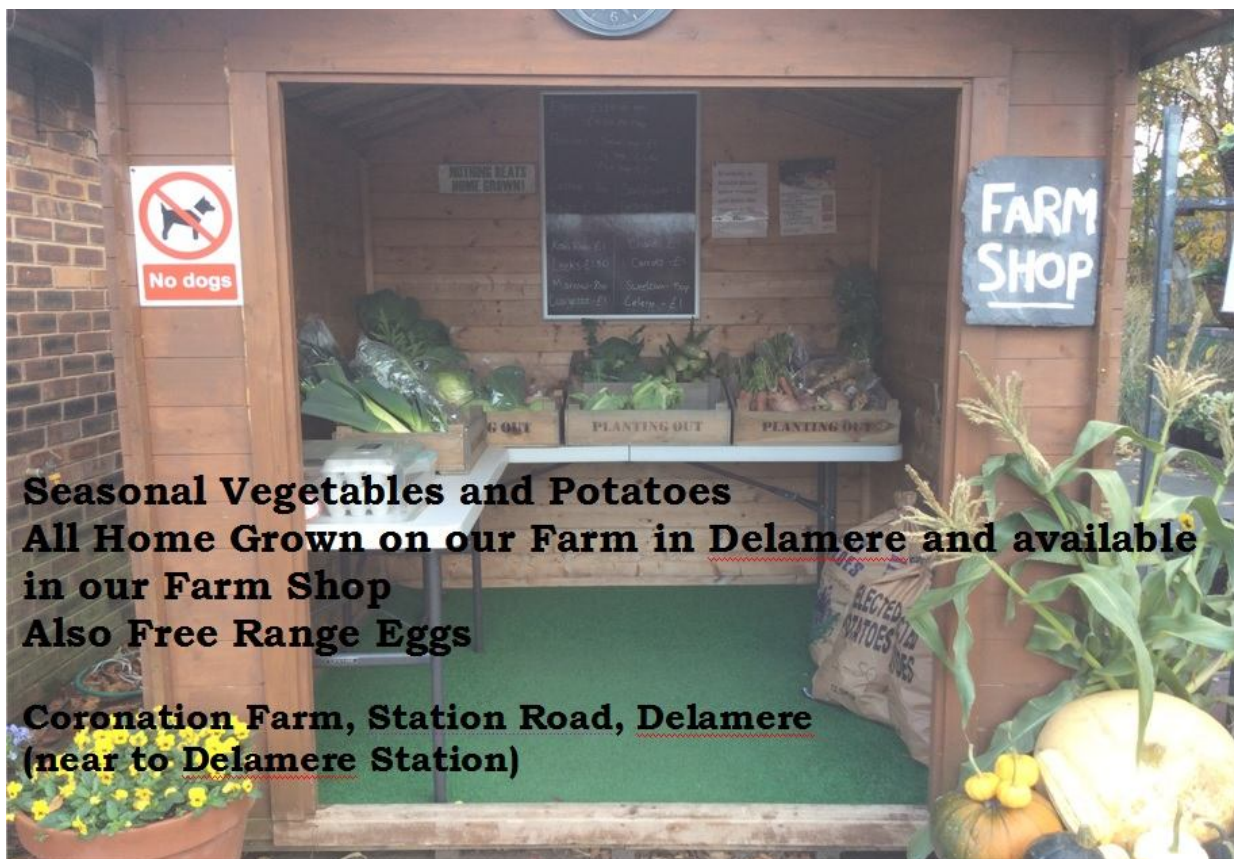


**Caravan/motorhome servicing and repairs
Horsebox and trailer repairs
Parts and accessories
Calor gas stockists
and now - Calor woodfuels and coal!**

www.alexandercaravanservices.co.uk

Stud farm buildings, Oakmere, Cheshire

01606 883613



Seasonal Vegetables and Potatoes

**All Home Grown on our Farm in Delamere and available
in our Farm Shop**

Also Free Range Eggs

**Coronation Farm, Station Road, Delamere
(near to Delamere Station)**

Foreword

Readers who have walked the Oakmere Way will probably be familiar with the view on the cover, looking towards Hornby's Rough from the eastern end of the footpath. The rolling fields below can be seen from a little further round.

Our local countryside features strongly in this issue, with a piece from David Wright about Delamere and Oakmere wildlife, a news update from the Cheshire Wildlife Trust, a call for volunteer footpath wardens, and a note on local archaeological finds. We also have a very personal note on Delamere's wartime history written by Jeannie Ashbrook, a piece on the WI's centenary celebrations, more poems, another crossword, and lots more.

The community website

Don't forget that Delamere and Oakmere have a website, managed jointly by the Parish Council and the Community Association. It provides general information about the parish, and news items that are more up to date than published here.

<http://www.delamereandoakmere.co.uk/>

And Facebook too

For news items that are even more up to date than the website, and to post your own items to share with other members of the community, join the Delamere and Oakmere Facebook group.

<https://www.facebook.com/groups/389577814488267>

About the newsletter

Delamere and Oakmere News is published three times a year, with the next issue due in March. Articles, ideas for articles, news of recent events or forthcoming ones, advertisements, photographs, and any other contributions relevant to Delamere and/or Oakmere are all very welcome (inclusion subject to editorial discretion).

The newsletter is available in **full colour** on the Delamere and Oakmere Community website. You can also get a PDF file of the colour version by email (contact us if you would like a copy).

do_newseditor@yahoo.co.uk
or ring 01606 882183



Letter from the Rector

November 2015

Dear Friends

Many thanks to everyone who supported the St Peter's Garden Party held on 4th July. It was lovely to see so many from our local community coming together to spend an afternoon in the sunshine. It was a wonderful time of fellowship and fun. Many thanks to all those businesses, companies, our local store and to all the individuals who generously donated items for the stalls and prizes for the side shows your generosity is very much appreciated. Thank you to Farmer David for allowing cars to be parked on his field. Over £1,400 was raised for church funds.

I have just been leafing through my mother's scrap-book and found the following:

One Solitary Life

Here is a man who was born in an obscure village, the child of a peasant woman. He worked in a carpenter's shop until he was thirty. Then for three years he was an itinerant preacher. He had no credentials except himself.

While still a young man the tide of popular opinion turned against him. His friends, the twelve who had learned so much from him and had promised him their undying loyalty ran away and left him. He went through a mockery of a trial. He was nailed to a cross between two thieves. While he was dying, his executioners gambled for his clothing, the only property he had on earth. When he was dead he was laid in a borrowed grave through the pity of a friend.

Yet I am well within the mark when I say that all the armies that ever marched, all the parliaments that ever sat and all the kings that ever reigned, put together, have not affected the life of men and women on this earth as much as that one solitary life.

(Author unknown but attributed to J A Francis)

When Jesus walked this earth he taught his followers through the words he spoke, through the things he did and through the way he lived his life. He wants us to trust God as a loving father, to pray to him in faith, following in his ways and living lives of generosity, faith, simplicity and love.

Even after all this time there are over 2 billion people who follow Jesus, who call him Lord. They believe that after his cruel death God raised him from the dead to demonstrate to all people, for all time, that goodness will triumph over evil; justice over injustice, love over hate. In Isaiah 43:4 God tells each one of us 'you are precious in my sight, and I love you.'

We warmly invite you to worship with us at St Peter's, each Sunday there are services at 8am and 10.30am. On the 2nd Sunday of each month at 10.30am, we have a service for all the family.

Do contact me by telephone or email if you would like me to visit or pray for you.

Brian joins me in sending good wishes and blessings

Revd Elaine
The Rectory
Chester Road
Delamere, CW8 2HS



Christmas Services **20th December 2015**

At 10.30am - informal Worship for Christmastide. The service will be followed by seasonal refreshments in the Church Room.

At 6.30pm Carols by Candlelight – come and sing well-loved carols and hear the familiar readings for Christmas.

Christmas Eve

Christingle Service at 4pm – a service for all the family with Christingles for all the children. Please will the children (and adults too!) come dressed as a shepherd, a wise man/woman or an angel.

Holy Communion at 11.30pm – the first communion of Christmas.

Christmas Day

Holy Communion at 8am (Book of Common Prayer)

Family Service with Holy Communion at 10.30am – please bring one of your presents to show everyone.

Sunday after Christmas – 27th December 2015

8am Holy Communion (BCP)

10.30am - Carols and Readings for Christmas.

EMBRACE PSYCHOLOGICAL SERVICES

Embracing Life...Hope...Change



The British
Psychological Society
Promoting excellence in psychology

hcpc health & care
professions
council

www.embrace-psych.co.uk

We offer quality Clinical Psychology and Psychotherapy services from a HCPC-Registered and BPS Chartered clinical psychologist and ACAT-accredited practitioner in Cognitive Analytic Therapy.

We specialise in the assessment and treatment of individuals with a range of psychological difficulties including:

Stress
Anxiety, panic attacks and phobias
Depression
Poor confidence and low self-esteem
Loss and bereavement
Relationship difficulties
Interpersonal and personality difficulties
Trauma and abuse

We also specialise in working with people who experience *chronic pain* and *chronic ct*

ACAT

The Association for Cognitive Analytic Therapy

Weaver Business Centre, Winnington Ave, Winnington CW8 4EE

Tel: 0780 175 6808

E: contact@embrace-psych.co.uk



David Hodkinson Landscaping and Garden Maintenance Service

**from small jobs to
large**

**25 years' experience in the garden industry
(formerly Acton Bridge Garden Centre
Proprietor)**

please call Dave on

07791414919/ 01606 624364

email:

gentlemengardeners@gmail.com

Spanns  garage

Motorcycles, Scooters, Trykes, Quads
Cars, Vans and Three Wheel Cars
MOTs, Tyres, Servicing, Repairs, Air
Conditioning, Diagnostics
Collection from local area

Opening Hours:

8.30 am – 5.30 pm Monday to Friday

8.00 am – 1.00 pm Saturday (MOTs only)

Tel: 01606 882219

Fax: 01606 881700

Email: spanns.garage@zen.co.uk

www.spannsgarage.co.uk

Dalefords Lane

Whitegate

CW8 2BW

St Peter's Notice Board

From the Registers – July to October 2015

We welcomed by Baptism:

July

Sam Thomas Perry, son of Kristina and Ryan

August

Valentina Gray Malasomma, daughter of Gemma and Ben

September

Emily Louise Roberts, daughter of Helen and Steven

and Confirmation:

October

Jennifer Ann Bowman
Sally Margaret Heath
Rachel Jane Heath

We said farewell to:

July

David Samuel Chadwick

October

Anne Brown

Plough Sunday

We will be celebrating Plough Sunday with a special service on 17th January 2016 at 10.30am. After the service there will be a Ploughman's Lunch at The Rectory to support the work of the Cheshire Agricultural Chaplaincy.

Fundraising Evening!

Friday 5th February at 7.30pm Delamere Community Centre.

A fund-raising evening in aid of St Peter's Church. An illustrated talk by Mr David Cummings – tickets – £7 - will be available soon. The evening will include a glass of wine or juice and 'nibbles'. Please put the date in your diary now!

Lent & Easter 2016

Lent begins on Ash Wednesday – 10th February, Maundy Thursday – 24th March, Good Friday 25th March and Easter Day 27th March.

There will be a service of Holy Communion at 7pm on Ash Wednesday and commencing on 18th February Compline (Night Prayer) will be said each Thursday evening at 7pm the bell will be rung before the service as a reminder that the service is taking place and that prayers are being offered for the local community.

Details of the Easter Services will be in the next newsletter and on the web-site.

For those who like to plan ahead! Easter Day in 2017 is 16th April. (DV)

Bicentenary Celebrations

St Peter's was consecrated on 27th November 1817 and we are planning to mark the occasion with a service of Thanksgiving for the laying of the Foundation Stone in September 2016 and a series of special events throughout 2017. There will be a service of Thanksgiving for the laying of the Foundation Stone on Sunday 18th September 2016 at 10.30am (DV).

St Peter's churchyard

In common with other local churchyards and cemeteries any Christmas wreaths remaining in the Churchyard will be removed at the end of February 2016.

Community Centre News

The Community Association committee is delighted to welcome Anita Gore as the Association's new Secretary. Anita has also taken on the role of Booking Secretary. To book the hall or one of the rooms ring 01606 882944.

The Barn Dance with Hog Roast on 6th November was a huge success. Many thanks to Robin and Gloria Ackerley for organising it, and to the other volunteers who manned the kitchen.



The barn dance - photo Gloria Ackerley

Pat and Derek give a big thank-you to everyone who sent cards and good wishes during Pat's stay in hospital. We are glad to hear that she is making good progress and expects to be back to normal soon.



Delamere Community Centre

Registered Charity no 504881

5 Station Road, Delamere CW8 2HU

“Christmas Quiz Night”

On

Friday 4th December

Doors open 7.15 - Quiz starts at 7.45

Quiz Master Steve Lacey

Tickets are £4 per person



Includes quiz, tea, coffee, squash and nibbles. You can bring your own alcoholic drinks/glasses if you prefer.

Quiz teams of between 4 – 6 people; if there are not 4 of you please do come along as you can still be part of a team.

Prizes for the winning team

Raffle

Further information can be obtained from:
Steve Lacey 01270 780777 email: steve@slamonline.co.uk



DELAMERE FOREST GOLF CLUB



Delamere Forest Golf Club is widely regarded as one of the finest traditional heathland golf courses in England, rated by Top 100 Golf Courses as the best inland course in Cheshire and 62nd in England. Situated in the heart of rural Cheshire but with easy access, Delamere features rolling fairways interspersed with heather and gorse, crowned by fast, subtle greens. As a result the course offers a fair but tough challenge to visitors and members alike.

The original clubhouse, built over 100 years ago to the Cheshire 'black and white' design, has been substantially improved in recent years to provide excellent facilities for members and visitors.

Since its foundation Delamere has built strong links with the County, hosting the inaugural Cheshire County Meeting in 1921. In addition the annual Doris Chambers Ladies County Competition and the County Boys' Championship have been held at the club for over 30 years.



In 2012 the club took the momentous decision to strengthen the course and reinstate its original heathland character. The renowned golf architects Mackenzie and Ebert, who had recently completed the remodelling of Royal Lytham and St Anne's for the Open Championship, were commissioned to carry out the task. The work commenced in late 2012 and is now complete. Every bunker has been returned to the original 1910 design of the distinguished architect Herbert Fowler, and all of the greens have been increased in size to provide additional options and run-off areas. As a result the century-old character of Delamere has been reinstated, and a new Blue Course of over 6600 yards (including 8 new tees) is available for County and National events.

For membership and all other general queries please contact:

Club Secretary - Mike Towers, 01606 883800 option 1

For visitor or society bookings and course status information please contact:

Club Professional - Martin Brown, 01606 883800 option 2

For catering enquiries or confirmation and all bar related issues please contact:

House Manager - Ian Wharmby, 01606 883800 option 3

Delamere Forest Golf Club, Station Road, Delamere, Cheshire, CW8 2JE

Parish Council

Chairman's Letter

The new Parish Council has now got a full complement of members, with each of the wards represented by six councillors. When meetings commenced Oakmere had five members and Delamere just four. Three new councillors have been appointed, Andrew Bell and Anita Gore representing Delamere ward, and John Edwards representing Oakmere ward. The full list of councillors appears below.

Much the most significant event in these early days was the Launch Evening at the Community Centre on September 4th. Local residents were invited to attend the informal occasion, to enjoy the cheese and wine and to meet the two local county councillors, John Leather and Hugo Deynem, the latter as Lord Mayor of Chester no less in his mayoral regalia. Our guest of honour was the recently-elected Member of Parliament for Eddisbury Antoinette Sandbach, who, together with the Lord Mayor, addressed the gathering.

The whole occasion provided a wonderful opportunity for our scattered community to come together, to get to know the parish and county councillors, to meet our new MP and to take part in what turned out to be a thoroughly enjoyable evening. Indeed so successful was the event that there are suggestions that it may well turn into an annual occasion.

At the October meeting we discussed the possibility of installing a defibrillator at the Community Centre, an idea first put forward by our clerk, Joanne Monks at the time of the Launch Event. It was agreed that it should be looked into further, but councillors were taken unawares by the speed with which our clerk went into action. On November 4th, in answer to her enquiry, Joanne heard from the British Heart Foundation that they would provide a defibrillator free of charge. We expect it to be installed early in the New Year.

Members of the Parish Council have been rather taken aback by the volume of business that has to be attended to. There are significant developments afoot: these include the prospect of a major housing estate on the old Marley site and the establishment of a leisure complex around the lake on the former Tilcon site. These and the host of other proposed changes could have a significant effect on our environment – not least on our roads of course. It will be the

duty of the Parish Council to monitor and to exercise whatever authority lies within its power in the interests of our community.

On behalf of all Parish Council members may I wish you all a very Happy Christmas.

Robin Ackerley
Chair, Delamere and Oakmere Parish Council

Parish Councillors

Delamere Ward

Robin Ackerley (Chair), Stoney Lane
Andrew Bell, Linnere Cottages
Clive George, Station Road
Anita Gore, Eddisbury Hill
David Rutter, Chester Road
Derek Wheeler, Station Road

Oakmere Ward

Yvonne Billows (Vice-Chair), Chester Road
John Edwards, Lymere Moss Farm
Allan Lewis, Forest Road
Katherine Macvicker, Gallowsclough Lane
Tony Overland, Stonyford Lane
Ceri Rothwell, Abbey Lane

The D and O launch event

Photos courtesy Gloria Ackerley.



Robin begins his speech



The WI stand guard over the buffet



The Lady Mayoress mingles



Robin nears the end of his speech

Neighbourhood Plan – call for interest

The Parish Council has been looking into the possibility of developing a Neighbourhood Plan, which would go beyond Delamere's Parish Plan and Oakmere's Community-led Planning Framework to give local people more influence over future development in the parish. If you might be interested in joining a team of volunteers to produce such a plan please contact the Clerk to the Council

delamereandoakmereclerk@yahoo.co.uk
01928 732062

Have your say – local news

One of our readers has suggested that we introduce a "Letters to the Editor" column in which you can comment on local topics and issues. If you would like to take advantage of this, send your letter to *do_newseditor@yahoo.co.uk* marked "letter to editor".

Have your say – CW&C cuts

Cheshire West and Chester Council faces a 17% cut in its budget as a result of central government measures. Before finalising its spending priorities CW&C is encouraging us to have our say through a consultation called 'Let's Talk'. A summary booklet and quick

questionnaire are available, but to participate fully you will need to download the full booklet and complete the full questionnaire.

The booklet sets out the Council's priorities, and how it proposes to pay for them with its reduced budget. The style is a little Orwellian. Possible action to achieve 'A well connected and accessible borough' includes introducing parking charges in areas such as Northwich and Winsford. Potential action to deliver the 'Cleanest, safest and most sustainable neighbourhoods in the country' includes reducing or stopping services such as street cleaning, the maintenance of open spaces and the provision of public conveniences.

Despite its 'Newspeak' style the booklet describes the Council's proposals clearly, and the on-line questionnaire gives the opportunity to comment on each of them. To participate, select the Let's Talk link at:

cheshirewestandchester.gov.uk

Calling All Village Carollers...

... to sing again on Christmas Eve, 10-12 noon, outside Delamere Stores, Station Road. Whether collecting your turkey, vegetables and fruit or last minute items, you are welcome to join in. Victorian costume optional!

Donations gratefully received for St.Peter's Church, Oakmere Methodist Church and Delamere Community Centre. Further details from *Gloria Ackerley 01829 752723*.

Wanted! – footpath wardens

CW&C are looking for local volunteers to routinely inspect the public rights of way in their area, report back any issues, carry out minor maintenance tasks such as keeping stiles and gates clear of vegetation, and potentially applying for funding for improvements.



Full training and basic tools will be provided. If you are interested in participating email: *richard.ankers@cheshirewestandchester.gov.uk* or call 0300 123 8 123.



J&S Oakmere

Motorcycle Megastore

THE BIGGEST MOTORCYCLE AND ACCESSORIES STORE IN THE UK!

J&S Accessories Ltd was started in Northwich nearly 30 years ago, and now has twenty six stores nationwide - ***including a brand new shop in Manchester!*** The Northwich store moved to Oakmere in 2012.

- **Massive selection of motorcycle clothing and accessories**
- **Main Kawasaki dealer**
- **Massive selection of brands**
- **Service and parts department**
- **Café serving hot and cold food and drinks**

J&S Accessories Oakmere is a Kawasaki dealer with a motorbike showroom, and extensive clothing, helmet, boot and ladies departments amongst others. The store has a large customer carpark to the rear of the building.

On the A556 Chester Road

**Oakmere,
Northwich,
Cheshire,
CW8 2HB**

Telephone: 01606 810800

Website: www.jsaccessories.co.uk

Opening Hours

Mon-Fri:	9.00 - 18.00
Sat:	9.00 - 17.30
Sun:	10.30 - 16.00

WI Centenary Celebrations

Lorraine Roberts

It was good to see so many members of the community coming together to enjoy afternoon tea on 14th September to celebrate the WI's centenary. In true WI fashion, the variety of sandwiches, scones and cakes were a joy to behold and, of course, to sample!



Wi husbands lend a hand



Many thanks to everyone who attended, helping to make the occasion so special and to the excellent WI team who provided the wonderful food and made everything run so smoothly.

Archaeological finds near Watling Street

In November Robin Latham of Organsdale Farm and the Nantwich Rotary Club held a charity metal detecting rally in the field alongside the footpath from Stoney Lane to Kelsall, which follows the route of the 'Watling Street' Roman road. Four Roman coins were among the 25 recorded finds, including a sestertius of the Emperor Trajan.



The oldest find was a rapier blade from the middle bronze age. BBC North West were in attendance, and are expected to broadcast the footage in the Inside Out programme in January or February. Once the finds have been researched by the Museum of Liverpool, the records will be available on the Portable Antiquities Scheme database:

www.finds.org.uk/database

Wildlife in Delamere and Oakmere

David Wright

Whilst the Meres and Mosses Project continues with its good work in the forest, other projects have also been successful.

A new species of butterfly to this area, the Ringlet, has increased in numbers on the Old Pale grasslands – discovered last year, its first



- 💧 **FREE ESTIMATES**
- 💧 **BATHROOM INSTALLATION**
- 💧 **KITCHEN INSTALLATION**
- 💧 **FLOOR AND WALL TILING**
- 💧 **MOBILITY SOLUTIONS**
- 💧 **ALL AREAS COVERED**



WATER INDUSTRY
APPROVED PLUMBERS



Water Safe
QUALITY ASSURED

www.mackaysplumbing.co.uk
info@mackaysplumbing.co.uk



Mackays Plumbing



@mackaysplumbing



Office: 01829 759 006 Mobile: 07974 668 315 Free: 0800 5422 136

**** NEW ****



- **Wrinkle reducing injections – e.g. crows feet, frown lines, forehead lines, ‘smokers’ lines etc.**
- **Dermal fillers**
- **Tooth Whitening**
- **Lip augmentation**
- **Anti Hyperhidrosis (excessive sweat reduction)**

Dr Woodside is a qualified dentist and member of the Royal College of Surgeons Edinburgh, working in local salons as well as mobile around the North West.

***** introductory offers available *****

Please call to book:

Dr Lucy Woodside 07860477641

Or email:

drwoodsidefacialaesthetics@gmail.com

record for that recording tetrad – not a rarity but a scarce butterfly in Cheshire.



Ringlets photographed on the Old Pale grasslands
by John Street

The Tree Sparrow boxes in Organsdale fields have had a very good year, with numerous young birds at the feeding station.

Nightjars were calling in the Forest as early as 23rd May. Two male Nightjars were churring together for the first time in many years with a third bird putting in an appearance at the same time.

The White Letter Hairstreak butterflies at Stoneyford Lane continue to suffer due to the loss of their food plant (the Elm tree). Many trees have been lost to Dutch Elm Disease despite our continued planting of young trees as replacements. It's a hard job to keep up with the loss. Over a hundred trees of an immune species of Elm were planted last year and one thousand young Wych Elm have been grown on to plant out soon.

Other on-going projects in this area include the construction of four newt ponds which will also be good for Dragonflies and pond life in general. Also, a wild flower meadow is in the

process of being created, by the Forestry Commission, at Lobslack Nursery.

Nature Notes from Cheshire Wildlife Trust

Hatchmere gets reserve re-vamp!

Cheshire goats' milk business, Delamere Dairy, is celebrating its 30th anniversary this year. Having started out with just a handful of goats at Eddisbury Lodge in Delamere Forest the company has gone from strength to strength, selling goats' milk and cheese worldwide from its new base near Knutsford. With its success having started in Delamere the company wanted to give something back, and has teamed up with CWT to help fund a new trail, complete with information boards, at the Trust's Hatchmere reserve. Delamere Dairy staff have helped to restore the path which ambles gently through a mosaic of wonderful natural habitats. Look out for more about the story on Delamere Dairy goats' milk cartons in January 2016 – and take a trip to Hatchmere to try it out for yourselves.




Delamere Dairy volunteer day at Hatchmere
©Heather Hulse

Delamere's dragons

With the support of the Forestry Commission Cheshire Wildlife Trust is continuing translocations of adult larvae from the donor sites in Staffordshire and Shropshire to Doolittle moss in Delamere.



2015 white-faced darter egg translocation to Doolittle
© Chris Meredith



THE DELAMERE
Cafe ACADEMY

STAFF ROOM
REFURBISHMENT

INTERIORS BY
Saspirella


Sometimes the smallest projects are the most challenging...and the most rewarding.

During our 20 years, we have designed flagship multimillion-pound interiors for some of the UK's best-known brands.

But our latest work for the award-winning Delamere Academy is one of our favourites.


Take a look and see how we took a limited budget and created a beautiful, bespoke space for staff to enjoy.

And if you would like to chat to us about any of your up & coming projects, please get in touch.




"A great team to work with and stunning value for money..."

- Steve Docking, Head Teacher Delamere Academy



"It's like coming home"

- Delamere Academy team



☎ 01606 851 051

✉ hello@saspirella.com

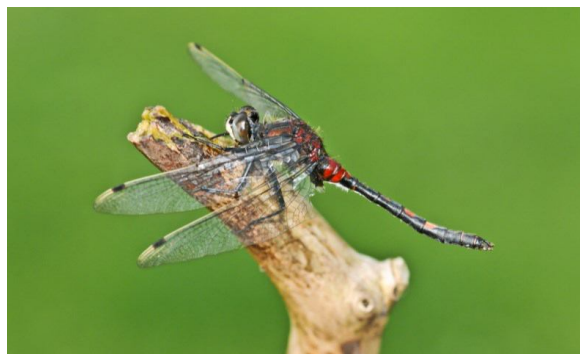
www.saspirella.com

SASPIRELLA LTD.
INTERIOR DESIGN
STUDIO
48 HIGH STREET,
WEAVERHAM
CHESHIRE,
CW8 3HB

Despite the colder weather, 150 larvae were successfully relocated. The Delamere's Dragons team, led by Chris Meredith, has since been busy monitoring the site. This year the team and local volunteers have seen white-faced darters emerging at the reintroduction site, as well as mature adults displaying breeding behaviour and utilising newly created flight corridors.

What's next?

Volunteers are gearing up for a winter of continuing work on flight corridors. These gaps between the woodland are vital for the sustainability of the rare dragonfly in Delamere as they help to connect the reintroduction site with other suitable mosslands which can allow the species to spread throughout the forest.



Male white-faced darter © David Morris

Each year the Delamere's Dragons team take on a volunteer trainee. This year the role was filled by Rachel Davies, a graduate zoologist from Bangor University, who has contributed to compiling these Nature Notes.

Twitter @CheshireWT #Delamere

<https://www.facebook.com/cheshirewildlifetrust>



Door-to-door transport

Cheshire Community Development Trust operate a Dial-a-Ride Scheme for anyone living in the Northwich and Winsford areas who cannot use ordinary buses due to disability. There are standard fares for all users of £3 per single journey or £5 return, or £6 for a day rider. People who travel with you to help you make your journey will be charged at the appropriate fare.

For further information and an application form ring 01606 784100.

The Night of the Air Raid November 1940

by Jeannie Ashbrook

This account of a night in the wartime history of Delamere was written for her daughter Lynn by Jeannie Ashbrook, shortly before her death at the age of 97 in August this year. Our thanks go to the Ashbrook family, who passed it on for the Newsletter.

Soldiers were billeted at The Fourways and Granny¹, who had a heart of gold, invited any of them to come and share an evening just whenever they felt the need of a bit of home comfort – and they often did. They warned her that decoys had been set up on Eddisbury Hill and, if the sirens went, to get out quickly and go down to the air-raid shelter². (The decoys were intended to attract the bombers from Liverpool)

It was my afternoon off. As usual I went home to Kelsall, did a bit of baking, had some tea and about 6.30 I went out to get my bicycle ready to go back to Delamere for my night on first-aid duty. A very low-flying plane came over, just seemed to fly over the garden. Dad pulled me back indoors. I waited until there was a quiet spell and then set off. I had a terrifying journey. I kept having to get off my bike and flatten myself against walls or hedges or dive into the forest. It was perilous, but somehow I got safely through to the Abbey Arms, which was the first-aid post.

Your dad³ was out with the ARP, but they all joined us and because the air-raids were so bad we all ended up in the Abbey Arms cellars, customers too, for no one dared venture out to go home. Just every now and again someone would just go out and check round. I don't remember what time it would be but things quietened down, although I don't remember the all-clear sounding, but by some instinct your dad and me just got our bikes and said we were going.

It seemed very quiet after all the noise of bombs going off and the planes zooming about. It was moonlight, seemed as light as day. As we came down the Black Hill I remarked to your dad that

¹ Mrs Ashbrook, who lived at Old Pale Cottages and was Jeannie's mother-in-law.

² Three air-raid shelters had been built in the field just beyond the school grounds.

³ Jeannie's husband, Fred.

the moonlight made the two cottages look a queer shape, but as we got nearer we could see that they were practically demolished. One was flattened. There was no one about so we went off down to the shelters. Everyone was safely there except Grandad. He had stayed behind to change his slippers and Granny thought he had gone up to the farm to sit with Mrs. Frith as Mr. Frith⁴ was on ARP duty.

Some officials came to tell them about the cottage. When they found that Grandad was missing they went to find him and advised us to stay put as there were still some aircraft about, but we were not very easy sitting there numbed with shock, so eventually everybody went back to their homes and we set off back up the lane. The sight was just horrific; men were searching about in the rubble and we joined them crawling about on our hands and knees. I can't describe it. Only if you have seen bombed cities on the telly can you imagine it.

We found the dog safely in his kennel and the canary in its cage. Then suddenly the local bobby said, "Here's the old man". Grandad was only 52. We went to someone's cottage and stayed for a while. Then we all went to Uncle Tom's⁵ house and we all stayed there until the funeral. How we slept in just two rooms, it all seems vague. I just don't seem to remember much about it, only visitors. They had no clothes. Everything was smashed. After the funeral I went to the farm.

That Christmas in Delamere School Granny cooked a dinner for all the soldiers. I really don't know how but I think the Army must have provided the food. I don't see how we could have mustered it up.

Later Granny was given a house in Frith Avenue. She had some soldiers billeted with her and she used to have their families to stay at weekends. One of them, Amy, invited your dad and me to stay in London with them and I kept in touch with her until two years back.

Postscript

by Robin Ackerley

Where the two Old Pale Cottages stood remained a bomb site until 1967 when my parents were able to buy the land from Norman Frith and our bungalow – The Paddock – was built. The two houses that were destroyed were

replaced in 1943 by 3 & 4 Old Pale Cottages; these were built by a Winsford builder, Billy Noden.

I remember my parents telling their account of what happened on the night that Jeannie has written about. When the sirens went all the people from the surrounding area made their way to the air-raid shelters. Granny Ashbrook said her husband would be following shortly. A little later three men who worked at the Old Pale farm with Mr. Ashbrook came into the shelter. They sat on their own and didn't speak to anyone.

When after some time Mr. Ashbrook had not appeared, it was decided to go and look for him and his body was discovered. It was only then that the three men who had come into the shelter told what had happened. Passing by the cottages they decided to call and see if anyone was still there. They found Mr. Ashbrook lying dead outside the back door. Shocked by what they had seen they walked down the lane to the shelters, but couldn't bring themselves to speak about what they had seen.

It seems that Mr. Ashbrook had been killed by the blast from a bomb that had fallen a little way from his home. Another bomb had subsequently fallen directly onto the cottages. Had the three men spoken up when they arrived at the shelter a party would have undoubtedly gone up to the site resulting in even more fatalities.

Note: The first name on the World War Two plaque in Delamere Church commemorating those who fell in the war is that of Charles Ashbrook. He is the Grandad mentioned as the bomb victim in this account.

Poetry corner

Another Noah, Another Flood

by Thelma Ashbrook

His mum called him Noah,
a biblical name.
She thought he and his namesake
might turn out the same.
Well, Noah got married
and had kids, as you do,
though not one to rush things,
he was seventy two.

Now it wasn't just heaven
that sent down the rains,
no, the local authority
missed some blocked drains.

⁴ Norman Frith, owner of the Old Pale Farm.

⁵ Tom Ashbrook, one the three sons of the deceased.

Noah thought "Perhaps I ought
to build us an ark,
but a boat of that size –
I'd have nowhere to park".

He said "At boat building
I'm really no good".
So he inflated a dinghy
to deal with the flood.
He told his poor missus,
his kids and their pets
"Come on jump on board,
you'll have no regrets".

As they sailed through the deluge
the boat leaked you can bet.
Out jumped Noah and kids,
not afraid to get wet.
But poor Mrs Noah
was left stranded on board,
she'd had no swimming lessons,
she couldn't afford.

She cried "How come I have
such a treacherous mate,
to leave me out here
to a terrible fate?"
Then a handsome young lifeguard
swam out to her aid,
for a dishier fellow
she couldn't have prayed.

She said "I got married
for better or worse,
but now I've found better,

I want a divorce".
Noah, feeling rejected,
had quite lost his spark.
He said "Well perhaps next time
I will build an ark".

By the Roman Road

by David Keogh

A lightening dawn.
Soft mist shrouding the road,
Sharp calls of ducks in pools.
Upon the levee men and beasts.
Men, wearing hard steel,
Nodding heads in one accord.
Wordless soldiers on hard cobbles.
Clattering hooves of laden horses.

There were watchers,
Bearded men in the long grass.
The waterfall restless behind,
Clothing words in secret vengeance,
As foreign voices called a halt.
Legionaries seeking the watering hole.
Too many to challenge.

Drawn back to the sandstone outcrop
The watchers looked on,
Conquerors in their lands,
Taking horses to drink the pool.
Scattering ducks in wild abandon.
And the bearded watchers
Drifted silently away.
Both their quarries triumphant.

Willington Fruit Farm Shop



10 VARIETIES OF HOME GROWN APPLES
LOCAL VEG, HOME PRESSED APPLE JUICE & CIDER,
CHRISTMAS WREATHS FROM 1ST OF DECEMBER

OPEN 7 DAYS 9.30AM - 4.30PM

Winsors, Chapel Lane, Willington, Nr Kelsall, Cheshire. CW6 0PH

Tel: 01829 751216

www.willingtonfruitfarm.co.uk

Merry Christmas

 THE HOLLIES
FARM SHOP

Make your Christmas a Hollies Christmas
Everything you need to make this Christmas fabulous!

Christmas meats from the Butchery



Fresh fruit and vegetables

Cheeses, deli meats & pies

The Hollies Homemade range

Local baked breads, cakes and mince pies

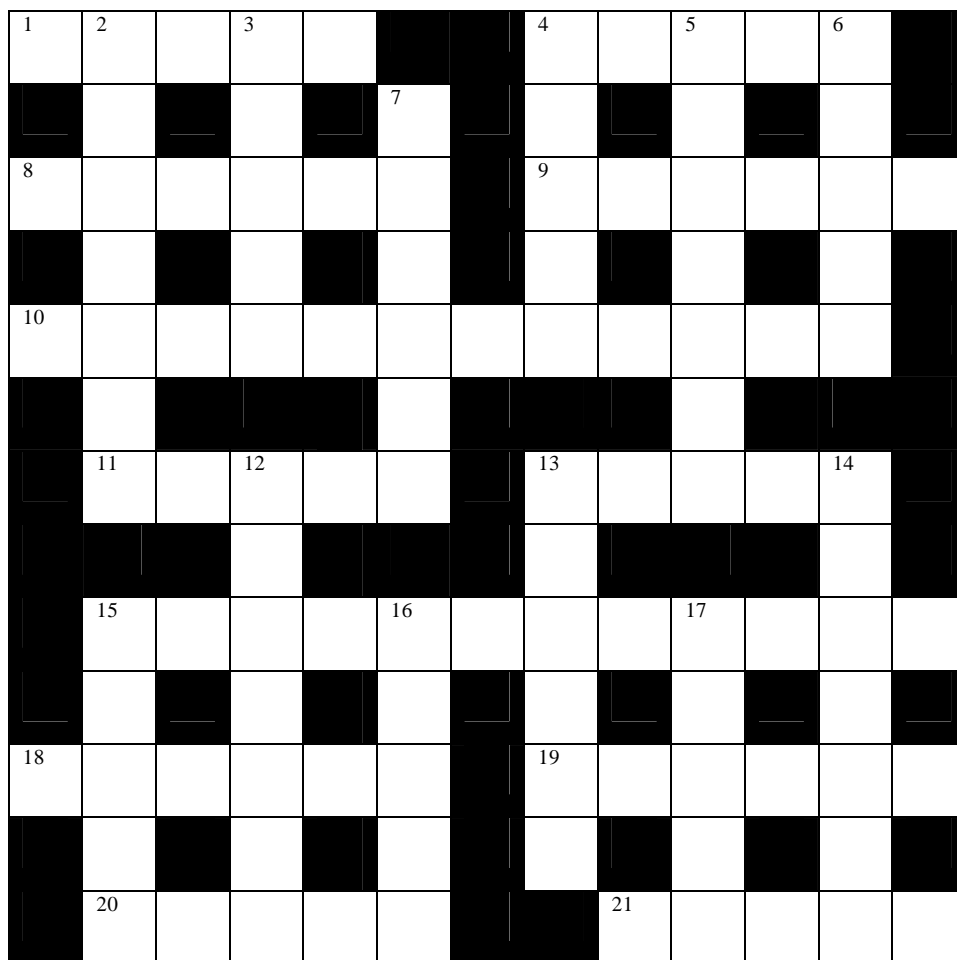
Christmas gifts and cards

Christmas trees, wreathes and decorations

www.theholliesfarmshop.co.uk | The Hollies Farm Shop, Tarporley Road, Little Budworth, CW6 9ES | 01829 760414

Crossword

By Yeti



Across

1. Queen follows stern of ship later. (5)
4. Animal climbs the French wall. (5)
8. Initial dinner of mashed up liver – rubbish. (6)
9. Included in ten assaulted in Creole capital. (6)
10. Series of fraudulent acts have results. (12)
11. Lessen a tantrum. (5)
13. London museum rented out, may care for him or his car. (5)
15. Tiny bird posed for this former coin before strong winds blew up ancient petticoats. (12)
18. Harass animal. (6)
19. Train porpoises. (6)
20. Carry on with meal in Cheshire village. (5)
21. Confused, nears noose. (5)

Down:

2. South African support for medic initially in old far east island. (7)
3. The Spanish sixes, lost king. (5)
4. Dive loses head for sudden move forward. (5)
5. Reverse total I calculate endlessly for light entertainment. (7)
6. Way south is a Greek island we hear. (5)
7. Coating on gnashers in hoopla quest. (6)
12. Little Alexander hasn't left, it's OK. (7)
13. Disappear a bit like a vehicle. (6)
14. Short of money after article, they will be always with us. (3, 4)
15. Burn brightly, loudly on a bad leg. (5)
16. Brave man led north to find long-legged bird. (5)
17. He was white faced in his role as henchman.

Answers at the bottom of page xxx

DELAMERE STORES CHRISTMAS TURKEY, FRUIT AND VEGETABLE ORDERS 2015

**ALL OF OUR TURKEYS ARE FREE RANGE
CHESHIRE-REARED TURKEYS AND AT ONLY £2.99
LB YOU WILL FIND US CHEAPER THAN MOST
SUPERMARKETS**

Weights available are between 8 and 20lb and orders are being taken now. Please order early to avoid disappointment. A £5 deposit is required upon ordering and this will be deducted from the total cost of the turkey on collection.

All of your fruit and vegetables can be ordered and ready to collect with your turkey, taking the hassle away and avoiding the madness of the supermarkets.

We are once again taking orders for our very popular *Toso Prosecco* and at only £8.99 it's great value. It really is excellent and case orders are available. Please let us know no later than December the 8th due to demand.

We will be open on NEW YEAR'S DAY from 7.30 am to 1 pm

Once again I'd like to thank you all for your support. We are one of the very few remaining independent family-run village stores left and I for one am proud of our village still having a shop most of us can walk to. We need your continued support to keep an asset like this in the village our turkey and vegetable orders are an important part of our business during the quieter months of winter.

The village carollers will be singing outside the shop on Xmas eve, it's always a lovely atmosphere. Pop along and have a free glass of sherry.

All vegetables will be freshly delivered from market on the morning you'll be collecting them.

**All the very best wishes from Lee, Suzanne, our two boys and all
the staff at Delamere Stores**

Veg order form on the other side of this page. Feel free to call 01606 882226 for more information or if there's anything at all we can help you with.

DELAMERE STORES CHRISTMAS ORDER

VEGETABLES	QUANTITY*	SALADS	QUANTITY*
POTATOES		ICEBURG LETTUCE	
LEEKs		LITTLE GEM LETTUCE	
CARROTS		CUCUMBER	
CAULIFLOWER		SPRING ONIONS	
SPROUTS		RADISH	
CABBAGE		CELERY	
CABBAGE (white/red)		MIXED PEPPERS	
SWEDE		TOMATOES	
PARSNIPS		FRESH HERBS (specify)	
BROCCOLI		FRESH CHILLI	
ONIONS RED/WHITE			
MUSHROOMS			
CELERIAC			
FRUIT	QUANTITY*	FRUIT	QUANTITY*
APPLES (cox)		SATSUMAS	
APPLES (gala)		ORANGES	
APPLES (pippin)		LEMONS	
APPLE S (crispin)		LIMES	
APPLES (bramley)		FIGS	
BANANAS		DATES	
GRAPES GREEN/DARK		COCONUTS	
OTHER REQUIREMENTS			

*Please specify quantity in either weight or in the number of mouths to feed