

Delamere and Oakmere News



Number 25

Summer 2012



In this issue:

- **The Queen's Diamond Jubilee Celebrations, as they happened**
- **Parish Plans**

Forthcoming events

Church services

St Peter's Church, Delamere

"Back to School" special holiday family service, Sunday 26th August at 10.30am (there will be no Sunday School)

Oakmere Methodist Church

All visitors are welcome to join us for worship on Sunday mornings at 10.45am.

Delamere and District Golden Club

August 29	Day out on Mersey Ferry - meet at Community Centre 10am etc.
September 5	Delamere Derby
September 19	40 th anniversary Birthday Party
October 3	Fun Day!
October 17	Harvest Festival
October 31	Lunch & Speaker: Alan Hayhurst
November 14	Coach Trip and Shopping
November 28	Bingo and Beetle Drive
December 12	Christmas Party Lunch with Tarvin Carol Singers

All ages welcome!

For all queries regarding events and membership please call the Secretary June Budd on 01606 888117

W.I.

August 14	Garden party 2-4pm at Kay's.	Quiz, Refreshments, raffle, bring and buy.
September 11	Jewellery (Mrs Curry)	Group competition (TBA)
October 9	A musical evening (Mrs C Docherty)	Musical box
November 13	Annual General Meeting	
December 11	Christmas Party	Home made Christmas decorations

Meetings are held at 7.30pm, every second Tuesday in the month except for August, at Delamere Community Centre

Delamere Forest

Discover wildlife, build dens, work with willow, volunteer....

August 1, 8 & 15	Minibeast Madness	10.30 – 11.30am or 1.30 – 2.30pm	£2 per child
August 2, 9 & 16	Den Building	10.30am – 12pm or 1.30- 3pm	£2 per child
August 3, 10 & 17	Bushcraft	11.00am-12.30pm	£3 per child
August 5	Volunteer Day	10am – 4pm	
August 13	Bat Walk	7.30-9.00pm	£4.50 per child
August 24	Moth Trapping	7.45pm-10.30pm	£4 per person
September 15	Fungal Foray	10.00am-3.00pm	£4.50 per person [early booking recommended]
September 16	Volunteer Day	10am – 4pm	
December 1	Astronomy	7.00-9.30pm	£4.50 per person

Booking is essential for all events and activities. Children must be accompanied by an adult at all times.

For Volunteer Days please contact jeni.west@forestry.gsi.gov.uk or ring 01606 884942

For more information and booking on all activities call the Information Centre on 01606 889792
forestry.gov.uk/delamere

DELAMERE STORES

13 Station Road, Delamere, Northwich, Cheshire CW8 2HU

Tel: 01606 882226

A traditional village store offering an extensive range of fresh produce (much of it locally grown), wines and beers.

The store has a wide selection of delicatessen products, an in-store bakery, and a full menu of fresh hand-made sandwiches which are prepared as you wait.

Come and visit us.

WE ARE OPEN:

Mon – Fri 6.30am – 7.00pm

Sat 6.30am – 6.00pm

Sun 7.00am – 5.00pm

Get closer to the Forest this summer - there's lots going on.

Events

There has been a packed program of events this summer, including three Live Music concerts that were a huge success, and the ongoing volunteer days, the ever popular fungal forays, wildflower walks and more. During August we'll be running **Minibeast Madness, Den Building and Bushcraft** sessions, amongst others, for children.



After our success last year we have been holding our **free Forest Discovery Days**, with another **on Sunday 30th September, 11am-3pm**. Come along to meet our rangers, and find out more about our fantastic forest. There will be wildlife walks, history walks, Forest Operations, Forest Nursery tours, children's activities and self-led trails (*charges may apply for some activities*). And then you will be able to learn about the night sky at our **Astronomy Day on Saturday 1st December. 7pm-9.30pm**.

For more information and to book an event on-line visit www.forestry.gov.uk/delamere

Extended opening hours at the café

Delamere cafe have extended their opening hours for the summer to take advantage of the light evenings. Usually open every day from 9am to 5pm, the **Cafe will now stay open until 8.30pm (or dusk if earlier) every Thursday and Friday throughout the summer.**

Much more than just cycle hire

Spaces are still available on the Sept/Oct HealthCycle course, which now runs from Tuesday 11th September until Tuesday 16th October. HealthCycle is a regular programme of gentle cycling activity to improve general health and fitness. The course offers a 1 hour session every week.

No previous cycling experience is required, and you have the choice of bringing your own bike or hiring one. To book or for further information please email Tony on info@tracs-uk.co.uk or call 07949 088477.



Letter to the (former) editor...

Dear Robin

There it was in capital letters at the top of the front page of Issue No. 24, "THE FINAL Delamere and Oakmere News. We couldn't have that, so here it is, Issue No. 25. Thanks to you Robin, for all your efforts in developing the newsletter in the first place (back in 2005), for organising the printing (Vale Royal Council and now Cheshire West and Chester are to be thanked for that), for finding people to deliver it (very many thanks to all of them), and not least, for all the imagination and hard work you put into producing each of the first 24 issues. And thank you passing all of that on and helping me to organise this one.

It's a hard act to follow. I don't expect to match it, but at least we still have a newsletter. It looks a little different, with a new font for the title, but it follows much the same format, with a list of forthcoming events, a range of news items, and the occasional feature article. In this issue we have got pictures of the community events for the Queen's Diamond Jubilee, and an overview of the parish planning initiatives that have been taking place in Oakmere and now Delamere.

Future issues will, I hope, include plenty more of the contributions from you that we have enjoyed so much in the past. Meanwhile, enjoy your "retirement"!

Very best wishes

ed.

Update on potential mains gas supply

Many thanks to those who filled in the form in the previous newsletter registering an interest in getting mains gas in the future. I have given the number of responses to National Grid, but will not send them your detailed information without guarantees that they won't pass it on to advertisers.

At the end of May we heard that Wainhomes, who are developing the old Fourways site in Oakmere, had agreed with a Utilities Infrastructure Provider, (UIP), to extend the mains gas pipe from Sandiway along the A556 to their development. My assumption is that this UIP will contact properties along the A556 and just off, eg. Crabtree Green and Waste Lane & Chrimes Drive etc., to enquire

whether they would require a Mains Gas connection. Contact has been made with this UIP over this assumption but they have not yet replied.

I am also in contact with a third company as well, suggesting that eventually the Wainhomes pipe be extended down Abbey Lane, along Station Road, into Frith Avenue, up Eddisbury Hill and maybe along Stoney Lane to the School and Watling Drive. These pipes would then serve the great bulk of Delamere properties and the remaining Oakmere properties not already covered up to the Wainhomes site. This company, who have worked before with the Wainhomes UIP, showed great interest in this, but has not yet replied in detail despite several promises.

I am also still talking to National Grid but various complications make me less optimistic than I was before that mains gas will soon come to Delamere. However, I will keep you informed regularly through the newsletter of any further progress.

Dr. Bob Clipperton - 75 Station Road.

National Lottery comes to Delamere

Delamere Stores has finally got a national lottery terminal! It was installed on 26th July.

Editorial

Delamere and Oakmere News is published on a semi-regular basis three or four times a year. The next issue is planned for November/December 2012, when we will be looking forward to Christmas.

Articles, ideas for articles, news of recent events or forthcoming ones, advertisements, and any other contributions relevant to Delamere and/or Oakmere are all very welcome (inclusion subject to editorial discretion).

The newsletter is available in **full colour** as a PDF file (contact me if you would like a copy).

Contact:

do_newseditor@yahoo.co.uk
01606 882183

ABBNEYWOOD

ESTATE

Abbeywood Estate offers relaxed dining in our very own Garden Café. So rest awhile and enjoy a gourmet lunch, slice of home-made cake and light refreshments.

We use home-grown and locally-sourced premium produce wherever possible. This includes:

Free-range eggs from Abbeywood hens.

Vegetables, fruit and herbs from our vegetable garden.

Ethically-sourced meats.

It's all about us providing you with simple, healthy sustainable food.

There are nine garden areas, each with its own distinctive character and themed planting:

**Glasshouse Borders
Tropical Garden
Pool Garden
Pergola Walk
Chapel Garden
Jane's Garden
Vegetable Garden
House Terrace
House Frontage
Arboretum and Woodlands**

Opening hours:

Sunday	9am – 5pm
Monday	9am – 5pm
Tuesday	9am – 5pm
Wednesday	9am – 5pm
Thursday	9am – 5pm
Friday	Closed
Saturday	Closed

Abbeywood Estate, Chester Road
Delamere, Cheshire CW8 2HW
T: 01606 889477

Email: info@abbeywoodestate.co.uk
Web: www.abbeywoodestate.co.uk

The Rector's induction

The induction of Rev. Elaine Ollman as Rector of Delamere took place at St. Peter's Church on Thursday 24th May.



The ceremony was led by the Archdeacon of Chester and the Bishop of Birkenhead, pictured here meeting parishioners with the Rector and her husband Brian.



photos: Gloria Ackerley

Letter from the Rector

Dear Friends

Thank you for your warm-hearted welcome to the community of Delamere. Brian and I have only lived here a short time but already 'The Rectory' feels like 'home'.

A big thank you to all who worked so hard and to those who supported St Peter's Garden Party on 7th July there was a wonderful community atmosphere and we were certainly blessed with good weather. Thank you to Mr Docking (Headteacher) and all the staff of Delamere School for allowing the event to take place on the school field.

2012 (despite the rain!) is proving to be a year of great sporting events – Euro 2012, Wimbledon, and the Open Golf and of course in a matter of days the Olympic and Paralympic Games. The founder of the Olympics Pierre de Coubertin famously stated 'The most important thing in the Olympic Games is not winning but taking part.' The Olympians have trained hard and persevered, some will achieve their dream of an Olympic medal, but for the majority it will indeed be that the taking part is important not the winning.

In the Bible, the writer of Hebrews compares everyday living with running in a race and says 'Let us run with perseverance the race marked out for us. Let us fix our eyes on Jesus.' Remember when the race of life becomes an uphill struggle or is filled with obstacles or is more like a helter-skelter - pause, and turn your thoughts to Jesus, he promises to run with us to help, support and encourage us and he promises 'Never will I leave you: never will I forsake you.'

We warmly invite you to worship with us at St Peter's, each Sunday there are services at 8am and 10.30am and on the 2nd and 4th Sunday at 6.30pm. On the 2nd Sunday of each month at 10.30am, we have a service for all the family. On August 26th there will be a special service at 10.30am called 'Back to School' – this is not just for children but is for all ages from 0 to 99!

Do contact me by telephone or email if you would like me to visit or pray for you.

Brian joins me in sending good wishes and blessings

Elaine Ollman

The Rectory, Delamere
rectorstpeters@btinternet.com
01606 88 2184

Bible reference: Hebrews 12:2; Hebrews 13:5



J&S Oakmere

Motorcycle Megastore

ONE OF THE BIGGEST MOTORCYCLE AND ACCESSORIES STORES IN THE UK!

J&S Accessories Ltd was started in Northwich nearly 30 years ago, and now has twelve stores across the UK. The Northwich store moved to Oakmere in April.

- **Large selection of new and used bikes**
- **Main Kawasaki dealer**
- **Massive selection of brands**
- **Service and parts department**
- **All new café**

J&S Accessories Oakmere is a Kawasaki dealer with a motorbike showroom, and extensive clothing, helmet, boot and ladies departments amongst others. The store has a large customer carpark to the rear of the building.

On the A556 Chester Road

**Oakmere,
Northwich,
Cheshire,
CW8 2HB**

Telephone: 01606 810800

Website: www.jsaccessories.co.uk

Opening Hours

Mon-Fri:	9.00 - 18.00
Sat:	9.00 - 17.30
Sun:	10.00 - 17.00

Community Centre News

The Delamere Community Centre (which also serves Oakmere and surrounding areas) now boasts a new sign above the door, together with a matching sign on Station Road.



The first of these was kindly funded by Rosemary and Albert Powell. The second was kindly donated by David Haigh, owner of Fourways, as the restaurant's legacy to the village when it closed, and was erected courtesy of Harry Rowlinson of Abbey Wood Estates.



The logo on both signs is the Delamere Horn, a hunting horn that the Chief Forester was required to use when the Earl of Chester was in the forest for the chase. The original sixteenth-century silver horn is on display in the Chester Grosvenor Museum.

Refurbishment: In the next few weeks we will have a display board available with the refurbishment plans for the kitchen, toilets and hallway.

Watch this space for details of the Community Association's 40th anniversary celebration party that will be held later this year.

New activities and ideas.....

Would you like to start up a new activity or club based in the Community Centre? Or do you have any ideas that you would like to see developed? *Contact Paula Cockroft (01606 889741, paulacockroft@yahoo.com) or Winston Sherman (01606 889411, winston.sherman@sherman.me.uk)*

Delamere Thursday Badminton Club

The club is offering 'badminton taster sessions' on 16th, 23rd & 30th August, 7.00-8.00 pm at Delamere Community Centre.

£2.00 per session, 1st session free.

We are a friendly social club with a team in the Chester and District Badminton League.

New players welcome.

Further details please contact:
Jane Wright on 01606 882708

Fancy a game of snooker?



Or maybe billiards? The Community Centre has a dedicated snooker room with an excellent table, which is not used as much as it might be. If you are a resident of Delamere, Oakmere or one of the neighbouring parishes and would like to play regularly, or even play in a league, please contact Paula Cockroft (01606 889741) or Winston Sherman (01606 889411) to discuss your interest.

Community Centre activities and contacts

Booking Secretary	01606 882114
Badminton (Tues 10 - 12am)	01606 883027
Badminton (Thurs evening)	01606 882708
Billiards/Snooker	01606 889741
Bingo (Sat 7.30)	01606 853861
Prize Bingo (every 4 th Tues)	01606 853861
Bowls (outdoor)	01606 889174
Bowls (indoor)	01829 760420
Bridge (Mon)	01606 882003
Bridge (Wed 7 - 10pm)	01606 888391
Golden Club	01606 888117
Guides	01928 789010
Over 60 Keep Fit (Wed)	01606 882183
Whist (Thurs pm)	01606 888889
Whist (Fri pm)	01606 888889
WI (every 2 nd Tues, not Aug)	01606 889174

Fourways housing development

Work has commenced on the former Fourways site for a new housing development by Wain Homes.

There will be a total of 36 properties, of which 25 will be detached houses for full market price purchase (14 four-bedroom and 11 five-bedroom), 5 will be three-bedroom properties for discounted purchase, and 6 will be two-bedroom apartments for 'Affordable Rent'.

The affordable rent apartments will be managed by Chester & District Housing Trust. Local people who meet the normal affordable housing criteria will be given priority consideration. To register an interest contact:

Chester & District Housing Trust on

0808 100 7701

or register online at

www.trusthomechoice.co.uk

your local

PIANO TEACHER



Lessons from beginners to Grade 8 standard

Composition & Improvisation included

STEPHEN LUCAS

A.T.C.L.(Mus.Ed.), Cert. of Mus.Ed.

Performers Cert.

Abbey Lane, Delamere

Tel. No.: 01606 881631

SWP ELECTRICS LTD

YOUR LOCAL ELECTRICIAN

- ALL DOMESTIC ELECTRICAL WORK CARRIED OUT •
- TESTING AND INSPECTION OF PROPERTIES •
- LANDLORDS' CERTIFICATES •

NO JOB TOO SMALL, WE DO THEM ALL

- ☒ PROMPT RELIABLE SERVICE
- ☒ FREE ESTIMATES
- ☒ INSURANCE BACKED GUARANTEE

Tel **01928 740415** or **01928 740237**

Email: swpelectrics@btinternet.com

Stephen Warburton

PART P DOMESTIC ELECTRICAL
INSTALLER APPROVED

REGISTERED MEMBER
 ECA

ELECSA
Approved Contractor

WILKINS ESTABLISHED 1895 **CHIMNEY SWEEP**

- TRADITIONAL BRUSH AND VACUUM SERVICE
- NESTS REMOVED
- CAGES, CAPS AND COWLS FITTED
- SWEEPING CERTIFICATES ISSUED
- PROFESSIONAL, CLEAN SERVICE
- FULLY INSURED
- POLICE CHECKED
- CARD PAYMENT ACCEPTED

01928 897 294



wilkinschimneysweep.co.uk/
westcheshire

Delamere Parish Council News

Letter from Alan Knowles, Chairperson

Hello my name is Alan Knowles and I am the Chair of the Parish Council until next May. I would like to say thank you to Steve Roberts the outgoing chair for his enthusiasm and commitment over the last 12 months.

Parish Council Vacancies

We had two vacancies on the Parish Council and I am pleased to say that these have now been filled. The PC would like to welcome Clive George and Paula Cockcroft and we are sure that they will bring with them a wealth of experience and expertise to the council.

Parish Plan

A public meeting was held on Monday 30th July at Delamere community centre. It was a fantastic turnout, especially given the holiday period and the Olympics. Those in attendance decided to go forward and develop a parish plan and a steering group has been set up to take this forward. This will be chaired by Barry Green, Dr Bob Clipperton will be the treasurer. Please see other articles within the newsletter for further information. I would like to say a big Thank You to all members of the public who took the time to attend and give valuable input into the evening, and also to those of you who distributed the leaflets advertising the event.

Housing needs survey

It is envisaged that a housing needs survey will be distributed to all households in Delamere during the early autumn. Please take the time to complete and return the form so that we may gauge the need for low cost/affordable housing within the parish. A potential small plot of land has been identified near to Delamere church for this need. PLEASE note that NO planning application has been submitted at this stage. If an application is forthcoming in future months then a full public meeting will be held as with previous applications.

Parish Boundary Changes

There is currently a review of town and parish governance being undertaken by Cheshire West and Chester Council which could, among other things, potentially impact on parish boundaries. Areas currently being looked at are Kelsall, Tarvin, Delamere, Oakmere,

Utkinton and Willington. Information and a questionnaire will be sent to all households later this month, when residents will be able to make comment on any proposed changes.

Alan Knowles, Chairperson Delamere Parish Council.

Another Green Flag for the Little Wood

The Little Wood, next to Bowyer's Waste in Oakmere, has again achieved the Green Flag Award (the benchmark national standard for parks and green spaces). The new flag was presented on 6 August.



A circular walk through the wood, including a boardwalk across the wetland area, provides easy access to a rich variety of habitats and wildlife.

Delamere Post Office Services

Don't forget that Delamere has still a post office, open two days a week.

Use it or lose it!

The service is provided as an "outreach" Post Office on Wednesdays and Fridays in the *Community Centre, Delamere*. You can post parcels, buy stamps, draw cash from your bank account (free of charge), and use other Post Office services.

Opening hours:

Wednesdays 9.30am to 2pm

Fridays 9.30am to 1pm

St. Peter's garden party at Delamere school

Photos Gloria Ackerley, ed.



The school's Jubilee garden



Who's winning? The football tournament



Newfoundland dogs at the garden party



That's enough of pulling those carts - now it's your turn

Proposed new footpath and bridleway

Mid-Cheshire Bridleways is planning to apply for a grant from Natural England to develop a new permissive footpath and bridleway linking Delamere Forest to the Whitegate Way. From Whitegate Way the proposed route would go to Hornby's Rough (an area of Forestry Commission woodland to the north of Crown Farm quarry), which currently has no public access. From there it would run along the boundary between Crown Farm quarry and Delamere golf course, around the northern and western sides of Marley lake, and across fields to join Station Road near the junction with Frith Avenue. This last section of the path would provide additional access to Footpath 5, the public right of way linking

Golf Course Road to Farm Lane. Details of the proposal that have yet to be finalised include the route that horses would take from Station Road to the forest, and possible future access to other areas around Crown Farm quarry that Cheshire Sands propose to restore. The proposals have been discussed with Oakmere and Delamere Parish Councils, who have raised no objections.

For further information, or to give any comments or suggestions, contact Tony Overland (tel: 01606 888128, email: tony_overland@yahoo.co.uk)

The Queen's Diamond Jubilee Celebrations

The Diamond Jubilee weekend's events included a celebration at the school, a picnic in the forest (organised by the Forestry Commission), a street party in Willington and a Family Fun Day and Craft Fair at the Community Centre.

The forest "picnic" nearly got washed away by the rain, but the sun broke out the next day for

the Community Centre event, which had a splendid turnout of about 160 people. Attractions included a range of children's games, a bouncy castle, face painting, fancy dress and painting competitions, a royal quiz, a raffle, tombola, a cake stall, and a range of refreshments including hot food provided by Delamere Stores. To mark the occasion the Rector raised the flag for the first time on the flagpole donated by Delamere Parish Council.

Jubilee "picnic" in Delamere forest

Photos Don Wilson, ed.



And the band played on...
the Cheshire Training Band take cover



Watering-in... Alan Knowles and the band plant a
Jubilee tree



Forester Denny Foster and fundraiser
Andy Bell
plant another Jubilee tree



Can you spare a bone? Bess
dons a Jubilee hat to give Andy
a helping paw



Denny and Bess finish the job

Jubilee Family Fun Day and Craft Fair

Photos Gloria Ackerley, Paula Cockroft, ed.



Raising the flag - the Rector, with a little help from Winston Sherman and Paul Jones



The new flagpole's commemorative plaque



Robin and Paul plant a Jubilee tree - donated by the Forestry Commission



Raffling the flower show



Steve Lucas plays



The WI cakeshop



The bouncy "Windsor Castle"



Goal!



Making up



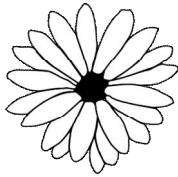
Prizes! - the Rector presents



What did I do to deserve this? - the Rector in the stocks

Support St Luke's (Cheshire) Hospice - join one of our events!

Autumn Plants and Christmas Cards



Order your autumn bedding/basket plants from us **NOW** and help us to raise funds!

Come to our Christmas Card / Plants launch on Fri 14 and Sat 15 Sep at the Hospice (CW7 1BH).

If you'd like to order cards beforehand, phone **Rachael Knight** on **01606 555687**.

For a plant order form, phone **Liz Wells** on **01606 555816**

Dame for a Laugh

Gents, are you brave enough to take up the challenge?

Calling all men's groups, we need you!

5K sponsored / bucket collecting men's dress 'dame' walk.



Taking place in Middlewich, starting from the Salt Cellar Pub and walking through Middlewich

Sat 22 Sep, 12.30 pm start

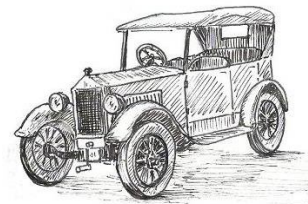
Phone Rachael Knight on 01606 555687

Register now:
www.dameforalaugh.co.uk

Driving Through the Ages

Sun 30 Sep

Vintage and classic vehicle drive. **All ages of vehicles welcome.** £15 per vehicle (including a delicious bacon sandwich and cuppa for 2 people).



50 mile drive. Audlem to Abbeywood (Delamere). **Limited places, need to be booked in advance.** Spectators welcome at Abbeywood (CW8 2HW) (£5 adult admission)

Phone Liz Wells on 01606 555816

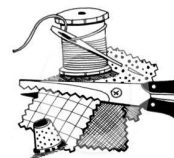
Craft Workshops at Abbeywood Estate, Delamere

Half day and full day craft workshops, starting from £35. **Tues 25 and Wed 26 Sep**

Sessions include a light lunch and a glass of wine in Abbeywood's lovely café

Phone **Rachael Knight** on **01606 555687**

Email rachael_knight@stlukes-hospice.co.uk



Limited places!

St Luke's (Cheshire) Hospice, Grosvenor House, Queensway, Winsford CW7 1BH

More details & events at: www.stlukes-hospice.co.uk

Phone fundraising on 01606 555687 or 01606 555816

Registered Charity Number 515595



St Luke's has to raise £6,500 per day. All proceeds from these events go towards direct patient care.

Parish Plans

As Alan Knowles mentioned in his letter on page 10, Delamere Parish Council has initiated the process of developing a Parish Plan for the village, otherwise known as a Community-Led Plan. Oakmere Parish Council started a similar process last year, as reported by Diane Hodgson in the article below. A joint meeting of the two councils is being arranged, to share experiences and co-ordinate future activities.

A key issue discussed at the Delamere public meeting, and in earlier Oakmere meetings, was whether to develop the plan under the established framework for Parish Plans and Town Plans, or under the new framework for Neighbourhood Development Plans that was introduced in the 2011 Localism Act. In both parishes it was decided to adopt the established Parish Plan approach. Once the plan has been developed it would be possible to use it as the basis for a Neighbourhood Development Plan (often known as a Neighbourhood Plan) if this proves to be desirable at some point in the future.

There is a degree of overlap between a Parish Plan (PP) and a Neighbourhood Development Plan (NDP) but the two are quite distinct. The main difference is that NDPs are concerned mainly with land use and development issues, whereas PPs focus mainly on everything else. NDPs are a statutory part of the planning system, whereas PPs have no such legal status. Instead, a PP serves as a focus for the community's own actions to maintain and improve the neighbourhood. The neighbourhood covered by a plan can include more than one parish, or parts of parishes, although for NDPs the area chosen must be approved by the Local Authority. An important difference is that NDPs are more expensive to produce. An important similarity is that both types of plan require extensive consultation and involvement of the whole community. **If you would like to get involved** contact the relevant Parish Clerk at:

*delamereclerk@yahoo.co.uk, or
oakmerepc@gmail.com*

About 60 villages and towns in Cheshire have already developed a Parish Plan or Town Plan. Experience with Neighbourhood Plans is much more limited. Nationwide, about 230 communities have been selected as "frontrunners" for developing NDPs, with financial assistance from central government.

None has yet completed the process. Eight of the frontrunners are in Cheshire, of which four are in Cheshire West and Chester (Winsford, Neston, Tattenhall and Tarporley).

The Campaign to Protect Rural England (CPRE) has produced a comprehensive description of these and other local planning processes, from which the extracts in the box are taken.

Parish Plans and Town Plans

Parish and Town Plans are produced primarily by local communities, albeit sometimes with procedural advice, sometimes technical advice. They generally cover almost everything except direct land use planning issues; for example open spaces, health, safety etc., but inevitably overlap at times with land use planning. They focus on generating local action plans and local projects, for example open space maintenance. Parish and Town Plans are very well established; some 4,500 have been produced in recent years, mainly by rural communities.

Neighbourhood (Development) Plans

A Neighbourhood Development Plan (NDP) is a statutory plan prepared by the local community. Neighbourhood Development Plans are concerned only with land use and development issues. They must be 'in conformity' with higher level plans, i.e. national planning policies and authority-wide Local Plans. This means that aspects such as housing numbers, perhaps even sites, will most often be set by the Local Plan and the NDP must work within those parameters (it can only suggest more development, not less). The NDP, which must be done to demanding standards, can then determine most of the detail for changes in its area (not just for sites) once it has been through examination and has secured support through a referendum. If the referendum shows support, the NDP must be formally adopted by the local planning authority.

Source: "Planning and Localism: Choices and Choosing", CPRE Gloucestershire, <http://www.cpreglos.org.uk/localismprint.pdf>

Oakmere Community-Led Plan

In July 2011 Oakmere Parish Council held a drop-in event to gauge the views of local people on its ever increasing development pressures and to consider the potential for a community-led plan for the parish. The results of a questionnaire on the day then

confirmed there was an appetite for the development of a community-led plan.

Being a small parish with less than 250 households, the Parish Council has just seven councillors who all volunteer their time, plus a part time clerk who is employed for just twenty hours a month. It was recognised this work would require additional capacity, new skills and extra time to that already devoted to normal Parish Council business. There was a sense of urgency in view of the unprecedented interest that was being shown by developers in Oakmere. Further discussions were held with Cheshire West and Chester Council who generously agreed to provide some professional support. Taylor Young were appointed to assist and facilitate the process.

A community briefing took place on 3rd April 2012 to confirm the key issues and opportunities. Everyone from the parish was invited and the key issues were reaffirmed. The significance of recreation and the environment were emphasised by those who attended. At the end of the session local people were invited to become further involved in the plan and individuals signed up for a visioning workshop which took place on 12th May 2012. Attendees included residents, landowners, local businesses, parish councillors, council officers and other professional specialists. The day included a briefing to share baseline evidence; a neighbourhood planning game to explore and prioritise emerging issues and opportunities; theme based workshops; a review of locally emerging site development proposals and the chance to explore ambitions for the future.

A further drop-in event was then held in the Delamere Community Centre on 31st May 2012 to which everyone in Oakmere was invited, so as to have the opportunity to share these ideas. There was a pleasing and significant degree of consensus in the feedback.

The Oakmere Community Led Planning Framework is now, as a result of all this valuable and appreciated community participation, nearing completion and addresses the following themes:

- Landscape
- Recreation and tourism
- Housing
- Community facilities
- Employment

• Movement

For each of the above, the document covers proposals for potential change in the Parish and considers the current formal planning context, but focuses on new planning policies and offers supporting commentary for the local context. It also includes outline design guidance to ensure development is appropriate to the area and of a high quality.

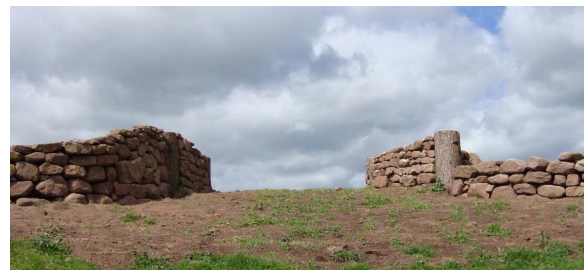
The finalised Framework should be available in the Autumn. If you are interested in viewing it or getting involved in further work please email the Oakmere Parish Clerk Amanda Jackson on: oakmerepc@gmail.com

Diane Hodgson

Eddisbury archaeology

The Habitats and Hillforts project is running another volunteer training dig in the area in August, to excavate one of the Seven Lows bronze age barrows off Fishpool Lane.

This follows the excavations on Eddisbury Hill last summer, when the original postholes were unearthed and then re-used in a reconstruction of the hillfort entrance.



Project volunteers have also been busy waymarking footpaths on and around Eddisbury Hill and Kelsborrow Hill, as well as other Cheshire hillforts.

Contact: Dan Garner
01244 975915

dan.garner@cheshirewestandchester.gov.uk