

Delamere and Oakmere News



Number 26

December 2012



In this issue:

- **At last! - a website for Delamere and Oakmere**
- **Community Centre refurbishment**
- **Review of parish boundaries - tell us what you think**

Forthcoming events

Church services

St Peter's Church, Delamere

Sunday 23 rd December	10.30am	Family Service with the children's Nativity
	6.30pm	Carols and Readings by candlelight
Monday 24 th December	4pm	Christingle
	11.30pm	Holy Communion
Tuesday 25 th December	10.30am	Family Holy Communion for Christmas (please bring one of your gifts to show everyone)

<http://www.delamerechurch.blogspot.co.uk/>, <http://www.achurchnearyou.com/delamere-st-peter/>

Oakmere Methodist Church

The church fellowship meets together every Sunday morning at 10.45am, followed by refreshments. All are welcome to come and join us.

<http://oakmeremethodist.org/index.htm>

Delamere and District Golden Club

December 12 Christmas Party Lunch with Tarvin Carol Singers

All ages welcome!

For all queries regarding events and membership please call the Secretary June Budd on 01606 888117

W.I.

December 11	Christmas Party	Home made Christmas decorations
January 8	Liz Weston	Humorous talk on Denman College
February 12	Elaine Ullman, the Rector	Fragments
March 12	Mr Farr	Orang Utans

Meetings are held at 7.30pm, every second Tuesday in the month except for August, at Delamere Community Centre

Delamere Forest

Tree sales begin on Wednesday 28th November and end on Wednesday 19th December from 9am - 5pm (open until 8pm on Friday 7th and 14th December).

The grotto will be open every weekday from 3-5pm, and at weekends from 9am - 5pm (last entry 4pm).

Schools, nurseries and pre-schools can book to visit Santa in his grotto during the week. For further information and to book please visit www.delamere-forest.co.uk.

For Volunteer Days please contact jeni.west@forestry.gsi.gov.uk or ring 01606 884942

For more information and booking on all activities call the Information Centre on 01606 889792
forestry.gov.uk/delamere

Christmas Shopping and Festive Fun

Santa opens his Grotto
12 noon Sat 17th Nov
Grotto open 11.30 - 4.30pm
each weekend plus Xmas
Eve 11am - 2pm



Late night shopping til 7pm
Every Thurs in December

For gorgeous gifts for your friends and family, your home or yourself, visit Blakemere with its boutique style shops and Christmas Markets during the festive season.

Markets - Saturday & Sunday 8 & 9th and 15 & 16th December. 10am-5pm. Free admission



Visit Santa in his Toy Workshop Grotto nestled in our Festive Square with magical snowflakes and small fair rides, before riding our Santa Express around Blakemere. Choirs and bands perform carols in the courtyard - see website for details.



Blakemere
at Christmas

Open daily 10am - 5pm

Chester Road, Sandiway, Northwich, Cheshire CW8 2EB
01606 883261 www.visitblakemere.co.uk



Christmas in the Forest

Delamere Forest is set to be transformed into a magical winter wonderland again this Christmas, from Wednesday 28th November to Tuesday 18th December.

For the first time ever families can visit Santa and choose their Christmas tree *after school* as the Christmas event will be open *to the public from 3pm Monday to Friday, and two late night Fridays, 7th and 14th December until 8pm, as well as throughout every weekend.*

The Christmas event will be held at the Whitefield site, featuring real Christmas tree sales, Santa's Grotto, land train, and a magical Victorian street fair offering hot food and a licensed bar.

The Land train will run from 3pm daily, and throughout the weekend, taking families on an enchanted trip through the ancient woodlands.

Schools nurseries and pre-schools can book to see Santa in his grotto during the week. For more information visit: **www.delamere-forest.co.uk**

Christmas gift ideas

The **Delamere Forest Discovery Pass** makes an ideal Christmas gift for friends and family. The annual pass entitles the pass holder to 12 months free car admission, seasonal e-newsletters and exclusive offers. To purchase on line visit www.forestry.gov.uk/pass

Delamere Forest 2013 Summer Concert Tickets

The **2013 Live Music concerts** will be announced in the coming months, with the first tickets going on sale in early December.

For more information and to buy tickets visit:

www.forestry.gov.uk/music

Foreword

Autumn has come and gone, and Christmas is on the way, but before we settle down for winter here is a reminder of what the leaves looked like when they were still on the trees. The pictures in this issue leave a lot to the imagination in black and white, but a full colour version is now available too. Yes, Delamere and Oakmere have (or very nearly have) our own website! It may even be up and running by the time you read this, but if not, we can send you a colour copy of the newsletter by email.



You will find more information about the website below, along with news on quite a few other things that have been happening in the past few months. These include progress with the refurbishment of the Community Centre and a long list of things in Tony Overland's catching-up letter from Oakmere Parish Council. We have got news on several items to which you can make a direct contribution yourself, including parish planning, broadband access, the safety of pedestrians on the Delamere station bridge, the newly formed Sandstone Ridge Trust, and the review of parish boundaries being undertaken by Cheshire West and Chester Council.

It is particularly important that everyone in Delamere and Oakmere give their views on the last of these, as it could have a major influence on our future development. Do you think of Delamere and Oakmere as a single community or as two separate communities? Perhaps a bit of each, but how much of each? And what about community relationships with other neighbouring parishes? Cheshire West and Chester have said that they will consult local people after they have prepared their own recommendations, but it might be a good idea to tell them what we think before they prepare them!

About the newsletter

Delamere and Oakmere News is published on a semi-regular basis three or four times a year. The next issue is planned for early Spring.

Articles, ideas for articles, news of recent events or forthcoming ones, advertisements, and any other contributions relevant to Delamere and/or Oakmere are all very welcome (inclusion subject to editorial discretion).

The newsletter will be available in **full colour** on the soon-to-arrive Delamere and Oakmere Community website. You can also get a PDF file of the colour version by email (contact us if you would like a copy).

Contact:
do_newseditor@yahoo.co.uk
01606 882183

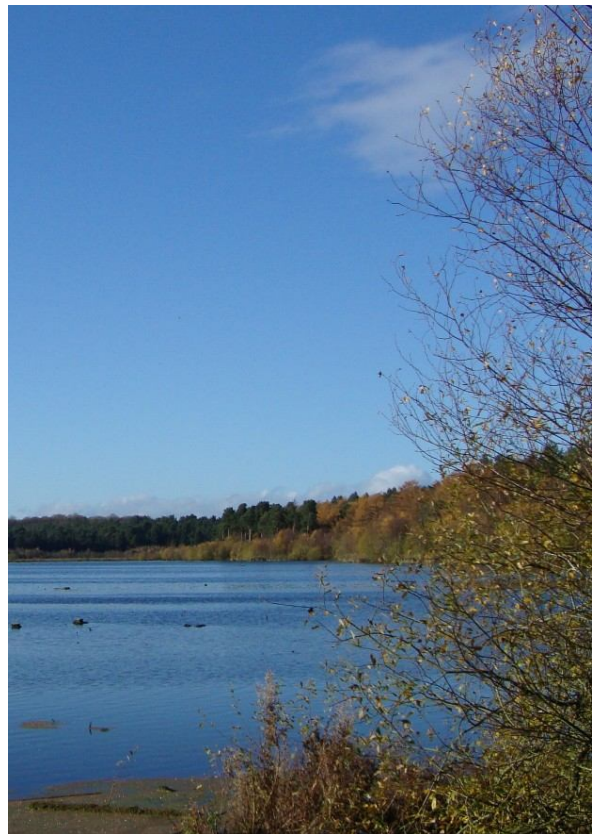


Photo competition!

Not much of a competition - we just want your photos for the newsletter. The first prize will be your photo on the cover, with the runners-up appearing elsewhere in the next issue.

Letter from the Rector

Advent 2012

Dear Friends

It hardly seems any time at all since I was asked to write a piece for the edition of the Delamere & Oakmere News that was to be distributed shortly before we moved into the Rectory and now we have been here for six months!

When we moved in the trees were coming into leaf harbingers of the summer to come and now those same trees are almost bare the brilliant yellow and copper leaves swirling in piles on the church driveway. The summer never really came and now winter is upon us. The cold nights, frosty mornings and icy roads will soon be here again.

But as well as winter we have Christmas – we celebrate once more the birth of Jesus – God's own Son come to earth to show us what God is really like. I have been choosing the carols that will be sung at St Peter's at the Christmas services; the words of the last verse of one of the carols that will be sung on 30th December say:

And to those who never listened
To the message of thy birth,
Who have winter, but no Christmas
Bringing them thy peace on earth,
Send to these the joyful tidings;
By all people, in each home,
Be there heard the Christmas anthem:
Praise to God, the Christ has come!

G S Rowe (1830 – 1913)
Tune St. Winifred

As you gather in your homes with friends and family or with your well-loved pet may the joy of the angels, the eagerness of the shepherds, the perseverance of the wise men, the obedience of Joseph and Mary and the peace of the Christ child be yours this Christmastide. May it indeed be Christmas and not just winter.

I look forward to welcoming you to St Peter's over Christmas, Brian joins me in sending you all good wishes for a happy Christmas and a peaceful New Year.

With all good wishes

Reverend Elaine Ollman
The Rectory
Chester Road
Delamere, CW8 2HS

Community Centre News

Quiz Night on 7th December

We are really hoping for a massive turn-out at the Community Centre's 40th Anniversary Quiz Night on Friday 7th December. It should be a good festive occasion in the run up to Christmas. Don't forget to get your tickets as soon as possible. All the details are in the advert.

Major Refurbishment Planned for the Centre

At forty years old the Community Centre is beginning to show some signs of age, and so the major refurbishment being planned is much needed. A display board is now available at the Centre showing the plans for rejuvenating the kitchen, toilets and hallway.

All that is holding us up now is getting the funds, but that too is on the way. After a huge amount of effort to gather all the information needed, four grant applications have been submitted. We've recently had confirmation that three of these have been approved: the Members' Budget, for £1,839, for our Access Control System; Awards for All, valued at £5,599, for building insulation; and the Rural Support Fund, valued at £16,547, for a new central heating system. We eagerly await the outcome of the last application, which is the big one!

Community Centre activities and contacts

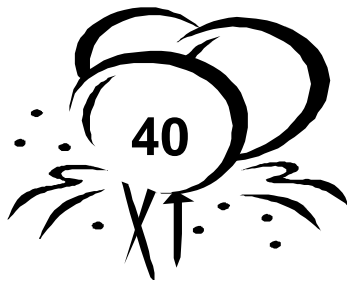
Booking Secretary	01606 882114
Badminton (Tues 10 - 12am)	01606 883027
Badminton (Thurs evening)	01606 882708
Billiards/Snooker	01606 889741
Bingo (Sat 7.30)	01606 853861
Prize Bingo (every 4 th Tues)	01606 853861
Bowls (outdoor)	01606 889174
Bowls (indoor)	01829 760420
Bridge (Mon)	01606 882003
Bridge (Wed 7 - 10pm)	01606 888391
Golden Club	01606 888117
Guides	01928 789010
Over 60 Keep Fit (Wed)	01606 882183
Whist (Thurs pm)	01606 888889
Whist (Fri pm)	01606 888889
WI (every 2 nd Tues, not Aug)	01606 889174

The **Thursday Badminton Club** is looking for new members. Contact Jane Wright on 01606 882708.

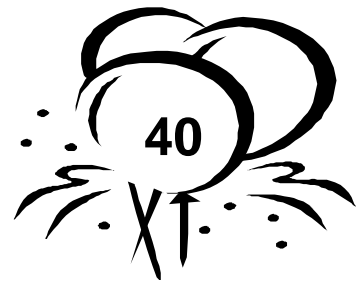
Delamere Community Association

(Registered Charity 504881)

Are celebrating the 40th Anniversary of the
Delamere Community Centre
5 Station Road, Delamere CW8 2HU



40th



**We are celebrating this event with a quiz and buffet
on Friday 7th December.**

Arrive 7:15 pm, quiz starts 7:45 pm.

Tickets £6

Includes quiz, buffet, complimentary tea, coffee, squash.
Guests may bring alcoholic drinks/glasses if they prefer.



**Quiz teams of between 4 and 6 people.
If there are not 4 of you, please do come along
as you can still be part of a team.
Prizes for the winning team.**



Raffle

Plus 'roll the coin' game to win a bottle of whisky

**For tickets and further information contact
Paula Cockroft 01606 889741
Yvonne Billows 01606 888303**

Please support your local community centre.

Delamere and Oakmere website

At long, long, last, Delamere and Oakmere are about to have a website!

In a joint initiative between the Community Association and both Parish Councils, work was started on it well over a year ago. Several different approaches ran into difficulties, but thanks to the efforts of Winston Sherman (a member of the Community Association management committee), the programme has now got going again. A highly professional website has been developed by James Hack and his colleagues at DX Designs in Knutsford. James is an enthusiastic trail runner with a passion for Delamere Forest, which prompted him to produce the design for free. A big thank-you all involved!

Another big thank-you is due to Jordi Morell of Station Road, who has volunteered to provide web hosting for the site, also for free (through his Chester-based IT company Obsidian Group).

We are hoping that the site will be operational by the time the newsletter goes to press, or very soon after, so keep an eye open for it. The web address is:

<http://www.delamereandoakmere.co.uk>



mackay's plumbing Cheshire

WE NOW INSTALL KITCHENS!

- 💧 **FREE ESTIMATES**
- 💧 **BATHROOM INSTALLATION**
- 💧 **KITCHEN INSTALLATION**
- 💧 **FLOOR AND WALL TILING**
- 💧 **MOBILITY SOLUTIONS**

Office: 01829 759 006 M: 07974 668 315
or call FREE on 0800 5422 136
www.ianmackay.co.uk info@ianmackay.co.uk

VISA MasterCard Maestro City & Guilds

Age Concern Cheshire Trader Registered

Parish Council news

For the last issue Alan Knowles, the chair of Delamere Parish Council, gave us a letter updating us on council matters. This time Tony Overland, chair of Oakmere Parish Council, has given us one. It is a particularly full one as there is a lot to catch up on.

All the main matters being addressed by the Delamere council are reported in other sections of the newsletter.

Oakmere Parish Council Chairman's Letter

Well it's certainly been a busy year so far for Oakmere Parish Council. Liz Houston our outgoing Chairwoman for last year had to deal with some major planning issues, the appointment of a new parish clerk and of particular importance the Oakmere Community Led Planning Framework. Many Oakmere residents took part and contributed to the final outcome of the initiative. This will guide Oakmere in its consideration of planning applications and will be used as a material consideration when planning applications are determined by Cheshire West and Chester Council (CWaC). Very many thanks to Liz for all her efforts on behalf of Oakmere.

I'm Tony Overland and have been a resident of Oakmere for over 30 years and became Chairman in May and there has been no pause in the range of major issues that have required consideration.

The first of these known as "Double Taxation" is where a parish council provides a service out of its precept, but the same service may be provided elsewhere by the District Council so that in effect the taxpayers end up paying twice, once through council tax and once through their parish precept.

CWaC decided to address the unfairness of this situation by levying a special expenses charge on council taxpayers in those parishes where certain facilities (play areas, Christmas lights and community police officers) were provided by CWaC in one area, but were provided in other areas by parish councils.

I know this sounds complicated, but at the moment Oakmere residents have to pay a special expense charge for the play area in Waste Lane, which is owned and maintained by CWaC. For example the special expenses, charge for this year, on a band G property is £40 extra on top of the normal council tax. We are presently

arranging for our parish, to lease and take over the maintenance of the play area at considerably less cost than at present. This will show an overall saving to residents' council tax for next year.

Sand quarrying in Oakmere has been a major activity for very many years and has had a significant impact on the Oakmere landscape and its residents. The application by Tarmac has now been approved and combines the Crown farm Quarry with the Marley Quarry, the whole site to be called Cheshire Sands.

Tarmac presently have a right of access from Station Road to the land east of the former Marley Tile Works. Following the planning approval all vehicle will access the whole of the workings from Stoneyford Lane and Station Road will no longer be a potential access point. This is good news for Station Road residents but of concern for Stonyford Lane residents especially as the Fourways Quarry is soon to close, so that all quarrying operations in the area will be via Stoneyford Lane. The Parish Council raised the concerns of residents about the dangers of heavy goods vehicles on Stonyford Lane and noise and dust as part of the planning consultations. The speed of traffic on the A556 and the junction with Stoneyford Lane is also an issue and we would like the speed limit reduced to 50MPH on the A556 and to 40MPH on Stoneyford Lane.

Tarmac will be setting up a co-ordinating group with representatives of local residents and Oakmere and Delamere Parish Councils. We hope that this will enable possible problems to be resolved quickly and effectively.

The planning application for housing development for phase three of the Wainhomes site (previously part of JS motorcycle site) has been approved, although Oakmere PC objected to the development.

The phase two development and the Court House development remain unresolved.

However the good news is that section 106 monies (payments from the developer for community improvements) have been provided and an allocation has been agreed of almost £50,000 for Delamere Academy Primary School. Other community facilities that will benefit from section 106 payments include play areas and provision of a gas supply to parts of Oakmere.

The Parish Council recently held a joint meeting with Delamere Parish Council to discuss issues of common interest such as speed limits and improvements for the pedestrian route across Delamere Station Bridge. The two councils agreed to institute a series of meetings, probably three times per year, to improve communications between the two parishes and to agree a joint approach to particular issues that affect both areas.

We have also met with Little Budworth, Utkinton and other local parishes to discuss area working arrangements set up by CWaC.

We attended a meeting called by Cuddington Parish Council to discuss housing developments in the area. A particular concern for Oakmere residents living on our eastern boundary is the major housing development at Golden Nook opposite Blakemere Craft centre. We have also been consulted about this development by CWaC.

The Parish Council has discussed in detail its response to the Community Governance Review being undertaken by CWaC and mentioned elsewhere in this newsletter. We said in our response that we are keen to ensure that Oakmere continues to enjoy its rural status, that it is an effective Parish Council and has taken on a number of initiatives to benefit the local community, such as the Community Led Planning Framework exercise. Oakmere has its own unique identity and is of a scale that enables close communication with our residents often by hand delivered documents.

The council is unanimous in its desire to remain a separate parish with its own council and does not support any proposals to merge Oakmere with Delamere nor the alternative proposal to alter the boundary line along Station Road and believes that regular joint meetings are the best way of maintaining effective communications and resolving common issues affecting the two parishes.

However, the result of the review exercise must ultimately depend on the wishes of all the Oakmere residents and how they consider that their local needs and representation can best be provided.

Tony Overland
Chairman
Oakmere Parish Council

the
FABULOUS YOU
company
at WILLINGTON HALL

Why not get what you
this **really want**
Christmas

**Spa Packages, Skin Tightening,
Permanent Hair Reduction, Peels,
Semi-Perm Make-Up and Lashes...**
start dropping the hint now!

We have a wide range of luxurious
items available – ideal Christmas
gifts for friends and family... or you!

Free gift wrapping
Gift vouchers



GUYS

Don't forget!
You can order gifts
& vouchers over
the phone

01829 759332

info@thefabulousyoucompany.co.uk

www.thefabulousyoucompany.co.uk

Review of Parish Boundaries

Cheshire West and Chester Council are undertaking a 'Review of Community Governance Arrangements' for the parishes of Delamere, Oakmere, Willington, Kelsall and Utkinton. The Terms of Reference for the review say that its scope is to consider:

- *the merger, alteration or abolition of the parishes listed above;*
- *the grouping of any of these parishes with any of their surrounding parishes;*
- *the naming and style of any new or revised parish; and*
- *the electoral arrangements of any new or revised parish.*

The Council is required by law to consult residents of the area under review. It has done so by distributing a questionnaire entitled 'Review of Community Governance Arrangements', which asked questions about the effectiveness of existing parish councils, without mentioning the actual scope of the review (to consider changing parish boundaries). D&O News posted notices around the area alerting residents to this omission.

CW&C officers have attended meetings of both Delamere and Oakmere parish councils to explain what they are doing. They reported that a second questionnaire will be distributed when CW&C publishes its draft recommendations, and that any proposed changes to parish boundaries would be mentioned then.

Both parish councils are unanimous in the comments on the review that they have submitted to CW&C. Delamere PC expressed the view that the interests of the people they represent would be best served by merging Delamere and Oakmere. They reported mixed views over whether the area around the Yeld, Waste Lane and Willington Corner should merge with Kelsall, and suggested a fuller consultation with the residents of these areas. Oakmere PC expressed its desire to remain a separate parish, and suggested straightening the boundary between Oakmere, Cuddington, and Whitegate and Marton on the eastern side of the A49, and between Oakmere and Delamere to the north of Cotebrook.

The review comes at a particularly important time for Delamere and Oakmere, both of which are in the process of developing community-led plans. Oakmere has completed its Planning Framework document and is considering how

to take this forward, while Delamere has begun the consultative process of drawing up a Parish Plan. In both cases a number of common interests have been identified, including the Community Centre (which serves both parishes), recreational and other developments in the forest (occurring mainly in Delamere but affecting both parishes), and current and proposed building developments in Oakmere that also affect both parishes.

Although CW&C has decided not to consult residents about possible boundary changes until after it has prepared its own recommendations, **you can still express your views at this stage.** If you wish to do so you should contact one or both of the Parish Council clerks (delamereclerk@yahoo.co.uk, 07730 480764); oakmerepc@gmail.com, 01606 781256).

If you are able to send your views by email, send a copy to do_newseditor@yahoo.co.uk, so that we can include it in a summary to be published in the next issue of the newsletter. Tell us whether you would prefer: to keep the boundaries as they are; to combine any of the parishes; to alter any of the boundaries between any of the parishes; or any other changes. It would also be helpful to tell us the reasons for your preference.



🧹 TRADITIONAL BRUSH AND VACUUM SERVICE

🧹 NESTS REMOVED

🧹 CAGES, CAPS AND COWLS FITTED

🧹 SWEEPING CERTIFICATES ISSUED

🧹 PROFESSIONAL, CLEAN SERVICE

🧹 FULLY INSURED

🧹 POLICE CHECKED

🧹 CARD PAYMENT ACCEPTED

01928 897 294



wilkinschimneysweep.co.uk/
westcheshire

ABBHEY ARMS NEWS

THE VALE ROYAL ABBEY ARMS OAKMERE, NORTHWICH

News and Events

DOUG GLENDON IS NEW MANAGER OF VALE ROYAL.

New Manager Doug Glendon has settled in very well at the Vale Royal Abbey Arms. The Abbey has already seen some great changes which has improved the guests experience significantly.

Doug brings with him a huge amount of experience being in the trade for some 32 years.

He has worked through all areas and departments eventually becoming an area manager over ten years ago looking after the M62 corridor for a large independant pub company.

Doug is currently married with 2 children (twins) and lives in Sale, Cheshire.

Doug is already committed to the Vale Royal and has implemented some small changes already with many more to come. His focus is customer service and value for money, but he stresses that VFM is not solely based on a financial cost!

Doug & Stephen are already planning long term activities and events and are working hard to get the Vale Royal back to being "the best Old English Inns site in the north " and one locals and visitors will be proud of.

Doug, Stephen and the team always welcome any and all comments and suggestions on how to improve the business to meet the needs of you, our customers.

Doug also has the full support and backing of the aforementioned kitchen manager Neil.

Neil is almost a part of the fabric of the building due to his length of service. Having been at The Vale Royal for over ten years with only a short break to "go south" in July last year but in February this year the pull of the north was too great and he returned to where he belongs ... The Vale Royal.

Doug is looking forward to working with Neil, Stephen and the team in developing The Vale Royal as ...

... " the place that will be the place to be " !!

This month's offers

2 meals for £9.95

A fantastic offer with many traditional favourites and available ALL day EVERYDAY!

Opening Times

Monday - Saturday
11.00am - 11.00pm

Food served
11.00 - 10.00

Sunday
11am - 11pm

SPECIAL OFFERS

The Vale Royal currently has many offers - here are just a few

Get Spicy £7.45
Curry, rice P'dom & A drink
Every Wednesday

2 Steaks & a bottle of Wine
£24.95
Every Thursday

SIZZLER for
£9.95 inc drink
Every Tuesday

Coffee & Cake
£2.95
All day everyday

Golden Years
2 for 5.25 3 for 6.75
Mon - Thurs
upto 6.00pm

With Xmas coming around quickly we are offering a special Golden Years festive menu where 2 courses cost £5.99 & 3 courses just £7.99
(available from 24th Nov Mon - Fri - **MUST be pre booked**)

The Vale Royal Abbey Arms, | Chester Road, Oakmere, Northwich, Cheshire, CW8 2HB | Tel: 01606 882747 | Email: 7080@greeneking.co.uk

Delamere parish plan

As we reported in the last issue of the newsletter, a public meeting that was held in July elected a Steering Group to lead the process of developing a Delamere Parish Plan. Barry Green is chairing the group, with Bob Clipperton as Treasurer and Jane Lowthion as Secretary. The other members are Steve Cockroft, Tom Esser, Phillip Johnson, Don MacPhearson, Jane Stewart and Colin Stubbs, along with Alan Knowles, Harry Tonge and Clive George (representing Delamere Parish Council). If you would like to assist in any way speak to any member of the group or contact the Secretary (jane.lowthion@btinternet.com, 01829 757454).

The group's first tasks included preparing its constitution (a copy of which can be obtained from the Secretary), and a work programme. This aims towards producing a draft plan in May 2013 and the final version in July.

Another major task has been to prepare an application for a grant from Cheshire West and Cheshire Council, to cover printing and other costs. Additional funds will be sought at a later stage to help with implementing the plan, mainly from local businesses.

The group is currently engaged in developing a questionnaire to be circulated to all households, covering aspects such as housing, employment, land use and development, recreation, infrastructure, the environment, and transport. Analysis of the responses will be a key component of developing the plan.

Station bridge footpath

The shortcomings of the pedestrian access across the Delamere Station road bridge have been known for many years. Fundamentally, the root problem is that although there is a footpath on the eastern side of the road, most pedestrians walk along the western side, where the main access points are (to the station car park, both platforms, the forest recreation centre at Linmere, and the new Caravan Club site).

Over many years, if not decades, there have been suggestions to build a separate pedestrian bridge over the railway on the station side of the road bridge. These have always been rejected by both the local authority and the railway, mainly on the grounds of cost. We now have a decision to make in how we as a

community wish to pursue a solution. Do we focus our attention on the footpath switching scheme, the provision of a separate pedestrian footbridge, or evolve both simultaneously?

Road traffic volumes have increased enormously over the last few years, while pedestrian traffic has soared as well (with the Forestry Commission's success in attracting more visitors and the introduction of the Caravan Club site). The Forestry Commission's plans to develop forest recreation further can only increase these pressures further. So, last summer the issue was raised again and an on-site meeting was held with CW&C Highways, attended by CW&C Councillor Hugo Deynem and several interested residents. Again it was agreed that the best solution would be a separate pedestrian bridge over the railway, but again the question of cost arose. CW&C Highways expressed the view that moving the footpath on the road bridge from the eastern side to the western side would be less than ideal, but considerably cheaper than a separate footbridge, and possibly better than nothing. Another possibility would be installing pedestrian-activated warning signs to help warn drivers.

The outcome of the meeting was reported to Delamere Parish Council, and CW&C Highways were asked to explore the costs and possible sources of funding. Councillor Deynem presented the conclusions of the investigation at the October meeting of the PC. The Highways report outlined a draft scheme for switching the existing footway to the other side of the road, at an estimated cost of about £55,000. This compares with a rough costing by CW&C Structural Engineers for a separate footbridge, of about £300,000 to £350,000. CW&C officers had also considered the installation of interactive signs, but consultation with road safety officers suggested that in this location such signs were unlikely to be approved, for safety reasons.

No funding for moving the footpath, or a new footbridge, is currently available from CW&C, but Delamere Parish Council has asked them to include it in the Local Transport Plan for next year. It would then be subjected to the same assessment/ prioritisation process as other schemes on the list. Other funds overseen by CW&C might also be available. Other possible sources included the rail company, the Forestry Commission, the caravan park, Crown Estates, and any future developer at the Marley Tiles site.



SWP ELECTRICS LTD

YOUR LOCAL ELECTRICIAN

- ALL DOMESTIC ELECTRICAL WORK CARRIED OUT •
- TESTING AND INSPECTION OF PROPERTIES •
- LANDLORDS' CERTIFICATES •

**NO JOB TOO SMALL,
WE DO THEM ALL**

- ☒ PROMPT RELIABLE SERVICE
- ☒ FREE ESTIMATES
- ☒ INSURANCE BACKED GUARANTEE

Tel **01928 740415** or **01928 740237**

Email: swpelectrics@btinternet.com

Stephen Warburton

PART P DOMESTIC ELECTRICAL
INSTALLER APPROVED

REGISTERED MEMBER
ECA

ELECSA
Approved Contractor

The Village Carolers

(Delamere's answer to "THE CHOIR")

**invite you to have fun singing carols
and other Christmas songs at:**

Whitefield Car Park in Delamere Forest

(opposite Blakemere Lake):

Saturday, 1st December 11am-3pm

Saturday, 8th December 11.am-3pm

and

outside Delamere Stores, Station Road.

Christmas Eve, 10.30am-1pm

No auditions! Just turn up when you
can for as long as you can. Victorian
costume is optional.

Any money collected will be shared
between St. Peter's Church, Oakmere
Methodist Chapel and Delamere Community
Centre.

Organ accompaniment by Steve Lucas.

For further information please
contact Gloria Ackerley 01829 752723.

Approaches that have been made in the past have met with no success.

At a subsequent joint meeting between Delamere PC and Oakmere PC it was agreed that they would work together in pressing for action. Since the parish boundary runs down Station Road, moving the footpath from one side of the bridge to the other would entail moving it from Oakmere to Delamere. Oakmere councillors had no objection to this.

A number of local residents disagree strongly with the draft scheme prepared by CW&C, and will continue pressing for a separate footbridge. If you wish to express your views on the issue you should speak to one of the Parish Councillors, and/or contact D&O News. We will keep you informed of any further developments in future issues.

What on earth? - (or under it)

Several local residents have received a letter from Her Majesty's Land Registry (a central government agency) informing them that an application has been made for registration of mines and minerals under their land, including 'powers of working and getting any such minerals'. The applicant is stated to be 'The Queen's Most Excellent Majesty in Right of Her Crown'. What on earth (or under it) is Her Majesty up to?

Shocked and distressed by the letter's implication that the bulldozers were about to move in, one resident approached local MP Stephen O'Brien. He responded promptly with a letter from Norman Lamb, the relevant Minister, explaining the many applications for minerals registration that have been made in recent months, and saying 'I know that Land Registry endeavour to deal with them sympathetically'.

Sympathetically? About the only comprehensible statement in the Land Registry's letter is that 'if you do not know what to do, you should consider taking legal advice'.

Norman Lamb's letter is much more helpful and tells an interesting story. The land in question once formed part of the Manor of Mere and Mendrem (otherwise known as Mara et Mondrum, or Delamere). The Lord of the Manor was His Majesty the King. In the early 1800s the land was divided up and distributed to property owners through the Enclosures

Acts, but the minerals rights were retained by the Crown. This is still the case (with the Crown now represented by Crown Estates), even though there is no record of it in the Land Registry. However, a change in the law means that after 13 October 2013 the owners of such minerals rights will lose their automatic protection unless they get them registered. Even if they do, the chance of them ever getting planning permission to work the minerals under residential property are slim (see article in Country Life, April 2011).

So it seems that Crown Estates are not planning to send in the bulldozers any time soon. Rather, they are taking action to preserve rights that our Kings and Queens have had for the past two hundred years. Why on earth (or under it) did they not say that in the first place?

Faster or superfaster?

Have you tried connecting your TV to BBC iPlayer to watch a programme you missed, only to be told that your telephone line is too slow? Or if you use the internet, do you get frustrated by websites that take forever to load? Soon that might change. Cheshire West and Chester Council have joined Cheshire East, Halton and Warrington in forming the Connecting Cheshire Partnership, which has many millions of pounds to spend on faster broadband connections. Connecting Cheshire will use public funds to upgrade areas which are not commercially viable for BT Openreach to do on its own. The partnership aims in particular to provide Superfast Broadband to over 90% of Cheshire premises by 2015. But does the ninety percent include Delamere and Oakmere? Will we have to wait until 2015? And why 'superfast', when out here in the sticks we haven't even got 'fast'?

For large parts of Delamere and Oakmere the basic problem is our distance from the Sandiway telephone exchange. To date BT Openreach have selected more densely populated areas like Helsby and Frodsham, even though their current speeds are already 5-10 times faster than ours. So the parish councils have approached CW&C, and the newly formed Delamere Parish Plan Steering Group has made the issue a priority, with a view to persuading BT Openreach to upgrade Sandiway much more quickly than originally planned.

You personally can help in this. If you have a computer, go to the Connecting Cheshire website (www.ConnectingCheshire.org.uk) and 'register your demand'. If you can't do it online yourself,

you could ask a friend or neighbour to do it for you. In the box that says 'Tell us what getting superfast broadband would mean to you', write something to the effect that that upgrading your local telephone exchange should be top priority, because the service it gives you is particularly slow. We are told that **priority will be given to those areas with the most registrations**, so make sure we come top!

So what is broadband speed? It is basically the speed at which data are sent down your telephone line, and it is not only for computers. Many modern televisions can now connect to the telephone, and most telephone providers have their own TV sites and programmes. Also, the nature of modern business means most companies have a website to advertise their services. We know of at least one potential buyer of a Delamere property who, when told of our poor broadband speed, showed no further interest. A good broadband speed can be vital in attracting new businesses to the area.

Now for some figures. Broadband speed is measured in megabits per second or Mbps for short. In most of Delamere speeds are not above 2 Mbps. This is far too slow for BBC iPlayer, and can make many internet services agonisingly slow, including online shopping and even CW&C's own website.

If you experience these problems yourself, we urge you to register a demand with Connecting Cheshire to make the Sandiway upgrade much, much sooner. The more Delamere and Oakmere residents who do it, the greater will be the pressure on BT Openreach to respond.

Potential mains gas supply

Update from Bob Clipperton

I have been discussing with 2 companies, for about a year now, the possibility of getting mains gas to Delamere and areas of Oakmere not likely to be served by the planned extension of the gas main from Sandiway to the Wainhomes site in Oakmere.

In mid-summer, National Grid (NG) estimated a ludicrously expensive connection cost to my property halfway along Station Road – but claimed they would have to install a second gas pipe from Sandiway because they weren't allowed to tap into another gas supplier's pipe!! I have had no further discussions with NG.

However, the second company, Total Utility Connections based in Cardiff, continued to

show much interest and in a detailed report to them, I have suggested many different connection options. More recently, at their request, I supplied a list of local businesses and guesses as to whether they would be large, medium or small eventual gas users. This company also said they had worked previously with Fulcrum, the company actually contracted to lay the 'Wainhomes pipe' – and they would contact Fulcrum to discuss co-operation.

However, just 3-4 weeks ago I received an email from Total Utility Connections saying they were no longer interested in this mains gas project. This was obviously very disappointing but TUC suggested I re-contact Fulcrum.

This I have done, and on 14th November I received a very positive reply from their Area Director in which he said he would like to meet a few parties interested in the 'Wainhomes pipe' extension. A meeting with Oakmere & Delamere PCs is being arranged. Fulcrum also said that work in laying the pipe to Wainhomes from Cuddington/Sandiway would start in a few weeks.

You will be kept informed of any future developments.

Dr. Bob Clipperton – Station Road.



**Extending or remodelling your home?
Looking for the best use of space?
Want fresh ideas with designer flair?**

- **Planning Applications**
- **Building Regulations**
- **3D Visualisations**
- **New build designs**
- **Renovation & Conversion**

Nicola Gibson
nicola@njgdesign.co.uk
 07813 034552 / 01606 301171
 Dairy House Farm, Oakmere



Caravan servicing and repairs
Motorhome, horsebox & trailer
repairs. As well as stocking parts
& accessories



**Stud Farm Buildings,
Farm Road, Oakmere,
Cheshire, CW8 2HD**

Contact Us:
01606 883613
info@alexandercaravanservices.co.uk

Nick Tomlin Cars

Your friendly local Service Centre and Car Dealer



Service and MOT

Servicing with us does not affect your manufacturer's warranty! So why pay main dealer prices?
All makes of vehicles. Free courtesy car supplied, or free collection and delivery in the Oakmere area.

Body Shop Centre

No job too big or small, from a bumper scuff to a full body re-spray.

All insurance work welcome with courtesy car supplied.

We are proud to be a family-run business established since 1994

Easy to find - we are on Chester Road, Oakmere

Tel: 01606 889494

<http://www.nicktomlincars.co.uk/>

Habitats and Hillforts

The rural character of Delamere and Oakmere is strongly influenced by the past, through the Delamere forest (which was a royal hunting ground in Norman times), as well as three of the seven prehistoric hillforts in Cheshire (Eddisbury Hill, Kelsborrow Castle, and the smaller promontory fort on the edge of Oak Mere). Over the last four years the National Lottery funded 'Habitats and Hillforts' project has brought the past and the present together through a wide range of activities that have been greatly appreciated by the many residents of the area who have participated. The project has covered all of the Cheshire hillforts except Oak Mere (which is on private land). Sadly it is now coming to an end, but it leaves us with an ongoing legacy that includes two books:

'*Captured Memories*', compiled by local volunteers David Joyce and Barbara Foxwell, gathers memories of people living near the hillforts and presents them alongside many photographs (old and new) and artists' impressions of what the hillforts may have looked like in prehistoric times.

'*Hillforts of the Cheshire Sandstone Ridge*', by project archaeologist Dan Garner, describes the archaeological work and the prehistoric information it unearthed.

To request a copy email: habitatsandhillforts@cheshirewestandchester.gov.uk

The Habitats and Hillforts website also has a wealth of other information, including a range of leaflets covering self-guided walks around Eddisbury, Kelsborrow and the other main hillforts, their archaeology, and each of the main types of habitat. Other resources include a 'Hillfort Challenge' children's worksheet and a 'digital flythrough' video of what the region might have looked like in the iron age. (http://www.cheshirewestandchester.gov.uk/microsites/habitats_and_hillforts.aspx).

... and the Sandstone Ridge Trust

A message from Ellie Morris of Habitats and Hillforts

The 'Habitats and Hillforts Landscape Partnership Scheme' has been running for the last 4 years, focussing on the Iron Age hillforts and the important habitats of Cheshire's Sandstone Ridge. Many projects have been

completed over the life of the scheme, including archaeological excavations, habitat improvements, access works, interpretation and training and volunteering.

Recently an external evaluation has been completed, concluding '*The scheme has undoubtedly been a great success*'. The evaluation is available on the Habitats and Hillforts website for download.

One of the final pieces of work to be completed is a book all about the archaeological work, written by the project archaeologist Dan Garner. The Heritage Lottery Funding is of course limited, therefore the scheme has to end at some point, but the new **Sandstone Ridge Trust** has now been set up as a legacy.

The Trust is now looking for members to get involved. Do you have skills that you could bring to the Trust? Members will be expected to take an interest in the operation and development of the Trust and to take responsibility for specific aspects of the Trust's work, for example, helping with project work or promoting the work of the Trust. The degree to which you get involved will be entirely up to you and membership is free.

The Trust would like to develop their own website in the short term and have a number of projects underway and are looking for funding. If you would like to get involved or simply find out more, a members meeting is planned for the 10th December, 6 - 8pm at the Lord Binning Pub in Kelsall. Please contact the Trust to express your interest at:

thesandstoneridgetrust@yahoo.co.uk



Your are invited to join us
on the 10th December 2012, 6:00 – 8:00 pm
at the The Lord Binning Pub, Kelsall
for a Members meeting

The Sandstone Ridge Trust Members' Meeting

We hope you can join us at the Lord Binning Pub in Kelsall for an evening meeting to discuss how you can get involved in the newly formed Sandstone Ridge Trust.

The meeting will take the form of a brief overview of where the Trust are up to, and an opportunity to talk to all the Trustees. The Trust is now seeking active members, so if you think you could get involved please come along.

There are a number of exciting projects emerging as well as a need for support with website development and communications.

Please RSVP to thesandstoneridgetrust@yahoo.co.uk

Treebeard!

From Bob Clipperton, Station Road

Whilst walking in the forest a few months ago, I was saddened to see the massive Beech tree at the top end of the Whitefield car park had been essentially beheaded – only a stump of about 10-15 feet remaining. Apparently large parts of the higher trunk showed signs of rot. This tree, you may remember, was known as the Wish Tree whereupon children at Christmas used to pin their Santa Claus presents wish list.

Imagine my surprise, astonishment and delight when I again walked that path a couple of weeks ago and saw what had been done to the trunk i.e. this:-



I understand the artist is Tom Burgess from Northwich !!!!

TRACS
DELAMERE FOREST



KONA Process £2599



Diamondback apex £599



Diamondback Response £369

NEW BIKE SHOP NOW OPEN!

Linnmere Visitor Centre,
Delamere Forest, CW8 2JD

XMAS BIKES NOW IN STOCK

- Prices Slashed
- Bike Hire
- Bike Servicing
- Cycle to work scheme available



www.tracs-uk.co.uk ■ Email: info@tracs-uk.co.uk

Tel: 01606 881802

DELAMERE STORES XMAS FRUIT, VEGETABLE AND TURKEY ORDERS

It's been another year and Christmas will soon be upon us!!

As a family we have had a fantastic year with the birth of our second son Flynn (another helper for the shop)! The weather has not been kind but thanks to all the local support the shop has continued to be busy and we have plans to try and extend the store and refit it. We are hoping this may happen in the New Year once we can secure the investment required.

As a rural village shop we do rely on your support and strive to deliver what you all expect to keep this amenity in our village. Our Christmas fruit and vegetable orders have always been popular and we are hoping this year we can build on them. We offer you the chance to order your Turkey and Veg locally so its all ready to collect on Christmas eve, last year the village choir sang outside the shop and the hot mulled wine and sherry went down very well. We will be open this Christmas Eve until 4pm, please come and join us.

Our turkeys are reared in Knutsford and prepared and delivered to us through Cowards of Frodsham and are all of the highest quality. We are also very competitive on price this year the turkeys are only £3.49/lb which is cheaper than most supermarkets weights between 8lb-20lb. You can also order streaky bacon, chipolatas and any other meat requirements all ready to collect with your order, hassle free.

We offer many brands of wine not available through the larger chains and have already started taking case orders for Christmas on an extremely popular Italian Prosecco "Tosso" this is a fantastic sparkling wine and at only £7.99 a bottle is a clear winner over expensive champagne its presentation alone will compliment any Christmas table. Case orders of any of our wines will all receive a discount, please speak to Lee.

I and all the family hope the New Year brings good fortune to you all and we wish you a happy Christmas.

Lee and all the team at Delamere Stores.

ALL YOU NEED TO DO IS FILL IN THE ORDER FORM ON THE REVERSE, DROP IT OFF AND LEAVE THE REST TO US. YOUR ORDER WILL BE READY FOR COLLECTION RIGHT UP UNTIL XMAS EVE.

NAME.....

TELEPHONE NUMBER

ADDRESS IF TO BE DELIVERED (FREE WITHIN 5 MILES OF THE STORE)

.....

.....

.....

I WILL COLLECT MY ORDER ON 23rd PM / 24th AM

I HAVE ORDERED A TURKEY AND MY ORDER NUMBER IS

PLEASE NOTE IF YOU WISH TO ORDER A TURKEY PLEASE DO SO AT THE TILL SO WE CAN CONFIRM YOUR ORDER AND TAKE A DEPOSIT. THANK YOU.

DELAMERE STORES CHRISTMAS ORDERS

VEGETABLES	QUANTITY*	SALADS	QUANTITY*
POTATOES		ICEBURG LETTUCE	
LEEKs		LITTLE GEM LETTUCE	
CARROTS		CUCUMBER	
CAULIFLOWER		SPRING ONIONS	
SPROUTS		RADISH	
CABBAGE		CELERY	
CABBAGE (white/red)		MIXED PEPPERS	
SWEDE		TOMATOES	
PARSNIPS		FRESH HERBS (specify)	
BROCCOLI		FRESH CHILLI	
ONIONS RED/WHITE			
MUSHROOMS			
CELERIAC			
FRUIT	QUANTITY*	FRUIT	QUANTITY*
APPLES (cox)		SATSUMAS	
APPLES (gala)		ORANGES	
APPLES (pippin)		LEMONS	
APPLES (crispin)		LIMES	
APPLES (bramley)		FIGS	
BANANAS		DATES	
GRAPES GREEN/DARK		COCONUTS	
OTHER REQUIREMENTS			

*Please specify quantity either in weight or in the number of mouths to feed