

# Delamere and Oakmere News



Number 27

March 2013



Winter sky over Oakmere, by Henry James Ball

## **In this issue:**

- **Review of parish boundaries - a second consultation**
- **Cheshire Polo Club**
- **Community Centre refurbishment**
- **Update on parish plans**

## ***Forthcoming events***

### ***Church services***

#### **St Peter's Church, Delamere**

Palm Sunday 24 <sup>th</sup> Mar	8.00am Holy Communion, 10.30am Morning Worship, 6.30pm Evening Prayer
Maundy Thurs 28 <sup>th</sup> Mar	7.00pm Holy Communion
Good Friday 29 <sup>th</sup> Mar	10.30am Morning Worship, followed by coffee and hot cross buns
Easter Sunday 31 <sup>st</sup> Mar	8.00am Holy Communion, 10.30am All Age Family Service with Holy Communion (including an Easter Egg Hunt!), 6.30pm Holy Communion
Pentecost 19th May	8.00am Holy Communion, 10.30am Holy Communion
Trinity Sunday 26th May	8.00am Holy Communion, 10.30am Morning Worship with the Archdeacon of Chester

#### ***Regular services***

1 <sup>st</sup> Sunday of month	8.00am Holy Communion, 10.30am Matins, 6.30pm Service at Ashton
2 <sup>nd</sup> Sunday	8.00am Holy Communion, 10.30am Family Service, 6.30pm Holy Communion
3 <sup>rd</sup> Sunday	8.00am and 10.30am Holy Communion, 6.30pm Service at Ashton
4 <sup>th</sup> Sunday	8.00am Holy Communion, 10.30am Service of the Word, 6.30pm Evensong
(5 <sup>th</sup> Sunday)	8.00am Holy Communion, 10.30am Matins, 6.30pm Special Service

#### **Oakmere Methodist Church**

Wed 27 <sup>th</sup> May	7.30pm Musical Evening celebrating <b>the Chapel's 100<sup>th</sup> anniversary</b>
Sat 29 <sup>th</sup> June	Flower festival

The church fellowship meets together every Sunday morning at 10.45am, followed by refreshments. All are welcome to come and join us.

**100<sup>th</sup> anniversary** - please contact Anne or Eric Wright (01829 732950) or Rev Denise Harding (01928 733180, revdenise@btinternet.com) if you have historical information or memories to share.

### ***Delamere and District Golden Club***

April 3	AGM
April 17	Joan Colwell - "It began in 1977"
May 1	Coach trip
May 15	Susan Ross-Turner - "Egypt"
May 29	Afternoon tea - a talk from Cheshire Police on Home Safety
June 12	Entertainment by pre-school children
June 26	Cara Mason - "Keep Fit"

#### ***All ages welcome!***

*For all queries regarding events and membership please call the Secretary June Budd on 01606 888117*

### ***W.I.***

April 9	Daydream dolls	Dolls
May 14	Members	Resolutions and mini show
June 11	Cath Turpin	Canal life
July 9	Moreton Hall	Behind the scenes
September 10	Mr Hadfield	The origin of everyday sayings
October 8	Members	To be arranged
November 12	AGM	
December 10	Christmas party	

*Meetings are held at 7.30pm, every second Tuesday in the month except for August, at Delamere Community Centre*



## Foreword

The picture on the cover of this issue, of a winter sky over Oakmere, was sent in by Henry James Ball of Crabtree Green - the winner of the photo competition announced in the last issue. Congratulations! It looks even better in colour, as you will see if you take a look at the newsletter on the website. Other pictures that have been sent in are included elsewhere in this issue. Many thanks to all contributors. Please keep sending us any of your photos that you would like to share with readers - they are very much appreciated. Pictures of places or people in Delamere or Oakmere are particularly welcome, but if they are of people please get their permission first.



Spring is here!



We have devoted a lot of space in this issue to the review of parish boundaries that is being carried out by Cheshire West and Chester Council. This is because all residents in Delamere and Oakmere are about to receive a questionnaire asking for our views. We were not at all happy with CWaC's first round of consultation, but they have promised that the second will be a great deal better. **Please do respond to the questionnaire when you get it.**

Other items in this issue include an article about the Cheshire Polo Club, the latest news on the refurbishment of the Community Centre and

Delamere's Parish Plan, and a link to an article that appeared recently in the Chester Chronicle about safety at the Delamere Station bridge.



The Lake in Delamere  
by Christopher Bradley

## About the newsletter

Delamere and Oakmere News is published on a semi-regular basis three or four times a year. The next issue is planned for some time in the summer.

Articles, ideas for articles, news of recent events or forthcoming ones, advertisements, photographs, and any other contributions relevant to Delamere and/or Oakmere are all very welcome (inclusion subject to editorial discretion).

The newsletter is available in **full colour** on the Delamere and Oakmere Community website. You can also get a PDF file of the colour version by email (contact us if you would like a copy).

*do\_newseditor@yahoo.co.uk*  
or ring Clive George on 01606 882183



Delamere Forest  
by Henry James Ball



### Family events programme

We are offering a range of events for children, families and adults again this year, ranging from Den Building and Mini Beast Hunts for the children to a Dawn Chorus and Dragonfly Walk for the adults.

New for Delamere this year is a Forest Holiday Club for 7 to 12 year olds during the Easter and Summer school holidays. If your child loves the outdoors drop them off for the day to learn more about the forest, experiment with a range of bushcraft skills and make new friends. Days are run by fully qualified, experienced Forest School leaders, who have enhanced CRB checks.

For further information about the programme of family events and workshops available or to book please e-mail Helena on [delamere@forest-explorers.co.uk](mailto:delamere@forest-explorers.co.uk), call on 07808 506308 or visit the website [www.forest-explorers.co.uk](http://www.forest-explorers.co.uk)

### Fitness in the forest programme

To launch an exciting new programme of fitness classes Delamere Outdoor Fitness (DOF) are offering **free** taster sessions from 11am - 2pm on Easter Sunday and Easter Monday.

Delamere Outdoor Fitness will be offering a broad programme of out door fitness classes at Delamere from Easter. The classes will range from Pilates to Boot Camps and will run on weekdays and weekends throughout the day.

**For more information and to book visit [www.chesterfitness.co.uk](http://www.chesterfitness.co.uk)**

### Cancer Research UK Race For Life

Join in this year's 5km Race for Life by coming along to run, walk, dance, support and sponsor, and show cancer who's boss by raising money to fund groundbreaking research into new drugs and treatments. The event takes place on Sunday 19th May at 11am. **To register and for more information visit [www.raceforlife.org](http://www.raceforlife.org)**

### The Charlatans announce a return to Delamere Forest

The Charlatans have announced that they are the third and final headline act confirmed to perform in Delamere Forest on Sunday 7th July as part of the Forestry Commission's annual Forest Live concert series. It will be a home forest gig for the band who last appeared in Delamere Forest to a sell-out crowd in 2007. **Tickets available from [www.forestry.gov.uk/music](http://www.forestry.gov.uk/music) or Box Office tel 03000 680400.**

Tickets have sold out for Paloma Faith, who will perform on Friday 5th, and Blondie, on Saturday 6th July.

## **Letter from the Rector**

*Easter 2013*

Dear Friends

You may have noticed that sadly we have had to fell one of the large conifer trees in the churchyard. The strong winds, snow and rain in the middle of January caused the mighty tree to split and it was in danger of falling. So it was with a sense of regret that we arranged for it to be cut down.

The tree was about 100 years old, as a small sapling it would have been planted probably just before the Great War. Delamere and Oakmere would have been covered in forest with scattered farmsteads and lodges with none of the modern houses that we see today.

The tree was tall and straight pointing to the heavens it was a haven for birds and insects, it was a shelter and a protection whilst it was in the churchyard it silently spoke about strength and courage, about steadfastness, faithfulness and dependability it was testament to the joy, hope and love of those who planted it.

Now it's gone but the empty space also speaks to us. On Good Friday after the crucifixion of God's Son Jesus Christ it seemed that all that he stood for – steadfastness, faithfulness, dependability, strength, courage and love were

gone, chopped down, destroyed. But on Easter Day the disciples found that the tomb was empty, Jesus was not there he had risen from the dead. There was an empty space where his body had been laid. Evil and death and sin had been defeated.

When you see the place where the tree once stood, remember that on Easter Day the tomb was empty, the stone rolled away Jesus is alive and walking in our world today he is still strong, dependable, trustworthy and all loving. Why not make the prayer of St Richard of Chichester your own:

Most merciful Redeemer,  
Friend and Brother,  
may we know you more clearly,  
love you more dearly,  
and follow you more nearly,  
day by day. Amen.

May the joy and hope of the risen Christ be yours this Eastertide. Brian joins me in sending you all good wishes and blessings.

Elaine

Reverend Elaine Ollman  
The Rectory  
Chester Road  
Delamere, CW8 2HS

## **Delamere Forest Events**

For further information (unless stated otherwise) e-mail Helena on [delamere@forest-explorers.co.uk](mailto:delamere@forest-explorers.co.uk), call 07808 506308, or visit the website [www.forest-explorers.co.uk](http://www.forest-explorers.co.uk).

### **March**

*Fitness in the forest.* Easter Sun, 31st Mar and Easter Mon, 1st Apr, 11am-2pm. FREE taster sessions by Delamere Outdoor Fitness (DOF). For more information visit [www.chesterfitness.co.uk](http://www.chesterfitness.co.uk)

### **April**

*Easter Hunt.* Tues 2<sup>nd</sup>. Drop in anytime between 10am & 4pm - £4/child  
*Teddy Bears Picnic.* Wed 3<sup>rd</sup> & Fri 5<sup>th</sup>, 10am-12pm or 1pm-3pm- £5/child  
*Forest Holiday Club.* Mon 8<sup>th</sup>, Tues 9<sup>th</sup> & Wed 10<sup>th</sup>, 10am-3pm, £25/child.  
*Bush craft.* Thurs 11<sup>th</sup>, 10am-12pm or 1.30pm-3.30pm - £6/child  
*Den Building.* Fri 12<sup>th</sup>, 10.30am-12pm or 1.30pm-3pm - £4/child  
*Badger Watch.* NEW! Sat 27<sup>th</sup>—6.30-8.30pm -£10 pp

### **May**

*Dawn Chorus.* Sun 5<sup>th</sup>, 5.30-7.30am-£5 pp  
*Cancer Research UK Race For Life.* Sun 19<sup>th</sup> at 11am. For more information visit [www.raceforlife.org](http://www.raceforlife.org)  
*Den Building.* Thurs 30<sup>th</sup> & Fri 31<sup>st</sup>, 10.30am-12pm or 1.30-3pm - £4 pp  
*Minibeast Hunt.* Thurs 30<sup>th</sup>, 10-11am, 12-1pm, 2-3pm—£4/child  
*Bush Craft.* Fri 31<sup>st</sup>, 10am-12pm or 1.30-3.30pm -£6/child  
*Wildlife Walk.* Fri 31<sup>st</sup> - 10am-12pm -£3 pp

### **June**

*Wildflower Walk.* Sat 22<sup>nd</sup> June, 2-4pm -£3 pp



**TRACS**  
DELAMERE FOREST



KONA Process £2599



Diamondback apex £599



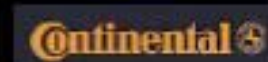
Diamondback Response £369

## NEW BIKE SHOP NOW OPEN!

Linnere Visitor Centre,  
Delamere Forest, CW8 2JD

## MANY BIKES NOW IN STOCK

- Prices Slashed
- Bike Hire
- Bike Servicing
- Cycle to work scheme available



www.tracs-uk.co.uk ■ Email: info@tracs-uk.co.uk

**Tel: 01606 881802**

## Community Centre News

### 40<sup>th</sup> Anniversary Quiz night

Delamere Community Centre celebrated its 40<sup>th</sup> anniversary on Friday December 7<sup>th</sup> with a quiz and buffet. This was a huge success with over 90 people in attendance. The quiz master Steve Lacey did a great job assisted by Paul Jones. The DCA and Trustees would like to thank residents from Delamere, Oakmere and surrounding areas for supporting this event. We are hoping to hold another quiz night later in the year due to popular demand. If anyone has any suggestions regarding other evening events as well as the quiz please contact either Paula on 01606 889741 or Winston on 01606 889411. Or if you would like to book the Community Centre for an event, please contact the Booking Secretary on 01606 882114.



Dr Tony Entwistle cuts the cake, with the help of fellow trustees Rev Elaine Ollman and Pat Wheeler



### Refurbishment

Exciting times are ahead for the Community Centre following a number of successful grant applications which have resulted in a massive windfall worth over £80,000 towards refurbishment costs.

The grants, which have been confirmed over the last few weeks, are from the following sources:

- FCC Environment Ltd (administered by WREN through the Landfill Communities Fund) – a total of £51924.29 towards a new kitchen, toilets (including a new accessible toilet), refurbished entrance hall and a new front door. 
- Cheshire West & Chester Rural Support Programme – £16,547.32 towards a new central heating boiler and control system, various electrical alterations and a new fire detection and warning system. 
- The Big Lottery Fund Awards for All – £5598.59 towards installation costs for cavity wall and roof insulation and replacement of rear fire escape door. 
- Ward Councillors Members' Budget – £1839.00 towards a new Security Access Control system.
- Knauf Insulation – free insulation material for the wall cavities, main hall roof and bowling room loft. 

Refurbishment started in mid-March, and will take approximately 4 to 6 weeks.



Whose turn to do the washing-up?

There are no plans to cancel any activities, and the DCA would ask patrons to bear with them at this time. The Post Office will still be open as usual during refurbishment but all other activities will be using the bowling room entrance to access facilities.



## ***Delamere Community Association "100 Club"***

Are you a member of Delamere Community Association? If so, would you like to join the "100 Club"?

This is a very simple and fun way for the Delamere Community Association and its Members to fund-raise for the Community Centre, whilst at the same time giving you the chance to win cash prizes during four "normal draws" in the year, together with the chance to win DOUBLE prize money in the AGM "Super Draw" on July 8th 2013 and there is also a further draw for "non-winning numbers" at the end of the "100 Club" year. In all that is 18 chances (6 draws of 3 prizes in each) to win cash prizes and support your local Community Centre, all for the sum of £12 for a number. - In total £700 is repaid in prize money throughout the year.

If you are interested in supporting your local Community Association by becoming a member, or would like further details, please contact Evelyn MacPherson, on 01606 301762.

### ***Delamere Post Office Services***

Don't forget that Delamere has still a post office, open two days a week.

#### ***Use it or lose it!***

The service is provided as an "outreach" Post Office on Wednesdays and Fridays in the *Community Centre, Delamere*. You can post parcels, buy stamps, draw cash from your bank account (free of charge), and use other Post Office services.

#### ***Opening hours:***

Wednesdays 9.30am to 2pm  
Fridays 9.30am to 1pm

#### ***Telephone:***

During PO hours: 07763 254163  
At other times: 01565 723712

## ***Bereavements***

We have introduced this sad item of news so as to spare a thought for those who have recently departed the community, and to offer our condolences to their loved ones.

Eric Darlington (November)  
Carol Comboy ((November)  
Meg Weston (December)  
Hazel Tapley (December)  
Monica Pinder (January)  
Doreen Dillon (February)

### ***Community Centre activities and contacts***

Booking Secretary	01606 882114
Badminton (Tues 10 - 12am)	01606 883027
Badminton (Thurs evening)	01606 882708
Billiards/Snooker	01606 889741
Bingo (Sat 7.30)	01606 853861
Prize Bingo (4 <sup>th</sup> Tues of month)	01606 853861
Bowls (outdoor)	01606 889174
Bowls (indoor)	01829 760420
Bridge (Mon)	01606 882003
Bridge (Wed 7 - 10pm)	01606 888391
Golden Club	01606 888117
Guides	01928 789010
Over 60 Keep Fit (Wed)	01606 882183
Whist (Thurs pm)	01606 888889
Whist (Fri pm)	01606 888889
WI (2 <sup>nd</sup> Tues of month)	01606 889174



Tortoiseshell butterfly  
attempts to wake hibernating dog  
by Gloria Ackerley



# ABBNEYWOOD

## ESTATE

*Abbeywood Estate offers relaxed dining in our very own Garden Café. So rest awhile and enjoy a lunch, slice of home-made cake and light refreshments.*

*We use home-grown and locally-sourced premium produce wherever possible. This includes:*

*Free-range eggs from Abbeywood hens.  
Vegetables, fruit and herbs from our vegetable garden.  
Ethically-sourced meats.*

It's all about us providing you with simple, healthy sustainable food.

**There are eight garden areas, each with its own distinctive character and themed planting:**

**Glasshouse Borders  
Tropical Garden  
Pool Garden  
Pergola Walk  
Chapel Garden  
Vegetable Garden  
House Terrace  
House Frontage  
Arboretum and Woodlands**

### **Opening hours:**

<b>Sunday</b>	<b>9am – 5pm</b>
<b>Monday</b>	<b>9am – 5pm</b>
<b>Tuesday</b>	<b>9am – 5pm</b>
<b>Wednesday</b>	<b>9am – 5pm</b>
<b>Thursday</b>	<b>9am – 5pm</b>
<b>Friday</b>	<b>Closed</b>
<b>Saturday</b>	<b>Closed</b>

Abbeywood Estate, Chester Road  
Delamere, Cheshire CW8 2HW  
T: 01606 889477

Email: [info@abbeywoodestate.co.uk](mailto:info@abbeywoodestate.co.uk)  
Web: [www.abbeywoodestate.co.uk](http://www.abbeywoodestate.co.uk)



The WI New Year lunch



**"ALL ON AN APRIL EVENING"**

**A CONCERT**  
**Presented by CONCORDIA**  
**in**  
**St. PETER `S CHURCH DELAMERE**  
**on**  
**FRIDAY 19<sup>th</sup> APRIL 2013**  
**commencing at 7.00 p.m.**



**TICKETS :- £6**  
**(which includes wine and refreshments)**

**Children Free if accompanied by an Adult**

**Tickets available from the following :-**

<b>Revd Elaine Ollman</b>	<b>01606 882184</b>
<b>Mrs Pat Wheeler</b>	<b>01606 883631</b>
<b>Mrs Mary Carter</b>	<b>01606 883645</b>

**DATE FOR YOUR DIARY - Thursday, 6<sup>th</sup> June, 2013**

**ASH-WORTH TIME BANK GRAND SUMMER CONCERT**  
**at Eaton Hall Estate**

**by kind permission of the Duke of Westminster**

**Starring Dr Jazz & The Cheshire Cats Big Band**

**Drinks and canapes plus additional musical accompaniment in the Long Room by Stephen Lucas.**

**Followed by Grand Raffle & sumptuous buffet in the dining room.**

**Concert will commence at 8: 15pm**

**This promises to be a spectacular evening in the elegant and historic surroundings of Eaton Hall.**  
**Tickets are available from the Time Bank Office. Please let us know as soon as possible if you'd like to**  
**reserve tickets for family and friends as we expect tickets to sell out quickly.**

**Ticket Price £20**

**Lifts can be arranged for those without transport.**

**Contact:**

**Susan Ross-Turner or Caroline Massos 01829 751398**

**Kath Wood 01606 301141**

## ***Parish Council news***

### *Delamere Parish Council Chairman's Letter*

Firstly on behalf of the Parish Council I would like to take this opportunity to welcome our new Parish Clerk, Joanne Monks. I would also like to say thank you to our outgoing clerk, Denise French, who has left us to take on a full time role as clerk to Middlewich Town Council.

The last few months have been unusually quiet from the parish council viewpoint. The main issue on the agenda is the Local Governance Review of proposed Town/Parish council boundary changes, of which there is a more detailed article in this newsletter. Please take the time to read through this article. Cheshire West and Chester Council will soon be delivering a further questionnaire to all households, and the Parish Council would urge everyone to make their views known.

More recently Delamere Parish Council was seen on TV as part of the BBC programme The Planners, which is shown on Thursdays at 8pm and is well worth watching. The filming took place last summer, and I can only say there must be an awful lot of tape on the cutting room floor.

Just a reminder that the Delamere PC AGM will soon be with us on the 15th April, and the council would like to invite members of the parish to the meeting.

Alan Knowles  
Chair, Delamere Parish Council.

### *Oakmere Parish Council Chairman's Letter*

Oakmere Parish Council has made progress with a number of initiatives since the last newsletter

The Oakmere Community Led Planning Framework (OCLPF) has been agreed following the final consultation exercise. The council at its last meeting considered whether we should take this forward and expand it into a neighbourhood plan. This would be a statutory document requiring considerable input from the local community and would have to follow the procedures set out in the Localism Bill. However it would build on the OCLPF and require far less work than if we had to start from scratch. The council therefore decided to meet with officers from Cheshire West and Chester Council (CWaC) so that we could be

informed of the additional measures required to produce a plan for Oakmere.

As mentioned in the last newsletter the issue of double taxation meant that a special expenses levy for maintenance of the play area in Waste lane had to be paid by Oakmere residents, in addition to the normal council tax raised by CWaC. We have been in negotiation with CWaC with a view to the Parish Council taking over the play area in Waste Lane and thus considerably reducing the cost for our residents. However CWaC decided to review the operation of the levy from April 2013. The Council has deferred a decision until we know the cost effects for Oakmere residents.

The Council at its January meeting set the annual precept at £4,680 this is a reduction of £320 due to a grant from CWaC as a result of changes in financial arrangements

Following requests from residents on Stonyford\* Lane we have written to CWaC requesting the provision of a footpath from the A556 up to the properties at Crabtree Green Court. We are hopeful that the work will be carried out fairly soon, as we understand that there are some infrastructures monies available to meet the cost of the work.

Representatives from the Council recently attended a meeting with other parishes in the Kelsall and Tarvin ward to discuss matters of common interest including the Community Governance Review, Neighbourhood and Parish plans.

I am pleased to report that a grant from Natural England, under their paths for communities has been approved, for the first part of a scheme to create a Multi user route from Stonyford Lane to Station Road. This will be known as Oakmere Way and is supported by both Oakmere and Delamere Parish Councils. The first part will terminate at the eastern end of the public footpath that leads via Golf Course Road to Station Road. It is hoped to complete this first stage by September, so that the footpath link will connect Stonyford Lane with Station Road. An application will be submitted later in the year to provide a new multi user route for the western end of the remainder of the way.

Tony Overland  
Chairman  
Oakmere Parish Council

\* Some readers may notice that I have spelt Stonyford without an "e". This is the correct



spelling as shown on OS maps since the 19th century. Some years ago Vale Royal Council decided to provide new road signs and spelt Stonyford incorrectly. Protests were to no avail, so it remains misspelt.

T.O.

### ***The website***

The Delamere and Oakmere Community website has now been up and running for the past three months. The Community Association and both Parish Councils each have a Noticeboard on which you can find the latest news, such as significant planning applications and progress with initiatives such as the Community Centre refurbishment.

Further recent information is given in the minutes of Parish Council meetings, on the Home Watch page, and on the pages devoted to Delamere's parish plan and Oakmere's community-led planning framework.

The website is also a mine of other information about the area and local activities. If you spot any errors or omissions, or have any ideas for how the site can be improved, please do get in touch with one of the editors listed on the website's Contact Us page.

<http://www.delamereandoakmere.co.uk>

### ***Webmaster wanted!***

Since the website was launched three months ago the editors have been keeping it up to date through a temporary arrangement for uploading content. A volunteer is now sought to take over this task. Although some experience of website management would be an advantage it is by no means essential, as we have discovered for ourselves. If you are reasonably computer literate and would like to give it go please get in touch ([do\\_newseditor@yahoo.co.uk](mailto:do_newseditor@yahoo.co.uk)).

### ***Delamere Information Booklet***

Many residents who have moved into Delamere in the past dozen years or so have been delighted to find that the previous owners of the house left an information booklet about local activities and services. The last issue is now decidedly out of date, so the Parish Council has updated it with one for 2013. This will be distributed free of charge to all Delamere households, in many cases along with this issue of the newsletter. If you don't get a copy you

can download it from the website, or phone the editor on 01606 882183.

### ***Delamere parish plan***

If you haven't yet seen this derivative of Lord Kitchener around Delamere you soon will.



## ***Your Parish Needs You***

Two extremely dedicated sub-groups of the parish plan steering group that was set up last July have now completed the task of developing, revising, re-revising, refining and eventually finalising two questionnaires that will provide the basis for developing the plan. The first of these, for local businesses, was distributed towards the end of February and many helpful responses have been received.

Now comes the big one, for all Delamere households. This will be distributed at the end of March, accompanied by a multitude of Lord Kitcheners, on posters, banners and fliers, urging residents to fill it in. If you live in Delamere, the parish really does need you, to ensure that the plan for its future reflects the views of all its residents.



# J&S Oakmere

**Motorcycle Megastore**

## **THE BIGGEST MOTORCYCLE AND ACCESSORIES STORE IN THE UK!**

J&S Accessories Ltd was started in Northwich nearly 30 years ago, and now has twelve stores across the UK. The Northwich store moved to Oakmere last year.

- **Large selection of new and used bikes**
- **Main Kawasaki dealer**
- **Massive selection of brands**
- **Service and parts department**
- **Café serving hot and cold food and drinks**

**J&S Accessories Oakmere** is a Kawasaki dealer with a motorbike showroom, and extensive clothing, helmet, boot and ladies departments amongst others. The store has a large customer carpark to the rear of the building.

**On the A556 Chester Road**

**Oakmere,  
Northwich,  
Cheshire,  
CW8 2HB**

**Telephone: 01606 810800**

**Website: [www.jsaccessories.co.uk](http://www.jsaccessories.co.uk)**

### **Opening Hours**

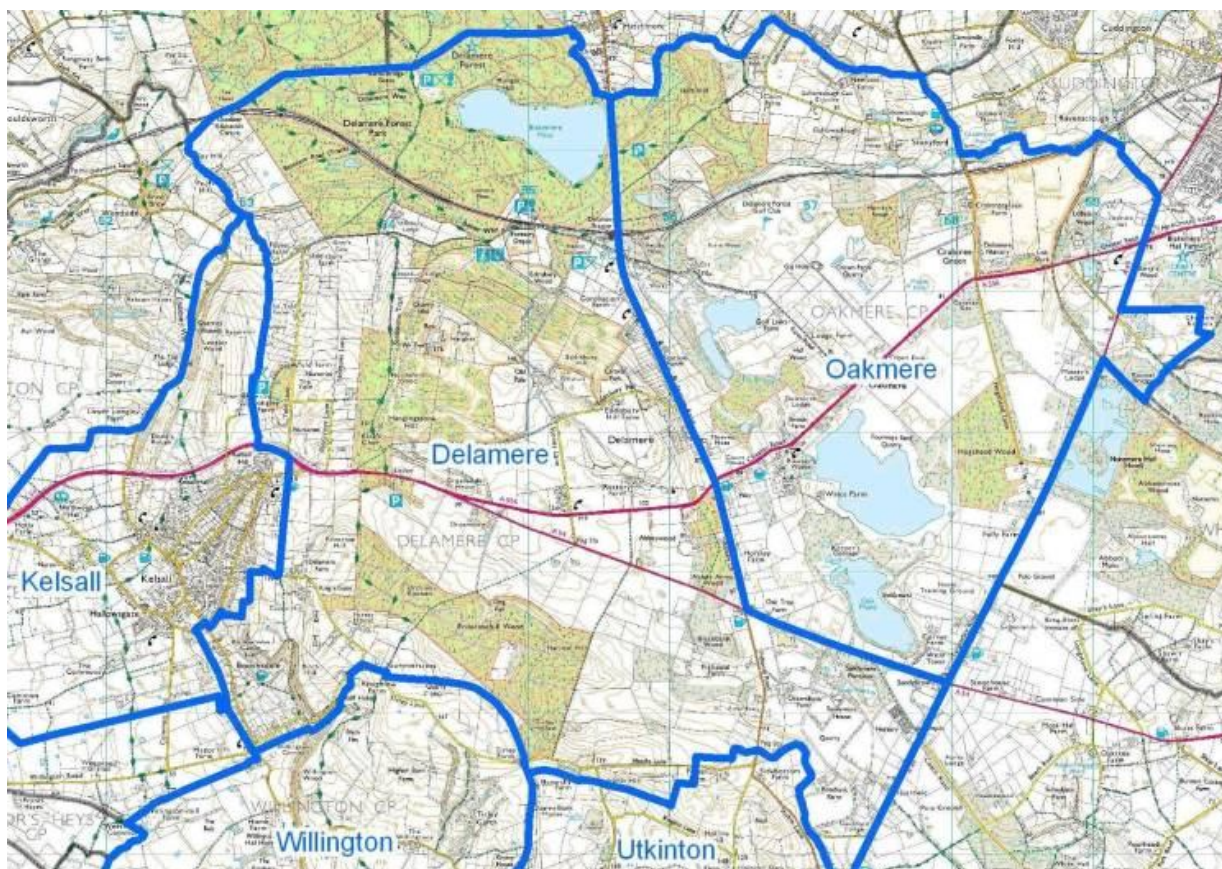
<b>Mon-Fri:</b>	9.00 - 18.00
<b>Sat:</b>	9.00 - 17.30
<b>Sun:</b>	10.00 - 17.00

## Review of Parish Boundaries

As we reported in the last issue, Cheshire West and Chester Council are undertaking a 'Review of Community Governance Arrangements' for the parishes of Delamere, Oakmere, Willington, Kelsall and Utkinton. One of the aims of the review is to determine whether the current arrangement of these Parish Councils is seen by their communities as functioning effectively, or whether any changes should be made to improve their ability to discharge their

responsibilities. In association with this, the review is required to consider the **merger, alteration or abolition of any of the five parishes, their grouping with any of their neighbouring parishes, and the names and electoral arrangements for any new or revised parish.**

Not everyone knows exactly where the boundaries are, so here is the map that has been distributed by CWaC.



As can be seen on the map, properties on one side of Station Road and Abbey Lane are in Delamere, while those on the other side are in Oakmere. Mere Crescent, Chrimes Drive and Farm Road are in Oakmere, while the Community Centre, St Peter's church and Oakmere Methodist chapel are all in Delamere. To the east, the boundary between Oakmere and the parish of Cuddington and Sandiway runs down Forest Road and Tarporley Road. To the west, the boundary along the A54 separates the Yeld Lane part of Delamere from the village of Kelsall. To the south-west, the boundary of Delamere loops around Boothsdale to include the majority of the population of Willington, separating it from the neighbouring 'unparished area' of Willington. The boundary

to the west of Boothsdale places a few more Willington residents in Tarvin, to the south of Kelsall. Most of the rest of the boundaries run through less populated areas.

**The outcome of the review could have a major influence on the future development of the area.** The expansion of tourism within the parish boundary of Delamere, and of housing development and quarrying within the parish boundary of Oakmere, could all have a considerable effect on the character of both parishes. Should we tackle these and other challenges as a single community or as two communities? And do those who live on the western side of Delamere or the eastern side of





[www.stonyfordcottagegardenursery.co.uk](http://www.stonyfordcottagegardenursery.co.uk) NOW YOU CAN BUY PLANTS ONLINE

# Stonyford Cottage Nursery and Gardens



Cheshire's Gardens  
of Distinction

Home of England's Finest Gardens

Stonyford Lane, Oakmere. Close to Delamere Forest. Follow brown signs. Close to A556/A49 jun. Sat Nav. Post Code CW8 2TF.  
Tel 01606 888128



## We are Now Open for the New Season!

### Springtime is here!

Fantastic choice of Shrubs, Perennials, Alpines  
and Rockery Plants.

As experienced growers for over 20 years we pride ourselves in giving you the best quality and value. This year we have some exciting new varieties that are rarely offered elsewhere.

Over 1000 Varieties Grown.

Upto 50% saving on Garden Centre Prices.

Free Planting Scheme Advice

#### STONYFORD GARDENS -

The nursery and gardens lie in a sheltered valley on the edge of the Delamere Forest. In this tranquil spot, amid low hills and mature trees, can be found a wealth of planted areas, meandering streams and a constantly flowing, spring-fed fountain.

Developed around the pools, the gardens are approached by crossing two bridges, which lead to and from a wooded island.

#### New for 2013

- 60 m Boarded walk and Bird Hide
- Waterside Summer House
- Chicken Tree Hut Animal Enclosure

#### GROUPS WELCOME

We offer Guided tours, Cream teas.

To book please email us at  
[stonyfordcottage@yahoo.co.uk](mailto:stonyfordcottage@yahoo.co.uk)



#### Whats on at Stonyford

##### **Plant Hunters Fair Bank Holiday**

Monday 27th May 2013.

A fantastic event with several nurseries selling unusual and rare plants.

10am - 3pm.

Refreshments available.

##### **Romeo and Juliet**

Wednesday 14th August

Thursday 15th August

Evening performance starts 7pm.

Please bring picnic and chairs.

Tickets booked in advance. Early booking essential.

Call 01606 888970 or buy tickets online at

[www.folksytheatre.co.uk](http://www.folksytheatre.co.uk)

##### **National Garden Scheme days**

Sunday 9th June

Sunday 11th August

from 1.30pm to 5.00pm

Oakmere feel a part of this, or do they feel a closer affinity with neighbouring communities?

The views of Delamere and Oakmere Parish Councils are expressed below, based on their understanding of residents' interests. They may have got it right, or they may not. We have all got the opportunity to express our views directly to Cheshire West and Chester Council. Following an initial round of consultation in October, they are due to distribute a second questionnaire to all affected households towards the end of March. **FILL IT IN!**

### **The views of Delamere Parish Council**

*From Harry Tonge, Vice-Chair*

A review of this nature does not happen frequently, and as a result Delamere Parish Council have been at pains to think about improvements to the way they currently work but also changes to our surrounding area which will impact on our ability to support our community's development over the next few years.

To address current concerns, the parish council will be reviewing the comments made through the first questionnaire issued toward the end of 2012 to see what concerns were expressed, what can be done, and feed this through into our future plans. We already know that communication around understanding our community's needs and also what the council is doing to address these is important. Our recently introduced Delamere and Oakmere Community Website, the continuation of our shared community newsletter, and the creation of a Delamere Parish Plan are all attempts to improve our connection, which we hope are helping.

However, looking forward we also believe that we need to plan for changes which are likely to change the shape of our Parish. Delamere is a parish with a long and proud history. Nevertheless it is a parish made up of several small dispersed communities largely sited around the boundary of our parish and, therefore, bordering other parishes. Future housing developments, very close to us at Fourways and the Marley site (physically in the neighbouring parish of Oakmere) are likely to change the area to result in expanding the "community" running the length of Station Road, around Abbey Lane and up to Mere Crescent. Currently parts of this community - people and local resources - sit in Delamere and

part in Oakmere, with many activities focused on the joint Community Centre in Station Road. Delamere Parish Council's view is that the development of this community needs careful and clear oversight which is not helped by having two parish councils responsible for it. We are therefore recommending that the two parishes be combined (this would only happen from 2015 if accepted) to ensure that we have that.

In recommending this we recognise that there will need to be a change to both parishes' current identity but we see this as necessary to give focus to a community. We would urge residents of both Delamere and Oakmere to make their views on this known via the next questionnaire on the Governance review (due to be distributed by Cheshire West and Chester Council towards the end of March).

At the same time we believe it is opportune to clarify the relationships of some of the other areas of our parish. Currently Willington exists as part of Delamere and Tarvin parishes with a further area of the community being unparished. Clearly for the community in Willington it would be better if one parish covered them. We would hope that the community can use the opportunity of the questionnaire to make their views known. Finally, some of the communities around Waste Lane and the Yeld have indicated in the previous questionnaire a view that they should be part of Kelsall Parish rather than Delamere and the upcoming questionnaire is the opportunity to clarify that.

Harry Tonge  
Vice-Chair  
Delamere Parish Council

### **The views of Oakmere Parish Council**

*Letter to the Review Committee*

Councillor Ann Wright  
Chairman – Community Governance Review Committee  
15th October 2012

OAKMERE PARISH COUNCIL

Dear Madam

#### Community Governance Review

Following receipt of the letter dated 10th August 2012 and enclosed Terms of Reference, Oakmere Parish Council would like to submit our comments as follows:



**Motorcycles, Scooters, Trykes, Quads  
Cars, Vans and Three Wheel Cars  
MOTs, Tyres, Servicing, Repairs, Air  
Conditioning, Diagnostics  
Collection from local area**

**Opening Hours:**

8.30 am – 5.30 pm Monday to Friday

8.00 am – 1.00 pm Saturday (MOTs only)

Tel: 01606 882219

Fax: 01606 881700

Email: [spanns.garage@zen.co.uk](mailto:spanns.garage@zen.co.uk)

[www.spanns-garage.co.uk](http://www.spanns-garage.co.uk)

**Dalefords Lane**

**Whitegate**

**CW8 2BW**

your local

## PIANO TEACHER



Lessons from beginners to Grade 8  
standard

Composition & Improvisation included

## STEPHEN LUCAS

A.T.C.L.(Mus.Ed.), Cert. of Mus.Ed.

Performers Cert.

Abbey Lane, Delamere

**Tel. No.: 01606 881631**

## SWP ELECTRICS LTD

### YOUR LOCAL ELECTRICIAN

- ALL DOMESTIC ELECTRICAL WORK CARRIED OUT •
- TESTING AND INSPECTION OF PROPERTIES •
- LANDLORDS' CERTIFICATES •

**NO JOB TOO SMALL,  
WE DO THEM ALL**

- ☒ PROMPT RELIABLE SERVICE
- ☒ FREE ESTIMATES
- ☒ INSURANCE BACKED GUARANTEE

Tel **01928 740415** or **01928 740237**

Email: [swpelectrics@btinternet.com](mailto:swpelectrics@btinternet.com)

Stephen Warburton

PART P DOMESTIC ELECTRICAL  
INSTALLER APPROVED

REGISTERED MEMBER  
**ECA**

**ELEC SA**  
Approved Contractor



**TRADITIONAL BRUSH AND  
VACUUM SERVICE**

**NESTS REMOVED**

**CAGES, CAPS AND COWLS FITTED**

**SWEEPING CERTIFICATES ISSUED**

**PROFESSIONAL, CLEAN SERVICE**

**FULLY INSURED**

**POLICE CHECKED**

**CARD PAYMENT ACCEPTED**

**01928 897 294**



**[wilkinschimneysweep.co.uk/](http://wilkinschimneysweep.co.uk/)**  
**westcheshire**



## Easylife Garden Machinery

e-mail: [info@gm.co.uk](mailto:info@gm.co.uk)

[www.easylifegm.co.uk](http://www.easylifegm.co.uk)

tel: 01606 889833

**Sales, Spares, Servicing & Repairs for all leading makes  
of Garden Machinery.**

**We are located at Dairy House Farm on the corner  
of Farm Road and Chester Road on the A556  
Opposite the Fourways Quarry, Oakmere, CW8 2HB  
Open Mon -Fri 8.30 – 5.00. Saturdays: 8.30 – 1.00**

*Call us for any further information or details.*



**Caravan servicing and repairs  
Motorhome, horsebox & trailer  
repairs. As well as stocking parts  
& accessories**



**Stud Farm Buildings,  
Farm Road, Oakmere,  
Cheshire, CW8 2HD**

**Contact Us:**

**01606 883613**

[info@alexandercaravanservices.co.uk](mailto:info@alexandercaravanservices.co.uk)

Oakmere Parish Council is a dedicated and committed group of people who are keen to ensure that Oakmere continues to enjoy its rural status. The Parish Council feels that they operate as an effective Parish Council and have taken on a number of initiatives to benefit the local community. These include:

- provision of the local play area (situated at Bowyers Waste)
- provision of the small woodland (The Little Wood)
- production of a Community Led Planning Framework

The Parish Council enjoys good relationships with neighbouring Parishes and has demonstrated positive cross boundary relations/collaboration with regard to various common issues:

- attendance at Cheese and Wine evenings
- joint meetings
- supporting the revitalised Delamere & Oakmere Newsletter
- developing a shared Community web-site

The members of the Parish Council represent a geographical spread throughout the Parish and as such this ensures good local knowledge and good relationships with the residents of Oakmere, allowing them to receive hand delivered circulars regarding any issues that the Parish Council is actively involved in. The personal delivery of circulars allows residents an opportunity to speak directly with members of the Parish Council.

The dissemination of information relevant to Oakmere residents will also be further reinforced via the revived Delamere & Oakmere Newsletter and the shared Community web-site.

Successful engagement with residents has recently been demonstrated throughout the process of the development of the Oakmere Community Led Planning Framework. The process arose from the disproportionate amount of planning applications that Oakmere Parish Council was receiving but has allowed the whole community an opportunity to engage with the Parish Council and reinforce Oakmere's distinct identity.

The consensus of Oakmere Parish Council is to maintain the Parish of Oakmere.

However; due to the large number of current and possible future housing and leisure developments in Oakmere, and the foreseeable

increase in the population of the Parish as a result of the developments, Oakmere Parish Council anticipates that there will be a need to increase the number of seats on the Parish Council to provide an additional 2, or possibly, 3 councillors.

In addition, when considering the boundary of the Parish, Oakmere Parish Council would suggest that the boundary be amended to exclude Cheshire Kennels, on the east of the parish, but include Sandybrow and Ottersbank Farm at the south of the parish.

I sincerely hope that the comments expressed within this submission will be given full consideration as part of the Community Governance Review.

Yours faithfully  
Amanda Jackson  
Clerk to Oakmere Parish Council

### ***Station bridge, broadband and gas***

The problem of pedestrian safety at the Delamere railway station bridge hit the headlines in the Chester Chronicle recently (7<sup>th</sup> March). If you haven't seen the article you can download it here (<http://www.chesterchronicle.co.uk/chester-news/local-chester-news/2013/03/07/delamere-resident-s-concerns-about-village-railway-crossing-59067-32936061/>).

Thanks largely to the efforts of Dr Bob Clipperton, Cheshire West and Chester Council have at last come up with a plan for improving pedestrian safety at the bridge. In the Chronicle article, local MP Stephen O'Brien and CWaC Councillor Hugo Deynem explain their support for the plan, while Dr Clipperton explains why he believes it is not enough. If you have strong views either way you can contact the parish council or the editor.

Dr Clipperton has also been active in pursuing faster broadband access and a mains gas supply, through the D&O News and elsewhere. The second of these seems to have reached an impasse, but the first is still moving forward (slowly) through the Connecting Cheshire initiative described in the last issue.

## Cheshire Polo Club

Have you ever thought of taking a picnic down to the Polo Club to watch the action? Everyone is welcome, whether you know anything about the sport or not. It is one of the fastest and most spectacular to watch, even if you don't understand the rules. It is also one of the oldest (said to have originated in China or Persia about 2500 years ago).



And on most weekends **it's free!** For the busier tournaments a charge of £10 is made for the car park, but otherwise you can just drive in, make yourselves comfortable and watch the spectacle (to the accompaniment of thundering hooves). Bring a pair of binoculars if you have them, as the far side of the ground is 200 yards away. To take advantage of the clubhouse facilities and the members' marquee you can become a Day Member for £5 per head.



The season begins at the end of April, with tournaments every weekend until mid September. Events start at 12.30 p.m.



Although the sport has a history of being played by kings it is certainly not exclusive. You might occasionally bump into a royal or two, but the Club's membership includes men, women and juniors from all walks of life. Many of them learned to ride as they learned to play polo. Lessons are available from the club coach, and ponies can be hired throughout the season. There is a sliding scale of membership, from a modest fee for social members up to full senior membership.

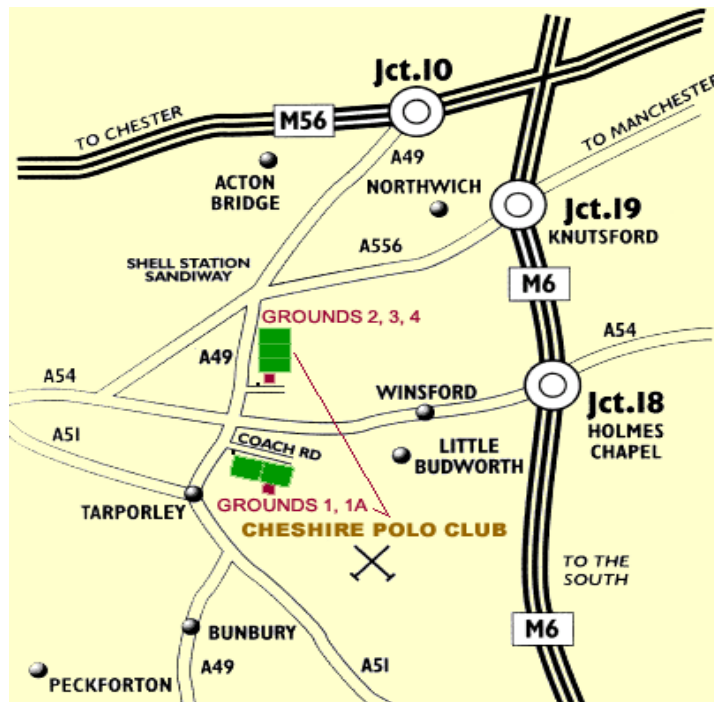


The five grounds are all accessed off the A49 between Cotebrook and Sandiway. Numbers 1 and 1a are via Coach Road, and 2, 3 & 4 (and the Marquee) via Longstone Lane. For more information ring 01270 611100 or email [info@cheshirepoloclub.co.uk](mailto:info@cheshirepoloclub.co.uk).

(photos courtesy Cheshire Polo Club)



## **CHESHIRE POLO CLUB**



Cheshire Polo Club – Grounds Off A49 Forest Road, Tarporley, Cheshire

Nos. 1 & 1a Grounds are accessed via Coach Road

SAT NAV CW6 9DT

Nos. 2, 3 & 4 Grounds and Marquee are accessed via Longstone Lane

SAT NAV CW6 9ES

### **VISITORS ARE ALWAYS WELCOME**

Come and watch some great polo every weekend from 12.30 p.m. – entry is free. A small charge of £10 per car will be made to non-members on certain tournament days. Bring the family and a picnic and make a day of it, or maybe you would prefer to become a Cheshire Day Member at a cost of just £5 per person and take advantage of the facilities of our clubhouse or members' marquee. Catering facilities are available every weekend.

For all enquiries about fixtures and joining the Club please contact  
Cheshire Polo Club, The Polo Office, Edge House, Smithy Bank, Acton, Nantwich, Cheshire CW5 8LF.

Tel: 01270 611100 or Email: [info@cheshirepoloclub.co.uk](mailto:info@cheshirepoloclub.co.uk)

Website: [www.cheshirepoloclub.com](http://www.cheshirepoloclub.com)

For all Marketing, Sponsorship or Events please contact Mark Cramb

Tel: 07944 578754 or Email: [mark@cheshirepoloclub.co.uk](mailto:mark@cheshirepoloclub.co.uk)







## Oakmere Cricket Club

Oakmere CC have Senior Mens, Juniors and Ladies teams playing over the weekend and mid-week matches.

Outdoor training will commence as follows:

Senior Nets: 2nd April 6.30pm  
Junior Nets: 10<sup>th</sup> April 6.30pm  
Ladies Nets: 8th April 6.30pm

Matches start mid-April.

New players and spectators are always welcome!

If you are interested in playing please contact: [secretary@oakmerecc.co.uk](mailto:secretary@oakmerecc.co.uk)

Location: Overdale Lane, Oakmere, Northwich CW8 2EL

Website: [www.oakmerecc.co.uk](http://www.oakmerecc.co.uk)

# njg DESIGN

*Extending or remodelling your home?*

*Looking for the best use of space?*

*Want fresh ideas with designer flair?*

- Planning Applications
- Building Regulations
- 3D Visualisations
- New build designs
- Renovation & Conversion

Nicola Gibson

[nicola@njgdesign.co.uk](mailto:nicola@njgdesign.co.uk)

07813 034552 / 01606 301171

Dairy House Farm, Oakmere

**mackay's plumbing Cheshire**

**WE NOW INSTALL KITCHENS!**

- 💧 **FREE ESTIMATES**
- 💧 **BATHROOM INSTALLATION**
- 💧 **KITCHEN INSTALLATION**
- 💧 **FLOOR AND WALL TILING**
- 💧 **MOBILITY SOLUTIONS**

Office: 01829 759 006 M: 07974 668 315  
or call FREE on 0800 5422 136  
[www.ianmackay.co.uk](http://www.ianmackay.co.uk) [info@ianmackay.co.uk](mailto:info@ianmackay.co.uk)

VISA MasterCard Maestro City & Guilds

Age Concern Cheshire Trader Registered

## ***Thoughts of the Golden Club at Christmas***

*What goes on in the Golden Club? This poem by Mrs Thelma Ashbrook reveals all.*

*ed.*

At Delamere Golden Club today we're here to celebrate,

because it's nearly Christmas a most important date.

We do a lot throughout the year a bit of everything,

we play some games to keep us fit, we're often known to sing.

When we have a keep fit day we forget our pains and woes.

If you can't get your knees up at least you can wriggle your toes.

We remembered the Queen on jubilee day although she didn't come down,

but we all looked just as regal, and some of us wore a crown.

We sailed across the Mersey and wound up in a pub,

a crowd of hungry sailors queuing for our grub.

You'd enjoy the Delamere Derby if gambling is your vice,

whether you win or lose depends on how they throw the dice.

I don't think you would lose your shirt at twenty pence a horse,

you'd see some bright young fillies, and a few old nags of course.

June organised a Christmas trip to Liverpool to shop,

until your purse was empty and you felt about drop.

But there the coach was waiting you fell into your seat,

longing to wear your slippers and soak your aching feet.

Bob won't allow us to go home until we've done a quiz.

I'm afraid I'll wear the dunce's hat if my answers don't match his.

The Christmas dinner smelled so good we couldn't wait to try it,

forget about your waistline girls next year you're on a diet.

So "Merry Christmas" to us all and that's including me,

after all the talking I've just done, I need a cup of tea.

WRITTEN BY Mrs THELMA ASHBROOK.



St Peter's choir at Christmas  
by Gloria Ackerley

### **THANK YOU!**

#### **TO ALL THE "VILLAGE CAROL SINGERS":**

*From Gloria Ackerley (01829 752723)*

Andrew, David, Carole, Carole, Kay, Anne, Eric, Tom, Pat, Evelyn, Don, Steve, Maggie, Lorraine, Glyn, Thelma, Audrey, Anne, Margaret (I hope I have all the names!), Steve Lucas who played the organ for us in the forest, all those who supported us and wished us well even though they could not join us, to Lee and Ryan for their support in Delamere Forest and for their hospitality as we sang outside Delamere Stores on Christmas Eve. Thank you, Joe, for keeping us going with sustenance and a thank you to all the customers.



**£180 was raised in all** (£102 outside the shop!) £60 was donated to St.Peter's Church, £60 to Oakmere Methodist Chapel and £60 to the Community Centre.

It was a good chance for everyone to get together. By popular request it seems we might be meeting up next year! Thank you all again.

*Gloria*