

ISSUE 37 | SUMMER 2016



DELAMERE
& OAKMERE

NEWS

IN THIS ISSUE

**A DELAMERE & OAKMERE NEIGHBOURHOOD PLAN
PARISH RECREATION AREAS
THE MAGISTRATES' COURT - NEW HOPES?**



- ♦ *Independent small animal veterinary hospital*
- ♦ *Caring for pets and their owners*
- ♦ *24hr emergency service on site*
- ♦ *Exceptionally high standards of care, hygiene, facilities and equipment*
- ♦ *Professional, friendly, welcoming & kind*
- ♦ *Part of the local community*



584 Chester Road | Sandiway | Cheshire | CW8 2DX

Tel: 01606 880890 | www.hollybankvets.co.uk

IN THIS ISSUE

FORTHCOMING EVENTS	2
FOREWORD	6
LETTER FROM THE RECTOR	9
COMMUNITY ASSOCIATION NEWS	11
PARISH COUNCIL CHAIRMAN'S LETTER	14
NEIGHBOURHOOD PLAN	16
WILDLIFE IN THE PARISHES	20
THE MAGISTRATES' COURT	26
SUMMER QUIZ & CROSSWORD	29
FRITH AVENUE & WASTE LANE QUESTIONNAIRE	31
USEFUL CONTACTS	33

Forthcoming Events

ST PETER’S CHURCH, DELAMERE ☩

REGULAR SERVICES

EVERY SUNDAY

8am - Holy Communion

SECOND SUNDAY

10:30am - Family Service

OTHER SUNDAYS

10:30am - Holy Communion

SPECIAL SERVICES

18TH SEPTEMBER

10.30am - Special service to celebrate 200 years since the laying of the church foundation stone

9TH OCTOBER

10.30am - Harvest Festival

30TH OCTOBER

6.30pm - All Souls, a quiet service of reflection and thanksgiving

13TH NOVEMBER

10.30am - Remembrance Sunday

OAKMERE METHODIST CHURCH ☩

In the main church at 10.45am every Sunday morning for a service led by a Methodist Local Preacher or Minister. One service a month includes the sacrament of Holy Communion, led by a Minister (Presbyter). Contacts: Anne or Eric Wright (01829 732950) or Rev Denise Harding (01928 733180).

THE WOMEN’S INSTITUTE

Date	Speaker	Title	Competition
SEPT 13TH	Cleo Sadler	Snugbury’s Ice Cream	to be announced
OCT 11TH	-	Great Christmas Tree project	
NOV 8TH	-	Annual Meeting	
DEC 13TH	-	Christmas Party	Home made snowman

President: Lorraine Roberts 889188, Secretary: Mrs S Goodwin 888921, Treasurer: Mrs C Green 882264. Meetings are held at 7.30pm, every second Tuesday in the month except for August, at Delamere Community Centre. <https://twitter.com/delamerewi>, <https://www.facebook.com/DelamereWI>

DELAMERE AND DISTRICT GOLDEN CLUB

ISSUE 37 | SUMMER 2016

JULY 20TH, 2PM

Garden Party at The Paddock. Bring and Buy etc.

SEP 7TH, 2-4PM

Delamere Derby Race with giant dice

SEP 21ST, 1-4PM

Birthday Lunch with musical entertainment by Stephen Lucas

OCT 5TH, 2-4PM

Harvest Service with Rev. Elaine

OCT 19TH

Harvest Lunch followed by Bingo

NOV 2ND

Christmas Outing (details to be announced)

NOV 16TH, 1.30-4PM

Delamere Academy Choir entertain

NOV 30TH, 2-4PM

Speaker: Jean Finney “The Origin of Nursery Rhymes”

DEC 14TH, 1-4PM

Christmas Lunch followed by the Concordia Choir

NEW MEMBERS WELCOME!

We meet every fortnight on Wednesday afternoons, except August, at Delamere Community Centre. No upper or lower age limit! For further information please contact Gloria or Robin Ackerley tel: 01829 752723

WITHIN THE COMMUNITY

NEW
FEATURE

British Eventing Horse Trials & ‘Pets on the Hill’ at Kelsall Hill Equestrian Centre

23RD, 24TH AND 25TH SEPTEMBER 2016, 8am onwards

Watch some of the top riders in the country, local riders and riders from afar compete in all three disciplines, dressage, show jumping and cross country. £5 entry per car. Running alongside the horse trials is ‘Pets on the Hill’, organised by Willows Vet Group, hosting a great family day out. Trade stands and food concessions will be present.

Community event listings are FREE and are included subject to editorial discretion. If you’d like to advertise your event in the next issue of Delamere and Oakmere News, please contact Phil on info@neavecreative.co.uk for more information. Let’s get the community together!

David Hodkinson Landscaping and Garden Maintenance Service

from small jobs to large

25 years' experience in the garden
industry (formerly Acton Bridge
Garden Centre Proprietor)

please call Dave on
07791414919/ 01606 624364

email:
gentlemengardeners@gmail.com

nicolagibson ARCHITECTURAL DESIGN

- One off houses
- Extensions and remodelling
- Residential developments
- Barn Conversions
- Garden Rooms

All drawings prepared for and submitted to the
Planning and Building Control departments on
your behalf, including Listed Building and
Conservation area Consent where necessary.



Please contact Nicola Gibson to discuss your
next project.

Tel: 01606 301171, Mobile: 07813 034552
Email: nicola@njgdesign.co.uk

www.njgdesign.co.uk

Alexander Caravan Services



Caravan/motorhome servicing and repairs
Horsebox and trailer repairs
Parts and accessories
Calor gas stockists
and now - Calor woodfuels and coal!

www.alexandercaravanservices.co.uk
Stud farm buildings, Oakmere, Cheshire
01606 883613

BBQ SEASON

Forrester's BBQ bags are now available! They include:



8 x Beef Burgers

8 x Burger Buns

4 x Tikka Chicken Kebabs

4 x Plain Chicken Kebabs

5 x BBQ Chicken Drumsticks

5 x Chinese Chicken Drumsticks

10 x Pork Sausages

1kg bag x Hot & Spicy Chicken Wings

ALL FOR ONLY £21.50!!



Also available: Delicious Minted Lamb Chops, Plain Lamb
Chops, Pork Loin Steaks, Rib-Eye Steaks &
Marinated Chicken Fillets



FORRESTER'S



Address: Mill Lane, Kingsley, Cheshire

Post Code: WA6 8HY

Telephone: 01928 789217

OPEN TO THE PUBLIC 7 DAYS A WEEK

FOREWORD

The new look that we launched with the last issue of the newsletter got a very warm response from readers, so here we are again with another in the same format. Many thanks to all of you who gave such encouraging feedback, and also to our advertisers, without whose support we would have no newsletter.

This issue includes two important items about the future of the parish. One of these concerns a proposal to develop a Neighbourhood Plan for Delamere and Oakmere, which has been agreed by the Parish Council, but which needs enthusiastic volunteers to help make it happen. The other concerns the recreation areas at Frith Avenue and Little Wood, for which residents are asked to complete a questionnaire saying what they would like. The Frith Avenue field in particular needs a decision, on whether

we develop it into something that residents really appreciate and can make full use of, or hand it back to the Forestry Commission. Our new chair of the Parish Council, John Edwards, tells us about both of these.

Many readers will be wondering what is going on at the old Magistrates' Court. The future of the building is still highly uncertain, but we've got some provisional answers. Also, David Wright has given us another article about birds and butterflies seen around the parish, while Robin Ackerley has given us one on bees. Other items in this issue include an update on the United Utilities borehole field, a report from the Women's Institute on their multiple anniversary celebrations, another crossword, another quiz, another poem from our local poet laureate, and now a sudoku too!

Clive George & Phil Neave

About the Newsletter

Delamere and Oakmere News is published three times a year with the support of the Parish Council. The next issue is due towards the end of November, in time for Christmas.

Articles, ideas for articles, news of recent events or forthcoming ones, advertisements, photographs and any other contributions relevant to Delamere and/or Oakmere are all

very welcome (inclusion subject to editorial discretion).

The newsletter is available to view on the Delamere and Oakmere Community website and you can also get a PDF file by email (contact us if you would like a copy).

Editorial: do_newseditor@yahoo.co.uk

Advertising: info@neavecreative.co.uk

SUPPORT THE NEWSLETTER

If you would like your business to feature in the next issue of the Delamere and Oakmere News, we would be happy to send you a handy advertising guide that gives you all the information you need to know. **Email Phil on info@neavecreative.co.uk.** All proceeds from advertisements go into the printing of the newsletter, so we really couldn't do this without you. Thank you!



Hello

We're a design studio in Oakmere

We're passionate about helping brands communicate with their audience



BRANDING &
IDENTITY DESIGN



PRINT & GRAPHIC
COMMUNICATIONS



WEBSITES & DIGITAL
MARKETING



Look the business to get the business. Be so good they can't ignore you.

GET IN TOUCH



☎ 01606 566 202

✉ info@neavecreative.co.uk

🌐 www.neavecreative.co.uk

WE ARE
**NEAVE
CREATIVE**

St. Peter's Notice Board

From the Registers – February to July 2016

We welcomed by Baptism:

February	Isabelle Grace Lynch
April	Evie Violet Fisher
May	Samuel Adam Thwaites

We said farewell to:

May	John Richard Gaunt Dean
July	Mary Carter

Sunday 18th September at 10.30am

Special service to celebrate 200 years since the laying of the church foundation stone. The Archdeacon the Venerable Michael Gilbertson will be preaching. This is the first of the special events to mark the bi-centenary of the church

Sunday 9th October at 10.30am

Harvest Festival – a service for all ages to celebrate Harvest.

Once again we will be collecting dried and tinned goods for the Mid-Cheshire Foodbank; helping to support local people who are in need.

Sunday 30th October at 6.30pm

A quiet service of reflection and thanksgiving to celebrate All Souls and to remember all those loved ones who have died whether recently or in the past.

Sunday 13th November at 10.30am

Remembrance Sunday we join with others all around the world as we recall the great sacrifices made by so many who gave their lives in war.



LETTER FROM THE RECTOR Summer 2016

ISSUE 37 | SUMMER 2016

Dear Friends

I am delighted to tell you that through the support of Delamere & Oakmere Parish Council, Cheshire West & Chester Council, The Peter Kershaw Charitable Trust, Delamere Church of England Primary Academy and generous personal donations we are now in a position to instruct the contractor to go ahead with the refurbishment and repainting of the church clock in celebration of our bi-centenary in 2017.

Over the past weeks as I have been recovering from further surgery on my leg I have been delighted to receive many cards, letters and emails which have really cheered and encouraged me.

To receive a letter says much more than just the writing on the page. Someone has taken the trouble to send us a message to share something with us. The Bible is full of letters that Paul, Peter, James and John wrote. Around the second half of the first century AD these writers wanted to share with others what they knew about God.

I too want to share what I believe. At the centre of the Eternal is not some strange, remote Spirit which understands nothing of how we feel; on the contrary it is somewhere where humanity is present. The humanity of Jesus that ran through the streets of Nazareth as a boy, the humanity of a man deeply moved by the death of his friend; who knows what it is to be tired and hungry; a man who knows what it

is to be humiliated and die in agony and pain. The heart of our eternal God is not remote and distant but a place where love and understanding are present. We need not hesitate or be afraid to pour out our troubles and heartache in prayer. God cares, God understands because when Jesus' time on earth was over he took our humanity with him to glory.

We warmly invite you to worship with us at St Peter's, each Sunday there are services at 8am and 10.30am. Usually on the 2nd Sunday of each month at 10.30am, we have a service for all ages. Children are welcome at all our services and we provide story-bags for the younger ones.

Do contact me by telephone or email if you would like me to visit or pray for you.

I close with the beautiful words from another letter in the Bible.

'To him who is able to keep you from falling and to present you before his glorious presence without fault and with great joy – to the only God our Saviour be glory, majesty, power and authority, through Jesus Christ our Lord, before all ages, now and for evermore! Amen' Jude verses 24 & 25 NIV

Brian joins me in sending good wishes and blessings

*Revd Elaine
The Rectory
Chester Road
Delamere, CW8 2HS*

COMMUNITY ASSOCIATION NEWS

Helping Hands

The Home Care Specialists

Est. 1989

Do you need a Helping Hand?

Home care in Chester and the surrounding areas, from 30 minutes per week to full time Live-in Care.

Helping Hands has been providing award winning quality help at home since 1989. A family run company we apply our local knowledge and over 25 years of experience to offer you one to one home care that enables you or your loved one to remain at home with compassion and dignity.

Our locally based Carers are able to balance independent living with bespoke care needs by assisting with:

- Housekeeping
- Shopping
- Companionship
- Help getting out and about
- Complex nursing-led care
- Providing a break for an existing Carer or family member
- Personal care
- Support with continence
- Supporting a hospital discharge

If you are looking for extra support for those everyday tasks that are becoming a little more difficult, we're happy to help - from as little as half an hour per week to full time Live-in Care.

To find out how we can help you, call:

01244 434 890

or visit: www.helpinghands.co.uk



Recruiting Carers Now

The Association had its Annual General Meeting on 4th July, where an operating surplus of almost £10,500 was reported. As agreed at last year's AGM a new floor was purchased and laid, the first since the Community Centre was built over 40 years ago! A fresh badminton court was painted onto the floor and the doors to the Bowling Room were also replaced. These refurbishments cost £10,300, leaving a surplus of £200 to be added to the bank account..

The DCA is anticipating a more modest surplus this year and has earmarked small improvements, including a bench for the Bowling Green, a new gate for the side entrance and replacing the Notice Board outside the Centre. We are also hoping to carry out remedial works to the Pump House and, possibly, resurfacing the Car Park. However, that depends how much we are quoted for the work!

The Main Hall in the Community Centre is now available for bookings all day Saturdays and on Sunday afternoons and evenings throughout the year, so if you have a family party or celebration why not give it a try?

The Centre is also ideal for fund raising events and meetings and is not expensive to hire – and is half price for members of the DCA! The Main Hall is also available on Monday and Thursday evenings throughout the summer when the Indoor Bowls and Thursday Badminton Clubs are having their summer breaks.

If you are interested and want to check availability then look on the parish

website, where you can also find details of who to contact. The website address is

<http://delamereandoakmere.co.uk/bookings-enquiries/>.

The Chairman of the Association, Pat Wheeler, or the Treasurer, Steve Lacey, are happy to help with enquiries. The usual range of activities are there for you to enjoy, so if you fancy a frame of snooker, hand of bridge, game of badminton or having a look at any of the other clubs and societies that use the Community Centre, then get in touch with the contact on the website – we would be delighted to see you.

Coffee mornings

Our monthly Drop-in Coffee Mornings are on the last Friday of each month



The Association is looking for Secretary and a Booking Secretary.

If you are interested in giving something back to the local community by undertaking one of these roles then please contact Steve Lacey for more information about what they entail (if possible before the next committee meeting on 5th September).



The golden club AGM in April.

Photo Gloria Ackerley

Three Anniversaries

Lorraine Roberts

As most of you are aware, 2015 saw the centenary of the Women's Institute and many and varied celebrations took place all over the country, including Afternoon Tea at the Delamere Community Centre, hosted by our Institute.

Also in 2015 the 95th birthday of the Cheshire Federation was celebrated in style with a variety of functions and activities. Continuing the birthday theme, this year Delamere Women's Institute is celebrating its 75th anniversary. The first meeting was held in May 1941 and some very familiar names are recorded in the record of that first meeting.



We held our party after we had discussed the Resolutions at our May meeting and we were very pleased to welcome some former members who helped us to celebrate. Members had provided an excellent finger buffet and Cynthia Green had made a delicious fruit cake, decorated with the Delamere WI logo. A good time was had by all. To mark the occasion, Cheshire Federation gave us a certificate which we will frame and display in the Community Centre. Jean Johnson has been with Delamere W.I. since she was a girl of 13 and a certificate noting this achievement has been presented to her.



We have been entertained again this year by some very interesting speakers and had a fun evening in February learning to play indoor kurling. We are looking forward to hearing the speakers that are booked for the rest of the year. The committee has started on the programme for 2017 which also promises to be varied and interesting – we aim to please. Do look out for our notices and see if anything appeals to you, then come and give us a try. You can find us on Facebook and Twitter now too – our thanks to Ellen Piercy for bringing us into the 21st century.

New members and visitors can always be assured of a warm welcome – we'd love it to be you!

Photos from the W.I Facebook page



BARN DANCE

Delamere Community Centre

Saturday 19th November

7:45pm to 10:45pm

**Live music featuring
Flaxmere Ceilidh Band and Caller**

Tickets £12.50

Includes Hog Roast supper

Complimentary tea, coffee & squash
You can bring your own alcoholic drinks/glasses
if you prefer

Raffle & Free Prize Draw

Further information can be obtained from:

Robin Ackerley **01829 752723**

email: robin.ackerley@btinternet.com

Activities and contacts

Bookings	01606 883631
Badminton (Tues)	01606 883027
Badminton (Thurs)	01606 882708
Billiards/Snooker	01606 882190
	01606 620070
Bowls (outdoor)	01928 571674
Bowls (indoor)	01829 760420
Bridge (Wed)	01606 888391
Golden Club	01829 752723
Over 60 Keep Fit	01606 888043
Slimming World	07817 725939
Whist (Thurs)	01606 889357
Whist (Fri)	01928 561565
Women's Institute	01606 889188

What a year! I moved to Delamere in spring last year and have to say it's been the most pleasurable experience. I am a firm believer in the fact we should all put into our local community, thereby ensuring that our children and grandchildren enjoy its delights for many years to come. It was for this reason I applied to join the Delamere & Oakmere Parish Council, and have taken on challenges such as the Frith Avenue and Bowyer's Waste project and the Neighbourhood Plan. More on both of those later.

I was then honoured to be invited to be Chairman of our Parish Council and accepted without hesitation. My aim for the next 12 months is to leave a legacy, with projects ongoing for next year's Chairman to take to the next level. Importantly though, we need as many residents as possible to get involved so we can make a real difference.

Looking back over the last 12 months, there are some real indicators that folk in our parish are proud of what we already have. A good example of this was seeing how the community came together over the changes that happened in the United Utilities borehole field. I believe that whilst United Utilities could have handled the consultation much better, they responded to us in an exceptional manner and have committed to continue to do so going forward. This is a classic example of how working together makes a real difference.

We're also pleased to be seeing the Fourways Quarry plans moving forward after all this time, and hope that alongside this, we can make positive changes to the Abbey Arms junction. This is something I hope all parishioners will view positively, but as ever, we welcome your ideas on this. We are also financially contributing to the amended speed limits on Abbey Lane and Station Road, and looking at plans on the A556, although it's very early days for this.

I mentioned earlier about the Frith Avenue

and Bowyer's Waste (Little Wood play area) project; you may be aware that we have some rights over these spaces although do not yet have full lease or ownership. We are considering taking more formal responsibility for these two plots of land, and investing to make them better, local spaces for residents to use. As before, it's very early days and we're keen to avoid making them an attraction for the wider Cheshire area. There's a separate letter and questionnaire included with this newsletter; please do take the time to read it and get back to us as quickly as you can. We won't do anything without your support.

Looking at the slightly bigger picture though, we must be aware as a community that in upcoming years we have the potential for significant development within our parish. We have therefore decided that as a Parish Council we will support the development of a Neighbourhood Plan. This letter is not the space to talk at length about this, however an essential part of the plan's success is the involvement of the community. This is your opportunity to determine the look and feel of our Parish for the next generations, so please do get in touch with me if you would like to be involved.

Finally, I would like to extend thanks to Allan Lewis who has left the Parish Council after many years of service. I would also like to thank Cllr. Martin Latham for taking on the challenge of being a new Parish Councillor, and look forward to working with him for many years to come. We are however a team of twelve but missing one at the moment. I would be delighted if you would consider applying to be part of our team, and make a real difference to where you live. For more details on this, please contact our clerk Joanne Monks, without whom none of this would be possible.

Yours in Delamere & Oakmere

John Edwards
Chair, Delamere and Oakmere Parish Council

the Good Garage Scheme  'Approved Dealer' with a 100% customer rating



NickTomlinCars
www.nicktomlincars.co.uk



YOUR ONE STOP SERVICE CENTRE

Specialists in ALL SERVICING AND REPAIRS

Our Tyre Centre is NOW OPEN

We are now able to supply & fit your tyres - Call for a competitive quote



MOTs

Free pick ups & drop off service or courtesy car

Servicing from £89^{+VAT}

Our service does not invalidate your manufacturer warranty

- TYRES • EXHAUSTS
- CLUTCHES • BATTERIES
- BRAKES • DIAGNOSTICS
- RECOVERY SERVICE

£10 OFF YOUR CAR SERVICE

£10 OFF YOUR NEXT SERVICE

When you book in August or September 2016

T's & C's apply



Follow us on facebook for our latest offers

Chester Road, Delamere
Nr. Northwich CW8 2HB

Tel 01606 889494
Monday to Friday - 9am - 5.30pm. Saturday - 9am - 1pm

England's planning system shapes new development all over the country, aiming to ensure that it is in the public interest, weighing up its economic, environmental and social benefits against any drawbacks. The system plays a key role in making the places where we live and work attractive, vibrant and well designed. It can support the development of affordable housing. It can make sure that new development in historic areas takes into account its surroundings. And although it generally supports development, it can prevent it where it would cause unacceptable environmental damage.

The main component of the planning system is the Local Plan produced by the principal local authority for an area, in our case Cheshire West and Chester Council. In 2011 the government introduced a new component in the form of Neighbourhood Plans, which enable local residents and businesses to have their own planning policies that reflect their priorities. Although these must be consistent with the principal authority's Local Plan, they can add important extra detail that has to be taken into account in planning decisions.

Before their amalgamation both of the former parishes of Delamere and Oakmere produced related documents, in Oakmere's Community-Led Planning Framework and Delamere's Parish Plan. Both of these can be used as a starting point for a Neighbourhood Plan, but do not have the legal force that a Neighbourhood Plan would have.

Neighbourhood Plans have already been developed and approved for eight parishes in Cheshire West and Chester, including Tattenhall, Tarporley and Norley. A further 20 parishes are currently developing such a plan, including Ashton Hayes, Whitegate and Marton, Cuddington, Kelsall and Tarvin. The Tattenhall plan was the first to be approved, after the village had been

selected by CWAC as a pilot for the process. Two Tattenhall parish councillors gave a very informative presentation about their experiences at the May meeting of Delamere and Oakmere parish council, following which the council decided to support the development of a Neighbourhood Plan for Delamere and Oakmere. However, the council cannot do the job by itself. The Tattenhall plan took over three years to produce, and roughly 5000 hours of volunteers' time from a team of about a dozen residents. The process has become somewhat easier since then, thanks to the lessons that have been learned by Tattenhall and other pioneers, but even so it will be a major undertaking.

If you feel that it is important and would like to contribute, please do get in touch with either the Clerk to the Council or the Chairman (see below).

Tattenhall's Neighbourhood Plan encountered strong resistance from some housing developers, as it went much further than the CWAC Local Plan in restricting their ability to build in particular locations. After a Judicial Review their objections were rejected by the High Court, allowing the plan to be officially adopted. Other developers have been much more sympathetic to the plan, and have worked closely with Tattenhall council to undertake development within its guidelines and policies.

The Tattenhall team have no doubt that the work they put in was well worth it. Local knowledge and a sense of what needs to be protected and what needs to change can really make a difference.

If you can spare some time and would like to contribute, please email the Clerk of the Parish Council on delamereandoakmereclerk@yahoo.co.uk or call the Chairman of the Parish Council, whose details can be found on www.delamereandoakmere.co.uk/the-council/.

The Forestry Commission have announced that they will be re-submitting their proposal for holiday lodges in Kingswood and a new visitor centre at Linmere. After an appeal to the Secretary of State the original proposal was refused, on the grounds that it did not warrant development in the Green Belt.

The Forestry Commission will now be presenting additional evidence justifying the proposal, and are confident that this time it will be accepted. For Kingswood the new proposal is much the same as the original one, but for Linmere there are some significant changes. In particular, the poly-tunnels will be re-located to the Lobslack nursery, leaving more space for the new visitor centre and some extra facilities.

Full details were due to be made publicly available on 14th July, just too late for inclusion in this issue. Keep an eye on the website for more information, and the next issue for an update.



ANSWERS TO THE SUDOKU

5	3	4	6	7	8	9	1	2
6	7	2	1	9	5	3	4	8
1	9	8	3	4	2	5	6	7
8	5	9	7	6	1	4	2	3
4	2	6	8	5	3	7	9	1
7	1	3	9	2	4	8	5	6
9	6	1	5	3	7	2	8	4
2	8	7	4	1	9	6	3	5
3	4	5	2	8	6	1	7	9

ANSWERS TO THE CROSSWORD

Across: 4. radar, 6. hairy, 8. valid, 10. cove, 11. eve, 12. console, 13. rota, 14. likely, 15. agree, 17. fox, 19. tie, 20. yard, 21. nipper

Down: 1. brave, 2. Adele, 3. Lancaster, 5. radical, 7. rivalry, 9. average, 16. deer, 18. own, 19. tap

ANSWERS TO THE QUIZ

1. Epsom, 2. Del Boy (Only Fools and Horses), 3. 25, 4. Charles II, 5. Dover, 6. Grease, 7. Rutland, 8. Sir Lenny Henry, 9. King's Oak, 10. A highwayman

ForestNet IT Service

Station Rd, Delamere

Your Local Computer Support Service for the Home/HomeOffice/Small Business

PCs Laptops Tablets
Printers Routers Servers
Troubleshooting/Problem Solving/Upgrades
Software Installs/Upgrades
Anti-virus/Malware issues
Home/Office Networking
Router/WiFi issues
Broadband Security Controls

30 Years ICT experience
Courteous Professional Service

Competitive Rates Fixed Price No Fix No Fee

Email: enquiries@forestnet.co.uk
Tel: 07856 222415
Web: www.forestnet.co.uk



ARE YOU READY FOR WINTER?

GET IN TOUCH TODAY FOR A FREE SURVEY & STOVE INFORMATION

Call us on 01606 866 222 or email info@orchardwoodburners.co.uk

www.orchardwoodburners.co.uk



mackay's
plumbing

- FREE ESTIMATES
- BATHROOM INSTALLATION
- FLOOR AND WALL TILING
- MOBILITY SOLUTIONS
- ALL AREAS COVERED



www.mackaysplumbing.co.uk

info@mackaysplumbing.co.uk

mackaysplumbing@gmail.com



Mackays Plumbing



@mackaysplumbing

Mobile: 07974 668 315 Free phone: 0800 5422 136



MOTORCYCLE CLOTHING & ACCESSORIES

JUMP ON YOUR BIKE

AND HEAD TO

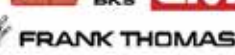
THE BIGGEST

MOTORCYCLE CLOTHING AND ACCESSORIES
RETAILER IN THE UK

27 STORES NATIONWIDE

www.jsaccessories.co.uk

OAKMERE
SUPERSTORE
NEAR YOU!





Brown Hare

www.worldlandtrust.org



Whimbrel

Andreas Trepte, www.photo-natur.de



Whinchat

Wikimedia, Frank Vassen



Stonechat

Wikimedia, Almur Falcon



Little Ringed Plover

Andreas Trepte, www.photo-natur.de



Black Tern

Wikimedia, Andrej Chudý

Several sightings of Brown Hare about in the spring were probably due to it being close to the animals' mating season. I saw hares at the Old Pale, Organsdale fields, Fishpool fields and there were reports of one crossing the road at Crabtree Green.

Spring brought some fantastic birds to the area.

Early May saw 16 Whimbrel, a small relative of the Curlew, at the disused sand quarry at Fourways, possibly resting and feeding during their long flight from Africa to Iceland.

Two Whinchats were also seen perched on top of Gorse bushes at the same site. This is also a migrant from Africa, which we hoped may have stayed to breed.

A male and female Stonechat took up residence but they also moved on.

Two Little Ringed Plover may have nested but no chicks have been seen.

The stars of the spring passage migration were 13 Black Terns. These are mainland European birds moving from their wintering area in Africa to breeding grounds in the Netherlands or the Baltic countries. These birds were taking advantage of the many large meres in Cheshire for feeding. They were also seen at Sandbach Flashes and Newchurch Pool at Whitegate.

On 7th June, "Painted Lady" Butterflies were everywhere. They were seen at Lob Slack Tree Nursery, Old Pale woodlands and feeding on flowers near to Delamere School. These insects cannot over winter in this country due to frosts and other weather conditions so many thousands must have flown or been blown over from the continent. There



Little Ringed Plover

Wikimedia, Alvesgaspar



Nightjar

Wikimedia, Dârzan cîrano

were many reports of sightings from all over Cheshire on that day. Nightjars were calling in the usual forest area (Primrose Hill) on 16th May. This is the earliest record to date. Three birds were seen in flight but there have been reports of up to five individuals being seen.

UPDATE ON THE BOREHOLE FIELD

Having been given its surprise cutting that we reported in the last issue, the United Utilities borehole field has begun to flower again. Species spotted in early June included Bird's Foot Trefoil, Heath Bedstraw and Germander Speedwell as well as buttercups, daisies, red and white clovers, cow parsley and plenty of foxgloves.

As noted in the Parish Council chairman's report, United Utilities were extremely apologetic about their lack of consultation before they cut the field, and have promised that we will continue to enjoy unrestricted access for the foreseeable future.



SXY&FABULOUS
—WELLBEING RETREAT—

WILLINGTON HALL HOTEL
WILLINGTON | TARPORLEY | CHESHIRE | CW6 0NB



Look **SXY** & Feel **FABULOUS**
this Summer at Willington Hall

Skin Peels | Advanced Laser Facials | Injectables |
Permanent Hair Reduction | Manicures & Pedicures
| Make-up | Sports Therapy Massage |
Hypnotherapy & Reiki

Limited Offer: 30 mins Massage for just £25

Quote Del-news07

Call 01829 759332

EASYLIFE

GARDEN MACHINERY

Easylife Garden Machinery sells a whole range of garden machinery
to assist you in making your garden the best it can possibly be.

Our mission is to provide you with good, honest, professional and
impartial advice about the best products and services that are best
suited to your particular requirements.

MANUFACTURERS

Mountfield

STIGA®

VIKING®

STIHL®



TORO®

Cub Cadet®

MITOX

HAYTER

SALES | SPARES | SERVICING | REPAIRS

Easylife GM, Farm Road, Oakmere, Cheshire, CW8 2HB
01606 889833 | www.easylifegm.co.uk



MOWERS & MORE

It can hardly have escaped anyone's notice that the former police station and magistrates' court on Chester Road is in a very sorry state. What was once a building full of character is now a crumbling eyesore, whose roof is full of gaping holes. Until recently at least, anyone walking past or waiting at the bus stop on a windy day would do well to carry a slate-proof umbrella.

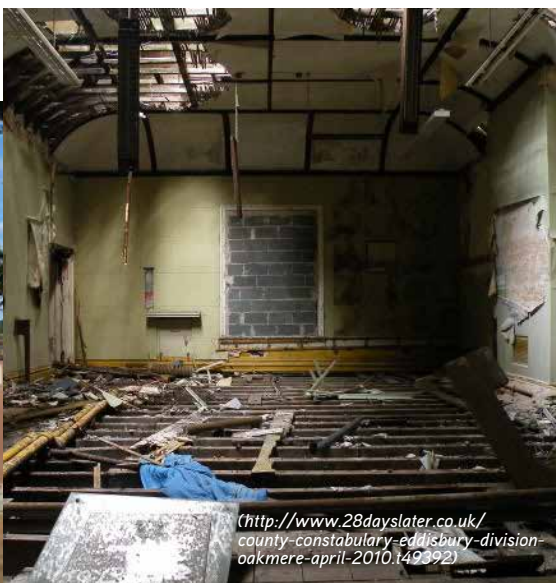


A firm of contractors has now moved in, and the site has been fenced off and cleared. Why? Is the building going to be demolished? Or is it going to be restored?



Part of the answer is related to the falling slates. When we raised the issue with Cheshire West and Chester Council, who have the power to make the owners take action, their first response was that there is no danger to the public as "roof slates can only fall into sealed boundary grounds". When we pointed out that the bus stop is barely ten feet from the building they had second thoughts. They wrote to the owner, whose agent confirmed that remedial work would be undertaken. A few days later the contractors moved in, removed some loose slates, and then proceeded to strip the whole site. Why?

The building is owned by Gerry Yeung, a prominent businessman in Manchester whose family runs the renowned Yang Sing restaurant. In 2013 Mr Yeung was granted planning permission for a much-welcomed proposal to renovate the building and convert it into flats, with ten houses of complementary design to be built on the adjacent land (see Issue 29). However, finance for the proposal was not forthcoming, and the building has continued to deteriorate. This is what the inside looked like when a group of "urban explorers" found their way in.



(<http://www.28dayslater.co.uk/>
county-constabulary-edisbury-division-
oakmere-april-2010.t49392)

(<http://www.28dayslater.co.uk/>
county-constabulary-edisbury-division-
oakmere-april-2010.t49392)



Mr Yeung's agent is a firm of Manchester architects, Jennings Design Associates. Bill Jennings has been extremely helpful in telling us as much as he can about a new design proposal that is currently being developed. If this goes ahead the facade that faces the road will be restored, complete with its historic "County Constabulary" emblem. The extensions at the rear will be demolished,

Allan Haworth *By Robin Ackerley*

One of Delamere's best known and most respected figures passed away in June. Allan Haworth was born in Stockport, attended Stockport Grammar School and went from there to study Agriculture at Reading University.

An accomplished athlete, he represented the university at football, athletics and tennis. It was through tennis that he met a young lady who was reading French at Reading. Joan Frith was the daughter of John and Dorothy Frith of Organsdale Farm, Delamere. Allan and Joan married in 1955 and celebrated their diamond wedding in June last year.

They spent their first three years of married life in Stafford, where Allan worked for the Ministry of Agriculture, before returning to Organsdale. Organsdale Farm had always belonged to the Crown, but the family bought the farm from the Crown Estates in 1964, shortly before John Frith's death in June, 1964, Allan then took over the running of the farm until his retirement in 2002.

During his time at Organsdale Allan did much to add to the farm, purchasing additional land locally. In the late 70s he set up Pig Wood (near to Seven Lows Farm), a pig-rearing establishment which became highly

while the original building at the front will be converted into houses and apartments, using much of the existing structure. The draft proposal also includes more houses of complementary design to be built on the rest of the site. Significant amendments to the existing planning approval will be needed, but to prevent the approval running out altogether a "meaningful start" must be made by October. The vegetation has been cleared as a first step towards that, and Mr Jennings is totally confident that the October deadline will be met. Let us hope that he is right!

Let us also hope that a meaningful start progresses to a meaningful finish, in which we can once again take pride in one of our most historic buildings.

successful. Pigs reared here were (and still are) exported world wide, many being sent to China. Allan continued to play a part in the enterprise long after he left Organsdale and retired to Tarporley.

Allan always had an active interest in the local community; in 1959 he joined Delamere Parish Council on which he served for the next forty years (a bench was placed beside the pond at the top of Waste Lane on the borders of Delamere and Kelsall with a plaque in appreciation of his length of service). In 2001 he received an award from Vale Royal Borough Council in recognition of his contributions to the community.

Among his wide range of local interests his most memorable involved the future of Tarporley War Memorial Hospital. When it was threatened with closure in 1987 the fact that it was saved was in no small part due to the active intervention of Allan Haworth.

After he married he became a member of Kelsall Methodist Church, of which the Frith family had always been devout members, and the church thereafter was to play an important part in his life. It was here on June 28th that he was laid to rest.

LOCAL POLICE DROP IN

Delamere Community Centre

Tuesday
26th July 2016
between 10am and 12pm

With PCSO Ryan Reid

Ask a question, report a problem in your area, mention anything bothering you or simply just meet your local Police Community Support Officer (PCSO).

SUMMER QUIZ

All of this time's quiz have **DEL** or **OAK** in the question or answer, sometimes rather tenuously!!

- On which racecourse is the **OAKs** run?
- How is Derek Edward Trotter better known?
- ADELe**'s first two albums were called 19 and 21; what is the title of her third?
- Which future King of England is reputed to have hidden in an **OAK** tree?
- What is the state capital of **DEL**aware?
- Which musical is set in Ry**DEL**I High School?
- Of which county is **OAK**ham the county town?
- Which comedian created **DEL**bert Wilkins?
- In which village was Crossroads set?
- Who demanded that you 'Stand and **DEL**iver'?

Poetry Corner

Not Really a Gambler
by Thelma Ashbrook

I think I am a pessimist,
I know I won't be lucky,
but then I never take a chance,
I'm really not that plucky.
If there's science in picking numbers
I'm a person that just baffles,
because what is scientific
in picking numbers out for raffles?

Useless me doing the lottery,
a win I might have craved,
I just don't do it any more,
look at the cash I've saved.
We're having bingo here today
but I don't expect I'll win,
I'll just gaze down at my empty purse
and try my best to grin.

I'm really not a gambler,
I'm just a mere survivor.
That I won't win anything this year
I'll bet anyone a fiver.

CROSSWORD & SUDOKU

Across

- Speed trap works either way (5)
- Frightening like a head (5)
- Term for the disabled no longer popular, true (5)
- Sounds like fellow found in small rocky inlet (4)
- First woman the day before (3)
- Musical set up is comfort (7)
- Endless tiff with the reserve list (4)
- Kelly and I confused, probably (6)
- In his vague utterances was detected a fever (4)
- Puzzle wild animal (3)
- Match to do up (3)
- Horse drawn cart comes back to this at the farm (4)
- Small child, one that pinches (6)

Down

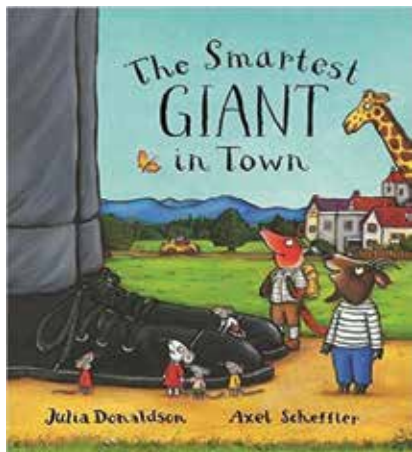
- Note before party - courageous (5)
- Glastonbury singer had elements included (5)
- Red rose bomber (9)
- Revolutionary plant root (7)
- Viral mix up over railway competition (7)
- State duration of life so far - that's mean (7)
- Expensive game animal (4)
- Won for self, if muddled (3)
- Strike lightly forwards or backwards (3)

5	3			7				
6			1	9	5			
	9	8					6	
8				6				3
4			8		3			1
7				2				6
	6					2	8	
			4	1	9			5
				8			7	9

1		2					3		
4				5		6		7	
8	9					10			
11									
				12					
	13								
				14					
15									16
				17	18			19	
20					21				

STONYFORD COTTAGE GARDENS & NURSERY

Stonyford Lane, Oakmere, Northwich. Cheshire. CW8 2TF Tel: 01606 888970
www.stonyfordcottage nursery.co.uk



Open Air Theatre

3rd & 4th August 2016

"The Smartest Giant in Town"

Folksy's musical adaptation of Julia Donaldson's wonderful book will be filled with puppetry, colourful characters and songs, that will have you clapping and singing along!

17th & 18th August 2016

Shakespeare

"As you like it"

This wonderful Shakespeare comedy about life, love, betrayal, faith and death will be filled with Folksy's touch of bold characters, audience interaction and plenty of laughs.

Bring along a Picnic. Limited numbers of tickets available. Book online at www.folksytheatre.co.uk.

Or call at the Nursery. Hurry Tickets selling fast !



Bank Holiday Monday 29th August 2016



Plant Fair



A great event for the plant enthusiasts and keen gardeners.
A good selection of plants from some of the best Nurseries. Starts 10am. FREE ENTRY.

FRITH AVENUE PLAYING FIELD AND WASTE LANE PLAY AREA

To all Delamere and Oakmere Residents

Firstly, thank you for taking the time to read this; we appreciate it. As you may know, Delamere & Oakmere Parish Council are looking for ways to improve our neighbourhood. We currently have an interest in the playing field adjacent to Frith Avenue and Bowyer's Waste (Little Wood play area) but are considering applying to Cheshire West & Chester and the Forestry Commission to take a longer-term interest. This is not guaranteed however we want to get your view before we start any application.

Our aim is to provide two recreational facilities, without encouraging huge volumes of traffic, as we are aware there are already issues with non-resident parking. There are three main themes, as follows:

Provision of static play equipment for children, probably wooden and aesthetically pleasing (noting there is already some play equipment already on the Little Wood play area). These will be selected to suit all ages.

Creation of local wildlife zones to include 'bug hotels' and similar.

Development of ornamental gardens with interesting walkways and hidey-holes where seating can be provided.

Again, it is not our intention to do anything, especially without the support of those who live close to the sites. We would therefore appreciate you taking a few minutes to consider questions overleaf. Your answers will help ensure that any development is valued by local residents, so we'd appreciate as much detail as possible, and thank you in advance for taking the time to get back to us.

Please respond by post or email to the Clerk of the Parish Council:

Mrs J.Monks, 9 Maori Drive, Frodsham, WA6 7BS

delamereandoakmereclerk@yahoo.co.uk

Alternatively, please post it by hand at the Community Centre but marked for my attention.

If you could include your name and contact details in the space provided within the questionnaire, we will make sure we let you know what the plans are, and what timescales we are looking at. Please note that we also will be seeking funding from various bodies and local garden centres / nurseries.

Many thanks,

John Edwards

John Edwards

Chairman

Delamere & Oakmere Parish Council

af

Name	
Address	
Email	
Phone	

(Please note that these will only be used for the purpose of this questionnaire and will not be retained for any other use)

How often do you currently use either of these areas, and what do you do there?

Waste Lane play area:

Frith Avenue playing field:

If improved facilities were available on these areas, would you use them more often?

Waste Lane play area:

Frith Avenue playing field:

What is important to you when we are developing your space, and do you have any ideas you would like to share?

Do you have children or grandchildren who would use the play equipment, and what ages are they?

YES NO Ages:

Would you be interested in being part of the team to plan and deliver this project?


YES

NO



CONTACT NUMBERS

Most services are available from 8am until 7pm, Monday to Friday (excluding Bank Holidays and Christmas).

Adult social care gateway team	0300 123 7034
Benefits	0300 123 7021
Blue badges	0300 123 7040
Building control	0300 123 7027
Business rates	0300 123 7023
Children's Services	0300 123 8123
Cemeteries and crematoria	01244 977381
Charisma card	0300 123 7044
Concessionary travel	0300 123 7025
Council and democracy	0300 123 7028
Council tax	0300 123 7022
Environmental health (including pest control)	0300 123 7038
Fraud hotline	0300 123 7030
HELP (Local welfare assistance)	0300 123 7065
Highways	0300 123 7036
Housing solutions advice line	0300 123 2442
Parish council hotline	0300 123 7049
Parking (general enquiries)	0300 123 7024
Payments	0300 123 7029
Planning and building control	0300 123 7027
Press and media enquiries	01244 972216
Registration of births, marriages and deaths	0300 123 7037
Schools and free school meals	0300 123 7039
Streetscene	0300 123 7026
Waste collection	0300 123 7026
Waste permits/waste passes	0300 123 7042
General enquiries	0300 123 8123
Textphone (BT Text Direct) 18001 	01606 275757

Textphone users can request a British Sign Language support interpreter.



DELAMERE
& OAKMERE

NEWS

ISSUE 37 | SUMMER 2016

Cover Photo: Ferns in the Forest