

ISSUE 39 | SPRING 2017



DELAMERE  
& OAKMERE

# NEWS

## IN THIS ISSUE

**THE BOGGY FOREST  
HIGH POLITICS AT CRABTREE GREEN  
SCOUTING TRAVELS**

# SPOT THE DIFFERENCE!

Find 10 differences between the 2 pictures!



(Answers on page 14)

www.funmagedevail.com

## IN THIS ISSUE

FORTHCOMING EVENTS	3
FOREWORD	7
LETTER FROM THE RECTOR	10
ST PETER'S NOTICE BOARD	11
COMMUNITY ASSOCIATION NEWS	13
ANSWERS	14
CHAIRMAN'S LETTER	15
DR TONY ENTWISTLE	19
A NORWEGIAN ADVENTURE	21
THE BEACH TENNIS CLUB	23
HIGH POLITICS AT CRABTREE GREEN	25
THE ABBEY ARMS	26
WILDLIFE IN THE PARISH	28
THE BOGGY FOREST	29
QUIZ & CROSSWORD	35
POETRY CORNER	37
ROAD SAFETY SCHEME	38

# Forthcoming Events

## ST PETER'S CHURCH, DELAMERE

### SPECIAL SERVICES

#### THURSDAY 9TH MARCH

7pm - Compline (Night Prayer)

#### SUNDAY 26TH MARCH

10.30am - Mothering Sunday, Family Service

#### SUNDAY 9TH APRIL

10.30am - Palm Sunday, Family Service

#### MAUNDY THURSDAY 13TH APRIL

7pm - Holy Communion

#### GOOD FRIDAY 14TH APRIL

10.30am - Morning Worship, followed by coffee and hot cross buns at The Rectory

#### SUNDAY 16TH APRIL - EASTER DAY

8am - Holy Communion

10.30am - Family Communion, with Easter Egg Hunt

### REGULAR SERVICES

#### EVERY SUNDAY

8am - Holy Communion

#### EVERY 1ST SUNDAY

10:30am - Holy Communion

#### EVERY 2ND SUNDAY

10:30am - Family Service

#### EVERY 3RD SUNDAY

10:30am - Holy Communion

#### EVERY 4TH & 5TH SUNDAY

10:30am - Morning Worship

#### EVERY TUESDAY

10:30am - Holy Communion

## THE WOMEN'S INSTITUTE

Date	Speaker	Title	Competition
MAR 14TH	Helen Thompson	The importance of hearing care	-
APR 11TH	Mac Harding	The River Weaver	-
MAY 9TH	-	Resolutions, Mini Show	-
JUNE 13TH	Samantha Smith	Sam's Scales and Tails	-
JULY 11TH	Susan Leicester	An English woman at the White House	Your take on the USA flag

*President: Lorraine Roberts. Meetings are held at 7.30pm, every second Tuesday in the month except for August, at Delamere Community Centre.*

[www.delamereandoakmere.co.uk/delamere-womens-institute](http://www.delamereandoakmere.co.uk/delamere-womens-institute)

[www.twitter.com/delamerewi](https://www.twitter.com/delamerewi)

[www.facebook.com/DelamereWI](https://www.facebook.com/DelamereWI)



In the main church at 10.45am every Sunday morning for a service led by a Methodist Local Preacher or Minister. One service a month includes the sacrament of Holy Communion, led by a Minister (Presbyter). Contacts: Anne or Eric Wright (01829 732950) or Rev Denise Harding (01928 733180).

## DELAMERE AND DISTRICT GOLDEN CLUB

### MARCH 15TH, 2PM

Delamere Derby Race with giant dice

### MARCH 29TH, 2PM

Lorena Anderson: Cookery Demonstration

## EASTER BREAK

### APRIL 26TH, 2PM

AGM plus high tea with cakes

### MAY 10TH, 2PM

Speaker Pete Turner: 'Through the Eyes of a Magician'

### MAY 24TH

Summer Outing: Mersey Ferry "Cruise" and Park Gate for a meal

### JUNE 7TH, 1PM

Summer Lunch

### JUNE 21ST, 2PM

Card Bingo. Please bring a blue item for the sales table

### JULY 5TH, 2PM

Speaker John Baddeley "George Formby: his life story"

### JULY 19TH, 2PM

Members exchange memories

## NEW MEMBERS WELCOME!

We meet every fortnight on Wednesday afternoons, except August, at Delamere Community Centre. No upper or lower age limit! For further information please contact Gloria or Robin Ackerley tel: 01829 752723

# EMMA WILSON FITNESS



## Stay Active

A gentle approach to improving fitness for everyone



## Circuits

Combining cardio, abs, strength & resistance training



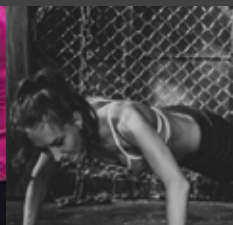
## PureStretch

A unique fusion of pilates, yoga & core



## Buggyfit

Outdoor postnatal exercise where baby comes too!



## HIIT

High intensity interval bodyweight training

FITNESS PROGRAMMES TO SUIT ALL LEVELS OF FITNESS, AGE AND MOBILITY

Call 07971 596529 or visit the website - [www.emmawilsonfitness.co.uk](http://www.emmawilsonfitness.co.uk)



# mackay's plumbing

- 💧 **FREE ESTIMATES**
- 💧 **BATHROOM INSTALLATION**
- 💧 **FLOOR AND WALL TILING**
- 💧 **MOBILITY SOLUTIONS**
- 💧 **ALL AREAS COVERED**



[www.mackaysplumbing.co.uk](http://www.mackaysplumbing.co.uk)  
[info@mackaysplumbing.co.uk](mailto:info@mackaysplumbing.co.uk)  
[mackaysplumbing@gmail.com](mailto:mackaysplumbing@gmail.com)



Mackays Plumbing



@mackaysplumbing

Mobile: **07974 668 315** Free phone: **0800 5422 136**





# DELAMERE MANOR

Overlooking a stunning six-acre lake and set amongst rolling Cheshire countryside, this breathtaking venue, provides complete privacy, outstanding service and luxurious accommodation.



WEDDINGS



CORPORATE EVENTS



PRIVATE PARTIES



VENUE HIRE

To speak to our event organisers, please call us on **01606 261 361**  
or email the team at **[enquiries@delameremanor.co.uk](mailto:enquiries@delameremanor.co.uk)**

**Visit our website [www.delameremanor.co.uk](http://www.delameremanor.co.uk)**

**Delamere Manor, Cuddington Lane, Cheshire, CW8 2TE**

# FOREWORD

Having floated the idea of forming a local history group in the last issue of the newsletter we have now got one, with over a dozen members. In this issue we have a short summary of what it will be doing and how to get involved. The issue also includes two more historical items, one about a significant event at Crabtree Green in the seventeenth century, while the other, from Katie Piercy of the Cheshire Wildlife Trust, looks at how the character of the forest has changed since Norman times. The wildlife theme continues with an update from David Wright on wildlife sightings in the parish, including some superb photos by John Street.

We also have two sharply contrasting pieces about the adventures of local Scouts, produced entirely independently of each other, but with a complementary theme of overseas travel. The Rector gives us a thought for Lent - instead of giving something up, why not do something extra? Our Parish Council Chairman tells us about plans to do something extra with the Frith Avenue playing field, and asks for more ideas on how to improve our neighbourhood. And once again we are indebted to our other contributors for another poem, another crossword and another quiz. Please keep sending them in!

Clive George and Phil Neave



*Carol singing at the Stores on Christmas Eve, in aid of St. Peter's Church, Oakmere Methodist Chapel and Delamere Community Centre. Photo Barry Jones.*



# ABOUT THE NEWSLETTER

Delamere and Oakmere News is published three times a year with the support of the Parish Council. The next issue is due in July!

## ADVERTISE WITH D&O NEWS!

Articles, ideas for articles, news of recent events or forthcoming ones, advertisements, photographs and any other contributions relevant to Delamere and/or Oakmere are all very welcome (inclusion subject to editorial discretion).

The newsletter is available to view on the Delamere and Oakmere Community website and you can also get a PDF file by email (contact us if you would like a copy).

## CONTACTS

Editorial: [do\\_newseditor@yahoo.co.uk](mailto:do_newseditor@yahoo.co.uk)

Advertising: [info@neavecreative.co.uk](mailto:info@neavecreative.co.uk)

## SUPPORT US

All proceeds from advertisements go into the printing of the newsletter, so we really couldn't do this without you. Thank you!



☎ 01606 566 202

✉ [info@neavecreative.co.uk](mailto:info@neavecreative.co.uk)

🌐 [www.neavecreative.co.uk](http://www.neavecreative.co.uk)

WE ARE  
**NEAVE  
CREATIVE**

Print & Digital Design, Oakmere  
Designers of the D&O News



Helping Hands

The Home Care Specialists

Est. 1989

# Do you need a Helping Hand?

Home care in Chester and the surrounding areas, from 30 minutes per week to full time Live-in Care.

Helping Hands has been providing award winning quality help at home since 1989. A family run company we apply our local knowledge and over 25 years of experience to offer you one to one home care that enables you or your loved one to remain at home with compassion and dignity.

Our locally based Carers are able to balance independent living with bespoke care needs by assisting with:

- Housekeeping
- Shopping
- Companionship
- Help getting out and about
- Complex nursing-led care
- Providing a break for an existing Carer or family member
- Personal care
- Support with continence
- Supporting a hospital discharge

If you are looking for extra support for those everyday tasks that are becoming a little more difficult, we're happy to help - from as little as half an hour per week to full time Live-in Care.

To find out how we can help you, call:

**01244 434 890**

or visit: [www.helpinghands.co.uk](http://www.helpinghands.co.uk)



Recruiting  
Carers  
Now

Dear Friends

I have just been walking around the churchyard reading the tombstones and memorials and admiring the abundance of snowdrops harbingers surely of the coming Spring. I particularly noticed during my perambulation that whilst some of the gravestones record the exact date of birth and death others just record the years and the space between is shown with a dash. This reminded me of a poem I found which for copyright reasons I cannot quote in full but it can be found on this link:

<http://www.linda-ellis.com/the-dash-the-dash-poem-by-linda-ellis-.html>

How do we spend our 'dash', the years of our lives? Are they spent in the pursuit of selfish ambition and greed? Or are they spent in loving and giving and sharing not just our money but our friendship, our caring, our concern, our love? Lent starts on 1st March and many people take the opportunity to 'give something up', chocolate, wine or their favourite food. This is fine if it really helps you to come closer to God, I challenge you instead of giving something up why don't you do something extra – write a letter, email or text to someone you haven't seen for a while, read a thought provoking book, resolve to spend a few minutes a day in prayer, read a short portion of the Bible every day (Mark's Gospel is a good place to start), go for a walk and thank God for everyone you meet. Resolve from now on to spend your 'dash' on things that are worthwhile and lasting.

During Lent Compline (sometimes known as Night Prayer) will be said at 7pm each Thursday evening. During this service, we will offer prayers for the community if you would like us to pray for a special need or circumstance then contact me or leave a note in the church porch. The church bell will be rung at 7pm as a witness that the service is taking place. Mothering Sunday on 26th March will be celebrated at 10.30am with a special service of morning worship with posies for the ladies.

We warmly invite you to worship with us at St Peter's, each Sunday there are services at 8am and 10.30am. Usually on the 2nd Sunday of each month at 10.30am, we have a service for all the family. Do contact me by telephone or email if you would like me to visit or pray for you. Brian joins me in sending good wishes and blessings

Revd Elaine

PS If you don't have a Bible of your own and you would like one do please get in touch.

*Revd Elaine  
The Rectory  
Chester Road  
Delamere, CW8 2HS*

# *St. Peter's Notice Board*

## **We welcomed by Baptism:**

December      Samuel Edmund Stanley Bowman

## **We said farewell to:**

December      Anthony Entwistle

January        Barbara Whiteside  
                     Elsie Leech

February       Rose Woodward

## **Lent 2017**

**Lent** begins on Ash Wednesday 1st March and there will be a service of Holy Communion at 7pm.

From 9th March **Compline** (Night Prayer) will be said each Thursday evening at 7pm. The bell will be rung before the service as a reminder that the service is taking place and that prayers are being offered for the local community.

**Mothering Sunday** will be celebrated on Sunday 26th March with a service of Morning Worship for all the family, there will be posies of flowers for the ladies.

**Palm Sunday** – 9th April – there will be a service of Morning Worship with the distribution of palm crosses.

As part of our **Bi-Centenary Celebrations** we are having a 'Festival of Flowers' in the Church on Easter Day and Easter Monday – local residents and organisations are invited to come and decorate the church on Saturday 15th April to celebrate Easter.

For those who like to plan ahead! **Easter Day** in 2018 is 1st April. (DV)



## Easter Services

### Thursday 13th April – Maundy Thursday

7pm – Holy Communion with hand washing and stripping the Sanctuary

### Friday 14th April – Good Friday

10.30am – Morning Worship followed by coffee and Hot X Buns at The Rectory with the opportunity to make an Easter Garden and/or a flower arrangement

### Sunday 16th April – Easter Day

8am – Holy Communion (Book of Common Prayer)

10.30am – Family Communion with Easter Egg Hunt from 10am.

## Bi-Centenary Celebration Special Events 2017 (DV)

### Festival of Flowers

Easter Day 2pm to 5pm

Easter Monday 10am to 4pm

### Friday 26th May from 10am

Coffee Morning & Plant Sale at The Community Centre

### Friday 1st December from 7.30pm

Village Supper and Social at the Community Centre

### Sunday 3rd December at 10.30am

Service of Celebration – 200 years since the Consecration of St Peter's Church Preacher – Rt Revd Dr Peter Forster, Lord Bishop of Chester

**The Summer Fair** will take place on 1st July at the Community Centre and Harvest will be celebrated on 1st October.



It was with great sadness that the Community Association learned of the passing of one of its Trustees, Dr Tony Entwistle, just before Christmas – we send our condolences and best wishes to his widow, Anne.

Our new Booking Secretary, Lorraine Roberts, has her feet firmly under the table and, as a result, we have seen the number of bookings increase over the past few weeks. Apart from our regular clubs and societies (see list below – contact details on the website), the Centre welcomes any local residents to use the facilities, especially at weekends. So, if you have a children's birthday party or other event that you want to celebrate, why not give Lorraine a call on 01606 889188 or check us out on the Community Association section of the Parish Council website.

The next quiz will be held on Friday

5th May; further details will be posted at the Community Centre soon.

## **Clubs and Societies based at the Community Centre:**

- Badminton
- Bridge
- Crown Green Bowls
- Golden Club
- Indoor Bowls
- Military Whist
- Over 60's Keep Fit
- Slimming World
- Snooker
- Whist
- Women's Institute

. . . not forgetting the **Outreach Post Office** every Wednesday and Friday morning.

*Pat Wheeler, Chairman  
Steve Lacey, Treasurer*

## NEWS FROM THE GOLDEN CLUB

We are sorry to announce the passing of two of our very longstanding members: Barbara Whiteside from Mere Crescent and Rose Woodward of Watling Drive. They loved coming to the club and enjoyed all our social activities. They will be greatly missed and we send our sympathy to their families.

On Wednesday 24th May our summer

outing will be a cruise on the Mersey Estuary and along the Liverpool waterfront followed by lunch time at Parkgate. The group rate for the cruise is £7.50 per person. The coach, leaving Delamere Community Centre at 10am and returning by 4pm, is free for members and £5 for non-members.

Please contact Robin or Gloria Ackerley for further details (01829 752723).

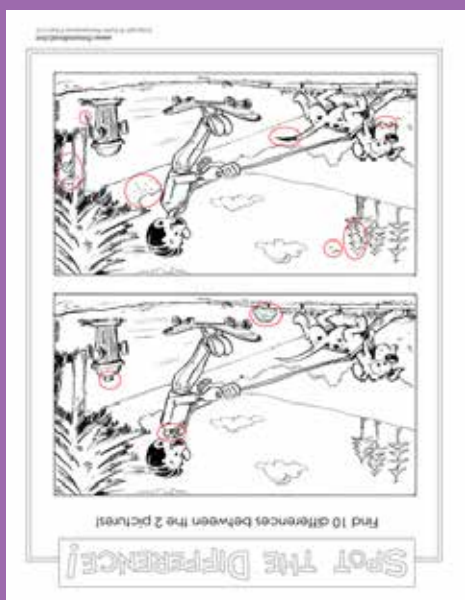
Cheshire Police are offering kits through which you can mark valuable items in or around your home so that they can be traced if they are stolen. The kit includes stickers that can be displayed as a deterrent.

Kits can be purchased by individual households in the Parish at the cost of £9.80 per kit. Residents must provide name, address, daytime telephone number and a cheque made payable to 'Cheshire Police and Crime Commissioner' to Mrs J Monks, Delamere and Oakmere Parish Council, 9 Maori Drive, Frodsham WA6 7BS (closing date 31 March). The clerk will

collate the responses and the cheques will not be cashed until all applications have been received. Residents' details will be passed to Cheshire Police as they will be responsible for distribution of the kits.



## ANSWERS...



### Answers to quiz

1. Crocus, 2. Narcissus,
3. Max Bygraves, 4. Bluebell,
5. Forsythia, 6. Snowdrop,
7. Hellebore, 8. Puschkinia,
9. Iris, 10. Hyacinth

### Answers to crossword

- Across:** 2. nun, 5. batch, 7. sever, 8. uncle, 9. ad lib, 11. early, 14. pentecostally, 15. evoke, 18. nicks, 20. amble, 21. gleam, 22. dozed, 23. ken
- Down:** 1. rapid, 3. uncomfortable, 4. repel, 6. humble, 7. select, 9. ample, 10. lento, 12. relic, 13. yoyos, 16. viola, 17. Edam, 18. need, 19. kites

Believe it or not, despite the unwanted attention from Doris, spring is just around the corner. It makes me smile each year when those first flecks of green appear in the hedgerows, the daffodils and snowdrops peek through our flower beds, and the dawn chorus gets that little bit louder. Happy days indeed. Whilst we're moving on from Storm Doris now, I do think it's appropriate to extend a special thanks to the team at Scottish Power, who restored our power in relatively quick time; this is especially considering their contractors were working in pretty extreme conditions. Thank you.

Another thank you goes to James, who works at the Abbey Arms; without any prompting from the parish council, he raised a petition to be delivered to Cheshire West and Chester Council around road safety for the Abbey Arms crossroads. We met with Highways in the last parish council meeting, and are pleased that at least some work is starting soon. Please rest assured that although we will continue to push for the best, safe solution, there are budget restrictions within Highways. As an aside here, I ate at the new Abbey Arms last week and would highly recommend it. They have done a fantastic job, and the steak and kidney pudding is exceptional.

Looking forward into 2017, I am pleased to advise that following our provisional plans for the Frith Avenue playing field, we now have a residents team and there is quite a bit of excitement about the project. What amazes me is the breadth and depth of experience we have in

Delamere and Oakmere, and trust me, we will need all those skills to get this project delivered successfully; with a healthy dose of enthusiasm of course. Delamere and Oakmere Parish Council have, despite a reduction in our budget, managed to invest in a long-term lease for the site, which enables us to support applications for grants to get this delivered.

This leads me to talk about how else this might be invested in our Parish. There is a small 'pot of gold' from the previous policy from Chester West and Cheshire council which is set aside specifically to invest in projects which really add value to the parish, and as many residents as possible. Another example of this is our shared contribution to the speed reduction on Middlewich Road, Abbey Lane and Station Road. We therefore would love to hear from anyone in the Parish who has some interesting ideas as to what will benefit our neighbourhood; there's no such thing as a stupid idea so please come to share at the next parish council meeting (although emailing your idea to our wonderful parish clerk Joanne Monks beforehand would probably be a good idea; her contact details are on the website).

Whilst I talk about the neighbourhood, I am delighted to say that two more residents have volunteered to be part of the neighbourhood planning team. You may remember that Delamere & Oakmere Parish Council took the decision to support the development of a neighbourhood plan, which means that we can come together to shape the future of our area. It will however take a

real force of effort to deliver successfully; we anticipate needing around 12 people who will take time to shape the plan and deliver it on your behalf. Until we have the right number on board, we cannot start work. Your local knowledge, and your sense of what needs to be protected, and what needs to change, can really make a difference. This letter is therefore a renewed call for as many people as possible to get in touch and lend what time you can over the next 2-3 years in this plan. Please call or email me, or the Clerk of the Parish Council; our details can be found on [www.delamereandoakmere.co.uk/the-council/](http://www.delamereandoakmere.co.uk/the-council/).

There are lots of exciting events happening in Delamere and Oakmere through 2017. I look forward to seeing the Festival of Flowers at St Peters, and of course 'our' Tom Jones giving us the benefit of his dulcet tones in the heart of Delamere Forest. Above all, I look forward to sharing our wonderful parish with all of you and in the fullness of time getting to know you all.

Yours in friendship

John Edwards

Chair, Delamere and Oakmere Parish Council

## LATEST NEWS...

### NEW HOUSING DEVELOPMENTS

**Marley site.** For those of you who have not had a leaflet about the consultation event in the Community Centre on 9th March, the proposal for up to 180 new homes on the former Marley site is under way again. The development company, Laurus Homes, intends to submit a detailed planning application to CW&C in the near future, in line with the outline application that has already been approved (see issue 30 of the newsletter).

**Magistrates' court.** There has been no progress on this since the last issue.

The architect tells us it is "on hold", waiting for "lots of complex issues" to be resolved.

### DEFIBRILLATOR

The British Heart Foundation has provided a grant to install another defibrillator in our community (in addition to the one at the Community Centre).

The new location will be soon be announced on the community website.



# Hollybank

VETERINARY CENTRE



- ◆ *Independent small animal veterinary hospital*
- ◆ *Caring for pets and their owners*
- ◆ *24hr emergency service on site*
- ◆ *Exceptionally high standards of care, hygiene, facilities and equipment*
- ◆ *Professional, friendly, welcoming & kind*
- ◆ *Part of the local community*



584 Chester Road | Sandiway | Cheshire | CW8 2DX

Tel: 01606 880890 | [www.hollybankvets.co.uk](http://www.hollybankvets.co.uk)





THE HOLLIES  
FARM SHOP

# SPRING IS HERE AT THE HOLLIES

---

MARKET FRESH  
FRUIT & VEGETABLES

SPRING FLOWERS  
EASTER GIFTS & CARDS  
SPRING LAMB  
60+ LOCAL SUPPLIERS

TARPORLEY ROAD, LITTLE BUDWORTH, CHESHIRE CW6 9ES  
01829 760414  
[WWW.THEHOLLIESFARMSHOP.CO.UK](http://WWW.THEHOLLIESFARMSHOP.CO.UK)

# DR TONY ENTWISTLE

Dr Tony Entwistle's funeral was held at St Peter's Church in December. His long service as a Trustee of the Delamere Community Association was just one small part of a distinguished life.



After obtaining a medical degree he completed two years of National Service in the Royal Navy. His first appointment was as a very junior Surgeon Lieutenant on the aircraft carrier HMS Illustrious, where his official duties included holding the key to the ship's drinks cabinet. Following National Service Tony qualified with a diploma in obstetrics, prior to entering general practice. He worked as a GP in Widnes for 34 years, where he is remembered for his kindness, his patience and his deep knowledge of his patients and their problems. On retiring he moved to Delamere, where he continued to work as a GP locum.

While working as a volunteer at Tatton Park and the Quinta Arboretum, Sir Bernard Lovell (of Jodrell Bank fame, and creator of the arboretum) asked for

Tony's help in typing up a hand-written card index of the very many trees that had been planted over the years, prior to computerisation of a catalogue to be held by Tatton Garden Society (to which Sir Bernard, by then in his nineties, had handed over care). As the list was in the botanical Latin, and not necessarily in the most legible of hand-writing, it was thought that a doctor would be particularly well qualified for the task.



Alongside his professional work Dr Entwistle was a dedicated scout leader, rising to become International Commissioner, co-ordinating visits abroad and visits to the UK from overseas scouts. In recognition of this work he received the Scout Association's highest award, the Silver Wolf Award, "for services of the most exceptional character".

In Tony's memory Anne Entwistle has given us the following account written by Dr Entwistle himself, about a memorable episode in his scouting life.

# MEETING THE LOCALS

by *Tony Entwistle*

We (a party of Scouts) were camped high in the Spanish Pyrenees. It was a warm sunny evening, the clear sky a presage of a chilly night ahead. The boys were cooking supper on their primus stoves - fried slices of chorizo and mash from reconstituted dried potato powder; not very exciting, but it would be two days to the next village. I surveyed from my tent the vast panorama of mountains and valleys, the sinister twin spires of the Picos Encantados in the distance. There was not a sign of human habitation, nor had we seen a soul since climbing steeply up from the last village in the valley below early that morning. It was like being on a deserted planet, I mused; just the site for a Dr. Who episode. I could imagine his telephone-box time-machine suddenly materialising before me.

Equally dramatically he appeared with his herd of goats. He stopped some distance from us and stared. I went over to him across the rough terrain. Perhaps he would like some coffee with us, I thought. He was a smallish man, intensely bronzed. He wore a goatskin jacket and carried an ancient leather bag from his shoulder, and a brass-handled stick.

'Buenas tardes, Senor', I said. We shook hands. He said nothing, just stared at me. Not a hostile expression, more a no-nonsense sort of look with a distinct undersense of wariness, as if he was not sure we were normal, doing what we were.

Must make some conversation, I thought. 'Es muy hermoso y tranquilo aqui', I said. Nothing for a while. and then at last he spoke. 'Ingles?' he said. 'Si, si, Senor', I replied. 'Somos desde Liverpool'. No flicker of response; strange, I thought, for this was the time when Liverpool was much better known globally than Manchester United.

He slowly opened his bag and handed me a hefty bunch of letters. I was amazed - they were indeed our mail, addressed as planned poste restante to a small town we had passed through two days earlier (and found nothing for us).

A medley of thoughts raced through my brain. How on earth had he found us? - we had told nobody our route (I myself was not that sure where we were). 'Muchas gracias, Senor' I said. 'Pero, como.....' I started hesitantly, but he had already turned about and was striding away.

'Adios', I shouted. By the time I had returned to the tents, and looked back, he and his goats had vanished for ever. But long will I remember our goatherd postman.

# A NORWEGIAN ADVENTURE

Anna Holland of Station Road is one of thirty members of the Mersey Weaver Scout group who are working hard to be able to travel to Norway in July, for the most northern Jamboree in the world. About 7000 Scouts from around the world will spend a week camping in the midnight sun, and the following week in the homes of Norwegian families. One of the most challenging events at the camp will be an 18 hour hike over the fjords, for which they have been training with gruelling hikes in the Welsh hills, learning individual navigating and team-leading skills, and building up stamina and walking technique. During the second week they will learn first-hand about the culture and traditions of Norway.

With air fares and equipment to be bought the Jamboree comes at a price, of

over £1,000 for each of the 30 Scouts. After five months' hard work they have raised over £18,000 and have organised a number of fundraising events to raise the rest. These include a 'Fun Day' at Helsby Sports Club, bag packs, a Norwegian Ball to celebrate Norway's National day, and a sponsored swim that will cover the distance of the English Channel.

If you would like to attend any of the events, help out with a sponsorship or get more information go to:

<https://nord2017.mwscouts.org/>

Anna has promised to give us a report of her journey for future issues, so we had better make sure she gets there!

## LOCAL HISTORY GROUP

Two suggestions were floated in the last issue, to produce an electronic version of the book edited by Cheshire historian Frank Latham, "Delamere: the history of a Cheshire Parish", and to form a local history group. Both have now happened. The book is on the website, along with a few other historical notes (<http://delamereandoakmere.co.uk/the-history-of-the-parish/>), and over a dozen people got together in January for a first informal meeting of the group.

Plans are already afoot for two local history walks in the parish, and members have started work on a wide range of other ideas. Another meeting will be held during March, after which the group will probably get a bit more formal. If you are interested in joining in contact Clive ([clivegeorge@btinternet.com](mailto:clivegeorge@btinternet.com)).

# nicola gibson

ARCHITECTURAL  
DESIGN

ONE OFF HOUSES | EXTENSIONS & REMODELLING | RESIDENTIAL DEVELOPMENTS | GARDEN ROOMS



All drawings prepared for and submitted to the Planning and Building Control departments on your behalf, including Listed Building and Conservation Area consent where necessary.



Contact Nicola Gibson to discuss your next project.

Tel: 01606 301171 | Mobile: 07813 034552 | Email: [nicola@njgdesign.co.uk](mailto:nicola@njgdesign.co.uk) | [www.njgdesign.co.uk](http://www.njgdesign.co.uk)





## **An exciting new community facility comes to Delamere!**

Abbey wood at Delamere is to be the home of a new Lawn Tennis Club opening its doors to new members this summer.

Carol Evans, a Delamere resident is a Trustee and long standing member of the committee. Announcing the launch of the new club, Carol said,

*"I am really excited about having a tennis*

*club in Delamere. It is something that people have been asking about. Grass tennis courts are pretty rare these days and it is a beautiful setting in which to relax and play tennis."*

The name of the new Club is The Beach Tennis Club. The facilities will include two newly laid grass courts and a brand new timber pavilion. Derek Barnett is the Chairman of the Club,

"People often ask where the name the Beach Tennis Club originated. The Club was founded in 1936 and took its name from an area in Northwich known as the Beach. In recent times the development of all weather playing surfaces has seen a decline in the number of grass tennis courts and the Club has sought to relocate to attract new members. The opportunity to play at Abbeywood became available to us at the kind invitation of Mr Harry Rowlinson and we are delighted to have such a wonderful location and first class facilities. It has taken a lot of hard



work and time to prepare the courts. It has involved levelling the land, erecting new perimeter fencing and seeding and treating the two grass courts. David Wright, from Delamere is a turf specialist and has been responsible for developing the new courts and maintaining them to an excellent standard."

Carol added,

*"We have club sessions on a Wednesday evening and Saturday afternoon throughout the summer. On Saturdays we have also been known to have a break to enjoy a piece of cake and a cup of tea to complete the idyllic picture."*

The Beach Tennis Club is an ideal place to enjoy competitive social tennis and is a great opportunity for people who may have played previously but are looking to return to tennis or perhaps wanting to play on a more forgiving surface. The grass tennis season starts on **Saturday 6th May.**

## A warm welcome awaits new members of all ages and levels of ability.

If the thought of warm summer afternoons and evenings playing tennis in friendly company and with the sound of birds singing and the scent of freshly mown grass appeals to you, then get in touch!

## Interested in coming along and seeing the club?

Anyone interested in coming along to see what the Club has to offer should contact either Carol on **01606 888254** or the Club Secretary Sheila Barnett on **01606 42053.**





# HIGH POLITICS AT CRABTREE GREEN

For one brief moment Crabtree Green (the patch of land around the junction of Stonyford Lane, Hogshead Lane, and the A556) played a somewhat inglorious but nonetheless significant part in British history. The date was 12th September 1682. The event was a horse race.



Horse racing was at the time the biggest spectator sport in the country (after football it is still the second biggest). One the craftiest political campaigners of the time, Thomas Wharton (eventually to become the first Marquess of Wharton), had mastered the art of using sporting heroics to woo the massed crowds. Their hero was King Charles II's illegitimate son the Duke of Monmouth, the chief figurehead of Wharton's campaign to keep Britain out of Europe. 'Europe' then meant Rome rather than Brussels, and popery rather than bureaucracy, but opinion for and against was even more sharply divided than it is now.

The two sides in Parliament labelled each other with two old terms of abuse, "Whig" (meaning horse-thief), for those wanting out, and "Tory" (meaning papist outlaw), for those wanting in. The Tories had never forgiven Henry VIII for breaking away from Rome in the original Brexit, and were hoping to get back in when the king's brother

James, who had converted to Catholicism, succeeded to the throne. The Whigs had other ideas, and fostered the suggestion that the Protestant Duke of Monmouth's mother had secretly married Charles II, so that he was the legitimate heir. After a failed attempt to get James excluded from the succession through an Act of Parliament, Wharton intensified his campaign to stir up popular support for Monmouth.

Wharton was the owner of a horseracing stud, and Monmouth was an accomplished rider. As part of his campaign Wharton organised a race at Wallasey, and entered one of his best horses in Monmouth's name. The Tories got wind of this, and sponsored a rival meet in Delamere Forest. The record doesn't say exactly where this was, but it was almost certainly at Crabtree Green, which had been used as a racecourse since the middle of the century. When Wharton heard about this he muscled in on the forest event by entering another of his best horses, again in Monmouth's name. The Monmouth horses won both races, with Monmouth himself in the saddle at Wallasey. When the news reached Chester bonfires were lit, church doors were broken open to ring the bells, and the streets were filled with cries of "Monmouth, Monmouth!".

The young duke's soaring popularity didn't do him any good. Three years later he was dead. His attempt at a full scale rebellion failed and he was executed. But Wharton and the other Whigs still got the pro-Brexit monarch they wanted. They got two. Barely six years after the horserace at Crabtree Green, Charles II had died, the Catholic James II had fled the country, and his Protestant daughter Mary was sharing the throne with her husband William of Orange.

And Crabtree Green? It continued to have race meetings until the early nineteenth century.

For those of us who appreciate having a friendly meeting-eating-drinking place on our doorstep the re-opening of the Abbey Arms in February was a significant event. The new owners, Manchester-based family brewery J W Lees, should be much better placed to capitalise on the special character of the pub than the remote national organisation that owned it before. The company's Managing Director William Lees-Jones is even more local, living in Oakmere only a couple of miles from the pub. At the pulling of the "first official pint" he promised to leave General Manager Peter Clough to get on with the job, while continuing to frequent the Fox and Barrel as his own favoured watering hole. Even so we can be sure he will call in now and again to keep an eye on things.



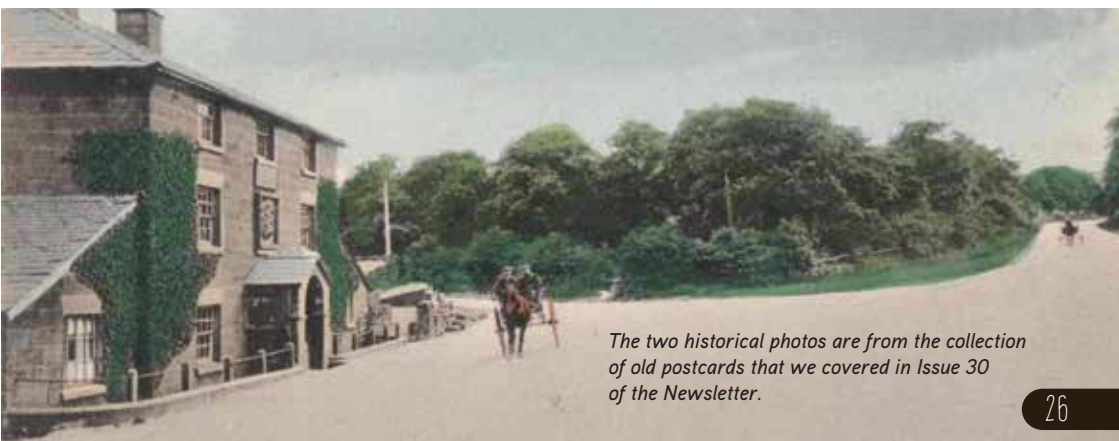
While the new owners have completely refurbished the interior of the building, its

external appearance has changed little in the past 200 years. That's more than can be said for the traffic negotiating the crossroads!



Built in 1818, the pub is one of the few listed buildings in the parish (along with its stables). It is built of the local red sandstone, believed to be from the quarry on Eddisbury Hill (along with the stone for Vale Royal Abbey).

The Vale Royal Estate owned the inn until the whole estate was sold in 1928. It was described in 1890 as having "good accommodation, beds for three travellers, stables with ten stalls, and facilities to provide refreshments for forty persons". The county magistrates held their monthly sessions there until the nearby courthouse was built in 1892.



*The two historical photos are from the collection of old postcards that we covered in Issue 30 of the Newsletter.*



# Kelsall Hill British Eventing

**21st to 23rd April 2017**  
**from 10am**

Kindly  
sponsored by  
Istanbul BBQ  
Chester



**Over 30 Equine Trade Stands!**  
*Parking just £10 per car*

**HALF PRICE ENTRY**  
**to Kelsall Hill Horse Trials**

on production of this voucher



**Kelsall Hill Equestrian Centre**

Organsdale Farm • Middlewich Road • Kelsall • Tarporley • Cheshire • CW6 0SR

Tel: 07809 689972 • Email: [admin@kelsallhill.co.uk](mailto:admin@kelsallhill.co.uk)

[www.kelsallhill.co.uk](http://www.kelsallhill.co.uk)

**Come and see top  
riders from all over  
the country!**

**Face Painting (Sat/Sun)**



**Refreshments Stands**



**Equestrian Trade Stands**



- Dressage
- Show Jumping
- Cross Country

Only valid for one car

*Valid from*

*21st-23rd April 2017*



Spring creeps up on you in no time. I don't think we have had a winter!

Bumblebees were on the wing in early February and birds were building and repairing nests. The sun was shining but it was still very cold and the winter visitors are still with us.

Nationally, this has been "a waxwing winter", when this special visitor, the Bohemian Waxwing invades the country. The name refers to the nomadic movements of winter flocks.



These very colourful "Starling sized" birds tend to leave Scandinavia and Northern Russia either when the weather is really hard or when there is a lack of food. They feed on berries and will quickly strip a bush of Hawthorn or a Rowan tree of its fruit .

They have been moving across the country east to west over the last two months. These eruptions, as they are called, happen every two or three years and can involve large numbers of birds.



Local sightings were first reported at Crown Cottages, Oakmere and then at Frith Avenue in late January, when sixteen birds were recorded. The same flock then moved to Kelsall where they stayed for a week (see photos courtesy of John Street). By mid-February, a flock of some 40 birds were seen at Greys Gate, near to Haworths Fruit Farm, on the Yeld.

Other interesting birds seen in the area, were a large female Peregrine Falcon having a dispute with a Buzzard at Lob Slack nursery and a flyover flock of 130 Pink Footed Geese.

# THE BOGGY FOREST

*from Katie Piercy, Cheshire Wildlife Trust*

Did you know the words 'wood' and 'forest' were once not as synonymous as they are today? Like many of our words they originated from languages from across the shore and were brought to Britain by settlers, traders and conquerors. The word 'wood' came originally from a Germanic language, having the same root as the modern German word 'Wald' and meant an area of trees, much the same as it does today. 'Forest' however, brought to England by the Normans, had quite a different meaning. Once, 'Forest' would have denoted an area beyond the enclosures, where deer and other wild grazing animals were allowed to roam. Literally translated it can mean 'outside'. But why does all this matter?

Well where it starts to get interesting is where our modern notions of a forest, filled with thick stands of trees, butts up against the historic meaning of forest, an area for deer and game. This particularly applies to the ancient Royal Hunting Forests scattered across the country, from the New forest, to Sherwood Forest, to our very own Delamere Forest, which was once part of the Royal Hunting Forests of Mara and Mondrem. These forests were created by the Normans as areas for the hunting of large game by the royal family and aristocracy of the times. For common people the areas had strict laws preventing them from hunting game, enclosing the area, or even cutting down trees. However something which is often misinterpreted is that

these areas were entirely wooded. In fact large areas of open heathland, grasslands and mosslands existed within these forests, ideal for the large grazing herds that inhabited them. Wooded areas were also common but not necessary for the area to be designated a Hunting Forest.



*A forest mossland. Photo by Andrew Walmsley.*

Today it is believed that the forest of Mara was only sparsely populated with trees, with Delamere in particular possessing large open areas due to the presence of the meres and mosses. These boggy sites were mostly unsuitable for trees to take root in and had been present in the landscape since the end of the last Ice Age approximately 15,000 years ago. Created when a large glacial ice sheet began to retreat north due to the warming climate, the meres and mosses formed as sediment-filled water washed down from the melting ice sheet and resulted in a glacial lake being created, a delta within which became modern-day Delamere. Glacial moraines and kettle-holes (depressions

in the landscapes where large blocks of ice were left stranded by the retreating glacier) created an undulated terrain ideal for the formation of the meres and mosses, which sprung up in their hundreds across this area.

Alongside the meres and mosses there were areas of lowland heathland. Over the last 100 years we've lost 84% of our lowland heathlands, which are important areas for all kinds of amazing wildlife from cuckoos to adders to a vast array of butterflies, spiders and other insects. Today little of this heathland remains, and many of the meres and mosses were lost due to drainage.



*A grass snake in the forest. Photo by Chris Gilbert.*

After the removal of forestry law, which protected it from enclosure, in 1812 Delamere drastically changed. Many of the meres and mosses were drained and large areas of oak and sweet chestnut were planted. Over the next few hundred years the forest was replanted with various tree species from Scot's pine to Hemlock and today it is a commercial forest, managed for recreation and the production of timber. Although there are some small areas of ancient woodland remaining most of the trees we see today have been planted, or have naturally grown up, since forestry law was removed from the area.

Today many species benefit from this large wooded area, but until recently those species which relied on the open areas, the heathlands, grasslands and meres and mosses, had dwindled or disappeared. However, since the 1990s restoration work has been ongoing to bring back some of these rare and valuable habitats into the forest, such as Great Blakemere moss which the Forestry Commission began restoring in 1998. For many this can seem like a big change in the character of the forest, however for the forest itself, which was once a mixture of trees and open spaces, it's actually a step back in time, back to the days when Delamere was a place 'outside' the normal landscape, when it was a Royal Hunting Forest.



Sxy & Fabulous

• AESTHETICS

• BEAUTY

• WELLBEING

Aesthetic Procedures

Skin Peels

Anti-Ageing Treatments

Manicures & Pedicures

Massage

Laser Hair Removal

Semi-permanent makeup

Willington Hall, Willington,  
Tarporley, Cheshire, CW6 0NB

**01829 759332**

**[www.sxyandfabulous.co.uk](http://www.sxyandfabulous.co.uk)**





MOTORCYCLE CLOTHING & ACCESSORIES

OAKMERE  
SUPERSTORE  
NEAR YOU!

JUMP ON YOUR BIKE

AND HEAD TO

THE BIGGEST

MOTORCYCLE CLOTHING AND ACCESSORIES  
RETAILER IN THE UK

28 STORES NATIONWIDE

[www.jsaccessories.co.uk](http://www.jsaccessories.co.uk)







## Oakmere Cricket Club

Oakmere CC have Senior Mens, Juniors and Ladies teams playing weekend and mid-week matches and Qualified Coaches provide structured training sessions across all teams.

New Players (male and female, all ages) and Spectators are always more than welcome!

This season's outdoor training will commence as per below with  
Matches starting in mid-April:

- Senior Nets: Tuesday 11th April 6.30pm
- Junior Nets: Wednesday 12th April  
(Under 11's 6pm – 7pm / Under 13's & 15's 7pm – 8pm)
- Ladies Nets: Monday 24th April 6.30pm

### Also coming this season...

- Girls Taster Sessions for School Years 4-6: Fridays 7.15pm – 8.15pm, from 23rd June to 14th July
- 'Minis' (sports and cricket skills for 5 – 8 years olds): Fridays 6pm – 7pm, from 26th May to 14th July



Cheshire Cricket League



CHESHIRE WOMEN'S  
CRICKET



If you are interested in playing cricket or want to find out more about the Club please contact  
[secretary@oakmerecc.co.uk](mailto:secretary@oakmerecc.co.uk) for more details or visit our website at [www.oakmerecc.co.uk](http://www.oakmerecc.co.uk)

Location: Overdale Lane, Oakmere, Northwich CW8 2EL

## STONYFORD COTTAGE

### GARDENS - NURSERY - TEA ROOM

Stonyford Lane, Oakmere, Northwich. Cheshire. CW8 2TF Tel: 01606 888970  
[www.stonyfordcottagegardenursery.co.uk](http://www.stonyfordcottagegardenursery.co.uk) Open – Tuesday to Sunday 10am to 5.00pm



# Spring Plants Now Available

Stoneware Troughs Pots Wind Sculptures

Plant Fairs - Workshops - Theatre Shows - Please see website for details

# David Hodkinson Landscaping and Garden Maintenance Service

from small jobs to large

25 years' experience in the garden  
industry (formerly Acton Bridge  
Garden Centre Proprietor)

please call Dave on  
**07791414919 / 01606 624364**

email:  
**gentlemengardeners@gmail.com**



**01606 882 219**

## SpannsGarage

*Motorcycles, Scooters, Trykes, Quads  
Cars, Vans and Three Wheel Cars*

*MOTs, Tyres, Servicing, Repairs, Air  
Conditioning, Diagnostics*

*Collection from local area*

### Opening Hours:

8.30 am – 5.30 pm Monday to Friday  
8.00 am – 1.00 pm Saturday (MOTs only)

**Tel:** 01606 882219

**Fax:** 01606 881700

Email: [spanns.garage@zen.co.uk](mailto:spanns.garage@zen.co.uk)  
[www.spannsgarage.co.uk](http://www.spannsgarage.co.uk)

**Dalefords Lane  
Whitegate  
CW8 2BW**

## ForestNet IT Service

Station Rd, Delamere

*Your Local Computer Support Service for  
the Home/HomeOffice/Small Business*

**PCs Laptops Tablets**

**Printers Routers Servers**

**Troubleshooting/Problem Solving/Upgrades**

**Software Installs/Upgrades**

**Anti-virus/Malware issues**

**Home/Office Networking**

**Router/WiFi issues**

**Broadband Security Controls**

**30 Years ICT experience**

**Courteous Professional Service**

**Competitive Rates Fixed Price No Fix No Fee**

**Email:** [enquiries@forestnet.co.uk](mailto:enquiries@forestnet.co.uk)

**Tel:** 07856 222415

**Web:** [www.forestnet.co.uk](http://www.forestnet.co.uk)

## Club Class

**24-7 Cheshire Taxi**

**01606 46666**

**Your number one choice for:**

**Shopping Trips**

**Nights Out**

**Airport Transfers (single & returns)**

**Executive Travel (on request)**

**Wheelchair Transport**

**Account & Corporate Bookings**

**School Runs**

**4, 5, 6, 7 & 8 Seat Vehicles**

**Special Events**

**Train, Boat & Coach Rendezvous**

**We are Always Open  
& Always Happy To Help**



**FREE**  
to a good home

Unopened  
**Canon 540 XL**  
printer ink

Please contact Gloria  
**01829 752723**



**nct**  
Nearly New

New bigger venue

Loads of parking

**SALE**

**Bag a bargain**

Top quality baby & children's clothes, toys, books, DVDs, maternity & nursery equipment at bargain prices

**Sunday 7<sup>th</sup> May 2017**  
**1.30-3pm**

**The Grange Junior School**  
**Beechwood Avenue, Hartford, Northwich, CW8 3AU**

£1 entry donation per adult    Contact us at [nns.northwich@nct.org.uk](mailto:nns.northwich@nct.org.uk)  
1pm entry for NCT members    [www.facebook.com/northwichnctnns](http://www.facebook.com/northwichnctnns)  
No prams inside sale room - indoor pram park available (at own risk)  
<https://www.nct.org.uk/branches/nct-northwich>

©2016 NCT, 30 Eastern Street, London, W4J 2PB. Registered charity numbers: England and Wales: 801395, Scotland: SC041188. Limited as a company: England and Wales 2570073

## MARCH QUIZ *by Steve Lacey*

*(Answers on page 14)*

Ten questions about plants you might find in your Winter and Spring garden.

1. The stamens of which flower are harvested for saffron?
2. Who, in Greek mythology, fell in love with his own reflection?
3. Who took Tulips from Amsterdam to No 3 in the charts in 1958?
4. Which native British flower is under threat from its larger, Spanish relative?
5. Which shrub, with yellow flowers, was named after the ancestor of a popular entertainer?
6. Which early flowering plant is from the genus *Galanthus*?
7. Which plant is also known as the Christmas Rose?
8. Which plant was named after a Russian botanist, although you might think it was in honour of a Russian author?
9. Which plant takes its name from the Greek word for rainbow?
10. What was the name of Richard Bucket's wife?

If you enjoyed answering these questions, why not come along to the **quiz at the Community Centre on 5th May**? Details at the Centre or from Steve Lacey on 01270 780777.

# CROSSWORD

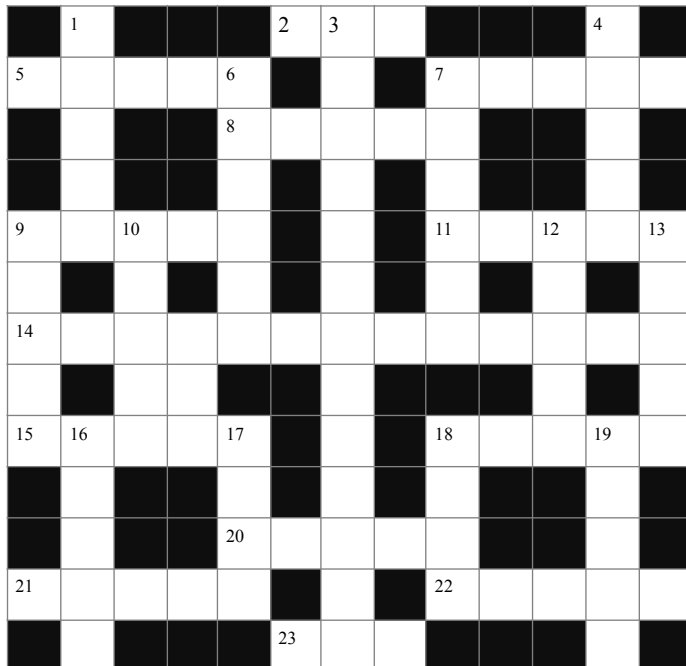
by YETI

## Across

2. Heard no devotee (3)
5. Sort of sandwich for striker followed by companion (5)
7. Second, always second, cut off (5)
8. Relative pawn agent (5)
9. Not BC, this small library, say what you want (2, 3)
11. Like a peer, in good time (5)
14. Postal lycee scattered round books, in a fundamentalist way (13)
15. Inspire first woman to include, all right (5)
18. Pinches old devils (5)
20. Drop right out of walk, or walk more slowly (5)
21. Shine in a tangle among plants (5)
22. Flattened butter, escaped, slept lightly (5)
23. Know maverick politician (3)

## Down

1. Tap passport, quick! (5)
3. Uneasy international body, endless sympathy on board (13)
4. Drive back agent with the Spanish (5)
6. Lowly murmur, take a minute, add an hour (6)
7. Choose elite (6)
9. Headless specimen is sufficient (5)
10. Little Leonard to play slowly (5)
12. What remains when muddled cleric loses head (5)
13. Toys that keep coming back (5)
16. Flower in the orchestra (5)
17. Electronic barrier enjoyed by the Dutch (4)
18. Want to hear dough work (4)
19. To fly them, little Christopher backed wind from France (5)



(Answers on page 14)

# Poetry Corner

## Help Needed

*by Thelma Ashbrook*

I think I need a bit of help,  
my body's quite unfit.  
When I should be doing yoga  
I want to sit and knit.

Every sudden move I make,  
my bones give out a 'crack'.  
My skin, which should be smooth and taut,  
in places hangs quite slack.

I'm getting proper bingo wings.  
I need to exercise,  
to get a flatter tummy  
and maybe firmer thighs.

What is a hungry girl to do  
while there's mince pies in the tin?  
She knows she really should be good  
but it's far more fun to sin.

Perhaps I'll buy a size twelve dress  
and work hard to get in it,  
but work gives me an appetite,  
I get hungrier by the minute.

Why not stick to a healthy diet?  
But I'll need some comfort food.  
If I go out for tea and am offered cake,  
to refuse would be terribly rude.

"Don't want to be fat. If I can't be slim  
I'll stay somewhere in between  
As long as I'm feeling happy  
What's wrong with a size fourteen?"

## We'll be walking

*by Fiona Goodier*

Come rain or shine  
Come drizzle or mizzle  
Come fog or muddy bog  
We'll be walking

Come forest or park  
Come light or dark  
Come sleet or snow  
We'll be walking

Come hill or moor  
Come feet so sore  
Come thunder 'n' lightning  
We'll be walking

Come track or trail  
Come wind or hail  
Come hot or cold  
We'll be walking

Come body so weary  
Come sounds so eerie  
Come breeze or clouds  
We'll be walking

Come beach or lawn  
Come dusk or dawn  
Come sand or stone  
We'll be walking

Come town or city  
Come village so pretty  
Come frost or ice  
We'll be walking

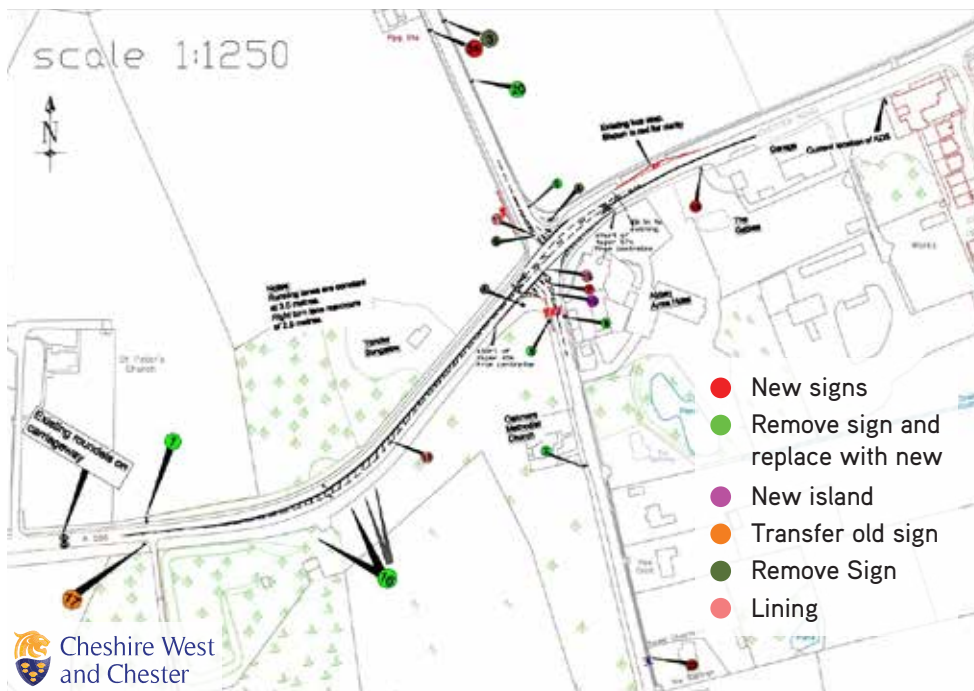
Come pain or sorrow  
Come today and tomorrow  
Come whatever may  
We'll be walking everyday



Extending the 40mph limit from Station Road all the way to Hatchmere will help to address safety concerns for visitors walking over the railway bridge and crossing the road from the Whitefield car park. The safety of pedestrians on Abbey Lane will be addressed through a

Meanwhile there will be a whole host of new signs and road markings on the A556, aiming to improve safety at the crossroads.

Some of the new road markings aim to reduce the speed of traffic, while others will improve visibility for vehicles emerging from Abbey Lane. It remains to be seen whether this will be enough to make the junction as safe as we would like. The project will consume a major proportion of CWAC Highways' vastly reduced budget, so we can perhaps be grateful that they are at last doing something.





DELAMERE  
& OAKMERE

# NEWS

ISSUE 39 | SPRING 2017