

ISSUE 46 | SUMMER 2019



DELAMERE  
& OAKMERE

# NEWS

## IN THIS ISSUE

DELAMERE'S DRAGONS  
HELPING OUT IN ROMANIA  
HISTORY OF THE MAGISTRATES' COURT

## Australia calling!

The Pironne family from Ayr, Australia, whose ancestors were named Gleave were recently visiting the churchyard at St Peter's looking for family graves.

If there are any relatives still remaining in the area of Delamere please contact the family:

Rhonda Pironne  
36 Old Clare Road  
Ayr 4807  
Queensland  
Australia

rhonda.pironne@my.jcu.edu.au  
0420236706



Cheshire  
Constabulary

## Local Police Surgery Delamere Community Centre

**Saturday 10<sup>th</sup> August 2019, 6pm**

**With PCSO Sue Keers**



**Ask a question,  
report a problem,  
mention anything  
bothering you or  
simply just meet our  
local Police  
Community Support  
Officer (PCSO).**

## Become a Parish Councillor!

Delamere & Oakmere Parish  
Council has vacancies for Parish  
Councillors

If you would like to apply for this  
position please email your CV with  
a brief covering letter to

Mrs J Monks, Parish Clerk, at  
clerk@delamereandoakmere.co.uk

For information about the  
Parish Council visit  
[http://delamereandoakmere.co.  
uk/parish-council/](http://delamereandoakmere.co.uk/parish-council/)

or contact your local Parish  
Councillor



## Local Post Office Delamere Community Centre

Wednesdays 09:30-14:00  
Fridays 09:30-13:00

Parcelforce Express Services  
Vehicle Tax  
Travel Insurance  
National Express Tickets  
MoneyGram® (send money  
abroad)  
Current Account Servicing

## IN THIS ISSUE

FOREWORD	4
ANSWERS TO THE QUIZ & CROSSWORD	5
FORTHCOMING EVENTS	6
LETTER FROM ST. PETER'S	10
ST. PETER'S NOTICEBOARD	11
ST. PETER'S CHURCH APPEAL	12
OAKMERE METHODIST CHURCH	12
COMMUNITY ASSOCIATION NEWS	14
DELAMERE WI	16
PARISH COUNCIL NEWS	18
DEVELOPMENT ACTIVITY NEWS	19
DAVID GOODWIN	20
ROBIN ACKERLEY	21
THE POLICE, THE MAGISTRATES AND THE ADMIRAL	24
THEN AND NOW	27
WILDLIFE IN THE PARISH	28
TREES THAT EAT STONES	29
DELAMERE'S DRAGONS	30
TOUR OF BRITAIN	32
LOVE ROMANIA	34
HE'S THE CHAMPION!	35
SUMMER OF FUN AT THE SCHOOL	36
CROSSWORD	38
QUIZ	39



It is just over 14 years since Robin Ackerley had the idea of launching this newsletter, having “suspected there was more going on locally than was generally known about”. Robin, whose funeral took place in St. Peter’s on 25<sup>th</sup> April, was himself a large part of what has been going on. He will be remembered with great fondness. The address which Gloria gave at Robin’s funeral brought tears to many eyes, and she has kindly given us permission to reproduce it here. It appears alongside a tribute to another stalwart of the parish, Dave Goodwin, who died peacefully just a few days before Robin.

The many pieces Robin wrote as the newsletter’s founding editor could well provide a starting point for a more ambitious initiative. A year or so ago a **Local History Group** was formed, which foundered for lack of any clear objective. It has been suggested that we try again, but this time set ourselves the goal of pulling together our memories and everything we can find out into some kind of publication - for example, an update or addendum to Frank Latham’s book *‘Delamere: the History of a Cheshire Parish’* (available on the History page of the website). **If you would like to join the group, contact the editor.**

Coming back to more recent events, this issue includes a report from two young Oakmere residents, Hannah Ford and Emily Marlow, on a working visit to Romania made with other students at Weaverham High School. On similar lines we also have a report

on recent activities at Delamere CofE Primary Academy. This is a welcome revival of what was once a regular feature of the newsletter, thanks to Julia Morse and Julie Roberts-Joyce.

Pat Tyson-Jones and Glyn Roberts have picked up the baton from Revd. Elaine to continue giving us the news from St. Peter’s, while Andrew Bell has picked up the Parish Council baton from retiring chair John Edwards. John is still as busy as ever on the Council, pulling together a team to produce a **Neighbourhood Development Plan**. Contact him if you would like to contribute (07772 235235 or [cllr.edwards@delamereandoakmere.co.uk](mailto:cllr.edwards@delamereandoakmere.co.uk)).

As ever our thanks go to all our other contributors, including Bridget Austin for another splendid cover picture and the one below, and Richard Downham for the one opposite.

Clive George  
Editor



*Reedmace (often called bulrush) at Blakemere*

*By Bridget Austin*



*St. Peter's in the Spring, by Raymond Downham*

## ANSWERS TO QUIZ AND CROSSWORD

### Answers to quiz

1. Martina Navratilova (9 times), 2. Dame Kelly Holmes, 3. Arsenal, 4. Tracey Neville, 5. Anya Shrubsole, 6. Dame Laura Davies, 7. The Netherlands, 8. Rebecca Adlington, 9. Tessa Sanderson, 10. Laura Kenny, nee Trott (4 golds)

### Answers to crossword

- Across:** 1. cave 3. averse 8. enmity 9. scythe 11. morello 12. oasis 14. nun 15. merry 16. mat 17. spool 19. scholar 21. exited 22. angora 23. finish 24. dire  
**Down:** 1. Cameron 2. vital 4. victory 5. rites 6. eye 7. lemmings 10. tourist 13. Saturday 15. mullets 16. maltose 18. Orion 20. Hindi 21. elf

# Forthcoming events

## THE WOMEN'S INSTITUTE

Date	Speaker	Title	Competition
Sept 10 <sup>th</sup>	Peter Turner	Curiosity killed the cat	Group competition to be announced
Oct 8 <sup>th</sup>	Liz Weston	Autobiography of a common woman - update	Diary entry for a WI member - 1 side of A4 max.
Nov 12 <sup>th</sup>		Annual Meeting - followed by Brenda in Antarctica	
Dec 10 <sup>th</sup>		Christmas Party	Home made Christmas tree decoration

*President: Lorraine Roberts. Meetings are held at 7.30pm, every second Tuesday in the month except for August, at Delamere Community Centre. [delamereandoakmere.co.uk/delamere-womens-institute/](http://delamereandoakmere.co.uk/delamere-womens-institute/), [twitter.com/delamerewi](https://twitter.com/delamerewi), [www.facebook.com/DelamereWI](https://www.facebook.com/DelamereWI)*

## DELAMERE AND DISTRICT GOLDEN CLUB

Sept 4 <sup>th</sup> 1.30pm	Cookery Demonstration by Lorena Anderson
Sept 18 <sup>th</sup> 1.30pm	Harvest Service and Harvest of Talents .
Oct 2 <sup>nd</sup> 12.30pm	Birthday and Harvest Lunch followed by musical quiz and party games
Oct 16 <sup>th</sup> 1.30pm	John and Pam Baddley, British songs and singers
Nov 13 <sup>th</sup> 1.30pm	Delamere Academy Choir, tea and cakes, quiz, raffle.
Nov 27 <sup>th</sup>	Christmas Outing
Dec 11 <sup>th</sup> 12.30pm	Christmas Lunch followed by Concordia Choir

**NEW MEMBERS WELCOME!** We meet every fortnight on Wednesday afternoons, except August, at the Community Centre. No upper or lower age limit! For further information please contact Gloria Ackerley tel: 01829 752723.

# ABOUT THE NEWSLETTER

Delamere and Oakmere News is published three times a year with the support of the Parish Council. The next issue is the Christmas issue, due at the end of November / early December,

## ADVERTISE WITH D&O NEWS!

Articles, ideas for articles, news of recent events or forthcoming ones, advertisements, photographs and any other contributions relevant to Delamere and/or Oakmere are all very welcome (inclusion subject to editorial discretion).

The newsletter is available to view on the Delamere and Oakmere Community website and you can also get a PDF file by email (contact us if you would like a copy).

## CONTACT

Editorial: [do\\_newseditor@yahoo.co.uk](mailto:do_newseditor@yahoo.co.uk)

Advertising: [do\\_newseditor@yahoo.co.uk](mailto:do_newseditor@yahoo.co.uk)

## SUPPORT US

All proceeds from advertisements go into the printing of the newsletter, so we really couldn't do this without you. Thank you!

BASED ON AN ORIGINAL DESIGN BY

**NEAVE  
CREATIVE**

Print & Digital Design



☎ 01606 566 202

✉ [info@neavecreative.co.uk](mailto:info@neavecreative.co.uk)

🌐 [www.neavecreative.co.uk](http://www.neavecreative.co.uk)





**We are a family run business with over 25 years of experience.**

We can offer a wide range of services for your car without invalidating your warranty. **Why pay more!**

**FREE  
PICK UPS  
& DROP OFF  
SERVICE OR  
COURTESY  
CAR**

- MOT
- TYRES
- EXHAUSTS
- CLUTCHES
- BATTERIES
- BRAKES
- DIAGNOSTICS
- RECOVERY SERVICE

**SAVE UP TO  
50%  
OFF  
MAIN  
DEALER  
PRICES  
AND IT WON'T  
INVALIDATE  
YOUR  
WARRANTY**

**All makes and models  
catered for from only £89<sup>00</sup><sub>+VAT</sub>**

**servicesure**  
AUTOCENTRES



**the Good  
Garage Scheme**

*'Approved Dealer' with a 100% customer rating*

**Nick Tomlin Cars**  
[www.nicktomlincars.co.uk](http://www.nicktomlincars.co.uk)



**WINSFORD 01606 215776**

Chester Road, Winsford CW7 2NQ

OPENING TIMES Monday- Friday: 9.00am-5.30pm

Saturday: 10am-5.00pm

**DELAMERE 01606 889494**

Chester Road, Delamere Northwich CW8 2HB

OPENING TIMES Monday- Friday: 9.00am-5.30pm

Saturday: 10am-5.00pm



**Follow us on Facebook for our latest offers!**





# FORRESTER'S

Telephone: 01928 789217

Mill Lane, Kingsley, Cheshire, WA6 8HY

OPEN 7 DAYS A WEEK

INCLUDING BANK HOLIDAY MONDAYS

## **FORRESTER'S BBQ BAGS ARE BACK FOR ONLY £25.50!!!**



10 X Pork Sausages

8 X Beef Burgers

8 X Burger Buns

4 X Tikka Chicken Breast Kebabs with onion & green pepper chunks

4 X Plain Chicken Breast Kebabs

1 bag X Chinese Wings 400g

1 bag X Hot & Spicy Wings 400g

1 bag X Marinated Inner Fillets 500g\*

2 bags X Marinated Drumsticks (5 drums per bag)\*

(\*You can choose the flavour)



Dear Friends

By the time you read this our beloved Rector, Revd. Elaine, will have taken her last Service at St Peter's. We will all miss her, and Brian, enormously but we must rejoice, and thank God, that they were sent to Delamere some 7 years ago. Revd. Elaine has been a wonderful and inspiring Rector who has left us a great legacy, which we intend to maintain and extend. She has also been a great friend to many people, the School, Community Centre and the WI: they will all miss her input, as will the congregation at St Peter's. We wish both Revd. Elaine and Brian a very happy and satisfying retirement.



*Elaine's retirement party cake*

Revd. Elaine was the 16<sup>th</sup> Rector in the over 200 years that St Peter's has been serving the Parish of Delamere. I'm sure that great regrets were expressed as each Rector left the Parish, but the Church has continued to serve the population. We hope that, in time, we will welcome a new Rector; the PCC has worked hard to complete the necessary paperwork required by the Diocese in order to advertise the vacancy. In the meantime the Church will continue as normal. We extend a warm welcome to you to worship with us at St Peter's. Each Sunday there are Services at 8.00 and 10.30, which will be taken by visiting

Ministers and Readers. Children are welcome at every Service and we provide story-bags for the younger children; the 3<sup>rd</sup> Sunday of each month, at 10.30, is a Service for all ages. We earnestly hope that you will continue to see St Peter's as the spiritual centre of the Parish and, in spite of the current vacancy, will worship with us on Sundays. New people, who wish to worship with us, will be assured of a warm welcome and we offer tea/coffee and biscuits after Church to continue our fellowship.

Some important dates for your diary are as follows:-

Sunday 29<sup>th</sup> September, Harvest Festival at 10.30 at St Peter's. This will be followed by a Ploughman's Lunch at the Community Centre. All are welcome but tickets, priced at £7.50 will need to be obtained from any member of the PCC or by contacting one of the phone numbers below.

Sunday 10<sup>th</sup> November. Remembrance Sunday Service at 10.30. We will be honouring the dead of both World Wars, and subsequent conflicts, together with the local branch of the British Legion

If anyone in the Parish would like prayers said for them, or their loved ones, there are slips in the Church Porch for you to complete, and a box to place them in, or please contact the phone numbers below.

If anyone would like a visit from a member of the Church, for any reason, then please contact us.

Pat Tyson-Jones (Church Warden)  
01829 751757

Glyn Roberts (Church Warden) 01606  
889188

## St. Peter's Notice Board

### FROM THE REGISTERS:

#### We welcomed by Baptism

March: George William Starkey

#### We said Farewell to

March: Doreen Ann Thomason

April: Patricia Evelyn Wykes, Pamela Woodhouse,  
Robert David Ackerley (Robin, Church Warden),  
Derek Lee Wallis, Eileen Greasley

May: David Roger Goodwin

#### We celebrated the Marriage of

June: Lisa Margaret Fisher and Graeme Wilson Parker

### NOTICES:

Children are welcome at all our services and we provide Story Bags for the younger ones.

Coffee is served in the Church Room after the 10.30 am service.

Weddings, Baptisms and Funerals by arrangement with the Church Wardens.

### REGULAR SERVICES

#### Every Sunday

8 am - Holy Communion

#### Every 1<sup>st</sup> Sunday

10:30 am - Holy Communion

#### Every 3rd Sunday

10:30 am - Family Service

#### Every 2<sup>nd</sup>, 4<sup>th</sup> & 5<sup>th</sup> Sunday

10:30 am - Morning Worship

If you are in pastoral need or wish to share something in confidence or would just like someone to visit then please contact the Church Wardens:

Pat Tyson-Jones	01829 751757
Glyn Roberts	01606 889188

[www.achurchnearyou.com/delamere-st-peter/](http://www.achurchnearyou.com/delamere-st-peter/)



## ST. PETER'S CHURCH APPEAL

St Peter's Church generally manages to cover all of its running costs from income generated, as well as paying its "Parish Share" to the Diocese of Chester (£18,000 per annum). However, it is not always possible to cover the costs of maintenance and repairs and currently our central heating boiler is in need of replacement and our pipe organ is in need of repair. The Parochial Church Council of St Peter's recently launched an Appeal to generate funds for such instances with an initial target of £15,000. As part of this, we recently approached a number of local businesses, some 35 or so in total, and we would like to express our sincere thanks and gratitude for their extremely generous donations to:-

**DELAMERE FOREST GOLF CLUB**

**DELAMERE FORTUNE PALACE CHINESE RESTAURANT**

**FISHPOOL FARM CARAVAN PARK**

**THE PETER KERSHAW TRUST**

(a Trust established in 1974 by the late Peter Kershaw, former local resident and Chairman of Joseph Holt Brewery of Manchester)

The PCC is very grateful for these donations, without which it would be very difficult to maintain the fabric of our Church.

We have recently broadened the scope of our Appeal and are inviting all residents of Delamere and Oakmere to consider making a donation. Further details are included in the letter which accompanies this edition of Delamere & Oakmere News. It is vital that we achieve our target if we are to safeguard the future of our Church for the villages and so we would be extremely grateful for any contributions.

## OAKMERE METHODIST CHURCH

In the main church at 10.45am every Sunday morning for a service led by a Methodist Local Preacher or Minister. One service a month includes the sacrament of Holy Communion, led by a Minister (Presbyter).

Contacts: Ann or Eric Wright (01829 732950) or Rev Andrew Emison (01928 733180).

## A Neighbourhood Plan for Delamere & Oakmere

Many communities throughout the country have produced a Neighbourhood Development Plan, or Neighbourhood Plan, which gives them greater influence over future developments in the parish.

The first step in developing such a plan is to put together a team of volunteers to do all the work!

If you would like to contribute to developing a plan for Delamere and Oakmere contact John Edwards at:

Tel:  
07772 235235

Email:  
cllr.edwards@delamereandoakmere.co.uk

# Club Class

## 01606 46666

### 24-7 Cheshire Taxi

Your number one choice for:

**Shopping trips**

**Nights out**

**Wheelchair access vehicles**

**Special events**

**Airport & rail transfers**

**Cruise & coach rendezvous**



**We are always open  
& always happy to help**



01606 882 219

## SpannsGarage

*Motorcycles, Scooters, Trykes, Quads  
Cars, Vans and Three Wheel Cars*

*MOTs, Tyres, Servicing, Repairs, Air  
Conditioning, Diagnostics*

*Collection from local area*

### Opening Hours:

8.30 am – 5.30 pm Monday to Friday

8.00 am – 1.00 pm Saturday (MOTs only)

**Tel:** 01606 882219

**Fax:** 01606 881700

Email: [spanns.garage@zen.co.uk](mailto:spanns.garage@zen.co.uk)

[www.spannsgarage.co.uk](http://www.spannsgarage.co.uk)

**Dalefords Lane  
Whitegate  
CW8 2BW**

## ForestNet IT Service

Station Rd, Delamere

*Your Local Computer Support Service for  
the Home/HomeOffice/Small Business*

**PCs Laptops Tablets**

**Printers Routers Servers**

**Troubleshooting/Problem Solving/Upgrades**

**Software Installs/Upgrades**

**Anti-virus/Malware issues**

**Home/Office Networking**

**Router/WiFi issues**

**Broadband Security Controls**

**30 Years ICT experience**

**Courteous Professional Service**

**Competitive Rates Fixed Price No Fix No Fee**

Email: [enquiries@forestnet.co.uk](mailto:enquiries@forestnet.co.uk)

Tel: 07856 222415

Web: [www.forestnet.co.uk](http://www.forestnet.co.uk)

## **Farewells**

The Community Association was saddened by the passing of Robin Ackerley. A long-term supporter of the Association and member of the Management Committee, his sage advice and hard work is already greatly missed and our thoughts are with Gloria and the family.

We have also said goodbye to Elaine and Brian Ollman, Trustee and Management Committee member respectively, who have left the parish. We shall miss their work, both practically and spiritually, and wish them every happiness back on the Wirral.

## **Improvements**

In the past couple of months we have refurbished the snooker table, with new baize, cushions and pockets, and replaced some of the card tables, which were looking past their best; we will be replacing all the remainder when they are in stock. After the good reviews of the acoustic panels in the Main Hall we have now extended them to the Bowling Room.

The Management Committee are currently looking at the cost of replacing the curtains and curtain rails, which have been in place since the Centre was opened over 45 years ago! We recognise that the Notice Board could also do with our attention so hope to improve that as well.

## **Clothing Bank**

The Salvation Army has placed a recycling bin for clothing in the Centre Car Park. The Association receives a do-

nation from the Army which is dependent on the weight of clothing left so, if you are having a clear out of your winter wardrobe, why not drop it off in the Clothing Bank and benefit local facilities!

## **Annual General Meeting**

This year's AGM will be held on

Monday 2<sup>nd</sup> September, starting at 7.30pm. We have moved the date of the meeting from July to try and attract more of the local Community, so if you have any suggestions for improvements at the Centre or want to help us manage it then we would be delighted to see you.

## **Bookings**

The Main Hall is used most evenings during the winter months but is generally available at weekends and during the day – on certain days! Monday and Thursday evenings are available for hire during the summer months.

We also have the smaller Bowling Room and a Meeting Room that can accommodate up to 16 people; both are available for the majority of the week. If you want to book any of the rooms, either on a regular basis or for a one-off event, then please contact Lorraine Roberts, our Booking Secretary, on 01606 889188.

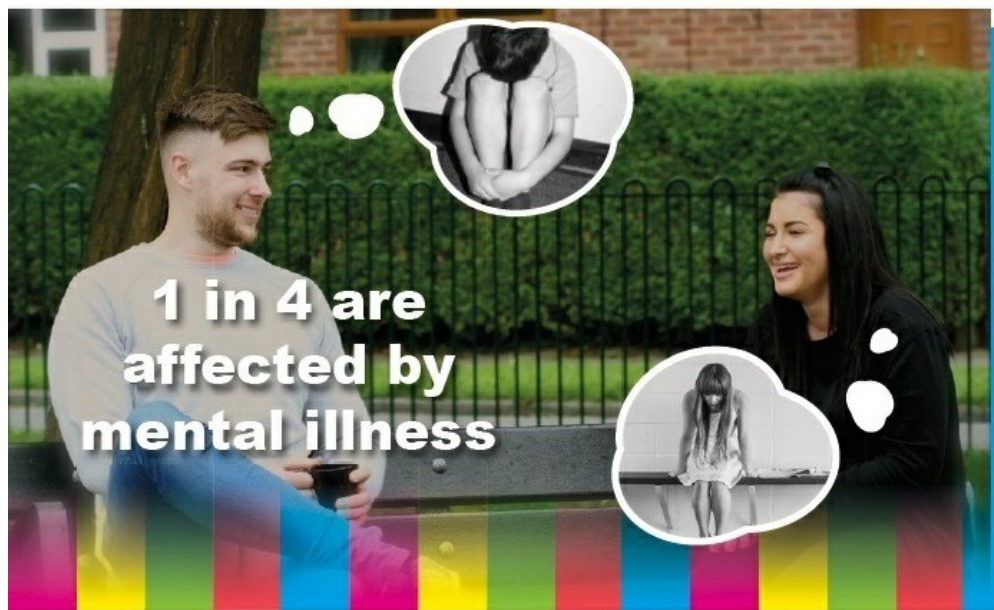
Paul Dean, Chairman, DCA  
Steve Lacey, Treasurer, DCA



# Beat the Darkness

**Do you or do you know someone who suffers with a mental health issue?**

**We are creating a place for people to feel safe, chat and socialise without judgment and maybe even have some fun in the mean time.**



**1 in 4 are  
affected by  
mental illness**

**Join us for a brew.**

**We know, because we suffer too!**

**Last Tuesday of every month at Abbey Arms Pub,  
7 - 10pm • FREE**

**[beatthedarkness@gmx.com](mailto:beatthedarkness@gmx.com)**

We welcomed our speaker, David Walker, to our March meeting who told us how he had made a successful career out of his hobby of knot work. He described how he went from butcher to window cleaner to knots. Knots have taken him all over the world and he has strong friendship bonds internationally. His work is mainly practical knot work, for example fenders and matting, but many of his colleagues do decorative work, of which he had many samples to show us. He even showed us one or two tricks you can do with knots.

Our April speaker was Eric Hodgson, Chairman of the Cheshire Magistrates' Bench, who gave a very interesting and enlightening talk about Cheshire Magistrates. As we worked our way through the multiple choice questions we did discover that sadly most of us are too old to become a magistrate as 70 years is the upper limit, though some of our younger members might have been inspired to take up the challenge. We shall await developments with interest!

May is the month when every WI discusses the Resolutions put forward by members earlier in the year. This year they were 'Don't Fear the Smear' and 'A Call against the Decline in Rural Bus Services'. After much discussion, we were unanimously in favour of both of the Resolutions. We were very pleased to welcome Anne Law to the second half of our meeting which was given over to our Mini Show. Anne is always very encouraging when she comes to judge our efforts which don't

always come up to Cheshire Show standard, but we always have fun in the attempt. This year we congratulate Linda Thompson for gaining the most points. Linda will hold the cup for the next two years.

A very wet and cold June evening didn't deter members attending our meeting when Jill Cox gave us a talk on 'Living for Today, Planning for Tomorrow'. This talk was very interesting and informative and though a very serious subject, there was a very happy atmosphere and we enjoyed the chance to talk to each other.

In July we will be learning about Tai Chi and August will be our garden meeting, when hopefully the weather will be kind to us. In September Peter Turner will be making a welcome return - we always enjoy his talks - and in October another favourite, Liz Weston will be giving us the next episode of her amusing life.

We do enjoy our WI meetings but this year we have been very sad to say farewell to two of our members.

Thelma has moved to be nearer family and as you will all know by now, Elaine has retired. We are very sad to lose them but are very thankful for the time they have spent with us and hope they feel it was quality time. We wish them every happiness in the next chapter of their lives and insist that they keep in touch. We do like to keep our old friends, but always look forward to making new ones. It could be you - please come and give us a try.



# Summer

AT  
THE HOLLIES FARM SHOP

---

BBQ meats

More than 70  
local suppliers

Delicatessen meats,  
cheese & pies

Market fresh fruit  
& vegetables

Hanging baskets  
& bedding plants

Summer bouquets

Home, gifts & cards

 THE HOLLIES  
FARM SHOP

[www.theholliesfarmshop.co.uk](http://www.theholliesfarmshop.co.uk) | [info@theholliesfarmshop.co.uk](mailto:info@theholliesfarmshop.co.uk)

The Hollies Farm Shop, Little Budworth, CW6 9ES | 01829 760 414



Dear Residents and Friends

Summer is finally here, and although we are still waiting for repeats of last year's heatwave, it is lovely to see the forest in full leaf, especially from the Old Pale on hot, sunny days.

A big thank you to Cllr Edwards for his efforts particularly over the past year, especially for his focus on improving road safety and the improvements to Little Wood. I am looking forward to working with the community on the many exciting developments and projects over the next 12 months.

There continues to be development work throughout the area. The Earlsbrook (Marley) site is progressing well and they are aiming for completion late next summer with the work on the roundabout commencing soon. Work also continues at the Old Courthouse and at Delamere Lake.

We have also been informed about more accidents at the Abbey Arms Junction; we are continuing to liaise with the Highways Department at Cheshire West in order to find an effective solution. We always welcome any concerns and suggestions about this and any other issues relating to road safety.

We are also continuing to look at solutions on tackling parking and anti-social behaviour issues on the Oakmere Way and Stoneyford Lane, in conjunction with our local PCSO, Sue Keers, and Tarmac, who are regularly holding meetings with residents and the Parish Council.

There are also a few mentions I would like to add:-

Firstly, a big thank you to Katherine MacVicker and Tony Overland who have both retired from the Parish Council, their invaluable hard work and efforts over the years will always be remembered. We have several vacancies on the Parish Council, so if you are interested in supporting the local community and making a difference, please contact the clerk.

A warm welcome back to Ward Councillors John Leather and "new" Councillor Harry Tonge, who served as a Delamere Parish Councillor for many years. We look forward to working with them both on any upcoming issues/concerns which may arise over the course of the next four years.

I would also like to thank the Rev Elaine Ollman for her outstanding contribution in the community as Rector at St Peters for over 7 years; her work especially with Delamere Academy will always be remembered. We wish her and Brian all the very best for the future, and a happy retirement.

Finally I would also like to pay tribute to Robin Ackerley, who passed away in April. Robin was a Delamere Parish Councillor for many years and the first chair of Delamere and Oakmere council. He was a true pillar of our community who will never be forgotten.

I hope you all have a wonderful Summer

Yours Sincerely

Andrew Bell  
Chair, Delamere and Oakmere Parish  
Council

### ***The Magistrates' Court***

The EBL team working on the courthouse development had to keep an eye open for bats living in the



building, as they are a protected species.

Sure enough they found one, and gave him the nickname 'Boris the bat'.

Working with Natural England and a specialist ecologist they installed bat boxes at suitable locations on the site, and Boris has been safely re-housed.



*Boris the bat*

### ***Earlsbrook***

At the time of going to press Lane End expected to get the go-ahead to begin construction of the roundabout on Station Road by the end of July.

The show houses are expected to have been built by around the same time. The interiors will then be fitted out in readiness for the sales launch.



Dave Goodwin will long be remembered for his ability to add to other people's lives through selfless actions rather than empty words. He was a local lad who travelled far, born in Hartford then working in Africa for fifteen years before settling in Delamere in 1980.

During the 1980s Dave became a member of the Parish Council and served as its Chair, devoting many hours and much effort to improving the quality of the local environment. He took on the rôle of footpaths officer, walking them every year and reporting any problems to the Mid-Cheshire Footpaths Society. He helped set up a workgroup to create the path around the woodland on Eddisbury Hill next to the Ridge, putting in the edging, laying the stone and installing the bench. They also planted daffodils in the field alongside Frith Avenue, which had been a waste tip until they got it cleared. The woodland at Abbey Hill on Chester Road was another target for restoration, having been used for fly tipping and dumping old furniture. After getting a grant to have it cleared Dave and his fellow Councillors planted another 30 beech trees, put up an owl box, and arranged for the children at Delamere school to plant it with wildflowers. Another major project he helped to organise with the children from the school was to plant the avenue of trees on the A54 between the Fishpool and the school.

Dave had a natural affinity with children, reflected in his career. After teacher training in Liverpool he did his probationary year at the Grange school in Winsford, where he met Sue. Broadening his horizons he set off to teach in Zambia - followed by Sue. They came back to get married in 1971 before returning to Africa, this time to Swaziland, where he was head of school. A keen sportsman, he became captain of the local golf club and played squash for the national team.

On coming back to settle in Delamere in 1980 Dave helped set up the Mid-Cheshire Sheltered Workshop for young people with learning disabilities at Petty Pool in Sandiway. After a spell teaching at the Dingle School in Haslington he was appointed to the Headship of Bunbury Aldersey Primary School, a Haberdashers school, where he had the honour of entertaining their patron, Princess Margaret. During his ten years there he led many initiatives including creating a new library, an extra classroom, a new staff-room, a peaceful garden for the children, outside seating areas, bird boxes, weather stations and a pets corner, with rabbits, hens and a tortoise. In what time he had to spare he played trombone in the Bunbury village music group.

After Dave retired he continued to look after the woodlands on Abbey Hill and Eddisbury Hill, and took on the maintenance of the church grounds, including removing all the ivy from the church wall and re-pointing it with "ecclesiastically approved" mortar. He loved hiking in Snowdonia with friends and fishing off the rocks at Moelfre, brought to an end by illness which he faced stoically and courageously. Throughout his life he set exacting standards for himself, while treating everyone he knew as equals, with courtesy, respect and dignity.



### *Gloria's address at Robin's funeral*

Robin was in many ways an ordinary man, but we have received a constant stream of tributes citing his depth of knowledge as a teacher, inspiring his pupils with his literary knowledge and command of the English language. He had an extraordinary sense of humour and a willingness to help others, a gentleman with gentle ways and with a gift of relating to everyone. However I feel duty bound to point out that he was sometimes of doubtful character:

Let's start with his early years. John Garner, a childhood friend, reminisced that he could remember Robin and his brother Tim racing round and round the school playground in their old car, making such a commotion – not with the pupils present I might add, as the School House was his home, the place where he was born. I expect Robin would be breaking quite a few rules there nowadays.

Then in London in 1968, what other girl at a dance would fall for someone who stole her from her partner and then proceeded to step on her toes for the rest of the evening? Then there was the boast that he had an MG. Being new to the world of men's talk I did not know what an MG was but I did ask what colour it was. "Red" came the reply and I fully expected to be taken back to my student hall of residence on a motorbike.

His first teaching job was at The Bec School in Tooting and his tiny one room digs was in Dulwich. Was he telling me a lie when he proudly boasted that from his bed he could shave and cook his egg and bacon all at the same time before dashing off to work? I was really impressed at that, though I never got to see the event in person.

It wasn't until I'd said "I do" that I became fully aware of other loves in his life. At our wedding breakfast my suspicions were aroused when a telegram was read out announcing the latest test score, but by then it was too late. I had already said "I do" and I had to prepare myself to be a sports widow on many an occasion, especially concerning cricket and table tennis.

There were other numerous times when, as a married man, he would leave home never to be seen for what would seem to be an eternity. Yes, he was off to visit a friend and have a good chin wag, such as the time he set off in afternoon daylight to see Bob Vernon, just down Black Hill, known to "newcomers" to Delamere as Eddisbury Hill. By 9.30pm there was still no trace of Robin and I set off in the car thinking he had fallen by the wayside in the dark, which, of course, he had, by continuing to talk with Bob at his house!

His time outside the home was well spent making an impact on so many people. His greatest satisfaction whilst head of English at Bexley Grammar School for 27 years, was the many drama productions that he directed, including Shakespeare plays, *My Fair Lady*, *Oklahoma* and half a dozen end of year musicals that he wrote, as his "Dansonias" productions, acted, sung and danced to by staff and sixth formers to raise money for the British Heart Foundation.

We had our first daughter, Elizabeth whilst living in Lewisham and then moved to Kent



where Katherine and Rosalind were born. In November 2003, with all three girls having flown the nest, we left Kent and came back to Delamere, where we turned a field into a beautiful garden. Needless to say, this was never going to be a quiet retirement, with Robin starting the village newsletter and becoming the first Chairman of the newly combined Delamere and Oakmere Parish Council. He also served as Chairman for the Save Delamere Forest campaign, joined the Delamere Community Association and the Parochial Church Council and supported the British Legion by selling poppies. He was Chairman of the Delamere and District Golden Club, for which we have hosted garden parties. Links with the school, Delamere Church of England Primary Academy, where his own parents had taught, remained strong and he was delighted to serve as a school governor.

For thirty years Robin was thrilled to tow the caravan to Italy for our annual holiday with the family. After weeks of careful preparation, every holiday began with a last minute dash to the ferry and a feature

would be Robin's phrase "That's it. This is the last year we are doing this" but sure enough, every year the Ackerley family would be off on their annual trip again, even at the age of 77 making the journey with the caravan in tow. One of his greatest joys in retirement has been his six grandchildren: Andrew, Daisy, Joanna, Isabel, William and Amelie with all six having joined in with the annual caravan trips to Italy.

He made this trip until his strength began to fail him only two years ago. Still he had time for people, still his sense of humour shone through his smile even the day before he died and that was peacefully the night of Palm Sunday.

Robin would want you all, young and old, to make the most of your lives. He certainly packed a great deal into his own, in a quiet unassuming way. St. Peter's Church meant a great deal to him. It was where he was christened, where he worshipped and where he was Warden if only for a short time. His faith was his lasting strength and it never wavered. This extraordinary man knew where he was going.

# EMMA WILSON FITNESS

Local health, nutrition & fitness coach

Get motivated.  
Have fun.  
Get fit.

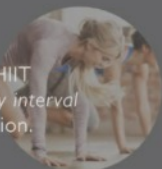
## CLEAN & LEAN

Monthly Online Nutrition Program helping you with overall health and fat loss management. Simple, no nonsense, real food, no gimmicks.

CLEAN  
& LEAN  
The Healthy Choice  
BY EMMA WILSON  
FITNESS

### HIIT

Metafit is a HIIT (high intensity interval training) session.



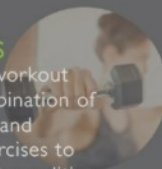
### KETTLERCISE

Kettlebell your way to fitness and liberate the fat.



### CIRCUITS

Total body workout using a combination of bodyweight and resisted exercises to strengthen & condition.



### PURESTRETCH

PureStretch a fusion of pilates and yoga. Lengthen & strengthen your entire body along with core stability.



### BUGGYFIT

The best way to get back in shape after your new arrival.



### B.L.T

A 45 minute class focusing on bums, legs and tums.



Contact Emma Wilson-Dart | Email: [getfit@emmawilsonfitness.co.uk](mailto:getfit@emmawilsonfitness.co.uk) | Call: 07971 596529

## nicola gibson

ARCHITECTURAL  
DESIGN

ONE OFF HOUSES | EXTENSIONS & REMODELLING | RESIDENTIAL DEVELOPMENTS | GARDEN ROOMS



All drawings prepared for and submitted to the Planning and Building Control departments on your behalf, including Listed Building and Conservation Area consent where necessary.



Contact Nicola Gibson to discuss your next project.

Tel: 01606 301171 | Mobile: 07813 034552 | Email: [nicola@nigdesign.co.uk](mailto:nicola@nigdesign.co.uk) | [www.nigdesign.co.uk](http://www.nigdesign.co.uk)

## Wilcox

Rendering Specialists

Suppliers and installers of a wide range of rendering systems and insulation solutions



Contact Alan for advice and quotes on

07511 781350

[alan@wilcox.biz](mailto:alan@wilcox.biz) [www.wilcox.biz](http://www.wilcox.biz)  
facebook: wilcox rendering specialists

# THE CHESHIRE POLICE, THE OAKMERE MAGISTRATES AND THE BELLIGERENT ADMIRAL



With the restoration of the former police station and magistrates' court on Chester Road now well under way, former Detective Superintendent Will Brown of the Museum of Policing In Cheshire has kindly given us some more information on the history of the building, along with some old photos. He used to visit it himself



*One of the police station cells*

when he was stationed at Northwich in the 1960s, taking prisoners to be held in the cells before they appeared in court.

When the building was opened in 1873 it became home to the Eddisbury Petty Sessions of the Cheshire Magistrates, who had previously met in the Abbey Arms. Its first mention in the old police force orders was in 1878, as the headquarters of the Eddisbury Division of the Cheshire Constabulary, with a Superintendent in charge.

The picture opposite shows the Eddisbury Division in the front of the building in 1905. The young man

wearing civilian clothes is thought to be a new recruit having yet to be issued with his uniform.



*The Eddisbury Division 1905*

The officer seated in the centre of the front row is Superintendent John Beeley, who joined the force in 1881 and retired in 1912. He came to Oakmere as the officer in charge in 1903 and remained there until he retired. He was a widower who remarried whilst at Oakmere. His new bride was 26 year old Mabel Turner, who's father Edwin was a retired police sergeant. They were married by Revd. Payne at St. Peter's on 10<sup>th</sup> November 1909. The 1911 census recorded ten members of the Beeley family living in the police station, including the Superintendent's six children from his first marriage, his sister-in-law and her 8-month-old daughter.

When the building was in its heyday it was the centre for law enforcement across the whole of the Eddisbury Hundred, covering Frodsham, Helsby, Tarvin, Tarporley, Peckforton, Weaverham and the rural communities in between.



*Eddisbury Hundred*

The Petty Sessions held in the courthouse generally covered only minor offences, though one was of sufficient interest to attract a 1000-word article in the the Cheshire Observer of March 5<sup>th</sup> 1904. It reported how

“a party from Tarvin drove up to Oakmere Court House in a smart wagonette proclaiming to the world by the magic words “Passive Resisters” in large letters on a board, that they were law-breakers. Apparently they hoped to make a great demonstration before a crowded and admiring court, and they must have felt keenly disappointed when they were sent down to a smaller room, where the magistrates dealt with them in summary fashion”.

The leader of the twelve miscreants was a Tarvin dignitary, Admiral John McClure of Tarvin Hall. McClure was a Scottish Presbyterian who, along with other non-Conformists, had taken exception to the 1902 Education Act, under which Anglican and Catholic



*Daimler wagonette c. 1899, theoldmotor.com*

church schools were funded through the rates.

As part of a nationwide publicity campaign to try and get the act amended,

McClure and his fellow protestors had refused to pay the education portion of their rates. In his defence he told the magistrates that the Act was

“subversive to the King’s authority”, that “the King sat upon his throne by virtue of being a Protestant”, that the Act “condemned Protestantism right and left”, that it was “passed by fraud”, and that it was “against the principles of the British Constitution”. The magistrates were unimpressed. They fined him 4s. 7d. plus 3s. 6d. costs.

The fine didn’t leave much of a hole in the Admiral’s pocket. He was sufficiently wealthy to fund the losses



*Admiral John McClure, Wikipedia*



of his fellow protestors too. When they refused to pay their rates the authorities would seize property of equivalent or greater value and auction it off. The good Admiral would attend the auctions and buy up all the goods for return to their original owners, thereby getting yet more newspaper coverage for his attempt to get the Education Act amended.

McClure was an intriguing character in more ways than one. He was not a senior officer in the Royal Navy, but in the Chinese navy. He had joined the merchant marine as a young man and became captain of a series of merchant vessels operating around China. When the First Sino-Japanese War broke out in 1894 his intimate knowledge of Chinese waters led to him being appointed Assistant Admiral of the Imperial Chinese Fleet and given the rank of Mandarin of the highest class.



Admiral John McClure in his Mandarin robes, about 1910 - from [kirkcudbrighthistorysociety.org.uk](http://kirkcudbrighthistorysociety.org.uk)

Within a few months of his appointment the fleet was defeated by the Japanese, and its commander-in-chief and other senior Chinese officers committed suicide. Command fell to McClure, who promptly negotiated surrender terms. After a brief spell as a prisoner of war in Japan he returned to the UK, moved into Tarvin Hall, and

started his new career as a rate-resisting activist.

Oakmere's historic courthouse and police station has at least one other claim to fame. For a brief period in the 1920s it housed the Cheshire Constabulary's only police dog.

The chief constable at the time, Colonel Malcolm, persuaded the police authority to authorise an allowance of four pence per day for the upkeep of dogs, to be handled by selected police officers. Only one was obtained, a bloodhound kept at Oakmere. In the course of its short career (it died of distemper after only nine months) it was tried out in various parts of the county, with little success. Its only means of transport to scenes of crime were by rail or in the superintendent's horse and cart, so any trail was liable to have gone cold by the time it arrived.

The building remained the headquarters of the Constabulary's Eddisbury Division until 1939, when it was absorbed into the Runcorn Division. It then became a sub-divisional headquarters, with an Inspector in charge.



*Eddisbury sub-division at the rear of the building in 1953*

Around the 1960s its use as a police station ceased, and its only police function was as the residence for the local rural beat man. The Petty Sessions continued to be held in the courthouse until 1987. In 1991 a planning application to convert the building into flats was refused, after which it was left to decay. A second planning application was submitted in 2012, and after much amendment the restoration is finally going ahead.

*The pictures of the Constabulary gathered outside the building and of*

*the police cell are courtesy of the Museum of Police in Cheshire:*

*([museumofpolicingincheshire.org.uk](http://museumofpolicingincheshire.org.uk))*

*The museum is an independent registered charity staffed entirely by volunteers, wholly dependent for funding on donations and income from family history projects and other research. Visitors are welcome, both individuals and parties. An open day will be held on Saturday 14th September from 10 am to 4 pm.*

## THEN AND NOW *Don Wilson*

Volunteers of the Sandstone Ridge Trust are currently working on a landscape project showing how the landscape of the Ridge has evolved over the years. It is intended to record a series of "then and now" photographs to illustrate these changes.

This example is of the Shell Garage at the traffic lights on the A556/A49, showing the situation now and in the same spot in much quieter times.

If anyone has any old photographs of our area, please contact Don Wilson:.

*[dontravcon@hotmail.com](mailto:dontravcon@hotmail.com)  
or telephone 01829752710*



It is difficult to understand the cycle of the seasons. This years' wet weather has been a disaster for young birds leaving the nest and venturing out into the big wet world. Any that cannot find food or shelter soon succumb to the cold and wet and do not make it.

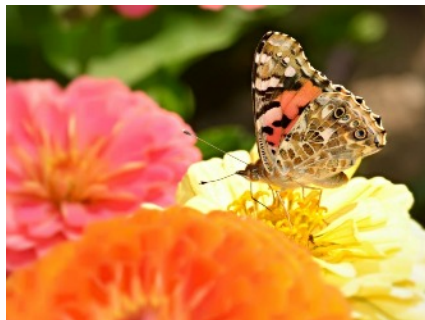
This time last year we were in a drought situation with many ponds drying out and losing all the aquatic insect life. Badgers fared very badly during that drought with many being killed on the roads during their forced movements to find water and food.

However, this Spring started well with bird reports including Pied Flycatcher and Redstarts from the forest. Unfortunately, it appears that only male Pied Flycatcher visit the forest and after finding no females move on elsewhere.



*Pied Flycatcher, © Mark Medcalf*

Common Blue Butterflies were on the flowers at Lob Slack ponds and a Painted Lady Butterfly was reported which is a migrant species from North Africa.



*Painted Lady, © Andrew Cooper*

A Brimstone Butterfly was the first butterfly I saw this year, with several males around the Alder Buckthorn bushes in Stonyford Lane. The Buckthorns had not even come into leaf when I saw the much paler female ovipositing on half open buds. Caterpillars were observed feeding on the leaves a few weeks later. These Buckthorns were planted to entice this species to the area and have been a great success. It is a species that is expanding its range in Cheshire generally.

The sighting of deer in the forest has been happening for years.



*White Fallow Deer, © Nigel Downer*

Occasionally the white fallow deer near Primrose Hill go for “walk about” during the evenings and into the night and are encountered in the woodlands or are seen in the fields at Castle Hill. When we hear reports from Oakmere,

Plovers Moss and Gallowsclough from reliable sources it may be that wild deer are about in the area. Roe deer have been seen and could go unnoticed in some of the more out of the way private woodlands.

## TREES THAT EAT STONES *Gloria Ackerley*



The stone in the picture, lodged between two tree trunks on the

footpath from Stoney Lane to Kelsall, was put there about two years ago to mark the position of another that had almost disappeared. The first one is now completely buried, visible only as a bulge in the bark that covers it. How long will it be before the second stone is eaten too?





# DELAMERE'S DRAGONS HAVE EMERGED FROM THEIR LAIR *Cheshire Wildlife Trust*

Over the last few years a project called Delamere's Dragons has been underway to re-introduce the white-faced darter back to Delamere Forest. It is one of only two re-introduction schemes for this rare dragonfly attempted in the UK.



The white-faced darter had been extinct from Cheshire for over a decade, only found at a handful of locations in England.

Starting way back in 2013, after several years of building and improving lost habitats with the Forestry Commission, we collected the white-faced darter's tiny vibrant green nymphs from healthy populations in Shropshire and Staffordshire.



*Dr Vicky Nall with dragonfly nymph*

Dragonflies spend most of their life underwater as nymphs or larvae. Despite some species living for a few years, they only exist as we know them for a few weeks to find mates and lay eggs.

Some adults don't even have mouths because their only job is to reproduce!

Liking lowland peatbogs like the pools in Delamere, we found the perfect new home for our white-faced darter nymphs.



The common cotton-grass and soft rush would provide the ideal ladder for the nymphs to climb out of the water when they were ready to emerge. The nymphs need this grass to grip onto as they burst out of their larval case as fully formed adult dragonflies. After an hour or so to dry their wings, they fly off leaving the case of their old life behind.

The pool also had the right quality of water and enough submerged moss and vegetation for the nymphs to hide; it's a tough nymph-eat-nymph world under the water!

Damselfly and dragonfly nymphs are fierce predators that ambush and chase anything they can fit in their extending mouths – including other nymphs. Using hair-like structures on their legs and antennae to detect movement, they've been shown to fully extend their mouths within 15

milliseconds! No time to react for their unsuspecting prey.



So with most of their life being spent underwater and only a short window to catch a glimpse of them fast in flight, what's the best way to see whether the white-faced darters have survived? Well it's put on some 5-ft waders and get into the bog to look for cases.



Living Landscape Officers Kev and Jack have been wading through the pools three times a week throughout May, observing each blade of grass for the 2cm cases of the white-faced darter nymph.

Not being able to see the floor of the bog is a risky game. Having built up from thousands of years of vegetation falling in the forest, there are huge drops hidden in the floor of the pools, with giant trees to clamber over. All this whilst mostly submerged in water

dressed as a welly, with only a walking pole to test the footing.

After three weeks of searching and a number of soggy socks and phones due to leaky waders, they eventually found what they were looking for – the first white-faced darter of 2019. And the first female recorded in years.

These are the first adults to have been born here in well over a decade. We stopped introducing new nymphs into the pool in 2016, meaning that all adult dragonflies emerging this year are Delamere bred.



What's next? As well as keeping an eye on the population in the pool, we're working at connecting corridors between mossland sites in Delamere Forest to encourage specialist species like the white-faced darter to move around the forest. The long-term hope is that the series of mossland pools being restored on the site will encourage this species to expand, and for Delamere's precious dragons to thrive!

If you go exploring yourself, remember that the wet parts of Delamere are very deep and dangerous, so stay to the paths and leave the wet work to us.

As was reported in the last issue, Cheshire Wildlife Trust has been working with Tarmac to create a 17-hectare nature reserve at Crown Farm quarry.



*Opening event attendees outside the new outdoor classroom*

The site is home to a new educational centre (the Discovery Centre), which was officially opened on 13<sup>th</sup> June. The first school visit took place on 21st June.

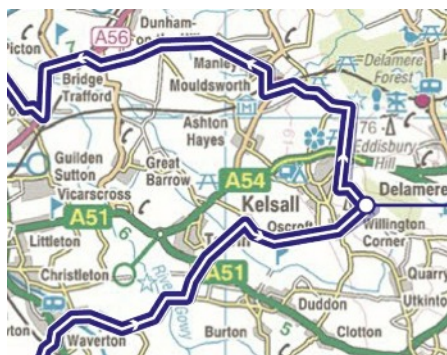
The centre has both an indoor and an outdoor class room, and has been specially designed to help children get the most out of their visit. During a trip to the centre children will be able to take part in various outside activities including habitat studies such as pond dipping, mini beast hunting, identifying wild flowers and trees, plus Forest School type activities.

## TOUR OF BRITAIN COMES TO DELAMERE (NEARLY)



The Wirral stage of this year's Tour of Britain cycle race will pass along the edge of the parish on Wednesday 11th September.

Starting in Birkenhead, the route heads south from Chester and then east as far as Willington, where it goes up Chapel Lane to reach the highest point of the stage. From there it goes along Waste Lane, over the A556 and up



Yeld Lane to the edge of the forest before heading back to Birkenhead.

There will be plenty of places for spectators along the route, though if you need to park a car you might want to get there early. Times have yet to be announced.

[www.tourofbritain.co.uk/](http://www.tourofbritain.co.uk/)






# 32

BY THE HOLLIES

Hotel | Restaurant | Bar



A boutique experience in the heart of  
Cheshire



32 High Street, Tarporley, Cheshire, CW6 0DY  
[www.32bythehollies.co.uk](http://www.32bythehollies.co.uk) | [info@32bythehollies.co.uk](mailto:info@32bythehollies.co.uk)  
01829 738958



We are Hannah Ford & Emily Marlow. We are 15 and live in Oakmere. Through our high school and local charity, Barnton Life Church-Love Romania we went to Cluj Napoca in Romania during our May half-term to work at a centre and also a school for deaf & autistic children.



Part of our project was to raise money to purchase equipment for the children there. We decided to hold a charity bingo night at Delamere community Centre on Tuesday 21st May.

The evening was a great success... Around forty local residents turned out for 'eyes down,' and thanks to the most generous support of many local businesses there were some great prizes up for grabs {not to mention lots of tasty homemade refreshments!} With a mixture of regular bingo goers and some enthusiastic newcomers, there was a lively, fun and competitive! atmosphere throughout the seven-game card.

And thanks to the extreme generosity of the members of Delamere community, a total of over £400 was raised during the evening which was used to purchase stationery, musical instruments, a selection of sensory toys, and Amazon fire tablets, all of

which will enrich the lives of the children at the centre.

We all met at school at 3.30am Sunday 26th May and set off to Birmingham airport in the school minibus for our 8.30 flight.



Our Sunday was spent sightseeing in Cluj, before spending Monday & Tuesday at the Hope Centre



Here, we and five other Weaverham High pupils acted as Teaching Assistants, taking part in various projects; from Art, Music & play therapy sessions to Sport workshops and even gardening!

Wednesday: We had a Day off and visited the Transylvanian countryside and waded up a river!



For the rest of the week we went and worked in another school in Cluj called Joy Story. This school was better equipped than the first centre and it was interesting to see the differences between the two centres.

The days we spent with the Romanian children were incredibly eye opening and enjoyable, despite being completely out of our comfort zones. We spent time with children aged 2-15 in the centre for deaf and autistic children, during therapy sessions, arts and crafts, gardening and outdoor activities.



Overall, the trip was incredibly rewarding and an unusual yet enlightening experience, getting to explore Romanian culture and sights as well as spend time with such lovely and welcoming children and people.

## HE'S THE CHAMPION!



The 2018/19 season of the NATSKA national karting championship drew to a close in June with Rowan Cartwright as the Cadet class national champion!

As we reported in Issue 44 Rowan started the season in style with two wins and a second. He kept his form to the end, winning six of the season's nine races, along with two seconds and a third.

Delamere CofE Academy have enjoyed an extremely busy summer of fun as well as learning, with a packed agenda taking pupils the length and breadth of the country.

Already they have travelled to York for a Viking experience, to Denbighshire to brush up on their survival skills, to Anglesey for an artistic adventure, to The Eden Project in Cornwall for sun, sea and surf, to the Shropshire Union Canal and Tattenhall.



*Assistant Headteacher Ricky Huddart and pupils at the Eden Project*

Once again, the Parent-Teacher Association have gone all-out with their efforts to raise additional money for the school, and would like to pass on their thanks to local businesses and friends of the school who have contributed generously.

Highlights of the packed schedule have been the ever-popular Beer and Gin Festival and the Summer Fair and Sports Day. Funds from the year are currently being counted up, but are expected to top last years' total of more than £14,000.

They will go towards providing extra play and learning equipment.



This summer has brought new additions at the school, with seven chicken eggs suc-

cessfully hatched and reared. The chickens are now housed in a brand-new coup within the school grounds and, to show their gratitude, are laying enough eggs for the school to sell on for a small profit!



Whilst we have enjoyed welcoming our new additions, it is with sad hearts that we have said farewell to Revd Elaine Ollman, who is now enjoying a well-earned retirement.

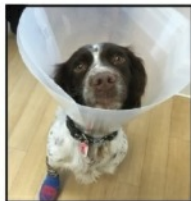
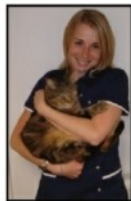
Revd Elaine has been extremely involved with the school and it was an emotional assembly when she said goodbye to the children. We wish her all the happiness for the future.



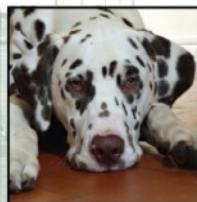
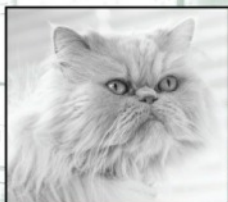


# Hollybank

VETERINARY CENTRE



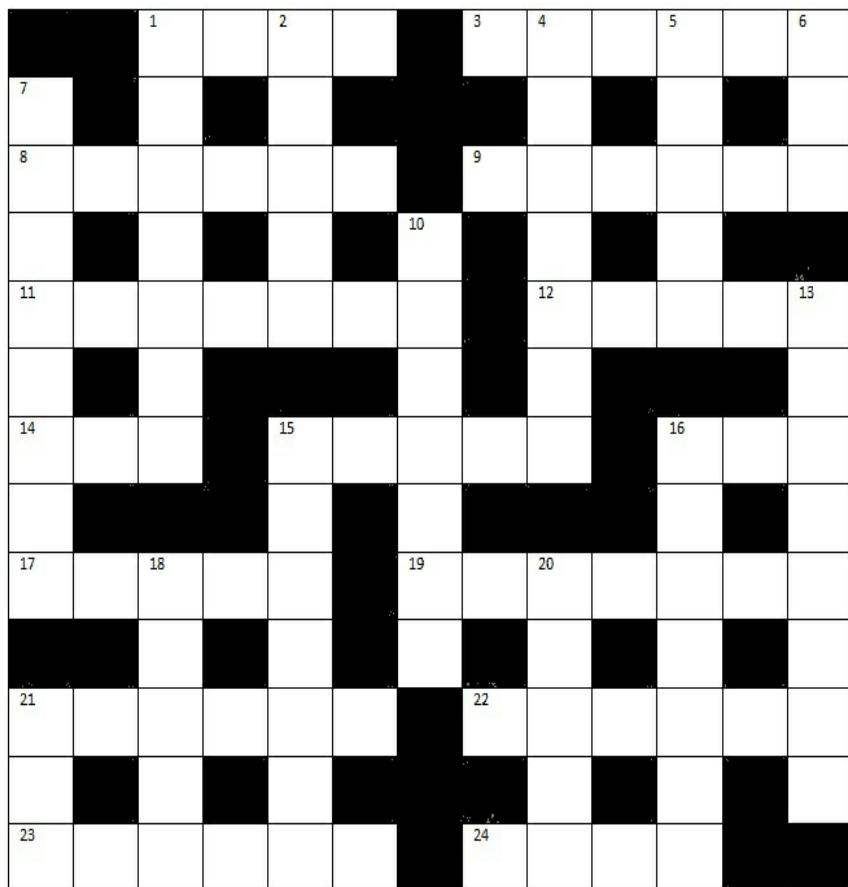
- ◆ *Independent small animal veterinary hospital*
- ◆ *Caring for pets and their owners*
- ◆ *24hr emergency service on site*
- ◆ *Exceptionally high standards of care, hygiene, facilities and equipment*
- ◆ *Professional, friendly, welcoming & kind*
- ◆ *Part of the local community*



**584 Chester Road | Sandiway | Cheshire | CW8 2DX**

**Tel: 01606 880890 | [www.hollybankvets.co.uk](http://www.hollybankvets.co.uk)**





**Across:**

1. Romans, beware of shelter (4)
3. Disliking a poem (6)
8. New York time awry, causing hostility (6)
9. With audible sigh, article cut down (6)
11. 'Fungus... Look a cherry!' (7)
12. Lush spot – nothing like small island (5)
14. Pious woman refuses all of it they say. (3)
15. Slip up in my writing. Happy? (5)
16. Floor covering unevenly spread during mealtime (3)
17. Curls back on bobbin (5)
19. Sounds as if American shout follows science student (7)
21. Former computer journalist left. (6)
22. Confused silky haired rabbit gives a groan (6)
23. Scandinavian loses indefinite number in the end (6)
24. Terrible colourer of cloth they say (4)

### Down:

1. Highlander wanted to stay in Europe (7)
2. Left after nutrient. It's essential (5)
4. '94 conservative win (7)
5. Ceremonies to be found in trite settings (5)
6. I hear setter can see (3)
7. Rodents – 2,000 at home in stages (8)
10. Traveller to old city is German (7)
13. Rested for 24 hours outside ancient city at the weekend (8)
15. Fishy hairdos (7)
16. Send letters bar one to south east initially, my sweet (7)
18. Gold particle shines at night (5)
20. Speak this in north India (5)
21. In himself, a mischievous being (3)

## Q U I Z - WOMEN'S SPORT

by *Steve Lacey*

(Answers on page 5)

This year marks 100 years since women got the vote, and the Women's World Cup has been played in France during June and July, so to celebrate here are 10 questions about women's sport.

1. Which woman has won the Ladies Singles at Wimbledon the most often?
2. Which athlete won 800m and 1500m gold at the Athens Olympics in 2004?
3. Which club has won the Women's FA Cup the most often, with 14 victories?
4. Who is the coach of the England Women's Netball team (at the time of the 2019 World Championships)?
5. Who took 6 wickets for 46 runs in the Women's Cricket World Cup Final at Lord's in 2017?
6. Which golfer was appointed a Dame in 2014?
7. Who did Great Britain defeat on penalties in the final of the Rio Olympics hockey tournament in 2016?
8. Who is the only British female swimmer to have won 2 Olympic gold medals?
9. Who won gold for Great Britain in the women's javelin in the 1984 Olympic Games in Los Angeles?
10. Who is Great Britain's most successful female Olympian of all time?



DELAMERE  
& OAKMERE

# NEWS

ISSUE 46 | SUMMER 2019

Cover Photo by *Bridget Austin*:  
Damson trees on Eddisbury Hill