

ISSUE 44 | WINTER 2018



DELAMERE  
& OAKMERE

# NEWS



## IN THIS ISSUE

**A GOOD/BAD YEAR FOR WASPS  
HOLIDAY LODGES AT FOURWAYS  
A RACING DRIVER IN OUR MIDST**

Cover photo by Barry Jones

We've got  
Christmas lunch  
all wrapped up!



More than  
120 cheeses to  
choose between



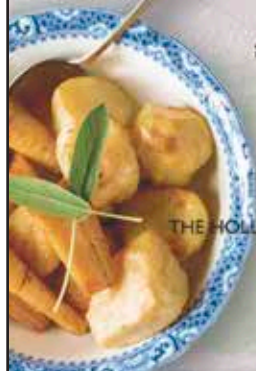
Cheshire  
reared Turkey



CHRISTMAS AT  
THE HOLLIES

THE HOLLIES FARM SHOP, FOREST ROAD, LITTLE BUDWORTH, TARPORLEY, CW6 9ES  
01829 760414 | WWW.THEHOLLIESFARMSHOP.CO.UK

Vegetables  
grown by  
the Cowap  
family



## IN THIS ISSUE

FORTHCOMING EVENTS	3	FOURWAYS HOLIDAY LODGES	19
A GOLDEN HALF CENTURY	4	WILDLIFE IN THE PARISH	22
FOREWORD	7	THE VILLAGE RACING DRIVER	24
LETTER FROM THE RECTOR	9	THE LAST DELAMERE SOLDIER	25
ST PETER'S NOTICES	10	TO DIE IN WW1	
QUIZ AND CROSSWORD ANSWERS	12	MARLEY DEVELOPMENT	26
COMMUNITY ASSOCIATION NEWS	13	WHY DO WE DISLIKE WASPS?	27
USE THE BUS!	14	ARE BADGERS BRAVE, STUPID	28
PARISH COUNCIL	15	OR JUST INSENSITIVE?	
CHAIRMAN'S LETTER		HATCHMERE'S SPECIAL TREES	31
DELAMERE WI	16	CROSSWORD AND QUIZ	33
KELSALL WELLBEING HUB	16	CHRISTMAS AT THE FISHPOOL	35
FESTIVAL OF FUN AT BLAKEMERE	17		



My Little  
Platter Co.



FOR ALL YOUR WINTER PARTY PLATTERS  
AND FESTIVE BITES!



Check out our festive menu at [mylittleplatterco.co.uk/festive-menu](http://mylittleplatterco.co.uk/festive-menu)



# Forthcoming Events

## THE WOMEN'S INSTITUTE

Date	Speaker	Title	Competition
Dec 11th		Christmas party	Home-made Father Christmas
Jan 8th	Cynthia Green	Travels in Peru	-
Feb 12th	Games evening	Indoor bowls	-
Mar 12th	David Walker	Knot tying	-

*President: Lorraine Roberts. Meetings are held at 7.30pm, every second Tuesday in the month except for August, at Delamere Community Centre. <http://delamereandoakmere.co.uk/delamere-womens-institute/>, <https://twitter.com/delamerewi>, <https://www.facebook.com/DelamereWI>*

## DELAMERE AND DISTRICT GOLDEN CLUB

**Oct 31st**

Delamere Derby and Skittles

**Nov 14th**

Card Bingo, Raffle and Quiz

**Nov 28th**

Christmas Coach Outing to Trentham Gardens. Non-members welcome. (See separate notice.)

**Dec 12th**

Christmas Lunch and Concordia Choir.

**Jan 9th**

Don and Jill Wilson will give a talk on their world-wide travels

**Jan 23rd**

Kelsall Scottish Dancers

**Feb 6th**

Hotpot lunch and beetle drive

**Feb 20th**

Skittles, table tennis and other indoor games plus hot crumpets

**Mar 6th**

Lorena Anderson: cookery demonstration

**Mar 20th**

Delamere Derby followed by Robin's Quiz

*Please see village website and posters for further dates and details.*

**NEW MEMBERS WELCOME!** We meet every fortnight on Wednesday afternoons, except August, at the Community Centre. No upper or lower age limit! For further information please contact Gloria or Robin Ackerley tel: 01829 752723.

## GOLDEN CLUB CHRISTMAS OUTING

The Golden Club is organising a Christmas coach trip to Trentham Gardens/ Shopping Centre, Staffordshire on Wednesday 28th November.

Departure from Delamere Community Centre 9.30am  
return by 4.30pm.

£8 members, £10  
non-members.

Please contact Gloria  
Ackerley - 01829 752723

## THE VILLAGE CAROLLERS

will be meeting again outside  
Delamere Stores on  
Christmas Eve, 10am-12 noon  
in aid of St.Peter's Church, The  
Methodist Church and Delamere  
Community Centre.

Just turn up for one or more  
carols, young and old and those  
in between. We say each year  
that the event is always the  
rehearsal for the following year!

Victorian costume optional.  
Gloria 01829 752723

## A GOLDEN HALF CENTURY



Robin and Gloria Ackerley got together with members of the Golden Club in July to celebrate their 50th wedding anniversary.

Robin, who founded this newsletter in 2005 and edited it for its first seven years, has not been in the best of health of late.

Despite his past and on-going medical conditions everything now seems under control, though he needs to build up the weight he has lost during the year. Those of you who have tried to telephone or chat with Robin will have realised he has lost his voice, but at last someone has been found who can operate on his vocal chords. However, he has been warned he will never sound like Pavarotti....





**OAKMERE  
MEGASTORE  
NEAR YOU!**

**32,000 SQ FT OF MOTORCYCLE CLOTHING & ACCESSORIES**



**MOTORCYCLE CLOTHING & ACCESSORIES**

**COME AND VISIT US AT J&S OAKMERE  
AND TRY OUT THE FOURWAYS  
CAFE AND GRILL TODAY!**

**EVERYTHING YOU NEED IS HERE**



**SIGN UP TO OUR WEEKLY NEWSLETTER TO WIN GREAT PRIZES!**

Sign up to our newsletter to receive automatic entry in to the #JSFREEBIEFRIDAY prize draw every week.  
Just go to [www.jsaccessories.co.uk](http://www.jsaccessories.co.uk) and click on "sign up to newsletter" at the bottom of our home page.



**FORRESTER'S**

**Telephone: 01928 789217**

**Mill Lane, Kingsley, Cheshire**

**Post Code: WA6 8HY**

**OPEN TO THE PUBLIC 7 DAYS A WEEK**

## **Place Your Christmas Turkey Order Now!**



**Boneless Turkey Crown £4.36/lb** (Approx £9.60kg)

**Whole Turkey £3.10/lb** (Approx £6.84kg)

*The Caldecott Family are the producers of Forrester's delicious Christmas Turkeys.*

*Robert Caldecott continues to raise Turkeys using the skills passed on to him by his Father.*

*They raise all of the Turkeys from day old and ensure that the birds are treated with the kindness, dignity and respect that they deserve. The Turkeys have clean bedding, fresh water and access to food at all times.*

*No growth promoters or additives are used and there is full traceability from farm to fork. The family uses age old traditional methods which are complimented by exceedingly high welfare and hygiene procedures to ensure that they meet the very highest standards.*



**To place your order please call into the shop  
or telephone 01928 789217.**

*Robert Caldecott—on the farm.*



We rarely plan a theme for the content of the newsletter, but it can happen of its own accord. In the last issue it was birds. In this one it's insects. Wasps appear in two separate stories, both involving brutal attacks. In one of these they were the aggressors, but in the other they were the victims - of an attack by badgers. A remarkable moth appears in David Wright's update on wildlife in the parish, while dragonflies and damselflies feature in the nature notes from Cheshire Wildlife Trust.

On a more personal level, we follow the exploits of one of the parish's budding Lewis Hamiltons, a would-be champion racing driver. We've got progress reports on the holiday lodge development at the Fourways sand quarry and the Earlsbrook development, plus lots more from our regular contributors, without whom the newsletter wouldn't survive.

The same applies to our volunteer

distributors of course, and even more so, our advertisers. With Christmas coming up, many of them have got something special to offer us.

As some of you may know, Phil and his family have moved down to Spurstow and although they have enjoyed developing the newsletter into what it is today we feel it is only fair to allow him to concentrate on his business and new home. Phil's graphic design skills have made an enormous difference to the newsletter, and the time and effort he has kindly donated to it are hugely appreciated. We wish him all the best. This does however mean we are looking for a designer to potentially take the reins and help with the newsletter going forward. If you or anyone you know might be interested, please get in touch at: [do\\_newseditor@yahoo.co.uk](mailto:do_newseditor@yahoo.co.uk)

Wishing all of you a very Happy Christmas and New Year.

Clive George and Phil Neave



**DELAMERE FARM SHOP**

**Home Grown Fresh Vegetables and Potatoes**

**Free Range Eggs**

**Christmas Trees**

**Follow us on Facebook**

**Coronation Farm, Station Road, Delamere**

**CW82HZ**



# ABOUT THE NEWSLETTER

Delamere and Oakmere News is published three times a year with the support of the Parish Council. The next issue is due in March!

## ADVERTISE WITH D&O NEWS!

Articles, ideas for articles, news of recent events or forthcoming ones, advertisements, photographs and any other contributions relevant to Delamere and/or Oakmere are all very welcome (inclusion subject to editorial discretion).

The newsletter is available to view on the Delamere and Oakmere Community website and you can also get a PDF file by email (contact us if you would like a copy).

## CONTACTS

Editorial and advertising: [do\\_newseditor@yahoo.co.uk](mailto:do_newseditor@yahoo.co.uk)

## SUPPORT US

All proceeds from advertisements go into the printing of the newsletter, so we really couldn't do this without you. Thank you!



☎ 01606 566 202

✉ [info@neavecreative.co.uk](mailto:info@neavecreative.co.uk)

🌐 [www.neavecreative.co.uk](http://www.neavecreative.co.uk)

WE ARE  
**NEAVE  
CREATIVE**

Print & Digital Design, Oakmere  
Designers of the D&O News

# LETTER FROM THE RECTOR

Dear Friends

A big thank you to everyone who supported the St Peter's Summer Fair at the beginning of July it was a lovely, summery day and we were grateful to all those who came along to the Community Centre. However, it does have to be said that in this particular battle between David and Goliath – Goliath being the Football World Cup and David being St Peter's – on this occasion Goliath won. That being said we had a happy time of fun and fellowship and raised just over £1,300 for church funds.

A big thank also to those who donated dried and tinned foods and toiletries to St Peter's, the Golden Club and Delamere Primary Academy for Harvest to support the work of the Mid-Cheshire Foodbank which assists local families who are in need.

I am writing this on a beautifully sunny afternoon, the cows are grazing peacefully in Farmer David's field and the autumn cyclamen are making a brave show in the churchyard. But if I look more closely the trees in the garden and surrounding the church that just a week or two ago were in full green leaf are now almost bare the brilliant yellow and copper leaves swirling in piles on the church driveway. The summer is over and winter is nearly upon us. The cold nights, frosty mornings and icy roads will soon be here again. Thomas Hood in his poem 'November' writes of:

No warmth, no cheerfulness, no healthful ease.  
No shade, no shine, no butterflies, no bees,  
No fruits, no flowers, no leaves, no birds! – November.

As the darkness draws in are you feeling like Thomas Hood, do you feel that there will never again be warmth or cheerfulness, that no fruit or flowers or birds describes your life?

Long ago the prophet Isaiah wrote 'The people walking in darkness have seen a great light.' At Christmas we rejoice in the wonder that God didn't leave us in darkness but sent his Son to live among us. 'For to us a child is born, to us a son is given, ... And he will be called Wonderful Counsellor, Mighty God, Everlasting Father, Prince of Peace.' (Isaiah 9:2, 6 NIV)

As you gather in your homes with friends and family or with your well-loved pet may the joy of the angels, the eagerness of the shepherds, the perseverance of the wise men, the obedience of Joseph and Mary and the peace of the Christ child be yours this Christmastide.

I look forward to welcoming you to St Peter's over Christmas; Brian joins me in sending you all good wishes for a happy Christmas and a peaceful New Year.

Do contact me by telephone or email if you would like me to visit or pray for you.

Brian joins me in sending you good wishes.

With all good wishes

Revd Elaine

The Rectory, Chester Road, Delamere  
01606 88 2184  
rectorstpeters@btinternet.com

<https://www.achurchnearyou.com/delamere-st-peter/>

# St. Peter's Notice Board



## From the Registers – February to October 2018

### We welcomed by Baptism:

March

Oscar Raymond Hitchen-Done son of Daniel and Amy

May

Jessica Elizabeth Fay  
Dilliway-Parry daughter of Angus and Libby

July

Jack William Strathdee Clark son of Tim and Martina

August

Kian Paul Rowland son of Paul and Kerry

October

Samuel Paul Lynch son of Steven and Hannah

### We celebrated the Marriage of:

September

Christopher Duncan Ramsay and Claire Elizabeth Platt

### We said Farewell to:

March

Colin Parsonage

April

John Nicholas  
Neville Cook

May

Eric Walker

September

John Shagouri

## CHRISTMAS SERVICES

### Sunday 23rd December 2018

10.30am – Coffee and Carols

6.30pm – Village Carol Service

### Christmas Eve

4pm – Christingle – a service for children of all ages – 0 to 99!

11.30pm – Holy Communion

### Christmas Day

8am – Holy Communion (Book of Common Prayer)

10.30am – Family Communion – bring one of your presents to show.

*Details of all our services are on the web-site  
<https://www.achurchnearyou.com/delamere-st-peter>*



# FUTURE EVENTS (DV)

## Plough Sunday:

We will be celebrating Plough Sunday with a special service on 20th January 2019 (DV) at 10.30am the preacher will be Ven M Gilbertson Archdeacon of Chester . After the service there will be a Ploughman's Lunch at The Rectory.

## Lent & Easter 2019:

Lent begins on Ash Wednesday – 6th March, Maundy Thursday – 18th April, Good Friday 19th April and Easter Day 21st April.

There will be a service of Holy Communion at 7pm on Ash Wednesday and commencing on 14th March Compline (Night Prayer) will be said each Thursday evening at 7pm the bell will be rung before the service as a reminder that the service is taking place and that prayers are being offered for the local community.

Details of the Easter Services will be in the next newsletter and on the web-site. For those who like to plan ahead! Easter Day in 2020 is 12th April. (DV)

## St Peter's Churchyard:

In common with other local churchyards and cemeteries any Christmas wreaths and floral tributes remaining in the churchyard will be removed at the end of February 2019

## DO YOU LIKE TO SING?

Then join a Village Choir to sing at the Village Carol Service on Sunday 23rd December at 6.30pm

Rehearsals are at Peter's on Saturday 1st, 8th & 15th December from 10.30am to 12noon and before the Carol Service on the day at 4.00pm.

Musical Director - Dr Martin Cook

Just come along or contact Revd. Elaine 01606 882184 for more details

## SOCIAL BALLROOM DANCING:

Would you be interested in having a social ballroom dancing session at the community centre, one afternoon per week?

If so, contact: Malcolm Collins, 01606 883746 or Ann Walker, 01606 889357

# OAKMERE METHODIST CHURCH

In the main church at 10.45am every Sunday morning for a service led by a Methodist Local Preacher or Minister. One service a month includes the sacrament of Holy Communion, led by a Minister (Presbyter).

Contacts: Ann or Eric Wright (01829 732950) or Rev Andrew Emison (01928 733180). In February the Chapel was pleased to help Roseanne Joyce to raise money for Delamere School.

The Chapel will be joining St Peter's Church for the Remembrance Day Service in November.

## KETTLERCISE<sup>®</sup> IS HERE

**One piece of equipment with one goal!**

**Very efficient fat burner**

**Fridays 9:15 am Cuddington & Sandiway Village Hall**

### QUIZ & CROSSWORD ANSWERS...

#### Answers to quiz

1. Jo Nesbo, 2. Brodvingnag, 3. Wilkie Collins, 4. Gryffindor, Hufflepuff, Ravenclaw and Slytherin, 5. Sir Alex Ferguson, 6. Hercule Poirot, 7. Middlemarch, by George Eliot, 8. Nibbles, 9. The Lake District, 10. Lothlorien

#### Answers to crossword

Across: 4. sin, 6. poppycock, 9. alcove, 10. whacko, 11. agate, 12. near, 13. epic, 14. met, 15. dim, 19. oft, 20. snap, 22. unit, 23. venom, 25. enigma, 27. dragon, 28. Agincourt  
29. net

Down: 1. appears, 2. Syrian, 3. no sweat, 4. skua, 5. Lear, 7. exorcist, 8. scanty, 14. menswear, 16. dotage, 17. invalid, 18. humdrum, 21. entice, 24. knot, 26. goat

## **Safeguarding and Data Protection**

The Management Committee are in the process of checking and updating the Safeguarding and GDPR (General Data Protection Regulations) Policies for the Centre. These are vital policies for Centre users to have confidence in the work of the Management Committee and the safety of the building. If anyone has expertise in the subject of Safeguarding, Health & Safety and related topics, and would be willing to help us with that policy, we would be delighted to hear from you.

## **Spending in the Current Year**

The Management Committee is expecting an operating surplus of around £4,500 this year and, at the September meeting, decided to do the following in the current year:

- Install additional lighting to both entrances and the main car park;
- Re-cover the snooker table;
- Purchase new card tables and additional small tables;
- Purchase display boards for the Art Group, which will be available for hire by any Centre users;
- Set aside any remaining surplus towards resurfacing the Car Park; and
- Look at storage, and how we can make best use of the Store Room and Pump House.

Unfortunately, we will have to spend some of that surplus on replacing lead flashing from the roof as we have, once again, been the victims of theft – for the second consecutive year. We hope to recoup some of the cost from our insurance, but this may have a knock-on

effect on next year's premium. We have replaced the lead with a lead-free alternative, so this should not happen again!

## **Quiz Night**

The next Quiz Night will be held on Friday 7th December, with the first question being posed at 7.45. More details can be found elsewhere in the Newsletter and at the Community Centre, or email Steve Lacey.

## **Arts and Crafts sale**

The local Art Group are holding an Arts and Crafts Exhibition and Sale at the Community Centre on Sat 24th November 10am to 4pm and Sunday 25th November 12pm to 4pm. Free admission! Why not have a look to see if anything takes your fancy, either for yourself or a Christmas gift?

## **Bookings**

The Main Hall is used most evenings during the winter months but is generally available at weekends and during the day – on certain days! We also have the smaller Bowling Room and a Meeting Room that can accommodate up to 16 people; both are available for the majority of the week. If you want to book any of the rooms, either on a regular basis or for a one-off event, then please contact Lorraine Roberts, our Booking Secretary, on 01606 889188.

It seems a bit early, but a Merry Christmas and Healthy 2019 to Centre Users, current and future!

Paul Dean, Chairman  
pauldean02@yahoo.com

Steve Lacey, Treasurer  
steve@slamonline.co.uk





*Remember the summer? Paul Dean surveys the dried-up bowling green  
photo Gloria Ackerley*

## USE THE BUS!

Since Arriva stopped running the No. 82 bus, Cheshire West and Chester have found another operator, D&G Bus based in Wincham. CW&C are not funding the service (except for those of us with a bus pass), so its future depends on its commercial success. In other words, use it or lose it.

The service runs hourly, Monday to Saturday. The last bus from Chester leaves the interchange at 17.45, while the last one from Northwich departs from Watling Street at 16.25. There is a later bus from Northwich, but only as far as Sandiway.



The full timetable is available at:  
[dgbus.co.uk/assets/82\\_2018-10-29.pdf](http://dgbus.co.uk/assets/82_2018-10-29.pdf)

Christmas is coming, the geese are getting fat, please put a penny in... okay, I'll stop there. Christmas is however just around the corner, and I am sure the enthusiastic teams running events through Delamere Forest will do a great job as they do every year. Let's not forget our local farmers when you're out shopping for the Christmas Table; they never cease to impress.

Looking back at 2018 though, it has been another great year for Delamere and Oakmere. Certainly the hot summer made a difference, but with artists like Gary Barlow and Paloma Faith performing at Forest Live, hundreds racing at events like Hellrunner (not for me thanks), and the excellent beer festival put on by the PTA at Delamere Academy, there were certainly plenty of opportunities to get out and about.

Notable news has come with the start of work on the new lodges in the Fourways Quarry site; some councillors met with the site manager recently and the report was impressive. I certainly hope that we can work closely with the new sailing club as residents. Work also seems to have started on the lodges in the Forest. Whilst the final decision was greeted with mixed reactions, it is now important we work effectively with Forest Holidays to ensure the new facilities are well managed, and that the surrounding infrastructure is properly developed. With work progressing at the old Marley Tiles site as well, there are certainly some exciting times ahead.

Increased development across Delamere and Oakmere is, however, likely to be on

the horizon; indeed there were reports recently about one plot of land being reviewed for potential by developers. It is for this reason I raise the idea of a neighbourhood plan again. To take on a challenge like this, and thereby exert some local control over planning and development, we would need quite a few volunteers. If you think you can add some value and would like a say, please do get in touch.

On a final note, many thanks to all past and present councillors. Two councillors unfortunately had to move on to other pastures, although both will remain as key points of contact on local projects / areas of concern. This does mean that we currently seek a councillor for the Delamere ward, and one for the Oakmere ward. If you feel that you could help us make local decisions for the benefit of our community, please do get in touch with our clerk Joanne, without whom none of this would be possible.

That's probably about enough from me, so I will wish you the very best of wishes through this festive season. Please do feel free to call me to discuss any local issues or concerns, at any time.

John Edwards  
Chair, D&O Parish Council

Following on from the last report, we enjoyed learning about the Civil War in Chester with Ed Abrams on a hot evening in July. Our August garden meeting was held at the lovely home of Brenda and Ralph Bailes and we thank them for their hospitality. The weather was kind to us this year and fortunately not quite as hot as it had been. In our September meeting, John Benson pointed us in the right direction for researching family history and the October meeting saw Elaine Ollman, wearing a different hat, telling us of the history of Christmas decorations. As we decorate our houses this Christmas, I am sure we'll be

remembering the stories and legends behind the origin of the decorations.

We are now preparing for our AGM which is always held in November and this year, after all the necessary business, Cynthia Green will be giving a short talk on one of the projects of the Canal and River Trust.

It'll be party time in December when we will cater for ourselves again - this is always a good spread with a jolly atmosphere. Then before we know it, we'll be wishing each other a Happy New Year at our first talk of the year in January. We look forward to giving you a warm welcome - why not give us a try?

## KELSALL WELLBEING HUB

*Humphrey Claxton, Chair,  
Kelsall Patient Participation Group*

Kelsall is to have a new surgery. The doctors are keen that this should become a Health and Wellbeing Centre and have asked the Patient Participation Group (PPG) if it could raise the £130,000 that is required to build a Wellbeing Hub. The Hub will be open to all the patients of the practice, all the residents of Kelsall village and also those who live in surrounding villages.

Isolation in our communities, and not just amongst the elderly, is a growing problem which leads to unhappiness and sometimes to physical and mental illness. There are many aspects of modern life that are driving the growth of mental

illness but there are many things we can do to help people lead happier and healthier lives, to prevent them getting ill and to cope with long term medical conditions. We want to develop a caring and supportive community that helps people to remain fit and healthy, to reduce isolation, to deal with issues that lead to unhappiness and ill health, and to cope with mental and physical illness when that is needed.

For more information go to:  
[www.kelsallppg.com](http://www.kelsallppg.com)  
or enquire on [kelsallppg@gmail.com](mailto:kelsallppg@gmail.com)



# FESTIVAL OF FUN AT BLAKEMERE

Are you wondering how to entertain the children this Christmas? Blakemere Village will be laying on a journey through the Cheshire woodlands to find Father Christmas, his Elves and forest friends, and the captivating Snow Princess and her Unicorn. This 3-hour family event runs every weekend from 8th – 24th December – under-3s join for free. Tickets are from £19.95 per person plus booking fee, and include a gift from Father Christmas and festive photo opportunities. Gingerbread

decorating in Mrs Claus' kitchen and a festive skating rink will be available at additional cost.

Also at Blakemere Village this festive season, the 'Breakfast and Banquet with Santa' events return from 14th - 16th December with tickets from £11.95 plus booking fee - a magical feast for all the family, plus storytime and photo opportunity with Santa and his elves. For further information visit [blakemerevillage.com](http://blakemerevillage.com) or follow @BlakemereVillage on Facebook.



## *Olivia May*

**LOOKING FOR THE PERFECT CHRISTMAS PARTY OUTFIT?**

Olivia May is a high-end womenswear boutique, showcasing a range of unique, international designers.

View our Winter 18/19 collections in our Cheshire Showroom:

The Barns Lane End Farm, Kelsall Rd, Ashton Hayes, CH3 8BH  
Open: Monday - Friday | 9am - 5pm  
Tel: 01829 751600

**CHRISTMAS EVENT**

Look out for our exciting Christmas event on the 6th of December 2018

Contact [emma@oliviamay.org](mailto:emma@oliviamay.org) for further details

[www.OliviaMay.org](http://www.OliviaMay.org)

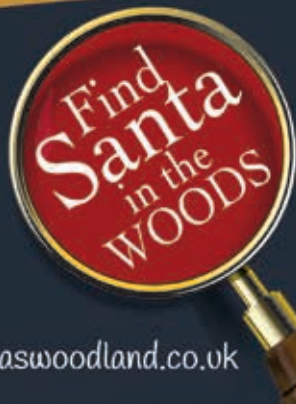
# EMBARK ON A MAGICAL JOURNEY THIS DECEMBER



- Outdoor Christmas theatre
- Meet & Greet with Santa plus gift
- Kitchen craft fun with Mrs Clavs
- Meet Snowy the Owl
- Outdoor skating and festive treats!

Blakemere Village, Chester Road, Sandiway  
Northwich, Cheshire CW8 2EB T: 01606 883261

f@BlakemereVillage    @visitblakemere    christmaswoodland.co.uk



# FOURWAYS HOLIDAY LODGES

In issue 34 (summer 2015) we reported a proposal by William Fergusson of Oakmere House to build holiday lodges on the site of the former sand quarry at Fourways, along with a sailing club facility. After several revisions the proposal was approved by Cheshire West and Chester Council in May last year, and work on the development has now begun.



*Artist's impression of the development*

The site was earmarked for tourist and recreation development in Vale Royal Borough Council's planning policy and in the subsequent Cheshire West and Chester local plan. The policy specifies suitable uses as non-engine powered water sports and strictly ancillary development, including timber chalets. The CW&C planning department expressed concerns that the proposed water sports activities might prove to be ancillary to the chalet development, rather than the other way round, but the planning committee were satisfied that the proposal complied with the policy.

Mr Fergusson has retained ownership of the land, with the development being undertaken by the Haulfryn Group, named after Haulfryn House at Aber-soch on the Llyn Peninsula, the family

home of the company's founders. Their first holiday home development was begun in 1948 at the Warren in Aber-soch, followed by several others in North Wales, and then in Devon, Cornwall and south east England. The company now operates 35 sites, all focused on high quality accommodation in attractive surroundings. It describes itself as "one of the UK's largest owners of prestigious holiday and residential parks", whose "facilities and services are among the best in the business". The Fourways development, to be known as Delamere Lake, is in the holiday park category, meaning that buyers must have a permanent residence elsewhere. Typical owners will let their lodge out to other holiday-makers when they are not staying in it themselves.



*Completed lodges*

When we visited the site at the beginning of October the first six lodges had been completed (including a fully finished show home), another four had been started, the sailing club and reception buildings were almost finished, and extensive landscaping was under way. The overall impression was that the work is indeed being carried out



to a high standard, and that the end result will be an attractive holiday destination for water sports enthusiasts and anyone wanting to relax in a scenic lakeside setting.



*The view from the show home*

As well as sailing there will be facilities for canoeing and maybe swimming, but no motorised water sports (the planning permission prohibits it). It is intended that local people will be able to use these facilities, probably through relevant organisations, though no arrangements have yet been made.



*The sailing club building under construction*

The lodges are being built around the north eastern shore of the lake, with the sailing club on the western shore of the peninsula. A reception building has been built near the entrance to the site, which is accessed through the old quarry entrance on Chester Road.

The plan allows for 134 lodges in total (down from the 200 in the original proposal). After the first ten, the rate of construction will depend on the level of demand, so it is likely to be several years before they are all complete. The plan identifies six main phases, starting on the peninsula and then working east.

Many birds have occupied the site since quarrying ceased, including great crested grebes, herons, kestrels, lapwings, meadow pipits, mistle thrush and song thrush, oystercatchers, reed buntings, sand martins, shelduck, skylarks, snipes, sparrow hawks, tufted ducks, wheatears and willow warblers. Wintering birds have included gadwalls, golden eyes, green woodpeckers, smews and wigeons.

To minimise disturbance the entire periphery of the site is excluded from development, except in the immediate area of the entrance. This includes all the land around the western, southern and south-eastern shores. Within the excluded area five plots have been designated for ecological mitigation and enhancement, focusing in particular on habitats for skylark, snipe, reed bunting, lapwing, butterflies and bees. Within the development area the south-eastern part of the peninsula will also be set aside for breeding birds, particularly lapwing, protected by hedging and dog-proof fencing. Boats will be restricted from landing or launching on the shore of the protection zone, and a line of buoys will be laid across the lake to prevent them from accessing its southern part.

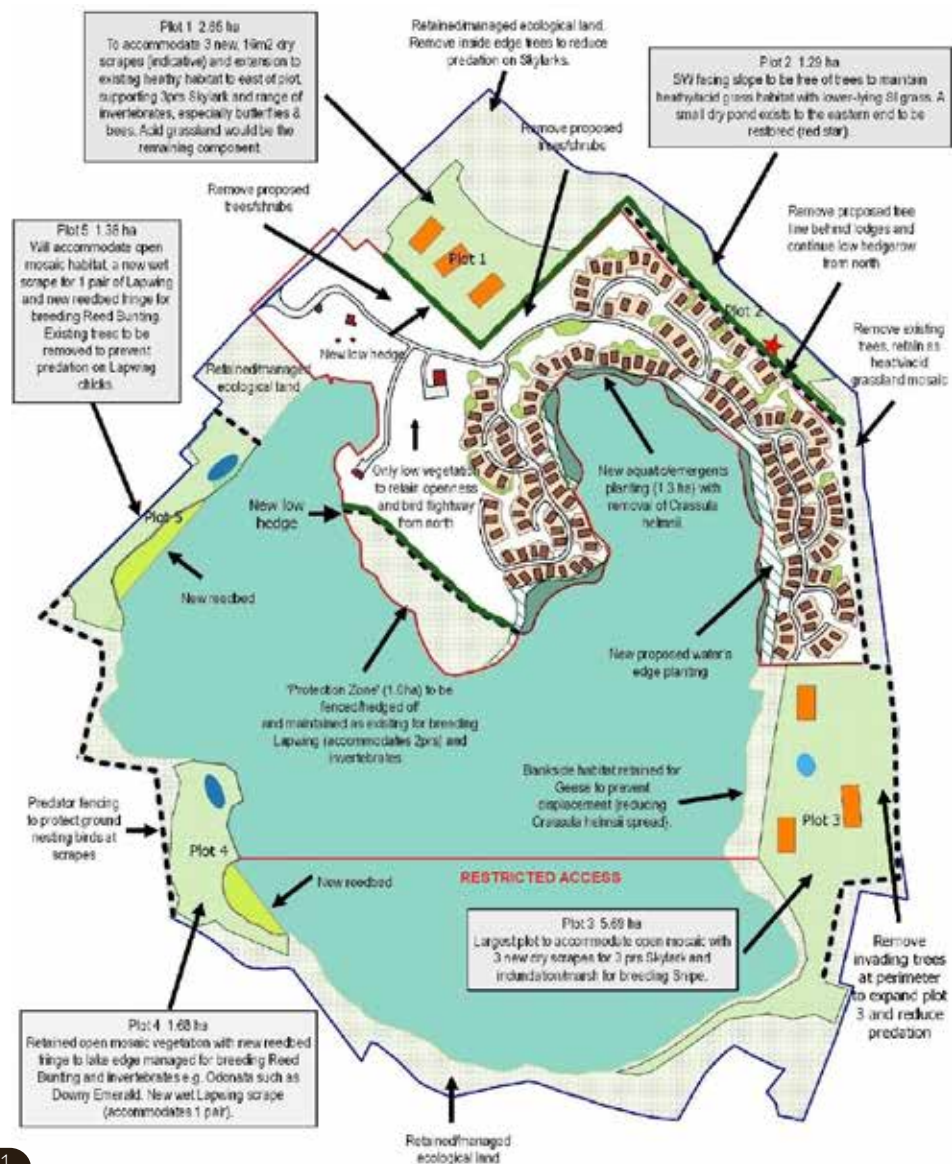
When the parish council considered the application in 2015 its prime concern was the impact on traffic, and it requested that if the development were to go ahead money should be set aside to improve the Abbey Arms junction and control speed on the A556. CW&C looked into this, and concluded that the amount of traffic generated would be too small to warrant it.

Whatever the pluses and minuses of how the tourism development will affect



the parish, the dreary worked-out sand quarry that was Fourways is already well on the way to becoming a beautifully contoured lake in a woodland setting teeming with wildlife. How might we get to see it, other than from the top of Eddisbury Hill or the top a No. 82 bus? Haulfryn are in discussions with representatives of a number of local organisations and youth groups who are keen to use the water, including Youth Sailing, Sea Cadets, the North West Rowing Group and open water swimmers. Possibilities of embracing other local groups will also be explored. Alternatively, you could buy a lodge. You can find more details at:

[haulfrynholidayhomes.co.uk/our-parks/north-west-england/delamere-lake](http://haulfrynholidayhomes.co.uk/our-parks/north-west-england/delamere-lake)



Hummingbird Hawkmoths have been seen in several locations this summer. This daytime flying moth is a migrant from the south of France. It visits the south coast of England in small numbers each year.



*Hummingbird Hawkmoth,  
© Jerzy Strzelecki, Wikimedia Commons*

It is so named from the way it flies – hovering in front of flowers while probing for nectar with its long tongue (proboscis). Whilst hovering it beats its wings at a high speed making a high pitched humming sound. It flies very fast with a darting action. Coloured grey with orange hind wings it is an impressive insect – so much so that a friend from Utkinton was adamant he had a Hummingbird in his garden! I had one in my garden for a week in mid August, feeding mostly on Honeysuckle and other blossoms.

The Fox holds a special place in English folklore. Many tales are told and sung of the cunning fox. Medieval poets symbolized Renard as the “cunning schemer of the animal kingdom”. There can be no doubt that foxes take domestic fowl, game birds and wild birds’ eggs and chicks. Given the chance if a fox can kill it – he will eat it or most of it!



*A fox in the Delamere snow. For the cover of this Christmas issue we couldn't resist re-using this superb picture taken by Barry Jones, which first appeared in issue 33.*

As a young boy, on a small farm in the 1950's I heard stories of foxes sneaking up to homesteads in search of fowl and saw the aftermath of such visits. At the time, few people could afford to lose a hen, duck or goose. Mr Fox or Charlie as he is often known, was fought off with every weapon available. Today the fox is still a cunning predator. Its numbers are controlled on large country estates and game shoots. Conservationists will go to great lengths to protect colonies of ground nesting birds with electric fences or 24 hour patrols or watches during the nesting season. The fox is one of the major threats along with crows to the future of breeding curlew in the British Isles. Despite the conflict with man's interests, the fox is one of the most handsome members of our native wild animals.



Sxy & Fabulous  
SKIN & BEAUTY SPA



HIFU  
FAT FREEZING

Announcing our new  
innovative treatments:

**HIFU** is the latest  
powerful face & body  
combination for skin **lifting**  
& **targeted fat reduction**

using the most up-to-date,  
clinically proven HIFU  
technology to treat both  
face & body concerns.

Located in Ashton Hayes,  
near Frodsham in Cheshire.  
All our laser and skin  
care treatments are  
provided by highly qualified  
professionals with excellent  
experience in the field.

[www.sxyfabulous.co.uk](http://www.sxyfabulous.co.uk)

01829 759332

# SPONSORS WANTED FOR THE VILLAGE RACING DRIVER!

Yes, we have a racing driver in our midst. Nine year old Rowan Cartwright is currently the leading driver in the Cadet class of the NATSKA national karting championship.



*Rowan Cartwright with one of his winner's trophies*

Rowan won the first two races of the 2018/19 season, and was leading in the third until he locked his brakes going into a bend and lost points for escaping through the chicane. He's still top of the championship table though, and plans to stay there until the season reaches its climax in July of next year.

Karting is serious motor sport. Not to be confused with go-karting, which any of us can have a go at, it's the first step on the ladder of officially organised competitive motor racing. You can't compete without a licence from the Motor Sports Association, for which you

have to pass the equivalent of the driving test, both written and practical. Formula 1 champions Ayrton Senna, Michael Schumacher, Sebastian Vettel and Lewis Hamilton all began their careers in karting.

Inspired by Lewis Hamilton, Rowan had his first drive in a go-kart when he was five. He was soon back for more, and had his first race in the karting championship when he was eight, speeding round the track at over 50 mph. Next year he will be competing in the Hooton Park IndiKart series as well as the NATSKA championship, giving him a better chance of being spotted by a talent scout. But all of this costs money, a lot of it. He's already on his second kart, costing over £2500, and with all the other expenses (including specialist tyres, which wear out fast) the annual bill comes to several thousands.



*Rowan Cartwright (no. 26) in a wheel-to-wheel battle*

To really make his mark Rowan needs sponsors, local (or not-so-local) companies keen to have their name emblazoned on his kart, or anyone who would like to help out. If you are interested, talk to Lee at Delamere Stores or contact him on 01606 882226 or [leecartwright55@yahoo.com](mailto:leecartwright55@yahoo.com).



# THE LAST DELAMERE SOLDIER TO DIE IN WW1 *By Don Wilson*

10th October 1918 was the centenary of the death of the last Delamere soldier to die in WW1, just one month before the end of hostilities.

Private Henry Sherlock Barlow was in the Yorkshire Hussars Yeomanry, and died at the age of 42 at sea. He lived in Sandiway with his wife Mary, and his parents were living in Wayside Bungalow, Delamere. He is commemorated on the Hollybrook Memorial, Southampton, for those who died at sea with no known grave.

Henry was with a large group of military personnel who embarked on the RMS Leinster at Dublin for Holyhead. Of the 771 souls on board including crew, there were postal workers and civilians, but the majority were soldiers, sailors and airmen from Ireland, Britain, Australia, New Zealand, Canada and the USA.

The ship left Kingstown, Dublin, just before 0900, in fine weather, but rough seas following recent storms. Just before 1000 a torpedo fired by German submarine UB123 just missed the Leinster, a second struck the ship's port side. The crew attempted to turn the ship back, but a third struck the starboard side, and the Leinster quickly sank. There were some survivors in lifeboats, some clinging to liferafts and wreckage, but casualties were very heavy, with the loss of 565 souls out of 771. The submarine itself was also lost in a minefield on its way back to Germany.

The actual sinking put the approaching Armistice into jeopardy. The US President was particularly critical, 'the Germans making proposals for peace

while its submarines were engaged in sinking passenger ships'. As a consequence on 21 October, submarines were ordered to cease hostilities and return to port.

It is possible that our Henry was going on leave when he boarded the Leinster. At that time his regiment had been stationed in Ireland since January 1918, and Henry was sailing with numerous military personnel from various services and regiments. There is just one surviving document regarding monies owing, there was just one pound, five shillings and eleven pence for his widow. The usual War Gratuity was stamped in red 'NOT ADMISSABLE'.



*Display of WW1 memorabilia in St Peter's*

Construction of the first houses has begun, starting with the show homes, which are due to be completed by Spring 2019. The first occupation is expected in the late summer of 2019, with overall completion of the project scheduled for August 2020.



Work has continued on laying the new water main and gas main, extracting peat from the site, and preparing the ground for the roundabout. Having been delayed by wet weather the peat extraction has proceeded apace, as evidenced by the many lorries trundling up and down Station Road. Yet more lorries are bringing material to replace the pool of water that replaced the peat.



The entrance road and roundabout will sit on top of the aqueduct that carries water from Lake Vrnwy to Liverpool. The original cast iron pipes weren't strong enough to bear the load, even with reinforcement, so they have been

replaced by new ones made of stainless steel.



*The old aqueduct pipes after removal*



*The new aqueduct pipes being installed*

The work on the aqueduct has taken much longer than expected, and construction of the roundabout is now not expected to begin until early 2019.

# WHY DO WE DISLIKE WASPS?

By Steve Cockroft



There appear to have been more wasps around this year, possibly due to the hot weather. When bees fly into my conservatory (this often happens in the summer as the door is invariably open), I always use the “glass and a piece of paper” trick to catch it, take it outside and release it. My reaction is different when it comes to wasps, and judging by the reaction of other people when just one wasp is flying around in close proximity, it appears that most people dislike them, even hate them. Wasps do have their place in the grand scheme of things. They pollinate, they feed on nectar and many harmful insects, but they also eat bees and their honey. Unlike bees, the paper-like wasp nest is only used to rear wasp larvae. So whilst there has been a long term symbiotic relationship with bees for the purpose of collecting honey, wasps are definitely not appreciated.

Whilst trimming back some undergrowth during late August, I felt a sensation on my left arm that was like that of a stinging nettle. It was actually a wasp sting. From a hole in the ground (the entrance to their nest), a cloud of wasps surged out. When a wasp stings (it can sting more than once), it releases a

pheromone that acts as a call for backup and then you can be in real trouble. If you make a run for it, as I did, they will follow you and can be extremely aggressive. Flailing your arms around to keep them off your face, eyes and lips is a natural reaction. It helped in my case, but even so the result was over 42 stings on my arms and torso.

Eventually and with my wife’s help, they dispersed. With so many stings, the sensation is like that of suffering burns and is extremely painful. In these cases, hospital treatment and the use of steroids is necessary. It takes a few hours for the pain to subside but it still remains very uncomfortable. Several days afterwards you still have to contend with itching.



So how do I feel about wasps? I will certainly be more careful in future before doing any gardening.

# ARE BADGERS BRAVE, STUPID OR JUST INSENSITIVE?

By Kay George



Hot dry summers are obviously a problem for wild animals. Although something of an omnivore, the badger's main food is the earthworm. These invertebrates tend to be inaccessible during summers like the one we've just had, as they dig deeper to find the moist environment which is essential to their survival.

It is therefore in these conditions that you are most likely to observe what we did in our garden in June. This was an underground wasp nest in a sandy mound and has been dug out from the side.



What the badgers are after are the larvae which are presumably nice and juicy. They are apparently able to tolerate the

many stings they must incur in the process. It is thought that maybe their hides are pretty impenetrable, though I would think their faces may be more vulnerable. Obviously they feel the prize is worth any discomfort they may experience.

In the photos you will observe that the wasps are hard at work presumably repairing the cells and caring for any remaining larvae. Over July and August they also partially recovered the nest from the bottom with soil and repaired the outer structure of the nest itself. I intended taking another photo of the completed work, but in early September there was another attack – you may be able to discern the distinctive long narrow badger claw marks at the base of the picture below – causing further considerable damage. The wasps are gone. They seem to have abandoned it rather earlier than would normally be expected. Usually a nest's end comes after a hard frost or two. They are not re-used; they make a new one next year out of paper made by chewing dead wood, which may quite possibly be from your fence, shed or garden seat if untreated!



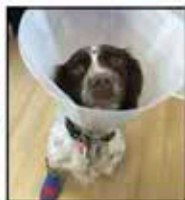
So, brave, stupid or insensitive? Probably a mixture of brave and insensitive (not in a derogatory way), but certainly not stupid.



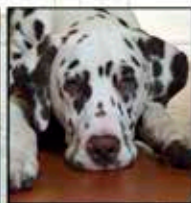


# Hollybank

VETERINARY CENTRE



- ◆ *Independent small animal veterinary hospital*
- ◆ *Caring for pets and their owners*
- ◆ *24hr emergency service on site*
- ◆ *Exceptionally high standards of care, hygiene, facilities and equipment*
- ◆ *Professional, friendly, welcoming & kind*
- ◆ *Part of the local community*



584 Chester Road | Sandiway | Cheshire | CW8 2DX

Tel: 01606 880890 | [www.hollybankvets.co.uk](http://www.hollybankvets.co.uk)

the Good Garage Scheme  'Approved Dealer' with a 100% customer rating



**NickTomlinCars**  
www.nicktomlincars.co.uk



# YOUR ONE STOP SERVICE CENTRE

**Specialists in ALL SERVICING & REPAIRS**



Follow us on facebook for our latest offers

**servicesure**  
AUTOCENTRES

**CALL US TODAY ON 01606 889 494**

Chester Road, Delamere, Nr. Northwich CW8 2HB

Open Mon to Fri - 9am - 5.30pm Sat - 9am - 1pm

## MOTs

Free pick ups & drop off  
service or courtesy car

## Servicing from £89<sub>+VAT</sub>

Our service does not invalidate your manufacturer warranty

- TYRES • EXHAUSTS • CLUTCHES • BATTERIES •
- BRAKES • DIAGNOSTICS • RECOVERY SERVICE •

## 10% OFF MOTs THIS DECEMBER

Claim 10% off your next MOT in December with this coupon. TERMS AND CONDITIONS APPLY

Call to book your MOT on **01606 889 494**

This autumn CWT volunteers have been busy collecting seed from alder buckthorn trees at Hatchmere Nature Reserve. Alder buckthorn is a little known tree in the area, but it grows well on the acidic peat soil and heathland found on the reserve. The day involved the volunteers first learning to identify the tree, then identifying ripe fruit followed by many hours of seed collection. The target was 10,000 of the alder buckthorn seeds!



The seeds are now safely banked in the underground vaults of Kew's Millennium Seed Bank – as part of the UK's first national collection of tree seeds. Stored in a temperature and humidity controlled environment before being processed and transferred to deep-freeze conditions, the seeds should remain viable for many decades.

These collections of seeds will play a vital role in on-the-ground conservation work to protect UK trees and woodlands from threats such as pests and diseases like ash dieback. The collections, and associated data, are also available to researchers working on solutions to

tackle the many threats facing our woodlands.

As a partner of the project, so far this year Cheshire Wildlife Trust has collected seeds from five species of tree including wild cherry (below), guelder rose, wild service and hawthorn, with many more collections planned.



The work is part of the UK National Tree Seed Project, which has collected more than 12.5 million seeds, sampling from over 8,000 individual trees across the UK. The UK project is funded by players of People's Postcode Lottery.

## HATCHMERE

Hatchmere is one of a series of lakes and peatlands across the North-West formed by the glacial action at the end of the last Ice Age. It is a wetland site of international importance, designated as a Site of Special Scientific Interest (SSSI).

The mere is home to many birds including the beautiful great crested grebe. Reed bunting and willow warbler also nest among the common reed and lesser reed mace that almost encircle the mere. As





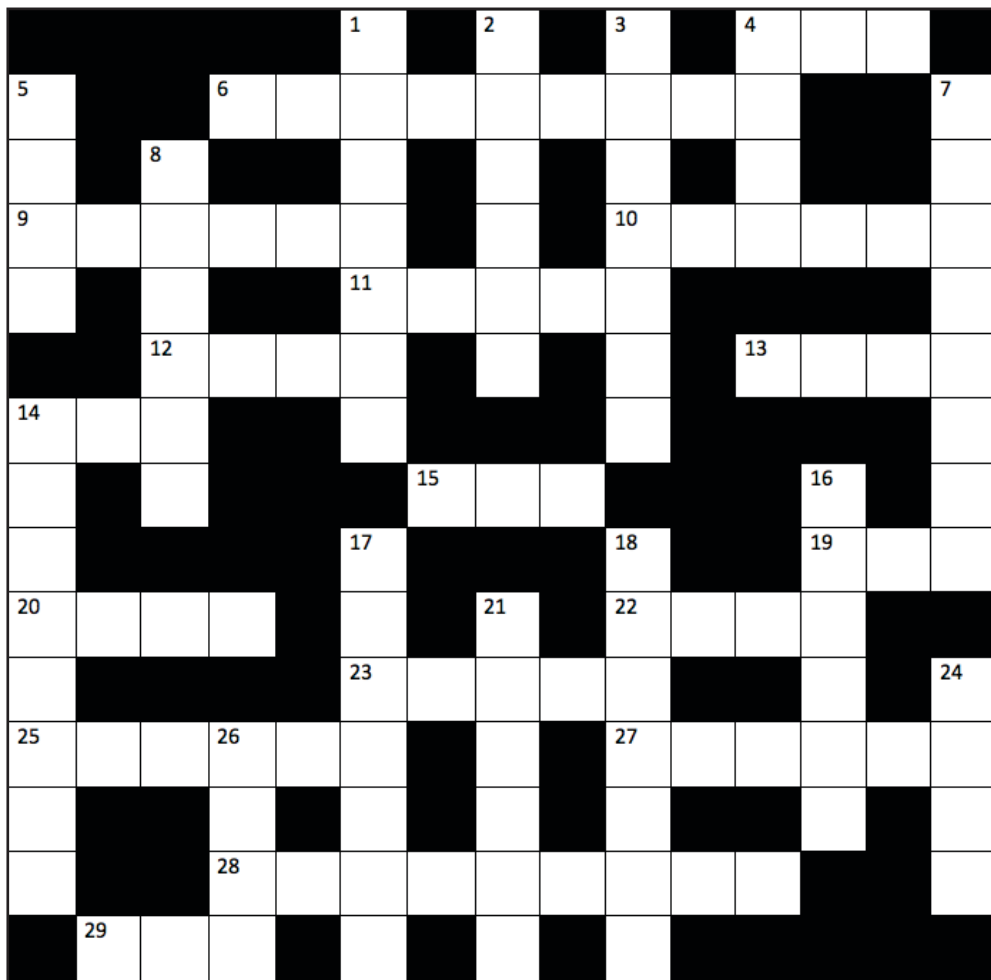
well as the mere itself, the nature reserve includes the surrounding fens, wet woodland and wet heath. Up to 13 species of dragonfly and damselfly have been recorded on the reserve, including the variable damselfly and the rare hairy dragonfly (named for its hairy thorax).

To the west of the mere the Trust has cleared large amounts of birch to enhance the wet mossland vegetation. Here there are heather, bilberry, cotton grass and sphagnum mosses. There are deep boggy pools hidden in the vegetation, so it is as well to keep to the path and watch where you put your feet.



*Male Hairy Dragonfly* (© Charles J Sharp, Wikimedia)





## Down

1. Seems to be mobile feature on organs (7)
2. Endless story comes before Royal Irish Academy night initially for fellow from the Middle East (6)
3. Dry jogger, no problem! (2, 5)
4. This bird can fly both ways! (4)
5. Play loses monarch for limerick writer (4)
7. Occur around killer whale, he drives out spirits (8)
8. Look over Turkey without borders, that's skimpy (6)
14. Males curse their clothing (8)
16. Spot era – second childhood (6)
17. Someone with fake illness? (7)
18. Unimaginative singer and percussionist make this very ordinary sound (7)
21. Tempt hospital department suspended (6)
24. Tie this wader (4)
26. This milk producer is involved and must undergo a test (4)

**Across**

4. In carousing bawdily, some would see an offence to confess (3)
6. A flowery crower? Rubbish! (9)
9. Other fellow makes cosy recess (6)
10. Hit circle, that's great! (6)
11. Stone for an opening (5)
12. Position included in drone arriving (4)
13. An image off the internet or a long story (4)
14. Opera? London police? Tube line? We gathered there anyway (3)
15. Amid failed start reversed, lights go low (3)
19. Poetically frequent, it measures nothing in the old way (3)
20. Take back the pans, they might break (4)
22. "You idiot!" is heard from the kitchen fitter (4)
23. Archdeacon has a gong, but he's pure poison (5)
25. Was it such a puzzle for Elgar? (6)
27. Go on and on and become flame thrower (6)
28. A place for drinking al fresco or fighting a battle (9)
29. Catch number backwards (3)

## A QUIZ ABOUT QUIZ SHOWS *by Steve Lacey*

*(Answers on page 12)*

10 questions about books, new and not so new, which you might have read or might want to. I make no personal recommendations!

1. Who writes the books featuring Norwegian detective Harry Hole?
2. Where did Gulliver's second voyage take him?
3. Who wrote The Woman in White?
4. What are the names of the 4 houses at Hogwarts School of Witchcraft and Wizardry?
5. Whose autobiography was called Managing My Life?
6. Which of Agatha Christie's detectives investigated the Mysterious Affair at Styles?
7. In which classic book are the central characters Dorothea Brook and Edward Casaubon?
8. Which of the following is not a book by Nigella Lawson? At My Table; Eating; Kitchen; Nigelissima; Nibbles.
9. In which part of the UK are the Swallows and Amazons books by Arthur Ransome set?
10. In the Lord of the Rings series of books, where does Galadriel live?

If you have enjoyed answering these questions, then why not join us on 7th December at the Community Centre for Quiz Night? Details elsewhere in the Newsletter.



Bella Revive

## NAILS, MASSAGES & BEAUTY THERAPY

Oakmere, Cheshire  
Call 07912 433 956

### NAIL TREATMENTS INCLUDING ACRYLIC AND GEL COLOURS BEAUTY TREATMENTS & PAMPER PACKAGES

Visit [facebook.com/bellarevive](https://facebook.com/bellarevive) for more details  
or give Ali a call on 07912 433 956



## nicola **gibson** ARCHITECTURAL DESIGN

ONE OFF HOUSES | EXTENSIONS & REMODELLING  
RESIDENTIAL DEVELOPMENTS | GARDEN ROOMS



All drawings prepared for and submitted to the  
Planning and Building Control departments on your  
behalf, including Listed Building and Conservation Area  
consent where necessary.



Merry Christmas and best wishes for 2019!

☎ Tel: 01606 301171 ☐ Mobile: 07813 034552

✉ Email: [nicola@njgdesign.co.uk](mailto:nicola@njgdesign.co.uk) 🌐 [www.njgdesign.co.uk](http://www.njgdesign.co.uk)



Delamere Community Centre  
5 Station Road, Delamere CW8 2HU

## Quiz Night!

On

**Friday 7<sup>th</sup> December**

Doors open 7.15 - Quiz starts at 7.45

**Tickets are £4 per  
person**

Includes quiz, tea, coffee,  
squeash and nibbles. You can  
bring your own alcoholic  
drinks/glasses if you prefer.

Quiz teams of between 4 – 6  
people; if there are not 4 of you  
please do come along as you  
can still be part of a team.

**Prizes for the winning  
team**

**Raffle**

Entry forms on the serving hatch at the Community  
Centre, or email [steve@slamonline.co.uk](mailto:steve@slamonline.co.uk)



# David Hodkinson Landscaping and Garden Maintenance Service

from small jobs to large

25 years' experience in the garden  
industry (formerly Acton Bridge  
Garden Centre Proprietor)

please call Dave on  
07791414919 / 01606 624364

email:  
gentlemengardeners@gmail.com

## ForestNet IT Service

Station Rd, Delamere

*Your Local Computer Support Service for  
the Home/HomeOffice/Small Business*

PCs Laptops Tablets  
Printers Routers Servers  
Troubleshooting/Problem Solving/Upgrades  
Software Installs/Upgrades  
Anti-virus/Malware issues  
Home/Office Networking  
Router/WiFi issues  
Broadband Security Controls

30 Years ICT experience  
Courteous Professional Service

Competitive Rates Fixed Price No Fix No Fee

Email: [enquiries@forestnet.co.uk](mailto:enquiries@forestnet.co.uk)

Tel: 07856 222415

Web: [www.forestnet.co.uk](http://www.forestnet.co.uk)



01606 882 219

*Motorcycles, Scooters, Trykes, Quads  
Cars, Vans and Three Wheel Cars*

*MOTs, Tyres, Servicing, Repairs, Air  
Conditioning, Diagnostics*

*Collection from local area*

### Opening Hours:

8.30 am – 5.30 pm Monday to Friday  
8.00 am – 1.00 pm Saturday (MOTs only)

**Tel:** 01606 882219

**Fax:** 01606 881700

Email: [spanns.garage@zen.co.uk](mailto:spanns.garage@zen.co.uk)  
[www.spannsgarage.co.uk](http://www.spannsgarage.co.uk)

**Dalefords Lane  
Whitegate  
CW8 2BW**

**Christmas  
parties**

**Christmas  
shopping**

**24-7 Cheshire Taxis**

**From 4 to 16 seats**

**Available every  
day through the  
festive season !**



**Club Class Taxis  
01606 46666**



# Christmas at The Fishpool Inn

## CHRISTMAS FAYRE

2 COURSES £22.95 / 3 COURSES £27.95

*Menu available 30th November – 24th December 2018*



Roasted butternut squash and sage velouté, toasted pumpkin seeds and crumbled goat's cheese croutes (v)

Chicken liver parfait, red onion marmalade and toasted brioche

Smoked salmon and Muncaster crab parcel, crispy fried langoustine, spiked Marie rose and lemon dressed house leaves

Roasted hot and crispy duck leg, caramelised apple and plum tarte fine, shallot puree, compressed watermelon and pickled apple

Warm goat's cheese, roasted red pepper and courgette terrine, sticky balsamic shallots, frisee salad and pickled golden raisins (v)

\*\*\*\*\*

Roast escalope of Cheshire turkey, sage and onion stuffing, chipolata sausage, creamed and roasted potatoes, roasted root vegetables and rich roast pan gravy

Scottish salmon a la plancha, creamed leek and morel mushroom fricassee, saffron cocotte potatoes, roasted salsify and a lemon and dill velouté

Slow roast shoulder of Welsh Valley lamb henry, gratin dauphinoise potato, honey and truffle butter roasted root vegetables, port wine and redcurrant sauce  
8 hour braised daube of beef, bourguignon garnish, horseradish creamed potato, glazed parsnips, dressed kale and Madeira jus

Roasted butternut squash, celeriac, Cashel blue and winter chanterelle pithivier, warm quinoa and fine herb risotto (v)

\*\*\*\*\*

Baileys and white chocolate New York style baked cheesecake,

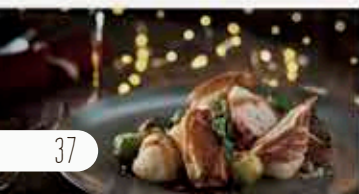
Madagascan vanilla chantilly, praline and brandy snaps

Fishpool Inn Christmas pudding, rum sauce and brandy butter

Classic tiramisu, Kahlúa and vanilla

Apricot and orange bread and butter pudding, tonka bean custard and vanilla ice cream

Three cheese selection, classic accompaniments, house conserve and water biscuits



## FESTIVE AFTERNOON TEA

£16.50 per person

Enjoy a seasonal twist on our delicious Afternoon Tea. Served Monday to Friday 2.30pm – 5pm, 3rd December to 28th December (excluding Christmas Day & Boxing Day).



## NEW YEAR'S EVE

£59.50 per person


Celebrate the arrival of 2019 in the beautiful surroundings of our Cheshire pub, with a delicious three-course dinner and live music from Andy Bayley, who will be performing a selection of swing and ratpack classics.



# The Fishpool Inn

Fishpool Road, Delamere, Cheshire CW8 2HP  
Tel: 01606 883277 info@thefishpoolinn.co.uk  
www.thefishpoolinn.co.uk

Owned and operated by Nelson Hotels www.nelsonhotels.co.uk

Find us on    TheFishpoolInn



# EASYLIFE

GARDEN MACHINERY

## WINTER SERVICING & REPAIRS

Bring your garden machinery into Easylife for a winter service or repair so it's ready the new year ahead.

Call today to book a service.

Easylife GM sells a variety of garden machinery to assist you in making your garden the best it can possibly be. With a wide range of manufacturers to make sure you have what you need all year round.

Mountfield

STIGA®

VIKING®

Cub Cadet®

STIHL®



HAYTER



MOWERS & MORE

01606 889833

[www.easylifegm.co.uk](http://www.easylifegm.co.uk)

Easylife GM, Farm Road  
Oakmere, Cheshire, CW8 2HB