



DELAMERE  
& OAKMERE

# NEWS



## IN THIS ISSUE

The old Roman road  
A new nature reserve  
It's election time

# EASYLIFE

## GARDEN MACHINERY

EasyLife Garden Machinery sells a whole range of garden machinery to assist you in making your garden the best it can possibly be.

Our mission is to provide you with good, honest, professional and impartial advice about the best products and services that are best suited to your particular requirements.

### MANUFACTURERS

**Mountfield**

**STIGA®**

**VIKING®**

**STIHL®**



**TORO®**

**Cub Cadet®**

**MITOX**

**HAYTER**

**SALES | SPARES | SERVICING | REPAIRS**

EasyLife GM, Farm Road, Oakmere, Cheshire, CW8 2HB  
01606 889833 | [www.easylifegm.co.uk](http://www.easylifegm.co.uk)



**MOWERS & MORE**

## IN THIS ISSUE

FOREWORD	4
ANSWERS TO THE QUIZ & CROSSWORD	5
FORTHCOMING EVENTS	6
LETTER FROM THE RECTOR	10
ST PETER'S NOTICEBOARD	11
FAREWELL AND THANK YOU	12
WHAT HAPPENS NEXT	12
OAKMERE METHODIST CHURCH	13
COMMUNITY ASSOCIATION NEWS	16
DELAMERE WI	18
PARISH COUNCIL NEWS	20
DEVELOPMENT ACTIVITY PROGRESS	21
ELECTION 2019	22
HORNETS	24
WILDLIFE IN THE PARISH	24
THE OLD ROMAN ROAD	26
NEW NATURE RESERVE	28
SPECIES RECORDING ON HATCHMERE	29
CROSSWORD	32
QUIZ	33



Can you spot the difference? If you look closely you might, but I hope it's not too obvious. When Phil Neave moved into the parish a few years ago he volunteered to apply his professional publishing skills to give the newsletter a new look, and what a difference it made! Instead of our decidedly amateurish black and white A4 photocopies we've had Phil's beautifully designed glossy booklets from issue 36 onwards. Sadly Phil and his growing family have moved again, but he's left us with a target to aim at. With the aid of some cheap and cheerful design software that can do most of the things that Phil did, once you've worked out how, here we are with another issue that carries on the tradition he created for us. Thank you Phil! You did us proud.

Another sad farewell is on the way as well, with another big thank you. This is the last issue in which Reverend Elaine gives us her regular letter as Rector of the parish. She will be retiring in June, when she and Brian will be going back to the Wirral. Thank you Elaine! You too have done us proud.

In May we could be saying goodbye to some of our parish councillors too, along with hellos to new ones. It's election time. Might you be a new recruit? We have details of what's involved and how to apply.

Among the other articles in this issue Don Wilson tells the story of the old Roman road that passes through the parish and David Wright gives us the latest news on local wildlife (including a response to a reader's enquiry about

an alarming visitor to his compost heap). More news on local wildlife comes from the Cheshire Wildlife Trust, along with the latest news on the restoration of the Magistrates' Court and other development activities.

As ever our thanks are due to our other regular contributors, including Steve Lacey with the quiz and 'Yeti' with the crossword. Alongside them we have a new contributor, Bridget Austin, who has given us the wintry scenes below and opposite, and the delightful celebration of spring on the cover, seen from the Linmere approach road. We are hoping that Bridget's photographic skills will be gracing future issues too.

Finally, as ever, a big thank you to our advertisers and distributors who keep the magazine going.

Clive George  
Editor



*Frozen Blakemere  
by Bridget Austin*



*A view from Old Pale  
by Bridget Austin*

## ANSWERS TO QUIZ AND CROSSWORD

### Answers to quiz

1. Six, 2. Visibility! (according to the Met Office, if visibility is less than 1,000 metres we call it fog; greater than 1,000 metres we call it mist), 3. The Weather Girls,
4. Strong breeze, 5. 40 Days (July 15<sup>th</sup>), 6. Storm Hannah, 7. Snowdrop, 8. Wind speed,
9. George Burns and Walter Matthau, 10. Dianne Oxberry

### Answers to crossword

- Across:** 1. Eliot, 3. gruff, 6. ethnic, 7. gigolo, 9. shook, 10. slip, 12. deed, 13. canteen, 16. toss, 17. room, 18. below, 21. pirate, 22. panini, 23. Delhi, 24. abase
- Down:** 1. Everest, 2. owns, 4. Riga, 5. Florida, 8. Constable, 11. packs, 12. donor, 14. stumped, 15. imagine, 19. mash, 20. snub

# Forthcoming events

## THE WOMEN'S INSTITUTE

Date	Speaker	Title	Competition
April 9 <sup>th</sup>	Eric Hodgson	Cheshire Magistrates	
May 14 <sup>th</sup>		Resolutions and Mini Show	
June 11 <sup>th</sup>	Jill Cox	Live for today, plan for tomorrow	
July 9 <sup>th</sup>	Donna Burstons	Tai Chi, Chen style	Something oriental

*President: Lorraine Roberts. Meetings are held at 7.30pm, every second Tuesday in the month except for August, at Delamere Community Centre. [delamereandoakmere.co.uk/delamere-womens-institute/](http://delamereandoakmere.co.uk/delamere-womens-institute/), [twitter.com/delamerewi](https://twitter.com/delamerewi), [www.facebook.com/DelamereWI](https://www.facebook.com/DelamereWI)*

## DELAMERE AND DISTRICT GOLDEN CLUB

March 20 <sup>th</sup>	Delamere Derby (Please bring 20p pieces)
April 24 <sup>th</sup> 1.30pm	Speaker Pete Turner: "A Tribute to Tommy Cooper"
May 8 <sup>th</sup> 1.30pm	Annual General Meeting followed by High Tea
May 22 <sup>nd</sup> 1.30pm	Speaker Jean Finney: Joyce Grenfell and Jean's cruising adventures
June 5 <sup>th</sup> 12.30pm	Summer Lunch Please bring any items for the green sales table
June 19 <sup>th</sup>	Summer Coach Outing - destination to be announced
July 3 <sup>rd</sup> 1.30pm	Sheena Stallard: "Exercises with Sheena"
July 17 <sup>th</sup> 2pm	Garden Party at The Paddock
Sept 4 <sup>th</sup> 1.30pm	Cookery Demonstration by Lorena Anderson
Sept 18 <sup>th</sup> 1.30pm	Harvest Service and Harvest of Talents .
Oct 2 <sup>nd</sup> 12.30pm	Birthday and Harvest Lunch followed by musical quiz and party games
Oct 16 <sup>th</sup> 1.30pm	John and Pam Baddley, British songs and singers
Nov 13 <sup>th</sup> 1.30pm	Delamere Academy Choir, tea and cakes, quiz, raffle.
Nov 27 <sup>th</sup>	Christmas Outing
Dec 11 <sup>th</sup> 12.30pm	Christmas Lunch followed by Concordia Choir

**NEW MEMBERS WELCOME!** We meet every fortnight on Wednesday afternoons, except August, at the Community Centre. No upper or lower age limit! For further information please contact Gloria Ackerley tel: 01829 752723.

# ABOUT THE NEWSLETTER

Delamere and Oakmere News is published three times a year with the support of the Parish Council. The next issue is due in July!

## ADVERTISE WITH D&O NEWS!

Articles, ideas for articles, news of recent events or forthcoming ones, advertisements, photographs and any other contributions relevant to Delamere and/or Oakmere are all very welcome (inclusion subject to editorial discretion).

The newsletter is available to view on the Delamere and Oakmere Community website and you can also get a PDF file by email (contact us if you would like a copy).

## CONTACT

Editorial: [do\\_newseditor@yahoo.co.uk](mailto:do_newseditor@yahoo.co.uk)

Advertising: [do\\_newseditor@yahoo.co.uk](mailto:do_newseditor@yahoo.co.uk)

## SUPPORT US

All proceeds from advertisements go into the printing of the newsletter, so we really couldn't do this without you. Thank you!

BASED ON AN ORIGINAL DESIGN BY

**NEAVE  
CREATIVE**

Print & Digital Design



☎ 01606 566 202

✉ [info@neavecreative.co.uk](mailto:info@neavecreative.co.uk)

🌐 [www.neavecreative.co.uk](http://www.neavecreative.co.uk)





# Oakmere Cricket Club



Oakmere CC have Senior Mens, Juniors (Boys and Girls) and Ladies teams playing weekend and mid-week matches and Qualified Coaches provide structured training sessions across all teams.

New Players (male and female, all ages), Spectators, Volunteers and Sponsors are always more than welcome!

## This season's outdoor training will commence as per below:

- Seniors: Mondays 8<sup>th</sup> April 6.30pm
- Juniors: Wednesday 17<sup>th</sup> April  
(Under 11's 6pm – 7pm / Under 13's & 15's 7pm – 8pm)
- Ladies: Tuesday 23<sup>rd</sup> April 6.30-8pm
- Girls only (Y5-Y8) Tuesday 23<sup>rd</sup> April 6-7pm
- Minis (Rec-Y3) Friday 17<sup>th</sup> May 6-7pm.

If you are interested in playing cricket or want to find out more about the Club please contact [secretary@oakmerecc.co.uk](mailto:secretary@oakmerecc.co.uk) for more details or visit our website at [www.oakmerecc.co.uk](http://www.oakmerecc.co.uk)

Location: Overdale Lane, Oakmere, Northwich CW8 2EL



## EMMA WILSON FITNESS

local health, nutrition & fitness coach  
**FITNESS FOR YOUR FUTURE**  
get motivated.  
have fun.  
get fit.

**MONTHLY ONLINE NUTRITION PROGRAM**  
helping you with weight management, fat loss management. Simple, no nonsense, real food, no gimmicks.

**CLEAN & LEAN**  
a healthy choice  
eat what you love  
eat what's right

**METAFIT**  
Metafit is a HIT  
interval workout  
done in 10 sessions.



**KETTLEBELL**  
Kettlebell your way  
to fitness and liberate  
the fat.



**PURESTRETCH**  
Total body workout  
using a combination  
of exercises.



**PURESTRETCH**  
PureStretch a fusion  
of pilates and yoga.  
Lengthen &  
strengthen your  
entire body along  
with core stability.



**THE BEST WAY**  
The best way to  
get back in  
shape after  
your new arrival.



**ADAPTIVE**  
A more gentle  
approach to exercise  
but still working  
the whole body  
adapting exercises  
where needed.



## CLEAN & LEAN - THE HEALTHY CHOICE

If you still haven't pushed 2018 into the past, it's time to start focusing on the way ahead. The Winter germs are still doing the rounds and looking after your health has never been so important.

This no nonsense, simple approach to eating, means you can enjoy real food, consume good healthy fats, which are vital for good brain function, bone health and physical wellbeing and learn which foods to choose for YOUR life, giving you the best chance to THRIVE.

Removing all the confusion about what's healthy and what's not, giving you:

- More energy, no slumps, balanced blood sugars.
- Less bloat, improved IBS symptoms, better sleep and less cravings.
- All this and you can shed body fat!

No need to get to a class or group, it's all online in a private group. You receive full support from me, recipes, weekly guidelines and home workout videos. Fresh outlook, fresh food, fresh start for your health and wellbeing.

I'm here to help you!

Emma





Farm Shops | Butchery | Delicatessen | Coffee Shops | Restaurant | Hotels



THE HOLLIES FARM SHOP

#growingsince1959

CELEBRATING



THE HOLLIES FARM SHOP  
2019



The Hollies Farm Shop, Forest Road, Little Budworth, Tarporley, CW6 9ES | 01829 760 414  
[info@theholliesfarmshop.co.uk](mailto:info@theholliesfarmshop.co.uk) | [theholliesfarmshop.co.uk](http://theholliesfarmshop.co.uk)

# LETTER FROM THE RECTOR

Dear Friends

Thank you to everyone who supported the Christmas services we had a bumper congregation for our Village Carol Service and it was almost standing room only for Christingle. A big thank you to Lee at Delamere Stores for once more providing the oranges for the service; this enabled us to send all the money collected to support the work of the Children's Society.

This is my last letter as Rector of Delamere. Brian and I will be moving from the village over the summer and our last Sunday will be Pentecost on 9<sup>th</sup> June. It has been a most amazing seven years, from the very beginning you welcomed us and immediately made us feel part of village life here.

I looked back at my first letter actually written before we moved in to The Rectory. This is an extract:

'A day or two ago Robin telephoned me to ask if I would write a piece for the next Newsletter...

So here I am a blank sheet of paper what shall I write about – I thought I might do a piece on 'The State of the Global Economy with Particular Reference to the Ongoing Difficulties in the Euro Zone', or maybe 'The Perceived Disparity Between the UK Extradition Treaty with America Compared to That With Other Countries'. However, I thought I might leave those for another time and I turned to my late mother's scrapbook. (Delamere & Oakmere News March 2012, *Robin Ackerley Editor*.

I have no idea what the difficulties were in the Euro Zone, although this does remind us that nothing changes and who among us thought in 2012 that Donald Trump would ever be the US President. One thing that I do still have is my mother's scrapbook.

This time, next to a recipe for Austrian Coffee Ring which sounds delicious I found this:

'When we weave the weak strands  
of our lives together  
we make a rope of great strength.'

We have woven the strands of our lives together, we have shared hopes and fears and expectations. We have journeyed together we have been strong; but now the time has come for our ways to separate. In that first letter I went on to quote from M L Haskins' poem 'I said to the man that stood at the gate of the year give me a light that I may tread safely into the unknown.' And as then, when we put our hand into the hand of God no matter what the future holds God promises to be with us, to be our light, our guide, our strength.

May God richly bless you in all that you do, now and in the years to come.

I look forward to welcoming you to St Peter's over Easter and do contact me by telephone or email if you would like me to visit or pray for you.

Brian joins me in sending you good wishes.

With all good wishes

Revd Elaine

## *St. Peter's Notice Board*

**From the Registers - November 2018 to February 2019**

### **We welcomed by Baptism**

November: Charlie Eric Peter Corker son of Leon and Lorna

### **We said Farewell to**

November: Gerald Wooley

### **Special Lent & Easter Services (DV)**

Compline (Night Prayer)	Each Thursday during Lent at 7pm	
Mothering Sunday	31st March at 10.30am	A service for all the family Posies for the ladies
Palm Sunday	14th April at 6.30pm	A service of choral evensong
Maundy Thursday	18th April at 7pm	Holy Communion
Good Friday	19th April at 10.30am	Morning Worship followed by coffee and Hot Cross Buns at The Rectory.
Easter Day	21st April at 10.30am	Family Holy Communion – Easter Egg Hunt from 10am

For those who like to plan ahead! Easter Day in 2020 is 12<sup>th</sup> April. (DV)

### **Dates for your Diary (DV)**

'Thy Kingdom Come'	Tuesday 4th June from 10am to 12 noon St Peter's will be open for prayer.
St Peter's Summer Fair	Saturday 6th July at Delamere Community Centre.
Ride & Stride	Saturday 14th September St Peter's will be open for visitors.
Harvest	Sunday 29th September



## FAREWELL AND THANK YOU *from St. Peter's congregation*

This May will mark the seventh anniversary of the start of Rev. Elaine's ministry here in Delamere. During this time she has not only guided us spiritually, visited the sick, comforted the bereaved and helped with problems, but has been an asset to the village, becoming involved in the community as a whole. She also guided us through our bicentenary celebrations. Brian has been a great support to Elaine in her work and he, too, has been involved in the community and at church he has had the thankless task of keeping our ancient boiler ticking along, sometimes having to do emergency transplants!

Unfortunately for us, Rev. Elaine has announced her retirement and her last service will be on 9<sup>th</sup> June. We will miss her commitment, care and friendship, but we wish both her and Brian a long and happy retirement. It has been a privilege to have had them both with us in this parish and we hope they will enjoy the last few months of their ministry here.

### *What happens next*

When a priest leaves a parish the living becomes 'in vacancy' and the churchwardens take over responsibility for the parish. The Sunday services will continue largely unchanged, with local retired clergy and local lay readers coming to lead the services.

The Summer Fair and the special services planned for the Autumn will all take place, and the warm welcome that is a characteristic of St Peter's worship will still be there; the wardens are relying on the villagers to continue to support their local church.

The Bishop will appoint one of the Diocesan senior clergy (either Bishop Keith or Archdeacon Mike Gilbertson) who will meet with the churchwardens and the process of appointment will commence. The Patron of the parish, which in Delamere's case is The Crown (the only Crown parish in the Diocese), is also consulted. Several other parishes locally are currently in vacancy (Alvanley & Manley; Kingsley, Norley & Crowton; Sandiway; and Kelsall) but the wardens are confident that an appointment for St Peter's will be made.

In the meantime the churchwardens will continue to care pastorally for Delamere Church of England Primary Academy, (at the recent Statutory Inspection of Anglican and Methodist Schools the school was rated as Excellent), and the services of Collective Worship held in church and Messy Church held in school will all continue.

St Peter's will remain as a vibrant, vital hub within the local community, a place of welcome, friendship, support and encouragement.

Pat Tyson-Jones  
Churchwarden

## OAKMERE METHODIST CHURCH

In the main church at 10.45am every Sunday morning for a service led by a Methodist Local Preacher or Minister. One service a month includes the sacrament of Holy Communion, led by a Minister (Presbyter).

Contacts: Ann or Eric Wright (01829 732950) or Rev Andrew Emison (01928 733180).

## David Hodkinson Landscaping and Garden Maintenance Service

from small jobs to large

25 years' experience in the garden industry (formerly Acton Bridge Garden Centre Proprietor)

please call Dave on  
07791414919 / 01606 624364

email:  
gentlemengardeners@gmail.com



01606 882 219

*Motorcycles, Scooters, Trykes, Quads  
Cars, Vans and Three Wheel Cars*

*MOTs, Tyres, Servicing, Repairs, Air  
Conditioning, Diagnostics*

*Collection from local area*

### **Opening Hours:**

8.30 am – 5.30 pm Monday to Friday  
8.00 am – 1.00 pm Saturday (MOTs only)

**Tel:** 01606 882219

**Fax:** 01606 881700

Email: [spanns.garage@zen.co.uk](mailto:spanns.garage@zen.co.uk)  
[www.spannsgarage.co.uk](http://www.spannsgarage.co.uk)

**Dalefords Lane  
Whitegate  
CW8 2BW**

## ForestNet IT Service

Station Rd, Delamere

**Your Local Computer Support Service for  
the Home/HomeOffice/Small Business**

**PCs Laptops Tablets**

**Printers Routers Servers**

**Troubleshooting/Problem Solving/Upgrades**

**Software Installs/Upgrades**

**Anti-virus/Malware issues**

**Home/Office Networking**

**Router/WiFi issues**

**Broadband Security Controls**

**30 Years ICT experience  
Courteous Professional Service**

**Competitive Rates Fixed Price No Fix No Fee**

**Email:** [enquiries@forestnet.co.uk](mailto:enquiries@forestnet.co.uk)

**Tel:** 07856 222415

**Web:** [www.forestnet.co.uk](http://www.forestnet.co.uk)



# FORRESTER'S

Telephone: 01928 789217

Mill Lane, Kingsley, Cheshire

Post Code: WA6 8HY

OPEN TO THE PUBLIC 7 DAYS A WEEK



hello  
spring



## ***Cooked, Coated & Raw Chicken Products***

***Including: Chicken Fillets, Chicken Goujons, Chicken Nuggets, Chicken Drumsticks & Thighs, Stuffed Chicken Fillets, Ready Meals - all at wholesale prices!***

*Also available: Bacon, Sausages, Beef, Lamb, Cheese, Eggs, Honey, Darlington's range, Preserves, Biscuits,*

*Cheshire Farm Ice Cream, Cartmel Sticky Toffee Puddings, Cakes and much more....*



**Personalised Hampers & Gifts  
also available!**



**FOLLOW 'FORRESTER'S SHOP' ON FACEBOOK.**

**WE UPDATE THE PAGE WITH**

**SPECIAL OFFERS!**



# STONYFORD COTTAGE

## GARDENS - NURSERY - TEA ROOM

Stonyford Lane, Oakmere, Northwich. Cheshire. CW8 2TF Tel: 01606 888970  
www.stonyfordcottagegardenursery.co.uk Open - Tuesday to Saturday 10am - 5.00pm

NOW OPEN

Garden Tea Room  
Serving Breakfasts, lunches,  
Cream Teas & Cakes

Quality Plants  
at low prices!  
Don't pay  
Garden Centre Prices!

Bring colour to your garden.

Spring plants  
now available

Tulips - Daffodils - Primroses  
Alpines - Perennials - Shrubs

Stoneware - Troughs - Pots - Wind Sculptures

Plant Fairs - Theatre Shows - Charity Events - Please see website for details



Bella Revive

NAILS, MASSAGES  
& BEAUTY THERAPY

Oakmere, Cheshire  
Call 07912 433 956

NAIL TREATMENTS INCLUDING ACRYLIC AND GEL COLOURS  
BEAUTY TREATMENTS & PAMPER PACKAGES

Visit [facebook.com/bellarevive](https://facebook.com/bellarevive) for more details  
or give Ali a call on 07912 433 956



## Yoga Classes

Lauren Gathercole is now giving gentle Rising Moon Yoga classes at the Community Centre, from 10-11am on Mondays. These are suitable for beginners, as well as more experienced practitioners, and you can either book your place by calling Lauren on 07480 279023, look on her facebook page or just turn up! Sessions are only £6 and please bring your own mat if you have one.

## Quiz Night

The next Quiz Night will be held on Friday 5<sup>th</sup> April, with the first question being posed at 7.45. More details can be found elsewhere in the Newsletter and at the Community Centre, or email Steve Lacey.

## 100 Club

The final draw for the 2018-19 100 Club takes place in March, so invitations for the next issue will be going out shortly. The Club is open to all DCA members and an annual subscription of £12 gives you entry into 6 draws made during the year, with 5

monthly prizes of £50, £30 and £20, plus the super draw where the prize money is doubled.

Current players can keep their numbers from this year, but there are several numbers unallocated. A DCA membership only costs £3, so why not have a go? Further details and forms at the Community Centre or from Steve.

## Bookings

The Main Hall is used most evenings during the winter months but is generally available at weekends and during the day – on certain days! Monday and Thursday evenings are available for hire during the summer months.

We also have the smaller Bowling Room and a Meeting Room that can accommodate up to 16 people; both are available for the majority of the week. If you want to book any of the rooms, either on a regular basis or for a one-off event, then please contact Lorraine Roberts, our Booking Secretary, on 01606 889188.

Paul Dean, Chairman, DCA  
Steve Lacey, Treasurer, DCA



*Octogenarians*

Margaret, Maggie, Carol and Thelma all celebrate their 80ths (photo Barry Jones)



# Quiz Night!

Friday 5<sup>th</sup> April

at Delamere Community Centre  
5 Station Road, Delamere CW8 2HU

**Doors open 7.15 - Quiz starts at 7.45**

**Tickets - £4 per person:**

Includes quiz, tea, coffee, squash and nibbles. Bring your own alcoholic drinks and glasses if you prefer – and extra nibbles!

Quiz teams of between 4 and 6 people; if there are not 4 of you please do come along as we will find you a team.

**There are several ways to enter:**

Complete an entry form - they are on the kitchen serving hatch at the Community Centre

Email Steve at [steve@slamonline.co.uk](mailto:steve@slamonline.co.uk)

Phone Steve on 01270 780777

**See you there!!**



To start off our 2019 programme, Cynthia Green gave us an illustrated talk on her travels in Peru. It is a very interesting and beautiful country but I'm not sure about eating guinea pigs! Our book club celebrated its first birthday in January too. We have found the club to be an opportunity to read books that we wouldn't normally read, some we liked, some not so much, but there is always plenty to discuss.

Have you ever tried 'New Age Bowls'? It is great fun and I thoroughly recommend it. The low turnout to our February meeting, due to illness and holidays, didn't make any difference at all to the noise levels as we were laughing, cheering and calling to our team-mates during our games evening. Some members soon got the knack, others need a bit more practice! A rowdy lot in Delamere WI and surprisingly competitive.



The days are getting a bit longer now and hopefully warming up too. It'll be less tempting to stay at home of an evening, so why not come along to our March meeting when David Walker will be showing us some practical and decorative knot tying and in April Eric Hodgson will be explaining the role of a Cheshire magistrate. Who are they,

what do they do and could you be one? Join us to find out. We have lots of other interesting talks planned for the year and we hope you will find one that interests you to tempt you along. You will always be assured of a very warm welcome and, of course, a cup of tea and some cake. It is WI after all!

# Olivia May



*effortless fashion for contemporary women*

Cheshire Showroom - Online - Oxford Boutique

[oliviamay.org](http://oliviamay.org)



Olivia May



@oliviamayltd



@OliviaMayLtd

So, snow arrived in Delamere and Oakmere; despite the impact on travel in the area, I must comment how pretty it makes our community look. There were some comments made about the absence of gritting on some of our quieter roads, so big thanks to Councillor Bell who is organising some grit bins to be delivered to key locations. I hope we can all work together to make sure that the more vulnerable members of the community are made safer on icy pavements next time snow hits.

That being said, Spring is just around the corner; one of my favourite times of the year. Hoping the native daffodils we planted in 2017, and the native bluebells that went in last year will thrive. Please do post any photos you see of them peeping through on the Delamere and Oakmere Facebook page. Spring is also the time for local elections (parish and county councils), so the Annual Parish Meeting on 15<sup>th</sup> April is perhaps more important than ever. Please do come along and let us know what you want our councillors to support in upcoming months. We are very keen to listen.

An example of this is our excellent speed watch team down Station Road. What started as a Facebook comment has progressed to comprehensive traffic reporting, and hopefully (by the time you read this) much improved speed control down Station Road. This also inspired Amy Walsh to put her name forward for co-option to the Council. Welcome Amy, I am sure you will be a really positive member of the team. As an aside, we are still looking for one more councillor to support the Oakmere Ward, and the whole Council will be up for re-election in May (see separate article below). If you

have a little spare time and energy please do consider getting involved.

In terms of other projects:

- We're hoping to get the Frith Field project moving again as the weather warms up. I, for one, certainly wouldn't fancy getting a spade in the ground when it is iced up as it is right now. More on that as soon as possible.
- We've just had some work done on Little Wood to make it safer for all; lovely little spot to stroll round if you haven't already been so head on down to see what we've been up to.
- We're also continuing to find options to improve safety at the Abbey Arms Crossroads, although it does sometimes feel like we are fighting a losing battle there. As ever, please do let me know if you have any new ideas as to how we can ask Highways to improve safety.
- We're also trying to work effectively with Tarmac, Cheshire Police, Cheshire West and Chester, and local residents to find solutions to illegal activities like vandalism down the Oakmere Bridleway and on Stoneyford Lane.

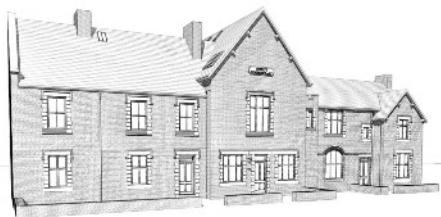
In conclusion, your team at the Parish Council will continue to work hard to respond to local issues and improve our community as best we can. If there are any projects you would like us to consider, please do let us know by emailing Joanne Monks, our clerk, without whom none of this would be possible. Thank you.

John Edwards

Chair, Delamere and Oakmere Parish Council

## ***The Magistrates' Court***

After a long delay that made many of us wonder if the former Magistrates' Court and Police Station on Chester Road would be left to fall down, the



development is now moving apace. The courthouse building has got a new roof, the first of the new houses is almost complete, and, for good or ill, the rest are well underway.

The delay was due in part to objections raised by nearby residents to the height of the new houses. A problem also arose over the route of the access road, but this has now been resolved. The developers expect the whole project to be complete by August, including renovation of the courthouse building.

The historic building was constructed in 1892 as the headquarters of the Cheshire Police Eddisbury Division. It has been disused since 1987.

It was originally hoped to retain some of the features of the building's interior, including the police station cells - which would have become children's bedrooms! However, this has proved to be impracticable, and the whole of the interior will be rebuilt.

Only the exterior will remain, as one of the few historic buildings in the parish.

## ***Earlsbrook***

Construction of the Station Road roundabout for the former Marley Tiles site is expected to begin in May. The first residents are expected to move in towards the end of September.

Lane End, the developers, have given support to the school and to local scouts, and would welcome suggestions for support to other local organisations within 5 miles of the site ([newbeginnings@laneend.org](mailto:newbeginnings@laneend.org)).

## ***Delamere Lake***

The first phase of the holiday lodge development on the former Fourways sand quarry is now close to completion. Following lengthy roadworks on Chester Road the junction at the entrance has been completed, the first ten lodges have been built and the landscaping is well underway.



The first occupants are expected to arrive in the spring or summer.



If this issue of the newsletter is printed and distributed fast enough, you've still got time to put your name forward for election as a parish councillor (or even a Cheshire West and Chester Councillor). The elections take place on 2<sup>nd</sup> May, and nomination papers have to be delivered by 4pm on 3<sup>rd</sup> April.

Unlike central government and the borough council, the parish council steers well clear of party politics. All the members are just ordinary residents of the parish who are prepared to devote some of their time and energy, for free, in the hope of doing something useful for the local community. The Chairman's letters in this and previous issues give an indication of the kind of things they do. If you think they should do more, or do things differently - get yourself nominated!

Even if you are reasonably happy with what the parish council does, but would like to devote some of your own time and effort to it, think about getting nominated. You wouldn't necessarily be competing against previous councillors. As noted by the Chairman in his letter above, there is already one vacancy, and if any of the current members decide not to seek re-election there will be more.

Between elections, which take place every four years, the parish council can co-opt new members to replace any who leave. When the four years are up the whole council is disbanded and a new one is elected. If no new candidates come forward the new one will be the same as the old one with no

fresh faces. If you think you've got something to offer, have a go at it.

As a minimum councillors are expected to attend monthly parish council meetings and contribute to whatever decisions are made on behalf of the local community. Beyond that it is up to the individual councillor, depending on how much time they can spare, how much energy they have got, and how keen they are to achieve some particular goal for the local community. Hardly a week goes by without one of them taking up an issue raised by particular residents, such as getting a pothole mended, getting a leaking sewer fixed, or having a quiet word with residents who have annoyed their neighbours.

One of the most common decisions parish councils have to make is whether to support or oppose a planning application. They have no direct power over these, but can make sure that those responsible are aware of local issues and concerns, and can sometimes be quite influential. Most council meetings are attended by at least one of our CW&C ward councillors, giving parish councillors the opportunity to discuss the issues with them face-to-face. The same applies to officials responsible for highways and other local matters, who also attend council meetings regularly.

Other key decisions include defining and managing any services provided by the parish council itself, and collecting the necessary money through the council tax (the 'precept'). Such services can include providing allotments, car parks, community

transport schemes, community safety and crime reduction measures, events and festivals, leisure and sports facilities, public toilets, street cleaning, traffic calming measures, village greens and youth projects. The Frith Avenue project is an example of this, but on the whole Delamere and Oakmere have provided relatively few such services, and have kept the precept well below the national average. The council could do more, and charge more, if a clear need were identified.

Information on standing for election can be downloaded from the Electoral Commission at:

[electoralcommission.org.uk/i-am-a/candidate-or-agent/parish-and-community-council-elections-in-england-and-wales](http://electoralcommission.org.uk/i-am-a/candidate-or-agent/parish-and-community-council-elections-in-england-and-wales)

Nominees must be at least 18 by April 9th and be a British citizen, a Commonwealth citizen, or a citizen of another EU country. They must either: be registered as an elector for the parish; or have lived in the parish or within 3 miles of it for a year; or have worked in the parish for a year; or have occupied land or premises in the parish for a year.

Nomination papers can be obtained from [yourvotematters.co.uk](http://yourvotematters.co.uk) or the Electoral Commission website.

### *Attention all dog walkers!*

We included this imaginative picture in 2014, along with encouragement for dog walkers to clean up after their pets. The problem has reared its head again.

We know from the amount of bagged waste that accumulates in litter bins that most dog owners in the parish dispose of their pets' waste properly. However, not all do. If you haven't always been as conscientious as you should be, please remember that other people walk where you do. It can be very unpleasant when deposits are left on paths, or when bags of waste are left lying around - or hanging from a tree. **Please bag it and bin it!**



Reading the recent articles on wasps and living at the southwest corner of Delamere Forest, I was alarmed to see hornets on my compost heap. When disturbed they made a beeline for the forest so I assume they had a nest there. I presume it must be global warming and the long hot summer that's allowed them up from the West Country which is where I thought they tend to be. Are they now a regular feature of the local fauna? Can they be controlled in the same way as wasps? Do they perish in the winter apart from the queens like other wasps?



European hornet © Bob Foreman, [sussexwildlifetrust.org.uk](http://sussexwildlifetrust.org.uk)

## WILDLIFE IN THE PARISH

*By David Wright*

This year there seems to be a shortage of winter finches. The migratory Brambling has visited the feeders at Organsdale in good numbers but Siskin and Lesser Redpoll have only been single birds. This may be due to the mild weather.

Winter thrushes can be seen out feeding on the fields. Redwing and Fieldfare fly here in great numbers to over winter.



Red kite [www.rspb.org.uk](http://www.rspb.org.uk)

A Red Kite was seen at Plovers Moss / Hogshead Lane area in November, but did not stay very long, considering our well wooded countryside and open areas where Kites could hunt and forage for carrion. It seems odd that these spectacular birds are absent.

Colin Howarth, from Eddisbury Fruit Farm was surprised to see Hornets on his compost heap last summer. The UK has one native hornet, the European Hornet, which is active from May to November.

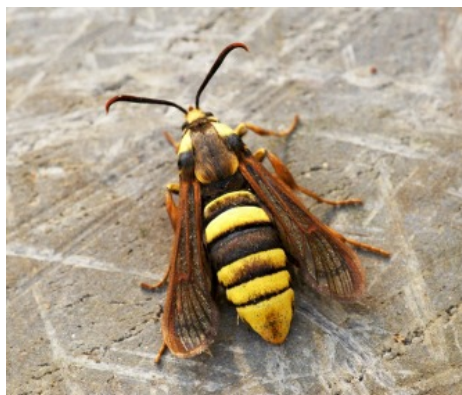
Once only common to central southern England, in the last 20 years it has spread as far north as Yorkshire. It is a creature of lowland wooded habitat and has benefitted from urban gardens, and ornamental wooden structures in which to breed. Global warming will help the Hornet to expand its range. It preys on other insects such as beetles, wasps, moths,

butterflies and even small dragonflies. It will also feed on fallen fruit and other sources of sugary foods, so Colin is in the ideal place to observe these insects.

As with bees and wasps all the insects die off in winter and only the mated queens and new queens survive over winter, to nest in spring and it is doubtful any would survive a hard winter in the north of England.

The Asian Hornet has been seen in southern England since 2016. It is smaller than the European Hornet and appears a lot darker, lacking the yellow markings on the thorax. It is a predator of many pollinating insects, including Honey Bees, where it can cause considerable damage to hives. Sightings of this hornet must be reported to DEFRA (Department of Environment, Food and Rural Affairs) National Bee Unit, who are trying to combat the spread of this species of hornet. For more information on identification and the hornets complex life cycle, visit the Wildlife Trust Know Your Hornets website or the Bees, Wasps and Ants Recording Society.

There are three insects (the Hornet Moth, the Lunar Hornet Moth and the Hornet Mimic Hoverfly) that mimic hornets to give the impression of danger “stay away,” whilst in fact all three are completely harmless.



*Hornet Moth*

© Ben Sole, [www.wildlifetrusts.org](http://www.wildlifetrusts.org)

Unless bees, wasps and hornets are causing a problem, it is best to leave them alone. They are part of our natural environment.

## MORE WILDLIFE



Cynthia and Barry Green spotted this Sparrowhawk sitting on their yew hedge.



# THE OLD ROMAN ROAD THROUGH DELAMERE *Don Wilson*

It is common knowledge that there is an old Roman Road, known as Watling Street passing through Delamere and Oakmere. In fact until the mid 18<sup>th</sup> century, this route had been the main trunk road from Chester to Manchester and beyond for over 1500 years (equivalent to the M56 of today). For all of this time, our area was very sparsely populated. To the East, the landscape was of bogs, meres, thickets of brambles with stunted oaks and birch, and to the West the marshes of the Goway towards Chester.

The old maps show the road passing through what is now Morreys into Nettleford Wood, with a secondary road branching off towards Middlewich for the transport of salt. The main road continued onwards towards Eddisbury Hill, skirting the old fort, crossing what is now Station Road at the foot of Eddisbury Hill, heading Eastwards by Thieves Moss and onwards by the current sand quarry before rejoining the A556 at the edge of the parish.

So for hundreds of years, thousands would have passed through Delamere along our Watling Street, the Roman

Legions, medieval merchants, monks, nobles, horsemen and peasants, would have all passed this way. It would have been a relief, after passing the damp lands of Oakmere with its bogs and meres to reach the heights of Eddisbury and see distant Chester and the Welsh mountains for the first time.

In Medieval times, our road was already around 1000 years old, and was of considerable importance for the transportation of timber and stone for construction of bridges and the new Vale Royal Abbey. Efforts must have been made to ensure the road was in good condition. Accounts made during the Abbeys construction shows stone brought from Eddisbury was by one horse carts, some often making two return trips per day, totalling not far off 30 miles. This was undertaken often a month at a time, even during the Winter, which would have been impossible for such heavy loads, unless the route was in a good state of repair.

Pedlars and small traders often used our old roads for their trade. They would purchase items in one place and sell them on farther on. Not far from our



Delamere Stores, in the woods at Thieves Moss, on the site of the old road, the old maps show “Pedlars Oak”, perhaps a long forgotten old oak, gaining its name from such activities.

For hundreds of years, Delamere was the haunt of criminals and robbers, the area being lawless and dangerous for the lone traveller. During the coaching era highway men were common, and you passed through Delamere alone at your peril. It is said the robbers would “entertain” potential victims in the taverns in Chester, promising to protect them as they passed through Delamere. Once here, the robbers would attack their victims, making off with their booty, their victims lucky to escape with their lives. It is more than likely that Thieves Moss gained its name from those times.

In the mid 18<sup>th</sup> century the Turnpike Trust was established to improve the country’s road network. Until then, roads were the responsibility of the parishes through which they passed, so for sparsely populated areas such as Delamere, this was a difficult task, and consequently roads were of very poor condition and in a state of disrepair. The Trust discontinued our old Roman Road, and established a new route nearby, now the current A556. Consequently by the mid 19<sup>th</sup> century, the old route fell into disuse, and with clearance of a lot of the forest, the raised banks were lowered and side ditches filled in.

What remains of our Roman Road? Surprisingly, quite a lot.

In Nettleford Wood there is distinct evidence of the junction of the Roman Road to Middlewich with Watling Street. Outside the woods looking eastwards there is a small outcrop of sandstone,

clearly cut away to allow room for the road. Father on, not far from Stoney Lane, there is a stand of old pines by the footpath, with a distinct dip between them, showing the path of the road, sadly now partly filled in with rubbish. Farther on at the junction of Eddisbury Hill with Station Road, in the field opposite, there is evidence, when the field has been ploughed, of a distinct different soil colour where the road was situated. The course of the road across the field is shown clearly in this LIDAR image (courtesy Cheshire West and Chester Council).



Finally, on the Eastern side of Thieves Moss, the road is very distinct with its raised banks as it heads eastwards. Sadly this is under threat from the encroaching sand quarry.



In January Tarmac began to hand over part of their Crown Farm Quarry site to Cheshire Wildlife Trust, marked by the presenting of keys to a vehicle funded by Tarmac.

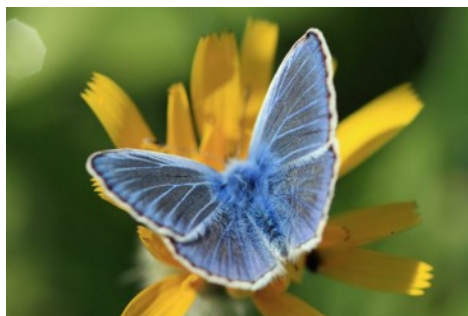


The site will be transformed into a new 17-hectare wildlife haven known as Crown Farm Nature Reserve. The reserve will be managed by the Trust to provide homes for wildflowers, solitary bees, grassland butterflies and birds, as well as a venue to inspire the next generation about the value of nature.

While the quarry remains in operation the reserve will not be open to the public, but good views across it can be seen from the Oakmere Way. The Trust will also be holding special visits for supporters and delivering education sessions for schools in a new Discovery Centre funded by Tarmac. Forest school groups are due to start using the centre and the reserve in the spring, and a number of guided events are planned which will be publicised in the Trust's events guide ([www.cheshirewildlifetrust.org.uk/events](http://www.cheshirewildlifetrust.org.uk/events)).

As part of Tarmac's planning permission to extract sand from the quarry they were required to have a plan for how the site was to be

restored, and to include a variety of wildlife habitats once extraction finished (see issue 41). Kevin Feeney, the Trust's Living Landscapes Officer and the nature reserve manager, reports that butterflies like the small heath, the common blue and small coppers have already started to move back into the area.



*Common Blue butterfly*

Sand martins are a common sight too, nesting in the sand banks within in the quarry. They can be expected to remain while quarrying continues, and in order to provide a suitable habitat for them when it stops, the Trust are looking into the possibility of creating artificial sand martin banks. This could be a long term solution if the initial cost can be found.



A visit to a nature reserve can be a different experience for everyone, whether that's a dog walk, a chance for some fresh air or perhaps even a run.

For a volunteer wildlife recorder, it can help focus the practical management of our nature reserves. Cheshire Wildlife Trust has a number of volunteers who dedicate their own time to explore our nature reserves through the spring and summers months, gathering valuable data on species such as dragonflies and butterflies.

Hatchmere is one such nature reserve where species recording is helping to direct the management of the site. This site of special scientific interest (SSSI) sits on the border of Delamere Forest, populated with naturally regenerated oak and birch woodland, with diverse areas of wet heathland and fen. It is home to many associated insects and birds.



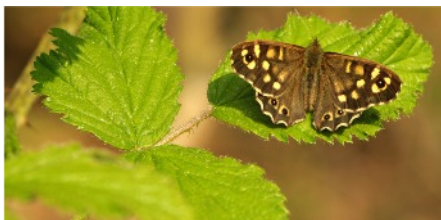
Butterflies and moths emerge from caterpillars, their larval form having a very specific food plant. For example, the Brimstone butterfly preferring the Alder Buckthorn and Green Hairstreak feeding almost solely on Bilberry. Diverse yet stable habitats offer a lasting refuge for larval development.

A total of **187** butterflies were counted during the 2018 surveys of the Hatchmere Butterfly Transect. The

majority of which were **Green-veined Whites**, **Brimstones**, **Speckled Woods** and **Orange Tips**.



This data was gathered over a 28-week period during the emergence season. The information tells us that the priority habitats for these species are damp marsh, woodland clearings and areas of dense woody scrub. A change in these habitats will reflect in future butterfly counts, with weather



always being an external factor.

Data collected over many years offers better evidence as habitats develop very slowly over time. Having data from a range of species offers better understanding of a nature reserve and allows better planning for future management.

For more information about our Hatchmere reserve visit:

<https://www.cheshirewildlifetrust.org.uk/nature-reserves/hatchmere>





Sxy & Fabulous  
SKIN & BEAUTY SPA



HIFU  
FAT FREEZING

Announcing our new  
innovative treatments:

**HIFU** is the latest  
powerful face & body  
combination for skin **lifting**  
& **targeted fat reduction**  
using the most up-to-date,  
clinically proven HIFU  
technology to treat both  
face & body concerns.

Located in Ashton Hayes,  
near Frodsham in Cheshire.  
All our laser and skin  
care treatments are  
provided by highly qualified  
professionals with excellent  
experience in the field.

[www.sxyfabulous.co.uk](http://www.sxyfabulous.co.uk)

01829 759332

# Treatments

## Beauty & Spa Treatments

Facials  
Luxury Manicure &  
Pedicure Treatments  
Gel polish  
Nail Extensions  
Waxing  
Brow & Lash Treatments  
Lash Extensions  
LVL Lash Lift  
Semi-Permanent Makeup  
Full Body Massage  
Body exfoliation  
Treatments  
St Tropez spray Tanning

## Aesthetic Procedures

Botox  
Facial Fillers  
Lip Fillers

## Advanced Body & Facial Treatments

Skin Peels for Anti-aging  
& Acne  
Microdermabrasion  
LED Light Therapy  
Skin Tightening & Lifting  
Laser Hair Removal  
Thread Vein Treatments  
Rosacea Treatments  
Pigmentation Treatments  
Acne Treatments  
Double Chin Treatments  
Non-Surgical Fat Removal  
(3D Fat Freeze)  
Cellulite Treatments  
HIFU Face & Body  
Treatments

3d - chin freeze



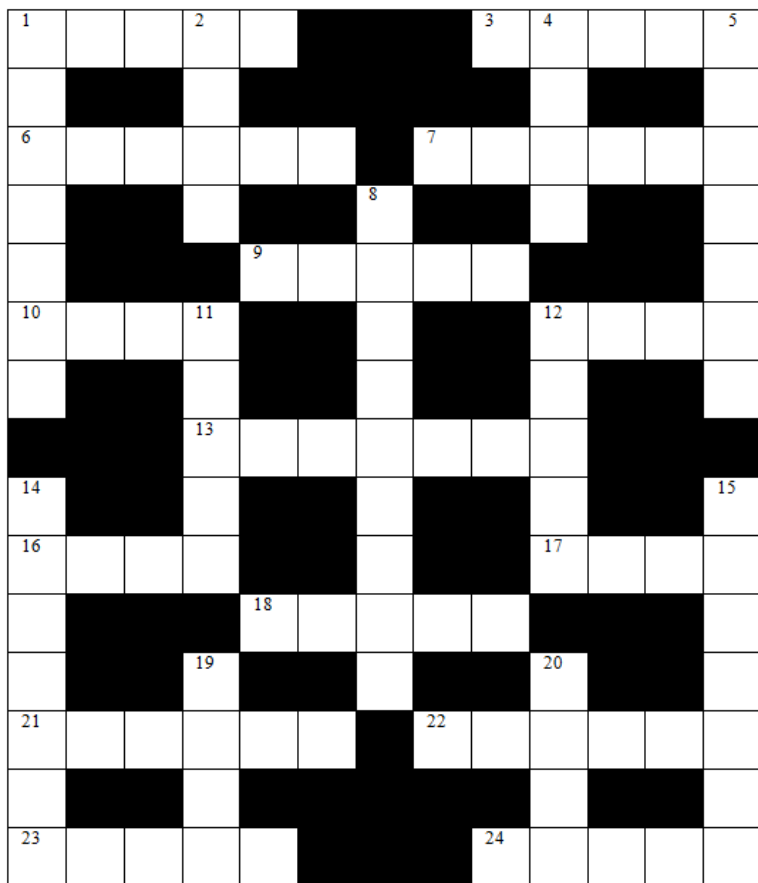
**Sxy & Fabulous**  
SKIN & BEAUTY SPA



3 The Barns, Lane End Farm, Ashton Hayes, Cheshire CH3 8BH

Call us now to  
book an appointment  
**01829 759332**

[www.sxyfabulous.co.uk](http://www.sxyfabulous.co.uk)



## Across:

1. Poet/playwright returns toile (5)
3. Note neck frill on deep voiced Billy (5)
6. Racial moral system includes north (6)
7. Soldier, leave, see! Lady's man (6)
9. Quiet ring, all right? Vibrated(5)
10. Small facial feature error (4)
12. Action whichever way you look at it (4)
13. Contains cutlery or people eating! (7)
16. Don't give one of these, just throw (4)
17. Sweeper loses book space (4)
18. Keep down underneath (5)
21. Salty character concocts rat pie (6)
22. Father back in Northern Ireland makes Italian rolls (6)
23. Led back, greeting Asian capital (5)
24. Humble a noisy singer with low voice (5)

### Down:

1. First lady support for mountain (7)
2. Admits nothing on 3 directions (4)
4. Sails etc. on a northern capital (4)
5. Flowery US state (7)
8. "Tories play snooker on this, officer" (9)
11. Wolves get ready before heading south (5)
12. He gives money to sort out new door (5)
14. Cricketer puzzled out (7)
15. Fancy in image? (7)
19. Potato dish from Korean War programme (4)
20. Rebuff – buns returned (4)

## QUIZ - 10 QUESTIONS RELATED TO THE WEATHER

by Steve Lacey

(Answers on page 5)

1. How many points and sides do most snowflakes have?
2. What is the difference between mist and fog?
3. Who had a hit single in the early 80s with 'It's Raining Men'?
4. What describes a 7 on the Beaufort Scale?
5. Tradition says that if it rains on St Swithin's Day it will rain for the next how many days? And what date is St Swithin's Day?
6. What name will the eighth storm of 2018/19 be given by the Met Office?
7. How do we better know a Galanthus?
8. What does an anemometer measure?
9. Who starred in the 1976 film, the Sunshine Boys?
10. Who was the BBC North West weather lady who sadly passed away earlier this year?

***If you enjoyed this little quiz, why not join us at the Community Centre on Friday 5<sup>th</sup> April for more of the same, or at least similar! More details elsewhere in the Newsletter or at the Centre.***



The logo for J&S, featuring the letters 'J&S' in a bold, blue, stylized font with a yellow swoosh underneath.

MOTORCYCLE CLOTHING & ACCESSORIES

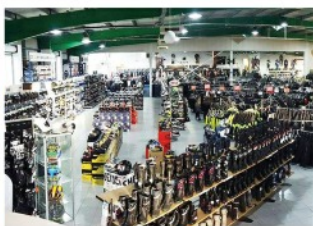
OAKMERE  
MEGASTORE  
NEAR YOU!

32,000 SQ FT OF MOTORCYCLE CLOTHING & ACCESSORIES

**COME AND VISIT US AT J&S OAKMERE**  
AND TRY OUT THE FOURWAYS CAFE AND GRILL TODAY!

RJH MOTORBIKE TRAINING SCHOOL ARE ON SITE

EVERYTHING YOU NEED IS HERE



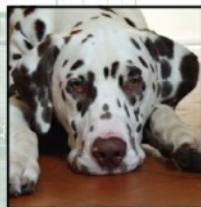
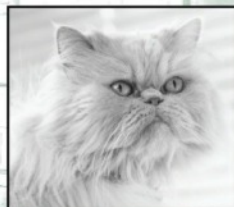
**SIGN UP TO OUR WEEKLY NEWSLETTER TO WIN GREAT PRIZES!**

Sign up to our newsletter to receive automatic entry in to the #JSFREEBIEFRIDAY prize draw every week.  
Just go to [www.jsaccessories.co.uk](http://www.jsaccessories.co.uk) and click on "sign up to newsletter" at the bottom of our home page.

# **Hollybank** VETERINARY CENTRE



- ♦ *Independent small animal veterinary hospital*
- ♦ *Caring for pets and their owners*
- ♦ *24hr emergency service on site*
- ♦ *Exceptionally high standards of care, hygiene, facilities and equipment*
- ♦ *Professional, friendly, welcoming & kind*
- ♦ *Part of the local community*



**584 Chester Road | Sandiway | Cheshire | CW8 2DX**

**Tel: 01606 880890 | [www.hollybankvets.co.uk](http://www.hollybankvets.co.uk)**





DELAMERE  
& OAKMERE

# NEWS

ISSUE 45 | SPRING 2019

Cover Photo by *Bridget Austin*:  
A spring scene at Linmere