

Delamere and Oakmere News

Number 15

Oct/Nov 2007



The Switchback in October

DELAMERE POST OFFICE SHOCK

The war on village life continues. Having just recovered from the threat to the school we find we are now being threatened with the loss of our post office. Closure of the post office would almost certainly mean loss of the village store as well, as one can hardly survive without the other.

The news was announced on 6th November, following which there is to be a six-week "consultation" period, which takes us to 18th December. It is unlikely, though, that any of the people consulted will be those most affected by the loss and even less likely that their views will be listened to.

Presumably Delamere has been targeted because it is one of many branches that does not make the Post Office enough money, largely of course because so much of what they used to carry out has been taken away from them. Gone are the days when public bodies performed a service. Today money, rather than people's welfare, is what counts.

How will regular users of the post office in Delamere and Oakmere be affected?

The nearest post offices are: Kelsall 3 miles, Sandiway 3.1 miles and Cuddington 3.5 miles (the last two are less than a mile apart!). It is possible that an "outreach" post office will come to Delamere for two half days a week, for which I suppose we are meant to be humbly grateful. More details in the December/January issue.

**What's On
Oct/Nov**

*All events in Delamere
Community Centre, unless
indicated.*

*All club/society secretaries
Please let me know well in
advance the dates of your
meetings for the following two
months (ie by 16th Nov for
Dec/Jan, etc. (if you would like
them included in this diary).*

*Contact me on either:
01829 752723, or by e-mail:
robin.ackerley@btinternet.com
or at: The Paddock, Stoney
Lane, Delamere*, Tarporeley
CW6 0SX*

*(*not Kelsall)*

Sunday, 11th Nov.
**Remembrance Day
Service**
Delamere Church
10.45am
and at
Oakmere Methodist
Church
6.30pm
[see page 11]

Mon., 12th Nov.
**Delamere Community
Association
Committee Meeting**
7.15pm

Tues., 13th Nov.
**Women's Institute
Annual General
Meeting**
7.30pm

Wed., 14th Nov.
Golden Age
Shopping Trip to the
Lowry Outlet Centre
£6
Coach leaves Community Centre at
10.30 am & leaves Centre at
3.30pm
[The Lowry Centre is on Salford
Quays near the Imperial War
Museum & Lowry Theatre]
Contact Jim Emerton on 01270
668934 for details.

Mon., 19th Nov.
**Delamere Parish
Council**
Delamere School
7.30pm

Sun., 25th Nov.
Sunday School
Delamere Church
Parish Room
10.30am

Mon., 26th Nov.
**Oakmere Parish
Council**
Community Centre
7.00pm

Wed., 28th Nov.
Golden Age
Delamere Derby
All Welcome
2.00pm

Tues., 11th Dec.
**Women's Institute
Christmas Party**
Table Decoration Competition
7.30pm

Wed., 12th Dec.
**Golden Age
Christmas Lunch**
Members only

Dirty Doggies
A reader living in
Oakmere has complained at
the amount of dog dirt left
lying on public footpaths in
the area. If you are a dog
owner, please see that
anything your little pet
deposits is taken away with
you.

Strange but True...
Now available from
Tesco:

Huntley & Palmer's
**CAPTAIN SCOTT'S
EXPEDITION BISCUITS**

Suitable for freezing?

Delamere Primary
School

**MUMS' AND
TODDLERS'
CLUB**

Come and have FUN!
Every Monday 1 till 3pm
£1 entry including
refreshments
Stoney Lane, Delamere, CW6 0ST
01829 751450

Car Thefts

Two cars were broken into
in the Forest Car Park on
27th October. A laptop was
taken from one of them.
There are thieves about.
Make sure your car is
locked!

Theft of Lead and Copper
Vale Royal Home Watch has
reported an increase in the theft of
lead and copper from roofs –
particularly from churches and
schools. Even inspection grid
covers have been disappearing. All
this is due to the rise in the cost of
metals.

If you see anything suspicious,
ring 0845 4580000.

Barn Dance

The Barn Dance held at the
Community Centre on 5th
October in aid of Romanian
charity Network Gloria took
£470. After expenses for the
band and hall, £230 was
donated to the charity. One of
the charity's trustees has gone
out to Romania to assess the
present needs of the families.

Many thanks to all those
who supported the event.

The next Barn Dance will be
held in the spring.

For further details of the
work the charity does see our
website:
www.networkgloria.org.uk

Imperial v Metric

It is the policy of this
Newsletter to refer only to
imperial weights and
measures.

R.

**THE
FOURWAYS
INN**

at Delamere

CONFERENCE CENTRE * BANQUET CATERING * RESTAURANT * PUB

CALL IN AND SEE THE CHANGES

**SUNDAY LUNCH £8.95
2-COURSE STARTER AND MAINS**

CURRY NIGHTS EVERY THURSDAY

LUNCHE MONDAY TO SATURDAY ONLY £5 – OVER 15 ITEMS

**BRING THIS ADVERT. IN AND RECEIVE A FREE GLASS OF WINE
WHEN ORDERING A MEAL**

**CHESTER ROAD, DELAMERE, NORTHWICH, CHESHIRE CW8 2HB
TELEPHONE 01606 882126. FAX: 01606 883334
EMAIL: fourways@thefourways.co.uk WEB SITE : www.thefourwaysinn.co.uk**

SWP ELECTRICS LTD

**SOCKET LIGHTS REWIRES
TESTING & INSPECTION
OF PROPERTIES**

NO JOB TOO SMALL. WE DO THEM ALL

PROMPT RELIABLE SERVICE

FREE ESTIMATES

REFERENCES AVAILABLE

**Tel: 01928 740415
Stephen Warburton, Tarvin Road,
Manley, Cheshire WA6 9EW**

**BSI PART P DOMESTIC ELECTRIC INSTALLER
APPROVED**

**OUR REPUTATION
IS AT STEAK!**



**DUTTON'S
Quality Meats**



**4a Church St, Kelsall
Opp. Dr Surgery**

01829 751355



Eddisbury Hill

Eddisbury Hill, with its ancient history, has long been the home of strange stories and unexplained mysteries - from the Iron Age dwellers, whose ramparts can still be seen, to the Romans, whose road passed nearby, to Alfred the Great's daughter, whose castle stood on the site of the hill fort, to the mediaeval Chamber in the Forest and the strange tale of how it came to be abandoned and more recently to the communications towers on Pale Heights and dark rumours about how they have been used for secret surveillance.....

Pale Heights

Big skies,
Images from holidays in wild places.

Views all around - Liverpool's cathedrals, Jodrell Bank,
Jubilee Tower on Moel Famau close to Offa's Dyke.

Our village nestles at the foot of Eddisbury Hill
Given over for many years to farming.

Earliest known inhabitants were people of the Iron Age,
Centred on the hillfort, the ramparts still visible.

Romans destroyed the fort - too close to their road
Which skirts the hill's southern slopes.

The tenth century saw Aethelflaed, Lady of the Mercians,
Holding the line against the Danes in the north.

Another century or two and Normans hunted in Delamere,
Then the Forester's Chamber was cut into the hill's flank.

Later it was taken for farming, creating the Old Pale,
Now host to telecommunication masts and ravens.

The twenty-first century dawned, but not for us
Houses, factories or supermarkets.

We can wander along the ramparts among the gorse bushes
Imagining our predecessors from millennia past.

No more ploughing, just a few cattle and sheep where
needed.
A mosaic of habitats, open now to us all..

Wildflower meadows, trees, a stream, ponds and marshes,
Larks, buzzards, goldfinches - and a big sky.

Kay George.

Ernest Nixon

Ernie Nixon passed away at the end of October. He was ninety-two. Born in 1915 at Fishpool Farm (which he remained at until the mid 1950s), Ernie lived most of his life in Delamere. One of a family of eight he was the last and the youngest of five brothers; one of his three sisters survives him.

He was one of the last of an era and he loved to reminisce about farming in days gone by, of how, along with other local farmers, he would take the milk by horse and cart each morning to Delamere Station from where it was transported by train to Chester or Manchester.

With the outbreak of war in 1939 he joined Delamere Home Guard whose members, armed with pitchforks, prepared for the defence of Delamere.

In the early 1960s, while living in Kingsley, Ernie bought a pony and governess cart. He later went on to buy a shire horse and spent his retirement breeding them.

*Ernie's ninetieth birthday at The Fourways
September 2005*

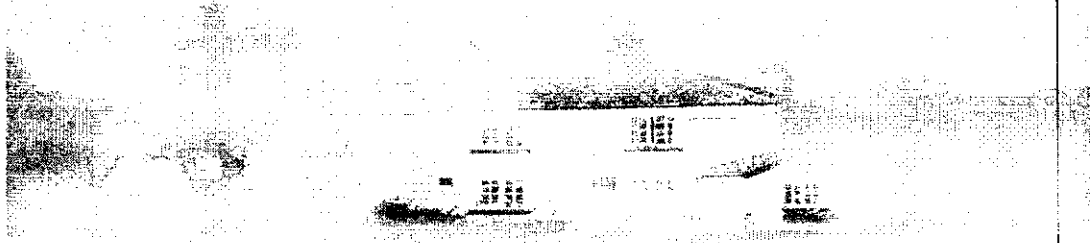


For the last twenty-seven years he was a member of the Shire Horse Society, keeping up an active interest until the end of his life.

In May of this year with their health failing Ernie and his wife Marjorie left Old Pale Cottages and moved to Hollymore House near Sandbach, close to the home of their elder son David.

Ernie and Marjorie had been married for sixty-four years. Our condolences to Marjorie, children Dave, Chris and Doreen, and their families of three children, six grandchildren and nine great-grandchildren.

The Fishpool Inn



Traditional Ales *Garden*

Open: 11.30 – 3.00 & 5.30 – 11.00 Monday to Friday

All Day Saturday & Sunday

Food Served All Day at Weekends.

Senior Citizens Menus Available ~ £5.95

Telephone: 01606 883277

DELAMERE STORES

13 Station Road, Delamere, Northwich, Cheshire CW8 2HU

Tel: 01606 882226



Visit our in-store bakery and choose from a full menu of fresh hand-made sandwiches, which are prepared as you wait.

Come and visit us.

**WE ARE OPEN: 6.30am – 6.00pm Mon. – Thurs.
6.30am – 6.00pm Friday. 6.00am – 6.00pm Saturday.
7.00am - 2.00pm Sunday**

The following article was sent in recently by Barry Barnes of Station Road. The author, a friend of Barry's, having heard about the proposed creation of a viewing point on Pale Heights, is anxious that the historic trig point is not interfered with. The site where it stands is now owned by United Utilities!

The Delamere Meridian

Malcolm McIvor

The 'trig point' at the top of the Old Pale is one of the most significant of all those used in the early map making by the Ordnance Survey. It was constructed initially in around 1840 as part of the triangulation programme that would enable the OS to accurately determine heights and distances of prominent land features and as such it had the status of a 'primary triangulation station'. Following this, a vast series of secondary triangulation points were set up in order that the making of large scale maps could be done with greater precision and these relied on the position of all the primary stations being correct.

The 'trig point' at Delamere became unique to the production of Ordnance Survey map making when in the 1860's it was decided to use the 'meridian' through Delamere Forest as the one on which the 'sheetlines' of all the large scale maps produced by OS would be based.



The Greenwich Meridian very quickly led off into the North Sea and so could only be used with reliability for maps south of the Wash. 3 Degrees West was tried but was not sufficiently central when mapping of Scotland was needed to standardize with that of England & Wales so the Delamere Meridian was chosen, even though its coordinates hardly rolled off the tongue at 53°13'17"274N, 2°41'03"562W, and stayed as the OS map standard meridian until the National Grid system was introduced with the 7th Series of maps in the 1940s.

This makes this structure one of the most historic in the area and every effort should be taken to retain and maintain it.

**WILLINGTON
FRUIT FARM SHOP
NEW SEASON APPLES
ALL HOME-GROWN APPLES**

COX'S ORANGE, BRAMLEY,
HOLSTEIN COX, SPARTAN, ROYAL
GALA, KIDD'S ORANGE, CHIVERS
DELIGHT, RED PIPPIN, GOLDEN
DELICIOUS, BELLE DE BOSKOOP,
CRISPIN & MELROSE.
MAIN CROP APPLES SOLD IN LARGE OR SMALL
QUANTITIES

HOME-PRESSED APPLE JUICE
FREE! ...APPLE TASTERS
TRY BEFORE YOU BUY
ALSO CHESHIRE POTATOES,
& A FULL RANGE OF
FRESH FRUIT & VEG,
SALADS, LOCAL HONEY, CHESHIRE FARM
ICE CREAM, CHESHIRE YOGHURT &
CHEESES, WELSH FARMHOUSE YOGHURT,
FREE RANGE EGGS, JAMS & PRESERVES,
PRE-PACKED CHEESES, TRAY BAKES &
PUMPKINS

**OPEN: 10am - 5.30pm
EVERY DAY**

Signposted to Willington Fruit Farm
CHAPEL LANE, WILLINGTON,
Nr. KELSALL, CHESHIRE

Tel: 01829 751216

www.bigbarn.co.uk/willingtonfarmshop

Wedding Chair Cover Hire



£2.50 per Chair Cover

We also hire Organza Sashes and Bows.
We offer a national Delivery & Collection service
To check availability, and to take advantage of
our free sample service, please contact us

organsdale.linen@yahoo.co.uk

Organsdale Linen

Kelsall, Cheshire

CW6 0SS

Telephone 01829 752782

<http://organsdale-linen.mysite.orange.co.uk>

J.W.Landscapes

Jamie Wright

- ❖ BLOCK PAVING
- ❖ FLAGGING
- ❖ FENCING
- ❖ GATES
- ❖ DECKING
- ❖ TURFING
- ❖ TREE WORK
- ❖ FREE ESTIMATES
- ❖ RELIABLE SERVICE

Little Budworth, Tarporley, Cheshire

Tel: 01829 760223 & 07955 219969

The Telephone Man

Ex BT Engineer

Experienced & Reliable

Installations & Repairs

Office Moves & Changes

**Telephone Extension Sockets
Anywhere Around Your Home**

Please call Ken on

01606 888343

(Oakmere, Cheshire)

THE NORTH-WEST'S FAVOURITE FOR CARAVANS AND OUTDOOR LEISURE

**SET IN OVER 10 ACRES OF
BEAUTIFUL CHESHIRE COUNTRYSIDE!**

- **MASSIVE SHOWROOM - OVER 35 CARAVANS UNDER ONE ROOF!**
- **GREAT CHOICE OF USED CARAVANS FROM ONLY £1995**
- **HUGE LEISURE SUPERSTORE - EVERY OUTDOOR ACCESSORY YOU NEED**
- **OUTDOOR CLOTHING - TOP BRANDS AT THE LOWEST PRICES**
- **1000s OF GIFT IDEAS - GAMES, BOOKS, CARDS & MORE**
- **ROMANY TEAROOM - DELICIOUS HOME-MADE MEALS & BREAKFASTS!**
- **AWARD-WINNING SERVICE DEPARTMENT**
- **AWNING SHOWROOM**



On the A556 Chester Road,
Delamere Forest, Nr. Northwich,
Cheshire CW8 2HB

Open 7 days

The Great Outdoor Experience!

Tel: 01606 882032

Web: www.harringtons-caravans.co.uk

Email: enquiries@harringtons-caravans.co.uk

ROSE CLOCKS

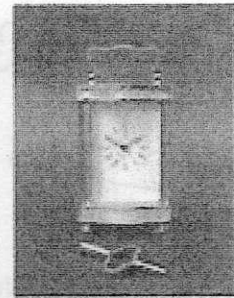
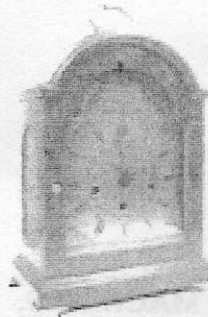
*Always a fine range of
antique and reproduction
clocks for sale.*

Quality clock & barometer
repairs by a
British Horological Institute
award winning horologist
Collection-delivery service

Tel 01829 741747

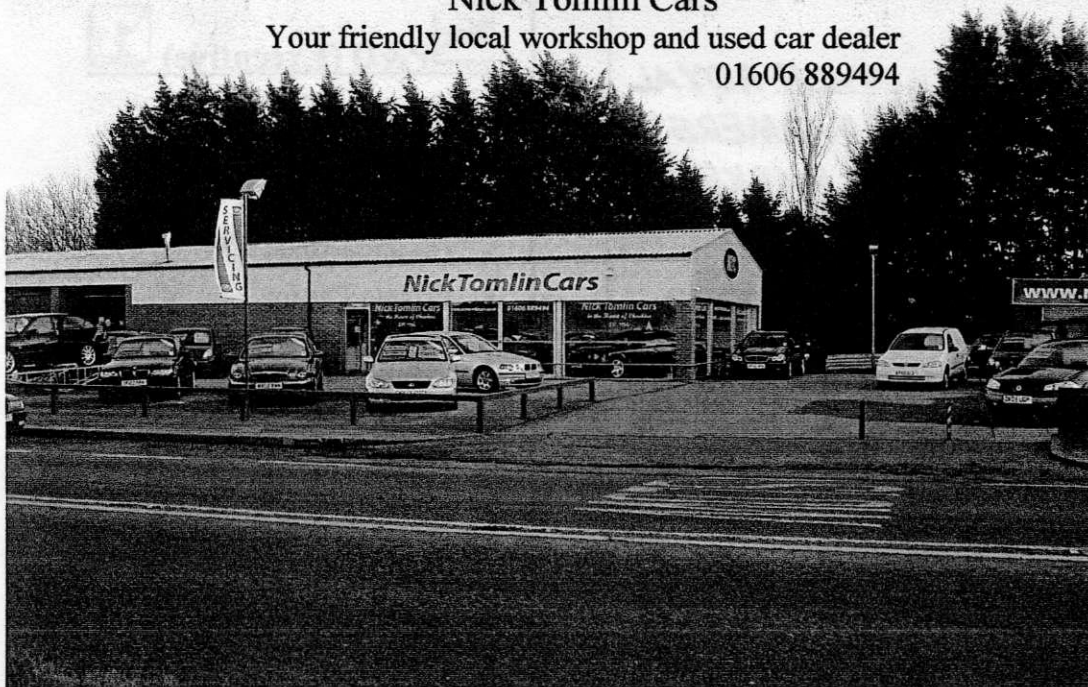
(Great Barrow, near Tarvin)

www.roseclocks.co.uk



Nick Tomlin Cars

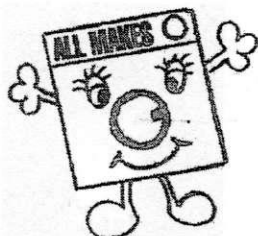
Your friendly local workshop and used car dealer
01606 889494



Specialises in used BMW & Mercedes along with a wide selection of other used vehicles

- Car servicing offered at competitive rates.
- All makes and models catered for.
- Free collection and delivery in the Oakmere area.

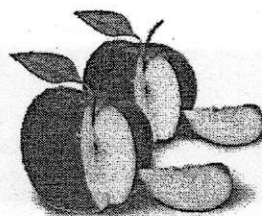
ACKOMATICS



WASHING MACHINES,
TUMBLE DRYERS
&
DISHWASHER REPAIRS

*Also New & Re-conditioned
Machines available for sale or
rental
Reasonable Rates*

Call Paul on 07976 969223
Or 01829 760355
Cotebrook, Tarporley



Cheshire Apple Juice

Cheshire's most pure and natural apple juice
made from the finest quality apples grown on
rich Cheshire Soils.

Ideal for a breakfast juice, or an aperitif
at any time of the day or night.

Choose from over 10 varieties
of apple juice all with their own individual
character and flavour.

No artificial colourings or preservatives,
no sugar is added.

Grown, Pressed & Bottled at Eddisbury Fruit Farm,
Kelsall, Cheshire. Telephone 01829 751300
www.eddisbury.co.uk



**VALE ROYAL
FARMERS'
MARKET**

**EDDISBURY FRUIT FARM
YELD LANE, KELSALL**

**EVERY THIRD SATURDAY
OF THE MONTH
20 Stalls Local Food & Craft**

**17th November, 2007
15th December, 2007
19th January, 2008**



P&D (Executive)



Travel

Little Budworth

- Airport Service
- Contract Work
- Private Parties
- Golf Trips
- Plenty of Luggage Room
- 8 Seat Max
- Wide Seat
- Electric or Standard
- Wheelchair Access (Auto Lift)
- DVD and CD
- Fridge on Request



Tel: 01829 760445



Mobile: 07889 081639

Lest We Forget...

In Delamere church, as in many village churches up and down the country, there are two plaques listing the names of all the parishioners who died in the two World Wars.

There are thirty-six names on the First World War memorial, twelve on the Second World War memorial. This edition of the News will give details of those who fell in World War One. Details of the fallen in World War Two will appear in the October/November edition of 2008. Nearly all the information was supplied by Pat Wheeler of Station Road, who has copies of all the Parish Magazines of the time. Many thanks to Pat for all she did in looking up and passing on these details.

The First World War memorial was unveiled at a special service in April, 1920. Understandably the church was filled with local people, many of whom had suffered personal losses. The choir proceeded up the aisle followed by the Rector, the Reverend George Payne, who carried the pastoral cross, and the Bishop of Chester, Henry Paget. The shortened matins service, at which two hymns, *Praise my soul the king of heaven* and *Fight the good fight*, were sung was followed by the unveiling of the tablet by Lord Wavertree of Delamere. The organist was Mr R.G.Fugler, headmaster of Delamere School.

[Mr Fugler's son's name appears on the World War Two tablet]

R.

October 19th, 1914 **Sergeant R. Ashley** (Cheshire Regiment) died of wounds received in action at No.15 Field ambulance near Violanines. He had served in the regiment for seven years, five of them in India.

December 28th, 1914 **Private J. Pritchard** (Royal Welch Fusiliers) was asleep in his shrapnel-proof shelter when the roof collapsed owing to heavy rain. He died instantly and a small wooden cross was put up by his comrades.

April 9th, 1915 **Private J. White*** (Cheshire Regiment). A company of the regiment had been through the Neuve Chapelle engagement where Private Jonathan White was badly wounded in the thigh. He died shortly afterwards in hospital. (Fred Spruce of Kelsall tells me Private White was his grandmother's first husband)

April 23rd, 1915 **Sergeant J. Nield** (Queen's Own Cameron Highlanders), a regular church-goer and sidesman at Delamere Church, killed in action.

May 16th, 1915 **Private E.Carter** (Royal Welch Fusiliers) was killed in action while serving in France.

August 10th, 1915 **Private H.B.Weston** (Royal Warwickshire Regiment) killed in action.

September 17th, 1915 **Private J.Cook** (Bucks & Herts Yeomanry) had served in the Imperial Yeomanry during the Boer War before joining the Bucks Hussars. His health broke down and he died in a military hospital in Cambridge.

October 3rd, 1915 **Private W.Kirkham** (2nd Battalion Cheshire Regiment) died at the Battle of Loos where there were very heavy losses.

November 15th, 1915 **Private F. Fowles** (6th Dragoon Guards) was serving with the 8th Battalion West Riding Regiment in the Dardenelles where he contracted typhoid. He was invalided to a hospital in Malta where he died.

July 14th, 1916 **Lance Corporal F. Robinson** (Cheshire Regiment) was serving with the 10th Battalion in France when he was reported missing and shortly afterwards it was reported that he had lost his life.

July 14th, 1916 **Private J. Lewis** (Cheshire Regiment) reported missing.

July 29th, 1916 **Private W. Worrall** (South Wales Borderers) joined the Cheshire Regiment in 1915, went to the front in July, 1916 and transferred to the South Wales Borderers. He was one of ten children and four of his brothers were serving in the army.

September 1st, 1916 **Private H. Crawford*** (North Staffs Regiment).

September 25th, 1916 **E.Grindley** (Grenadier Guards) was killed in action in France, leaving a widow and three young children.

December 16th, 1916 **Captain A. Saunders** (Royal Lancashire Regiment)

December 25th, 1916 **Sapper G. Brooks** (Royal Engineers)

December, 25th, 1916 **Private A. Hughes** (Welsh Guards) had served in France for two years. His grave is in the hospital cemetery at Etaples.

April 15th, 1917 **Private W. Billington** (Cheshire Regiment)

April 20th, 1917 **Private A.J. Fox** (Manchester Regiment) had been employed by W. Harrison of New Pale Farm, Kingswood before enlisting.

April 30th, 1917 **Private J. Robinson** (Cheshire Regiment) was killed in action in Mesopotamia. His brother had died in France nine months before (see above).

6th, 1917 Rifleman P. Walker (South Lancs Regiment) killed in action. The following is from a letter to his family from his commanding officer:

He was at his post in the front line helping to fire a Lewis gun, whilst under heavy fire, when a trench mortar shell burst under fire. The concussion killed him instantly and he suffered no pain. He was a very willing soldier and a great favourite with his comrades.

July 22nd, 1917 Private W. Dale (Manchester Regiment)

July 27th, 1917 Gunner B. Oram (Royal Field Artillery)

August 3rd, 1917 Rifleman W.W. Wright* (Liverpool Regiment)

October 9th, 1917 Private W. Harrison* (Machine Gun Corps)

October 22nd, 1917 Gunner W.H. Atherton (Cheshire Regiment)

October 23rd, 1917 Gunner B. Vicker (Royal Field Artillery). His relations had received a letter from him hoping that the family would still attend Delamere Church. After his death they presented the church with a brass ewer inscribed *In loving memory of Bertram Vicker Royal Field Artillery who was killed in action in France age 24. Faithful unto death.*

November 27th, 1917 Sapper T. Goulbourne (Cheshire Regiment) was wounded and taken prisoner by the Turks in April, 1917. He wrote a short letter to his family. Then they heard in March, 1918 that he had died.

January 4th, 1918 Sapper T. Parry* (Royal Engineers)

March 21st, 1918 Lance Corporal R. Wilson (Manchester Regiment) reported missing.

March 21st, 1918 Sergeant H. Harrison* His brother had died five months earlier (see above).

April 12th, 1918 Lance Corporal T. Pritchard* (South Lancs Regiment) from Kelsall Hill was killed in action in France. His brother had died in 1914.

June 7th, 1918 Bombardier A. Crawford (Royal Field Artillery) died from his wounds in France. He left a wife and five children.

August 22nd, 1918 Private M. Allen (South Lancs Regiment) was wounded about midday and died half an hour later. A shell had fallen quite close to him.

September 12th, 1918 Private G. Weston (Cheshire Regiment).

October 10th, 1918 Private H.S. Barlow (Yorkshire Hussars Yeomanry)

The names of those marked * also appear on the Kelsall war memorial.

Three Robinson brothers, Joe, Fred and Tom, from Delamere enlisted together at the start of the war. Only the youngest, Tom, who was too young and had given the

wrong age in order to enlist, survived. He later worked for many years at Old Pale Farm. I spoke to Tom's daughter Jean Van Suchtelen of Tarvin, who confirmed the details.

Another two brothers, Walter and George (H) Harrison appear on the memorial. Lance Corporal Pritchard's brother had also fallen in 1914.

If you can add any information, however slight, about any of the above, please let me know.

R.

THIS SPACE TO LET

ADVERTISE IN DELAMERE & OAKMERE NEWS

FOR ONLY:

£6.50 QUARTER PAGE

£12.50 HALF PAGE

per issue.

APPEARS SIX TIMES A YEAR

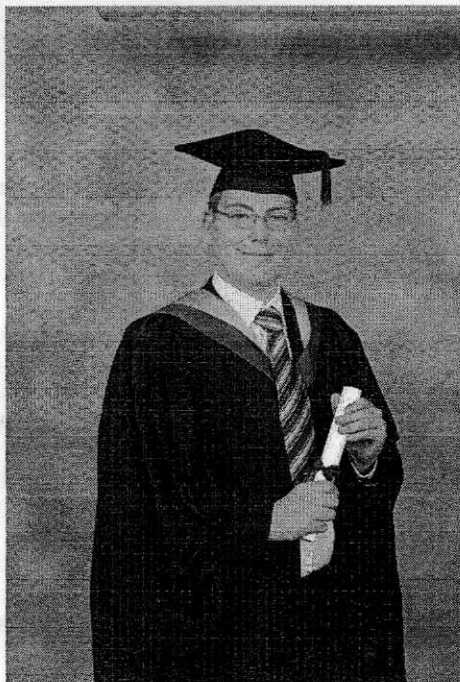
CONTACT Robin Ackerley (01829 752723)

Graduate Success

Andrew Bell of Delamere recently graduated from Harper Adams University College, Shrophire after successfully completing an FdSc/HND in Food Industry and Management at sister college, Reaseheath College, Nantwich.

Andrew, 20, is now studying for a BSc (Hons) in Human Nutrition at Chester University.

Well done, Andrew!



~ ~ ~ ~ ~
Harper Adams University College is the UK's leading university institution serving the rural and land-based industries.

In the 'Sunday Times' University Guide 2007 Harper Adams was named Best University College in the UK and was also short-listed for the prestigious Sunday Times University of the Year Award.

Sunday School

Delamere Church held its second Sunday School meeting on 28th October. The Sunday School meets at 10.30 am in the Parish Room behind the church on the fourth Sunday of every month.

A Christmas Party is planned for December. Details from Gloria Ackerley on 01829 752723.

Christmas Crumble

(This home-made recipe, exclusive to 'Delamere & Oakmere News', was sent in by one of our readers)

A quick and easy dessert which keeps well and with a seasonal flavour.

3 or 4 cooking apples

A handful of mixed fruit (to taste)

4 oz plain flour

4oz Quaker oats

4oz margarine

At least 4 tablespoons of water

Small amount of brown sugar(optional)

* * * * *

Peel and slice apples and place in deep-sided oven-proof dish.

Add mixed fruit and water.

Rub margarine, flour and oats together and place resulting crumble on top of the fruit.

Sprinkle brown sugar on top and press lightly on to crumble.

Heat oven to 180C and bake for about 30 minutes, or until the crumble turns golden brown.

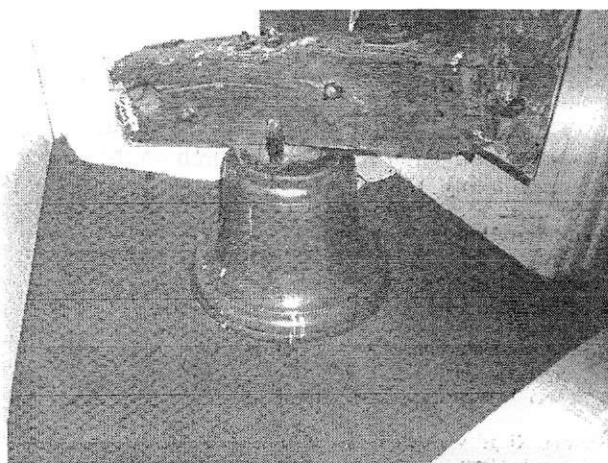
(Add brandy to fruit mixture for an extra festive touch!).

Next issue: New Year Trifle!

Front Page

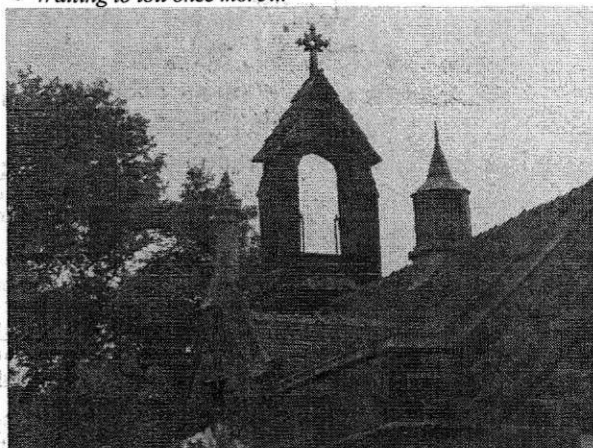
This issue marks the first (and possibly the last) time that we have used a colour picture in *Delamere & Oakmere News*. Colours this autumn have been so lovely - and the Switchback was at its best in October- That it seemed a pity to miss the opportunity.

Unfortunately cost will probably prevent this becoming a regular feature.



The School Bell

< *Waiting to toll once more...*



...Awaiting its bell, the empty bell tower

The Delamere School bell was last rung on May 8th, 1945 – VE Day. It was being rung to celebrate the news that the War had ended, but such was the enthusiasm of the bell-ringers that they overdid it and the clapper fell out of the bell.

Since that day it has remained silent for over sixty years* and in the 1980s it was removed from the bell tower as it was judged to be unsafe. Today it stands on display in the school entrance.

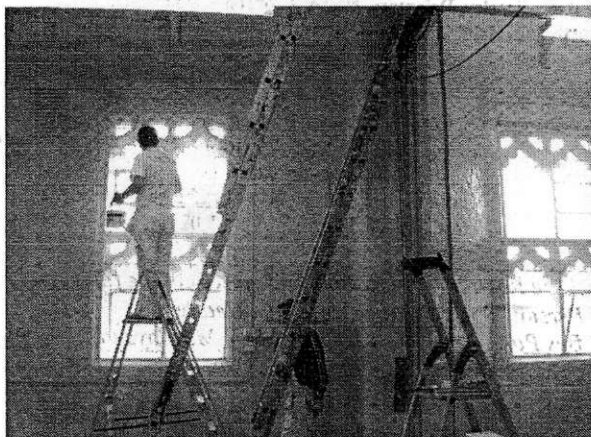
Now there is a very good chance that the bell will be restored to its intended place where, it is hoped, it will ring once more. The school is hoping to obtain a grant from the Heritage Lottery Fund to help cover the cost of restoration. A tender for the work has just arrived for £5,750.

I can just remember the bell being rung in the mornings before school. The rope came down through the roof and into the school hall.

Who were the bell-ringers (almost certainly two senior boys) on that memorable day in 1945? If anyone has any recollection of the occasion, please let me know.

R.

** with the exception of one day in the 1950s when I managed to hit it with a pellet from an air rifle.*



Decorators at work in the school hall during the October half term.

The Two Front Gates

The two wrought-iron gates at the front of the school have now been professionally restored. Facing the school, the gate on the left was in the past the boys' entrance (leading to what was once the boys' playground); the one on the right was the girls' entrance. Owing to the heavy traffic along the A556, the gates are now seldom used and they had fallen into disrepair.

There was some debate as to whether they should be restored or simply replaced with replicas, but it was decided that restoration would be more appropriate.

The excellent restoration work was carried out by Richard Manley of Tarporley. Thanks also to school governor Paul Whittaker-Axon, who arranged for the work to be done.

School Calendar November/December

Mondays – Art Club	Tuesdays- Choir Club	Wednesdays -Homework /Club	Fridays – Football Club
All clubs will finish during week ending Friday 7 th December			
7 th Nov. – Parents' Evening	15 th Nov. – Infants to do Multiskills at TCHS	5 th Dec. – Sports Hall Athletics	
8 th Nov. – Road Safety Assembly	21 st Nov. – PC Woodward Community Police Officer- Stranger Danger	13 th Dec. – Infant Visit to Forest Grotto	
12 th Nov. – Bag2School Returned	27 th Nov. – Junior singing with other schools	20 th Dec. – Christmas Service	
13 th Nov. – Football Match	1 st Dec. – Friends' Christmas Fair	2pm and 6pm at St. Peter's Church	

Travel Information

Trains

From Delamere to Manchester

Return Fare ~ £9.65. Snr. Cit. ~ £6.35.

Cheap Day Returns ~ £7.40 - Snr. Cit. ~ £4.40

(Mon to Sat) Oct 8th - Dec 8th

dep. 10.17 am arr. 11.32 am

then every hour until

dep. 5.17 pm arr. 6.32 pm

then: 6.12 pm &

every hour until 9.12 pm

Last train @ 11.01 pm

From Delamere to Chester

Return Fare ~ £5.55. Snr. Cit. ~ £3.65

Cheap Day Returns ~ £4.10 Snr. Cit. ~ £2.70

(Mon. to Sat).

dep. 10.31 am arr. 10.52 am

then every hour until dep. 11.31 pm

Cuddington to Manchester: 4 mins. later

Cuddington to Chester: 5 mins. earlier.

Buses

Whitegate Travel

Single Full Fare: £2.40

Free Travel after 9.30 with bus pass.

(Tuesdays only - to Northwich)

dep. Frith Avenue 9.20 am

Eddisbury HI Pk 9.30 am

Abbey Arms 9.35 am

then via Little Budworth, Whitegate,

Hartford to

Northwich Watling St. 10.37 am

Sainsburys 10.40 am

Return to Delamere:

dep. Sainsburys 12.20 pm

Watling St. Stand D 12.23 pm

arr. Delamere 1.35 pm

GHA Coaches

[Route 82] Mon - Sat ~ to Northwich

opp. Abbey Arms 8.00 am. Then 8.12

am and 12 past every hour until 4.12 pm

Last buses: 5.17 & 6.22 pm

[Route 82] Mon - Sat ~ to Chester

opp. Abbey Arms 7.40 am. Then 9.00 am

and every hour until 5.00 pm. Last bus

6.05 pm.

Buses leave Chester 32 minutes and

Northwich 20 minutes before the above

times.

[Route 230] Mon - Fri ~ to Winsford

Top End of Kelsall: 8.05 am, 9.50 am,

11.20 am, 1.20 pm & 3.25 pm

Dep. Winsford

8.30 am, 10.15 am, 12.00 pm, 2.00 pm &

4.35 pm

[Route X20] Tues, Thur, Sat ~ to

Cheshire Oaks. Top End of Kelsall:

9.44 am

Day Ticket Adult: £3.30; Child £1.60; Conc. £1.65

Rural Bus Service

01606 871990

To book a journey please ring between 10.00 & 11.30 am the day before you wish to travel.

Fare: £2.30 each way/ £1.15 concessionary.

Free Travel 9.30 - 4.00 on production of bus pass.

Monday

9.30 am Cote Brook, Oakmere, L. Budworth, Utkinton, Tarporley,

Delamere to Winsford. Return 12.00 pm

10.30 am Cote Brook, Oakmere, Utkinton, L. Budworth, Utkinton,

Tarporley, Delamere to Northwich. Return 1.30 pm

12.00 Return from Winsford; 1.30 Return from Northwich.

Tuesday

9.30 am Crowton, Kingsley, Acton Bridge, Norley, Delamere to

Winsford Return 12.00 pm

12.30 pm Crowton, Acton Bridge, Kingsley, Norley, Delamere to

Northwich Return 3.00 pm

Wednesday

9.30 am Cote Brook, Oakmere, L. Budworth, Utkinton, Tarporley,

Delamere to Northwich

Return 12.30 pm

1.30 pm Tarporley, Oakmere, Delamere, Utkinton, L. Budworth, Cote

Brook to Winsford

Return 3.30 pm

Thursday [Bus 1]

9.30 am Kingsley, Delamere, Norley, Crowton, Acton Bridge to

Northwich. Return 11.30 am

Other Routes

From Willington Corner ~ to Tarporley & Bunbury (via

Beeston & Peckforton):

11.47 am, 5.01 pm

From Willington Corner ~ to Chester:

9.33 am, 10.32 am, 12.43 pm, 1.02 pm.

Vale Royal's Concessionary Travel Scheme for Persons aged 60 & over and Disabled People

Bus Pass: Free Travel after 9.30 am Mondays to

Fridays and any time at weekends; half fare before

9.30 am Mondays to Fridays.

Railcard: Cost - £2.50 for 12 months - gives one third

off fares for most rail services.

Bus Pass Forms, to be returned with proof of age, address and passport-size photographs, available from::

Wyvern House, Winsford (01606 867928) or

Castle Park, Frodsham (01928 734440) or

Information Centre, 1 The Arcade, Northwich

(01606 353500)

Usual disclaimers apply to this information.