

Delamere and Oakmere News

Number 16

Dec/Jan 2007-08

Merry Christmas

A few months ago it was SAVE OUR SCHOOL. Now it's another SOS:

SAVE OUR SHOP

What can we do? See overleaf for details...



It can hardly come as a surprise to hear that, with the threatened loss of the village post office, the future of Delamere Stores must also be in doubt.

On this occasion, however, whether the shop stays open or closes is in *our* hands. Many Delamere people don't visit the shop, apart from a monthly visit to pay for the newspaper, because they believe everything is more expensive here than in the supermarkets. Although this is undeniably true of many goods, it is definitely **not** the case with much fruit and veg.

Many greengrocery products at Delamere Stores are sourced locally (within five miles of the shop!). By buying locally not only would you save on the cost of travel (both for yourself and for the goods you buy) **you could also arrange to have your purchases delivered locally free of charge.** What's more, fruit, vegetables or herbs ordered one day will be available on the next. Owner Lee Cartwright claims that if local people were to change their habits and at least buy their greengrocery from Delamere Stores then the business could survive and we would all benefit.

Last week Lee did a cost comparison between items of fruit and veg. at Delamere Stores and Tesco. The results may be a surprise.

	Tesco*	Delamere Stores**
Leeks	£1.99	£1.80 (L)
English Apples	£1.59	£1.90 (L)
Squash	£1.89	£1.80(L)
Cauliflower	89p	89p
Potatoes	58p	80p
Baking Potatoes	£1.29	90p
Lettuce	85p	90-99p
Dirty Carrots	68p	90p (L)
Parsnips	£1.88	£1.80 (L)

L = Local to Delamere.....

.....and I bet Tesco's "home-made" sandwiches aren't half as good!

*Nearest store: Helsby

** Nearest store: Station Road, Delamere.

**GET YOUR VEG FROM
CHESHIRE SOIL AND KEEP
YOUR CARBON FOOTPRINTS
CLEAN!**

Eating Out in Delamere and Oakmere

A quick guide to pubs and restaurants in the parish.

Pubs

Abbey Arms ~ 01606 882747
Boot Inn ~ 01829 751375
Fishpool Inn (see ad. on p5) ~ 01606 883277
Forest View ~ 01606 882860
Fourways (see ad. on p3) ~ 01606 882126

Restaurants/Cafes

Delamere Café (ex Linmere) ~ 01606 889792
Eddisbury Fruit Farm (see p10) ~ 01829 751300
Romany Tearooms ~ 01606 301063
Station Café ~ 01606 889825
Summertrees (See ad. on p7) ~ 01829 751145
Wyevale (The Conservatory) ~ 01829 760433

Spoilt for Choice

There can be no doubt that, whatever else may be missing, we are extremely well served when it comes to dining in our parish. No fewer than five pubs, all serving full meals, and six cafes, many of which also serve full meals, are within a short distance of where we live.

Moreover, if you are feeling adventurous and fancy venturing into foreign territory -- Little Budworth, Cote Brook, Sandiway, Cuddington Kelsall or Norley - there are many more to choose from. There are at least six more pubs within a mile of the parish boundary, at least two restaurants, plus two Chinese takeaways-cum-restaurants, one Indian takeaway. Delamere and Oakmere gourmets have never had it so good....

And to keep you in festive mood here are some really dreadful Christmas crackers...

I went to the doctor. I said to him, "Doctor, my shirt's too tight round the neck." He said, "You've got cholera."

I told my friend I'd got a job in a bowling alley. He said, "Tenpin?" I said, "No, it's a permanent job."

I was in the jungle and there was this monkey with a tin opener. I said, "You don't need a tin opener to peel a banana." He said, "No, this is for the custard."

... they get worse as you read on!

THE FOURWAYS INN

at Delamere

CONFERENCE CENTRE * BANQUET CATERING * PUB

EVERY SUNDAY 12.00 – 8.00 PM

2 COURSES £7.95

3 COURSES £9.95

CURRY NIGHTS EVERY THURSDAY

LUNCHES MONDAY TO SATURDAY ONLY £5 – OVER 15 ITEMS

**BRING IN THIS ADVERT AND RECEIVE A FREE GLASS OF WINE
WHEN ORDERING A MEAL**

CHESTER ROAD, DELAMERE, NORTHWICH, CHESHIRE CW8 2HB

TELEPHONE 01606 882126. FAX 01606 883334

Email: fourways@thefourways.co.uk Web Site: www.thefourways.inn.co.uk

SWP ELECTRICS

SOCKETS LIGHTS REWIRES

*

NO JOB TOO SMALL WE DO THEM ALL

*

PORTABLE APPLIANCE TESTING

*

PROMPT RELIABLE SERVICE

*

FREE ESTIMATES

*

REFERENCES AVAILABLE

*

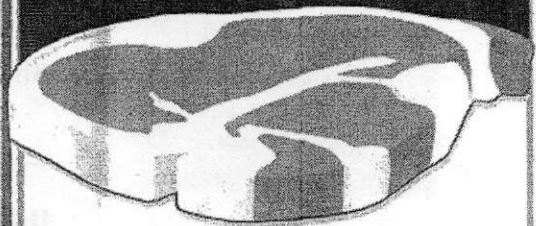
Telephone 01928 740415/740237

Stephen Warburton

Tarvin Road,

Manley, Cheshire WA6 9EW

**OUR REPUTATION
IS AT STEAK!**



DUTTON'S
Quality Meats



**4a Church St, Kelsall
Opp. Dr Surgery**

01829 751355



What's On
Dec/Jan

All events in Delamere Community Centre, unless indicated.

All club/society secretaries Please let me know well in advance the dates of your meetings for the following two months (ie by 16th Jan for Feb/March, etc. (if you would like them included in this diary).

*Contact me on either:
01829 752723, or by e-mail:
robin.ackerley@btinternet.com
or at: The Paddock, Stoney Lane, Delamere*, Tarporley CW6 0SX*

*(*not Kelsall)*

Mon., 10th Dec.
Delamere Parish
Council
Committee Meeting
Delamere School
7.30pm

Tues., 11th Dec.
Women's Institute
Christmas Party
Table Decoration Competition
7.30pm

Wed., 12th Dec.
Golden Age
Christmas Lunch
Members only
(contact Jim Emerton on 01270 668934 for details)

Sun., 16th Dec.
Oakmere Methodist
Church
Carol Service
2.30pm

Sun., 16th Dec.
Delamere Church
Nine Carols Service
6.30pm

Sun., 23rd Dec.
Delamere Church
Service of the Word
Sunday School Tableau
10.30am

Christmas Eve
Delamere Church
Christingle Service
4.00pm
Midnight Communion
11.45pm

Christmas Day
Delamere Church
Holy Communion
8.00am
Family Service
with Communion
10.30am

Christmas Day
Oakmere Methodist
Church
Christmas Service
10.45am
Wed., 2nd Jan.

Golden Age
"Free and Easy"
(Dominoes, Cards,
Bingo, etc.)
2.00pm

Tues., 8th Jan
Women's Institute
Mr. R. Willis
Talk with slides on
Visit to Mongolia
7.30pm

Wed., 9th Jan.
Golden Age
Slides & Talk on New
Zealand
2.00pm

Mon., 14th Jan.
Delamere Community
Association
Committee Meeting
7.15pm

Mon., 21st Jan.
Delamere Parish
Council
Committee Meeting
Delamere School
7.30pm

Wed., 23rd Jan.
Golden Age
Talk on Healthy Eating
2.00pm

Sun., 27th Jan.
Delamere Church
Plough Sunday
10.30am

Delamere Primary
School
MUMS' AND
TODDLERS'
CLUB

Come and have FUN!
Every Monday 1 till 3pm
£1 entry including
refreshments
Stoney Lane, Delamere, CW6 0ST
01829 751450

Theft of Lead and Copper
Vale Royal Home Watch has reported an increase in the theft of lead and copper from roofs – particularly from churches and schools. Even inspection grid covers have been disappearing. All this is due to the rise in the cost of metals.

If you see anything suspicious, ring 0845 4580000.

Fake Water Board Officials have struck in Tarvin recently where they entered an 85-year-old woman's house and made off with jewellery. Be wary!

Vale Royal Printers
My personal thanks (and a Happy Christmas) to Tony Grant and co, Vale Royal printers, for their unfailing helpfulness and efficiency in producing this newsletter over the last 16 editions.
Robin Ackerley.

Imperial v Metric
It is the policy of this Newsletter to refer only to imperial weights and measures.

R

The Fishpool Inn

Pre Christmas Fayre

Available from November 29th to December 31st

Full Christmas Menu ~ £16/ Small Portion £12

**Christmas Day Lunch £50*

** £20 per head deposit. Choices to be in 10 days beforehand*

Traditional Ales

Garden

Open: 11.30 – 3.00 & 5.30 – 11.00 Monday to Friday

All Day Saturday & Sunday

Food Served All Day at Weekends.

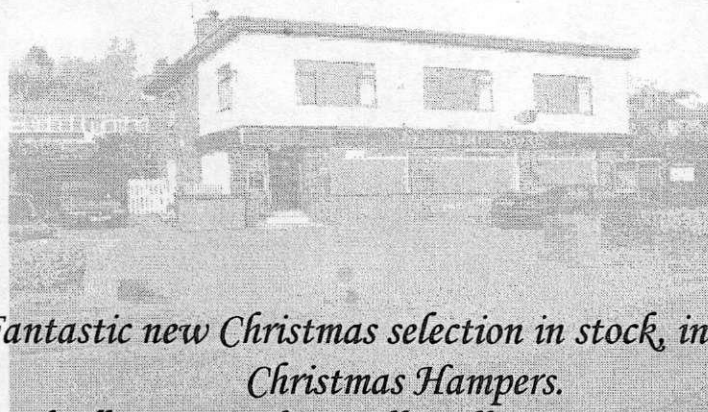
Senior Citizens Menus Available ~ £5.95

Telephone: 01606 883277

DELAMERE STORES

13 Station Road, Delamere, Northwich, Cheshire CW8 2HU

Tel: 01606 882226



*Fantastic new Christmas selection in stock, including
Christmas Hampers.*

A traditional village store and post office offering an extensive range of fresh produce, wines and beers. The store has recently expanded and now offers a wide range of delicatessen products, including an in-store bakery and a full menu of fresh hand-made sandwiches which are prepared as you wait.

Come and visit us.

**WE ARE OPEN: 6.30AM – 6PM Mon – Fri; 6.00 am – 6.00pm
Saturday & 7am – 2pm Sunday**

A Christmas Message

From the Rev Ann Kenton

Hello everyone,

I don't know about you but I can't say that I enjoy the shortness of the daylight hours that we have now. Since turning the clocks it seems that we reach dusk before we are ready for it. Doctors have recently recognised that people suffer from light deprivation in the winter.

However it only takes one small tea light to dispel the darkness that comes with night. Although easily extinguished the small flame cuts through the velvety darkness enlightening all those around.

Christmas is a time when we busily decorate our houses with trinkets and lights and the candles on the Advent ring will be lit week by week. We celebrate the birth of a child in a dark and dingy stable in a world filled with suffering and oppression. From that small child, like the great star that heralded it, would shine a redeeming light that would transform the world.

There are still dark places in our world and there are those who will not enjoy the festivities that we have.

We pray for them and that the light of our love for each other can never be extinguished.

Yours in Christ

Ann Kenton.

Keep Fit Class

The Keep Fit Class meets at Delamere Community Centre every Wednesday



from 10 to 11 am. Qualified instructors. All are welcome. It's good for your health *and* great fun!

*I'm so lazy I've even got a smoke alarm with a snooze button.
I phoned the local ramblers club the other day and the bloke at the other end just went on and on..
I went to buy a watch and the man in the shop said, "Analogue?" I said, "No, just a watch."*

WILLINGTON FRUIT FARM SHOP

ALL HOME-GROWN APPLES

COX'S ORANGE, BRAMLEY, HOLSTEIN
COX, ROYAL GALA, KIDDS ORANGE,
CHIVERS DELIGHT, GOLDEN
DELICIOUS, BELLE DE BOSKOOP,
CRISPIN & MELROSE
MAINCROP APPLES SOLD IN SMALL OR LARGE
QUANTITIES
HOME-PRESSED APPLE JUICE 7-VARIETIES
CHRISTMAS WREATHS

CHESHIRE POTATOES AND
A FULL RANGE OF
FRESH FRUIT & VEG,
SALADS, LOCAL HONEY, CHESHIRE FARM
ICE CREAM, CHESHIRE YOGHURT &
CHEESES, WELSH FARMHOUSE YOGHURT,
FREE RANGE EGGS, JAMS & PRESERVES,
PRE-PACKED CHEESES, TRAY BAKES

**OPEN: 10am - 5.00pm
EVERY DAY**

Signposted to Willington Fruit Farm
Shop

CHAPEL LANE, WILLINGTON,
Nr. KELSALL, CHESHIRE
Tel: 01829 751216

Wedding Chair Cover Hire



£2.50 per Chair Cover

We also hire Organza Sashes and Bows.
We offer a national Delivery & Collection service
To check availability, and to take advantage of
our free sample service, please contact us

organsdale.linen@yahoo.co.uk

Organsdale Linen

Kelsall, Cheshire

CW6 0SS

Telephone 01829 752782

<http://organsdale-linen.mysite.orange.co.uk>

J.W.Landscapes

Jamie Wright

❖ BLOCK PAVING

❖ FLAGGING

❖ FENCING

❖ GATES

❖ DECKING

❖ TURFING

❖ TREE WORK

❖ FREE ESTIMATES

❖ RELIABLE SERVICE

Little Budworth, Tarporley, Cheshire

Tel: 01829 760223 & 07955 219969

SUMMERTREES TEA ROOM

**Delicious Hot & Cold
Snacks**

**Home-made Soup
and Cakes**

Tues - Thurs 11.00am - 5.00pm

Sat - Sun 10.30am - 5.00pm

Closed Monday & Friday

(Except Bank Holidays)

**Tirley Lane, Willington, Nr. Tarporley,
Cheshire CW6 0PF**

Tel: 01829 751145

THE NORTH-WEST'S FAVOURITE FOR CARAVANS AND OUTDOOR LEISURE

**SET IN OVER 10 ACRES OF
BEAUTIFUL CHESHIRE COUNTRYSIDE!**

- **MASSIVE SHOWROOM - OVER 35 CARAVANS UNDER ONE ROOF!**
- **GREAT CHOICE OF USED CARAVANS FROM ONLY £1995**
- **HUGE LEISURE SUPERSTORE - EVERY OUTDOOR ACCESSORY YOU NEED**
- **OUTDOOR CLOTHING - TOP BRANDS AT THE LOWEST PRICES**
- **1000s OF GIFT IDEAS - GAMES, BOOKS, CARDS & MORE**
- **ROMANY TEAROOM - DELICIOUS HOME-MADE MEALS & BREAKFASTS!**
- **AWARD-WINNING SERVICE DEPARTMENT**
- **AWNING SHOWROOM**



On the A556 Chester Road,
Delamere Forest, Nr. Northwich,
Cheshire CW8 2HB

Open 7 days

The Great Outdoor Experience!

Tel: 01606 882032

Web: www.harringtons-caravans.co.uk

Email: enquiries@harringtons-caravans.co.uk

ROSE CLOCKS

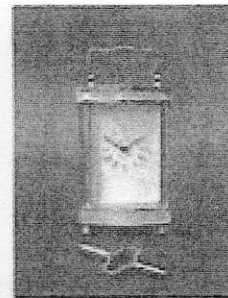
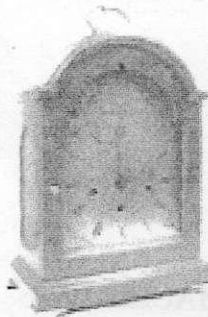
*Always a fine range of
antique and reproduction
clocks for sale.*

Quality clock & barometer
repairs by a
British Horological Institute
award winning horologist
Collection-delivery service

Tel 01829 741747

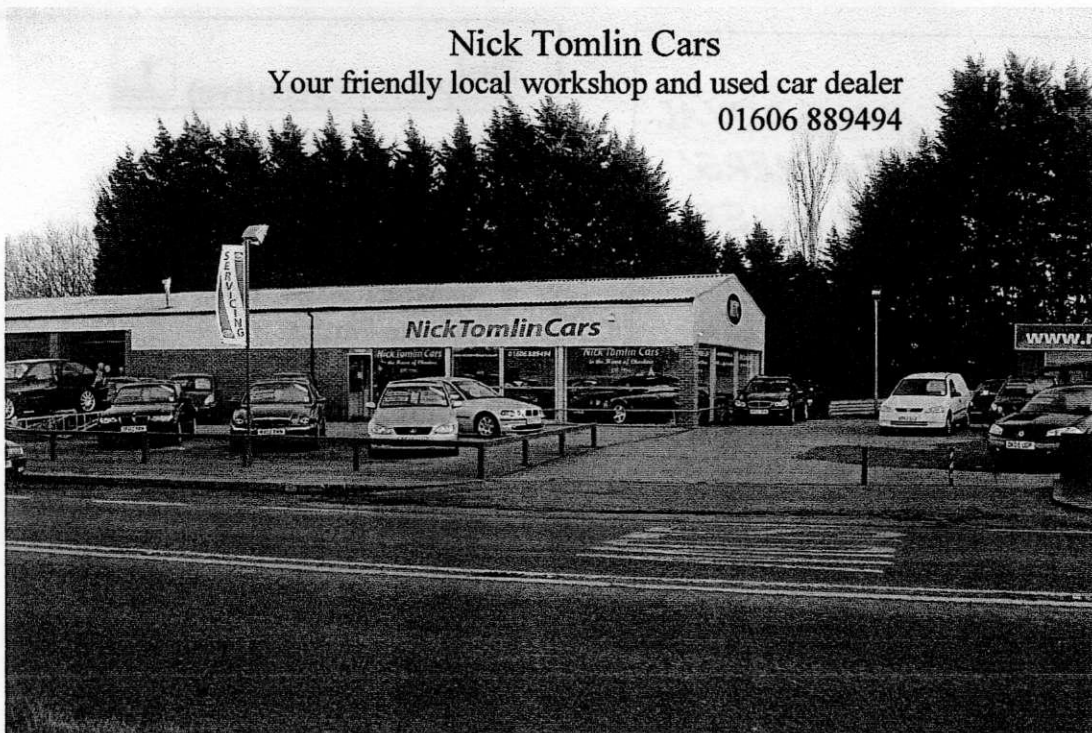
(Great Barrow, near Tarvin)

www.roseclocks.co.uk



Nick Tomlin Cars

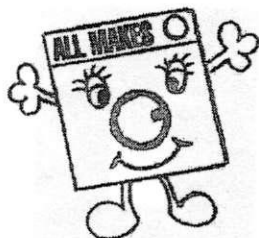
Your friendly local workshop and used car dealer
01606 889494



Specialises in used BMW & Mercedes along with a wide selection of other used vehicles

- Car servicing offered at competitive rates.
- All makes and models catered for.
- Free collection and delivery in the Oakmere area.

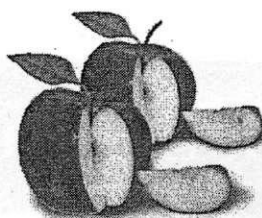
ACKOMATICS



WASHING MACHINES,
TUMBLE DRYERS
&
DISHWASHER REPAIRS

*Also New & Re-conditioned
Machines available for sale or
rental
Reasonable Rates*

Call Paul on 07976 969223
Or 01829 760355
Cotebrook, Tarporley



Cheshire Apple Juice

Cheshire's most pure and natural apple juice
made from the finest quality apples grown on
rich Cheshire Soils.

Ideal for a breakfast juice, or an aperitif
at any time of the day or night.

Choose from over 10 varieties
of apple juice all with their own individual
character and flavour.

No artificial colourings or preservatives,
no sugar is added.

Grown, Pressed & Bottled at Eddisbury Fruit Farm,
Kelsall, Cheshire. Telephone 01829 751300
www.eddisbury.co.uk



VALE ROYAL FARMERS' MARKET

EDDISBURY FRUIT FARM
YELD LANE, KELSALL

EVERY THIRD SATURDAY
OF THE MONTH
26 Stalls Local Food & Craft

15th December, 2007
19th January, 2008
16th February, 2008



P&D (Executive)



Travel

Little Budworth

- Airport Service
- Contract Work
- Private Parties
- Golf Trips
- Plenty of Luggage Room
- 8 Seat Max
- Wide Seat
- Electric or Standard
Wheelchair Access (Auto Lift)
- DVD and CD
- Fridge on Request



Tel: 01829 760445

Mobile: 07889 081639



Delamere W.I. **75 NOT OUT...**

At their November meeting members were delighted to congratulate Charl Christopher on her 75 years as a W.I. member. *Is there anyone out there who can claim a longer membership than this?*

Charl first joined the W.I. as a twelve-year-old girl in the small village of Criftons in Shropshire. In those days the W.I. was the only society for rural women and Charl went along with her mother as a junior member. The junior section was for 12 to 18-year-olds and they attended the same meetings but had a different competition during the social half hour.

When her family moved to St. Martin's Charl again joined the W.I. and during the war years she remembers W.I. members knitting socks and scarves for soldiers. They also worked as air-raid wardens and Charl's job was to man the telephones for two nights each week.

Charl married in 1940 and, with her husband away at war, she continued in the W.I. Her first child, Elizabeth, was Martin's while her husband worked in Warrington. Eventually they were able to buy a home and moved to Thelwall in 1949.

At that time there was no W.I. in Thelwall so Charl attended meetings in nearby Grappenhall. However, over the next few years three large estates were built and a W.I. was formed in 1957/58. During the first year Charl was treasurer, but she admits that she was not very efficient, so her husband did most of the work. In the second year the president moved south with her husband and (familiar story) no one could be found to replace her! However, a novel solution was found to this dilemma: all seventy members wrote down the name of the member they would like as president and the person with the most votes would stand for one year – and that was Charl's introduction to being president!

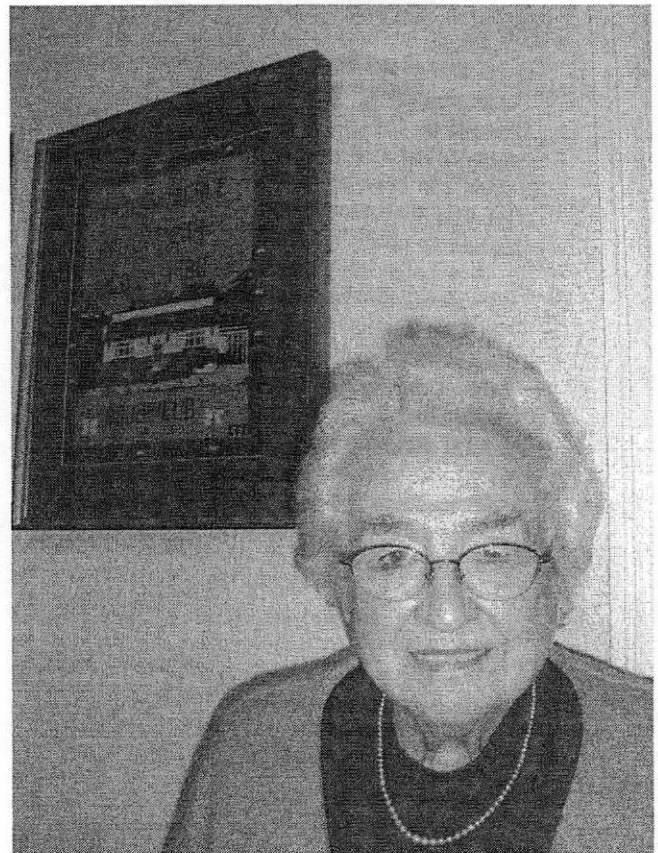
By 1970 the family, now with three children, had moved to Delamere and Charl went along to the W.I. with her neighbour. She has since been president on a number of occasions, including the early 1980s, when I first moved to Delamere.

Charl has been a very active member and has served on the County Committee for *Associated Country Women of the World*. She has enjoyed many W.I. activities and learned her embroidery, cross-stitch and crochet skills at W.I. classes. The crochet lessons caused some amusement since Charl is left-handed and she had to follow instructions through a mirror! She has also taken part in the county scrabble and darts competitions and is a whole-hearted supporter of the Group Meeting. – a long and happy association with the W.I....

...And, in her own words,

“and I’m still here!”

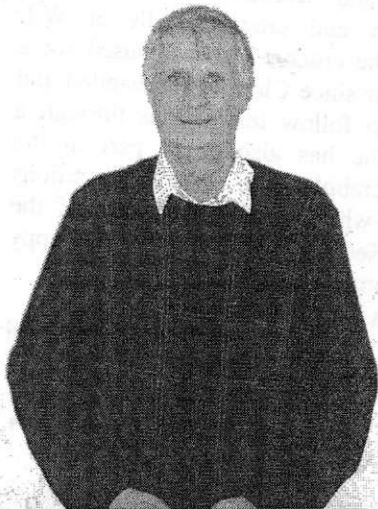
Sue Goodwin



Charl Christopher

The sampler in the picture was designed and executed by Charl for her 40th wedding anniversary. It shows her home in Station Road.

Happy Birthday, Derek!



Derek Wheeler of Station Road celebrates his 70th birthday on 11th December – which also happens to be Derek and wife Pat's 38th wedding anniversary.

Few can have done more for Delamere and Oakmere than Derek since he came here from his Southampton home 34 years ago.

A member of Delamere Parish Council for 25 years and of the Parochial Church Council for the past 10 years, Derek has also been for some time a leading figure on the committee of the Community Association as well as past Chairman.

As if all this weren't enough, he collects up to 30 prescriptions each week from Sandiway and Hartford pharmacies to deliver to the elderly and housebound in the area.

It was in recognition of all these activities that Derek was given the Vale Royal Mayor's Award for Endeavour in the Community in 2005.

We are lucky to have someone of Derek's calibre and commitment in our midst and I'm sure everyone will want to join in wishing him a **very happy birthday** – and many more to come!

* * * * *

We did the "memory" walks

At the end of October a six(ish) mile sponsored walk from Davenham on paths, fields and canal banks was enjoyed (or endured) by eighteen friends and volunteers, and in the process raised the grand sum of £730 pounds for the Alzheimer's Society.

Having seen the devastating effect on friends and family from this distressing condition, I had decided to try and raise money towards more research into possible treatments.

On a quiet autumn day we were challenged by a large herd of cattle, we strode through mud, and even overcame one blocked "right of way" to eventually partake of much deserved tea at Whatcroft Organic Farm.

Two days later a further five and a half miles were enjoyed by myself and two generous contributive friends who were unable to participate in the original walk. Another lovely day, lots of chatter, as you can imagine from three ladies together, and refreshments along the Sandstone Trail at Summertrees.

All in all a very successful two days, and I personally wish to thank all who took part – and most of all to everyone who contributed to this very creditable sum of money

Thank you,

Carol A. Jordan



Carol and Kay putting on a brave smile, despite having stepped back on to the electric fence near to Summertrees. The llamas in the background took it all very calmly.

Many, many thanks to my lovely friends in Delamere Grove, The Ridge, Eddisbury Hill and Lark Rise.

The support, help and thoughtfulness since my accident has been amazing. The flowers, cards, visits and 'phone calls have been such a help. Again, my very warmest thanks to one and all.

Wendy Twiss.

School Calendar

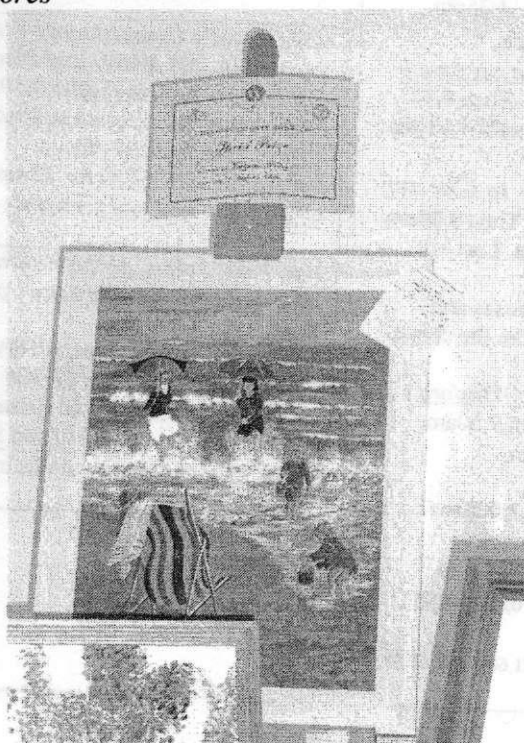
- 13th Dec. - Infant visit to Santa's Workshop, Delamere Forest
- 14th Dec.- School Christmas Dinner, followed by forest walk and kite flying
- 16th Dec.- Sunday School Christmas Party
- 20th Dec.- School Christmas Play 2pm & 6pm at St. Peter's Church
- 10th Jan. - Watt Watch – electricity and saving energy
- 15th Jan.- Eco Committee Meeting for carbon Neutral
- 16th Jan.- Boys' Indoor Football Tournament
- 31st Jan. -Gripping Yarns Theatre Production

My mate asked me, "What do you think of voluntary work?" I said, "I wouldn't do it if you paid me."



*A Historic Picture: Delamere W.I. Christmas Party, December 2004.
In November, 2007 Carol Evans (front row, far left) retired from her post as
Treasurer after 18 years.*

*At the 2007 Cheshire Show Margaret Walley's painting (below) was awarded
3rd prize in the W.I. Painting Competition. The theme was "The Water's Edge".
Margaret is second from right, back row. Many of you will have met Margaret, as she
serves in Delamere Stores*



Travel Information

Trains from 10th December

From Delamere to Manchester

Return Fare ~ £10.10. *Snr. Cit.* ~ £6.65.
Cheap Day Returns ~ £7.40-*Snr. Cit.* ~ £5.10
 (Mon to Sat).

dep. 10.21 am arr. 11.32 am
 then every hour until
 dep. 5.21 pm arr. 6.32 pm
 then: 6.12 pm &
 every hour until 9.12 pm
 Last train @ 11.00 pm

From Delamere to Chester

Return Fare ~ £5.80 *Snr. Cit.* ~ £3.85
Cheap Day Returns ~ £4.10 *Snr. Cit.* ~ £2.85
 (Mon. to Sat).

dep. 10.31 am arr. 10.52 am
 then every hour until dep. 11.31 pm
 Cuddington to Manchester: 4 mins. later
 Cuddington to Chester: 5 mins. earlier.

Buses

Whitegate Travel

Single Full Fare: £2.40

Free Travel after 9.30 with bus pass.

(Tuesdays only - to Northwich)

dep. Frith Avenue 9.20 am
 Eddisbury HI Pk 9.30 am
 Abbey Arms 9.35 am
 then via Little Budworth, Whitegate,
 Hartford to

Northwich Watling St. 10.37 am
 Sainsburys 10.40 am

Return to Delamere:

dep. Sainsburys 12.20 pm
 Watling St. Stand D 12.23 pm
 arr. Delamere 1.35 pm

GHA Coaches

[Route 82] Mon - Sat ~ to Northwich
 opp. Abbey Arms 8.00 am. Then 8.12
 am and 12 past every hour until 4.12 pm
 Last buses: 5.17 & 6.22 pm

[Route 82] Mon - Sat ~ to Chester
 opp. Abbey Arms 7.40 am. Then 9.00 am
 and every hour until 5.00 pm. Last bus
 6.05 pm.

Buses leave Chester 32 minutes and
 Northwich 20 minutes before the above
 times.

[Route 230] Mon - Fri ~ to Winsford

Top End of Kelsall: 8.05 am, 9.50 am,
 11.20 am, 1.20 pm & 3.25 pm

Dep. Winsford
 8.30 am, 10.15 am, 12.00 pm, 2.00 pm &
 4.35 pm

[Route X20] Tues, Thur, Sat ~ to
 Cheshire Oaks. Top End of Kelsall:
 9.44 am

Day Ticket: Adult: £3.30; Child £1.60; Conc. £1.65

Rural Bus Service

01606 871990

To book a journey please ring between 10.00 &
 11.30 am the day before you wish to travel.

Fare: £2.30 each way/ £1.15 concessionary.

Free Travel 9.30 - 4.00 on production of bus pass.

Monday

9.30 am Cote Brook, Oakmere, L. Budworth, Utkinton, Tarporley,
 Delamere to Winsford. Return 12.00 pm

10.30 am Cote Brook, Oakmere, Utkinton, L. Budworth, Utkinton,
 Tarporley, Delamere to Northwich. Return 1.30 pm
 12.00 Return from Winsford; 1.30 Return from Northwich.

Tuesday

9.30 am Crowton, Kingsley, Acton Bridge, Norley, Delamere to
 Winsford Return 12.00 pm

12.30 pm Crowton, Acton Bridge, Kingsley, Norley, Delamere to
 Northwich Return 3.00 pm

Wednesday

9.30 am Cote Brook, Oakmere, L. Budworth, Utkinton, Tarporley,
 Delamere to Northwich
 Return 12.30 pm

1.30 pm Tarporley, Oakmere, Delamere, Utkinton, L. Budworth, Cote
 Brook to Winsford
 Return 3.30 pm

Thursday [Bus 1]

9.30 am Kingsley, Delamere, Norley, Crowton, Acton Bridge to
 Northwich. Return 11.30 am

Other Routes

From Willington Corner ~ to Tarporley & Bunbury (via
 Beeston & Peckforton):
 11.47 am, 5.01 pm

From Willington Corner ~ to Chester:
 9.33 am, 10.32 am, 12.43 pm, 1.02 pm.

Vale Royal's Concessionary Travel Scheme for Persons aged 60 & over and Disabled People

Bus Pass: Free Travel after 9.30 am Mondays to
 Fridays and any time at weekends; half fare before
 9.30 am Mondays to Fridays.

Railcard: Cost - £2.50 for 12 months - gives one third
 off fares for most rail services.

Bus Pass Forms, to be returned with proof of age,
 address and passport-size photographs, available
 from:

Wyvern House, Winsford (01606 867928) or
 Castle Park, Frodsham (01928 734440) or
 Information Centre, 1 The Arcade, Northwich
 (01606 353500)

Usual disclaimers apply to this information.