

# Delamere and Oakmere

## News

Number 19

Oct/Nov 2008

### Oakmere Win Promotion

On the last Saturday of the season Oakmere Cricket Club's 1st XI clinched promotion from Division One of the Meller Braggins League to the prestigious Cheshire County League.

With rain affecting recent games, promotion was by no means a certainty until Oakmere defeated Ashley by eight wickets to stay 4 points ahead of rivals Congleton and so secure second place.

There is no doubt that life will be tough at the higher level where many clubs rely on signing overseas professionals to strengthen their squads. Commendably, Oakmere have decided against this, preferring to rely on local talent and give opportunities to their home-grown juniors. The club policy of encouraging young players is already paying dividends and the Under 11s, Under 13s, Under 15s and under 18s have all had very successful seasons.

Strength in depth is certainly a club asset: the 2<sup>nd</sup> XI finished 3<sup>rd</sup> in their division in which they were in contention for top place until the very last fixture.

Oakmere Ladies ended the season in mid-table in the Premier League of the Cheshire Women's Cricket Association and reached the final of the Cheshire Plate.

.....All this is a far cry from the days when a group of local enthusiasts persuaded a local farmer to let them use part of his field; the farmer joined the side, the field was mowed, the cows removed for matches, a wicket was laid, a wooden pavilion built - and now fifty years on Oakmere has every reason to be proud of the dedication of those original members, some of whom are still connected with the club, and the achievements of its current players. **Good luck for next season, Oakmere!**

#### The Victorious Team

(taken before the celebrations started)



Back Row: Jim Ackerley, Paul Yearsley (Vice-Capt), Nick Ball, Chris Nelson, Stewart Eaton, Nick Guest  
Front Row: Phil Nelson, Paul Hutchinson, Ian Eaton (Capt), Jon Owen, Peter Hutchinson

**What's On  
Oct/Nov**

*All events in Delamere  
Community Centre, unless  
indicated.*

*All club/society secretaries  
Please let me know well in  
advance the dates of your  
meetings for the following two  
months (ie by 16<sup>th</sup> November  
for Dec/Jan, etc. (if you would  
like them included in this  
diary).*

*Contact me on either:  
01829 752723, or by e-mail:  
[robin.ackerley@btinternet.com](mailto:robin.ackerley@btinternet.com)  
or at: The Paddock, Stoney  
Lane, Delamere\*, Tarporley  
CW6 0SX*

*(\*not Kelsall)*

---

**Golden Age**  
Wed. 1<sup>st</sup> October  
*Chairiobics*  
2.30pm

---

Sunday 5<sup>th</sup> October  
**Harvest Festival**  
Delamere Church  
10.30am

Tues. 7<sup>th</sup> October  
**Harvest Supper**  
Tickets obtainable from  
Anne Bold (01606 882649)  
£9 Adults/£5 children  
7.30pm

---

**Women's Institute**  
Tues. 14<sup>th</sup> October  
Mr Ken Warburton  
*Training & working  
with Siberian Huskies*  
7.30pm

---

**Golden Age**  
Wed. 15<sup>th</sup> October  
*Harvest Thanksgiving*  
2.30pm

---

**Delamere Parish  
Council**  
Mon 20<sup>th</sup> October  
Committee Meeting  
Delamere School  
7.30pm

---

**Golden Age**  
Wed 29<sup>th</sup> October  
*Lunch, Talk &  
Slideshow on  
Cheshire Villages*  
Members only  
12.30pm

---

Sunday 9<sup>th</sup> November  
**Remembrance Day  
Service**  
Delamere Church  
10.45am  
and at  
Oakmere Methodist  
Church  
6.30pm

**Community  
Association**  
Mon. 10<sup>th</sup> November  
Committee Meeting  
7.15pm

---

**Women's Institute**  
Tues. 11<sup>th</sup> November  
**Annual Meeting**  
7.30pm

---

**Golden Age**  
Wed. 12<sup>th</sup> November  
*Christmas Shopping*  
All welcome

---

**Delamere Parish  
Council**  
Mon 17<sup>th</sup> November  
Committee Meeting  
Delamere School  
7.30pm

---

**Golden Age**  
Wed. 26<sup>th</sup> November  
*'Delamere Derby'*  
Members only  
2.30pm

---

**Women's Institute**  
Tues. 9<sup>th</sup> December  
*Christmas Party*  
*Home-made Christmas Card  
Competition*  
7.30pm

---

**Golden Age**  
Wed. 10<sup>th</sup> December  
*Christmas Lunch*  
Members only  
12.30pm

**St.Peter's, Delamere**  
**Sunday School**  
Meets every 4<sup>th</sup> Sunday in the  
month. All ages welcome. For  
further details please phone  
Gloria Ackerley  
on 01829 752723

---

**Delamere Primary  
School**  
**MUMS' AND  
TODDLERS'  
CLUB**

Come and have FUN!  
Every Monday 1 till 3pm  
£1 entry including  
refreshments  
Stoney Lane, Delamere, CW6 0ST  
01244 981145

**DELAMERE BINGO  
CLUB**  
Bingo every Saturday  
Prize Bingo every 4<sup>th</sup>  
Tuesday  
Eyes down 7.30-pm

---

**Imperial v Metric**  
It is the policy of this Newsletter  
to refer only to imperial weights  
and measures.

R.

**Letters, please....**

Write in to the Newsletter  
(address/email above), if you  
have any opinions, articles  
complaints etc. that you'd like  
to see included in the next  
edition.

# THE FOURWAYS INN

*at Delamere*

**CONFERENCE CENTRE \* BANQUET CATERING \* PUB**

**EVERY SUNDAY 12.00 – 8.00 PM**

**2 COURSES £7.95 3 COURSES £9.95**

**EVENING SET MENU (FROM 6.00PM):**

**2 COURSES £8.95 3 COURSES £10.50**

**LUNCHESES MONDAY TO SATURDAY ONLY £5 – OVER 15 ITEMS**

**BRING IN THIS ADVERT AND RECEIVE A FREE GLASS OF WINE  
WHEN ORDERING A MEAL**

**CHESTER ROAD, DELAMERE, NORTHWICH, CHESHIRE CW8 2HB**

**TELEPHONE 01606 882126. FAX 01606 883334**

**Email: [fourways@thefourways.co.uk](mailto:fourways@thefourways.co.uk) Web Site: [www.thefourwaysinn.co.uk](http://www.thefourwaysinn.co.uk)**

## **SWP ELECTRICS**

**SOCKETS LIGHTS REWIRES**

\*

**NO JOB TOO SMALL WE DO THEM ALL**

\*

**PORTABLE APPLIANCE TESTING**

\*

**PROMPT RELIABLE SERVICE**

\*

**FREE ESTIMATES**

\*

**REFERENCES AVAILABLE**

\*

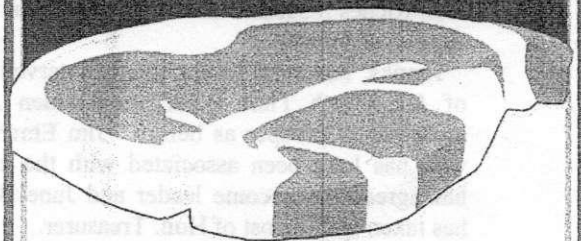
**Telephone 01928 740415/740237**

**Stephen Warburton**

**Tarvin Road,**

**Manley, Cheshire WA6 9EW**

**OUR REPUTATION  
IS AT STEAK!**



**DUTTON'S**  
*Quality Meats*



**4a Church St, Kelsall  
Opp. Dr Surgery**

**01829 751355**



### **Return of the News....**

*I'm sorry there's been such a gap between Newsletters. I realised after the last one, the April/May edition, that I just wouldn't have the time over the summer to spend sitting at my computer churning out more copy, when I'd so many other things to do – and producing each Newsletter takes up a great deal of time.*

*One reason was that in May Gloria and I spent three weeks visiting Canada. This really was the holiday of a lifetime. We should have gone the year before, but just after we'd booked the holiday and bought the cases the consultant cardiologist said I'd got to have a heart op. and I could forget about Canada. This made this year's visit all the more special.*

*I promise not to bore you with all the holiday details (or photographs!), but – to be brief – we flew from Manchester to Toronto, stayed for five days with cousins in Toronto then took the train across to the Rockies. After a few days in Jasper we took another train, the Rocky Mountaineer, to Vancouver and spent a week on a small island off Vancouver Island with an old friend I hadn't seen for thirty-five years.*

*The whole trip was quite unforgettable – we've got several hundred photos to prove it. If anyone is contemplating such a holiday – and I can certainly recommend it – don't hesitate to get in touch, if you'd like to know any more details and how we planned our itinerary.*

*On second thoughts, sometime when I'm short of material I might just inflict my holiday memoirs on you after all. You have been warned!.....  
R.*

### **Golden Age Reprieve Time Bank to the Rescue**

Earlier this year the future looked bleak for Delamere's Golden Age Club. With the pending retirement of long-standing leader Jean Riches it seemed that the club was in real danger of folding.

Thanks, however, to the timely intervention of Ash-Worth Time Bank, the Golden Age looks set to prosper as before. Jim Emerton, who has long been associated with the club, has agreed to become leader and June Budd has taken on the post of Hon. Treasurer.

A glance at the *What's On Diary* on page 2 will show that the Golden Age is as thriving as ever.

And what of the mysterious Ash-Worth Time Bank?

No mystery at all: just turn to page 15 and find out all you need to know about this excellent organisation.

### **From My Window...**

Although we have had a very wet summer, the natural world has not disappointed. A pair of pheasants have had young, three females and one male. They come to feed twice a day.

A family of woodpeckers come to the peanut holder every day. No swallows have nested nearby this year, which makes me very sad. Sparrows have done very well making use of all the nest boxes.

Old nest boxes will have to be moved away from where a family of unwelcome squirrels feed. A polecat has been spotted looking into the window of a house in Oakmere.

The pied wagtail is a joy to watch with its tail in non-stop flicking motion and leaping and dancing in the air to catch insects which is their staple diet.

Butterflies have been very rare this summer; only the cabbage white seems to have flourished.

*D.D.*

### **New Hobby for Bird-Watchers**

A strange bird was seen recently over Eddisbury Hill. It was being mobbed by a flock of swallows one of which it had in its talons. Neither Gloria, my wife, nor I had ever seen anything like it; similar to a kestrel it had scythe-shaped wings. We phoned local ornithologist Peter Twist who instantly identified it as a hobby.

They are summer visitors and have apparently been sighted recently in the area, although they were until recently only seen in southern England.

They frequently swoop on swallows and make off with them.

### **The Garden Party**

The Under 11s Football competition with 8 teams participating was again considered to be a great success. This was the competition's fourteenth consecutive year and the winners for the first time, having entered a team every year, were Tarporley Cubs. They beat Bunbury Cubs 2-0 in the final.

As usual medals were presented to all the finalists with a Tarporley player being named Player of the Tournament. Thanks must go to the referees, David Gore and Dennis Duignan, programme scorer Terry Harrop and Gordon Moss for his expertise in setting out the pitch.

The usual sideshows were in evidence and played their part in raising funds. Thanks to those who manned the various activities once again.

Finally a big thank you to Barclays Bank for their annual support – a fantastic £2,250 over the last three years.

*Mike Gore.*

### **Congratulations, Ann!**

Oakmere Methodist Minister Ann Kenton marries on Saturday 4<sup>th</sup> October at Tarvin Methodist Church.

Congratulations and very best wishes to Ann and husband-to-be Paul Rigby-Jones

### **Cards for Good Causes**

*The Cards for Good Causes Multi-Charity Christmas Card Shop* opens in Tarporley Baptist & Methodist Church from Sat., 25<sup>th</sup> October to Sat., 29<sup>th</sup> November; Mondays to Saturdays 10am – 4pm

Cards from 30 different charities will be on sale and each charity receives at least 79p in every £1 from the card sales.

Enquiries to Mary Thompson 01829 733642.

# *The Fishpool Inn*

*Traditional Ales*                      *Garden*

**Open: 11.30 – 3.00 & 5.30 – 11.00 Monday to Friday**

**All Day Saturday & Sunday**

**Food Served All Day at Weekends.**

**Senior Citizens Menus Available ~ £5.95**

**Telephone: 01606 883277**

## **DELAMERE STORES**

**13 Station Road, Delamere, Northwich, Cheshire CW8 2HU**

**Tel: 01606 882226**

*A traditional village store offering an extensive range of fresh produce, wines and beers. The store offers a wide range of delicatessen products, including an in-store bakery and a full menu of fresh hand-made sandwiches, which are prepared as you wait.*

*Come and visit us.*

**WE ARE OPEN: 6.30am – 6.00pm Mon. – Thurs.**

**6.30am – 6.00pm Friday. 6.00am – 5.00pm Saturday.**

**7.00am - 2.00pm Sunday**

## Oakmere Parish Council

### New Councillor

The council was pleased to co-opt Diane Hodgson at the September meeting. She is the wife of Eric, who was on the council previously. Diane has had many years of N.H.S. management at a very senior level. Now semi-retired she is busy with voluntary and charity work, but feels she can contribute to our local community. She replaces Angela Lupton, who has been a valuable and diligent member. Sadly work commitments have made it difficult for her to continue. Her ability to express an alternative point of view was a most useful contribution to discussion.

### WHAT IS YOUR VIEW ON AFFORDABLE HOUSING?

In recent years the dramatic rise in property values has led not only to first time buyers but also people on modest incomes being priced out of the market in rural areas. Yet these are exactly the people who often work in key service areas (such as the local Primary School teacher), contribute greatly to the local community or have strong ties to the village.

People are being forced to move out of villages, away from communities in which they have lived and contributed. Affordable housing gives local people the opportunity to stay – where at the moment they have little option.

Rural affordable schemes are small scale not large scale developments. We are typically looking from 4 up to around 12 properties on individual sites.

Where a village has an identified need, the new occupants will be limited to those with an already established, strong local connection to the village. This applies to new and subsequent occupants.

Providing homes that are more affordable means providing both rented housing and shared ownership. Shared ownership (now sometimes referred to as Home Buy) allows people to purchase usually between a 25% and a 75% share in the property they live in, so they pay part mortgage and part rent. Households can purchase an initial 25% and after time purchase a greater share – this is called staircasing.

A local agreement would be included to limit staircasing, or the share of ownership in a property, to 80% (for every occupant) to help ensure properties remain affordable in the future. There is no Right to Buy on these schemes.

Affordable housing does not mean poor quality housing. Building Regulations must still be enforced.

Provision of affordable housing is not limited to new development. Whenever possible it includes utilising existing redundant property.

**Oakmere Parish Council has been approached by the Rural Housing Enabler about the provision of affordable housing in the area and has decided to conduct a survey on the subject. A questionnaire will be sent out and its intention is to gather the views of the wider community on the provision of affordable housing in the Parish and establish the degree of need for affordable housing from local people.**

For more information you can contact Phil Addison on telephone 01606 867879 or email [paddison@valeroyal.gov.uk](mailto:paddison@valeroyal.gov.uk). Funded by DEFRA (Department of Environment, Food and Rural Affairs), Phil is this region's Rural Housing Enabler whose role is to advise on rural affordable housing.

### Cheshire Place-names

Compiled by Lindy Timms

*How well do you know Cheshire? Try this quiz. Sorry – no prizes – just a smug feeling if you get them right.*

*Bear in mind that the answers are 'soundalikes' rather than 'spell arights' – and you may find a map useful!*

1. Road surface could make you ill. [9]
2. Highly masculine town [6]
3. A rich Aussie's town. [7]
4. Small house on the rise [7 & 4]
5. Road surface to turn you to drink [6]
6. Give generously [9]
7. Aldous? [6]
8. A medal for climbing this slope [9 & 4]
9. It rains in this establishment [10]
10. Inter that cake [7]
11. An educational colour [7 & 5]
12. Fussity [8]
13. A very hot pig indeed [10]
14. The crossroads cease [4,5 & 3]
15. Up & over whilst country walking [5]
16. A big wheelie [5 & 6]
17. Talkative tiny plant [4 & 4]
18. Rabbits live here [6]
19. Squeezed fruit [9]
20. Angry pig meets ex-footballer [14]
21. Agatha's heroine [6]
22. An adequate sufficiency [5]
23. Lose this and look sick [3 & 5]
24. In a sulk [5]
25. Express surprise at inclement weather

*As Lindy mentioned, no prizes, but the person who sends in the most correct answers will get a special acknowledgement in the Dec/Jan Newsletter, thereby ensuring everlasting fame. (Contact details on page 2)*

*Another 25 Cheshire place-names in the next issue.*



**WILLINGTON  
FRUIT FARM SHOP**

**APPLES**

**COX'S ORANGE PIPPIN,  
BRAMLEY, RED PIPPIN,  
HOLSTEIN COX AND  
JAMES GRIEVE APPLES  
STRAWBERRIES &  
RASPBERRIES  
RUNNER BEANS**

**VISIT OUR SMALL HERB GARDEN.  
BROWSE AROUND THE HERBS IN POTS  
ON SALE**

**HOME-PRESSED APPLE JUICE**

**ALSO FRESH-PICKED RHUBARB AND A FULL  
RANGE OF FRESH FRUIT & VEG., LOCAL  
HONEY, CHESHIRE FARM ICE CREAM,  
CHESHIRE POTATOES, FLOWERS, FREE-RANGE  
EGGS, JAMS & PRESERVES, WELSH  
FARMHOUSE YOGHURTS, CHESHIRE  
YOGHURTS, PRE-PACKED CHEESES  
AND TRAYBAKES**

***OPEN: 9.30am – 5.30pm***

***EVERY DAY***

*Signposted to:*

***Willington Fruit Farm Shop  
WINSORS, CHAPEL LANE,  
WILLINGTON, Nr.KELSALL,  
TARPORLEY, CHESHIRE***

***Tel: 01829 751216***

***www.willingtonfruitfarm.co.uk***

***Wedding Chair Cover Hire***



**£2.50 per Chair Cover**

**We also hire Organza Sashes and Bows.  
We offer a national Delivery & Collection service  
To check availability, and to take advantage of  
our free sample service, please contact us**

**[organsdale.linen@yahoo.co.uk](mailto:organsdale.linen@yahoo.co.uk)**

***Organsdale Linen***

***Kelsall, Cheshire***

***CW6 0SS***

***Telephone 01829 752782***

***<http://organsdale-linen.mysite.orange.co.uk>***

**easylife gm ltd.**

**e-mail: [info@gm.co.uk](mailto:info@gm.co.uk)**

**[www.easylifegm.co.uk](http://www.easylifegm.co.uk)**

**tel: 01606 889833**

**fax: 01606 882090**

**Sales, Spares & Repairs for all leading makes  
Of Garden Machinery.**

**We are located at Dairy House Farm on the corner  
of Farm Road and Chester Road on the A556**

**opposite the Fourways Quarry, Oakmere, CW8 2HB**

**Open Mon -Fri 8.30 – 5.00. Saturdays: Sept – Mar 8.30 – 1.00; Mar – Sept 8.30 – 4.00**

***Call us for any further information or details.***

## Rural Vandalism

In early August many people living in the Black Hill/Stoney Lane area of Delamere were horrified to find that some 50 to 60 yards of the centuries-old sandstone wall that forms the hedgecop near the Old Pale Cottages had been removed.

Left in its place on the torn up grass verge were the unsightly tyre marks of a digger that had evidently been used to wrench the stones from where they had stood undisturbed for so long while the roots of the hawthorn hedge had in places been laid bare by the machine.



What makes this theft particularly worrying is that this could set the pattern for a trend. Sandstone is worth a lot of money today, as anyone who visits local garden centres will know. Ancient sandstone walls are an attractive feature of the Cheshire lanes, especially in our area, and anyone with no respect for the countryside, an eye for a quick profit -and a wagon -could easily be tempted by the example which has been set in Stoney Lane.

## ...and Rural Neglect Rampant Ragwort



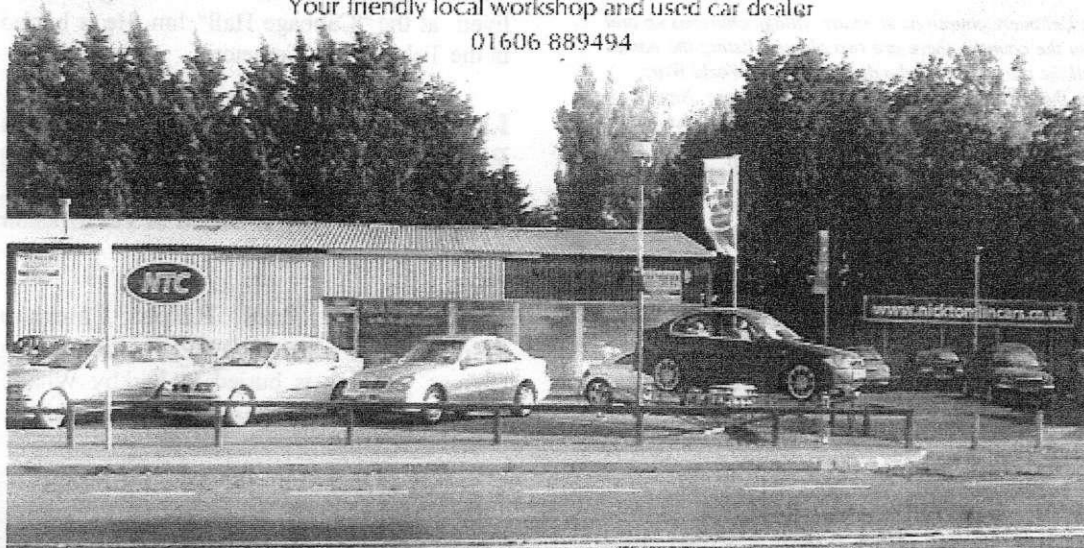
Marefart left to grow unchecked along the footpath near the Roman road and on adjacent forestry land.



### Nick Tomlin Cars

Your friendly local workshop and used car dealer

01606 889494



Specialises in used BMW & Mercedes along with a wide selection of other used vehicles

- Car servicing offered at competitive rates.
- All makes and models catered for.
- Free collection and delivery in the local Oakmere area

### **J.W.Landscapes**

*Jamie Wright*

**BLOCK PAVING**

**FLAGGING**

**GATES**

**DECKING**

**TURFING**

**TREE WORK**

**FREE ESTIMATES**

**RELIABLE SERVICE**

*Little Budworth, Tarporley, Cheshire*

**Tel: 01829 760223 & 07955 219969**

### **SUMMERTREES**

**TEA ROOM**

**Delicious Hot & Cold  
Snacks**

**Home-made Soup  
and Cakes**

**Tues – Thurs 11.00am -5.00pm**

**Sat – Sun 10.30am – 5.00pm**

**Closed Mondays & Fridays  
(Except Bank Holidays)**

*Tirley Lane, Willington, Nr. Tarporley,  
Cheshire CW6 0PF*

**Tel: 01829 751145**

## **Lest We Forget...**

*In Delamere church as in many village churches up and down the country, there are two plaques listing the names of all the parishioners who died in the two World Wars.*

*In the edition of "Delamere & Oakmere News" of October/November 2007 we printed the names and details (such as were available) of the thirty-six men from Delamere and district who fell in the First World War.\**

*Below are the details of those who died in World War Two.*

**Squadron Leader A.T.Smith RAF**  
(died in action 25/7/1940 aged 34) From Kingswood, Squadron Leader Smith was buried in Delamere churchyard on 30<sup>th</sup> July, 1940. His family presented the church with a flag in his memory.

**Senior Commandant Frances Mary Hesther Dixon ATS** (died 2/3/1941 aged 48). The only woman casualty on either Memorial, Senior Commandant Dixon's funeral was at Oxford Crematorium. She was the wife of Commander N.W.Dixon, RN, OBE.

**Sergeant Stanley William Jack English** RAF Volunteer Reserve (died 16/3/1941 aged 23). He is buried at the Keren War Cemetery, Eritrea.

**Charles Ashbrook** (died 1941 aged 61)  
The only civilian casualty on either War Memorial, Mr Ashbrook was killed when a bomb landed near his home at Old Pale Cottages. He was about to join his family, who had already gone down to the air-raid shelters at the school. The Paddock in Stoney Lane stands on the site of his former home.

**Fusilier Thomas Stretch Lancashire**  
Fusiliers (died 12/10/1941 aged 25)  
The son of William and Annie Stretch, he lived in the parish and was a member of the church choir. In one of the letters he wrote to the Rector he said, "I go to church every Sunday. It reminds me of Delamere".  
The colonel of his brigade wrote to Mrs Stretch, "He was my batman and always carried out his duties well and faithfully". He was buried on October 15<sup>th</sup>, 1941 in Delamere Churchyard aged 25 years.

**Captain Richard Neville Kenward Jones MC** Royal Artillery (died 9/4/1942 aged 47) Captain Jones lived in Quarry Lane. He is buried in Helsington (St. John the Divine) Cemetery.

**Trooper Reginald Alfred Hughes** Royal Tank Regiment (died 14/6/1942 age 23) He lived at the "Cabbage Hall" Inn. He is buried in the Tobruk War Cemetery.

**Lance Bombardier John Reuben Rimmer** Royal Field Artillery (died 19/7/1942 aged 28)). Originally from Hoole, Bombardier Rimmer is buried in Tel El Kebir War Cemetery in Egypt.

**Flying-Officer Paul Ralph Emerson Jenkins** RAF (died 6/8/1942). A pilot, Flying Officer Jenkins is buried in Kirkby Wharfe (St. John the Baptist) Churchyard Extension.

**Corporal D.Jones** Royal Engineers  
(died June 1943?)

**Private Jophn Probus Fugler** King's Own Royal Regiment (reported missing on 14/11/1943 aged 36). Until his retirement in 1935 his father was the headmaster of Delamere School. His name appears on the Athens War Memorial.

**Sergeant Frank Sheen** Coldstream Guards (died 14/10/1944 aged 28). Brought up in Delamere the son of Jack and Ada Sheen, Sergeant Sheen was killed in action and is buried in the Overloon War Cemetery, in the Netherlands.

**Lance Sergeant Albert Frederick Ward**  
London Irish Rifles/ Royal Ulster Rifles (died 23/10/1944 aged 21) He lived in Willington and was killed in action. He is buried in the Santerno Valley War Cemetery, Imola, Italy.

*If anyone can add to the above details, please let me know. R*

## **Norley Methodist Church Christmas Tree Festival**

Friday 28<sup>th</sup> November  
6.00 – 9.00pm Lighting-up Ceremony

Saturday 29<sup>th</sup> November  
10.00 am – 5.00pm  
4.0 - 5.0pm The Big Christmas Sing

Sunday 30<sup>th</sup> November  
12.0 – 4.0pm  
4.0pm Closing Service

**Admission Free  
Programmes & Refreshments  
Available**

## Oakmere's Celebrated Centenarian

Doris Pearson was 100 on 19<sup>th</sup> September

Doris was born in Winnington and attended Sir John Deane's School, Northwich. She spent thirty-seven years (from 1929 until 1966) as an infants teacher at Norley C of E Primary School.

In 1938 she married retired marine engineer William Pearson and came to live in Mere Crescent, her home ever since. Twelve years earlier her husband had bought a new Vauxhall Princeton 14/40 Tourer and the car became Doris's on his death in 1963. It is still in her possession to this day, surely the longest any car can have remained in one family in the whole of automotive history.

Both car and driver have become celebrities in the world of Vintage motoring; in fact Doris

continued driving the car until her ninetieth year and for twenty-four years she held a picnic, with the car as centrepiece, at the VSCC summer competition races at Oulton Park.

Doris held a 100<sup>th</sup> birthday lunch at the Fishpool for close friends and the postman



made a special visit to where she was dining to deliver a birthday card from the Queen, the highlight of the day.

Visiting Doris a few days later was for me a memorable experience. I hadn't seen her for many years, but when asked if she remembered me she said, "Of course I can! I remember him when he was little". There didn't seem much that she couldn't remember.

Though, understandably, a little frail, she was as full of mental energy and

vigour as someone half her age.

The house was full of flowers and cards from friends and well-wishers and there in pride of place on the mantelpiece was the card from the Queen.

**Doris cuts the cake** Photograph courtesy of Philip Wood (Photographer)

### Delamere School

#### Letter from the Retiring Chairman of the Governors

*I have been privileged to see a major transformation right in the centre of our local community. Last year I was asked to do a year's stint as Chairman of Governors at Delamere County Primary School. The school was under threat of closure under a local authority review, mainly because we are a small school. That smallness was the very reason I was delighted to get involved. Good small schools are a major asset, not a liability. Children benefit from the small classes and intimate relaxed atmosphere – individual attention is made an everyday feature. I know from personal experience how much small schools can help look after children: several of the foster children Alex and I have cared for over the years attended Delamere School and we watched them flourish.*

*In the summer Cheshire's Director of Education, Joan Feenan, attended our end-of-term performance. Everyone there could feel the buzz, experience the excitement and see some of the extra activities we have added to our curriculum under what we call our Creativity Project.*

*My year is now over and I've handed the Chairmanship to Craig Stockton, who has been giving me great support as my Vice Chairman.*

*When I was preparing for the last meeting, I began to think why we've achieved so much in a short time and I came to the conclusion it's partly because we passionately believe in small schools, but also because we have given our Headmaster, Steve Docking, the freedom to do his job. We recognised that you can't run a school simply by following a pile of policies – box-ticking doesn't help teach children and it often gets in the way.*

*By giving Steve the chance to spend less time worrying about paperwork and more time looking after the children and their education, he and his team are well on the way to creating a centre of excellence of which everyone in Delamere should be justly proud. The school's growing reputation is certainly being recognised, because this term we have welcomed more new pupils than anyone can remember.*

*John Timpson.*

Everyone who has worked with John over the past year would, I am sure, like to join me in thanking him for the quality of his leadership and his enthusiasm and commitment to the school

R.



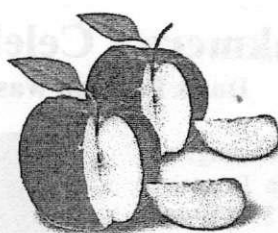
## ACKOMATICS



WASHING MACHINES,  
TUMBLE DRYERS  
&  
DISHWASHER REPAIRS

*Also New & Re-conditioned  
Machines available for sale or  
rental  
Reasonable Rates*

Call Paul on 07976 969223  
Or 01829 760355  
Cotebrook, Tarporley



## Cheshire Apple Juice

Cheshire's most pure and natural apple juice  
made from the finest quality apples grown on  
rich Cheshire Soils.

Ideal for a breakfast juice, or an aperitif  
at any time of the day or night.

Choose from over 10 varieties  
of apple juice all with their own individual  
character and flavour.

No artificial colourings or preservatives,  
no sugar is added.

Grown, Pressed & Bottled at Eddisbury Fruit Farm,  
Kelsall, Cheshire. Telephone 01829 751300  
[www.eddisbury.co.uk](http://www.eddisbury.co.uk)



## VALE ROYAL FARMERS' MARKET

EDDISBURY FRUIT FARM  
YELD LANE, KELSALL

EVERY THIRD SATURDAY  
OF THE MONTH  
26 Stalls Local Food & Craft

18<sup>th</sup> October, 2008  
16<sup>th</sup> November, 2008  
20<sup>th</sup> December, 2008



**P&D (Executive)**



### Travel

#### Little Budworth

- Airport Service
- Contract Work
- Private Parties
- Golf Trips
- Plenty of Luggage Room
- 8 Seat Max
- Wide Seat
- Electric or Standard  
Wheelchair Access (Auto Lift)
- DVD and CD
- Fridge on Request

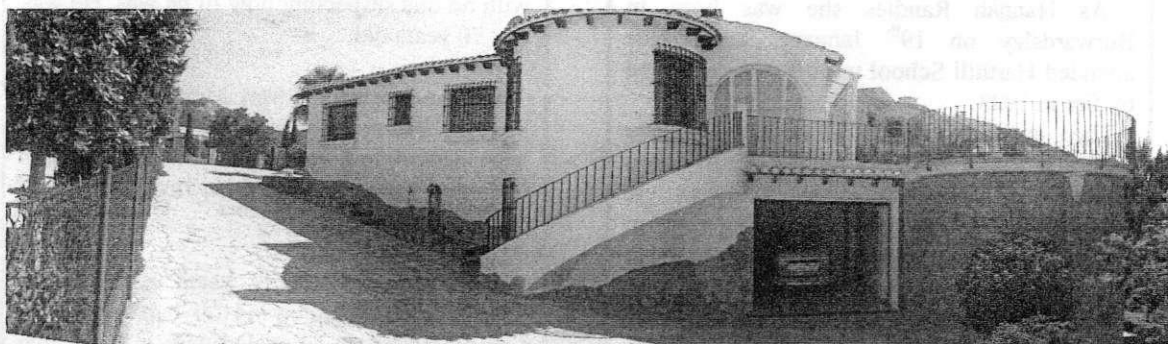


Tel: 01829 760445

Mobile: 07889 081639



## Luxury Villa



**SPANISH VILLA** to rent in Costa Blanca, Spain. Spectacular views, private pool (can be isolated from children), private gardens, lovely beaches, golf & mountains. 3 bedrooms, sleeps 6.

[www.villapattinson.co.uk](http://www.villapattinson.co.uk)

or ring 01829 751116 / 07970 062667

### Riley IT Services

#### IT Services for home & business

*For all your IT needs*

Broadband & email problems

Upgrades

Virus, spam & spy-ware removal & prevention

Hardware & software problems

VPNs, Wired & Wireless networks

Available 7 days a week

Fully insured

Competitive rates

**Jeremy Riley B.Eng (Hons)**

0797 3864465 or 01928 726525

[riley.it.services@gmail.com](mailto:riley.it.services@gmail.com)

## THIS

## SPACE TO LET

Advertise here and reach a wide and very discerning reading public.

Rates:  $\frac{1}{4}$  page = £6.50

$\frac{1}{2}$  page = £12.50

whole page = £25

per issue.

*Delamere & Oakmere News*

comes out every other month.

Copy for next issue due by

**16<sup>th</sup> November**

See p2 for contact details.



### **Mrs. Hannah Gregory**

One of Delamere's oldest citizens Hannah Gregory, known to everyone as 'Cis', died on 1<sup>st</sup> July.. She was 98.

As Hannah Randles she was born in Burwardsley on 19<sup>th</sup> January, 1910. She attended Harthill School until it was destroyed by fire in 1923.

Then, at the age of 13, she went into service with the Duke of Westminster at Saighton Grange and one year later she was the youngest servant to travel by special train to London for the wedding of Lady Ursula Grosvenor.

She remained in service until 1935 when she married Noel Gregory, from Delamere. Ernie Nixon was Noel's best man.

In 1936 Noel and Cis's first child, a daughter, was born; sadly she died two years later. Now living at 13 Stoney Lane Cis became caretaker at Delamere School and in 1939 their eldest son, Charlie, was born. He was followed by David in 1941 and Geoff in 1944.

In 1946 the family moved to Yonder Bungalow on Abbey Hill, which became home to a succession of foster children, followed a few years later by an adopted daughter, Christine.

On leaving Yonder Bungalow the family moved to Station Road where their home housed the surgery for Dr Rowlands.

After Station Road she spent the last twenty years of her life in a bungalow in Frith Avenue close to where her son David still lives.

An active and well-known member of the Delamere community for over seventy years, Cis loved gardening, keeping livestock including pigs and even lambs, was a member of the Golden Age and raised money by crocheting items in support of Tarporley Hospital.

It takes a special kind of person to take on foster children, let alone adopt a child, and it is a fitting tribute to Mrs Gregory and the affection she both gave and inspired that three of those children she had fostered over half a century earlier came to her funeral. She was cremated at Walton Lea and her ashes laid at the family grave in Tarporley.

### **Beware of Strangers Offering Help**

There has been a number of instances of a man calling on houses in Station Road offering to do gardening work. It is believed that he may be the person who was recently given an ASBO for offences committed in connexion with similar activity. **On no account accept offers of help from anyone calling like this.**

Phone the police on 0845 458 0000 if you witness any such behaviour.

### **David Morrey**

People throughout the area were shocked to learn of David's death on 1<sup>st</sup> September. He had gone into hospital only a day or two earlier with no one suspecting how ill he was. He was just 70 years old.

The son of Ellis and May Morrey, David was born in 1938 at the family home which, until it was demolished to allow for the by-pass widening, stood on the main road in front of the family nursery.

David spent his early years at Delamere School before going on to Hollybank School in Chester, to which he cycled daily. At the age of fifteen he started work at the nursery to which, national service apart, he was to devote the rest of his life.

Returning from service in the RAF in Germany, where he became a radar operator, he married at Delamere Church. He and Doreen, his wife, had two children, Alison, born in 1964, and Neil seven years later.

The crowds who attended his funeral on 8<sup>th</sup> September bore testimony to David's standing in Delamere and throughout the district. Cars were parked on both sides of the main road almost as far as the school and the church was full to overflowing forty minutes before the service began.

A true family man, David was not only loved by his family but held in deep affection by the many people who had worked for him – some for many years – as well as being widely admired for his expertise in the world of horticulture. He will be greatly missed.

All our sympathies go out to Alison and Neil and their families. Delamere has lost one of its most respected and popular personalities.

### **PLEASE, PLEASE HAVE YOU SEEN OUR DOG?**

Our Scottish Terrier and Springer Spaniel went missing from our home in the **Delamere Forest Area** on Thursday morning 14<sup>th</sup> August 08.

The Spaniel came home at 6pm the same night, but

### **Our Scottish Terrier is STILL MISSING**

The dog looks like a typical "Scottie", except that it has one ear up and the other down!

If you have *any* information, please telephone:

Katherine MacVicker 01606 883652

David MacVicker 07974 950438

Helen MacVicker 07986 877390

**ASH-WORTH TIME BANK  
DELAMERE/OAKMERE/CUDDINGTON**

Are you interested in:

- Sharing some of your time with others?
- Saving energy costs in your home?
- Learning new skills?
- New social groups and events in your area?
- Making new friends?
- Being part of a village networking and help scheme?

*Ash-worth Time Bank helps people link together in 11 Cheshire villages. Membership is free, as are all services. We are a registered charity and Big Lottery Funded. Being a member is like having an insurance policy – you never know when you may need help with all sorts of things – lifts, house-sitting, companionship, shopping, gardening, dog walking, computer help – the list is really endless!*

.....  
**YES, I WOULD LIKE TO KNOW MORE ABOUT YOUR SERVICES.  
PLEASE SEND ME FURTHER INFORMATION.**

NAME.....

ADDRESS.....

Tel: .....

Please return to Membership Information, Ash-worth Time Bank, 1<sup>st</sup> Floor, Post Office, Kelsall Road, Ashton Hayes CH3 8BH.  
Tel: Susan or Caroline on 01829 751398 or email [ash-worthtime@hotmail.co.uk](mailto:ash-worthtime@hotmail.co.uk)  
ASH-WORTH TIME BANK – LINKING PEOPLE TOGETHER IN RURAL CHESHIRE

**ASH-WORTH TIME BANK EVENTS UPDATE**

**Covering: Delamere, Cuddington, Kingsley, Norley, Crowton, Oakmere, Kelsall, Tarvin, Great Barrow, Ashton Hayes, Mouldsworth, Manley**

*Ash-worth Time Bank was formed in 2003 to encourage local rural people to share their time and skills with others. We also organise social groups, coffee mornings, reminiscing, walking, reading, art and holistic therapy events in the above areas. Membership is free as are all services.*

*Please phone Susan or Caroline on 01829 751398  
or email for further information.*

**Kingsley Time Bank Inter Village Quiz: Friday 10<sup>th</sup> October, Kingsley Community Centre 7pm – 10.30pm**  
This is our 3<sup>rd</sup> Time Bank Quiz; we are hoping to get a good selection of people from our Time Bank villages. A trophy will be awarded to the winning team. Will it be Kingsley, the host village? Hope you want to put a team together (5 to 8 people per team. Why not get some friends together?. There will be a hot pot supper, prize raffle and a fully licensed bar. Phone Caroline on 01829 751398 to book tickets.

**Table Top Sale/ Coffee Morning: Saturday 25<sup>th</sup> October 10.30am – 12.30, Kingsley Village Institute, Top Road.** Tickets £5 each – and they're going fast. To reserve a table or help on the day (bake a cake? etc) phone susan on 01829 751398.

**Christmas Craft Fair – Kelsall Community Centre: Saturday 29<sup>th</sup> November 10.30am - 4.00pm.** 30 CRAFT STALLS, BOOK SIGNING BY LOCAL ARTIST, REFRESHMENTS, SANTA CLAUS, FACE PAINTING! Tickets 50p on door. Phone Susan on 01829 751398 for further information.

**New Craft Course in Kingsley:** We now have a tutor who will organise a Craft Class covering: Feltnaking, Textiles, Embroidery (including machine), Silk Painting, & Handmade Books. If you would like to attend such a course in Kingsley or Delamere (we need a minimum of 10 people), please contact our office on 01829 751398 to register your interest.

**Kingsley Keep Fit:** Contact Maureen Chesmore on 01928 787055 to register your interest. Kingsley Village each Thursday 2.45 - 3.45 pm./

## The QUEST Ends

Sometimes we search for things that have been there all along. One of the key things in metal detecting is never to throw anything away because you never know. One such item a small smooth disc about the size of a 5p sat in a bowl on a shelf for many months and nearly went in the bin on more than one occasion. It eventually ended up in a bag of bits that found its way to Liverpool Museum. Some time later I received a telephone call from them asking where I had found the item. They then informed me the worn disc was in fact a Mark Anthony silver Denarius (Galley Type) minted in Patraea in Egypt (32-31 BC).

After the assassination of Julius Caesar in 44BC a power vacuum existed and eventually three parties agreed to share power, Octavian, Lepidus and Mark Anthony, the Triumvirate. Lepidus took control of the western provinces, Octavian stayed in Italy and Mark Anthony went to Egypt where he met Cleopatra in 41BC. The usual political in fighting went on for many years and by 32BC another civil war was beginning. These Galley type Denarius coins were used by Mark Anthony to pay the legions who were loyal to him with his fight against Octavian. In Sept 31 BC the great sea battle of Actium took place and Anthony and Cleopatra's navy was destroyed by Octavian's Admiral Agrippa. Anthony and Cleopatra fled to Egypt and the



following year Octavian invaded Egypt. With nothing else to live for Anthony committed suicide and a few days later Cleopatra killed herself.

Below is a copy of one of the coins in fine condition. Unfortunately the original find is too badly worn to be shown. On one side is a Roman Galley and on the reverse would have been the details of the legion the coins were issued to. These go from the 1<sup>st</sup> to the 23<sup>rd</sup> legion and were minted by the thousands. So how did the one I found end up in a field in Delamere when you take into account it was over 70 years old before the Romans invaded Britain and it travelled all the way from Egypt? Well mostly they turn up worn smooth as they stayed in use for a couple of hundred years.

Mark Anthony was a well-liked general by the legions and many of the coins were kept as keepsakes or lucky charms and handed down. One of the Legions was the 20<sup>th</sup> which was the main legion in Chester for many decades.

That's the thing about this hobby: you can speculate as to how it travelled here, how was it lost. To be the first to pick up and handle a coin that was lost 2,000 years ago is quite an experience but to eventually end the Quest with such history attached is unbelievable.

*Alan Knowles.*

### Delamere School Diary

Mon, 6<sup>th</sup> Oct. ~ Harvest Festival Service at Church 9.00am  
Thurs, 9<sup>th</sup> Oct. ~ Julie Mitchell (Artist) in school .All day.  
" " ~ Bags2School Day  
" " ~ Friends of Delamere School 3.30pm  
Thurs, 16<sup>th</sup> Oct ~ **Open Afternoon 1.00 – 3.00pm**  
" " ~ Dance Evening at Tarporley H.S. 6pm  
Tues, 21<sup>st</sup> Oct ~ Parents' Evening from 3.30pm  
Thurs, 23<sup>rd</sup> Oct ~ Football Tournament at Westminster Park School, Chester 1.00 – 3.00pm  
Mon 27<sup>th</sup> Oct – Fri 31<sup>st</sup> Oct ~ HALF TERM  
Tues, 4<sup>th</sup> Nov ~ Textile Artist in school. All day.  
Thurs, 6<sup>th</sup> Nov ~ Cashmere & Cotton Evening (Friends of Delamere School)  
24<sup>th</sup> – 28<sup>th</sup> November ~ Book Week.  
Mon, 24<sup>th</sup> Nov ~ David Horner (Poet) in school All day.  
Sat, 29<sup>th</sup> Nov ~ **Christmas Fair** 10.00 – 12.00  
Thurs, 11<sup>th</sup> Dec ~ Switch-on of Christmas Tree Lights 6pm  
Wed, 17<sup>th</sup> Dec ~ Christmas Production. 2.00pm & 6.00pm  
Thurs, 18<sup>th</sup> Dec ~ *The Wizard of Oz* at The Lowry 10.00am  
Look round The Lowry 2.00pm  
Fri, 19<sup>th</sup> Dec ~ **END OF TERM**  
**The School is planning to start Table Tennis coaching in October. If anyone knows of any tables we could beg or borrow, please contact the school on 01244 981145.**

### Net work Gloria: Parents for Parents

We are not holding a Barn Dance this autumn; it costs a great deal to hire a band and, based on recent experience, we cannot guarantee attracting enough support even to cover our costs. This is a pity, since all who *have* come long have thoroughly enjoyed the evening. Barn Dance are great fun and a great way for people in the village to get together.

We hope to start these events again some time in the future.

Thanks to all the donations we have received this year we have now been able to send wheelchairs, an electric mattress and other badly needed items to our special needs families in Romania.

*Gloria Ackerley.*

**Wanted:** Does anyone know of a house for rent (even on a temporary basis) somewhere in the Frodsham/Runcorn area? Ring 01829 752723 if you can help.

## Travel Information

### **Trains from 10<sup>th</sup> December**

**From Delamere to Manchester**

*Return Fare ~ £10.60. Railcard £7.00*

*Off-peak Returns ~ £8.40-Railcard ~ £5.55*

*Mon to Fri (Sat ~some variations)*

am: 6.09 7.09 7.38 8.21 10.17 11.17

pm: 12.17 1.17 2.17 3.19 4.14 5.17

6.12 7.12 8.12 9.15 11.00

Delamere – Manchester

c.75minutes

### **From Delamere to Chester**

*Return Fare ~ £6.10 Railcard. ~ £4.05*

*Off-peak Returns ~ £4.70 Railcard £3.10*

*Mon. to Fri (Sat – some variations)*

am:12.18 7.44 8.47 10.31 11.31

pm:12.31 1.31.2.31. 3.31 4.31 5.31 6.06

6.31.7.01 8.32 9.31 10.31 11.31

Cuddington to Manchester: 4 mins. later

Cuddington to Chester: 5 mins.earlier.

Off-peak travel from 9.30am

### **GHA Coaches**

*[Route 82] Mon – Sat ~ to  
Northwich*

opp. Abbey Arms **8.00am.** Then **8.12  
am** and 12 past every hour until **4.12pm**

Last buses: **5.17 & 6.22pm**

*[Route 82] Mon – Sat ~ to Chester*

opp. Abbey Arms **7.40am.** Then **9.00am**  
and every hour until **5.00pm.** Last bus  
**6.05pm.**

Buses leave Chester **32 minutes** and  
Northwich **20 minutes** before the above  
times.

Adult single Delamere to Northwich  
/Chester £2.60

Adult return Delamere to

Northwich/Chester £3.70

Child Single “ “ £1.55

Child Return “ “ £2.20

Bus passes valid after 9.30am

*[Route 230] Mon – Fri ~ to Winsford*

Top End of Kelsall : 8.05am,9.50am,  
11.20am, 1.20pm & 3.25pm

Dep. Winsford

8.30am,10.15am,12.00pm,2.00pm &  
4.35pm

*[Route X20 ]Tues,Thur,Sat ~ to*

*Cheshire Oaks.* Top End of Kelsall:  
9.44am

### **Rural Bus Service**

**01606 871990**

**To book a journey please ring between 10.00 &  
11.30 am the day before you wish to travel.**

Fare: £2.40 each way/ £1.20 concessionary.

Free Travel 9.30 – 4.00 on production of bus pass.

#### **Monday**

**9.00am** Cote Brook, **Oakmere**, L.Budworth, Utkinton, Tarporley,  
**Delamere to Winsford.** Return 12.00pm

**10.30am** Cote Brook, **Oakmere**, Utkinton, L.Budworth, Utkinton,  
Tarporley, **Delamere to Northwich.** Return 1.30 pm

12.00 Return from Winsford; 1.30 Return from Northwich.

#### **Tuesday**

**9.00am** Crowton, Kingsley, Acton Bridge,Norley, **Delamere to  
Winsford** Return 12.00pm

**12.30pm** Crowton, Acton Bridge,Kingsley, Norley, **Delamere to  
Northwich** Return 3.00pm

#### **Wednesday**

**9.00am** Cote Brook, **Oakmere**, L.Budworth, Utkinton,Tarporley,  
**Delamere to Northwich**  
Return 12.30pm

**1.30pm** Tarporley, **Oakmere,Delamere**, Utkinton, L.Budworth,Cote  
Brook **to Winsford**  
Return 3.30pm

#### **Thursday [Bus 1]**

**9.00am** Kingsley, **Delamere**, Norley, Crowton, Acton Bridge **to  
Northwich.** Return 11.30am

### **Other Routes**

From Willington Corner ~ **to Tarporley** & **Bunbury** (via  
Beeston & Peckforton):

11.47am, 5.01pm

From Willington Corner ~ **to Chester:**

9.33am, 10.32am, 12.43pm, 1.02pm.

*Vale Royal's Concessionary Travel Scheme  
for Persons aged 60 & over and  
Disabled People*

**OLD PASSES EXPIRED ON  
31<sup>ST</sup> MARCH!**

***Bus Pass:* Free Travel after 9.30am Mondays to  
Fridays and any time at weekends; half fare before  
9.30am Mondays to Fridays.**

***Railcard:* Cost - £2.50 for 12 months – gives one third  
off fares for most rail services.**

***Bus Pass Forms, to be returned with proof of age,  
address and passport-size photographs, available  
from::***

***Wyvern House, Winsford (01606 867928) or  
Castle Park, Frodsham (01928 734440) or  
Information Centre, 1 The Arcade, Northwich  
(01606 353500)***

Usual disclaimers apply to this information.

### **Philip Wood (Milk Dairy and Photographer).**

Some 33 years ago I started Woods Dairy delivering Milk and Dairy produce in the villages between Warrington and Northwich. My sons David and Christopher work with me in the business and are now taking most of the responsibility, and doing most of the work, in the Dairy. We are all committed to giving you the best possible service we can for many years to come.

Please give me a ring if you would like us to deliver to you My son Chris delivers in this area and he comes on a Tuesday Thursday and Saturday.

I have always been interested in photography as a hobby and in 2005 started training as a Wedding and Portrait photographer.

I completed my training last year and was accepted as a member of THE SOCIETY OF WEDDING AND PORTRAIT PHOTOGRAPHERS and am now offering my services to you.

My area of interest and expertise is ( Picturing People- Natures Finest Subject) and I split my work into the following categories. I have both training and experience in all these areas.

1. Weddings
2. Studio Portraits specialising in Children's Portraits. My studio is a friendly place and my wife Irene and myself make sure the children are happy and settled before I take the photographs. Usually they are not ready to go home when we finish as they are still happily playing with Tigger Teddy and friends..
3. Location Portraits (Creating Studio conditions in your own home)
4. Passport Photos
5. Celebrations of Birthdays, Christenings Etc. (Parties)

I hope you will bear me in mind if you need any help to capture those important occasions, which are your memories of the future.

Please have a look at my Website: [www.philsweddingphotos.com](http://www.philsweddingphotos.com)

Or phone me on 01606851240 for more information.

### **GRANDMA'S CHRISTMAS SPECIAL**

Studio Portrait shoot with a 10" x 8" framed portrait and six 7" x 5" prints for only £ 50-00

### **A BLAST FROM THE PAST**

Why not have that treasured old photograph digitally enhanced, enlarged and framed as a Christmas gift for someone special it may well cost less than you think. Please ask me for a Quote.

### **Mrs Doris Pearson 100 years young on Friday 19<sup>th</sup> Sept.**

I was honoured to spend several hours with Doris on her big day to record her special day for family, friends and the press. Congratulations Doris.