

Delamere and Oakmere News

Number 2

August 2005

GARDEN PARTY SUCCESS

Despite the change from the traditional date and gloomy predictions about the weather, the Delamere Church Garden Party held at the Fishpool on Saturday 25th June was an undoubted success.

The occasion had been widely publicised. Every corner, every junction in mid-Cheshire, or so it seemed, had its bright red poster advertising the event. Attendance was certainly up on last year. There is no doubt that the Football Tournament, attracting eight teams, plus supporting families, did a great deal to boost attendance. The knock-out competition, efficiently organised as usual, was won by Bunbury Cubs, who beat Mickle Trafford 1-0 in the final.

When the takings from the various stalls were collected and added up at the end of the day they came to a best ever £2,400 – just reward for all those people who had put so much effort into the occasion. Next year the Garden Party will be on Saturday 1st July – at the Fishpool.

Sherwood Forest?.....No, Delamere Delamere School's End-of-Year Musical



For their end-of-year entertainment all Delamere School's pupils, over sixty of them, took part in a delightful production of *Hoodwinked*, a musical version of Robin Hood's outwitting of the wicked Sheriff of Nottingham. Performed at the end of the school playing field, with its backdrop of trees, the play had a perfect setting. The whole entertainment was a tribute to the pupils who acted and sang so well, to the staff and helpers who trained them and to the mums who made the costumes. What better setting for a Robin Hood play? What better school?

Thanks to all the readers who contacted me after the first edition of the NEWS. It was most encouraging to hear that the newsletter had generally been well received.

There were several offers of help with delivery; these will all be taken up, but there are still some areas where we could do with help. These include all homes bordering the three main roads: A556 from the lights at Kelsall to the Oakmere lights; the A54 from Organsdale to Sandy Brow and the A49 from the Oakmere lights to *The Fox and Barrel* (right hand side going towards Cote Brook only); Crabtree Green and Hogshead Lane; Overdale Lane; Racecourse Lane and Saddlers Lane. Many thanks to all who have helped with delivery so far.

* * * * *

One person rang to say that Arriva buses leave Chester and Northwich at 25 minutes past the hour, not 5 past. Apologies if you were kept waiting.

There have also been a few very minor changes to the railway timetable owing to the summer schedule (see back page).

* * * * *

Rosemary Oulton of the Ridge telephoned to say that **Black Hill** is so called because, before it was made up, it had a dark cinder surface. Rosemary's uncle, who was there when it was first given a tarmac surface, gave the same explanation - so it must be true!

* * * * *

Black Bank, as any "firbob" knows, and as several people got in touch to confirm, is the short hill on the A54 just after the end of Stoney Lane as you head towards the Fishpool. David Rutter of Rectory Farm tells me that the field next to it, when it was part of Rectory Farm, was known as Black Bank Field because the soil there was very dark, unlike that of the neighbouring fields. Apparently years ago gipsies used to camp on the patch of waste at the bottom of the hill. I can remember them in later years stopping on the short stretch of Stoney Lane opposite the School. Up to five caravans would spend a few days there and then depart, the only sign of their stay being the

remains of the fires that they'd cooked on.

When David told me the name of one of his fields I was reminded that all fields have (or used to have) names. The changing nature of so many local farms and their loss of identity means that many field names are in danger of disappearing. I have a map of the Old Pale with all the field names on it. Is it worth trying to make a collection of these before they are lost for ever?

* * * * *

Apologies to Church Warden David Unsworth for misprinting his name in the June edition. My typing finger must have slipped. They say some people use several fingers and don't even look at the keyboard - but that's just showing off, like riding a bike with your hands in your pockets. Apologies also to Councillor Cunningham (not Cunningham) for getting his name wrong.

Delamere or Kelsall?

Is it just me or do other people in the Tarporley postal area of Delamere get annoyed at being told they live in Kelsall? Now I've nothing against Kelsall or its inhabitants, but I don't like getting letters (usually bills, or junk mail to make matters even worse) that entirely ignore the existence of Delamere. I reckon there must be about eighty addresses that suffer this indignity. Can anything be done about it?

Our Two Parish Councils

The newly elected Chairman of **Delamere Parish Council** is Alan Knowles. The Vice-Chairman is Monica Haworth. The next monthly meeting will be held at the Parish Room at 7.30pm on 25th July.

Oakmere Parish Council

Eric Hodgson was elected Chairman at the AGM in May. The next monthly meeting will be on a date to be announced in September.

News from Delamere P.C.

A set of goalposts has been installed on the field at the end of Frith Avenue.

New benches have been put on the stretch of land between Frith Avenue and the Station.

Cheshire County Council are to install Flashing Lights on the A556 at the approaches to Delamere School within the next three months.

Volunteer Homewatch Co-ordinators are being sought for: Delamere Grove, Organsdale, Saddlers Lane and Willington Road. Anyone prepared to help please contact J.Gladstone (01829 752651).

* * * * *

Vale Royal Borough Council have announced a RURAL DELIVERY PROGRAMME

£2.4 million has been set aside over the next 2 years to meet the following priorities:

Community Safety
Healthier Communities
Rural Economy
Environment
Children & Young People
Village Halls & Community Buildings
Services for Older People

Anyone interest in finding out more should contact Greg Scott on 01606 867519.

We were sorry to hear news of the death in June of Lily Page, shortly before her 102nd birthday. Until recent years a regular attender at St.Peter's Church, she was one of the founder members of Delamere W.I. in 1941.

If you have any suggestions/ comments / complaints about the NEWS, please get in touch. Contact me on:

Tel: 01829 752723

Or e-mail:

robin.ackerley@btinternet.com

Be one of the first to contribute to a letters page in the October issue.

Deadline for copy: 15th

September

And do please send me any items that might be of interest.

SWP ELECTRICS
TARPORLEY

SOCKETS LIGHTS REWIRES

*

NO JOB TOO SMALL WE DO THEM ALL

*

PORTABLE APPLIANCE TESTING (PAT)

*

PROMPT RELIABLE SERVICE

*

FREE ESTIMATES

*

REFERENCES AVAILABLE

*

Telephone 01829 781736 or 01928 740237

Stephen Warburton

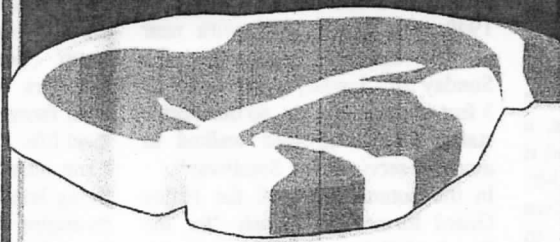
SWP Electrics

Common Lane

Duddon

Tarporley

**OUR REPUTATION
IS AT STEAK!**



DUTTON'S
Quality Meats

4a Church St, Kelsall

Opp. Dr Surgery

01829 751355



Sixty Years Ago World War Two Ended

Looking back it's hard to believe that World War Two should have had any serious impact on a quiet and peaceful area of Cheshire, but Delamere people who were around at the time can tell a different story.

There were, of course, the inevitable casualties of war. A plaque inside the church commemorates the 13 Delamere parishioners who lost their lives, not as many as the 36 of World War One, but still a significant number out of a small population.

The first name on the memorial is that of a civilian, Charles Ashbrook, who was killed in November 1940 when his home was destroyed by a bomb.

Enemy bombers flew over Delamere on their way to attack the docks at Liverpool. There was an anti-aircraft battery on Eddisbury Hill and someone in the War Ministry had the bright idea of putting decoy lights on the hillside. The result was many bombs landed in the area. On one particularly heavy night five hundred incendiaries and a land mine allegedly fell in the large field behind the school.

Three air-raid shelters were built in the field just beyond the school wall (where the playing field is today). When the siren sounded at Northwich local people gathered in the shelters until the all-clear was sounded. On the night of the tragedy Mr. Ashbrook had told his family he would follow them down Stoney Lane from his home (one of two cottages where The Paddock now stands) when he had changed his shoes. When he failed to arrive, a party went up to his home to find it had received a direct hit. Today Mr. Ashbrook's two grandsons live only a short distance away in Watling Drive.

As was the case throughout the country there was a strong community spirit in the parish. There were numerous fund-raising activities to help the war effort and in August 1940 a National Savings Group was formed (I still have the ledger recording the savings, as my parents kept the records). In November it was announced that the Fishpool Spitfire Fund had raised £127 in only three weeks. In the May 1941 Parish Magazine the Rector was able to announce that

the "miraculous figure" of £35,000 had been raised for the War Weapons Campaign, an astonishing figure even by today's standards, and that Delamere held the record for a Country district in Cheshire.

The Rector, George Payne, kept a careful note of all parishioners serving in the Armed Forces. He would, of course, have known them all personally. In the February 1940 Magazine he recorded that 15 parishioners were serving; by September the number had increased to 34 and by December 1941 no fewer than 73 Delamere men and women were on active service. Many more were to follow over the ensuing years.

There were some poignant stories. Early in 1940 Flight Lieutenant Andrew Smith of New Pale Lodge had presented an RAF flag to the church. In the July Magazine he was congratulated on his promotion to Squadron Leader. On 27th July he was killed in action at the age of 33. At the end of March 1940 the Rector presented Tom Stretch with a fountain pen and a case of hair brushes, a present from the choir he had been a member of for many years before he left on active service. In a subsequent letter to the Rector Tom wrote, "I go to Church every Sunday. It reminds me of being in the Choir at Delamere".

The death of Fusilier Stretch was reported in the Parish Magazine of November 1941.

There were hardships at home as well, not just the blackout and food shortages to contend with. January 1940 was bitterly cold with near record low temperatures. On Sunday 28th January there was 2 or 3 feet of snow and yet, so the Rector stated, "three heroines walked to morning service from Sandiway".

In the autumn of 1940 the Home Guard formed a branch "for the Parish of Delamere (which includes the Townships of Oakmere and Eddisbury)". On October 4th a Whist Drive and Dance was held in the school to raise funds for the new branch.

There were lighter moments. One story I've been trying to confirm but I was assured was true by my parents concerned the new Home Guard. In a top level military exercise the local branch was detailed to hold Delamere Station against an invasion by the Norley Home Guard. All surrounding parts of the forest were put under

surveillance as was Station Road. No stone was left unturned. Unfortunately Delamere Home Guard failed to take the deviousness of their near neighbours into account. Norley came in by train and took the station without encountering any resistance.

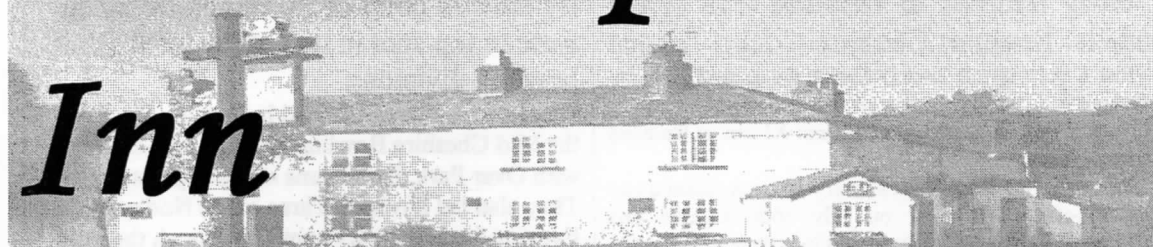
Advertising a forthcoming Rummage Sale in May 1940 the Rector wrote "The sale was so brisk last year that practically everything was sold including the Rector's hat which was almost new and not for sale, and fetched sixpence". His monthly parish newsletters at this dark time were not only characteristically humorous but often a source of inspiration. In July 1940, not long after the fall of Paris, he concluded his letter, *Every morning we can hear in the Broadcast just before 8 am some words of cheer and a thought for the day with the title "Lift up your hearts". That means we must never get depressed or lose our faith or confidence in the ultimate achievement of justice, liberty and truth. To lose heart is to give a gift to the enemy which he is longing to receive. Our soldiers, sailors and airmen have displayed matchless courage and resolution, and we must show the same spirit. The price of victory is the courage to endure, and the secret of success is that unending and dogged resistance which is the tradition of our race.*

In the latter years of the war the Lancashire Fusiliers left the artillery battery on land at Eddisbury Hill Farm, just above Rectory Farm and the site became a prisoner of war camp housing mainly Italian prisoners. Many of them worked on local farms and settled in happily to local life.

I can clearly remember the night a flying bomb passed over Delamere, its engine cutting near the Old Pale. It crashed on some greenhouses at the bottom of Kelsall, fortunately without causing any casualties.

One of the most memorable events in Delamere was the *Salute the Soldier Week* which ran from 20th to 27th May 1944. In the October edition there will be a full account of the activities that took place during the week. If any readers have recollections of this and/or any other wartime memories, please get in touch. In a few years this important part of our village history will be forgotten unless we record it now.

The Fishpool Inn



Traditional Ales

Garden

**Open: 11.30 – 3.00 & 5.30 – 11.00 Monday to Friday
All Day Saturday & Sunday**

Food Served All Day at Weekends.

Senior Citizens Menus Available ~ £5.95

Telephone: 01606 889576

DELAMERE STORES

**13 Station Road, Delamere, Northwich, Cheshire CW8 2HU
Tel: 01606 882226**



**A TRADITIONAL VILLAGE STORE AND POST OFFICE
OFFERING AN EXTENSIVE RANGE OF FRESH PRODUCE/WINES
AND BEERS. THE STORE HAS RECENTLY EXPANDED AND
NOW OFFERS A FANTASTIC RANGE OF DELICATESSEN
PRODUCTS, INCLUDING AN IN-STORE BAKERY AND A FULL
MENU OF FRESH HAND-MADE SANDWICHES WHICH ARE
PREPARED AS YOU WAIT.**

COME AND VISIT US.

WE ARE OPEN 6AM – 6PM DAILY & 7AM – 4PM ON SUNDAYS

Oakmere at the Top

Newly returned to Division One of the Meller Braggins Cheshire Cricket League after a year spent languishing in the second division, Oakmere C.C. have wasted no time making their presence felt. By early July the First XI was at the head of the table.

Then came a setback with a heavy 131-run defeat away to mid-table Wilmslow on July 16th. Despite this Oakmere are still well placed and in with a great chance of their first-ever Division One title.

Matching their achievements are the **Second XI**, who are leading the Second XI Division A.

Meanwhile the **Ladies XI** are vying for top spot in the Jacobs Cheshire Women's League with Boughton Hall. Their cause was helped by a 10-wicket win against Oxtown on 16th July. Having dismissed Oxtown for 54 openers **Helen Waltier** and county player **Shami Ahmed** knocked off the runs without loss, Helen being voted Man of the Match by Oxtown thanks to two excellent catches.

County Venue

Overdale Lane was the home for a representative match on Thursday July 14th when Cheshire Under14s played Staffordshire. The choice of venue was a just tribute to the first-rate ground and excellent facilities at Oakmere.

The Delamere Community Centre Annual General Meeting is on Monday, 10th October at 7.30pm.

The Community Centre

Bookings: Mrs Norah Sikorowski 01606 882485
Badminton: (Tues am) Dennis Lorrinan

01606 889876
(Thurs pm) Jane Wright

01606 882708
Bingo: 01606 888877

Bowls: Sylvia Dykes 01606 888389
Gerald Merry 01829 733388

Bridge: 01606 889872

Brownies & Guides: Elly Heffernan
01606 888449

Forest Art Group: Fred Gardner 01829 751907

Golden Age: Jean Riches 01606 882094

Snooker: 01606 888029

01606 889872

Whist: 01606 888889

Women's Institute: Glenys Didsbury
01829 751645

Delamere Head the Tables

By the mid point of the season Delamere were in top spot in two of the local bowling divisions.

Delamere A shared the lead in Section Three of the Mid Cheshire Bowling association League with Over Park, both teams on 2626 points. They also led Division Three of the Norley Evening League by 25 points. Although the third of the A teams were struggling to retain their place in the first of the seven sections of the Norley Afternoon League, there is no doubting the club's overall strength in local bowling circles.

Garden Party Grand Draw Prizewinners

2772 S.Wyldes (Sandiway) Meal for Two at the Fishpool

2341 Arthur Ellison (Mere Crescent, Oakmere)

2998 J.J.Cowap Jnr. (Little Budworth)

4888 Claire Wright (Station Road, Delamere)

2866 Mrs Burke (Overdale Lane, Oakmere)

3841 Sian Hancock (Kelsall)

4852 Brenda Buckley

0531 Yvonne Downen (Ashton Hayes)

0055 Joan Berry (Cholmondeley)

1973 Peter Hough (Fourways Inn)

3081 Tony Penney (Forest Road, Oakmere)

3696 Katie Merrick (Kelsall)

1346 Lynn Withinshaw (Waste Lane, Kelsall)

3274 Sandra Garner (Hartford)

0090 J.Ashbrook (Chester)

1326 Mrs T.Pottinger (Common Lane, Kelsall)

1475 Ron Billows (Chester Road, Oakmere)

1197 Gwen Hall (Little Budworth)

2551 M.Ashbrook Watling Drive, Delamere)

4684 Peter Powell (Dalefords Lane, Sandiway)

0386 Bill Cliff (Charmouth, Dorset)

4763 Caroline Hassall

2326 W.Barker (Wistaston, Crewe)

2345 Norma Ellison (Liverpool)

0575 David Goodwin (Station Road, Delamere)

0876 Alison Bates (Marston)

3048 Paul Rowley (Eddisbury Hill Park, Delamere)

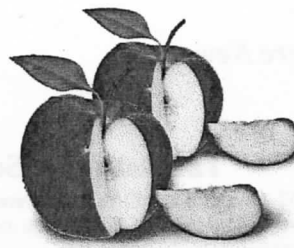
ACKOMATICS



WASHING MACHINES,
TUMBLE DRYERS
&
DISHWASHER REPAIRS

*Also New & Re-conditioned
Machines available for sale or
rental
Reasonable Rates*

**Call Paul on 07976 969223
Or 01829 760355
Cotebrook, Tarporley**



Cheshire Apple Juice

Cheshire's most pure and natural apple juice
made from the finest quality apples grown on
rich Cheshire Soils.

Ideal for a breakfast juice, or an aperitif
at any time of the day or night.

Choose from over 10 varieties
of apple juice all with their own individual
character and flavour.

No artificial colourings or preservatives,
no sugar is added.

Grown, Pressed & Bottled at Eddisbury Fruit Farm,
Kelsall, Cheshire. Telephone 01829 751300
www.eddisbury.co.uk



VALE ROYAL FARMERS' MARKET

**EDDISBURY FRUIT FARM
YELD LANE, KELSALL**

**EVERY THIRD SATURDAY
OF THE MONTH**

20 Stalls Local Food & Craft

18TH JUNE 2005

16TH JULY 2005

20TH AUGUST 2005

**16th JULY is Vale Royal Farmers'
Market 5th Birthday**

MOUNT PLEASANT GARDENS

Yeld Lane

[Turn off A54 at Kelsall Traffic Lights and then right into
Yeld Lane]

Over six acres of landscaped garden

**OPEN TO THE PUBLIC
Saturdays/Sundays/Wednesdays
& Bank Holiday Mondays
until 28th September**

Admission £3

*Visitors can purchase a variety of homegrown plants and
seasonal hanging baskets or just spend time relaxing
and admiring the views.*

**CONTACT: Louise Worthington
Tel: 01829 751592 or 07971 086239**

The Delamere School Outing.

This photograph, taken in 1952, aroused a lot of interest. Several people got in touch with some of the names, but it was Vera Page (nee Gore), who now lives in Chester, who supplied the complete list.



Back row: The Rector Joan Lovatt Elsie Hughes Mary Smith Mary Lyon Barbara Neild Brenda Wright Joyce Crane

Norman Ackerley

Barbara Anglesea

Ann Johnson

Charlie Gregory Betty Crawford Ann Prince Vera Gore Glenda Brandon Elsie Davies Hazel Garner Margaret Lloyd

Tony Prince Norman Wright Robert Vernon Lucy Lyon Glennis Ball Alice Astbury Elizabeth Rutter Brenda Astbury

Ellis Jones Cyril Craven Roy Croxton Jim Spruce Ann Lloyd

WILLINGTON FRUIT FARM FRESH PICKED. HOME GROWN STRAWBERRIES RASPBERRIES

HOME PRESSED APPLE JUICE

**Also: CHESHIRE NEW POTATOES, A
FULL RANGE OF FRESH FRUIT & VEG,
SALADS, LOCAL HONEY, CHESHIRE
FARM ICE CREAM, FRESH CREAM,
CHESHIRE YOGHURT & CHEESES,
WELSH FARMHOUSE YOGHURT, FREE
RANGE EGGS, JAMS & PRESERVES, PRE-
PACKED CHEESES, HERB PLANTS,
HANGING BASKETS & PERENNIALS**

Visit our small Herb Garden

Browse around the herbs in pots (from £1.10)

APPLES from late August onwards

Open: 10am – 5.30pm every day

**Signposted to Willington Fruit Farm
WINSORS, CHAPPELLANE, WILLINGTON,
Nr. KELSALL, CHESHIRE**

Tel: 01829 751216

THIS SPACE FOR SALE

Advertise in

Delamere & Oakmere News

For £6.50 per Quarter Page

or

**£12.50 per Half Page
every two months**

*and reach a wide and discerning
reading public – over 600 households.*

[Ring 01829 752723 for details.]

THE NORTH-WEST'S FAVOURITE FOR CARAVANS AND OUTDOOR LEISURE

**SET IN OVER 10 ACRES OF
BEAUTIFUL CHESHIRE COUNTRYSIDE!**

- **MASSIVE SHOWROOM - OVER 35 CARAVANS UNDER ONE ROOF!**
- **GREAT CHOICE OF USED CARAVANS FROM ONLY £1995**
- **HUGE LEISURE SUPERSTORE - EVERY OUTDOOR ACCESSORY YOU NEED**
- **OUTDOOR CLOTHING - TOP BRANDS AT THE LOWEST PRICES**
- **1000s OF GIFT IDEAS - GAMES, BOOKS, CARDS & MORE**
- **ROMANY TEAROOM - DELICIOUS HOME-MADE MEALS & BREAKFASTS!**
- **AWARD-WINNING SERVICE DEPARTMENT**
- **AWNING SHOWROOM**



On the A556 Chester Road,
Delamere Forest, Nr. Northwich,
Cheshire CW8 2HB

Open 7 days

The Great Outdoor Experience!

Tel: 01606 882032

Web: www.harringtons-caravans.co.uk

Email: enquiries@harringtons-caravans.co.uk

Travel Information

Trains

from Delamere

to Manchester:

(Cheap Day Returns/
£7.10-Mon to Sat.)

dep.10.16 am arr.11.27am

then every hour until

dep.5.16pm arr. 6.27pm

then: 6.12pm &

every hour until 9.12pm

Last train @ 11.00pm

from Delamere

to Chester

(Cheap Day Returns/

£3.95 Mon. to Sat.

dep.10.31am arr.10.50am

then every hour until

11.31 pm

Buses

Whitegate Travel

Single Full Fare:£2.40

(Tuesdays only – to Northwich)

dep.Frith Avenue 9.20am

Eddisbury HI Pk 9.30am

Abbey Arms 9.35am

then via Little Budworth, Whitegate,
Hartford to

Northwich Watling St. 10.37am Sainsburys

10.40am

Return to Delamere:

dep. Sainsburys 12.10pm

Watling St. Stand D 12.23pm

arr. Delamere 1.35pm

Arriva

[Route 82] Mon – Sat ~ to Northwich

opp. Abbey Arms 8.59am & then every
hour until 6.39pm (-4 mins.at School)

[Route 82] Mon-Sat ~ to Chester

by Harringtons 7.40am & then every hour
until 5.40pm (+11 mins. at School)

No.82 Buses leave Chester & Northwich at
25 minutes past the hour (not 5 minutes
past, as previously stated)

[Route 230] Mon – Fri ~ to Winsford

Top End of Kelsall : 8.05am,9.50am,

11.20am, 1.20pm & 3.25pm

Dep. Winsford

8.30am,10.15am,12.00pm,2.00pm & 4.35pm

[Route X20] Tues,Thur,Sat ~ to Cheshire

Oaks.Top End of Kelsall: 9.44am

Arriva Day Ticket:

Adult £3.30

Child £1.60

Conc.£1.65

Rural Bus Service

01606 871990

**To book a journey please ring the day before
you wish to travel**

Fare: £2.20 each way/ £1.10 concessionary.

Monday

9.00am Cote Brook, Utkinton, Delamere

to Winsford.

Return 12.00pm

10.30am

Cote Brook, Utkinton, Tarporley, Delamere

to Northwich.

Return 1.30 pm

Tuesday

9.00am Crowton, Norley, Delamere **to Winsford**

Return 12.00pm

12.30pm Crowton, Norley, Delamere

to Northwich

Return 3.00pm

Wednesday

9.30am Cote Brook, Tarporley, Delamere

to Northwich

Return 12.30pm

1.30pm Tarporley, Delamere, Utkinton, Cote Brook

to Winsford

Return 3.30pm

Other Routes

From Delamere Stn. ~ to Tarporley,

via Summertrees & Utkinton, (35 mins.)

&Whitchurch (79 mins.):

9.36am, 11.36am, 1.36pm, 4.36pm

From Delamere Stn ~. to Frodsham

(c.20 mins.): 10.30am, 12.26pm, 2.56pm.5.30pm*

***to Runcorn** at 5.56pm

From Willington Corner ~ to Tarporley &

Bunbury (via Beeston & Peckforton):

11.47am, 5.01pm

From Willington Corner ~ to Chester:

9.33am, 10.32am,12.43pm,1.02pm.

*The editor disclaims all responsibility for changes,
cancellations, mistakes, breakdowns, leaves on the
line, cows on the road – or almost anything else – in
the above information.*