

# *Delamere and Oakmere News*

*Number 20*

*Dec/Jan 2008-09*

*Merry Christmas  
and a Happy New Year!*



*View from the Roman Road, Eddisbury Hill*

**What's On**  
**Dec/Jan**

*All events in Delamere  
Community Centre, unless  
indicated.*

*All club/society secretaries  
Please let me know well in  
advance the dates of your  
meetings for the following two  
months (ie by 16<sup>th</sup> January for  
Feb/March etc. (if you would  
like them included in this  
diary).*

*Contact me on either:  
01829 752723, or by e-mail:  
robin.ackerley@btinternet.com  
or at: The Paddock, Stoney  
Lane, Delamere\*, Tarporley  
CW6 0SX  
(\*not Kelsall)*

**Women's Institute**  
**Tues. 9<sup>th</sup> December**

*Christmas Party  
Home-made Christmas Card  
Competition  
7.30pm*

**Golden Age**  
**Wed. 10<sup>th</sup> December**

*Christmas Lunch  
Members only  
12.30pm*

*Sun., 14<sup>th</sup> Dec.  
Delamere Church  
Nine Carols Service  
6.30pm*

**Delamere Parish**  
**Council**  
**Mon. 15<sup>th</sup> December**  
Committee Meeting  
Delamere School  
7.30pm

*Sun., 21<sup>st</sup> Dec.  
Oakmere Methodist  
Church  
Carol Service  
10.45am*

**Delamere Church**  
**Christmas Eve**

**4.00pm**  
***Family Christingle***  
***Service***

~~~~~  
**11.45pm**  
**Midnight**  
**Communion**  
~~~~~

**Christmas Day**

**8.00am Holy**  
**Communion**  
**10.30 am Short**  
**Family Service,**  
followed by  
**Short Holy**  
**Communion**

**Golden Age**  
**Wed. 7<sup>th</sup> January**  
Talk on  
New Zealand  
Ted Hawker  
2.30pm

**Women's Institute**  
**Tues., 13<sup>th</sup> January**

A talk by  
Kay George  
on the  
Citizens' Advice  
Bureau  
7.30pm

**Delamere Parish**  
**Council**  
**Mon. 19<sup>th</sup> January**  
Committee Meeting  
Delamere School  
7.30pm

**University of the**  
**Third Age**  
**Wed., 21<sup>st</sup> January**  
Dave Cook  
Humour in Education  
The Fourways  
2.15 pm

\*sec p 14 for details

**Golden Age**  
**Wed. 21<sup>st</sup> January**  
Bingo  
2.30pm

**Golden Age**  
**Wed. 4<sup>th</sup> February**  
Hot Pot Lunch  
12.30pm  
followed by a talk  
The Driving Test. How good  
are you?  
Tom Kerney

**Golden Age**  
Talk by  
John Howarth  
Himalayan Adventure  
2.30pm

**St Peter's Delamere**  
**Sunday School**  
meets every 4<sup>th</sup> Sunday in the  
month. All ages welcome. For  
further details please phone  
Gloria Ackerley  
on 01829 752723

**Delamere Primary**  
**School**  
**MUMS' AND**  
**TODDLERS'**  
**CLUB**

Come and have FUN!  
Every Monday 1 till 3pm  
£1 entry including  
refreshments  
Stoney Lane, Delamere, CW6 0ST  
01244 981145

**DELAMERE BINGO**  
**CLUB**

Bingo every Saturday  
Prize Bingo every 4<sup>th</sup>  
Tuesday  
Eyes down 7.30pm

**Imperial v Metric**  
It is the policy of this Newsletter  
to refer only to imperial weights  
and measures.

R.

# THE FOURWAYS INN

*at Delamere*

**CONFERENCE CENTRE \* BANQUET CATERING \* PUB**

**EVERY SUNDAY 12.00 – 8.00 PM**

**2 COURSES £7.95 3 COURSES £9.95**

**EVENING SET MENU (FROM 6.00PM):**

**2 COURSES £8.95 3 COURSES £10.50**

**LUNCHES MONDAY TO SATURDAY ONLY £5 – OVER 15 ITEMS**

**BRING IN THIS ADVERT AND RECEIVE A FREE GLASS OF WINE  
WHEN ORDERING A MEAL**

**CHESTER ROAD, DELAMERE, NORTHWICH, CHESHIRE CW8 2HB**

**TELEPHONE 01606 882126. FAX 01606 883334**

**Email: [fourways@thefourways.co.uk](mailto:fourways@thefourways.co.uk) Web Site: [www.thefourwaysinn.co.uk](http://www.thefourwaysinn.co.uk)**

## **SWP ELECTRICS**

**SOCKETS LIGHTS REWIRES**

\*

**NO JOB TOO SMALL WE DO THEM ALL**

\*

**PORTABLE APPLIANCE TESTING**

\*

**PROMPT RELIABLE SERVICE**

\*

**FREE ESTIMATES**

\*

**REFERENCES AVAILABLE**

\*

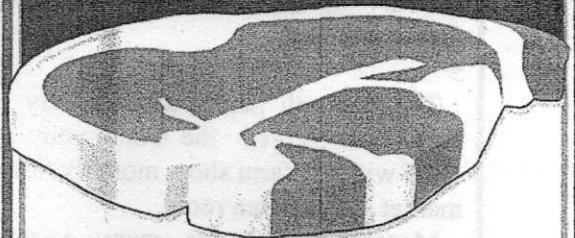
**Telephone 01928 740415/740237**

**Stephen Warburton**

**Tarvin Road,**

**Manley, Cheshire WA6 9EW**

**OUR REPUTATION  
IS AT STEAK!**



**DUTTON'S**  
*Quality Meats*



**4a Church St, Kelsall  
Opp. Dr Surgery**

**01829 751355**



### Jeff Dykes

Monica and Colin Haworth and Mike and Ola Dykes of Eddisbury Fruit Farm would like to thank everyone for their kind letters, condolence cards and beautiful flowers expressing sadness at the sudden and tragic loss of our eldest son and brother.

Jeff was a loving, caring and gentle man who found the separation from his young daughter too much to bear. Our consolation is that Jeff is now at peace, a peace which his world could not give him.

He was not only a valued member of our family, but also a valued member of our business, taking our Cheshire apple juice to customers all over the North West.

Many of you throughout the area were also very shocked to hear of Jeff's sudden death with over two hundred people attending Jeff's funeral at St Andrew's Church, Tarvin on 19<sup>th</sup> June.

It will be a moment in our lives when we will look back and see only one set of footprints in the sand. We know that it is your love and the love of God that continues to carry us through. Thank you for all your hugs and prayers and continued support.

Early in 2000 Jeff said,

*Life is a waste of time,*

*Time is a waste of life,*

*So let's get wasted and have the time of  
our lives...*

£735.04 was donated to the local MIND in memory of Jeff.

\* \* \* \* \*

The Haworth family at Eddisbury Fruit Farm have served the Community since 1936 with the farm shop, monthly farmers' market and new tea room.

Monica served for many years on Delamere Parish Council and was recently chairman. She also played a very active part in the saving of Delamere School from closure.

*Useful contacts:*

SOBS Mold or SOBS Crewe. National Helpline 0870 2413 337. [www.uk-sobs.org.uk](http://www.uk-sobs.org.uk)

SOBS: Survivors of Bereavement by Suicide.

### Letter from the Forest

What a superb autumn for colours!

Views from the Old Pale across the forest make you rally appreciate how lucky we are to live in such a beautiful area. The larches turning gold, the oaks, birches and pockets of beeches contrasting with the dark greens of the pines are truly stunning. One recent visitor to our Visitor Centre said our colours are as good as, if not better than, those in New England in the USA – a compliment indeed!

Christmas is fast approaching and, as usual, Christmas trees will be available from 1<sup>st</sup> December and Santa will be in his grotto at weekends from 6<sup>th</sup> December, 9.00am to 5.00pm, with late nights 11<sup>th</sup>/12<sup>th</sup> December 4.00pm to 8.00pm. Come early to avoid the queues and still enjoy the atmosphere.

For those of you who have young children we have Forest Tots on a Wednesday morning, a fun-filled educational play session led by a Delamere Forest Ranger (£4 per session, reservations essential. Contact 0783 4901 700). Judging by the noise coming from the classroom, everyone is enjoying themselves and having fun!

In the springtime it is anticipated that our educational activities will be developed with the appointment of a talented new Education Ranger from Kew Gardens and, with the help of children from Delamere School, we are also about to construct a 3D model of the forest, which will become an attraction in our refurbished Visitor Centre.

We always appreciate a visit from locals. Please come and see us in the Visitor Centre for up-to-date information and advice on all the walks and trails. You will always be made very welcome and any thoughts and ideas gratefully received.

*Don Wilson.*

### Website!

Delamere is soon to have its own website. It's not just *The Archers* that's moving into the 21<sup>st</sup> century.

More news in the next issue.

# *The Fishpool Inn*

## *Christmas Menu*

Available from 27<sup>th</sup> November to 31<sup>st</sup> December

**£16.50/Small Portion £13.00**

prices include VAT. Gratuities at your discretion.

**Tel: 01606 883277**

Please call to make a booking and to discuss your requirements.

## *Traditional Ales*

## *Garden*

**Open: 11.30 – 3.00 & 5.30 – 11.00 Monday to Friday**

**All Day Saturday & Sunday**

**Food Served All Day at Weekends.**

**Senior Citizens Menus Available ~ £5.95**

# **DELAMERE STORES**

**13 Station Road, Delamere, Northwich, Cheshire CW8 2HU**

**Tel: 01606 882226**

## **SHOP LOCALLY**

**LOCAL FREE-RANGE EGGS ONLY 95P/HALF DOZEN**

**4 KITCHEN ROLLS 99P**

**BAKED BEANS 25P**

**TEABAGS 59P**

**COFFEE £1.49**

**1 LITRE OF FRESH ORANGE 69P**

**MIXED FRUIT JAM 59P**

**TUNA FLAKES IN BRINE 45P**

**CHOPPED TOMATOES 33P**

**PEPSI 2 LITRE – BUY ONE GET ONE FREE**

Also Sue Coward's pies are now baked daily in store.

**WE ARE OPEN: 6.30am – 6.00pm Mon. – Thurs.**

**6.30am – 6.00pm Friday. 6.00am – 5.00pm Saturday.**

**7.00am – 2.00pm Sunday**

## Cheshire Place-names 2

Compiled by Lindy Timms

*Following the Cheshire village/town quiz in the October/November issue, here are the next 25 questions. We've also included the first set of questions, in case you missed them the first time.*

1. Road surface could make you ill. [9]
2. Highly masculine town [6]
3. A rich Aussie's town. [7]
4. Small house on the rise [7 & 4]
5. Road surface to turn you to drink [6]
6. Give generously [9]
7. Aldous? [6]
8. A medal for climbing this slope [9 & 4]
9. It rains in this establishment [10]
10. Inter that cake [7]
11. An educational colour [7 & 5]
12. Fussily [8]
13. A very hot pig indeed [10]
14. The crossroads cease [4, 5 & 3]
15. Up & over whilst country walking [5]
16. A big wheelie [5 & 6]
17. Talkative tiny plant [4 & 4]
18. Rabbits live here [6]
19. Squeezed fruit [9]
20. Angry pig meets ex-footballer [14]
21. Agatha's heroine [6]
22. An adequate sufficiency [5]
23. Lose this and look sick [3 & 5]
24. In a sulk [5]
25. Express surprise at inclement weather

*Answers to the first set of questions [nos 1-25] appear on p15. Loppraine Roberts of Mere Crescent got 21 of these first 25 correct. Can you beat this score on the next 25?*

26. Put a stop to it [4]
27. Out on a... [4]
28. A brave fruit [9]
29. Fungus worth money [11]
30. Blond hair goes horribly wrong [7 & 5]
31. Tony's prefix was 'almost strong' enough [8]
32. A calm sort of tree [6]
33. Where do you live?? [9]
34. You have to battle in this place [10]
35. ....and hearty [4]
36. Gregory continued the battle [10]
37. Mal steps out of this place [6]
38. Car boot? [4]
39. Hooligans at dawn [9]
40. Cashews cross the water [9]
41. How the farmer greets his cows [9]
42. Deposit from heavy smokers [6]
43. Wrap up warm to cross the stream [9]
44. Local river makes tasty sandwiches [9]
45. Do heavy currant cakes live here? [9]
46. Did Ironside's assistant fall in the lake? [8]
47. Deer crossing? [8]
48. This one's faulty [6]
49. Gone for a ..... [6]
50. Does my backside look big in this? [11]

### Allotment Wanted

David Keogh of Eddisbury Hill is looking for an allotment (or part of a garden) to use for growing vegetables.  
If anyone can help, contact David on 01606 889133 or email [dbkeogh@hotmail.com](mailto:dbkeogh@hotmail.com)

## Changes on the way....

...in local government. On 1<sup>st</sup> April our local authority, Vale Royal Borough Council will give way to the newly-formed Cheshire West.

The new set-up is part of a rationalisation of local government aimed at reducing costs. That being so, does it mean that we can all look forward to reductions in our council tax bills?

We shall see...

Of one thing we *have* been assured. The free parking we have enjoyed when visiting Frodsham, Northwich, Tarporley and Winsford - one of the great benefits of living in the Vale Royal area - will continue... at least for the time being.

Many uncertainties remain, the future of this newsletter being one of them. It is at present printed at the Vale Royal offices in Winsford. The VR printers have been the very model of efficiency and helpfulness. What's more, they have managed to produce the newsletter at a very competitive price. Unfortunately at present their future cannot be guaranteed...

\* \* \* \* \*

After a period of uncertainty the future of the **Delamere Golden Age** seems assured. The annual Christmas dinner will, as always, attract large numbers on December 10<sup>th</sup> and the programme of events for the coming year (see What's On on p2) looks entertaining and imaginative.

\* \* \* \* \*

Thanks to tables provided by Frodsham Leisure Centre and Tarporley Table Tennis Club, **Delamere School** have started table tennis coaching at the Community Centre every Friday afternoon.

\* \* \* \* \*

A few months ago Pat Wheeler of Station Road was sent a letter from a Hugh Green, who lives in Canada.

In 1941 he had come to Delamere from Liverpool as an evacuee and lived with Gavin Clegg and family at Long Ridge. At first he was educated with the Clegg boys by their governess, but when they went away to school he went to Delamere School where he stayed until 1945.

He had fond memories of his Delamere days (who wouldn't have?) and when Pat gave me his email address I got in touch with him.

He could recall a number of names from his time here and, strange though it may seem, as a five-year-old I could just about remember a big boy called Hugh standing in the boys' cloakroom with his back to the wall and a hat on his head. When he put his finger in his mouth and blew, the hat rose up in the air!

Hugh confirmed that he was indeed the wartime magician. If anyone else from Delamere remembers him, he would love to hear from you

Email him at [noreengreen@shaw.ca](mailto:noreengreen@shaw.ca)

R.



**WINSOR'S  
WILLINGTON  
FRUIT FARM SHOP**  
**ALL HOME-GROWN APPLES**

COX'S ORANGE, HOLSTEIN COX,  
ROYAL GALA, KIDDS ORANGE,  
CHIVERS DELIGHT, GOLDEN  
DELICIOUS, BELLE DE BOSKOOP,  
CRISPIN & MELROSE  
MAINCROP APPLES SOLD IN SMALL OR  
LARGE QUANTITIES

**HOME-PRESSED APPLE JUICE – 7  
VARIETIES**

*Christmas Wreaths*

CHEHSIRE POTATOES AND A FULL RANGE OF  
FRESH FRUIT & VEG., SALADS, LOCAL HONEY,  
CHESHIRE FARM ICE CREAM, FREE-RANGE  
EGGS, JAMS & PRESERVES, WELSH  
FARMHOUSE YOGHURTS, CHESHIRE YOGHURT  
& CHEESES, PRE-PACKED CHEESES  
TRAYBAKES

**OPEN: 9.30am – 5.00pm**

**EVERY DAY**

*Signposted to:*

**Willington Fruit Farm Shop  
WINSORS, CHAPEL LANE,  
WILLINGTON, Nr.KELSALL,  
TARPORLEY, CHESHIRE**

**Tel: 01829 751216**

**www.willingtonfruitfarm.co.uk**

*Wedding Chair Cover Hire*



**£2.50 per Chair Cover**

We also hire Organza Sashes and Bows.  
We offer a national Delivery & Collection service  
To check availability, and to take advantage of  
our free sample service, please contact us  
[organsdale.linen@yahoo.co.uk](mailto:organsdale.linen@yahoo.co.uk)

**Organsdale Linen**

**Kelsall, Cheshire**

**CW6 0SS**

**Telephone 01829 752782**

**<http://organsdale-linen.mysite.orange.co.uk>**

**easylife gm ltd.**

e-mail: [info@gm.co.uk](mailto:info@gm.co.uk)

[www.easylifegm.co.uk](http://www.easylifegm.co.uk)

tel: 01606 889833

fax: 01606 882090

**Sales, Spares & Repairs for all leading makes  
Of Garden Machinery.**

**We are located at Dairy House Farm on the corner  
of Farm Road and Chester Road on the A556  
opposite the Fourways Quarry, Oakmere, CW8 2HB**

**Open Mon -Fri 8.30 – 5.00. Saturdays: Sept – Mar 8.30 – 1.00; Mar – Sept 8.30 – 4.00**

***Call us for any further information or details.***

*A Christmas Celebration*  
with  
**Bunbury Singers**  
Musical Director: Martin Cook  
at  
**St. Bartholomew's  
Church**  
**Church Minshull**  
Proceeds to church restoration fund  
**Saturday 6<sup>th</sup> December**  
**7.30pm**  
Tickets from  
Liz 01829 740664 or  
Florence Beastall 01270 522677  
or pay at the door  
**Adults: £6.50 Juniors; £3.50**  
(to include light refreshments)

## **DOWNDALE CATTERY**

*An all new purpose built  
Luxury Cattery  
'For Cats Only'*

*Downdale Cattery is a small family run business, set within quiet and picturesque rural settings on the edge of Delamere Forest. If you're like us, your cats have become family members. When you can't be home for them, whether because of holiday, work, illness or other obligations, you want them to be taken care of with the same love and attention you give them at home. Here at Downdale we understand these needs and so we deliberately do everything ourselves so we can ensure individual attention and in return build a relationship with both our customers and their cats.*

*For all further enquires please contact:*

**Joanne & Alan Downes & Family**  
Morreys Lane, Delamere CW6-0SY.

**Tel# 01829-759133 / Mob# 07828307114**

**Email: [downdalecattery@gmail.com](mailto:downdalecattery@gmail.com)**

**[www.downdalecattery.co.uk](http://www.downdalecattery.co.uk)**

## **ASH-WORTH TIME BANK – ARE YOU A MEMBER YET?**

Ash-worth Time Bank has expanded into Delamere, Oakmere and Cuddington, encouraging local people and organisations to share their skills and time with others. Membership is free as are ALL services. 2009 promises to be a busy year for Ash-worth Time Bank. A full programme is currently being prepared and will be available shortly to members, plus a newsletter. Being a member of a time bank is like having an insurance policy – **you never know when you may need help!**

Please remember – there is absolutely no obligation – you only do the things you like to do and have time to do. You do not have to be actively involved to ask for assistance – we want to help with lifts, companionship, shopping, computer techniques, dog walking, garden clearing, ANYTHING!

**Delamere Table Top Sale and Coffee Morning: Saturday 31<sup>st</sup> January 10am-Delamere Community Centre.**

Tables £5 each. Cakes, raffle, crafts and coffee/tea. Why not come along and chase away those January blues? Phone Susan on 01829 751398 to reserve a table – or perhaps you would like to bake a cake or help out?

**Ash-worth Time Bank Quiz Night; Friday 27<sup>th</sup> February 7pm – Kingsley Community Centre.**

This is an annual event and great fun. Come along and test your skills and knowledge. A great night out. Fully licensed bar, buffet and wine. £6.50 per ticket. Phone Caroline on 01829 751398 to reserve a place.

**A FULL PROGRAMME OF  
EVENTS CAN BE OBTAINED BY  
VISITING:**

**[www.ash-worthtimebank.org.uk](http://www.ash-worthtimebank.org.uk)**

or emailing:

**[ash-worthtimebank@hotmail.co.uk](mailto:ash-worthtimebank@hotmail.co.uk)**

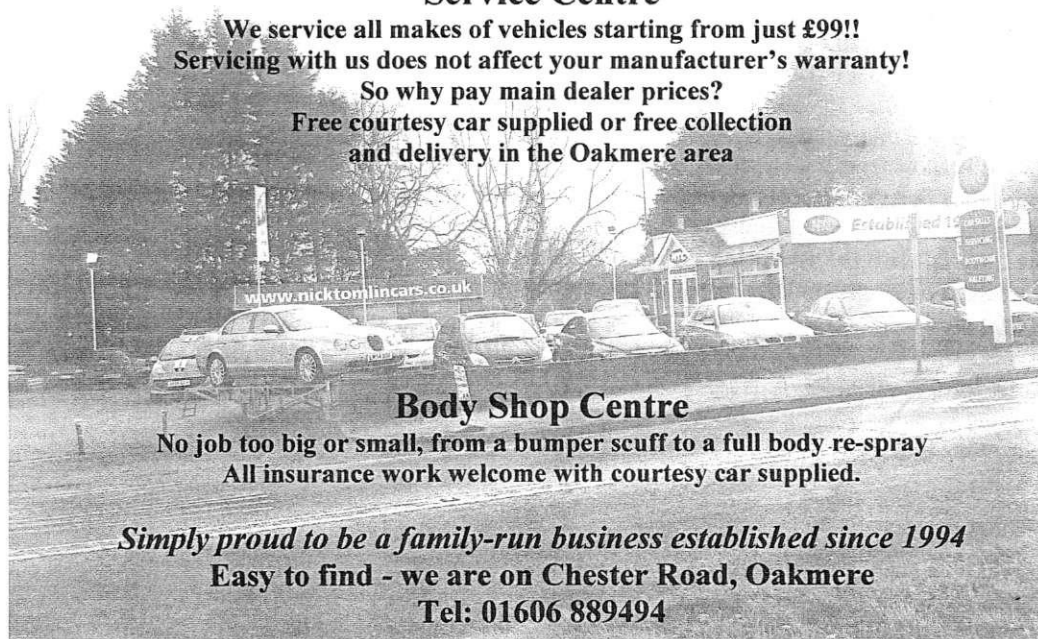




**Nick Tomlin Cars**  
**Your friendly local Used Car Dealer**  
**Service Centre**

We service all makes of vehicles starting from just £99!!  
Servicing with us does not affect your manufacturer's warranty!

So why pay main dealer prices?  
Free courtesy car supplied or free collection  
and delivery in the Oakmere area



**Body Shop Centre**

No job too big or small, from a bumper scuff to a full body re-spray  
All insurance work welcome with courtesy car supplied.

*Simply proud to be a family-run business established since 1994*  
Easy to find - we are on Chester Road, Oakmere  
Tel: 01606 889494

**J.W.Landscapes**

*Jamie Wright*  
**BLOCK PAVING**

**FLAGGING**

**GATES**

**DECKING**

**TURFING**

**TREE WORK**

**FREE ESTIMATES**

**RELIABLE SERVICE**  
*Little Budworth, Tarporley, Cheshire*

**Tel: 01829 760223 & 07955 219969**

**SUMERTREES**  
**TEA ROOM**

**Delicious Hot & Cold**  
**Snacks**

**Home-made Soup**  
**and Cakes**

**Tues – Thurs 11.00am–.00pm**  
**Sat – Sun 10.30am-5.00pm**  
Closed Mondays & Fridays  
(Except Bank Holidays)

*Tirley Lane, Willington, Nr.Tarporley,*  
*Cheshire CW6 0PF*

**Tel: 01829 751145**

## Footpath Fiasco

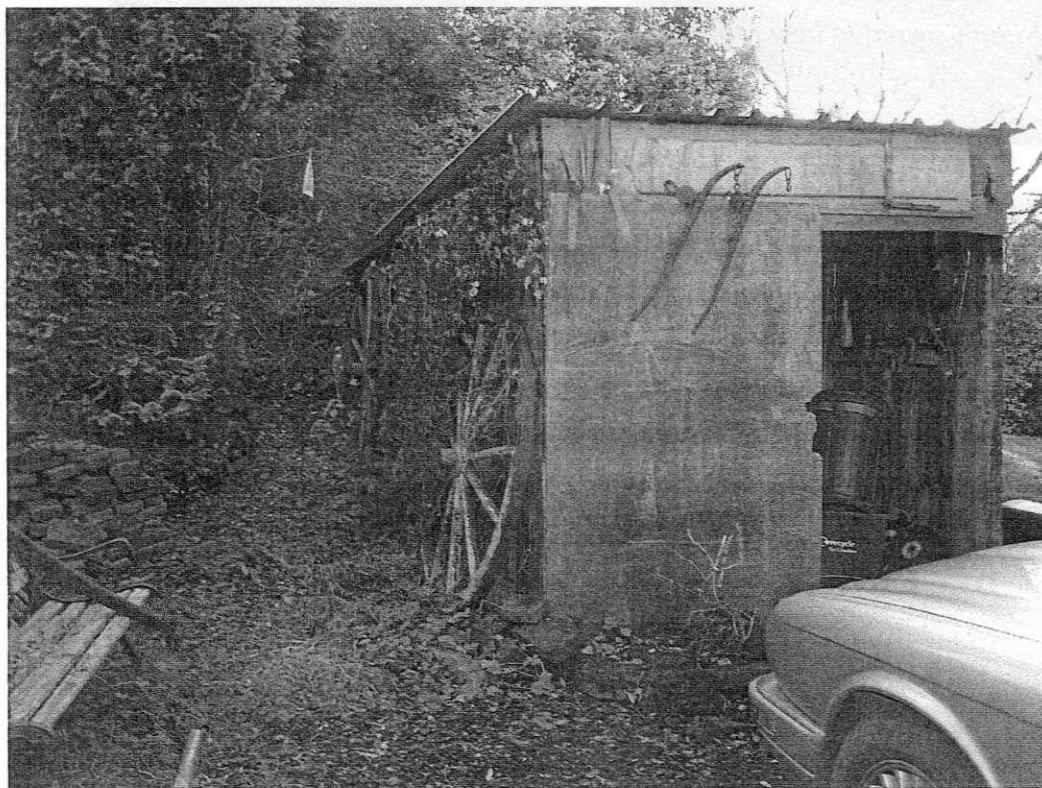
In late October James Walker of 2 Broom Cottage, Yeld Lane received a letter from the Public Rights of Way Maintenance & Enforcement Officer. Its subject was *Public Footpath No10 in the Parish of Delamere*.

The letter stated that following a recent report the officer, Richard Ankers, and his manager had inspected the footpath and had found the path "to be heavily overgrown between Longley Farm and Broom Cottage". The letter continued, "During our inspection we also identified that the route was further obstructed by your garage. The original report had also mentioned "an intimidating and aggressive dog chained to the garage", but noted that "The dog was absent during our inspection".

The letter went on to state that, since the garage was preventing members of the public from using "the public highway" (*sic*), it must be removed. Mr Walker was ordered to clear the obstruction within 28 days of this letter. If after 19<sup>th</sup> November the obstructions were found to remain in place, then action would be taken by the County Council and the cost be recharged to Mr Walker.

To say that the Walker family were taken aback by this letter out of the blue would be a gross understatement. The fact that the pathway leading to the back of the garage was "heavily overgrown" is hardly surprising: no one has presumably attempted it since the footpath was rerouted some years ago. - **no one, that is, with the exception of one or two bloody-minded individuals intent on asserting the rights of ramblers regardless of the inconvenience and distress caused to local residents.** There are even footpath signposts which indicate the revised route, but one can only assume that the footpath inspectors chose to ignore these. They can hardly have failed to see them.

The letter was accompanied by A WORKING COPY OF THE DEFINITIVE MAP which sure enough shows the footpath passing right in front of Broom Cottages. Of the offending garage there is no sign on the map. The footpath was indicated on this map by a thickly drawn purple line



*The garage that blocks the right of way!*

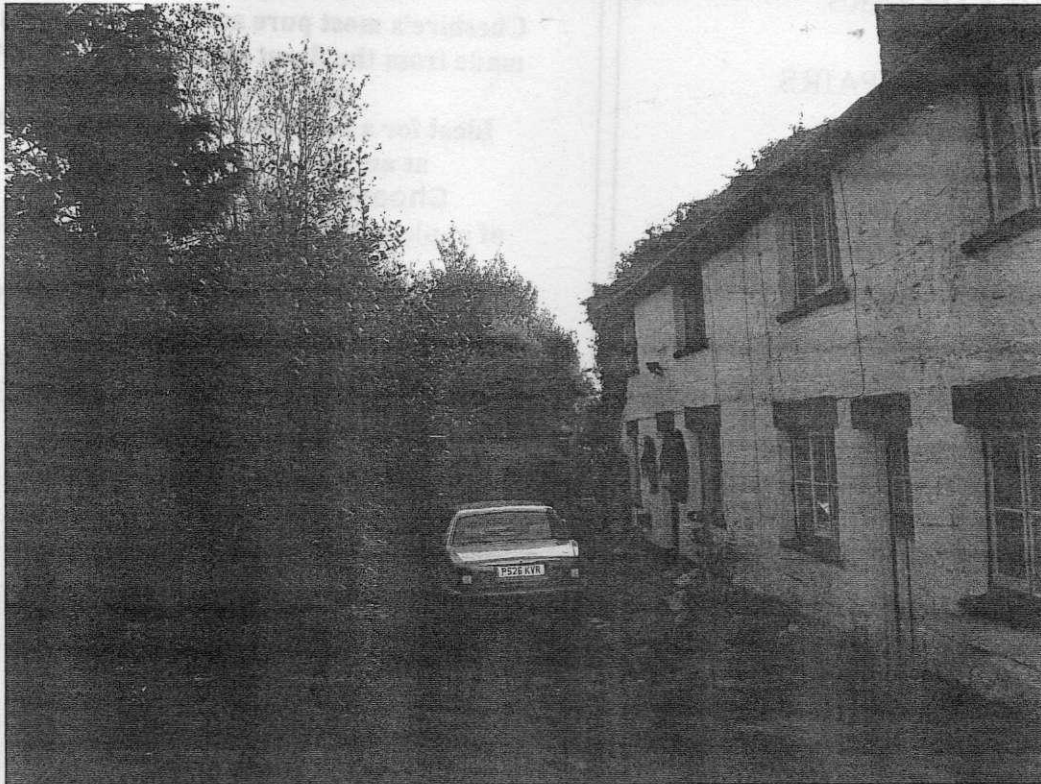
All this is very strange since it appears that the garage has stood there for many years. Last week I spoke to Raymond Stokes, who lives next door at 1, Broom Cottage. Raymond has lived there all his life. He was born there seventy years ago. He assured me that the garage has stood there for as long as he can remember. I also spoke to Jean Craven from Winsford, who as Jean Murphy lived at no 1 from her birth in 1946 until she married. Jean, who cannot recall a time before the garage was built, is



adamant that no one used the alleged footpath (which would have passed through their garden and right in front of their front window) during the whole time that she lived there.

Following a visit to the relevant office (Phoenix House) in Winsford Mrs Cook, who owns the cottage, and Mr Walker, who is the tenant, were sent a letter dated 13<sup>th</sup> November agreeing to delay taking enforcement action pending receipt of "an application to have the Definitive Map corrected by way of Definitive Map Modification Order (DMMO)". The application has to be received by 12<sup>th</sup> December. The letter also stated that before that date a suitable path will have to be made available around the garage, on a temporary basis as an alternative route. This would involve some clearance work being carried out around the garage, the works being carried out to the authority's specifications. Should the DMMO application fail, then the owners of Broom Cottage will be required to remove any obstructions on the line of the path including the garage.

*Broom Cottage in front of which the footpath allegedly passes.*



Talking with the County Council's Rights of Way Maintenance Manager helped to clarify the situation. Apparently when the footpath was re-routed some years ago, even though footpath signs were put up, the correct procedure was not followed. As a result the Definitive Map still shows the original route – and that, according to the law governing these matters, is what counts.

None of this would have come to light and a good deal of distress to the owners and tenants of Broom Cottage would have been avoided had the obstruction to the official footpath not been reported, presumably by some countryside ramblers (when pressed, the spokesman at the County offices was either unable or unwilling to identify the complainants). Nobody stands to gain from the demolition of the garage, but the law as it stands has to be complied with.

The only hope is that enough evidence can be assembled to prove to the satisfaction of officialdom that the offending garage has been in place for many years and that the footpath that passes right in front of the house has not been used in that time.

It is particularly worrying that the full weight of the law can be brought down on the shoulders of people who are entirely innocent of any wrongdoing and that the onus should be then placed on them to prove their innocence. No one is suggesting that ramblers should not have rights, but one can only ask that their rights be exercised with due regard for the rights and wellbeing of the people through whose countryside they choose to ramble.

R.

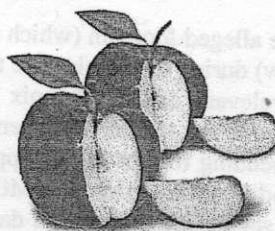
## ACKOMATICS



WASHING MACHINES,  
TUMBLE DRYERS  
&  
DISHWASHER REPAIRS

*Also New & Re-conditioned  
Machines available for sale or  
rental  
Reasonable Rates*

Call Paul on 07976 969223  
Or 01829 760355  
Cotebrook, Tarporley



## Cheshire Apple Juice

Cheshire's most pure and natural apple juice  
made from the finest quality apples grown on  
rich Cheshire Soils.

Ideal for a breakfast juice, or an aperitif  
at any time of the day or night.

Choose from over 10 varieties  
of apple juice all with their own individual  
character and flavour.

No artificial colourings or preservatives,  
no sugar is added.

Grown, Pressed & Bottled at Eddisbury Fruit Farm,  
Kelsall, Cheshire. Telephone 01829 751300  
[www.eddisbury.co.uk](http://www.eddisbury.co.uk)



## VALE ROYAL FARMERS' MARKET

EDDISBURY FRUIT FARM  
YELD LANE, KELSALL

EVERY THIRD SATURDAY  
OF THE MONTH  
20 Stalls Local Food & Craft

20<sup>th</sup> December, 2008  
17<sup>th</sup> January, 2009  
21<sup>st</sup> February, 2009



P&D (Executive)



### Travel

Little Budworth

- Airport Service
- Contract Work
- Private Parties
- Golf Trips
- Plenty of Luggage Room
- 8 Seat Max
- Wide Seat
- Electric or Standard
- Wheelchair Access (Auto Lift)
- DVD and CD
- Fridge on Request



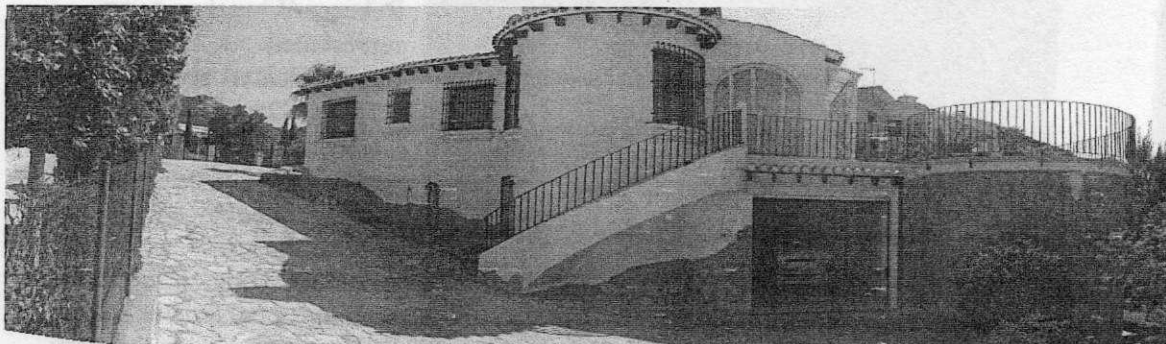
Tel: 01829 760445

Mobile: 07889 081639





## Luxury Villa



**SPANISH VILLA to rent in Costa Blanca, Spain. Spectacular views, private pool (can be isolated from children), private gardens, lovely beaches, golf & mountains. 3 bedrooms, sleeps 6.**

**[www.villapattinson.co.uk](http://www.villapattinson.co.uk)**

**or ring 01829 751116 / 07970 062667**

### Riley IT Services

#### IT Services for home & business

*For all your IT needs*

Broadband & email problems

Upgrades

Virus, spam & spy-ware removal & prevention

Hardware & software problems

VPNs, Wired & Wireless networks

Available 7 days a week

Fully insured

Competitive rates

**Jeremy Riley B.Eng (Hons)**

**0797 3864465 or 01928 726525**

**[riley.it.services@gmail.com](mailto:riley.it.services@gmail.com)**

### FORTRESS FENCING

**Peckforton Tarporley Cheshire**

**Agricultural and Equestrian  
Fencing specialists**

**Gates and Fencing for Garden,  
Orchard and Paddock**

**Rabbit Proofing and Mole  
Control**

**Hedge Planting and  
Maintenance**

**Stewardship Experience**

**Stuart 07887 641023**

**David 07778 984917**

**e-mail: [davidimac@AOL.com](mailto:davidimac@AOL.com)**

## Visit to the Cathedral



On 4<sup>th</sup> October Rebecca Whittaker-Axon represented Delamere Sunday School at the special Pilgrim Day at Chester Cathedral, where she met youngsters from other Sunday Schools and joined in with the many activities, including song, dance and craft sessions. Rebecca, from Delamere C of E Primary School, received a special candle from the Bishop of Stockport.

**Children from the Sunday School at St. Peter's, Delamere** holding a selection of Advent Calendars.

The Sunday School meets on every fourth Sunday in the month, including holidays.

For further details please telephone Gloria Ackerley on 01829 752723.



### The University of the Third Age...

is an international movement which originated in France and now has branches in several countries.

The 'Third Age' refers to the period after the First Age of childhood and the Second Age of employment. Consequently most members are retired and over the age of 50. One in five of the population of this country falls into this category and the proportion is growing.

A typical U3A consists of a group of older people who come together to share their knowledge, experience and interests in an informal way and to arrange creative, educational and leisure activities. **NO QUALIFICATIONS ARE NEEDED AND NONE ARE AWARDED.**

The Northwich Branch of U3A is now entering its tenth year and has over 330

members. Groups meet to pursue the following subjects or interests;

Bridge, Canasta, Coffee Mornings, Crafts, Crown Green Bowling, Current Affairs, French Conservation, Gardening, Geology, Luncheon Club, Music, Outings, Reading, Singing, Sunday Singles Luncheon Club, Tea and Plants, Theatre Visits, Walking.

U3A meets for talks on the 3<sup>rd</sup> Wednesday of each month at **The Fourways Inn**, Oakmere at 2.15pm.

Further details of Group activities are available from the Group Contact, John on 01606 883358.

Applications for membership (£10 per year) should be made to:

The Treasurer, Ernie Styles, 15 Warren Lane, Hartford, Northwich CW8 1RQ.

### Philip Wood (Milk Dairy and Photographer)

Some 33 years ago I started Woods Dairy delivering Milk and Dairy produce in the villages between Warrington and Northwich. My sons David and Christopher work with me in the business and are now taking most of the responsibility, and doing most of the work, in the Dairy. We are all committed to giving you the best possible service we can for many years to come.

Please give me a ring if you would like us to deliver to you. My son Chris delivers in this area and he comes on a Tuesday, Thursday and Saturday.

I am a member of THE SOCIETY OF WEDDING AND PORTRAIT PHOTOGRAPHERS and am now offering my services to you.

My area of interest and expertise is Picturing People - Nature's Finest Subject - and I split my work into the following categories. I have both training and expertise in all these areas.

1. Weddings
2. Studio Portraits specialising in Children's Portraits. My studio is a friendly place and my wife Irene and myself make sure the children are happy and settled before I take the photographs. Usually they are not ready to go home when we finish as they are still happily playing with Tigger, Teddy and friends.
3. Location Portraits (Creating Studio conditions in your own home)
4. Passport Photos
5. Celebrations of Birthdays, Christenings, etc (Parties)

I hope you will bear me in mind if you need any help to capture those important occasions, which are your memories of the future.

#### GRANDMA'S CHRISTMAS SPECIAL

Studio Portrait shoot with a 10" x 8" framed portrait and six 7" x 5" prints for only £50.00

#### A BLAST FROM THE PAST

Why not have that treasured old photograph digitally enhanced and framed as a Christmas gift for someone special? It may well cost you less than you think. Please ask me for a quote.

Please have a look at my Website: [www.philsweddingphotos.com](http://www.philsweddingphotos.com)

or phone me on 01606 851240 for more information.

#### Answers to last issue's quiz.

1. Tarporley
2. Manley
3. Oscroft
4. Bucklow Hill
5. Tarvin
6. Handforth
7. Huxley
8. Gallantry Bank
9. Wettenhall
10. Bunbury
11. Scholar Green
12. Faddiley
13. Swettenham
14. Four Lanes End
15. Styal
16. Great Barrow
17. Chat Moss
18. Warren
19. Prestbury
20. Wildboarclough
21. Marple
22. Eaton
23. Key Green
24. Hough
25. Rainow

Wendy Twiss recently moved from her home in Delamere Grove to Frith Avenue.. All her friends in Delamere Grove and Eddisbury Hill Park would like to wish her well in her new home

### **The University of the Third Age**

U3A is an international movement, which originated in France, and now has branches in several countries.

It caters for people over the age of fifty (hence its name) who come together to share their knowledge, experience and interests in an informal way and to arrange creative, educational and leisure activities.

**NO QUALIFICATIONS ARE NEEDED AND NONE ARE AWARDED.**

The Northwich Branch, which has over 330 members, meet to pursue a wide range of interests:

bridge, canasta, coffee mornings, crafts, crown green bowling, current affairs, French conversation, gardening, geology, luncheon club, music, outings, reading, singing for pleasure, Sunday singles luncheon club, tea and plants, theatre visits and walking.

**On the 3<sup>rd</sup> Wednesday of each month there are talks at The Fourways at 2.15pm.** (see *What's On* on p2).

For details of Group activities contact John on 01606 883358.

For membership (£10 per annum) apply to: Ernie Styles, 15 Warren Lane, Hartford, Northwich CW8 1RQ.

## Aid for Romania

*A couple of years ago, as you may remember, I wrote in the Newsletter about how I went on a number of trips to Romania shortly after the revolution taking aid. Gloria flew out to join me on the last of these trips and subsequently, encouraged by friends at home, she founded a charity dedicated to helping families in Romania with special needs. Network Gloria (the name was suggested by friends we had made in Romania) still exists.*

*Many people understandably assume that, since joining the EU, all must now be well in Romania. Unfortunately this is far from the case. Superficially the country appears more prosperous, but the hardship and suffering that still exists beneath the surface is a real problem – and a reason for the continued existence of Network Gloria.*

*Robin.*

Supporters of Network Gloria will be pleased to hear that the truck carrying five wheelchairs, and electric mattress (to alleviate bedsores) and other essential items has finally reached our families in Romania in time for Christmas.

We are now turning our fundraising to help two other families we know well.

Ionel, one year after floods destroyed homes and caused fatalities, is still living in his sodden cottage. The only new items of furniture are three chairs and a table. The small kitchen still works. The Romanian state has paid for some of the materials, but Ionel has to pay for the labour and the rest of the materials. We already helped with the flooring last winter and this Christmas time we are sending emergency funds to repair the door and three windows. Ionel lives with his elderly parents. *He is completely blind and bedridden with arthritis.*

We are also trying to support a grandfather suffering from leukaemia. By law the Health Service will only pay for part of the treatment. The family must find means to contribute towards drugs and pay monthly for an oxygen cylinder to help with his breathing.

If we could raise £40 a month, we would be able to offer real help to this family.

Such situations are hard to believe, but still exist in Romania. If you feel you can help us to help these families in any way at all, then please contact Gloria or Robin Ackerley (01829 752723). Thank you for past help. Please let us know if you would like a copy of our annual report.

*Gloria..*

## Habitats & Hillforts

The Sandstone Ridge ECONet Partnership has announced that the recent bid for £1.3 million of funding from the Heritage Lottery Fund has been successful.

As a result the new **Habitats and Hillforts Project** is now under way. Its aim is to understand and conserve the natural and historic heritage of the Sandstone Ridge, focussing on the six hillforts along the ridge – Helsby Hill, Woodhouse Hill, **Eddisbury**, **Kelsborrow**, Becston and Maiden Castle.

The scheme is split into four separate programmes: *Habitats of the Ridge* will look at conserving woodlands, heathlands, meres and mosses to create a habitat network; *Hillforts of the Ridge* will be investigated by undertaking archaeological surveys and then developing a management plan to maintain them; an *Access and Interpretation* element will improve access and links to the Sandstone Trail, with additional interpretation information being provided which will enable people to gain a better understanding of the environment; fourthly there will be a *Training and Volunteer* programme.

Between October 2008 and 2011 the project team will be working with local people to deliver a wide range of improvements, including archaeological investigation and management of the six Iron Age hill forts, restoration of an additional 100 acres of habitat, 1400 yards of hedgerow, 750 yards of sandstone walls, 750 yards of footpath improvement and 2½ miles of new permissive footpaths.

A range of material including booklets, leaflets and on-site interpretational panels to help people gain a better understanding of the environment will also be produced. There will also be a dedicated 'habitats and hillforts' website, as well as a range of events and activities such as guided walks and reminiscence and community workshops.

The Habitats and Hillforts website will give you up-to-date information about what is going on and how you can get involved.

For more information about the project visit [www.habitatsandhillforts.co.uk](http://www.habitatsandhillforts.co.uk), or contact the project team on 01244 973105, or email [habitatsandhillforts@cheshire.gov.uk](mailto:habitatsandhillforts@cheshire.gov.uk)



## Travel Information

### Trains from 10<sup>th</sup> December

#### From Delamere to Manchester

Return Fare ~ £10.60. Railcard £7.00

Off-peak Returns ~ £8.40-Railcard ~ £5.55

Mon to Fri (Sat ~ some variations)

am: 6.09 7.09 7.38 8.21 10.17 11.17

pm: 12.17 1.17 2.17 3.19 4.14 5.17

6.12 7.12 8.12 9.15 11.00

Delamere – Manchester

c.75minutes

#### From Delamere to Chester

Return Fare ~ £6.10 Railcard ~ £4.05

Off-peak Returns ~ £4.70 Railcard £3.10

Mon. to Fri (Sat – some variations)

am: 12.18 7.44 8.47 10.31 11.31

pm: 12.31 1.31 2.31 3.31 4.31 5.31 6.06

6.31 7.01 8.32 9.31 10.31 11.31

Cuddington to Manchester: 4 mins. later

Cuddington to Chester: 5 mins. earlier.

Off-peak travel from 9.30am

### **GHA Coaches**

*[Route 82] Mon – Sat ~ to  
Northwich*

opp. Abbey Arms 8.00am. Then 8.12  
am and 12 past every hour until 4.12pm  
Last buses: 5.17 & 6.22pm

*[Route 82] Mon – Sat ~ to Chester*

opp. Abbey Arms 7.40am. Then 9.00am  
and every hour until 5.00pm. Last bus  
6.05pm.

Buses leave Chester 32 minutes and  
Northwich 20 minutes before the above  
times.

Adult single Delamere to Northwich  
/Chester £2.60

Adult return Delamere to  
Northwich/Chester £3.70

Child Single “ “ £1.55

Child Return “ “ £2.20

Bus passes valid after 9.30am

*[Route 230] Mon – Fri ~ to Winsford*

Top End of Kelsall : 8.05am, 9.50am,  
11.20am, 1.20pm & 3.25pm

Dep. Winsford

8.30am, 10.15am, 12.00pm, 2.00pm &  
4.35pm

*[Route X20] Tues, Thur, Sat ~ to  
Cheshire Oaks. Top End of Kelsall:*

9.44am

### **Rural Bus Service**

**01606 871990**

**To book a journey please ring between 10.00 &  
11.30 am the day before you wish to travel.**

Fare: £2.40 each way/ £1.20 concessionary.

Free Travel 9.30 – 4.00 on production of bus pass.

#### Monday

9.00am Cote Brook, Oakmere, L.Budworth, Utkinton, Tarporley,  
Delamere to Winsford. Return 12.00pm

10.30am Cote Brook, Oakmere, Utkinton, L.Budworth, Utkinton,  
Tarporley, Delamere to Northwich. Return 1.30 pm

12.00 Return from Winsford; 1.30 Return from Northwich.

#### Tuesday

9.00am Crowton, Kingsley, Acton Bridge, Norley, Delamere to  
Winsford Return 12.00pm

12.30pm Crowton, Acton Bridge, Kingsley, Norley, Delamere to  
Northwich Return 3.00pm

#### Wednesday

9.00am Cote Brook, Oakmere, L.Budworth, Utkinton, Tarporley,  
Delamere to Northwich  
Return 12.30pm

1.30pm Tarporley, Oakmere, Delamere, Utkinton, L.Budworth, Cote  
Brook to Winsford  
Return 3.30pm

#### Thursday (Bus 1)

9.00am Kingsley, Delamere, Norley, Crowton, Acton Bridge to  
Northwich. Return 11.30am

### Other Routes

From Willington Corner ~ to Tarporley & Bunbury (via  
Beeston & Peckforton):

11.47am, 5.01pm

From Willington Corner ~ to Chester:

9.33am, 10.32am, 12.43pm, 1.02pm.

*Vale Royal's Concessionary Travel Scheme  
for Persons aged 60 & over and  
Disabled People*

**OLD PASSES EXPIRED ON  
31<sup>ST</sup> MARCH!**

**Bus Pass: Free Travel after 9.30am Mondays to  
Fridays and any time at weekends; half fare before  
9.30am Mondays to Fridays.**

**Railcard: Cost - £2.50 for 12 months – gives one third  
off fares for most rail services.**

***Bus Pass Forms, to be returned with proof of age,  
address and passport-size photographs, available  
from::***

***Wyvern House, Winsford (01606 867928) or  
Castle Park, Frodsham (01928 734440) or  
Information Centre, 1 The Arcade, Northwich  
(01606 353500)***

Usual disclaimers apply to this information.