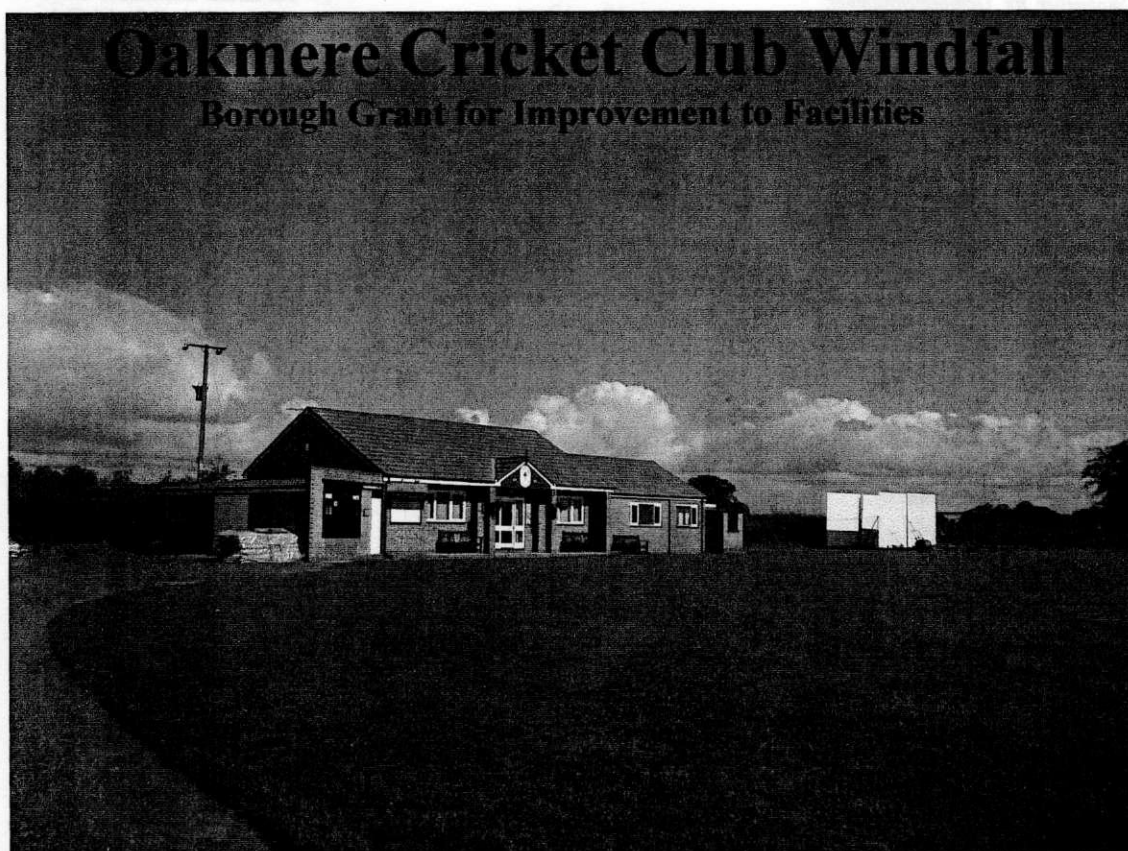


# Delamere and Oakmere

## News

Number 9

Oct/Nov 2006



### Oakmere Cricket Club Windfall

Borough Grant for Improvement to Facilities

Just before the end of the season Oakmere Cricket Club heard that their application for a grant from Vale Royal Borough Council had been passed.

The cost of improvements at the Overdale Lane ground – which include new covers, a disabled toilet, a disabled access ramp and wider doors, umpire facilities, a replacement storage area and a ladies' shower – had been calculated at £26,500.

Under its Rural Delivery Programme Vale Royal agreed to meet £18,720 of this. Thanks must go to club officials Peter Powell and Tony Newall for all their work in preparing the application. A happy end to a season in which the 1<sup>st</sup> XI finished 7<sup>th</sup> in Division I of the Meller Braggins Cricket League and the 2<sup>nd</sup> XI finished 9<sup>th</sup> in Division A.

### Ladies' Success

The Ladies' XI confirmed their reputation as the strongest side in the county by taking the Club Olympus Cheshire League title for the third year running. They have now won the championship 8 times in the last 20 years.

#### Contents

What's On.....	2
Oakmere P.C.....	4
Community Assoc....	4
Homewatch.....	4
Delamere Fern...	6
Souling.....	6
Charity Cycling.....	6

Obituaries.....	10
& Photo.....	11
The Quest....	13
From My Window...	13
Oakmere Project.....	13
Community Centre.....	13

Travel Information.....	14
Barn Dance.....	15
Helsby High School Fair...	15

**What's On**  
**October/November**

*All events in Delamere Community Centre, unless indicated.*

All club/society secretaries:  
*Please let me know well in advance the dates of your meetings for the following two months: ie, by 16<sup>th</sup> September for October/November, etc.(if you would like them included in this diary.*

Contact me on either:  
01829 752723, or by e-mail:  
robin.ackerley@btinternet.

Sunday 1<sup>st</sup> Oct.

**Harvest Festival Service**

Delamere Church  
10.30am

Tues., 3<sup>rd</sup> Oct.

**Harvest Supper**

7.30pm

*Hot Pot Supper*

*Followed by a sweet*

**£8 per head**

**Children £4**

Tickets from Church

Members

or from Anne Bold

01606 882649

Wed., 4<sup>th</sup> Oct.

**Golden Age**

**"Chairobics"**

Exercise Fun from a Chair!

2.00pm

Mon., 9<sup>th</sup> Oct.

**Community Centre**

Committee Meeting

7.15pm

Tues., 10<sup>th</sup> Oct.

**Women's Institute**

Talk by Mrs.J.Townend

*My Life as a Bin Baby*

7.30pm

Mon., 16<sup>th</sup> October

Meeting of

**Delamere Parish Council**

Delamere School

7.30pm.

Wed., 18<sup>th</sup> Oct.

**Golden Age**

Harvest Service

2.00pm

Wed., 1<sup>st</sup> Nov.

**Golden Age**

Lunch

12.30pm

followed by a Slide Show>

[please let Mrs.Riches (01606 882094) or Mr.Emerton (01270 668934) know by 22<sup>nd</sup> Oct., if you wish to attend.

Sat., 4<sup>th</sup> Nov

**Coffee Morning**

with Cake Stall, White Elephant Stall, etc

*in aid of Community Centre*

*Funds*

10 – 12am

*All Welcome*

Ring Pat or Derek Wheeler (01606 883631) for further details.

Mon., 13<sup>th</sup> Nov.

**Community Centre**

Committee Meeting

7.15pm

Sunday 12<sup>th</sup> November

**Remembrance Day**

**Services**

at Delamere Church

10.30am

and

at Oakmere Methodist

Church

6.30pm

Tues., 14<sup>th</sup> Nov.

**Women's Institute**

**Annual General Meeting**

7.30pm

Wed., 15<sup>th</sup> Nov.

**Golden Age**

Christmas Shopping Coach

Trip to the Lowry Centre,

Salford

Raffle on the Coach. Lowry Theatre + Café+Restaurant. War Museum nearby. Walk along the waterfront. (Coach leaves Community Centre at 10.30am. Leaves Lowry Centre at 3.30pm)

£6.

[Contact Mrs Riches or Mr Emerton (nos.above), if you are interested.

Mon., 20<sup>th</sup> Nov.

Meeting of

**Delamere Parish Council**

Delamere School

7.30pm

Wed., 29<sup>th</sup> Nov.

**Golden Age**

Delamere Derby

Fun Afternoon with some remarkable racehorses.

2.00pm

Wed., 13<sup>th</sup> Dec.

**Golden Age**

**Christmas Lunch**

Members Only

**Kelsall Social Club**

**Every Saturday night**

**Live Entertainment**

(Male/female/duo singers)

from 9.15pm

**Family treasure Hunt –**

Late August

**Cash Bingo**

Every Thursday evening

For further information on all

events at Kelsall Social Club

please call 01829 752045

**Jonathan's Discos**

*for all your entertainment needs:*

*Christenings – Weddings +*

*Birthday Celebrations – Parties*

*Special rates available.*

*Bouncy Castle also available.*

*All fully insured*

Call Jonathan for more information

01606 76153

**COLD CALL WARNING**

A male 'cold called' at the home of a Sandiway resident recently offering to renew fascias and soffits. The work was completed (by up to 5 males) and paid for the next day. The men then advised that the roof needed repairing and asked for a much larger sum of money, which was paid in advance. The following day they took a further large sum of money, did none of the work and have not returned. There are no contact details.

This type of doorstep trading is illegal!

**DO NOT BUY FROM A COLD CALLER.**

If you have recently received a visit from a male(s) offering similar work, possibly driving a transit type van, and can give a description or part/whole vehicle registration – the police would like to hear from you.

Contact Frodsham CAT on

0845 458 6393 This is an answer phone.

Leave a brief message with your name and contact number. An officer will return your call.

**CARAVAN THEFT**

A caravan was stolen in September from a property in Willington in daylight hours. Caravan theft is big business and it appears that security devices present little problem to the most determined thieves. Stolen 'vans are particularly popular with a certain section of the community and often disappear without trace. There has been a number of such thefts in the area recently.

If you see any suspicious activity, let the police know at once.

# SWP ELECTRICS LTD

• SOCKET LIGHTS REWIRES •

• TESTING AND INSPECTION OF PROPERTIES •

**NO JOB TOO SMALL, WE DO THEM ALL**

✓ **PROMPT RELIABLE SERVICE**

✓ **FREE ESTIMATES**

✓ **REFERENCES AVAILABLE**

**Tel 01829 781736 or 01928 740237**

Stephen Warburton

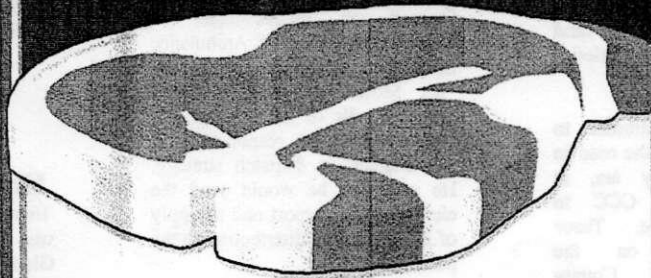
SWP Electrics

Common Lane, Duddon, Tarporley CW6 0HG



BSI PART P DOMESTIC ELECTRICAL INSTALLER APPROVED

**OUR REPUTATION  
IS AT STEAK!**



**DUTTON'S**  
*Quality Meats*



4a Church St, Kelsall  
Opp. Dr Surgery  
**01829 751355**



## Oakmere Parish Council

### Report on Tarmac Site Visit

The Site Visit to Tarmac took place on Monday 31<sup>st</sup> July at 10 a.m.

Mr Walter Thomas, Mr John Bradshaw and Claire welcomed the following people at the Crown Farm Quarry:

Mrs A.Ford; Mrs A Lupton; Mrs K.MacVicker; Mr A.Overland; Councillor D.Parks-Smith and the clerk. Apologies were given for the members who were unable to attend. Ian Garton, the Cheshire County Council Control Officer, was also unable to attend.

After a preliminary talk the group was taken to the Bagging Plant at Crown Farm and a tour of the site. This was followed by a visit to Fishpool Quarry and then to the Fourways Quarry.

#### Educational

Educational packs have been produced for schools visiting the Quarries. These are for Key Stages 2/3 of the National Curriculum.

#### Bagging Plant

There has been an increase in vehicle movements during recent months due to an extra high demand for the products. On a top day in July there were 37 vehicles. The Bagging Plant employs 6/8 people mainly from Northwich and Winsford. The automated robotic system of bagging was extremely interesting. Two lines are set up to fill 100 bags per minute on each.

#### Sand Washing Facility

This facility now only operates at the Fourways Quarry where there is washed concrete sand. The sand at Crown Farm is of an inferior quality.

#### Road Junction

Tarmac has a commitment to improve the surface of the road in Stonyford Lane. They are, at present, waiting for CCC to approve the scheme. These improvements are on the recommendation of County Highways.

#### Problems

There have been problems with youngsters swimming and people shooting on the land. No one has permission to do either and, therefore, it is advised that incidents should be reported by ringing 999.

#### Fishpool

Extraction has ceased and the site is being restored. They have 5 years to complete restoration.

#### Fourways Quarry

No more dredging is taking place and the dredger is waiting to be

sold. The deposit is much thinner here than at Crown Farm. The face is 3m high.

During reinstatement it will be planted as a commercial forest. William Fergusson has taken over the responsibility for the Fourways planting.

It has been a very busy year with demand being high, mainly owing to the work going on for the Liverpool City of Culture project. The quarry has taken up the slack from other quarries and stockpiles have gone.

Automated equipment has been brought into cut and stack roots, branches and stumps of trees into separate piles which are then taken away to Ellesmere Port where they are used to generate electricity. The same will happen this winter.

#### Crown Farm

Life until 2015. The face is 13m high.

There has been an increase in dust caused by remedial work on the bank near to the Golf Course when the land was exposed. The soil was stripped in July over a period of 3 weeks. There has been a problem in many areas with birch pollen blowing over from Norway.

#### Other General Comments

The Mineral Development framework is intended to involve local people. Formal Liaison Committees are set up in some areas, but there are none in this area- the newsletter is a good medium to report on the site visit.

### Ambulance Service Response Times

Mr Ian Moses had been invited to address the meeting and give the Council an update on the longstanding issue of Ambulance Response Times.

Mr Moses presented a report giving details of the number and type of calls, the response times and changes in dispatch strategy. He said that he would send the clerk a written report and a supply of lightsticks for distribution to the parishioners.

### The Little Wood

At present council members inspect the wood at regular intervals to check on the safety of the paths and boardwalks. However it would be very helpful if members of the public could report anything they consider hazardous. Please contact the Parish Clerk on phone 01606 883645.

[For further information on Tarmac's activities in the area please see the June/July 06 edition of this Newsletter]

## Trustees' Annual Report for Delamere Community Association.

### Financial Year May 05-April 06

The Community Centre Association has had a very successful year with regards to improvements to the Centre. However, this was at the cost of expenditure slightly exceeding income.

United Utilities had a small brick building at the centre which they had no further use for, so we were able to purchase this for £1. Legal fees and land registry caused the bill to rise to £400. We have been able to secure a grant from our local council to make the building good; this has enabled us to use it for storing folding chairs and trestle tables. This will make more space in the Centre for the brownies and guides to put their equipment in.

We are also hoping to obtain the help of our local council to purchase 60 new chairs which will provide extra comfort for our elderly users in the Centre.

In the year 2005/6, with the help of a grant, we were able to put in a disabled toilet, a hearing loop system and a ramp at the entrance of the Centre.

Our Community Centre is used every day and provides a wide range of activities for the local community. We have a very good working committee who give their time to the Centre and without the help of certain people we would struggle to function.

*A Community Centre like ours is an asset to the village.*

#### Trustees:

Mrs P.Wheeler  
Mr D. Gore  
Mr D.Rutter  
Rev. D. Perkes

### Homewatch Vacancy

Ever since the Homewatch scheme was introduced to the area John Gladstone has served as lead co-ordinator for Delamere. John has at last decided to retire from the post (though he plans to continue as co-ordinator for his patch). A volunteer replacement is urgently sought for this worthwhile role in the local community.

Meanwhile John is to be thanked for all his efforts over the years; John in turn would like to thank his team of Homewatchers for their help.

If you would like to know more about what is involved, please contact John on 01829 752651.

# *The Fishpool Inn*

*Traditional Ales                      Garden*

**Open: 11.30 – 3.00 & 5.30 – 11.00 Monday to Friday**

**All Day Saturday & Sunday**

**Food Served All Day at Weekends.**

**Senior Citizens Menus Available ~ £5.95**

**Telephone: 01606 883277**

## **DELAMERE STORES**

**13 Station Road, Delamere, Northwich, Cheshire CW8 2HU**

**Tel: 01606 882226**

*Note the changes to opening/closing times below.*

*A traditional village store and post office offering an extensive range of fresh produce, wines and beers. The store has recently expanded and now offers a wide range of delicatessen products, including an in-store bakery and a full menu of fresh hand-made sandwiches, which are prepared as you wait.*

*Come and visit us.*

**WE ARE OPEN: 6.30am – 6.30pm Mon. – Thurs.**

**6.30am – 6.00pm Friday. 6.00am – 6.00pm Saturday.**

**7.00am – 2.00pm Sunday**

## A Tale of a Fern

Robin Ackerley

When I was young there grew in Delamere School garden an unusual fern, known because of its shape as the "Umbrella Fern".

It had been planted there, I remember being told, in the nineteenth century by the rector and had been taken from a plant in the Old Rectory garden.

The rector, the Rev. Fox, was born in Derbyshire in 1805 to a well-to-do family who shortly after his birth moved to Osmaston Hall in what is now Derby. As a young man Fox went up to Christ's College, Cambridge to study to become a clergyman. In 1829 he graduated and soon afterwards became Vicar of Osmaston.

Then, in the *London Gazette* of April, 1838 it was reported that *"The Queen has been pleased to present the Rev William Darwin Fox, M.A. to the rectory of Delamere in the diocese and county of Chester"*. Fox was to remain Rector of Delamere, in name at least, if not always in practice, for the next thirty-five years.

While at Cambridge Fox had formed a close friendship with his second cousin, a Shrewsbury man four years his junior, who, having spent two years in Edinburgh supposedly studying medicine, but having shown no more aptitude for study there than he had at school, had proceeded to Cambridge to prepare for a career in the church. The two cousins were united in their love of natural history and spent much of their time, so it appears, collecting beetles.

The two men evidently got on well together, the younger one describing cousin William as "a clever and most pleasant man". He stayed with the Foxes at Osmaston Hall and later he was invited to stay at the Rectory at Delamere. The name of the cousin was Charles Darwin.

### Voyage of The Beagle

In 1831 the 22 year-old Darwin was invited to accompany the leader of an expedition to South America. The voyage was to last nearly five years and gave Darwin, already an enthusiastic amateur naturalist, the opportunity to collect a mass of specimens of exotic flora which he brought back with him to England. It was from this collection that the umbrella fern came which he later gave to his cousin to plant in his garden in Delamere. Another of the plants was donated to the Royal Botanical Gardens at Kew. The discoveries Darwin made on his voyage and the conclusions he drew from them were to result over twenty years

later in the publication of the *Origin of Species*, one of the most important and influential books on evolution ever to be written.

### Rector Fox

Though he never achieved the eminence of Charles Darwin, William Fox also made a name for himself in his later years.

By his first wife Harriet, whom he had married in 1834, Fox had five children. Harriet, who died in 1842, is buried in Delamere churchyard. In 1846 Fox married his second wife, Ellen. She was to provide him with a further twelve children. Spacious though the Old Rectory was, it could hardly accommodate a family of seventeen children (large even by Victorian standards) plus servants, of course and it is said that the family overflowed into the neighbouring Rectory Farmhouse.

From 1861 onwards the Rector of Delamere seems to have spent more of his time on the Isle of Wight than in his Cheshire parish. Whether this was to escape from his huge family, or whether, as is more likely, it was so that he could indulge in his passion for collecting fossils is unclear. What is certain is that he began to establish a growing reputation as an amateur palaeontologist as he delved into the relics of dinosaurs on the island. It has been claimed that more species of dinosaur have been named after William Darwin Fox than after any other Englishman.

It is not easy to reconcile Fox's obsession with dinosaur fossils with his religious vocation, but it seems that many clergymen at the time were naturalists, justifying their interest by claiming that it was part of their duty to explore the wonders of God's creation. A contemporary put it more bluntly, stating that with the Reverend Fox it was "always the bones first and the parish next".

In 1873 he left Delamere and took up a curacy at Kingston on the Isle of Wight where he remained until his death in April 1880.

### ...And The Fern

still survives in our garden and also in one or two other places in Delamere, though the one at the school disappeared some years ago.

I paid a visit not long ago to the Old Rectory to see if there were any traces of the original umbrella fern. The house has now of course become two dwellings. Both the families living there were most helpful, as keen to find the fern as I was, but, though there were ferns aplenty in both gardens, of the original one there was no trace. Or was there? To be continued...

## Souling

Hallowe'en will soon be upon us and many households will be disturbed at night by a knock on the door and children wearing hideous masks demanding a "trick or treat".

Older ones among us, at least those brought up in rural mid-Cheshire, will remember a far different, and much older, custom. This involved children dressing up, blackening faces and, at least in the more distant past, carrying a turnip lantern and going from house to house singing souling songs.

I'd love to be proved wrong, but, so far as I can tell, the custom has now died out and with it the words of many of the old songs. These had been handed down by word of mouth over the generations and those that survive perhaps do so only in the memories of a few of us oldies.

I can recall two or three souling songs, plus snatches of others, and a neighbour recently gave me the words of a "Soul-caking" play performed in Comberbatch. Songs would vary from village to village and what we called "souling" was known elsewhere as "soul-caking".

As I understand it, the tradition dates back to the days when poor people would go round asking for money to pay the priest to pray for the souls of their dead kin.

Instead of including the ones I remember, I thought I'd put out a request: if you know the words – and tunes perhaps – of any souling songs, perhaps you could let me know. Then I'll put them together and try to produce a special souling edition in time for next year's Hallowe'en, next back end.

Robin.

## Charity Cycle Event

Over 30 riders took part in the Delamere Cycle Challenge on 2<sup>nd</sup> July. Beginning and ending at the Old Pale the event covered 15 miles, mostly through the forest. It was supported by the Forestry Commission, who agreed the route and led the riders. 30 riders took part (including 6 children).

Over £10,000 has now been raised, the money to be divided equally between Leukaemia Research and the University of Liverpool Leukaemia Research.

For anyone wishing to make a contribution – and it's still not too late – the website address is: [justgiving.com/delamerecyclechallenge](http://justgiving.com/delamerecyclechallenge).

## **WILLINGTON FRUIT FARM**

### **ALL HOME GROWN APPLES**

COX'S ORANGE, BRAMLEY, HOLSTEIN  
COX, SPARTAN, ROYAL GALA, KIDDS  
ORANGE, CHIVERS DELIGHT, RED  
PIPPIN, JAMES GRIEVE & KATY  
HOME PRESSED APPLE JUICE

**FREE!**

**APPLE TASTERS**

**TRY BEFORE YOU BUY**

ALSO CHESHIRE POTATOES AND A FULL  
RANGE OF FRESH FRUIT & VEG, SALADS,  
LOCAL HONEY, CHESHIRE FARM ICE  
CREAM, FRESH CREAM, CHESHIRE  
YOGHURT & CHEESES, WELSH FARMHOUSE  
YOGHURT, FREE RANGE EGGS, JAMS &  
PRESERVES, PRE-PACKED CHEESES, HERB  
PLANTS, PERENNIALS

Visit our Small Herb Garden. Browse around the  
herbs in pots (from £1.10)

**OPEN: 10am – 5.30pm**

**EVERY DAY**

*Signposted to Willington Fruit Farm*  
WINSORS, CHAPEL LANE, WILLINGTON,  
Nr.KELSALL,CHESHIRE

Tel: 01829 751216

## **T.L.SERVICES**

### **Plastering & Tiling**

**Bathrooms & Kitchens,  
etc.**

*For a professional, friendly  
service*

*For advice and quotations*

*please ring:*

**01928 787799**

*or*

**07786 688915**

## **J.W.Landscapes**

*Jamie Wright*

❖ *BLOCK PAVING*

❖ *FLAGGING*

❖ *FENCING*

❖ *GATES*

❖ *DECKING*

❖ *TURFING*

❖ *TREE WORK*

❖ *FREE ESTIMATES*

❖ *RELIABLE SERVICE*



*Little Budworth, Tarporley, Cheshire*

**Tel: 01829 760223 & 07955 219969**

## **The Telephone Man**

**Experienced & Reliable**

**Installations & Repairs**

**Office Moves & Changes**

**Telephone Extension Sockets  
Anywhere Around Your  
Home**

*Please call Ken on*

**01606 888343**

**(Oakmere, Cheshire)**

**Mobile: 0776 4630088**



# THE NORTH-WEST'S FAVOURITE FOR CARAVANS AND OUTDOOR LEISURE

**SET IN OVER 10 ACRES OF  
BEAUTIFUL CHESHIRE COUNTRYSIDE!**

- **MASSIVE SHOWROOM - OVER 35 CARAVANS UNDER ONE ROOF!**
- **GREAT CHOICE OF USED CARAVANS FROM ONLY £1995**
- **HUGE LEISURE SUPERSTORE - EVERY OUTDOOR ACCESSORY YOU NEED**
- **OUTDOOR CLOTHING - TOP BRANDS AT THE LOWEST PRICES**
- **1000s OF GIFT IDEAS - GAMES, BOOKS, CARDS & MORE**
- **ROMANY TEAROOM - DELICIOUS HOME-MADE MEALS & BREAKFASTS!**
- **AWARD-WINNING SERVICE DEPARTMENT**
- **AWNING SHOWROOM**



On the A556 Chester Road,  
Delamere Forest, Nr. Northwich,  
Cheshire CW8 2HB

**Open 7 days**

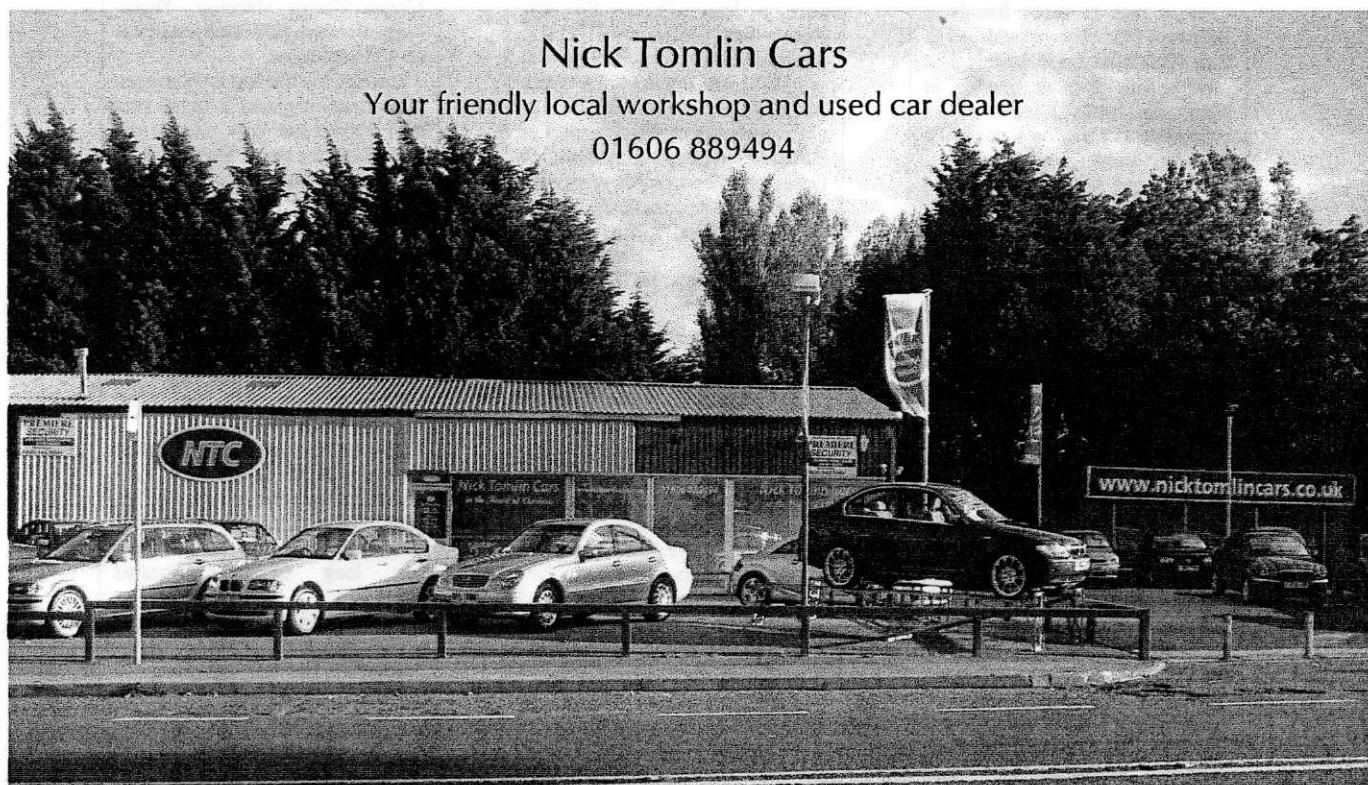
**The Great Outdoor Experience!**

**Tel: 01606 882032**

Web: [www.harringtons-caravans.co.uk](http://www.harringtons-caravans.co.uk)

Email: [enquiries@harringtons-caravans.co.uk](mailto:enquiries@harringtons-caravans.co.uk)





## Nick Tomlin Cars

Your friendly local workshop and used car dealer

01606 889494

Specialises in used BMW & Mercedes along with a wide selection of other used vehicles

- Car servicing offered at competitive rates.
- All makes and models catered for.
- Free collection and delivery in the local Oakmere area

## ROSE CLOCKS

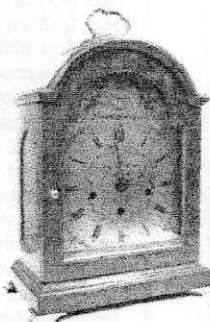
*Always a fine range of  
antique and reproduction  
clocks for sale.*

Quality clock & barometer  
repairs by a  
British Horological Institute  
award winning horologist  
*Collection-delivery service*

**Tel 01829 741747**

(Great Barrow, near Tarvin)

**www.roseclocks.co.uk**



### Arthur Ellison

Arthur's neighbours in Mere Crescent and his many friends at Delamere Church were saddened to hear of his death in August.

Arthur was born in Everton in 1911. He began work as an apprentice printer for Crawford's Biscuits, rising to compositor, machine-man and foreman and he remained with the same employer, war service apart, for forty-seven years.

In 1935 he married and he and Edna were together for fifty-nine years until her death in 1994.

During the war he was in the Pioneer Corps and took part in consolidating the beach-heads in North Africa, Sicily and Normandy.

Shortly after his retirement Arthur and Edna moved to Delamere, first of all to Eddisbury Hill Park before settling in Mere Crescent. While in Liverpool he had been a faithful member of the Methodist church, but at Delamere he joined the congregation of St. Peter's, where for a time he served as a sidesman. Younger members of the congregation will recall with affection how Arthur, now well into his nineties, joined their "orchestra" at family services and sat among the children playing the drums.

Arthur was a lifelong Everton supporter even though most of his family, apart from his son Tony, supported Liverpool.

On July 2<sup>nd</sup> he celebrated his birthday - his ninety-fifth - with his family as was the tradition, but his health had already begun to fail and he passed away on 22<sup>nd</sup> August.

His son concluded the tribute, which was read at his funeral, with the following words:

"You cannot do justice to a lifetime's work, love and commitment in a few minutes but this will have helped us to remember Arthur, husband, father, grandfather, great-grandfather - a source of pride in four generations of Ellisons. He refused promotion and went through the war as a private soldier, but he is now promoted to glory with the Lord. He is one of the last of that generation which knew the hardship of two wars and in between. May he rest in peace united with Edna, his family before him and with all the saints in Heaven".

### Derek Bettley

Derek Bettley died in September after a long illness. He was seventy-five.

Derek was born in Delamere in July 1931 and attended Delamere School from 1936 to 1945. He had vivid memories of the war years in Delamere, of night-time visits to the air-raid shelters and of picking up pieces of shrapnel the next day.

He was always interested in transport and after leaving school he worked with his father and grandfather in the family haulage business. He did his National Service in the Royal Signals where he served as a driving instructor.

After National Service Derek joined Marley Tiles working in the transport department and remaining there for several years. He then worked for his uncle at Tarporley before starting his own haulage business. He continued with this until his retirement.

Derek was an accomplished athlete in his younger days and he even ran a four-minute mile not long after Roger Bannister ran the first sub-four-minute mile in the 1950s.

In 1956 he and Esmee were married at Delamere Church and they recently celebrated their Golden Wedding. A very happy family man, Derek loved nothing more than being involved in his sons' activities and taking pride in their achievements. All three, Roger, Ian and Stephen, attended Delamere School, as their father had done before them.

In 1975 Derek and Esmee bought some land on Eddisbury Hill and there they built the family home. They remained there until 1993 when they moved to Sandbach in order to be nearer to their sons and grandchildren.

In their later years, family apart, one of their great loves was travel: they often visited Los Gigantis in Tenerife and they enjoyed cruising, visiting Seattle, the Caribbean, Rio, Singapore and Hong Kong.

Derek will be sadly missed by his wife, Esmee, his three sons and his five grandchildren as well as by his many friends in Delamere.

### Bernard Jeffs

Only a few days after travelling to Malpas Vintage Machinery Steam Rally Bernard Jeffs died suddenly on 13<sup>th</sup> September.

Through his lifelong involvement with steam engines, Bernard was well known not only locally but throughout the North West.

He owned Foden and Rushton & Hornsby steam tractors, a water bowser, a press baler and an Oliver 80 vintage tractor. He kept these at his home, Lodge Farm in Oakmere.

Bernard was a clever engineer, working on and restoring the machines in his collection. He could indeed be called "the Fred Dibnah of Delamere"; in fact the two met often at steam rallies.

He was born at the farm, which had been in his family since 1914 and each year he would use his threshing machine for his field of oats, keeping alive a tradition that has long since disappeared elsewhere.

He had many loyal friends both locally and in the world of vintage tractors. He was described by acquaintances as "one of the best mates I ever had" and "a fantastic friend". His partner Jean said he was "a true country gentleman...with a real love of the countryside".

Evidence of the esteem in which he was held lay in the huge number of people who attended his funeral, many from the vintage tractor fraternity who had travelled great distances to be there.

Bernard's coffin was brought to church on the water bowser trailer towed by his beloved Foden steam tractor. The journey from the farm to St. Peter's church took thirty minutes. To watch it slowly travelling up Abbey Hill and turn into the church drive was a unique and a deeply moving experience.

The parish has lost one of its great characters.

Our sympathies go out to all the Jeffs family and to Jean, Bernard's partner.

### Delamere Community Centre

#### Contact Numbers

Badminton (Tue am) 01606 889876

Badminton (Th.Eve) 01606 883515

Bingo(Sat 8.00pm) 01606 888877

Prize Bingo - Every 4th Tuesday

Bridge(Mon. pm) 01606 889872

Bowls-Outdoor 01606 551905

Bowls Indoor (Mon 7.30)

01829 751429

Brownies/Guides(Wed.Eve.)

01606 888449

Golden Age (Alternate Weds)

01606 882094

Snooker (Any time for members)

01606 888029

(Veterans - Mon & Sat A'noons)

Whist (Thurs A'noons) 01606

888889

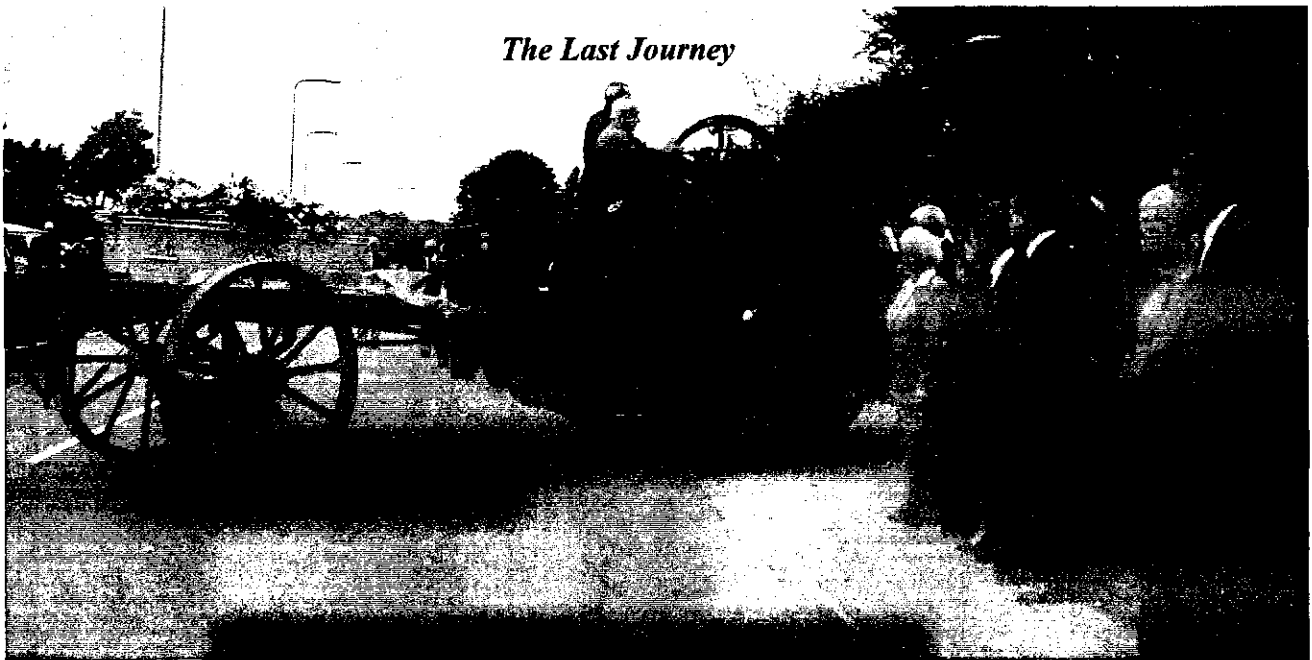
Whist( Fri Eve) 01606 43754

W.I.(2<sup>nd</sup> Tues in month)

01606 882183

To Hire the Hall:

01606 882485



*Bernard Jeffs' Foden steam wagon brings him to Delamere Church on 22<sup>nd</sup> September.*

**THIS SPACE  
TO LET.  
Advertise Your  
Business  
in  
*Delamere & Oakmere News*  
for**

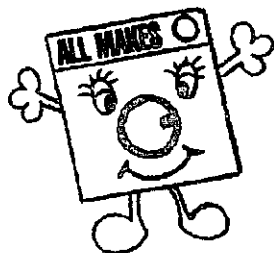
**£6.50 Quarter Page**

**£12.00 Half Page**

**Appears every 2<sup>nd</sup> month**

Phone 01829 752723 for details.

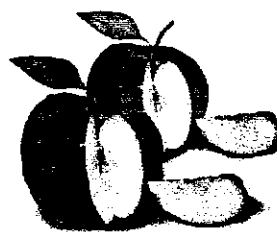
## ACKOMATICS



WASHING MACHINES,  
TUMBLE DRYERS  
&  
DISHWASHER REPAIRS

*Also New & Re-conditioned  
Machines available for sale or  
rental  
Reasonable Rates*

Call Paul on 07976 969223  
Or 01829 760355  
Cotebrook, Tarporley



## Cheshire Apple Juice

Cheshire's most pure and natural apple juice  
made from the finest quality apples grown on  
rich Cheshire Soils.

Ideal for a breakfast juice, or an aperitif  
at any time of the day or night.

Choose from over 10 varieties  
of apple juice all with their own individual  
character and flavour.

No artificial colourings or preservatives,  
no sugar is added.

Grown, Pressed & Bottled at Eddisbury Fruit Farm,  
Kelsall, Cheshire. Telephone 01829 751300  
[www.eddisbury.co.uk](http://www.eddisbury.co.uk)



## VALE ROYAL FARMERS' MARKET

EDDISBURY FRUIT FARM  
YELD LANE, KELSALL

EVERY THIRD SATURDAY  
OF THE MONTH  
26 Stalls Local Food & Craft

21st October 2006  
18th November 2006  
16th December 2006



**P&D (Executive)**



### Travel

Little Budworth

- Airport Service
- Contract Work
- Private Parties
- Golf Trips
- Plenty of Luggage Room
- 8 Seat Max
- Wide Seat
- Electric or Standard
- Wheelchair Access (Auto Lift)
- DVD and CD
- Fridge on Request



Tel: 01829 760445

Mobile: 07889 081639



## The Quest

Welcome to what I hope will be a regular feature of finds in our area. It was whilst watching a programme on metal detecting some years ago that I became hooked. What it must feel like to find a Roman Coin lost some 1800 years ago, I commented. Santa must have been listening because that Christmas he obliged with a detector and so began the quest. Some 2 years on and many hundreds of hours and as many £'s spent on equipment. The search still goes on. In the meantime however as well as the bags full of junk uncovered there have been finds of interest and historical

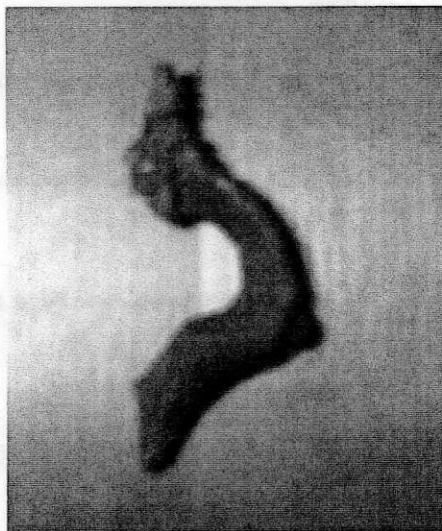
value. It is these items which I hope to share with you in future editions of this Newsletter.

The find highlighted in this edition is a Roman 'Wirral type' Brooch, so called because of the 40 or so finds to date 70% have been on the Wirral. The remainder have generally been found on Roman military sites along Hadrian's Wall. It is thought that the brooches were made on the Wirral by a local craftsman or migrant worker who may have sold them to Roman soldiers at what was the Roman harbour fort at Meols. They may then have been transported along the coast to the northern frontier. It is interesting to note that only 1 has been found in

Chester. The item itself is made from a copper alloy and is decorated with a rectangular panel containing 3 long strips which were in filled with enamel, on this example only the orange and white have survived. Other brooches have included red, yellow, green and blue enamels. The Delamere brooch has been dated from 150-200 AD by the Northwest Finds Liaison Officer for the Portable Antiquities Scheme.

I would also like to note here my appreciation to the area landowners who graciously permit this local research. That Roman coin has to be out there somewhere.

Alan Knowles



Two views of the

### From My Window

Great news! The female pheasants I thought had gone flew up from long grass on 20<sup>th</sup> September and are coming back to feed near the house. The male is looking much perkier; his coat is bright and his tail feathers have regrown.

The great tits have taken over from the blue tits on the peanut feeders. I will have to put up more feeders in another part of the garden.

Three buzzards floated overhead on the 1<sup>st</sup> September, a sight becoming more familiar in this area.

During the hot sunny days of June and July beautiful dragonflies and damselflies flew and hovered over the pond. These beautiful creatures, whose adult life lasts only a few weeks, have been seen laying a few eggs at the sides of the pond just under the waterline.

A grass snake was spotted curled



Roman Wirral brooch

up, slumbering down a pipe which contains a stop tap.

Not many ladybirds have been seen this year, but butterflies and moths have enjoyed the abundance of flowers in gardens and hanging baskets.

Hundreds of Canada geese fly over from Oakmere Lake towards Norley in the morning, returning at night. I love their calls and flying formations.

More nest boxes need to be put up before the onset of winter to give the birds more protection. I have also put up an old wicker basket high under an open shed, hoping the ring doves will use it.

D.D.

### The Oakmere Project

Oakmere Methodist Church is hoping to become a place of pilgrimage for people who have been walking through the forest. Walkers are invited to come to the Church in Abbey Lane, Delamere and enjoy a cup of tea and refreshments and fellowship. If

found in Delamere

they choose, they may take part in a service.

The first such event has already taken place when on the evening of 21<sup>st</sup> July a group of over thirty walkers called in at the Church.

Anyone hoping to pay a visit should contact Rev. Ann Kenton on 01928 788277 or Ann and Eric Wright on 01829 732950.

The annual Remembrance Service will take place at 6.30pm on Sunday, 12<sup>th</sup> November.

### Community Centre

As appears in the *What's On* diary, the Community Association is holding a fund-raising coffee morning in early November.

Although the Centre is a very popular venue, as can be seen from the list of member clubs on p.10, it still needs financial support if it is to continue running successfully.

The hard work of just a few people keeps the Centre going. Please give it your support at this event.

## Travel Information

### Trains

#### From Delamere to Manchester

Return Fare ~ £9.65. Snr. Cit. ~ £6.35.

Cheap Day Returns ~ £7.40-Snr. Cit. ~ b£4.40 (Mon to Sat).

dep. 10.15 am arr. 11.30am

then every hour until

dep. 5.15pm arr. 6.30pm

then: 6.12pm &

every hour until 9.12pm

Last train @ 11.00pm

#### From Delamere to Chester

Return Fare ~ £5.55. Snr. Cit. ~ ££3.65

Cheap Day Returns ~ £4.10 Snr. Cit. ~ £2.70 (Mon. to Sat).

dep. 10.31am arr. 10.52am

then every hour until dep. 11.31pm

Cuddington to Manchester: 4 mins. later

Cuddington to Chester: 5 mins. earlier.

### Buses

#### Whitegate Travel

Single Full Fare: £2.40

(Tuesdays only - to Northwich)

dep. Frith Avenue 9.20am

Eddisbury Hl Pk 9.30am

Abbey Arms 9.35am

then via Little Budworth, Whitegate,

Hartford to

Northwich Watling St. 10.37am Sainsburys

10.40am

Return to Delamere:

dep. Sainsburys 12.10pm

Watling St. Stand D 12.23pm

arr. Delamere 1.35pm

#### GHA Coaches (formerly Arriva)

Before buying a return ticket on this route make sure it's valid for the return journey as this may not be run by the same company.

[Route 82] Mon - Sat ~ to Northwich

opp. Abbey Arms 8.00am. Then 8.12 am

and 12 past every hour until 4.12pm Last

buses: 5.17 & 6.22pm

[Route 82] Mon - Sat ~ to Chester

opp. Abbey Arms 7.40am. Then 9.00am and

every hour until 5.00pm. Last bus 6.05pm.

Buses leave Chester 32 minutes and

Northwich 20 minutes before the above times.

[Route 230] Mon - Fri ~ to Winsford

Top End of Kelsall: 8.05am, 9.50am,

11.20am, 1.20pm & 3.25pm

Dep. Winsford

8.30am, 10.15am, 12.00pm, 2.00pm & 4.35pm

[Route X20] Tues, Thur, Sat ~ to Cheshire

Oaks. Top End of Kelsall: 9.44am

Day Ticket Adult: £3.30; Child £1.60; Conc. £1.65

Child £1.60 Conc. £1.65

### Rural Bus Service

01606 871990

To book a journey please ring between 10.00 & 11.30 am the day before you wish to travel.

Fare: £2.20 each way/ £1.10 concessionary.

#### Monday [Bus 1]

9.00am Cote Brook, Utkinton, L. Budworth, Tarporley, Delamere to Winsford. Return 12.00pm

10.30am Cote Brook, Oakmere, Utkinton, L. Budworth, Utkinton, Tarporley, Delamere to Northwich. Return 1.30 pm

#### Tuesday [Bus 1]

9.00am Crowton, Kingsley, Acton Bridge, Norley, Delamere to Winsford. Return 12.00pm

12.30pm Crowton, Acton Bridge, Kingsley, Norley, Delamere to Northwich. Return 3.00pm

#### Wednesday

9.30am Cote Brook, Oakmere, L. Budworth, Utkinton, Tarporley, Delamere to Northwich. Return 12.30pm

1.30pm Tarporley, Oakmere, Delamere, Utkinton, L. Budworth, Cote Brook to Winsford. Return 3.30pm

#### Thursday [Bus 1]

9.00am Kingsley, Delamere, Norley, Crowton, Acton Bridge to Northwich. Return 11.30am

### Other Routes

From Willington Corner ~ to Tarporley & Bunbury (via Beeston & Peckforton):

11.47am, 5.01pm

From Willington Corner ~ to Chester:

9.33am, 10.32am, 12.43pm, 1.02pm.

#### Vale Royal issue Travel Passes for Senior Citizens.

Any one of:

Half fare bus pass

Rail Card (£12)

Taxi Voucher for rural areas

Vale Royal published details of the new concessionary fares at the end of March. These were sent out to all concerned at that time. If you have not received them, contact Julie Richards (01606 867928).

Usual disclaimers apply to this information.



## **Barn Dance**

**Friday, 6<sup>th</sup> October, 2006**

In aid of Network Gloria, a registered charity supporting special needs families in Romania.

Delamere Community Centre

Station Road, Delamere

Dancing to

**THE ACME BAND**

With a caller to help with the dances

**7.30 to 11.30pm**

### **RAFFLE**

(Donation of prizes welcomed)

Nibbles and a dessert will be provided, but please bring your own drinks.

**TICKETS £7.00**

**Under 14s £3.50**

Available from Gloria or Robin Ackerley

01829 752723

**Helsby High School**

**Parents' Society**

welcome you

to a

## **Craft Fayre**

An event to help raise money  
for the children of the school.

on

**Sunday 5<sup>th</sup> November 2006**

**11am to 3pm at**

**Helsby High School**

Everyone is welcome to attend.

**Lots of stalls with wonderful gift ideas for**

**Christmas...or any time**

Ample off-road parking.

**Come and have lunch with us -**

light refreshments will be on sale.