

ISSUE 50 | WINTER 2020



DELAMERE
& OAKMERE

NEWS

IN THIS ISSUE

THE HATCHMERE BEAVERS

THE MAGIC METHODISTS OF DELAMERE FOREST

THE SECRET HISTORIES OF PALE HEIGHTS



PURCHASE YOUR PERFECT REAL CHRISTMAS TREES IN **DELAMERE**

24TH NOVEMBER - 20TH DECEMBER

At Delamere Station House Cafe, Station Road
Delamere, Cheshire, CW8 2HZ
& Forest Lane, Norley, Cheshire, WA6 6NF

WHOLESALE ENQUIRIES

01829 751592

www.ddforestry.co.uk

DELAMERE
STATION HOUSE
EAT. RELAX. DRINK.

Why not pop in for a glass of mulled
wine and a mince pie with the family
at **Delamere Station House Cafe.**

www.delamerestationhouse.co.uk



IN THIS ISSUE

ANSWERS TO THE QUIZ & CROSSWORD	4
FOREWORD	5
FORTHCOMING EVENTS	8
LETTER FROM THE RECTOR	9
ST. PETER'S NOTICEBOARD	11
ST. PETER'S 100 CLUB	10
D&O CALENDAR	10
DELAMERE WI	12
THE VILLAGE CAROLLERS	12
COMMUNITY ASSOCIATION NEWS	13
DEVELOPMENT ACTIVITY NEWS	13
PARISH COUNCIL NEWS	14
COVID UPDATES	16
THE LINMERE VISITOR CENTRE AND CAFÉ	18
TAKING LEARNING OUTDOORS	20
A HOME OF YOUR OWN	21
LOCKDOWN ARCHAEOLOGY PART 2	22
THE MAGIC METHODISTS OF DELAMERE FOREST	24
THE SECRET HISTORIES OF PALE HEIGHTS	26
A CHILDHOOD DREAM BECOMES A REALITY	30
JADES JARS	32
WILDLIFE IN THE PARISH	34
NATURE NOTES	36
THE HATCHMERE BEAVERS	37
CROSSWORD	38
QUIZ	39



SUNDOWN, THE FOOTPATH FROM HARROW HILL

RAY DOWNHAM PHOTOGRAPHY

DEDICATED TO THE MEMORY OF CAROL ANN JORDAN (1938 - 2020) WHO SO LOVED THIS PARISH

ANSWERS TO QUIZ AND CROSSWORD

Answers to quiz

1. Dame Mary Berry and Marcus Rashford MBE.
2. London. Ironically, the 1940 games were scheduled for Tokyo.
3. St George's Chapel, Windsor Castle
4. August
5. Royal St George's, Sandwich. The 2021 Championships will now be held there.
6. Diana Ross
7. St James's Park
8. Jacinda Ardern
9. The Netherlands, Rotterdam to be precise.
10. Tiger Roll

Answers to crossword

Across: 1. main; 3. abased; 8. across; 9. citron; 11. bankers; 12. Gemma; 14. ISA; 15. court; 16. awl; 17. gites; 19. elating; 21. stupid; 22. Easter; 23. resort; 24. leer.
 Down: 1. Miranda; 2. issue; 4. Bridget; 5. scram; 6. den; 7. gambling; 10. astute; 13. allegory; 15. cashier; 16. aviator; 18. Tours; 20. awake; 21. SOR

Despite whatever hopes we might have had when the last issue of the newsletter was published Covid-19 is still with us. This time Bridget Austin's superb rainbow picture is on the cover, reminding us how much we still owe to the magnificent efforts of the staff of the NHS. The last issue was published in the middle of the first national lockdown, and this one is going to press in the middle of the second. By the time you read it the restrictions may have been relaxed a little, but even so Christmas is going to be a bit different this year. Different, but not necessarily any less enjoyable.

Most of the regular features in this issue include news of how the virus has affected village affairs, and we've also got some updates on how local businesses have been getting on. Alongside that there are plenty of other things to report on.

We've got the latest news on the housing developments at Earlsbrook and the magistrates' court, plus some reflections from one of our residents on housing supply over the years.

Building of the new visitor centre at Linmere is complete, and, barring Covid restrictions, the new café is up and running. It's well worth a visit if you haven't called in yet. The facilities are sparkingly

modern in comparison to the cosily age-worn old ones, but the friendly atmosphere is much the same. Raj Regmi, the Managing Director of the company that runs it, tells us more.

We've got news from two other local businesses, the revitalised Forest View pub in Gallowscough Lane, and a little firm that you may never have heard of, Jades Jars. Don Wilson gives us the latest episode in the archaeological excavations in his back garden, and we've got two other pieces on the history of the parish, one about our local branch of the nineteenth century Methodist Church, and the other about the secrets of Pale Heights

Finally, our two regular updates from David Wright and the Cheshire Wildlife Trust on wildlife in the parish are complemented by one about two new residents, not quite in the parish but on our doorstep, the Hatchmere beavers.

Once again our warmest thanks go to all our contributors, our advertisers who pay the printing costs, and the volunteers who tramp the length and breadth of the parish to deliver the result.

Merry Christmas to everyone, and, with luck, a happily vaccine-proofed New Year!

Clive George
Editor

Forthcoming events - suspended

THE WOMEN'S INSTITUTE

Meetings are normally held at 7.30pm, every second Tuesday in the month except for August, at Delamere Community Centre.

*delamereandoakmere.co.uk/delamere-womens-institute/,
twitter.com/delamerewi, www.facebook.com/DelamereWI*

DELAMERE AND DISTRICT GOLDEN CLUB

We have not been able to meet since the lockdown, so no Christmas meal and party in December. It is unlikely we shall be meeting in the early New Year, but here is our programme for your interest. Posters will go up if and when we meet again. Meetings are on Wednesday afternoons. Anybody at home, any age, is welcome to come along.

Jan 6th: Travel Talk

20th : Burns Night Celebrations

Feb 3rd: Hotpot Lunch and Beetle Drive

17th: Indoor Games and Hot Crumpets

Mar 3rd: Cookery Demonstration

17th: Delamere Derby

31st: Magician Pete Turner

Apr 21st: Chairbics

May 5th: Annual General Meeting and High Tea

19th: Speaker

June 2nd: Coach Outing to Port Sunlight

16th: Play Your Cards Right

30th: "Surprise! Surprise!"

July 14th: Speaker, followed by a summer tea.

We normally meet every fortnight on Wednesday afternoons, except August, at the Community Centre. No upper or lower age limit!

For further information, including a copy of the programme as originally planned, or just for a chat, please contact Gloria Ackerley: *tel: 01829 752723*

ABOUT THE NEWSLETTER

Delamere and Oakmere News is published three times a year with the support of the Parish Council. The next issue is due at the end of March.

ADVERTISE WITH D&O NEWS!

Articles, ideas for articles, news of recent events or forthcoming ones, advertisements, photographs and any other contributions relevant to Delamere and/or Oakmere are all very welcome (inclusion subject to editorial discretion).

The newsletter is available to view on the Delamere and Oakmere Community website and you can also get a PDF file by email (contact us if you would like a copy).

CONTACT

Editorial: do_newseditor@yahoo.co.uk

Advertising: do_newseditor@yahoo.co.uk

SUPPORT US

All proceeds from advertisements go into the printing of the newsletter, so we really couldn't do this without you. Thank you!

BASED ON AN ORIGINAL DESIGN BY

**NEAVE
CREATIVE**

Print & Digital Design



☎ 01606 566 202

✉ info@neavecreative.co.uk

🌐 www.neavecreative.co.uk

LETTER FROM THE RECTOR

Some years ago a friend of mine used to refer to a metaphorical light in the windows of the houses of the Christian friends who lived around her. She imagined candles flickering in their windows as she walked her dog during dark winter evenings. Light is a symbol of hope; during the run up to Christmas, particularly during Advent the church talks a lot about light. In John's gospel chapter 1 verse 5 we read of, 'The light that shines in the darkness, and that the darkness has not overcome'. Hope and light are essentials during lockdowns, they help motivate us and keep us positive.

The Christian church believes and celebrates Jesus as the true light that gives light to everyone. Although Church buildings are closed, services continue online during lockdown. Arch Bishops Justin and Stephen have asked us to make November a month of prayer. Within our community people will be recording the prayer for the day and we will post them on FB. St Peter's is also lighting a candle each Thursday evening as a sign of hope. Whatever our faith, hope in our community unites us and holds us together during difficult times.

Yesterday I received a donation of selection boxes for the Foodbank; I also received a picture from a local artist and my village calendar.

As Rector I am allowed to go into Delamere Academy to take services of collective worship with the children, which is a privilege and a joy. At the

beginning of November we explored saints past and present; people who have inspired and encouraged us on life's journey, in addition to remembering those who have served in the armed forces.

November is a month of remembrance in churches through the world. With the help of key people in the village I have been able to put together a virtual Remembrance Service, befitting the honour the occasion deserves. Last Sunday we remembered loved ones on All Saints and All Souls day with a service to give thanks for their lives.

The pictures in our village calendar reflects the beauty and character of our wonderful village. Delamere is full of saints, full of light, full of hope. Irrespective of our beliefs, let's light our candles together on Thursday evenings as a symbol of the light that makes up our community; illustrating the solidarity, faith and support we have for one another in these difficult times.

The church is at your disposal for private prayer, you can text or ring me on 07429075283 and I will open the church for you. We have a wonderful new candle stand for you to come and light a candle in church. Please contact me if you need any support, I will do my best to be there for you, as I know you are for me.

Blessings

Rev Angela Askwith

St. Peter's Notice Board



CHRISTMAS SERVICES

Sunday 13th December 2020 at 6.30pm - Carols by Candlelight in church and online. (Please reserve you place if you wish to attend the church service by contacting Rev Angela, as places are limited due to social distancing guidelines).

Tuesday 22nd December 2030 at 7.30pm - Carols by the fireside, or Carols and beer! A zoom service of Christmas readings and Songs from St Peter's via zoom and on FB live. See FB or via St Peter's Delamere, A Church near You, for links.

Thursday 24th December 2020, all day, 'Muddy Church Christingle', a QR walk around the village, with crafts and Christingle activities, in aid of the Children's Society. Details will be available via St Peter's Facebook page or on A Church Near You. There will be a Christingle Service at 4pm available on YouTube.

Thursday 24th December 2020, 11.30pm A Midnight Communion Service in church, (please contact Rev Angela if you wish to attend, as places are limited).

Friday 25th December, 10.30 am. Family Service in church, (please contact Rev Angela if you wish to attend, as places are limited).

WEEKLY SERVICES

Weekly Services are uploaded to St Peter's, Delamere YouTube channel and links can be found on FB and on A Church Near You.

WE REMEMBER THOSE WHO HAVE DIED...

Phyllis Roberts
Mrs Geraldine "Elsye" Nicholas
Mrs Joan Ellen Stretch
Mrs June Penney
Mr Neville Barker
Mrs Carol Ann Jordan
Mrs Valerie Spurry Chisholm
Miss Brenda Astbury

ST. PETER'S 100 CLUB LOTTERY FUND - JOIN THE WINNERS!

Ian Howarth

Following the launch of the 100-Club Lottery scheme we have had eleven lucky winners - one of them twice! In 1st/2nd/3rd order the winners have been:

June - Katherine MacVicker / Gloria Ackerley / Rev Angela

July - Pat Tyson-Jones / Gloria Ackerley / Val Barker

August - Tony Overland / Martin Cook / David MacVicker

September - Steve Fisher / Gill Lunt / Rev. Angela

October - David MacVicker / Johnny Cason / David Bennett

For a monthly investment of £5, prizes are £100, £50 and £25 each month (*pro-rata as membership builds up*), with additional draws around Christmas.

If you would like to take part and support the maintenance and general running of St Peter's, please contact Ian Howarth at (ianh33@btinternet.com or 01606 883451) or any member of the PCC for further details, a set of rules and an application form.

D&O CALENDAR 2021

The 5th 'Walking out in Delamere and a Oakmere Calendar' is now available for 2021. It costs £7:50 this year to include a card backed envelope. It is available from Delamere Stores or myself via messenger or email at bridget.austin@icloud.com.

I can post to you for an additional £1.40.

After production costs have been met all of the profits this year will be split between two national charities who do great work; 'The Firefighters Charity' and 'Young Minds'. Copies are selling fast, please support if you can.

Thank you. Bridget Austin



WALKING OUT IN
DELAMERE AND OAKMERE

Photos by Bridget Austin

CALENDAR 2021

Autumn leaves - Bridget Austin



One evening at the end of August, the committee met in a member's garden, 2m apart, of course, to see if our WI could possibly meet up again as soon as the Community Centre was re-opened.

The first job was to find out if members were ready to re-start and if so, would there be enough to make it worthwhile. The answer was a resounding 'yes', although we do have some members who are still shielding.

As we are unable to use the kitchen in the community centre at present, we agreed to have an 'indoor picnic', with members bringing their own food. The December meeting would be similar - 'bring your own Christmas party food'. We decided that the hall is plenty big enough for us all to sit well apart, eat our picnic and generally have a good catch-up. You will probably notice yet again that food is an important part of our WI year! However, our plans were thwarted by the new regulations and we are unsure when we will re-start.

One of our members had planned an expedition to ski across Svalbard in April, having done lots of training over several years, but of course this had to be cancelled. Very disappointed but

not one to sit at home moping, Ellen looked around for something else to do which would also keep her fitness levels up. With Wales locked down to visitors, she decided that walking all 25 named long distance paths that start or finish in Cheshire was a good local challenge: 1500km (932 miles) in total! The planned short talk on her challenge for our October 'picnic' meeting is also now on hold, but we look forward to hearing it in the not too distant future. The link to Ellen's website is www.randogirls.com, if you'd like to follow her progress from the comfort of your armchair.

I mentioned in my previous report that 2020 sees the centenary of Cheshire Federation, and our Chairman, Jean Harding, challenged every WI in Cheshire to plant a tree to celebrate. If all goes to plan, we will be planting an oak tree near the new Delamere Forest visitors' centre on 17th November and it is hoped that as many members as possible will attend, subject to regulations. We hope to have a small plaque to commemorate the planting. Unfortunately, we cannot guarantee the weather for this auspicious event in the history of Delamere WI.

THE VILLAGE CAROLLERS

Unfortunately, because of Covid, we shall not be able to gather outside Delamere Stores this Christmas Eve. We usually gather in the morning for a couple of hours and sing carols and traditional Christmas songs and enjoy Lee's hospitality (very welcome

especially in cold weather.) Anybody can join in for any length of time. Donations are shared between St.Peter's Church, the Methodist Church and Delamere Community Centre. We hope to see you next year!

Gloria Ackerley

As with everyone in the country, these are challenging times for the Community Centre. The Management Committee are committed to keeping the Centre open for as long as it can and for as many groups and clubs as possible, within the prevailing Government guidelines. Although the Management Committee have received a grant from Cheshire West and Chester Council to help defray costs, we are running a monthly deficit that is eating into this grant.

It is hard to say what that means at present, but when this article was written we were at Tier 2 – High. As such the Centre remains open for groups of 6 or fewer, unless any are part of the same household, as long as the participants remain 2 metres or more apart. This means, for example, that yoga and pilates can take place but badminton and indoor bowls can't. We can also host educational and business groups, with the proviso that they maintain social distancing. If the area

is moved into a different tier then we will publish any changes on the Parish Council website and Facebook. Please check with your club official to see if you are meeting!

The only constants will be that the Post Office will remain open on Wednesday and Friday mornings and that the Salvation Army clothing bank will accept donations at any time; the Centre receives a proportion of those donations and, at times like these, every little helps!

The Centre has a QR code displayed in the foyer for those with the NHS Test and Trace app on their mobile phones so please use this if you are attending the Community Centre.

Finally, all of the Management Committee would like to wish all of our clients, present and future, a happy, healthy and peaceful 2021 and as merry a Christmas as we can all manage!!

Paul Dean, Chairman and Trustee
Steve Lacey, Treasurer
Pat Wheeler, Trustee

DEVELOPMENT ACTIVITY NEWS

Earlsbrook

At last! After all the Covid delays construction has resumed, the roundabout is finished, the one-way system has gone, and the traffic is flowing again.

When we last enquired, 17 of the houses had been sold and the first residents were expected to move in during January or February.

Old Court Gardens

Building work at the Oakmere police station and magistrates' court is now nearing completion, with most of the new build houses already occupied.

The courthouse itself has taken a little longer. With the chimneys gone it has lost some of its character, but at least it's still there!

Dear Residents and Friends of
Delamere and Oakmere

We are now entering Autumn and as usual the darker nights arrive earlier, and we must also contend with the colder weather. The COVID pandemic is unfortunately still with us, but the community spirit and resilience remains strong.

The Parish Council are still meeting virtually to discuss issues and local matters. The interactive speed sign on Station Road has now been installed, and we are also planning to progress with the installation of several grit bins around the area once Cheshire West have confirmed installation dates.

Work has finished on the new Visitors Centre and the Bike Shop and Café are now fully open together with a brand-new spacious car park, with the new visitor hub due to be open soon for information and advice for visitors. Forest Explorers' education services are also up and running and they are also holding regular education sessions and special events throughout the season.

The new roundabout at the Earlsbrook Estate has now finally been completed, and work is shortly due to commence on the pavement on the railway bridge, which I'm sure will be very much welcomed by those who use the station on a regular basis. We are still awaiting confirmation from Lane End

as to when the project will be completed and when the new occupants will be arriving.

Once again, I would like to thank all those businesses who continue to help support the community and the residents who need help the most at this time, especially Lee and the team at Delamere Stores, The Buckley's at Delamere Farm Shop and Claire Darlington at Delamere Station House. Please continue to keep supporting our local businesses during these challenging times, even more so during the weeks leading up to the festive period.

Also a huge thanks to Reverend Angela and the team at St Peters Church for their amazing work in providing virtual services online, which I know has benefited so many in the community.

2020 will be a year that many of us will be unlikely to forget, but I hope that 2021 will bring you all plenty of opportunities to do the things we enjoy and to spend more quality time with family and friends.

With best wishes to you all for the festive season,

Andrew Bell
Chair, Delamere and Oakmere Parish
Council

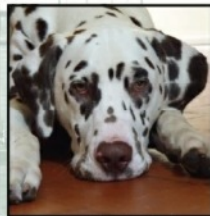


Hollybank

VETERINARY CENTRE



- ◆ *Independent small animal veterinary hospital*
- ◆ *Caring for pets and their owners*
- ◆ *24hr emergency service on site*
- ◆ *Exceptionally high standards of care, hygiene, facilities and equipment*
- ◆ *Professional, friendly, welcoming & kind*
- ◆ *Part of the local community*



584 Chester Road | Sandiway | Cheshire | CW8 2DX

Tel: 01606 880890 | www.hollybankvets.co.uk

COVID UPDATE - DELAMERE FARM SHOP

Dorothy Buckley

At the beginning of lockdown we were planting pumpkins not knowing what would happen in the months ahead, or whether we would be able to open up the field for 'Pick your own Pumpkins',



Thankfully we opened and it proved to be a great success. It's an activity for the whole family during these difficult times, the weather was dry which made our first weekend very busy. It's fantastic to see how creative folk are, carving and painting their pumpkins and we really appreciate the lovely messages and comments we have received. It makes it all worthwhile. We also provided several photo opportunities including a giant spider and a black cat made from silage bales.

We are now cutting and selling our home-grown vegetables and potatoes



in our farm shop along with lots of other local produce. Almost everything we stock is from a small local business with very few exceptions.

Christmas is approaching and we will also sell Christmas trees as well as vegetables and potatoes for your Christmas dinner. For all of you who love sprouts, we have them for sale now!

We continue to allow only one person/household in the farm shop and require wearing of face masks. Contactless card payments are preferred; however, we do accept cash.

A massive Thank you to everyone for continuing to support our farm shop. We love meeting you all. Stay Safe everyone. Wishing you all a Happy Christmas and a healthy New Year, from us all at Delamere Farm Shop.

COVID UPDATE - NO TRAFFIC! - BUT NOT FOR LONG

Station Road in and out of lockdown...



April 2020



October 2020

I would like to thank those people who have donated so far but also ask for continued donations whether as physical items or money. Covid is still affecting many families due to loss of income so the food bank is crucial for many families.

If you would like to go onto the Runcorn and District Food bank page

you are able to subscribe to emails which let people know how much in donations we have received and given out, but more importantly, it lists items we are short of, and has the link to donate money to.

<https://runcorndistrict.foodbank.org.uk/>

RUNCORN AND DISTRICT FOOD BANK

Please note that we are unable to take baby milk formula, but we can take baby food in tins or jars. We would prefer our regular donors to avoid giving beans, if possible, as we always receive plenty of these from supermarket donations. Thank you.

Please consider supporting us financially, as an alternative to giving food, as it costs over £15,000 per year to run the foodbank – food and people insurance, warehouse and office rates, staff and administration, expenses, internet access for warehouse and 7 distribution centres. Please either email us, go to our new [Online Donation page: cafdonate.cafonline.org/13509#!/DonationDetails](https://cafdonate.cafonline.org/13509#!/DonationDetails) or go to our website for further details runcorndistrict.foodbank.org.uk/give-help/donate-money/

Covid continues to be an issue doesn't it? We're still opening and closing the gate for customers, providing sanitiser, ensuring spatial separation and restricting numbers in the warm ups so that we can space competitors out.

It's had a huge impact on our BE event as we had no spectators and therefore no sponsors and reduced trade stands which hits the events' profitability hard. Now local lockdowns have started we

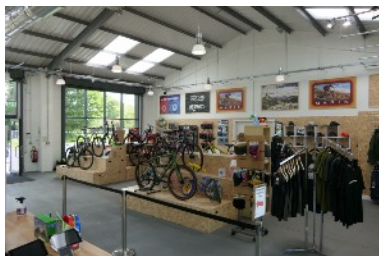
have lost a considerable number of customers who are not allowed to visit.

Our building development was hampered but we're getting there, though corona has affected the delivery times for some goods as production of goods is restricted in factories due to the social distancing of staff.

Still we're open all the same which is great, and healthy too which is what's important. Here's to a vaccine!!

THE LINMERE VISITOR CENTRE

Redevelopment of the Linmere visitor centre is now close to completion. At a cost of £9 million it is the largest such project ever commissioned by Forestry England. Subject to Covid restrictions, the café and the TRACS bike hire shop are up and running



The timber-framed buildings are clad in UK grown larch, with roof top solar panels, a ground-source heat pump, a sustainable drainage system and infrastructure for rainwater harvesting.

The centre has parking for up to 500 cars using Automatic Number Plate Recognition, which records how long you have stayed when you pay at the machine before you leave. You can park for free for up to 20 minutes, after which the charges are £2 for 1 hour, £4 for 3 hours and £6 for all day. Annual membership costs £40.

THE CAFÉ AT THE VISITOR CENTRE

By Raj Regmi, Managing Director, Meadow Brown Restaurants Ltd

We have been working on the café at the Linmere visitor centre for over a year now. We were initially meant to open on the 29th June but due to the COVID situation we finally managed to open it on the 12th September. It's been a very difficult time for a business to open in this climate but we are seeing it through nicely. We have done the full fit out of the café and the kitchen, and it has been a expensive process but very worth it.



Once the lockdown restrictions have eased we will be open from 9 till 4 for the rest of the winter. We will definitely

be opening longer hours in spring and summer.

We are really trying hard to work with local suppliers around the area. We will really appreciate if local suppliers contacted us and we will be very keen to use their produce in our menu. We take pride in good food and we buy as much local as we can for our meat, bread, vegetables and even eggs and coffee.

We have a music licence till midnight, purely so we can facilitate private events, wedding parties and corporate events at the café in future when the restrictions are all over. We were selling some alcohol when we opened, but we are not doing it anymore as we have decided to put that on hold till the situation gets under control.

Our website has lots more information - go to:

<https://www.delamereforestcafe.com/>

Delamere Forest Café

Our brand new café is now open! Situated in beautiful location of Delamere Forest, with its wide-open spaces and natural beauty it is the perfect spot to stop for a bite to eat.

Our opening hours are:

09:00-16:00 Between the 1st of November to the 31st of March

And 09:00-17:00 Between the 1st of April to the 31st of October

Any changes can be found on our Facebook page – Delamere Forest Café.

When the government guidelines will allow, we are proud to say we hold music and alcohol licenses ready for all your function needs!

Visit our website at: <https://www.delamereforestcafe.com/>

Delamere
Forest
Cafe

Food Menu

Breakfast

SERVED UNTIL 11:00 AM

DELAMERE FULL ENGLISH BREAKFAST TOAST, TWO POACHED EGGS, BAKED BEAN, MUSHROOM, SAUSAGE, HERRING, TOMATO, POTATO, PEAS, BUTTER, TARTAR SAUCE, AND MUSHROOM	£9.95
DELAMERE VEGAN BREAKFAST TOAST, TWO POACHED EGGS, BAKED BEAN, MUSHROOM, SAUSAGE, HERRING, TOMATO, POTATO, PEAS, BUTTER, TARTAR SAUCE, AND MUSHROOM	£9.95
SANDWICH TOAST, TWO POACHED EGGS, BAKED BEAN, MUSHROOM, SAUSAGE, HERRING, TOMATO, POTATO, PEAS, BUTTER, TARTAR SAUCE, AND MUSHROOM	£5.95
BAKED SANDWICH TOAST, TWO POACHED EGGS, BAKED BEAN, MUSHROOM, SAUSAGE, HERRING, TOMATO, POTATO, PEAS, BUTTER, TARTAR SAUCE, AND MUSHROOM	£5.95

AND AN EXTRA DELAMERE TOAST TO YOUR MEAL FOR £1.00 (LIMITED PER MEAL) FOR £1.25

CATCH OF THE DAY TOAST, TWO POACHED EGGS, BAKED BEAN, MUSHROOM, SAUSAGE, HERRING, TOMATO, POTATO, PEAS, BUTTER, TARTAR SAUCE, AND MUSHROOM	£11.95
LOCAL BAY GAMMON AND EGG TOAST, TWO POACHED EGGS, BAKED BEAN, MUSHROOM, SAUSAGE, HERRING, TOMATO, POTATO, PEAS, BUTTER, TARTAR SAUCE, AND MUSHROOM	£10.95
DELAMERE EGG SANDWICH TOAST, TWO POACHED EGGS, BAKED BEAN, MUSHROOM, SAUSAGE, HERRING, TOMATO, POTATO, PEAS, BUTTER, TARTAR SAUCE, AND MUSHROOM	£8.95
DELAMERE EGG SANDWICH TOAST, TWO POACHED EGGS, BAKED BEAN, MUSHROOM, SAUSAGE, HERRING, TOMATO, POTATO, PEAS, BUTTER, TARTAR SAUCE, AND MUSHROOM	£8.95
DELAMERE EGG SANDWICH TOAST, TWO POACHED EGGS, BAKED BEAN, MUSHROOM, SAUSAGE, HERRING, TOMATO, POTATO, PEAS, BUTTER, TARTAR SAUCE, AND MUSHROOM	£8.95

BURGERS

SERVED WITH A CHIPS AND SAUCE OR CHIPS AND SAUCE IN A LOCAL BAKED BUN

DELAMERE HANDED PRESSED BEEF BURGER TOAST, TWO POACHED EGGS, BAKED BEAN, MUSHROOM, SAUSAGE, HERRING, TOMATO, POTATO, PEAS, BUTTER, TARTAR SAUCE, AND MUSHROOM	£10.95
DELAMERE CHICKEN BURGER TOAST, TWO POACHED EGGS, BAKED BEAN, MUSHROOM, SAUSAGE, HERRING, TOMATO, POTATO, PEAS, BUTTER, TARTAR SAUCE, AND MUSHROOM	£10.95

DELAMERE VEGAN BURGER TOAST, TWO POACHED EGGS, BAKED BEAN, MUSHROOM, SAUSAGE, HERRING, TOMATO, POTATO, PEAS, BUTTER, TARTAR SAUCE, AND MUSHROOM	£10.95
---	---------------

AND CHIPS AND SAUCE OR CHIPS AND SAUCE IN A LOCAL BAKED BUN

TOASTIES TOAST, TWO POACHED EGGS, BAKED BEAN, MUSHROOM, SAUSAGE, HERRING, TOMATO, POTATO, PEAS, BUTTER, TARTAR SAUCE, AND MUSHROOM	£5.95
SANDWICHES TOAST, TWO POACHED EGGS, BAKED BEAN, MUSHROOM, SAUSAGE, HERRING, TOMATO, POTATO, PEAS, BUTTER, TARTAR SAUCE, AND MUSHROOM	£5.95

CHILDREN'S MEALS TOAST, TWO POACHED EGGS, BAKED BEAN, MUSHROOM, SAUSAGE, HERRING, TOMATO, POTATO, PEAS, BUTTER, TARTAR SAUCE, AND MUSHROOM	£5.95
SAUSAGE AND CHIPS TOAST, TWO POACHED EGGS, BAKED BEAN, MUSHROOM, SAUSAGE, HERRING, TOMATO, POTATO, PEAS, BUTTER, TARTAR SAUCE, AND MUSHROOM	£5.95
CHICKEN AND CHIPS TOAST, TWO POACHED EGGS, BAKED BEAN, MUSHROOM, SAUSAGE, HERRING, TOMATO, POTATO, PEAS, BUTTER, TARTAR SAUCE, AND MUSHROOM	£5.95

SIDE ORDERS TOAST, TWO POACHED EGGS, BAKED BEAN, MUSHROOM, SAUSAGE, HERRING, TOMATO, POTATO, PEAS, BUTTER, TARTAR SAUCE, AND MUSHROOM	£5.95
CHIPS TOAST, TWO POACHED EGGS, BAKED BEAN, MUSHROOM, SAUSAGE, HERRING, TOMATO, POTATO, PEAS, BUTTER, TARTAR SAUCE, AND MUSHROOM	£5.95
SAVORY POTATO FRILLS TOAST, TWO POACHED EGGS, BAKED BEAN, MUSHROOM, SAUSAGE, HERRING, TOMATO, POTATO, PEAS, BUTTER, TARTAR SAUCE, AND MUSHROOM	£5.95

Drink Menu

HOT DRINKS

AVAILABLE WITH SUGAR, ESSENCE, OR FLAVOUR

LATTE	2.95
CAPPUCCINO	2.95
FLAT WHITE	3.00
MOCHA	3.25
SINGLE ESPRESSO	1.95
DOUBLE ESPRESSO	2.45
FILTER COFFEE	2.40
HOT CHOCOLATE	3.00
DELUXE HOT CHOCOLATE	3.85
TEA	1.95
EXTRA SHOT OF SYRUP	75p

COLD DRINKS

AVAILABLE WITH SUGAR, ESSENCE, OR FLAVOUR

SMART WATER STILL	1.95
SMART WATER SPARKLING	1.95
FENTIMANS ELDERFLOWER	2.75
FENTIMANS LEMONADE	2.75
DRINKS CANS	1.75
FRUIT SHOOT	1.35
FRUIT JUICE CARTON	1.30
INNOCENT SMOOTHIE	1.75

Dessert Menu

AVAILABLE WITH SUGAR, ESSENCE, OR FLAVOUR

BANANA LOAF	2.90
LEMON DRIZZLE LOAF	2.90
CHOCOLATE BUNNAGE	2.90
CHOCOLATE CAKE COOKIES	2.90
MUFFIN	2.90
ESPRESSO GELATO	1.95
CHOCOLATE CAKE	2.90
SICILIAN WITH JAM AND BUTTER	3.10
SICILIAN WITH JAM AND CLOTTED CREAM	3.10
CAVENDISH CAKE	2.90
COFFEE AND WALNUT CAKE	2.90
DELAMERE PIES	1.95

ONLY DELAMERE PIES AVAILABLE WITH SUGAR, ESSENCE, OR FLAVOUR

DELAMERE FOREST
CAFE

DELAMERE FOREST
CAFE



Delamere CofE Academy fortified their commitment to getting children into the great outdoors with a visit to an iron age monument, amongst other adventurous activities.

Staff at the school are determined to ensure children benefit from the full scope of education outside the classroom, while adhering to strict coronavirus safety precautions.

In recent weeks the intrepid youngsters from the Stoney Lane school have been on trips to learn about Eddisbury Hillfort, enjoyed the nature at Delamere Forest, and have even been canoeing.

learn their core subjects as well as learning new bushcraft skills”.



At the hillfort the children loved standing along the ancient rampart pretending to defend against an enemy attack, and they got lots of interesting information from teaching assistant Lorrae Campbell, who is an expert on hillforts and was involved with the original archaeological dig on the site about 10 years ago.



Head of School Julie Clayton says: “We are taking our learning outdoors as much as possible, which means our pupils are using natural resources to



Other outdoor activities have also included team building, knife wielding, marshmallow roasting, den building and cave-painting, and the children

have absolutely loved it despite some wet weather.



While the school continues to follow social distancing, sanitising and all other precautions very carefully, it attaches great importance to getting all pupils out and about. The success of recent activities has only reinforced that belief.

On top of the many plaudits reported in the last issue of D&O News (one of under 20 UK schools given a Wellbeing Award for Schools, one of Tatler magazine's top 10 non-fee paying primary schools, and Cheshire West's top performing school in the latest SATs results), the school has also won Platinum status for sporting provision.

The school shares expertise with fellow members of North West Academies Trust (NWAT), which include St Martin's at Chester, Oak View at Winsford, Weaverham Primary Academy and Rudheath Senior Academy.

Unfortunately due to lockdown the open day has had to be cancelled. Parents can contact the school to make a viewing in December via:

admin@delamere.cheshire.sch.uk

A HOME OF YOUR OWN

by a Delamere resident

Take a walk around the parish and you will soon find new houses being built, but many young people can't afford them. Cast your mind back 100 years when housing was very different. A lot of people lived in tied houses, which were rented out by employers in return for working for them. This was fine until the worker had to finish their job and the house was needed for a new worker. In some cases the family had to relocate to another area, not always so familiar to them.

Then in the 1920s councils started building council houses for couples and families, which were not tied.

Northwich Rural District Council covered a large area including Delamere and Oakmere. You put your name down on an application list and were given points for such things as overcrowding at your present home, family increases, and working in the area. Imagine the joy when you got a letter saying you had been allocated a house!

In later years the Council stopped building houses and many of them were sold off to tenants. There has since been talk of building again, so maybe our young people might have the chance of their own home one day.

I thought I would give you an update on our Lockdown dig continuing on from the last edition of the News.

A number of archaeologists have been to see it, and all agree it is a bit of a conundrum, a mix of medieval and Bronze/Iron Age.

This summer we have found a doorway, as in the photograph, and just by this I found a large iron door stud of the kind you see on old medieval doors.



Also found, have been a number of pieces of pottery which have been confirmed as monastic Cistercian ware, dating from Medieval times, and also some from the Civil War era.

The main discovery is the sandstone, found just under our lawn leading up to and under the floor, complete with grooves looking like wheel ruts.

I have been told this is ancient. Last week we investigated the side of the sandstone, and it has been neatly cut

out in a straight line. The other side has a possible post hole, and again has been neatly cut.



So what is it all about...is it a remnant of an ancient trackway leading up to the hillfort? Is it a track to the Chamber in the Forest? The current track was not in existence then and this is the closest point to the old Roman Road, or is it something else totally different...perhaps we will find out next year.

EXERCISE ONLINE

EMMA WILSON
●●●●● FITNESS

Purestretch | Kettlercise | HIIT | Full Body Blast | Tone & Target

30 MIN
SESSIONS

LIVE

or Recorded Link



Emma Wilson Fitness

PLUS free

bitesize workouts

LIVE everyday on Facebook

A perfect way to help

improve your metabolism

Look out for
our Boxing Day
Sale on the
26th Dec

START AS YOU
MEAN TO GO ON!

FEEL
LEAN
IN 14

14 day post
christmas fix

STARTS 4TH
JANUARY

healthy headstart
to 2021



BY EMMA WILSON
●●●●● FITNESS



KICKSTART 2021

14 day online food,
fitness, fat loss &
wellbeing plan

JUST
£28

Tel: 07971 596529

Web: www.emmawilsonfitness.co.uk

Email: getfit@emmawilsonfitness.co.uk



From Reginald Nettel, *Folk Elements in Nineteenth-Century Puritanism*, 1969, p. 283

Having spent over half my life in Delamere, and having been brought up as a Methodist, I was intrigued to come across a reference to the Forest Methodists, otherwise known as The Magic Methodists of Delamere Forest during my history studies with the WEA this term. Maybe some of you are aware of this group, but I had never heard of them. In my researches however I found two mentions of them in the Delamere book, published by the local history group under Frank Latham, in 1991.

By the early nineteenth century, the Wesleyan Methodist Church had become respectable, and many of its members were successful and prosperous. The French Revolution was still fresh in people's memories, and that and the pervading atmosphere of the Napoleonic Wars led the official Methodist Church leadership to fear repression.

However many of the church's members in areas like Staffordshire

and Cheshire were working people. They held cottage prayer meetings which were much more informal than the services in Methodist Chapels. Often, it seems, there was no itinerant preacher to lead them and the meeting would start with a hymn and opening prayer. There would follow a time when anyone could start praying. They sometimes did this out loud and simultaneously, the noise of which is reported to have carried a considerable distance. The Primitive Methodists came from this tradition with their reversion to outdoor meetings as with the so called camp meeting at Mow Cop in 1807 on the Staffordshire/Cheshire borders. This movement was led by Hugh Bourne, a carpenter, and William Clowes, a potter. That year the Wesleyan Conference forbade camp meetings and in 1808, Bourne was excluded from the church.

During this tumultuous time Bourne travelled the 30 miles on foot to visit the Magic Methodists in Delamere Forest and their leader, Thomas Crawfoot, about whom he had heard evil reports¹. Crawfoot had been leader of a class meeting of the Methodist Society at Duddon Heath, but moved to Delamere Forest 1800/1, where he was recognised as a local (lay) preacher and served the Forest Chapel and others in the area.

The group had become known as Forest or Magic Methodists by the time of Bourne's visit. He attended one of their meetings and after noting some

unimpressive preaching by Crawfoot, a hymn and a song, observed:

a woman struggling, as if in distress, and [!] wondered why they did not pray for her. But two women placed her in a chair, and she appeared to have fainted away. I then thought, this is their trance work. . . at length the woman clasped her hands, and praised the Lord, and went on speaking occasionally without opening her eyes. She spoke of a fine green meadow, and said, 'Let me lie down'. She then spoke of a fine river. . . she spoke of trumpets, and called out 'Blow! blow! blow!'. She after a time called on a young woman by name, and said, 'Leave it'. And shortly after that she awoke up and came out of her visionary state. I then went up to the woman to enquire, but all in vain; only one of the women said, 'These things strengthen our faith.'

In spite of Bourne's reportedly severe character, at this time he took what he had seen as the work of God and a sign of his grace, and is said to have made numerous trips to Delamere Forest, Crawfoot becoming a sort of mentor to him.

They later fell out. Crawfoot, a widower, remarried. Bourne was a believer in celibacy. Crawfoot also refused to denounce strong drink. Bourne's disillusionment with the man, seemed to lead him to reject all that he stood for. Perhaps because of this, Magic Methodism continued in the area as a group distinct from Primitive Methodism until 1831. Crawfoot died

suddenly in 1839 and was buried in Tarvin. The so called 'forest chapel' seems to have been his own house in the forest where he held his prayer meetings and where Bourne and others visited him. Where in the forest that house was, is not stated.

Crawfoot is believed to have had a considerable influence on the Primitive Methodist leaders and was involved in the movement, though this was later downplayed. He was certainly the first known to use the term 'primitive' in that context. Unlike the modern use of the word, he was referring back to John Wesley and the early Methodist followers – the first ones. They too, had held outdoor meetings, and considered the laity to be as important as the ministers. Crawfoot, defending himself at a Northwich Methodist Circuit meeting in 1807, against accusations of unauthorised (outdoor) preaching, said:

'Mr Chairman, if you have deviated from the old usages, I have not; I still remain A Primitive Methodist.'

In 1932 the Primitive Methodists reunited with both the Wesleyans and the United Methodists, to form the Methodist Church of Great Britain.

SOURCES:

1. John Brittain, (April 2008) Hugh Bourne and the Magic Methodists, *Methodist History*, 46:3, The United Methodist Church.
2. Frank Latham (ed) (1991) *Delamere*, pp.48&52, Local History Group

THE SECRET HISTORIES OF PALE HEIGHTS

There are two features of great historical significance on the top of Pale Heights. One is hidden in plain sight, while the other is just hidden. You cannot help but see the first, the giant communications mast that towers over its two smaller siblings, but do you know its secret? And what about the other? Do you even know it's there? Walk south from the circle of County Stones, past the rectangular grass-covered reservoir and into the grassy area beside it, and you'll see the disused water tower that preceded the current reservoir.



Behind the water tower, hidden in long grass and brambles, is a triangular pillar, known as a triangulation point or trig point, on which surveyors mounted their theodolites when making maps. The photo of it comes from an article by Barry Jones in issue 17 of the newsletter, published 13 years ago. Now the vegetation is so overgrown that you need a ladder to even see the top of it.



More than 6,500 similar trig pillars were built on other hilltops, but this one is special. It marks the Delamere Meridian, which was the centre point for mapping the whole country until the current grid system was introduced in the 1940s.

Production of the Old Series Ordnance Survey maps began in 1805, starting with the south of England and based on the Greenwich Meridian. This was too far south for accurate representation of the north of the country, so as the work progressed Delamere's position near the centre of the United Kingdom led to it being adopted for the whole country. The remainder of England and Wales were mapped in the 1830s, based on Delamere, and when the original Old Series maps of southern England were updated in the 1870s they too were based on Delamere. Scotland followed in the 1920s. The Delamere-based OS maps remained the standard until the new national grid system was introduced.

When these early maps were produced the surveyors didn't have the benefit of

the present pillar. Instead they mounted their theodolites on a portable tripod.



*OS Surveyors in the mid 19th century
Sandstone Ridge Trust*

For higher accuracy a more stable base was needed, so when the Ordnance Survey began the re-triangulation of the country in 1936 they started building trig pillars. The Delamere pillar was one of the first, completed on 1st April 1936 at a total cost of £3.3s.3d.

Several of us in the parish would like to make the pillar visible again, or better still, make a feature of it. It is likely to be of great interest to many of the multitude of visitors who come to enjoy the spectacular views from Pale Heights, so an information board could be put up near the County Stones telling them it's there. Another next to the pillar would explain its significance. Even better than that, the old water tower could be knocked down to restore the view to what it was when the maps were made.

We've been in touch with United Utilities, who own the land, and have made a little progress. They have made what seems at first sight to be a highly public-spirited suggestion, that they sell us the land for the princely sum of £1 so that we can do whatever we like with it. Unfortunately there's a catch. Our £1 wouldn't just buy the land around the pillar. It would buy the land around the water tower as well.

The ageing tower is a far bigger liability than it is an asset, so that would seem to be a pretty good deal for them and a pretty poor one for us. Discussions continue.

The other secret

Meanwhile, what is the other historical secret, the one that's hidden in plain sight? Before long-distance telephone calls went via satellite they were sent through microwave beams transmitted from tower to tower. The tower on Pale Heights entered service in the late 1970s, as part of a route from Dublin to Manchester via Holyhead, and on to the BT tower in London.



The "troubles" of the IRA campaigns in Northern Ireland were raging at the time, and the electronic intelligence agency GCHQ was keen to tap into telephone calls between the UK and the Republic of Ireland. If they could put up their own tower, with its own dishes, right on the line of one of BT's microwave beams they would be able to intercept every call. They needed a location where not too many questions would be asked, and they found one, at the nuclear fuel processing facility at Capenhurst. This was exactly on the line between the BT tower at Holyhead and the one on Pale Heights.

The tower they built in 1989 didn't look remotely like any of BT's communications towers. Its microwave dishes were concealed behind two of

the upper windows, which were made of a special radio-transparent fibreglass dielectric material.



It was no secret that a 158 ft tower was being built, so some sort of reason was needed for why it was there. The Ministry of Defence issued a press release saying it was a test facility for electronic equipment that had to work reliably near concentrations of overhead electrical cables, such as those at Capenhurst. The tests had to be done in a tower, they said, because they needed to be repeated at a number of different heights. Not everyone was convinced by this, and rumours abounded about the real reason. This didn't become apparent until 1998, when the Good Friday Agreement had made the tower redundant and the MoD tried to sell it.

It seems not to have occurred to the MoD that potential buyers might look at the architect's design drawings a little more closely than the planning authority had when it approved the tower's construction. These stated that the relevant microwave-transparent


windows had to be aligned, to a tiny fraction of a degree, on a particular compass bearing. If you follow that bearing looking for something to do with microwaves, you soon come to the Holyhead tower in one direction, and in the other, the one on Pale Heights.

The MoD failed to find a buyer for the Capenhurst tower, which was demolished in 2004. The one on Pale Heights is still there, a monument to a troubled history.


Sources: The Independent (www.independent.co.uk/news/how-britain-eavesdropped-on-dublin-1106606.html); *Richard Lamont* (www.lamont.me.uk/capenhurst/)

nicola gibson
ARCHITECTURAL
DESIGN





ONE OFF HOUSES | EXTENSIONS & REMODELLING
RESIDENTIAL DEVELOPMENTS | GARDEN ROOMS



All drawings prepared for and submitted to the Planning and Building Control departments on your behalf, including Listed Building and Conservation Area consent where necessary.



Merry Christmas and best wishes for 2021!

 Tel: 01606 536101  Mobile: 07813 034552
 Email: nicola@njgdesign.co.uk  www.njgdesign.co.uk



The County Stones, Pale Heights - Bridget Austin



The BT mast, Pale Heights - Bridget Austin

A CHILDHOOD DREAM BECOMES A REALITY

by Carol Gerrard-Hughes

When I bought the Forest View pub and campsite in Gallowsclough Lane it was the realisation of a childhood dream. I fell in love with the site at the age of six when my parents bought a caravan and the family spent weekends and school holidays there. When I was 13 I started washing up in the pub, then worked behind the bar and, ultimately, finished up running it. Having bought the pub tenancy I went on to purchase the whole site, with its 45 static caravans and 26 touring pitches. Knowing how much potential it had, with its fabulous views across Delamere Forest, I was keen to make a significant investment to bring it back to its former glory. My plans were to extend and refurbish the pub, build a new toilet block, create 20 more touring pitches, provide additional

electrical points for the caravans, carry out some landscaping, and tidy up the site to further enhance its appeal.

My parents and my two siblings and I spent some wonderful holidays and getaways here, and now, from having been my second home, it has turned into my real home and I am so excited about the future.

With the works now complete, I and my family are very proud to be able to invite locals as well as visitors to the area into the pub. We offer a fine selection of draft beers as well as wine and spirits (including an excellent range of gins!).

We have had to close for the new lockdown but hope to be open again in December. We look forward to seeing you!

ForestNet IT Service

Station Rd, Delamere

*Your Local Computer Support Service for
the Home/HomeOffice/Small Business*

PCs Laptops Tablets

Printers Routers Servers

Troubleshooting/Problem Solving/Upgrades

Software Installs/Upgrades

Anti-virus/Malware issues

Home/Office Networking

Router/WiFi issues

Broadband Security Controls

30 Years ICT experience

Courteous Professional Service

Competitive Rates Fixed Price No Fix No Fee

Email: enquiries@forestnet.co.uk

Tel: 07856 222415

Web: www.forestnet.co.uk



01606 882 219

SpannsGarage

*Motorcycles, Scooters, Trykes, Quads
Cars, Vans and Three Wheel Cars*

*MOTs, Tyres, Servicing, Repairs, Air
Conditioning, Diagnostics*

Collection from local area

Opening Hours:

8.30 am – 5.30 pm Monday to Friday

8.00 am – 1.00 pm Saturday (MOTs only)

Tel: 01606 882219

Fax: 01606 881700

Email: spanns.garage@zen.co.uk

www.spannsgarage.co.uk

Dalefords Lane

Whitegate

CW8 2BW

The Forest View Inn,
Gallowsclough Lane, Oakmere,
Northwich, Cheshire, CW8 2TG

Call us:
01606 889500

THE FOREST VIEW



WELCOME TO THE FOREST VIEW



The Forest View is a charming country Inn near to Delamere Forest in Cheshire with a Caravan and Camping Park. We offer a friendly service, great atmosphere and walkers, cyclists, horse riders, children plus all types of animals are very welcome.

The Forest View location is near to Delamere Forest with fabulous views over the valley, so you can admire lots of birds and wildlife, as well as enjoying a wide range of activities in the forest and surrounding area.

OPENING HOURS

Monday: 4pm - 11pm

**Tuesday to Sunday:
12 noon - 11pm**

We have seating areas to both the front and the rear of the pub with a covered area for days when the weather is not too kind! Inside you will find well spaced seating as well as a fantastic selection of beers, wines, spirits and soft drinks.

Why not pay us a visit and discover why the Forest View Inn is popular with both locals and visitors.



Like us on Facebook



Follow us on Instagram

www.forestviewpub.co.uk

Jades Jars evolved in early 2015 after the birth of our son's second daughter and with it the realisation that both girls had one thing in common, the same middle name of Jade.



We started our little 'hobby' (ha ha) following Dave's retirement and Alison's subsequent retirement on medical grounds, and were looking for a catchy name. Family is important to us, and what better way to acknowledge that.

Before the Covid situation you would find us at Craft Fairs, usually supporting local charities, school fairs and Christmas fairs. Sadly this is now difficult for many reasons, but particularly as Alison has to shield as much as possible. This has led us down the route of the online virtual markets which has proved to be technically challenging. However, we both believe it is important to support local independent businesses as much as possible - especially as during this difficult time it has been the local independents who have helped us.

We are registered with CWAC and have a 5 star rating. We also hold the appropriate food and hygiene certificate and have public liability insurance. This has ensured we are compliant in preparing all these goodies from our modest kitchen at home. The time we spend in the kitchen is very dependent on Alison's health.

We pride ourselves on using either homegrown or locally sourced produce, and are mindful of what are considered to be allergens. Dave loves to forage, particularly berries, but we are always mindful of leaving some for the wildlife to benefit from. We have a 'secret' parking layby where we are usually able to pick several kilos of damsons. Unfortunately, due to Alison being in hospital we missed the window of opportunity this year.



We are also very lucky to have good friends and neighbours who donate kilos of plums, apples and pears in return for a jar or two. We use Seville Oranges in our marmalades imported

directly from Spain every January. Using these oranges we make a wide selection of marmalades including Chilli, Whisky and Ginger, Dark marmalade with Rum and many more. Obviously our very popular Gin and Lemon marmalade does not include these oranges.

Not only do we use tried and tested flavours but we also 'concoct' our own recipes, a recent one being 'gooseberry, chilli and ginger chutney'.

We also produce a large range of jams as well as chutneys. A full list can be found on our Facebook page www.facebook.com/jadesjars22.

You can also message us through this page to place an order. Or please have a look at our recently set up Etsy shop at www.jadesjars22.etsy.com where you can also make purchases.

Keeping within Covid19 Guidelines and following strict social distancing and hygiene rules we are happy to deliver within Delamere and Oakmere at no extra cost.

Technology and Social Media have been a huge learning curve this year with our move to online selling. We've even been so bold as to set up an Instagram account at www.instagram.com/alison.wilkinson1 which has helped us to promote our gift hampers, gift boxes and gift bags.



As well as being very popular at Christmas, they can be created for any occasion. So thinking ahead, that might include Mothers' Day or even Fathers' Day.



Wild boar seat on the Sandstone Trail - Ray Downham

My first thoughts of Autumn are when I hear the first calls of the flocks of wild geese, passing overhead or landing in the harvested corn and maize field.



Pink Footed Geese © David Tipling

A large flock of Pink Footed geese passed over Delamere on 17th October. These geese are from Iceland and winter locally on the Mersey and Dee estuaries, foraging inland in very large numbers these days.



Pink Footed Geese © Nick-Appleton

Another delight of Autumn is to hear the winter song of the Robin. This is when the pair that has bred together during the summer split up and find their own winter territories. The song of the male is different during the winter season than summer.

Tawny owls also split up as pairs and establish winter territories. There is a lot of hooting and screeching as battles commence with other birds, including this years' young Tawny owls who are also looking for a place to live. Great squabbles have been taking place in Primrose Hill wood, also around Organsdale and in woodland by the school. Sadly, this reminds me that a young Barn owl was a road casualty by the school on 12th October. The bird was unusually thin which may have contributed to its demise.

Willow tits are birds which have become very scarce in recent years. A glimpse of one on the feeders at Organsdale feeding station indicates that they are still in the area or just passing through.



Willow Tit Francis © C Franklin Wikimedia

Easily confused with the Marsh tit, I have no easy method of identification to offer – possibly a glossy cap and a pale spot on the base of the upper mandible near to the nasal opening on the March tit are two good identification features.

OUR NEW CHRISTMAS SHOP
— NOW OPEN —

Christmas

AT THE HOLLIES

...

WITH LOTS OF
magical surprises

TREES | WREATHS | FESTIVE FOODS
CHRISTMAS MEATS | GIFTS | HAMPERS | CARDS
DECORATIONS | LUXURY LODGES
BOUTIQUE SHOPPING

• THE HOLLIES •
Christmas

The Hollies Farm Shop, Forest Road, Little Budworth, Tarporley, CW6 9ES
01829 760 414 | info@theholliesfarmshop.co.uk | theholliesfarmshop.co.uk

Along with a change in seasons comes a change in focus for habitat management, our grasslands take centre stage with all efforts being focused into their annual management. We rely on a team of our incredibly dedicated volunteers to help us with the cutting and raking of existing meadows as autumn comes round the corner.



At Crown Farm Quarry in Oakmere, we manage a proportion of the site that was previously quarried for sand, for wildlife. There is a broad range of habitats developing across this area including the creation of wildflower meadows.

Although this nature reserve is not open to the public, it can be viewed from the Oakmere Way. It is a really fantastic site for wildlife and worth seeing during the summer months when in full bloom. As the summer comes to an end and the wildflowers have set seed it is important to cut and rake the existing meadows here to keep them at their best. By cutting, raking and removing the vegetation at the end of summer we prevent a build-up of nutrients that would promote the growth of dominant grass species. If left, these grasses would out compete

and shade out the wild flowers and we would lose the biodiversity we have now.

This is where our amazing volunteers come in, working incredibly hard, raking and moving large areas of grassland during the last really hot days of the year to keep these wild flower meadows flourishing. We are incredibly grateful to have volunteers back out with us post lockdown, we could never achieve what we do without the help of our volunteers.



On top of maintaining the existing meadows here in Cheshire, this autumn we have created a new wildflower meadow with a rich wild flower mix including yellow rattle, birds foot trefoil, black knapweed and ox-eye daisy. This field can also be seen from the Oakmere Way which links between the Whitegate Way and Delamere forest, although not much can be seen now - it is worth looking out for next summer!

These meadows should provide a flourishing future for the insect life within the area, benefiting pollinators and species all the way up the food chain. We need more sites like this to give our native wildlife the space and resilience it needs in an ever changing landscape.

THE HATCHMERE BEAVERS

Beavers are back in Cheshire after 400 years! On November 3rd, a pair of Eurasian beavers were released into Hatchmere Nature Reserve, which is designated as a Site of Special Scientific Interest.



They quickly began making the reserve their new home, and doing the job they are there for. By doing what they do naturally along Hatchmere Brook, they will create new habitats and remove nutrient flow into the mere and mosslands, which has caused a build-up of blue-green algae. They will also help to remove the invasive species along the brook.

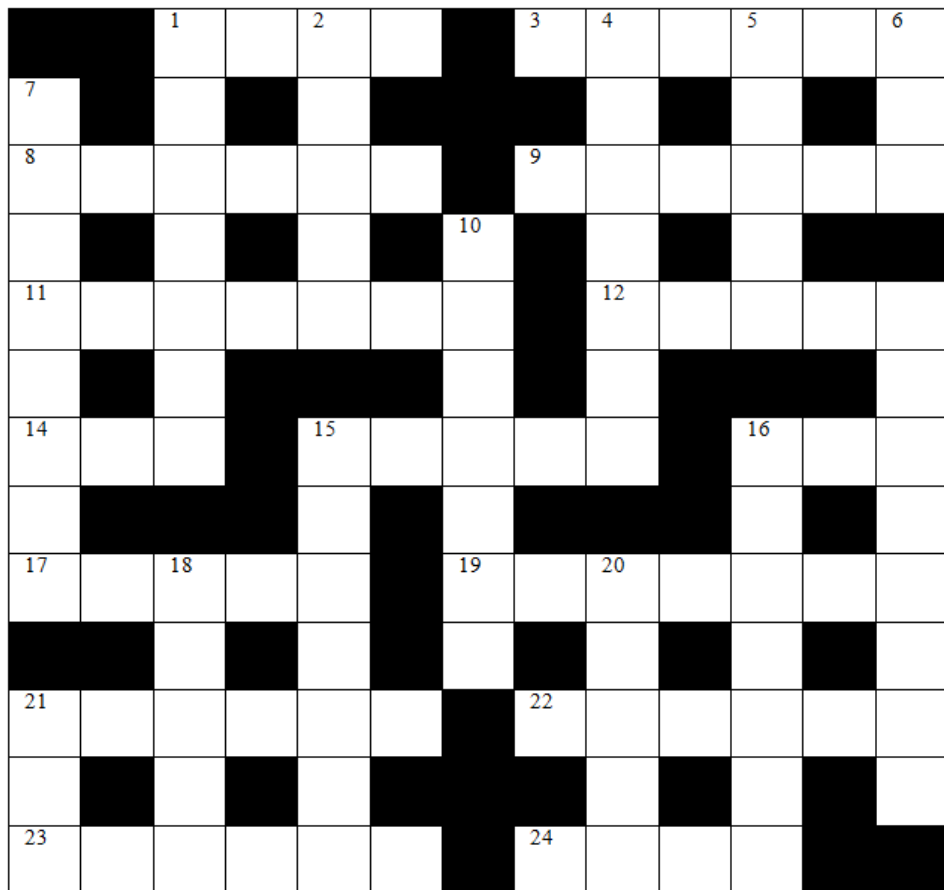
On top of funding from the Biffa Landfill Communities Fund, Cheshire Wildlife Trust needed to raise £30,000 from the general public in order to launch the project. They hit the target in just 18 days, with many local residents among the contributors.

But the work doesn't stop there. This is just the start of a five-year project which hopes to see Hatchmere's precious wetlands restored. The Trust needs to look after the beavers and carefully monitor the effects that they have on the mere and the surrounding habitats. This will cost £17,000 a year for the next 5 years, so if you would like to contribute go to:

www.cheshirewildlifetrust.org.uk/bringingbeaversback

A walk around the mere takes you to the beaver enclosure, but that's all you will see - the enclosure, with dense woodland behind it. We may have to wait until the animals have established themselves more fully before we get a chance of seeing them at work. Here's hoping!



**Across:**

1. Chief sea (4)
3. Publicity around plinth laid low (6)
8. One angry over (6)
9. French car loses power: that's a lemon! (6)
11. Alongside river the Queen's money men (7)
12. Girl with degree in jewellery (5)
14. Mountain or tax efficient investment? (3)
15. Woo at tennis venue (5)
16. Boring instrument seen in brawler's hand (3)
17. American soldier set back in French holiday cottages (5)
19. Uplifting example includes ancient language (7)
21. Foolish Sid takes in ram (6)
22. Headless consumer of lavish meal at festival (6)
23. Reorganise holiday town (6)
24. Roll back, lascivious look (4)

Down:

1. The R and A follow the M1 to get to Shakespeare heroine (7)
2. Susie's offspring (5)
4. A part in 'A Bridge Too Far' for this girl (7)
5. Go away middle distance runner (5)
6. Retreat for a contrary donkey (3)
7. Playing game initially, before going for a stroll (8)
10. Cleverer, like teacher I would say (7)
13. All English bloody symbolic story (8)
15. She totted up French case yesterday (7)
16. A Roman road to rocky hill – clue for airman (7)
18. Escorted journeys to French city (5)
20. Alert for a funeral celebration (5)
21. Short girl comes back for sale or return (3)

QUIZ

by Steve Lacey

(Answers on page 4)

Well, it's been a funny old year so I thought a quiz based around what should have happened but (almost) didn't might help – sort of potential nostalgia and memories!

1. The Queen's Birthday Honours were published on 10th October, some 3 months late. The headline makers were a cook and a footballer – name them.
2. The Olympic Games were postponed. The last time they were cancelled was in 1944; where were they due to be held that year?
3. The traditional Maundy Thursday service, when the sovereign traditionally hands out symbolic alms to elderly residents, was cancelled. Where was it due to be held?
4. The Edinburgh Festival was cancelled; in which month does it take place?
5. On which course should the Open Golf Championship have been held?
6. Glastonbury was cancelled; which 1960s/70s singer was due to headline the Sunday teatime Legends spot?
7. The London Marathon for elite runners finally took place in October over a course in which London park?
8. The general election in New Zealand was postponed, but only for a couple of months. Who is the Prime Minister?
9. In which country was Eurovision 2020 due to take place?
10. Which horse was denied the chance to complete an historic third consecutive win in the Grand National?



DELAMERE
& OAKMERE

NEWS

ISSUE 50 | WINTER 2020



Cover Photo by Bridget Austin:
Blakemere Moss on 'clap for the NHS' evening