

ISSUE 51 | SPRING 2021



DELAMERE
& OAKMERE

NEWS



IN THIS ISSUE

CLEARING UP THE LITTER
LET'S EMERGE FROM THE GLOOM
ICE AND SNOW(DON)

☆ Online Fitness Classes for all levels

☆ Beginner's Exercise Classes

☆ Exercise from home

☆ LIVE or at a time to suit you

☆ Online Health, Wellbeing & Weight Loss Programme

Emma x



EWFit
●●●●● CLUB

☆ Community ☆ Inspiration ☆ Motivation

☆ Health ☆ Wellbeing ☆ Fun

EMMA WILSON
●●●●● FITNESS

Tel: 07971 596529

Email: getfit@emmawilsonfitness.co.uk

www.emmawilsonfitness.co.uk

IN THIS ISSUE

FOREWORD	5
ANSWERS TO QUIZ & CROSSWORD	5
FORTHCOMING EVENTS	6
LETTER FROM THE RECTOR	8
ST. PETER'S NOTICEBOARD	9
CAR PARK AT ST PETER'S	10
ST. PETER'S 100 CLUB	11
FROM OUR NEW METHODIST MINISTER	13
COMMUNITY ASSOCIATION NEWS	16
LET'S EMERGE FROM THE GLOOM	16
DELAMERE WI	18
A CHESHIRE CHALLENGE	18
PARISH COUNCIL NEWS	20
CLEARING UP THE LITTER	22
LOCKDOWN LEARNING	24
LET'S DANCE	25
CENSUS 2021	26
HOUSEHOLD WASTE COLLECTION	26
A CROWD-DRIVEN BUS	27
SNOW AND ICE	28
WILDLIFE IN THE PARISH	30
TACKLING CLIMATE CHANGE IN THE PARISH	32
CROSSWORD	34
QUIZ	35



'Old Pale with love'

This striking aerial view of Pale Heights was taken by 15 year old George Munday of Oakmere, with a DJI Phantom 3 drone

Spring has arrived, and whatever else we might feel about the winter, it certainly produced some spectacular images. Bridget Austin's on the cover and George Munday's opposite would both be striking in any circumstances, but in these Covid-stricken times they say something extra too, with their landscapes of black and white enlivened by a splash of colour and a symbol of love.

Snow and ice kept our other photographers busy too, with wintry scenes that include a view of snowy Snowdon from Pale Heights.

With winter out of the way and lockdown easing thoughts have turned to what comes next. Gloria Ackerley and Diane Hodgson

have both come up with suggestions. Diane has also been busy clearing up the mess left by drive-through litter-louts, as have many other residents, with Fiona Goodier leading the way. We have a piece on how we can all help.

Other contributions include one from Ellen Piercy on local walks (not quite what she was planning before lockdown), and one from our new Methodist Minister Jo Brown, complementing Rev. Angela's from St Peter's, and promising news about the St Peter's car park. And there's more, for which we give a big thank-you to all our contributors.

Clive George
Editor

ANSWERS TO QUIZ AND CROSSWORD

Across: 7. castanet; 8. neocoon; 9. skin; 10. cacao; 12. Ball; 13. Times; 15. Madonna; 16. nap; 18. pan; 20. machete; 21. arson; 22. liar; 23. alter; 24. oral; 25. tease; 26. Whatever
Down: 1. backstop; 2. stun; 3. snacks; 4. onion dip; 5. top bananas; 6, 20, 24. bowls a maiden over; 11. camerabert; 14. manicurist; 17. prevails; 19. bandages; 21. abroad

Answers to crossword

1. Tenerife
2. Kangaroo Island
3. Sri Lanka
4. Isle of Wight
5. Borneo
6. Saint Lucia
7. Ynys Mon
8. Arran
9. Cabo Verde (the Cape Verde islands)
10. South Island

Answers to quiz

THE WOMEN'S INSTITUTE

Meetings are normally held at 7.30pm, every second Tuesday in the month except for August, at Delamere Community Centre.

delamereandoakmere.co.uk/delamere-womens-institute/,
twitter.com/delamerewi, www.facebook.com/DelamereWI

DELAMERE AND DISTRICT GOLDEN CLUB

Here is our programme if Covid allows. Posters will go up if and when we meet again. Anybody at home, any age, is welcome to come along.

Mar 17th: Delamere Derby

31st: Magician Pete Turner

Apr 21st: Chairobics

May 5th: Annual General Meeting and High Tea

19th: Speaker

June 2nd: Coach Outing to Port Sunlight

16th: Play Your Cards Right

30th: "Surprise! Surprise!"

July 14th: Speaker, followed by a summer tea.

We normally meet every fortnight on Wednesday afternoons, except August, at the Community Centre. No upper or lower age limit! For further information, including a copy of the programme as originally planned, or just for a chat, please contact Gloria Ackerley: *tel: 01829 752723*



Oakmere Cricket Club



Oakmere CC have Senior Mens, Juniors (Boys and Girls) and Ladies teams playing weekend and mid-week matches with Qualified Coaches providing structured training sessions across all teams.

Until current COVID-19 restrictions are lifted, Oakmere is unable to provide any cricket at this time. This will hopefully change in the coming months and as such new players (male and female, all ages), Spectators, Volunteers and Sponsors are always more than welcome!

If you are interested in playing cricket or want to find out more about the Club please contact secretary@oakmerecc.co.uk for more details or visit our website at www.oakmerecc.co.uk

Location: Overdale Lane, Oakmere, Northwich CW8 2EL

ABOUT THE NEWSLETTER

Delamere and Oakmere News is published three times a year with the support of the Parish Council. The next issue is due at the end of July.

ADVERTISE WITH D&O NEWS!

Articles, ideas for articles, news of recent events or forthcoming ones, advertisements, photographs and any other contributions relevant to Delamere and/or Oakmere are all very welcome (inclusion subject to editorial discretion).

The newsletter is available to view on the Delamere and Oakmere Community website and you can also get a PDF file by email (contact us if you would like a copy).

CONTACT

Editorial: do_newseditor@yahoo.co.uk

Advertising: do_newseditor@yahoo.co.uk

SUPPORT US

All proceeds from advertisements go into the printing of the newsletter, so we really couldn't do this without you. Thank you!

BASED ON AN ORIGINAL DESIGN BY

**NEAVE
CREATIVE**

Print & Digital Design



☎ 01606 566 202

✉ info@neavecreative.co.uk

🌐 www.neavecreative.co.uk

Isaiah 52:7-10

How beautiful on the mountains are the feet of the messenger bringing good news.

I don't know if Boris has beautiful feet, but I am writing this in the week that the "roadmap" for easing Covid restrictions in England has been announced. In my head I don't hear the "if's and but's", all I hear is that the full economy may be open from June 21, midsummer. Excited wedding couples have started to contact me, hopeful that they will soon be able to have that special day they have so longed for and have had to postpone during the last year.

All around us we see evidence of new life - the daffodils and spring bulbs are not restricted by coronavirus. Each day the sun gets up a little earlier, retires a little later, Spring is synonymous with new life - even the birds sing a little louder as they prepare to mate.

During Lent, Christians take time to reflect. The word 'lent' is derived from the old English 'lencten' or 'lengthen', which literally means 'lengthening of hours of daylight' or in other words 'spring'. So we take up the practice of spiritual spring cleaning looking inwards for signs for new life in Christ. The Christian life is correlated with the life cycle of nature, like spring and summer. We look to the new life found in baptism and the resurrection of Jesus.

If you have been following the church of England's Lenten reflections, #Live Lent, you will recall that on Ash Wednesday we were reminded that most of us don't see our feet as our loveliest feature. In the Maundy Thursday service it's not uncommon for the Rector to wash the feet of members of the church family, a reminder of Jesus washing the disciples' feet at the last supper. You will also find the Isaiah bible reference found in Romans chapter 10, where Paul, also indicates the beauty of feet bringing about good news.

We have all waited patiently for the good news that one day Covid restrictions may soon be lifted, but good news comes in many guises; perhaps it's the news of an expected new baby, or the 'all clear' test result, or even getting that job you longed for.

Jesus's action at the last supper holds an even deeper meaning. Jesus, the son of God, chooses to wash the disciples' feet, the master takes on the role of servant, teaching us all that the greatest gift we can give to one another is ourselves.

Let's all pray that by the end of this Covid journey we've been on, we end up with "beautiful feet", and a desire to serve one another and our community.

Blessings

Rev Angela Askwith

St. Peter's Notice Board



REGULAR SERVICES

Sunday Service

- online only, broadcast via Facebook live at 10.30 a.m. for 30 minutes

Book of Common Prayer Holy Communion

- now back in church at 8.00 am

EASTER SERVICES

Check 'A Church Near You' for the latest information.

We hope to be fully open on Easter Sunday

Palm Sunday, Maundy Thursday and Good Friday may be virtual

ALPHA ONLINE

Every Tuesday at 8 p.m. via Zoom

FROM THE REGISTERS

We said Farewell to

January: Julie Roberts-Joyce

February: May Hampton, Jennifer May Spruce

FORTHCOMING CAR PARK AT ST PETER'S!

Pat Tyson-Jones

Anyone who knows St Peter's Church, situated as it is on the busy A556, will be aware that our lack of car parking is a major problem. The very limited parking available can only accommodate approximately 14 cars. As virtually everyone has to drive to the Church people are forced to park in the lay-by, or even on the grass verge, on the opposite side of the road.



Crossing the road, with fast traffic and limited vision due to the bend, is a hazardous undertaking which puts people's lives at risk. Those at risk include our congregation, many of whom are elderly or young children, parents of children who attend Delamere C of E Academy, anyone attending Baptisms, Weddings or Funerals and occasions such as Remembrance Sunday, Harvest Festival, Christmas Services, Easter Services and Plough Sunday etc. The Parochial Church Council (PCC) have been aware of this issue for a long time. Accordingly, in 2019, they approached the Diocese to ascertain if it was possible to obtain a strip of land in the adjacent Glebe field, owned by the Diocese, in order to increase the car parking capacity.



The Diocese, aware of the Health and Safety issues involved in crossing the A556, were agreeable. We then, after a long fight, managed to obtain Planning Consent from Cheshire West and Chester Council. Their initial refusal was due to the land being designated as Green Belt. However, after commissioning a Highway Engineer's Report, we were granted Planning Consent on the grounds of Health and Safety. Negotiations then took place between the PCC and the Diocese to obtain the strip of land, 1/3 of an acre, required. Unfortunately, things were then put on the back burner as our very elderly central heating boiler needed urgent replacement! Fund raising for the boiler replacement became our chief priority. I am very happy to say that we now have a new boiler and the Church is a warm and welcoming building once again!

Negotiations with the Diocese have been resumed and I am very happy to report that we are now in a position to proceed. Our previous estimate was in the region of £30,000 but we now expect it to be in excess of this due to the time it has taken to progress the project. Whilst the surface of the car

park, comprised of interlocking plastic mesh that allows grass to grow through in order to improve the visual appearance, will be installed by a specialist company, much of the preparation work is to be undertaken by volunteers.

We are, therefore, appealing for your help! We need donations to help with the cost, and volunteers to assist with the physical work of removing the existing fence, levelling the ground and widening the entrance. Any offer of help will be very gratefully received!

Please contact: Pat Tyson-Jones,
Church Warden (01829 751757,
patandgwyn@talktalk.net)
or Glyn Roberts, Church Warden
(01606 889188, glyn@groberts.co.uk)



*Motorcycles, Scooters, Trykes, Quads
Cars, Vans and Three Wheel Cars*

*MOTs, Tyres, Servicing, Repairs, Air
Conditioning, Diagnostics*

Collection from local area

Opening Hours:

8.30 am – 5.30 pm Monday to Friday

8.00 am – 1.00 pm Saturday (MOTs only)

Tel: 01606 882219

Fax: 01606 881700

Email: spanns.garage@zen.co.uk

www.spannsgarage.co.uk

Dalefords Lane

Whitegate

CW8 2BW

ST. PETER'S 100 CLUB LOTTERY FUND - JOIN THE WINNERS!

Ian Howarth

Since the last issue of the newsletter we have had three more draws. In 1st/2nd/3rd order the winners have been:

November - Rev. Angela / Sue
Goodwin / Celia Fisher

December - Jim Parker / Lorraine
Roberts / Pat Tyson-Jones

January - Jim Parker / Julie Howarth /
Tony Overland

For a monthly investment of £5, prizes are £100, £50 and £25 each month (*pro-rata as membership builds up*),

If you would like to take part and support the maintenance and general running of St Peter's, please contact Ian Howarth at

ianh33@btinternet.com

or 01606 883451

or any member of the PCC for further details, a set of rules and an application form.



Eco-Friendly & Sustainable Lifestyle Shop

Products that are kinder to our planet

Focus brand - Clean Living

CLEANING PRODUCTS WITH A CONSCIENCE ©

Clean your home in a way that is healthier for you and the planet with our eco-friendly and refillable products.



LESS PLASTIC



LESS CHEMICALS



LESS WASTE

Clean

Lifestyle

Home

www.lettyboo.com



Dear Friends,

Oakmere Methodist Chapel is not yet at a point where we are ready to open for in person worship, however, we have not stopped worshipping.

Circuit services take place on the North Cheshire Circuit YouTube page:

<https://www.youtube.com/channel/UCVWjwZlruIE2Xe8IUUrtfag>

or through our Facebook page:

<https://www.facebook.com/NCMethodists>

As the minister of Oakmere Chapel, and many other rural chapels in the area, weekly worship and pastoral letters have been going out regularly.

For those who don't have internet access you can hear a weekly reflection by phoning: 01829 708930 or email me jo.brown@methodist.org.uk and I will add you to the weekly email list in which you receive a link to the weekly worship video and a copy of the pastoral letter.

I am busy developing Forest Church. For those unfamiliar with this, Forest Church is exploring our spiritual connection with the environment in which we live, so it's

not defined to meeting in a Forest, that is just the term that we use.

Last years Forest Church Harvest Celebration, and the seedling sessions – short monthly video based on a theme or the current season can be found on the Circuit YouTube page:

<https://www.youtube.com/watch?v=aF8SF34QFBQ>

Forest Church Communities are an organic development, there is no set layout. It becomes what we make it. If you would like to be involved, want to know more or have a conversation with me about how it can benefit our local communities, particularly peoples wellbeing please do contact me. During this time when there are so many challenges and struggles, we know that connecting with creation has so many health benefits and it can be fun too.

- Do you enjoy being out in God's Creation?
- Do you enjoy learning about God through and with creation?
- Do you wonder and want to explore the world around us through your worship with God? – In all types of weather!

Then **Forest Church** might be for you!

What is Forest Church?

"A simple definition might be a group of people, outside, connecting with nature and worshipping God—but I don't think that quite captures the magic, so a bit more detail is needed. Forest Church isn't just normal church happening outside; instead it attempts to participate with creation. We aim to learn, worship, meditate, pray, and practice with the trees, beside the creek, along the shore. Participants come with an attitude of experimentation, playfulness, and



Muddy Church Heart Bomb Packs



Muddy Church is a part of Forest Church that is especially designed for young people and families to enjoy. A printable resources pack has been created on the theme of love for this month. If you would like a link to the documents, please email jo.brown@methodist.org.uk. Within this pack there is also a suggested trail pack that can be put together.

readiness to connect with nature. God is present in creation and can be understood through creation; you're in the sermon, the readings come from the Second Book of God. The worship will happen when your heart is caught up in the beauty of the moment. Forest Church is a fresh expression of church, drawing on much older traditions when sacred places and practices were outside—but it is also drawing on contemporary research that highlights the benefits of spending time in wild places... Forest Church isn't bound by location; it's as possible in the city as in the middle of nowhere. And no, you don't need a forest."

"Forest Church: A Field Guide to a Spiritual Connection with Nature" by Bruce Stanley

Spiritually I have always felt close to God particularly when amongst nature. As a child, when I would visit and spend time with family on the farm there was a spot I

always used to love to go to. In one of the far fields, near the beck was a fallen rotting tree trunk. I loved sitting there, watching the cows, rabbits and birds – listening to all the sounds and trying to work out what they were.

I still feel closer to God surrounded by nature – normally when walking the dogs. I find it's my time for quiet space, a time to reflect, pray and grow into a deeper relationship with God.

Combining this with wanting to be as good a steward as I can to the world I live in, [wanting to be good stewards of our world](#) means learning more and spending more time getting to know and understanding the world around me. The impact I have on the world, and that the world has on me. Reminding myself that I am a part of God's creation.

For me this is a continuing journey of understanding my faith, the world in which I live and my interaction and worship of God within it all.

Does this resonate with you? Is this something you might like to come to? Participate in? Share your experience, knowledge and passion of this wonderful planet God has created?

If it does, please do get in touch. It is always more meaningful working with others to see how we shape Forest Church together. There is no one way of doing Forest Church, which is the beauty of the way that we develop it together. So if you want to come along keep an eye out for notices as dates emerge. If you are someone who wants to be hands on and participate in its development, to use your gifts, or just that you have a passion, drop me an email or phone me.

Blessings,

Rev Jo

Jo.brown@methodist.org.uk

01829 741022vvv

The logo for J&S, featuring the letters 'J&S' in a stylized blue font with a yellow swoosh underneath.

MOTORCYCLE CLOTHING & ACCESSORIES

OAKMERE
MEGASTORE
NEAR YOU!

32,000 SQ FT OF MOTORCYCLE CLOTHING & ACCESSORIES

COME AND VISIT US AT J&S OAKMERE

AND TRY OUT THE FOURWAYS CAFE AND GRILL TODAY!

RJH MOTORBIKE TRAINING SCHOOL ARE ON SITE

EVERYTHING YOU NEED IS HERE



SIGN UP TO OUR WEEKLY NEWSLETTER TO WIN GREAT PRIZES!

Sign up to our newsletter to receive automatic entry in to the #JSFREEBIEFRIDAY prize draw every week.
Just go to www.jsaccessories.co.uk and click on "sign up to newsletter" at the bottom of our home page.

Sadly there is very little to report this time around. The Community Centre remains closed for all users except the Outreach Post Office, which continues to open on Wednesday and Friday mornings. The Centre is cleaned before opening and, if you use it, then please observe social distancing and clean your hands with the sanitiser provided. Thank you.

The Committee continue to maintain the Centre so that our clubs and societies can be up and running as soon as Government guidelines permit. We

are, of course, hoping that happens sooner rather than later. If you want to make a provisional booking for a party or other celebration later in the year then please feel free to contact the Booking Secretary, Lorraine Roberts. No deposit is required and there are no penalties should you have to cancel. Lorraine can be contacted on glyn@gdroberts.co.uk.

Take care and stay safe!

Paul Dean, Chairman and Trustee
Steve Lacey, Treasurer
Pat Wheeler, Trustee

LET'S EMERGE FROM THE GLOOM WITH A BOOM!

Having noticed a sense of real community spirit in the parish during lockdown, with people making a real effort even just to say hello, Gloria Ackerley has been talking to Ward Councillor John Leather about cementing this with some sort of post-Covid event. John is fairly sure that he and Harry Tonge, our other Ward Councillor, will be able to find some funding for this, and might even be able to get our MP along.

Gloria is gathering suggestions on what kind of event it should be, or maybe several events. She will be seeking ideas from Revd. Angela Askwith and our new Methodist Minister, Revd. Jo Brown, before putting a proposal to other members of the Community Association Management Committee. She has got plenty of ideas of her own:

- Maybe an extended open house event in case we can't all fit in!
- Maybe sub-events to suit particular people, such as a celebration dog walk to the Stones?
- Maybe a goody bag with a card and cake for those villagers who can't get out and about too well?
- Perhaps invite key clubs, societies, churches etc. to a "Welcome to Delamere and Oakmere" event, which would be a start in integrating new residents into the community.

Gloria would like your thoughts on those ideas, and any others you might have. You can contact her at gloriadiane.ackerley@gmail.com or 01829 752723.

..... AND WITH THE PARISH IN BLOOM!

Diane Hodgson

We are so lucky to live in such an attractive area, and it's great to see the bulbs now emerging for the Spring, and especially those along the road and lane side verges from volunteer efforts over many years.

Lots of people seem to have found renewed enthusiasm for their gardens amidst the lockdowns. So as we hopefully emerge from the "Pandemic Gloom" over the winter months ...wouldn't it be great to add some cheer this summer for everyone passing through the Parish as well as for those living here?

It could be a floral rainbow of colour as a further thank you to all our key workers. It might even lead to a best improved village or Community Pride award if such things still exist.

It would be so good just to encourage everyone to have a go at planting some extra colourful flowers, sunny window boxes, hanging baskets, tubs etc. enhancing the roadside kerb image, and with some appropriate wild flowers to benefit the bees, insects and the birds etc. They could be annuals or perennials, but there is still plenty of time for enthusiasts to grow plants from seed. Maybe encourage the children to plant sunflower seeds? Always keeping in mind safety though, and the maintenance needs of perennials.

We have plenty of local plant suppliers including Abbeywood, Morrey's, Stonyford Cottage Nursery, The Hollies Farm shop and Tarporley Garden Centre. The list is not exhaustive and apol-



ogies if I've missed anyone out. Unfortunately the local Cubs are not able to supply bedding plants this year.

Perhaps local businesses and the new housing developments might be able to show off some roadside feature displays near to their premises, or sponsor community spirited efforts? Our churches, the Community Association and school are all key players in our parish life and hopefully will participate.

There isn't intended to be anything prescriptive about this suggestion. I am simply hoping it might be a catalyst. I hope some of you will enjoy extending your gardening talents into the community or outside your own property, just so that together we can share in some parish pride and provide some extra colourful cheer. It is, after all, going to be a very memorable year!

One more thing. How about some pictures of the end result in the next issue of D&O News? Send yours to:

do_newseditor@yahoo.co.uk

It will come as no surprise to anyone that we have been unable to hold any meetings as yet, though we are all being positive and looking forward to the time when we can meet up again.

In my last report I told you that Cheshire Federation were celebrating their centenary in 2020 and that Delamere WI were meeting the Chairman's Challenge for every WI to plant a tree to mark the occasion. We had big plans to have a ceremony in November to plant our oak tree outside the new Visitors' Centre in the forest but of course the November lockdown happened and the ceremony didn't! The tree has been planted on our behalf and we are very grateful to Rob, Fiona and Graham of Forestry England who have helped us with this project. We are hoping to have an opportunity, post lockdown, on a lovely warm sunny day (remember them?) and have a

ceremony to 'plant the plaque' and perhaps have a socially distanced celebratory picnic.

In the last report I also told you about one of our members, Ellen, and what she was doing, as her plans to ski across Svalbard had had to be shelved. I don't know if you have been following her on her website but she has not been resting on her laurels and you can catch up with her in her article elsewhere in this edition.

I hope that by the time the next magazine comes out, I will be able to report on what has been happening in our WI meetings. If we are fortunate enough to restart, we meet on the second Tuesday of the month at 7.30 p.m. in the Delamere Community Centre and will welcome any visitors and new members.

A CHESHIRE CHALLENGE

Ellen Piercy

Did you know that 25 named long-distance paths start or finish in Cheshire? Several head far out of the county to Buxton, Litchfield and Llangollen and the total distance is 1500km. After a much planned for expedition to Svalbard was cancelled last year (and now cancelled again to 2022 – 3rd time lucky?) I needed a lockdown-proof challenge to keep me motivated, and so the Cheshire Challenge was born. My goal is to walk all of them, so far I have walked 250km of the paths, and over 300km in total when the connecting unnamed paths are added in to make circular walks: this is a long term

project! Two are completed: the Baker Way and the Delamere Loop, but I have walked sections of 12 others.



Baker Way

Many of the paths are well waymarked, though not all are marked on the Ordnance Survey maps. I used the Long Distance Walker's Association website to find the paths, drew them on a large map of the whole county and then began plotting individual walks. I plot a few, walk a few and keep plugging away!



*The River Weaver
on the North Cheshire Way*



*Hurleston Junction of the Shropshire Union
and Llangollen canals*

I miss walking in the mountains a lot, especially with all the snow in Scotland this year, but I think I had become a bit of a hill snob. I would not have considered walking locally in Cheshire in pre-covid times but I have discovered lots of lovely places much closer to home.

I have loved walking from my front door, during the latest lock down I have walked the Delamere Loop over three walks, setting off from home firstly into the forest then anti-clockwise round the loop, through Primrose Wood, Utkinton, Eaton, Little Budworth Common, the Whitegate Way and back into the forest.



Crossing paths in the forest

I'll continue to walk from home, solo until the restrictions lift, then venture further into the Cheshire countryside by car. And then maybe the mountains will call me away for a while...

You can follow me on:

Facebook:

www.facebook.com/EllenRandoGirl

Instagram: @randogirl42

Twitter: @randogirl42

Dear Residents and Friends of
Delamere and Oakmere

As 2021 is well underway, we are unfortunately amidst a third lockdown and yet again we are all having to do our best to keep everyone safe. The weather is also proving to be very challenging, from snow to heavy rain and I'm sure we are all hoping for some better weather soon.

During this lockdown period I am aware that these past few months have been particularly challenging times for you all and as a reminder there are a wide range of services available to use, especially if you require help and support. Details of these services can be found via the Delamere and Oakmere website or please feel free to contact myself or the Parish Council who will be happy to help.

The Parish Council have invested in new grit bins within Frith Avenue and near to the Parish Council noticeboard by J&S Accessories, and we hope that these bins will help during the colder months.

We are also continuing to monitor Road Safety issues and we are working with Cheshire West and the PCSO, particularly as there has been a considerable increase in the number of visitors to the forest, and discussions are ongoing with Forestry England to make the area safer for residents

particularly at weekends. I would also like to extend a huge thank you to the residents who have taken the time to keep Delamere and Oakmere looking clean and tidy over recent weeks.

Over the last few months, we have had so say farewell to Cllrs Chris Ball and Justin Taylor and wish them well for the future. I would also like to extend a very warm welcome to Cllrs Fiona Goodier (Delamere Ward) and Sarah Addiscott (Oakmere Ward) having recently joined the Parish Council. We also have 2 vacancies within the Oakmere ward available and anyone with an interest in local matters or wanting to help make a difference to our community is warmly welcomed to apply.

We are also in need of a willing volunteer to help put Parish Council notices on the Parish Council board by Hogshead Lane. Anyone who can help us please contact the clerk.

I hope that these next few months, as restrictions are slowly eased and the better weather comes, will bring more opportunities for you all to see family and friends again, but until then please stay safe and look after yourselves and your families.

Andrew Bell
Chair, Delamere and Oakmere Parish
Council

STORM CHRISTOFF

Ward Councillors John Leather and Harry Tonge would like to hear from any residents who were flooded during storm Christoff, to hear of any problems they had, and how to better respond in the future. john.leather@cheshirewestandchester.gov.uk, Harry.Tonge@cheshirewestandchester.gov.uk



Hollybank

VETERINARY CENTRE



- ◆ *Independent small animal veterinary hospital*
- ◆ *Caring for pets and their owners*
- ◆ *24hr emergency service on site*
- ◆ *Exceptionally high standards of care, hygiene, facilities and equipment*
- ◆ *Professional, friendly, welcoming & kind*
- ◆ *Part of the local community*



584 Chester Road | Sandiway | Cheshire | CW8 2DX

Tel: 01606 880890 | www.hollybankvets.co.uk

CLEARING UP THE LITTER

If you've noticed an increase in the amount of litter scattered around the parish you are not alone, and it's not just here. The Keep Britain Tidy campaign calls it a nationwide littering epidemic, caused in part by the Covid pandemic overstretching the resources of local authorities. Other factors include a surge in visitors to the countryside and greater use of takeaways when the pubs and restaurants are in lockdown. Whatever the cause, and whatever uncharitable thoughts we might have about the culprits, it's a problem we can do something about.

One thing we can all do is make sure our recycle bin lids are secure, as sometimes things escape. We can also pick up litter outside our own properties, but don't touch it with bare hands, and be careful not to stray into the road

There's more we can do as well. If you have joined the parish Facebook group you will probably have seen that Fiona Goodier has set up a rota of volunteers and allocated areas for them to pick.

Fiona says: "Litter isn't only unsightly but poses a real danger to wildlife and grazing animals. However, thanks to several volunteer pickers many filled bags have been collected and disposed of correctly. It can be a thankless task; no sooner is one area free of litter than a few days later it can be back to square one. Indeed I did one stretch and turned around to find a newly thrown can. All is not lost though, and I send my grateful thanks to all volunteers that pick on a regular

basis, both along our roads and verges and within the forest itself. Without them the litter would be far worse and I am truly grateful for them doing this in their spare time."



A volunteer at work – Marianne Galt of Stoney Lane. Photo by Gloria Ackerley.

To get on the rota contact Fiona via Facebook or at fiona.goodier@gmail.com.

The rota is totally informal, and people just do whatever they can when they can. Nobody is protective over their patch, so if you see an area that needs doing just do it, so long as you've got the right equipment and take the right safety precautions. Whether or not you join the rota, remember that your safety is entirely your own responsibility, and neither Fiona nor anyone else bears any liability whatsoever. Remember also that all

existing lockdown requirements have to be met. So be careful! Advice on safety can be found at:

<https://www.keepbritaintidy.org/get-involved/support-our-campaigns/great-british-spring-clean/clean-preparation-and-safety-advice>

and

<https://planetpatrol.co/blog/2020/06/05/litter-picking-health-and-safety/>

Litter-grabbers only cost a few pounds, and along with other equipment are also available on loan from Cheshire West and Chester Council. See:

<https://www.cheshirewestandchester.gov.uk/residents/your-streets/campaigns-and-news/love-your-streets-campaign.aspx>

If you haven't got enough room in your black bin you can arrange for CWaC to collect the bags. Leave them next to a CWaC litterbin and send an email to YourStreets@cheshirewestandchester.gov.uk.

By sending the email they will know the bag isn't a flytip, and can arrange for a StreetCare cleansing team to remove it.

In an ideal world there'd be no need for litter-picking, and in a slightly less ideal one we'd be able to leave it all to CWaC. With tight constraints on its resources CWaC encourages volunteer assistance through its YourStreets initiative, but there are some parts of the parish that really are best left to them. Diane and Eric Hodgson had a go at parts of the A54 and the A556, and gave up after filling seven bags. While walking the A54 from the Fishpool up to Stoney Lane Kay and I thought of doing it, but soon decided it wasn't even worth trying –

there was so much litter it would have needed a sizeable lorry. What is more, the guidance advises against volunteer litter-picking on roads where the speed limit is more than 40mph. So instead we put in a report on CWaC's website: <https://www.cheshirewestandchester.gov.uk/residents/contact-us/report-it/report-it.aspx>

Seeing the litter still there we followed it up and got an explanation from Jerry Gibbs at CwaC. Most litter picking is organised by CWaC's Street Care team, but for major roads it's done by Highways, as they have to manage the traffic with stop/go signs, temporary traffic signals and sometimes road closures. As a result of Storm Christoph they've been inundated with flooding incidents, and other work has had to take a back seat. Nonetheless Jerry encourages us to continue putting in litter picking requests, which they will deal with as soon as they can.

Meanwhile, our CWaC Ward Councillor John Leather has been taking a keen interest. For those parts of the parish that cannot reasonably be cleared by volunteers, file a report on the CWaC website, and if that doesn't work, contact John at:

john.leather@cheshirewestandchester.gov.uk

or 01829 752558

Litter has also been an increasing problem in the forest, particularly around the visitor centre. Don't contact John about that, as the responsibility rests with Forestry England rather than CWaC.

Headteacher Julie Clayton has praised parents, pupils and teachers for making Delamere CofE Academy's online learning programme such a success. The team at

the school have worked hard to make virtual lessons during lockdown closely resemble a day at school.



Children have been taught by their teachers and support staff over Zoom lessons in all the key subjects, plus they have enjoyed online workshops in art, dance, PE and drama as well as book readings, fun challenges, science experiments and appearances by special guests.

Headteacher Julie Clayton said: "Capturing children's imaginations and getting them to focus is so much harder over Zoom, so we've had to work extremely hard to find a way to engage them and keep them motivated.

"The day is split into manageable sections to help children to stay on track, stay motivated and stay positive.

"I have no doubt there will be gaps in learning when they return - online learning is no substitute for the classroom - but we are encouraged by the work that parents are submitting.

"All of our children are taking part and anyone who has fallen behind will receive additional help when they return to school.

"This has been a huge challenge for parents, teachers and children, and there will be a lot more to do when they are back to school, but we are grateful that everyone is pulling together to make it work. We are committed to making sure this generation does not suffer in the years to come."

During a week of activities to recognise Children's Mental Health Week,

children also took part in games designed to help 'express yourself' – which was the theme of the week. Singing, baking, dancing, meditation and movement were all designed to encourage children to feel good and confident.

Mrs Clayton added: "The emotional wellbeing of our children is just as important as their physical health.

"We want every child to be the best possible version of themselves and health and happiness are essential to this.

"We saw the delight in their faces when they returned to school after the first lockdown and we can't wait to welcome them back once again."

Delamere Academy is part of North West Academies Trust (NWAT) which manages schools across Cheshire and Shropshire including two other Ofsted 'outstanding' schools, St Martin's Academy and Acresfield Academy, both in Chester.

CEO Steve Docking added: "I'm delighted with the way our staff have adapted learning so they can deliver it online, but everyone has to buy into the process to make it work.

"I'm very grateful to our children and their parents, as well as our staff, for coming together to make this solution the success that it has been."

LET'S DANCE *By a Delamere resident*

At the beginning of the 1980s a group of Delamere young ladies wanted to start an evening class with a difference. They decided on Keep Fit to Music, Top of the Pops of course, which was a new trend for exercising at the time. Joan and Jean were to provide the music, and the Keep Fit class gave them advice and routines. The classes were a great success, not taken too seriously, but with great camaraderie and a good night out. Then came a request. Would they give a demo at a social evening? Oh gosh! But why not? Just a bit more practice. The evening came. No need for nerves. They were perfection, and the finale of a flower opening brought gasps and applause from the

audience. Sadly Health and Life got in the way and they had to disband, but most of the gang are still in the Delamere area, so I say Lovely Memories and Hi from *Super Troopers*.

ELECTION FOR POLICE AND CRIME COMMISSIONER

The election for the next PCC will take place in May. If you are concerned about attending the polling station in person you can apply for a postal vote. See: www.cheshirewestandchester.gov.uk/your-council/voting-and-elections/how-to-vote/how-to-vote.aspx

If you haven't already had one you should soon be getting a letter telling you that Sunday 21st March is Census Day. Every 10 years the Office for National Statistics (ONS) carries out a census to get complete picture of the nation and the make-up of local neighbourhoods. The next one is now due.

This time it will be different. Instead of getting a big paper questionnaire to fill in, the letter will give you a unique access code to complete the

questionnaire online. If you don't have internet access you can still get a paper questionnaire on request.

Providing the answers is a legal requirement, and it's useful too. Without census data central and local government would be flying blind.

census
2021

CHANGES TO HOUSEHOLD WASTE COLLECTION – HAVE YOUR SAY

Cheshire West and Chester Council is conducting a public consultation on proposed changes to its household waste collection service. If you want to participate don't leave it long, as the consultation closes on **Thursday 18 March**. Go to:

<https://participatenow.cheshirewestandchester.gov.uk/waste-strategy-consultation>

If you think that CWaC boosts its income by selling your garden waste for composting, think again. It actually costs them money, which they would sooner not spend. They are considering three options, which don't include keeping the service as it is:

- Charge for garden waste collections, in the region of £40-£70 per bin per year
- Suspend the service for part of the year, for example from September to April
- Remove the service altogether

CWaC is considering two options for the service as a whole (again, the current service is not an option).

	Current service	Option A	Option B
Household waste	2 weekly, 180 litre wheelie bin	no change	3 weekly, 240 litre wheelie bin
Recycling	weekly, 2 boxes	2 weekly, 2 wheelie bins	3 weekly, 2 wheelie bins
Garden waste	2 weekly, 240 litre wheelie bin	no change	3 weekly, 240 litre wheelie bin
Food	weekly	no change	no change

As well asking you to choose between the options the questionnaire provides boxes into which you can enter your comments. I devoted mine to venting my wrath on the quality of the questionnaire. I've seen worse, but not much worse.

A CROWD-DRIVEN BUS?

Cheshire West and Chester Council has put in a bid for £1 million from the government's Rural Mobility Fund, to undertake a 3-year trial of a new rural bus service. If successful the service would provide access to Helsby and Frodsham with links to Ellesmere Port, Runcorn and Warrington.

The proposed service will feature specific journeys that passengers will pre-book. This "crowd driven" approach aims to provide journeys that meet genuine needs and can therefore be expected to be used. The objective is to concentrate more passengers and revenue on each vehicle trip.

If the funding is approved there will be a need to identify particular routes. CWAC Ward Councillor John Leather would welcome your suggestions. John would like to know how often you would use the service for any particular destinations, any preferred days/times of service, and your preferred pick-up points.

Pick-up points might for example include Waste Lane, Station Road, Delamere Grove / Eddisbury Hill Park and Crabtree Green Park. Destinations might include Cheshire Oaks or Frodsham on market days.

You can contact John at:

Email:

john.leather@cheshirewestandchester.gov.uk

Phone: 01829 752558

Address: 1 Kelsborrow Way,
Kelsall, CW6 0NL

The more suggestions the better!

ForestNet IT Service

Station Rd, Delamere

*Your Local Computer Support Service for
the Home/HomeOffice/Small Business*

PCs Laptops Tablets

Printers Routers Servers

Troubleshooting/Problem Solving/Upgrades

Software Installs/Upgrades

Anti-virus/Malware issues

Home/Office Networking

Router/WiFi issues

Broadband Security Controls

30 Years ICT experience

Courteous Professional Service

Competitive Rates Fixed Price No Fix No Fee

Email: enquiries@forestnet.co.uk

Tel: 07856 222415

Web: www.forestnet.co.uk



A snowy Snowdon from Pale Heights at mid-day, with the sun casting a shadow over the horseshoe. Snowdon isn't one of the landmarks shown around the stones, but it's just two or three degrees to the right of Moel Famau, which is.



Frozen Blakemere, by Ray Downham



Eddisbury Hill Farm, by Bridget Austin



Jeff Hall by frozen waterfall at the Eddisbury Hill drainage channel, by Gloria Ackerley



Aerial view of frozen Blakemere, by George Munday



Half frozen Marley Lake



The Roman Road from above the Eddisbury Hill drainage channel, by Bridget Austin.

The channel was carved out by meltwater running under the ice sheet during the Ice Age.

Frozen Blakemere, by Ray Downham



Notes on feeding birds

I am often asked what is the best type of bird food to put out to attract wild birds to my garden aka Organsdale bird feeding station.

There is quite a lot to think about other than explaining the seed and where to get it from.

As I look out of the bedroom window, on a wet, windy and icy morning, the six plastic trays used as bathing or drinking troughs are all frozen solid and in need of replenishment. The words dedication and commitment spring to mind. It can be much work on a daily basis, which must be done or the birds will not turn up. Cleaning the feeders on a rotation or when they get wet is a chore in itself.

I have from 15-20 feeders in use, depending on the season and I feed throughout the year. This can be expensive so I have had to shop around to get the food needed. I don't use mixed corn which is usually pigeon or hen corn, which attracts rats, crows and other greedy feeders if it contains maize. It may also attract badgers which is not a bad thing although they tend to force entry and dig up the garden if they can't find more maize.

During the winter, I feed the pheasants in the school wood with a seed mix containing wheat. I feed Niger in winter especially if there is an influx of siskin or redpoll otherwise goldfinch use this seed.

My main seed is sunflower chips which is sunflower hearts chipped smaller. There is very little waste in this product. It is more expensive than sunflower hearts and not easy to get hold of at the moment. Plain canary seed is another choice of food, which is nearly on a par

with sunflower hearts, as every bird seems to love it, especially tree sparrows and there is very little waste. Two merchants sell this at a reasonable price.

Suet balls are good if you buy the correct ones. Cheap ones are full of pigeon corn and will leave a lot of waste. You may have to put them behind some kind of wire netting that will let sparrow sized birds through but keeps out the likes of magpies and starlings but try to make allowances for woodpeckers.

You should try to buy feeders that are of good quality and waterproof. This is not always easy as water can get in by running down the hanging wires and entering through to the body of the feeder. Plastic gravel trays act as water points or bird baths (9in x 15in small or 2ft x 2ft large). These are easy to clean and are quite cheap from garden centres. The larger ones with a flat roofing tile placed in the bottom are very popular with all the visitors. They don't need to be more than 3in deep as birds like to stand in water.

If you have to store feed, have somewhere dry and safe from rats, mice and voles.

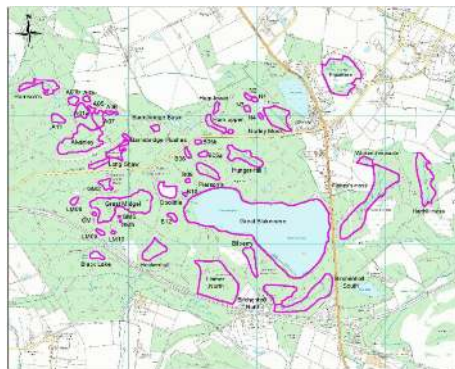
I mostly bulk buy food up to 25kg from two merchants: sunflower chips, plain canary seed and suet balls from Brinvale Bird Foods, Brinvale Farm, Broughton Lane, Long Clawson, Melton Mowbray, Leics LE14 4NB, (Tel: 01664 823230) who offer next day delivery with free delivery on orders over £30.00.

Another reliable merchant is H.J. Oakes, Wheelock Mill, Wheelock, Sandbach (Tel: 01279 753295). They sell everything except sunflower chips.



Afternoon sunshine in the forest, by Ellie Peters

The Cheshire Wildlife Trust's award-winning Delamere Lost Mosses project is a prime example of how lowland peat sites can be restored, helping to reverse one of the biggest contributions to climate change.



*Lost mosses project sites
(from the project's final report)*

The gradual rewetting of the forest's meres and mosses since 2013 has allowed for the growth of sphagnum moss, the first stage towards building up carbon-rich peat soil. Twelve different species of sphagnum moss have since been recorded on site, two of which are rare to Cheshire, showing that the natural carbon cycle of the area is returning.



*Sphagnum moss © Mark Hamblin
2020VISION*

The project's 83 page final report describes it all in detail, with dozens of pictures taken before and after restoration. It can be downloaded from <https://www.cheshirewildlifetrust.org.uk/sites/default/files/2018-06/Delamere%20Lost%20Mosses%20final%20report%202013-18.pdf>

The CWT's chief executive, Charlotte Harris, says that the Trust's efforts to restore Cheshire's few remaining peatlands is only the start of what is needed. 'Over the years, many sites have suffered from intensive extraction and development, destroying both wildlife habitat and a valuable source of carbon storage. Change on a much bigger scale is needed if we want to bring back Cheshire's peatlands.'

The same applies throughout the country. Peatlands are the UK's largest land store of carbon, holding three times as much as woodlands. They store around 3.2 billion tonnes of carbon, but in their current degraded condition they release the equivalent of 23 million tonnes of CO₂ every year. That's 5% of the UK's annual greenhouse gas emissions. When in their natural wet state, they hold carbon in soils that have built up over thousands of years. When they dry out the carbon combines with oxygen to form CO₂ and scientists have estimated that if all the carbon held in the world's peat soils were released, it would raise CO₂ levels by 75%, with catastrophic consequences for global climate.

They are also a precious wildlife habitat, including cotton grass and sundew.



Peatland plants ©Dom Hinchley2020VISION



Cotton Grass Peter ©Cairns2020VISION



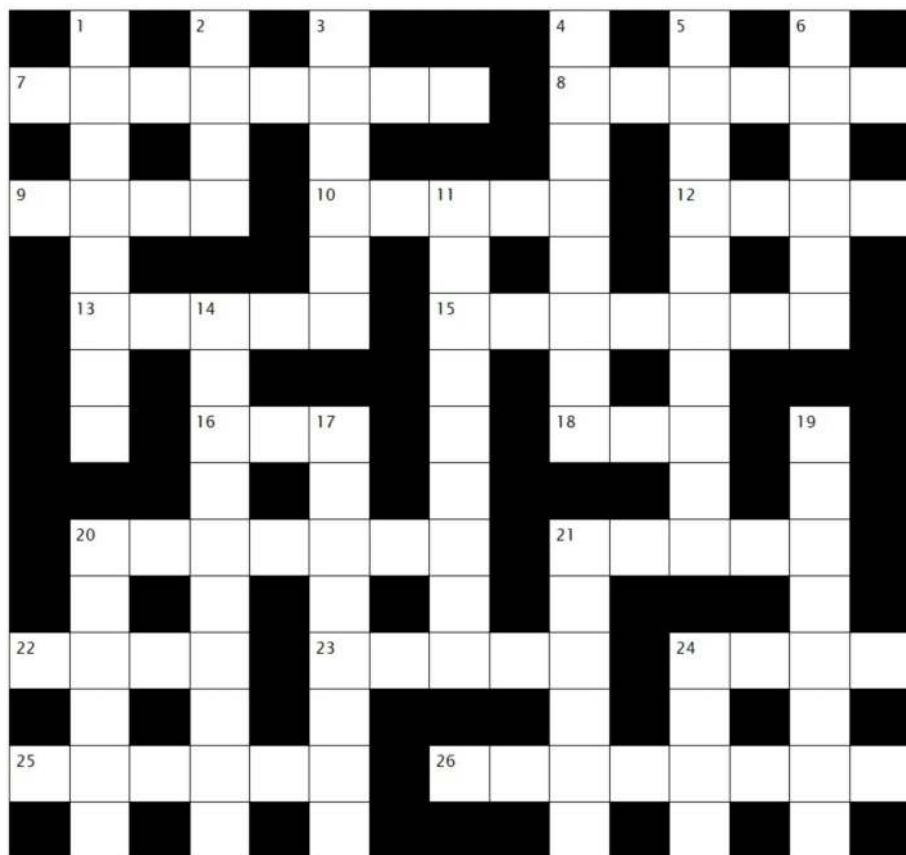
Sundew (c) Ross Hoddinott2020VISION

Peat soils and vegetation also hold water well, and provide natural flood protection by catching downpours. Nearly three quarters of the UK's water supplies come from peatland catchments; when those places are well-managed, water companies spend less treating that water to make it drinkable.

Sadly, a high proportion of UK peatlands have been burnt, drained and damaged over decades of misuse. Craig Bennett, chief executive of the country's Wildlife Trusts, is adamant that the government needs to step in. 'The Government has failed to set an ambitious restoration target for peatlands even though they are one of the most valuable habitats in the UK. Just as bad is the fact that they do not have the appetite to stop the ongoing damage. The nature and climate crises must be tackled together – prizing our peatlands should be top of the Government's to-do list. Meanwhile, it's left to voluntary charities to step in. The Wildlife Trusts have restored more peatland than the Government has committed to do.'

The UK will be hosting this year's global climate conference, COP26. According to the Wildlife Trusts, the Government risks a huge embarrassment unless it produces a clear plan to do more than it has so far to restore the country's peatlands.

Cheshire Wildlife Trust has been acting as a voice for wildlife in the region for more than 50 years. In addition to its conservation work, it host dozens of events each year, inspires thousands of children at Bickley Hall Farm and in schools across Cheshire, and provides volunteering opportunities for over 400 people a year. If you would like to find out more or add your voice, visit www.cheshirewildlifetrust.org.uk/membership



Across:

7. Go fishing for percussion instrument (8)
8. Non eco reorganisation for conservative under Thatcher (6)
9. Ruskin abandoned game to save his (4)
10. Change tree's second for nothing and fourth for fifth to find its tasty product (5)
12. Island backs one lab (4)
13. Emits crumpled newspaper (5)
15. Well qualified Italian woman is a famous singer (7)
16. Cat overturns cooking pot for a sleep (3)
18. Reverse 16 if you want to cook (3)
20. Mate, revolutionary at heart, wields this weapon (7))
21. Minister didn't start the fire in this crime (5)
22. Storyteller sounds like his stringed instrument (4)
23. Change later to change (5)
24. This exam is included for all language qualifications (4)
25. After cuppa, sell short on dried flower arrangement plant (6)
26. Always question first, though anything will do nowadays (8)

Down:

1. Defender, retreat then halt! (8)
2. Take almonds back, they can cause shock (4)
3. Large bags contain new treats (6)
4. For starters I go in on and on and swim (5,3)
5. Big noises in fruit industry (3,7)
- 6,20,24. Cricketer, good with the ball, wins girl's favour (5,1,6,4)
11. Cat involves parliamentary representative to get cheese (9)
14. Dexterous beautician toys with a mini crust (10)
17. Before covering her face, she always gets her way they say (8)
19. Musical group gets older, but help with healing (8)
20. See 6 down
21. A minor highway overseas (6)
24. See 6 down

nicola gibson

ARCHITECTURAL
DESIGN

ONE OFF HOUSES | EXTENSIONS & REMODELLING
RESIDENTIAL DEVELOPMENTS | GARDEN ROOMS



All drawings prepared for and submitted to the Planning and Building Control departments on your behalf, including Listed Building and Conservation Area consent where necessary.



Tel: 01606 536101 Mobile: 07813 034552
Email: nicola@njgdesign.co.uk www.njgdesign.co.uk

QUIZ by Steve Lacey

(Answers on page 5)

Having got through the cold winter months we are all hopeful that we might get away for some sunshine this summer. So here are 10 questions about islands, some of which might be sunny!

1. Which is the largest of the Canary Islands?
2. What is the name of the large island off the coast of Adelaide in Australia?
3. Which island was formerly known as Ceylon?
4. Which island was known to the Romans as Vectis?
5. Which island contains all or part of Indonesia, Malaysia and Brunei?
6. On which Caribbean island will you find the World Heritage site 'The Pitons'?
7. What is the Welsh name for the island that the English call Anglesey?
8. Which island is connected to the mainland by the Brodick to Ardrossan ferry?
9. Of which island country is Praia the capital?
10. Which is larger island in New Zealand – the North Island or the South Island?



DELAWARE
& CAKMERE

NEWS

ISSUE 51 | SPRING 2021

Cover Photo by Bridget Austin:
Skiers on the hillfort track